

OCEAN*LUX*

Hana



Length: 42.60m / 139.76ft

Guests: 10

Cabins: 5

FEATURES

- The large master suite features a balcony.
- The nine-member crew is highly experienced.
- The interior of the yacht is spacious and voluminous.
- The generous sundeck covers over 50% of the yacht's length.
- The fitness area offers direct access to the large swim platform.
- The yacht is a certified RYA training center.
- Sky TV and Apple TV are available throughout the yacht.
- The experienced crew is well-versed in event yacht and charter operations.
- The yacht features stabilizers both at-anchor and underway.
- The exceptional deck space covers half the length of the entire yacht.
- The vast sundeck includes a central bar, dining area, Jacuzzi, and a drop-down TV screen.
- The full-beam master state room has a private balcony.
- The yacht is ideal for families and comes equipped with a large collection of sports equipment.
- The yacht is also a certified Jet Ski training center.
- The stylish Claude Missir interior is noteworthy.
- On the sundeck, guests can enjoy a Jacuzzi, BBQ, and bar.

CABINS DISTRIBUTION

1 MASTER	3 DOUBLE	1 TWIN
-------------	-------------	-----------

PRICE

From: \$12,135,000

SPECIFICATIONS

Length: 42.60m / 139.76ft

Beam: 8.65m / 28.38ft

Draft: 2.30m / 7.55ft

Cruise speed: 12 knots

Max speed: 13 knots

Built: 2008 · 2019 (Refitted)

Builder: CRN

Exterior design: Zuccon

Interior design: Claude Missir Architecture Interieure





DESCRIPTION

Motor yacht Hana, built by CRN in 2008, is a luxurious yacht offering comfortable accommodation for up to 10 guests in 5 cabins. The yacht features beautifully designed indoor and outdoor living areas, providing flexibility and comfort during your charter. The yacht is child-friendly and can carry up to 9 crew members to ensure that guests have a relaxed and comfortable experience on board.

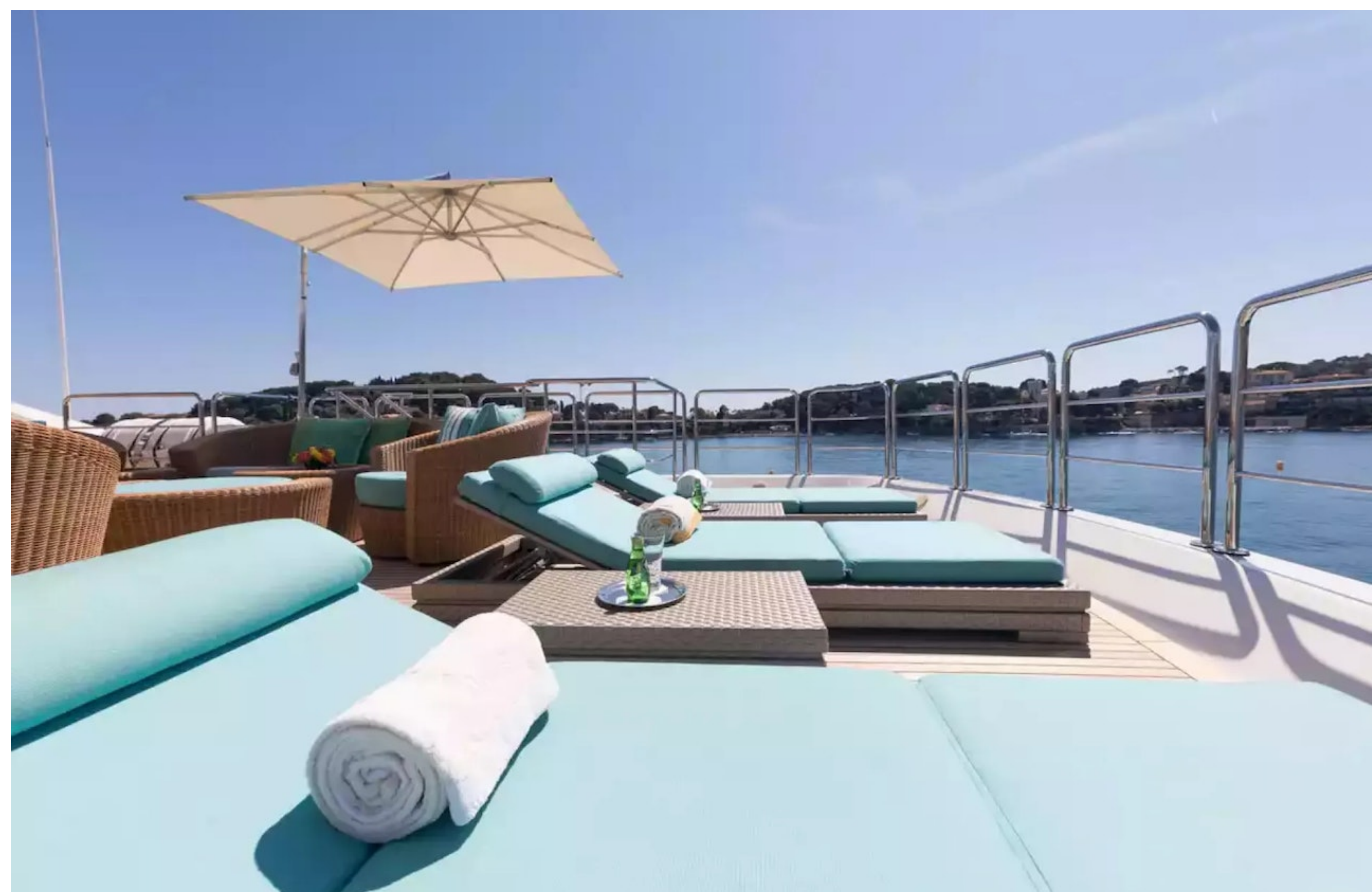
Hana is equipped with a range of amenities to ensure that guests have a fun and entertaining time while on board. The yacht has a gym with all the latest equipment, and a jacuzzi on the deck. Additionally, Hana features Wi-Fi connectivity, air conditioning, and an advanced stabilization system that provides exceptional comfort levels for guests when the yacht is anchored or underway.

The yacht is powered by twin Caterpillar engines and can cruise at a comfortable speed of 12 knots, with a maximum speed of 13 knots. With a range of up to 3,800 nautical miles, Hana is capable of taking guests to remote and beautiful destinations. The yacht is equipped with a variety of water toys, including Jet Skis, WaveRunners, towable toys, waterskis, scuba diving equipment, a seabob, and wakeboards. Hana also features two tenders, including a 5.4m/17'9" Castoldi Tender.

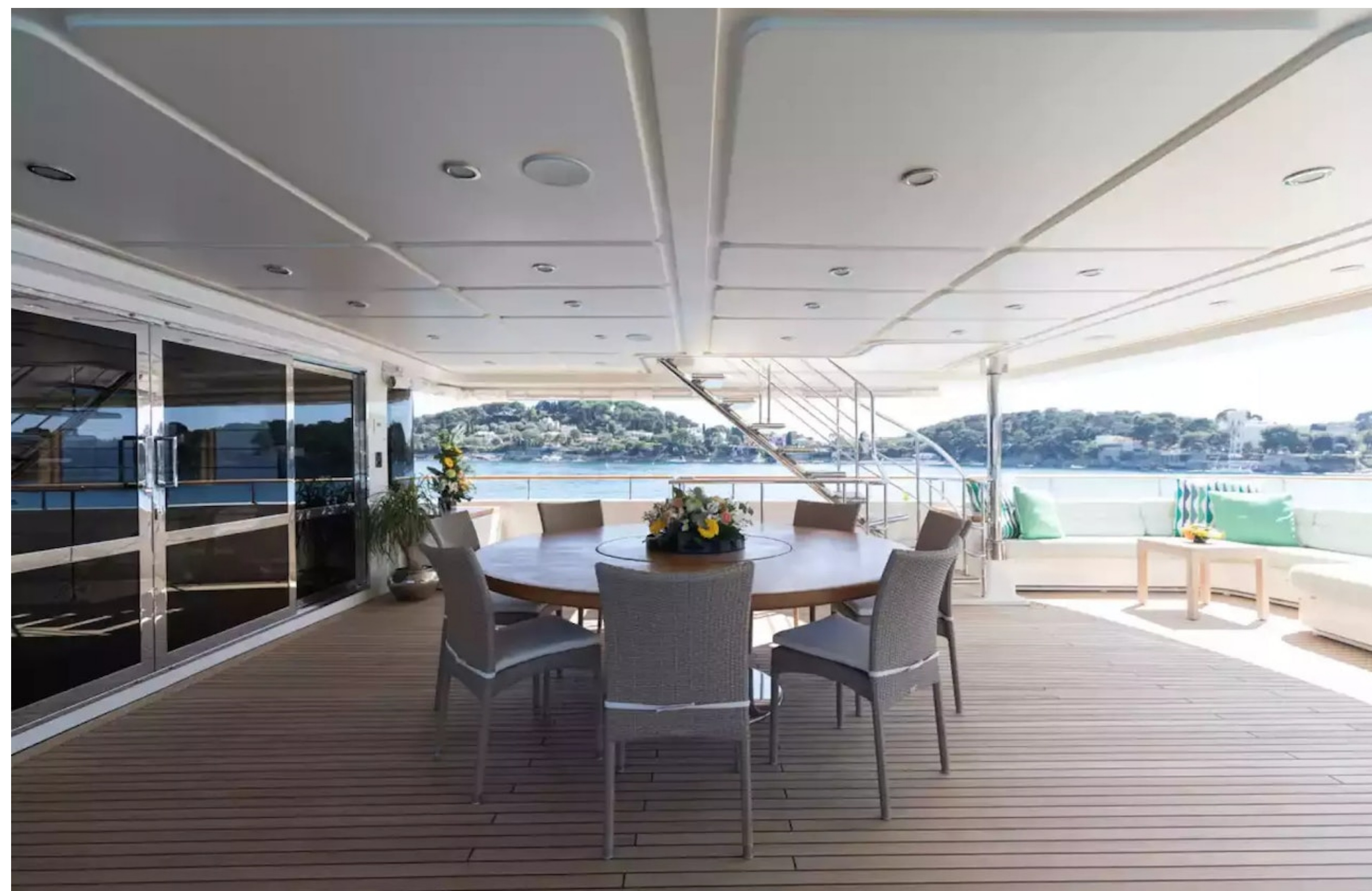
Hana is available for charter upon request this winter and is accepting bookings for cruising in the Mediterranean this summer. With its luxurious styling and exceptional amenities, Hana promises to provide guests with an unforgettable yacht charter vacation.

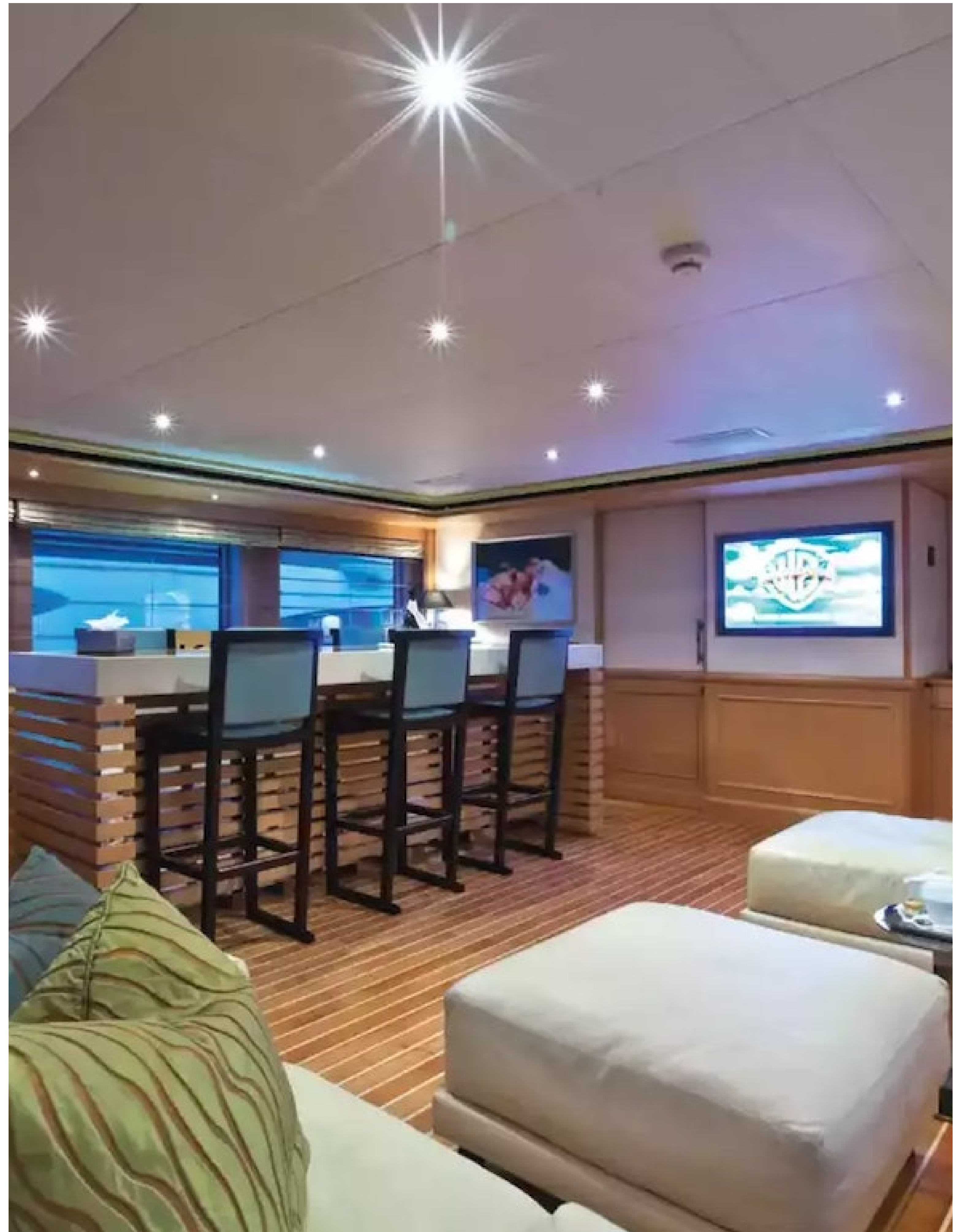
AMENITIES

- Jacuzzi
- At-Anchor Stabilizers
- Stabilizers Underway
- Deck Jacuzzi
- Wifi
- Gym
- Video On-Demand
- Air Conditioning





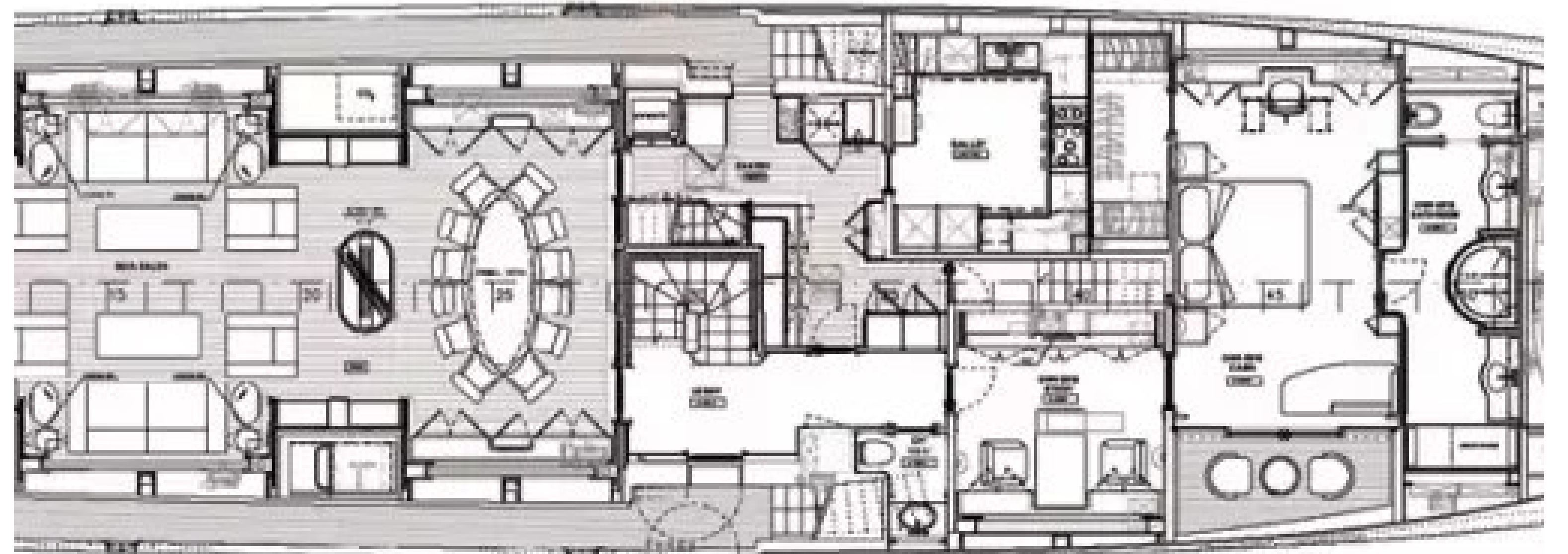
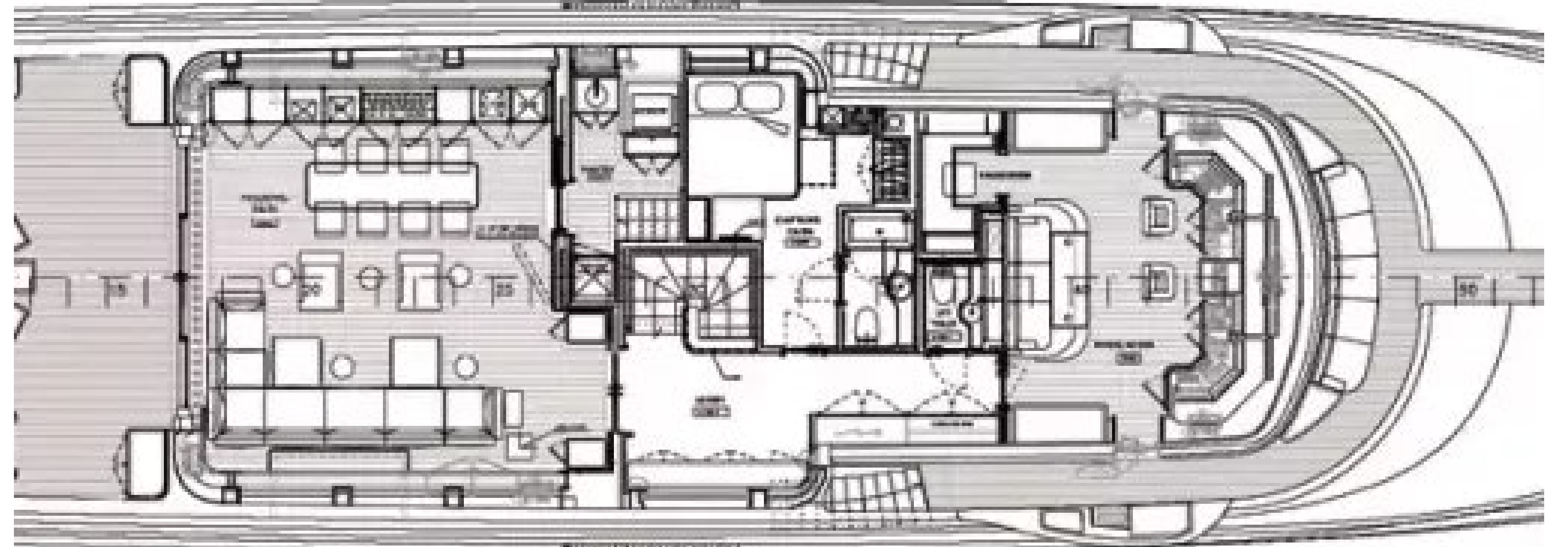
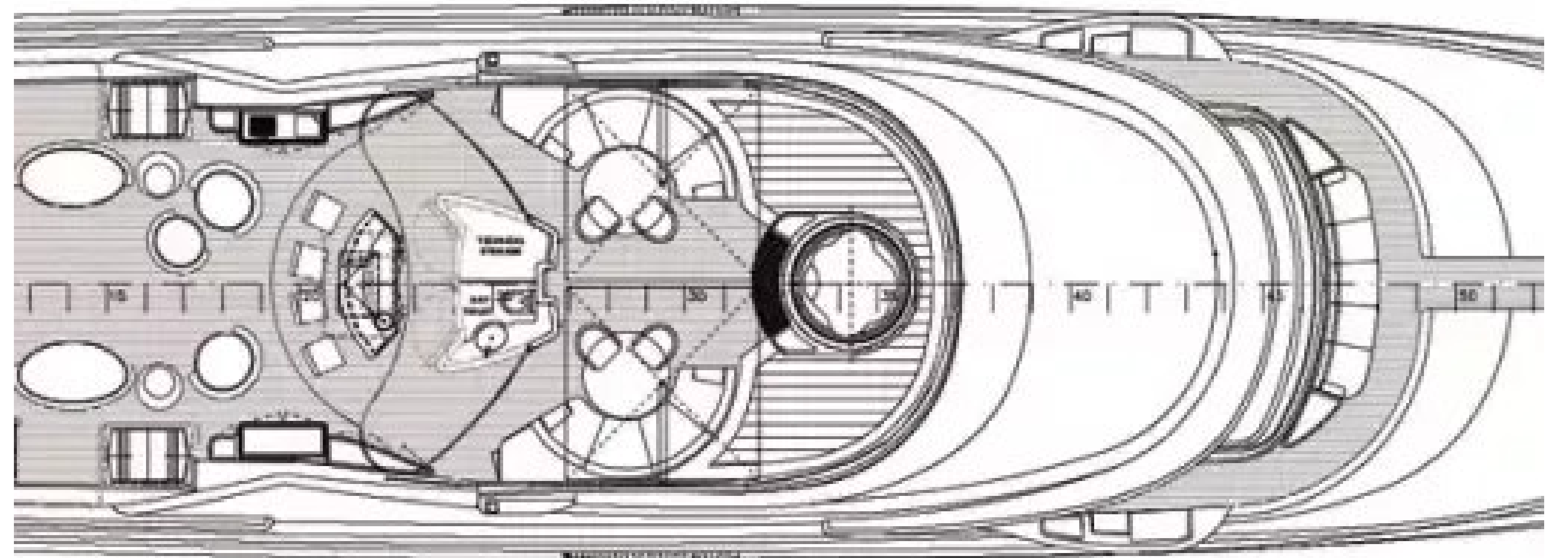


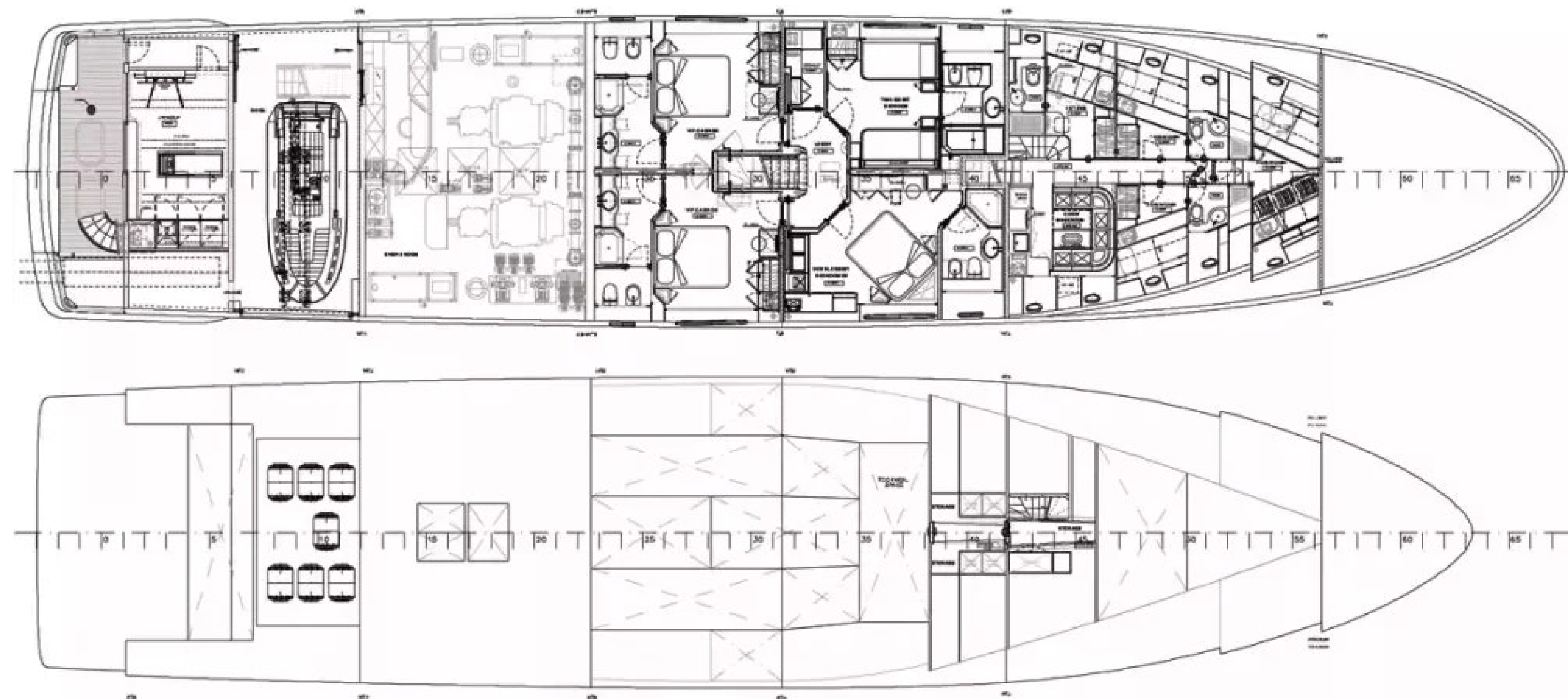














OCEAN*LUX*

Floating expression of *YOU*

www.oceanluxyachts.com

Fort Lauderdale

+1 954 836 9057

Miami

+1 305 686 7051

New York

+1 332 455 0928

Los Angeles

+1 323 986 5808

London

+44 203 962 116

Sydney

+61 272 541 584

Paris

+33 532 63 01 52

Barcelona

+34 931 768 849

Geneva

+41 225 01 74 96

Athens

+30 211 2347975

Moscow

+7 921 8656779