

OCEAN*LUX*

# Emocean



Length: 38.20m / 125.33ft

Guests: 12

Cabins: 5



FEATURES

- Multi-award winning yacht, including Boat Intn’l “displacement yacht of the year” 2022.
- Brand new Rosetti Explorer 38 launched in 2021.
- Explorer design offering the best combination of luxury and comfort.
- Full beam master cabin with private balcony.
- 150 bottle crystal wine cellar in the main salon.
- Sumptuous 3.5m infinity pool on the sun deck.
- Exceptional watertoys and sports equipment list.
- Efficient fuel consumption: 60 ltrs/hr at 9 knots.
- Sundeck with infinity pool.
- Main salon with floor to ceiling windows.
- Skylounge with home theatre system.
- Sundeck Jacuzzi.
- Transatlantic range of 5,000 nautical miles.
- Close beach access using draft of just 2.4m/7.9ft.
- Gym/exercise equipment.

CABINS DISTRIBUTION

1 MASTER	2 DOUBLE	2 TWIN
-------------	-------------	-----------

PRICE

From: \$19,984,000



## SPECIFICATIONS

Length: 38.20m / 125.33ft

Beam: 8.85m / 29.04ft

Draft: 2.53m / 8.30ft

Cruise speed: 11 knots

Max speed: 13 knots

Built: 2021

Builder: Rosetti Superyachts

Exterior design: HydroTec









DESCRIPTION

Emocean, a custom 124' / 37.8m motor yacht by Rosetti Superyachts and designed by HydroTec, is set to be delivered to its owner in 2021. With its sophisticated exterior and engineering, this vessel is perfect for a luxury yacht experience.

Accommodating up to 10 guests in 5 cabins, including a master suite, 2 double cabins, and 2 twin cabins, the yacht's interior is designed to provide comfort to its guests. It can also carry up to 6 crew members in 3 cabins.

Emocean's deck areas feature an outdoor bar, sun lounging areas, and a pool, perfect for cooling off or practicing your technique. The yacht also has a beach club, a well-equipped gym, and a deck jacuzzi.

Guests can stay connected during their voyage with satellite communications and Wi-Fi. Air conditioning is also available on board for a comfortable charter experience.

Powered by 2 MAN (D2868 LE) 425hp diesel engines, the motor yacht can reach a top speed of 13 knots and comfortably cruise at 11 knots. The vessel is equipped with a variety of water toys and accessories, including a Seadoo Spark 900 HO ACE WaveRunner, waterskis, a dive compressor and diving equipment, seabobs, wakeboards, kayaks, bikes, inflatable water toys, and a 6.5m/21'4" Zar Formenti Tender.

Emocean is accepting bookings for the Caribbean and Central America for the winter and the Mediterranean for the summer. It is a unique and ideal platform for a memorable adventure charter.

AMENITIES

Jacuzzi	Sunpads	Wifi	Deck Jacuzzi	Satellite TV	Swimming platform	
Sun Deck	At-Anchor Stabilizers		Gym	Outdoor Bar	Bow Thruster	Satcom
Beach Club	Stabilizers Underway		Swimming Pool		Air Conditioning	





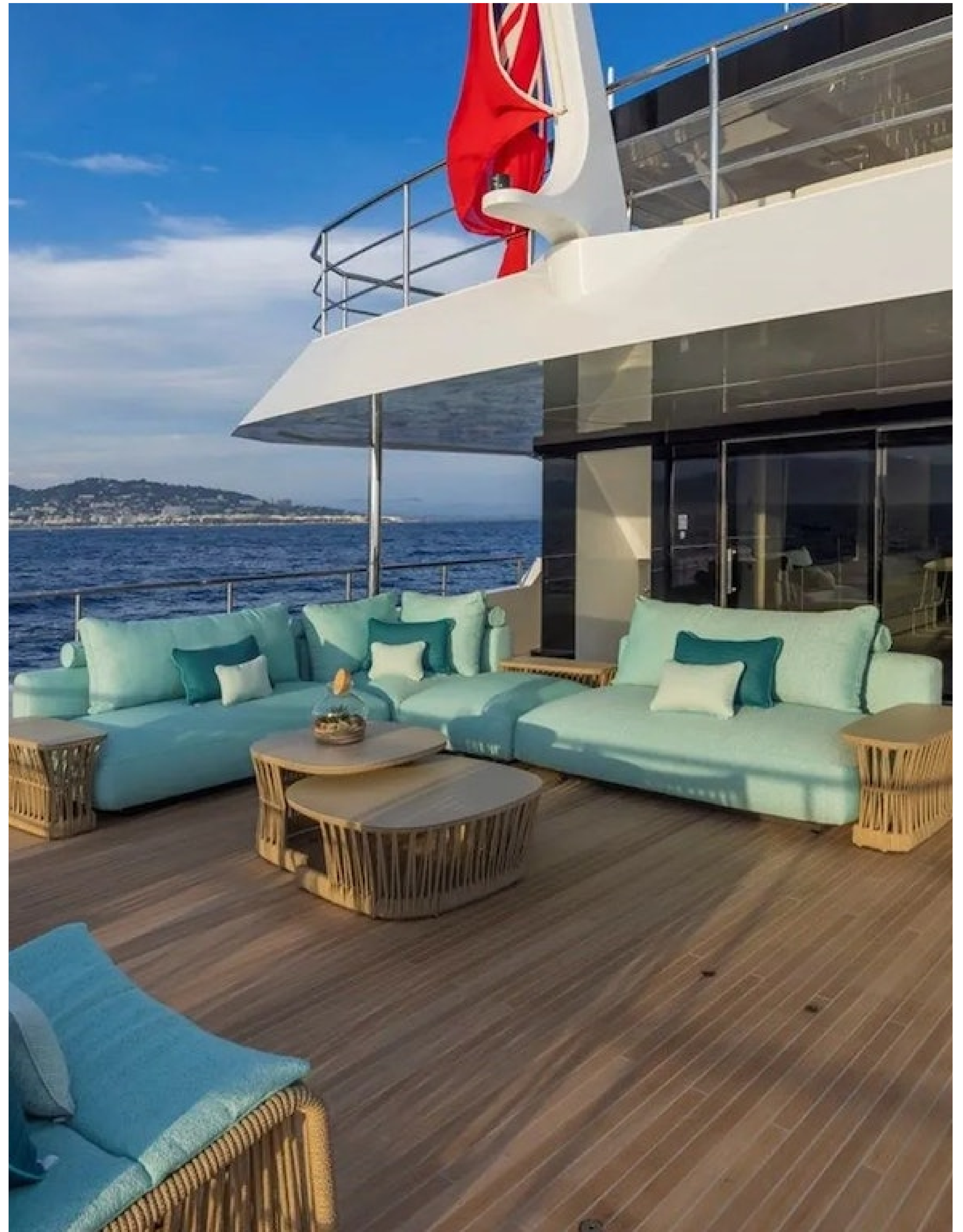
















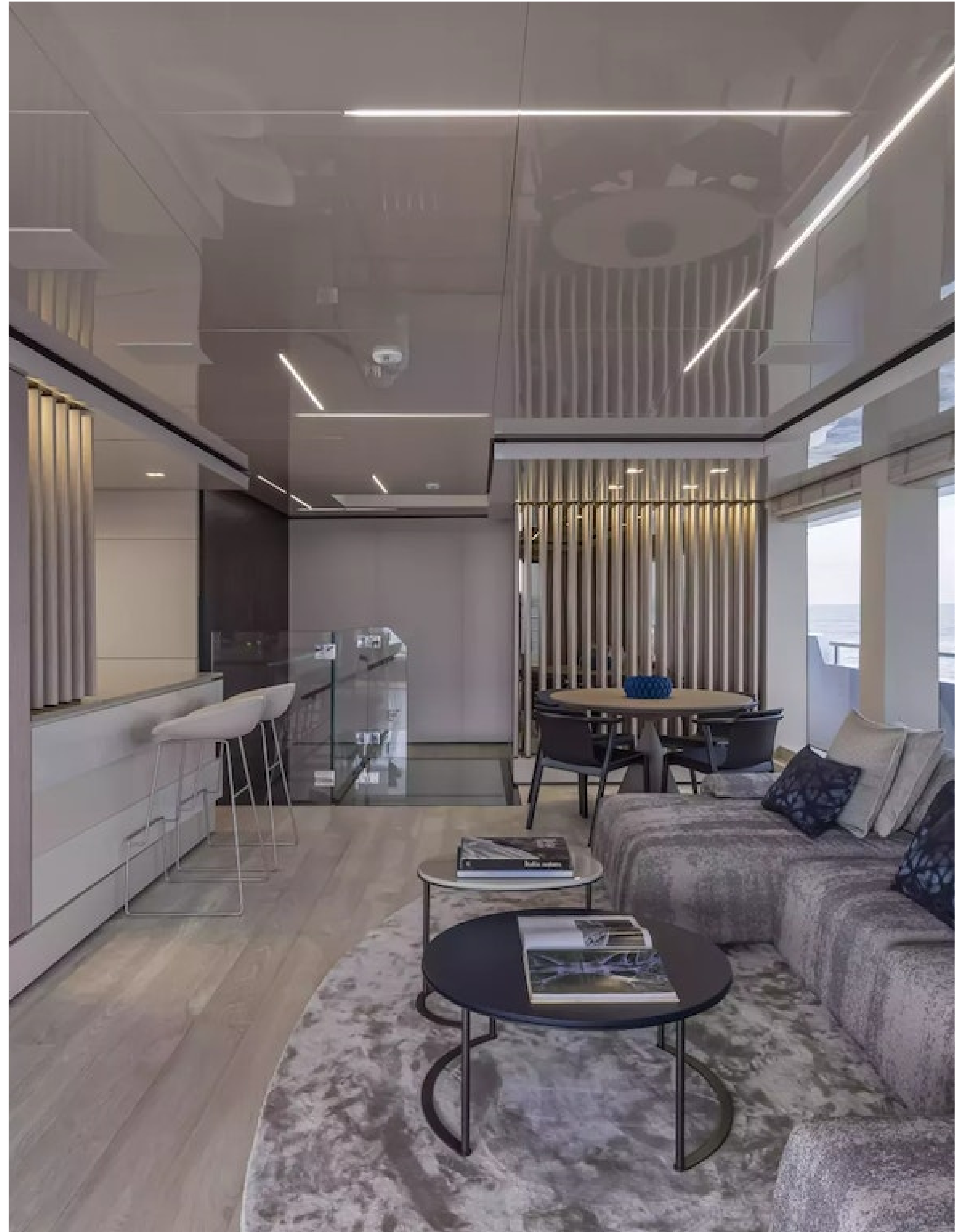


























































# OCEAN*LUX*

Floating expression of *YOU*

---

[www.oceanluxyachts.com](http://www.oceanluxyachts.com)

---

Fort Lauderdale

+1 954 836 9057

Miami

+1 305 686 7051

New York

+1 332 455 0928

Los Angeles

+1 323 986 5808

London

+44 203 962 116

Sydney

+61 272 541 584

Paris

+33 532 63 01 52

Barcelona

+34 931 768 849

Geneva

+41 225 01 74 96

Athens

+30 211 2347975

Moscow

+7 921 8656779