

OCEAN*LUX*

Shake n' bake



Length: 49.82m / 163.45ft

Guests: 12

Cabins: 7

Crew: 12

FEATURES

- RYA Training Centre with PWC (Jetski) Training.
- Proven seaworthy yacht with impressive value.
- Full-beam master suite located on the main deck.
- Great crew on board.
- Modern and luxurious interior design.
- Large outdoor deck areas with plenty of seating and lounging options.
- Outdoor cinema for movie nights under the stars.

CABINS DISTRIBUTION

1 MASTER	2 VIP	3 DOUBLE	1 TWIN
-------------	----------	-------------	-----------

PRICE BY SEASON

Summer
From: \$150,000 /week + expenses

Winter
From: \$156,000 /week + expenses

Shake n' bake

OCEAN*LUX*

SPECIFICATIONS

Length: 49.82m / 163.45ft

Beam: 8.43m / 27.66ft

Draft: 3.50m / 11.48ft

Cruise speed: 12 knots

Max speed: 13 knots

Built: 1981 · 2011 (Refitted)

Builder: Campanella

Exterior design: G. Magrini

Interior design: H2 Yacht Design





DESCRIPTION

The motor yacht formerly known as "Mary Jean," now named "Shake N Bake TBD," was constructed by Campanella shipyard and measures 49.82m/163'5". Featuring interior styling by H2 Yacht Design, this yacht provides adaptable accommodation for up to 12 guests across 7 cabins. Shake N Bake TBD is ideal for luxurious yacht charters with friends or family, with a variety of inviting spaces for relaxation and a range of water toys available for your enjoyment.

Guests can make themselves comfortable in one master suite, two VIP cabins, three double cabins, and one twin cabin. The yacht can accommodate up to 12 crew members to ensure a smooth and pleasurable charter experience. The onboard gym and deck jacuzzi are just a couple of the many features designed for your comfort and entertainment. The yacht also provides Wi-Fi connectivity, air conditioning, and an onboard stabilization system to enhance your charter experience.

With a steel hull and aluminium superstructure, Shake N Bake TBD is powered by twin Nohab-Polar engines, reaching a top speed of 15 knots and comfortably cruising at 13 knots. The yacht can travel up to 3,500 nautical miles with its 80,000 litre fuel tanks. When not cruising, guests can enjoy a variety of water toys such as Jet Skis, towable toys, waterskis, scuba diving equipment, wakeboards, snorkelling equipment, and two tenders. One of the tenders is a 7.92m/26' Boston Whaler.

Shake N Bake TBD and its experienced crew of 12 are available for charter in Bermuda and the Caribbean this winter, with bookings already being accepted for cruising the Mediterranean this summer. The crew is dedicated to exceeding your every need during your stay aboard this impressive motor yacht.

AMENITIES

- Jacuzzi
- Gym
- Stabilizers Underway
- Air Conditioning
- Wifi
- Deck Jacuzzi

TOYS

- 2 x Jet Skis
- Snorkeling Equipment
- Water Skis
- 2 x Wakeboards
- Towable Toys
- 3 x Towable Toys
- Diving equipment
- 2 x Tenders

For full list of available amenities & toys or price to hire additional equipment please contact us

Shake n' bake

OCEANLUX





Shake n' bake

OCEANLUX





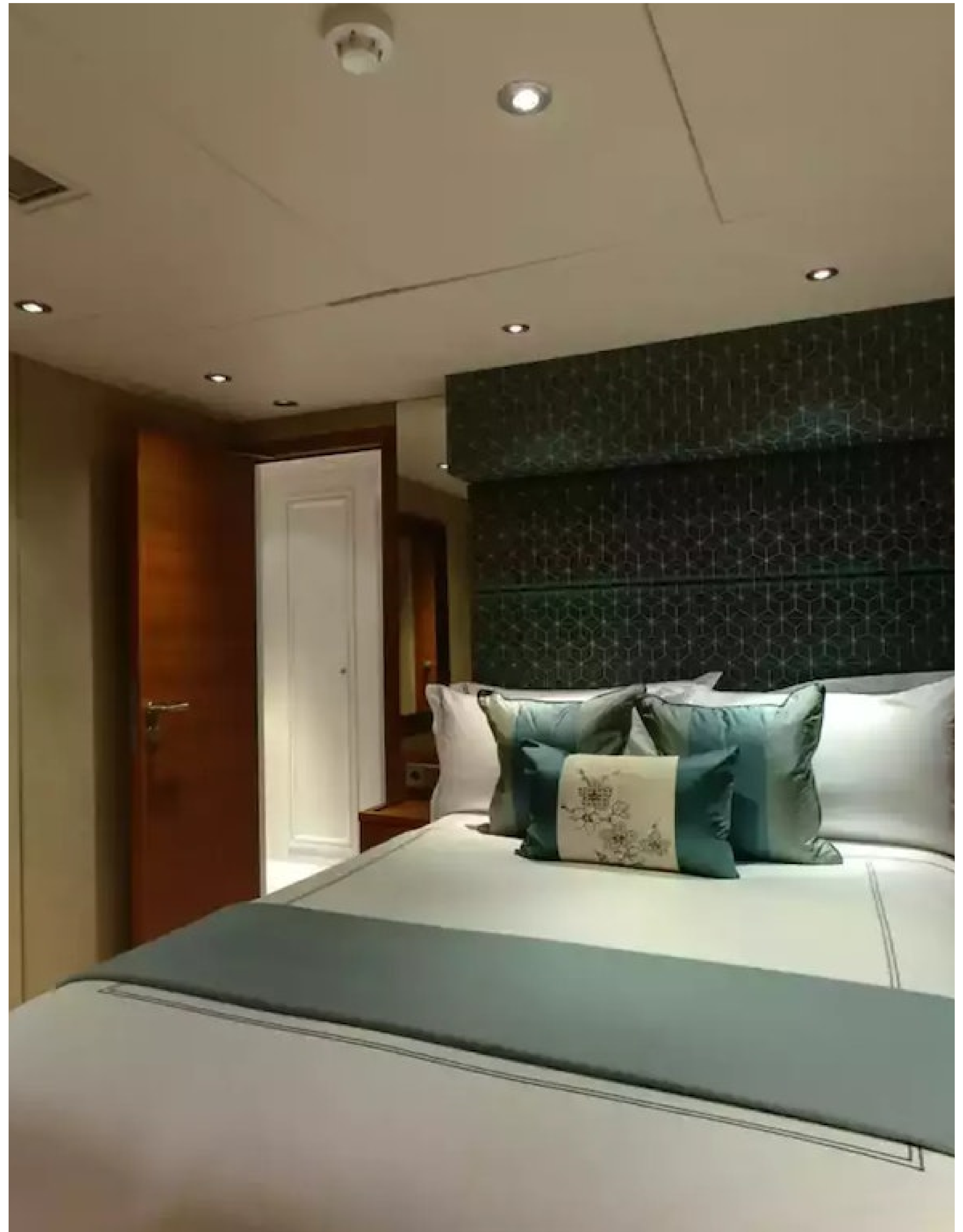
Shake n' bake

OCEANLUX





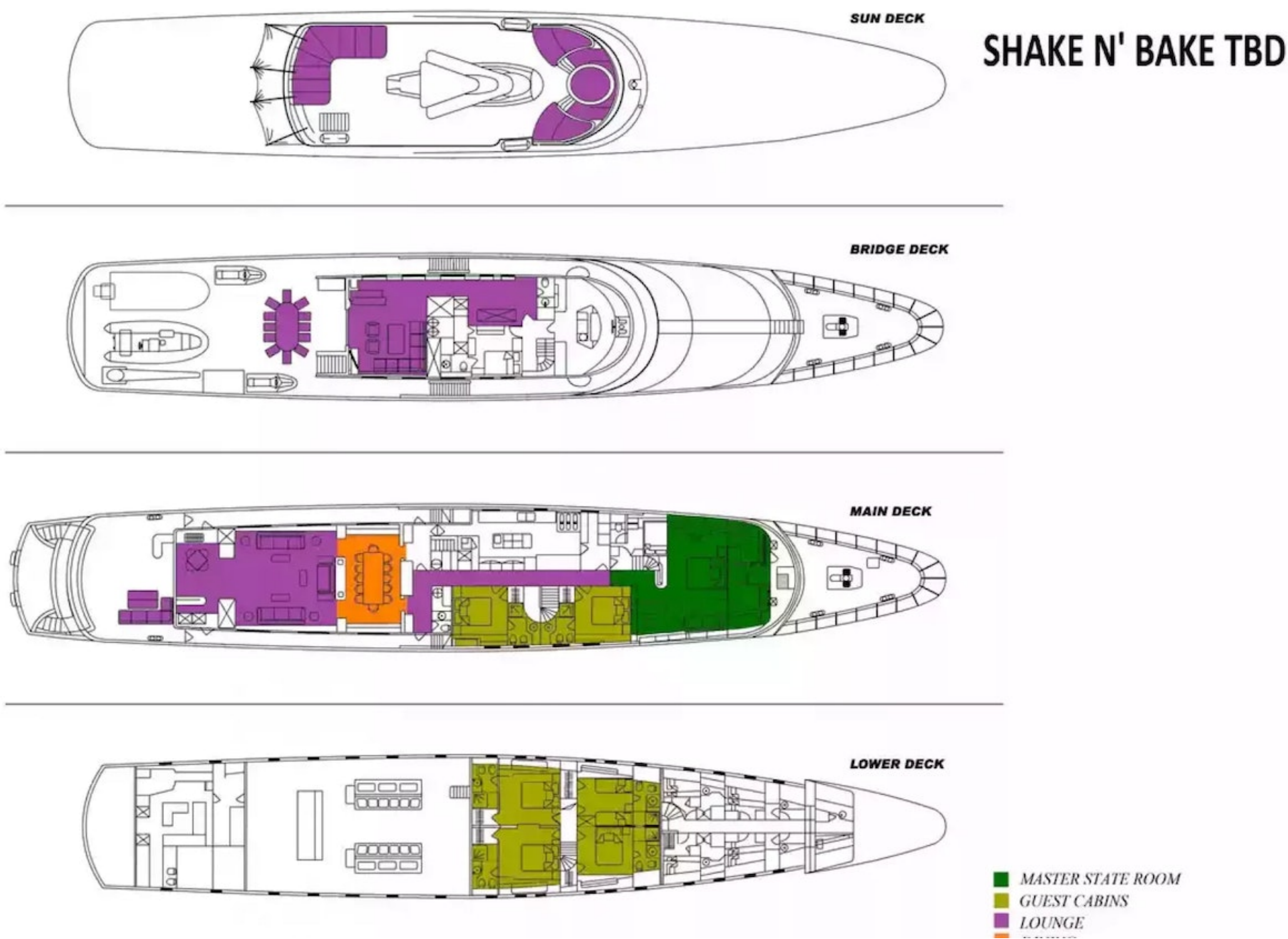


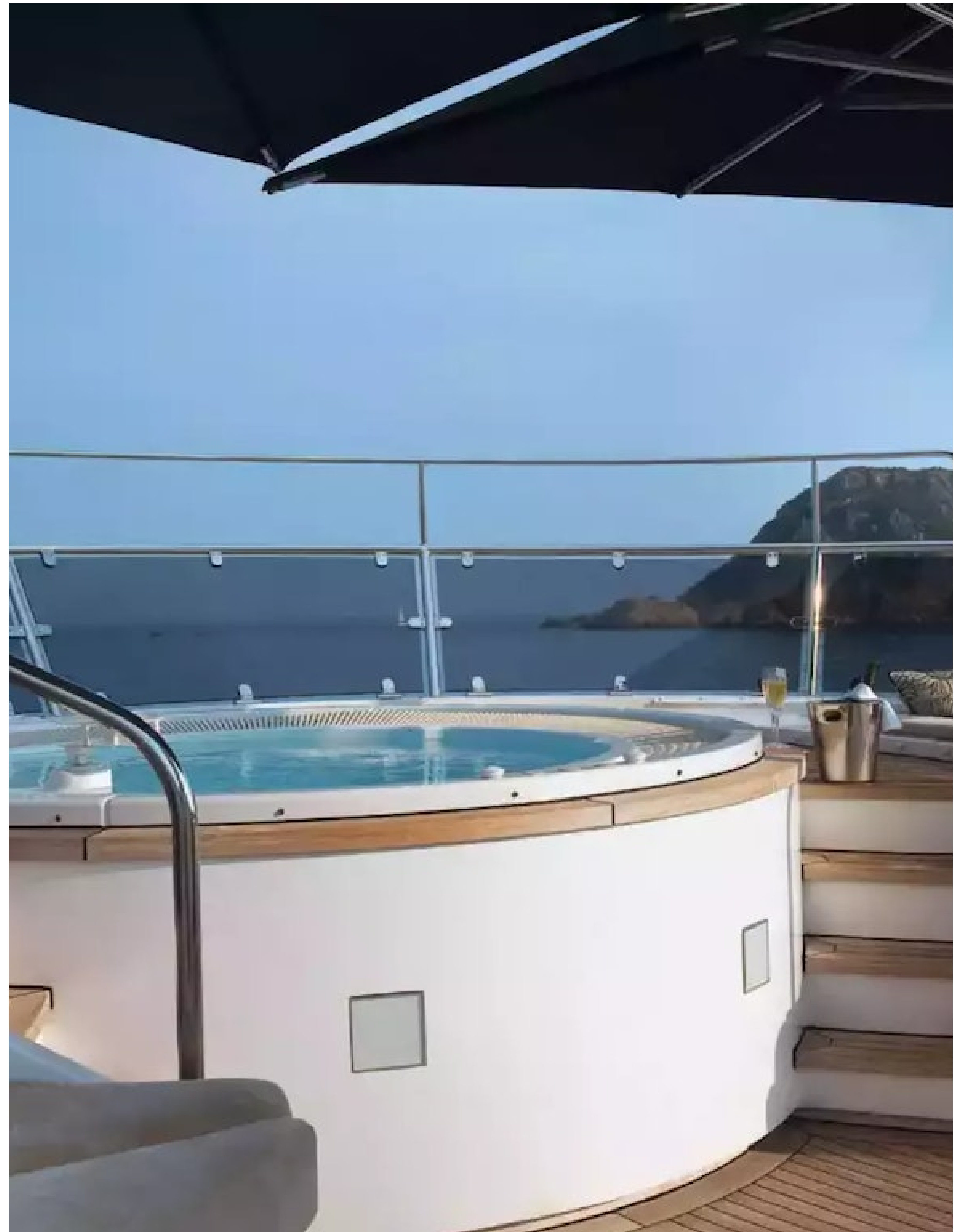






Shake n' bake





OCEAN*LUX*

Floating expression of *YOU*

www.oceanluxyachts.com

Fort Lauderdale

+1 954 836 9057

Miami

+1 305 686 7051

New York

+1 332 455 0928

Los Angeles

+1 323 986 5808

London

+44 203 962 116

Sydney

+61 272 541 584

Paris

+33 532 63 01 52

Barcelona

+34 931 768 849

Geneva

+41 225 01 74 96

Athens

+30 211 2347975

Moscow

+7 921 8656779