

OCEAN*LUX*

Skyfall



Length: 57.91m / 189.99ft

Guests: 12

Cabins: 6

Crew: 14

FEATURES

- Split-level master suite with panoramic views.
- Elevator servicing all decks.
- Jacuzzi and plunge pool suitable for children.
- State-of-the-art audiovisual entertainment system.
- Touch-and-go helipad.
- Continuous refits and investment to keep SKYFALL at the highest standard.
- At-anchor stabilizers.
- Large wine cellar.
- Spacious skylounge with panoramic views.
- Multiple large living spaces.
- Six staterooms accommodating up to 12 guests.
- Over 3,000 square feet of exterior deck spaces.
- Extensive water toy selection including towed tender.
- Wheelchair-friendly VIP cabin.
- Hot tub and splash pool.

CABINS DISTRIBUTION

1 MASTER	1 VIP	3 DOUBLE	1 TWIN
-------------	----------	-------------	-----------

PRICE BY SEASON

Summer
From: \$373,000 /week + expenses

Winter
From: \$301,000 /week + expenses

Skyfall

OCEAN*LUX*

SPECIFICATIONS

Length: 57.91m / 189.99ft

Beam: 10.20m / 33.46ft

Draft: 2.60m / 8.53ft

Cruise speed: 13 knots

Max speed: 21 knots

Built: 2010 · 2018 (Refitted)

Builder: Trinity

Exterior design: Trinity Yachts

Interior design: Patrick Knowles



Skyfall

OCEANLUX



DESCRIPTION

The 189.99ft /57.91m custom motor yacht 'SKYFALL' was built in 2010 by Trinity Yachts. The yacht’s exterior styling and entire engineering package is thanks to the in-house team at Trinity Yachts, while the luxurious interior design is the work of Patrick Knowles.

A highlight of the all-aluminium SKYFALL is her shallow draft, which allows her to access shallow waters that other yachts of her size cannot reach. All decks offer alfresco dining options, but the hub of any luxury charter is sure to be the sundeck where a hot tub and shallow splash pool surrounded by sun pads sit forward of a semi-circular bar.

Described as ‘urban contemporary with overtones of Zen’, the interior design of SKYFALL features an abundance of woods and stones, beautifully etched glass and unusual materials such as petrified tree trunks. Other highlights include an unusual foyer aft boasting a statement wine cabinet and a Tiger’s Eye bar top in the sky lounge.

Skyfall's interior layout sleeps up to 12 guests in 7 rooms, including a split-level master suite, 1 VIP stateroom, 3 double cabins, 1 twin cabin and 4 Pullman beds. She is also capable of carrying up to 13 crew onboard to ensure every need is catered for.

Whether dining alfresco on the raised aft deck, playing cards at the games table in the skylounge or unwinding in the sundeck’s hot tub, charter guests will love the opportunities SKYFALL presents for socializing with family and friends.

A custom semi-displacement yacht, SKYFALL boasts a state-of-the-art stabilization system, which reduces roll motion and results in a smoother, more enjoyable cruising experience. She also features ‘at anchor stabilizers’, which work at zero speed to increase on-board comfort both at anchor and on rough waters.

Able to reach an impressive top speed of 21 knots, the motor yacht cruises at a more economical 14 knots and has a range of 1,666nm from her 22,000litre fuel tanks, making her an exceptional combination of performance and luxury.

AMENITIES

Jacuzzi	ipod Docking	Beach Club	Satellite TV	Stabilizers Underway
At-Anchor Stabilizers	Elevator	Wifi	Deck Jacuzzi	Air Conditioning
Video On-Demand	Gym	Wheelchair Accessible		

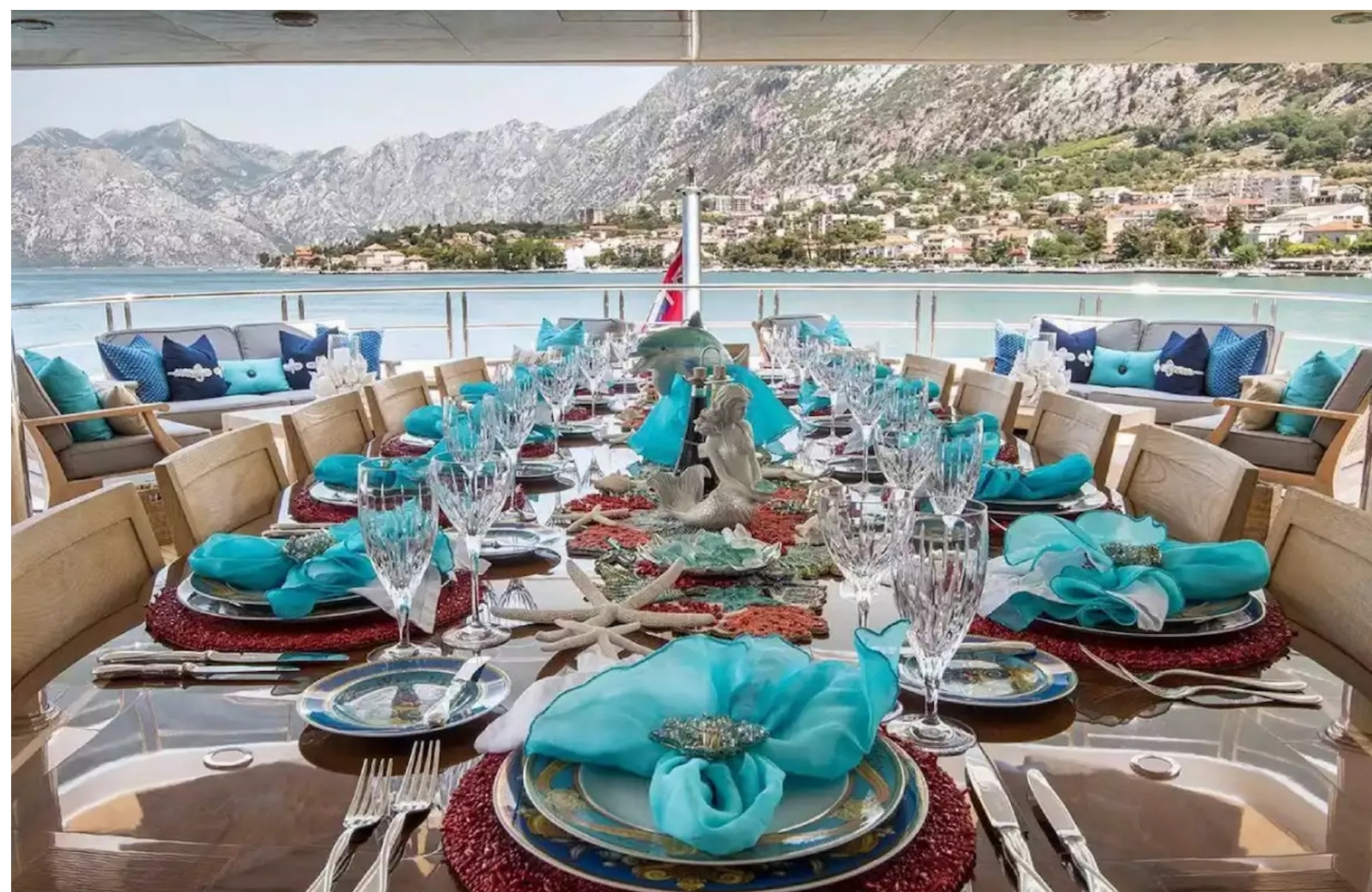
TOYS

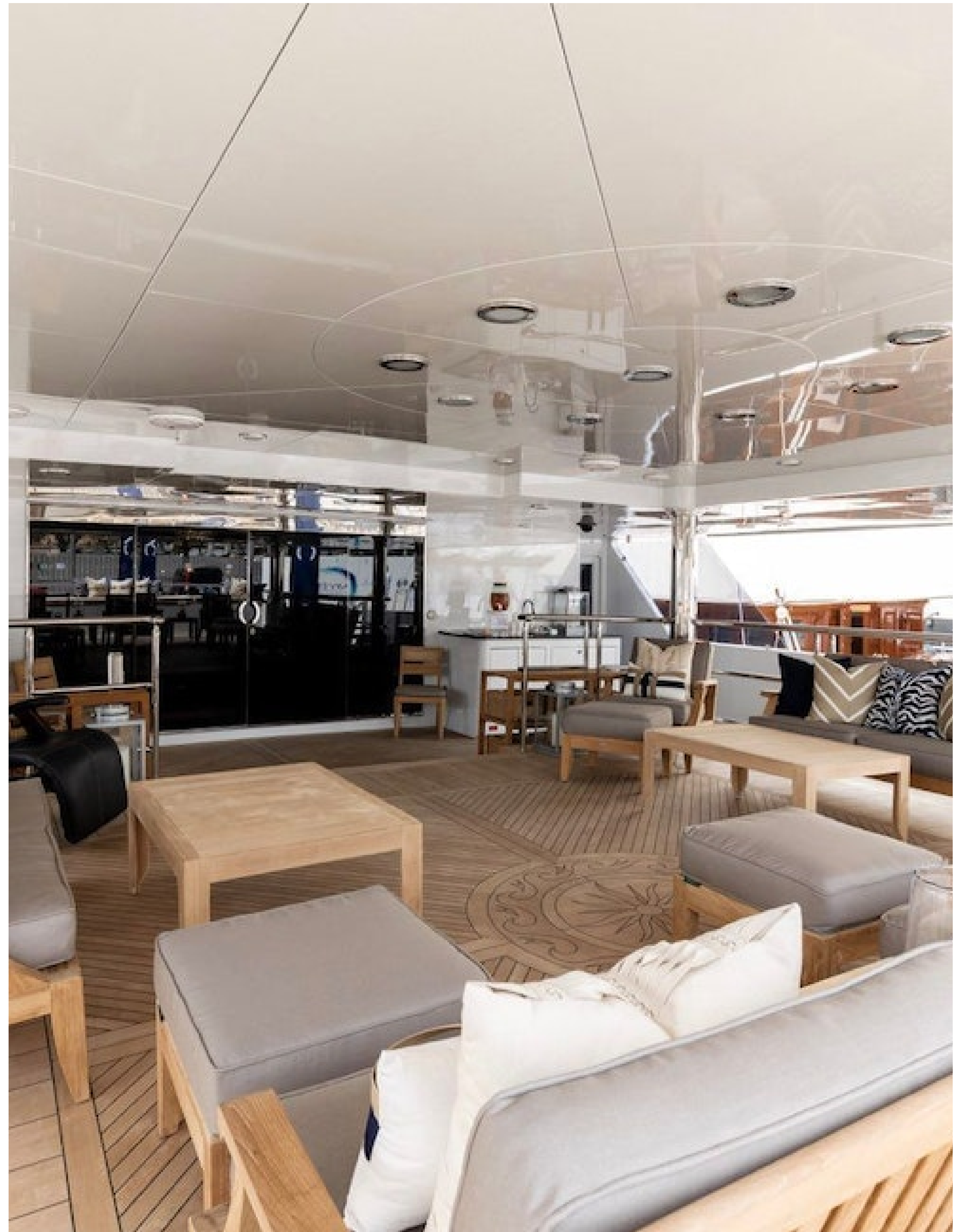
2 x Jet Skis	4 x Seabobs	2 x Paddleboards	6 x Hobie Pedal Board	6 x Bikes
1 x Wakeboard	1 x Water Ski	Inflatable Trampoline	Snorkeling Equipment	
Anti jellyfish pool	Floating dock off the swim platform	Inflatable toys		
3 x Tenders				

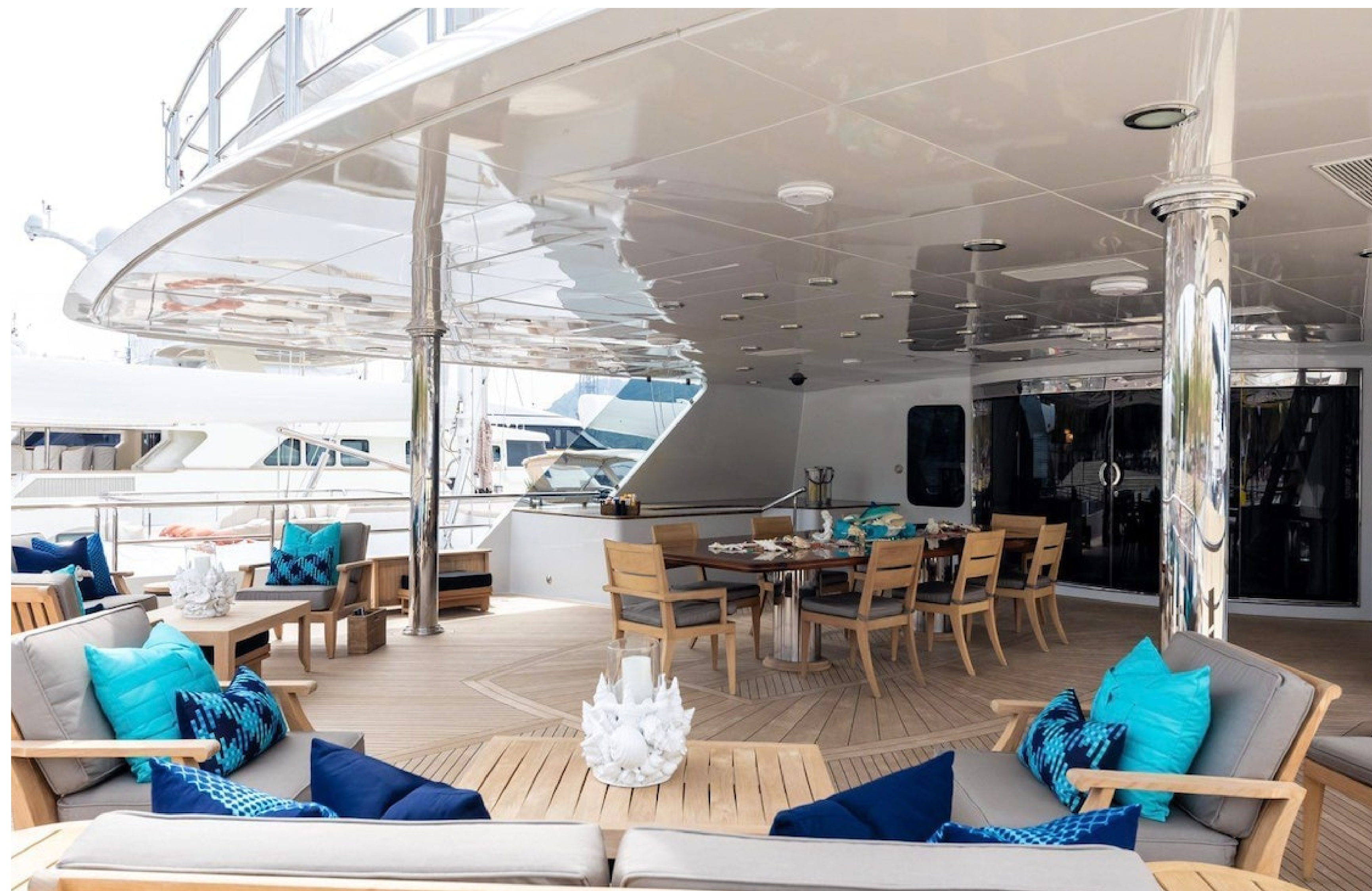
For full list of available amenities & toys or price to hire additional equipment please contact us













Skyfall

OCEANLUX

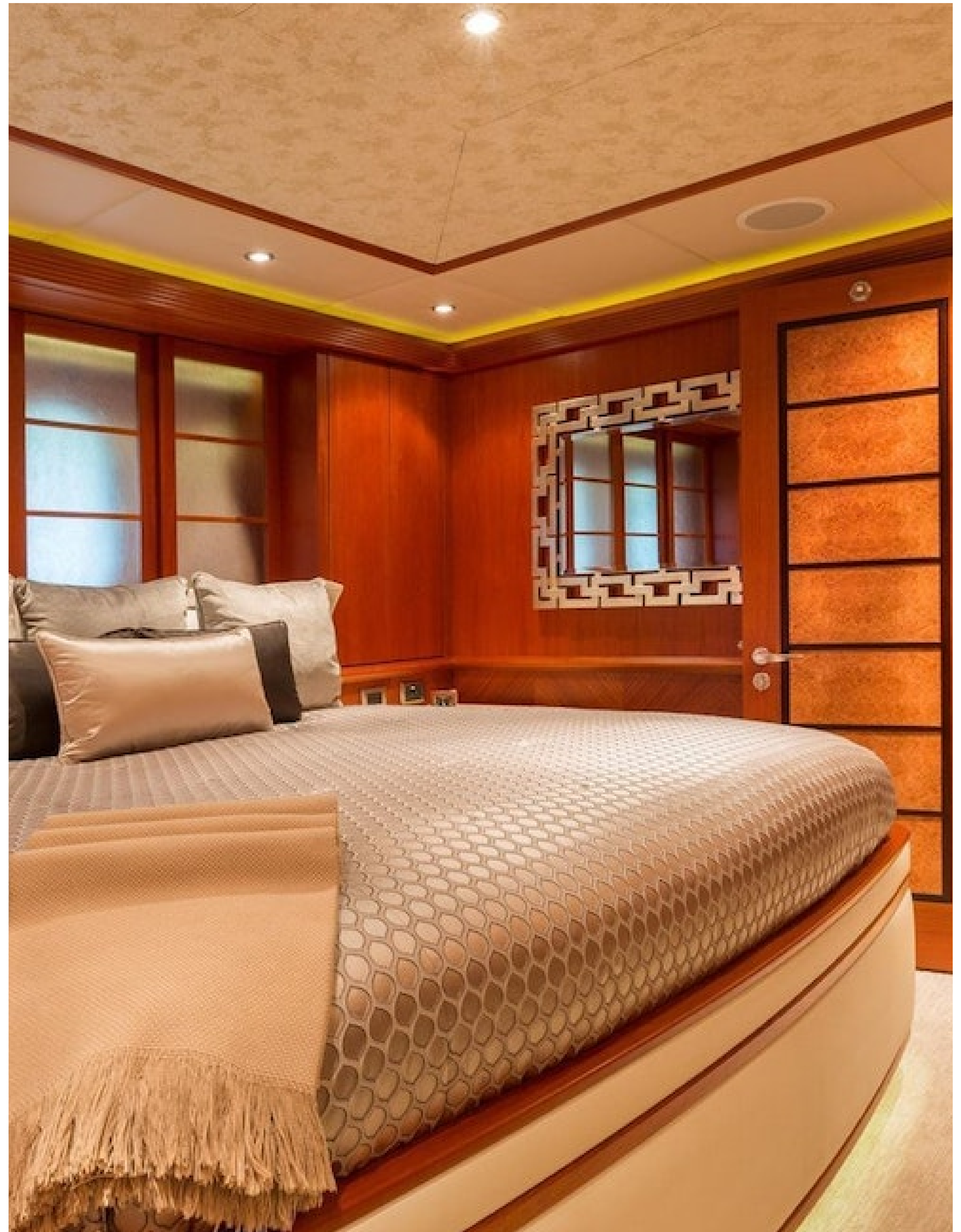






















OCEAN*LUX*

Floating expression of *YOU*

www.oceanluxyachts.com

Fort Lauderdale

+1 954 836 9057

Miami

+1 305 686 7051

New York

+1 332 455 0928

Los Angeles

+1 323 986 5808

London

+44 203 962 116

Sydney

+61 272 541 584

Paris

+33 532 63 01 52

Barcelona

+34 931 768 849

Geneva

+41 225 01 74 96

Athens

+30 211 2347975

Moscow

+7 921 8656779