

OCEAN*LUX*

Cloudbreak



Length: 75.00m / 246.06ft

Guests: 11

Cabins: 6

Crew: 22

FEATURES

- Exterior design by Espen Oeino.
- Spacious deck areas.
- Furnishings chosen by PH.D architectural bureau.
- Interior design by Christian Liaigre.
- Master cabin with two balconies.
- Extensive wellness center with large balcony.
- Wide selection of water toys.
- Observation tower Eagle's nest.
- Winter garden on bridge deck.
- Large master suite.
- Explorer yacht with beach club and helipad.
- Global explorer yacht for any cruising conditions.
- Minimalistic award-winning interior design.
- Spa pool, sauna, and gym.
- Elevator and tender garage.
- Dedicated itinerary viewing room.

CABINS DISTRIBUTION

1 MASTER	3 DOUBLE	2 TWIN
-------------	-------------	-----------

PRICE BY SEASON

Summer
From: \$835,000 /week + expenses

Winter
From: \$835,000 /week + expenses

Cloudbreak

OCEAN*LUX*

SPECIFICATIONS

Length: 75.00m / 246.06ft

Beam: 12.40m / 40.68ft

Draft: 3.45m / 11.32ft

Cruise speed: 12 knots

Max speed: 15 knots

Built: 2016

Builder: Abeking & Rasmussen

Exterior design: Espen Oeino

Interior design: Christian Liaigre





DESCRIPTION

Cloudbreak is a luxurious 75m/246’1" expedition yacht, built by the renowned German shipyard Abeking & Rasmussen in 2016. It is designed for adventure and exploration, making it ideal for guests who want to travel to the most remote places around the world. This multi-award-winning yacht can accommodate up to 12 guests in six cabins, including a master suite, three double cabins, and two twin cabins. The interior styling of Cloudbreak is courtesy of Christian Liaigre, adding to the yacht's elegance.

The yacht is equipped with a wide range of amenities for the comfort and entertainment of guests. These include a helipad, spa, underwater lights, beach club, gym, and a stunning fireplace, making it easy for guests to relax and unwind. Guests can also take advantage of the indoor-outdoor living and entertaining provided by the beach club or work out in the well-equipped gym. The deck jacuzzi and pool are perfect for enjoying the scenery or taking a dip.

Cloudbreak's excellent features include a helipad, which allows guests to travel seamlessly to and from land, and satellite communications to stay connected to the outside world. Additionally, it has Wi-Fi connectivity, air conditioning, and underwater lights, providing comfort and convenience to guests on board.

The yacht is powered by twin Caterpillar engines, offering a cruising speed of 12 knots and a maximum speed of 15 knots. With a range of up to 7,500 nautical miles from its 220,000-litre fuel tanks, Cloudbreak is perfect for long voyages. It also features at-anchor stabilizers for exceptional comfort levels and a full-displacement hull for stability when anchored.

Onboard Cloudbreak, guests can enjoy a large selection of toys and accessories, including a Flyboard, Jet Skis, Kite Surfers, scuba diving equipment, seabob, wakeboards, kayaks, and wakesurf boards, to keep them entertained on the water.

The yacht is staffed by a crew of 22, specializing in creating exceptional charters to make guests' vacations unforgettable. Cloudbreak is available for charter in South East Asia and the South Pacific, making it the perfect choice for guests who want to explore the region's remote places in style and comfort.

AMENITIES

Deck Jacuzzi	Jacuzzi	Tender Garage	Underwater Lights	Fire Place	Helipad
Commercial Helipad	Wifi	Video On-Demand	At-Anchor Stabilizers		
Swimming Pool	Satcom	Spa	Gym	Beach Club	Air Conditioning
				Golf	

TOYS

3 x Jet Skis	4 x Kayaks	4 x Seabobs	1 x Fly board	10 x Kitesurfer
4 x Windsurfer	3 x Wakeboards	2 x Wakeskate	2 x Wakesurf	
1 x Fishing Equipment	1 x Diving equipment			

For full list of available amenities & toys or price to hire additional equipment please contact us





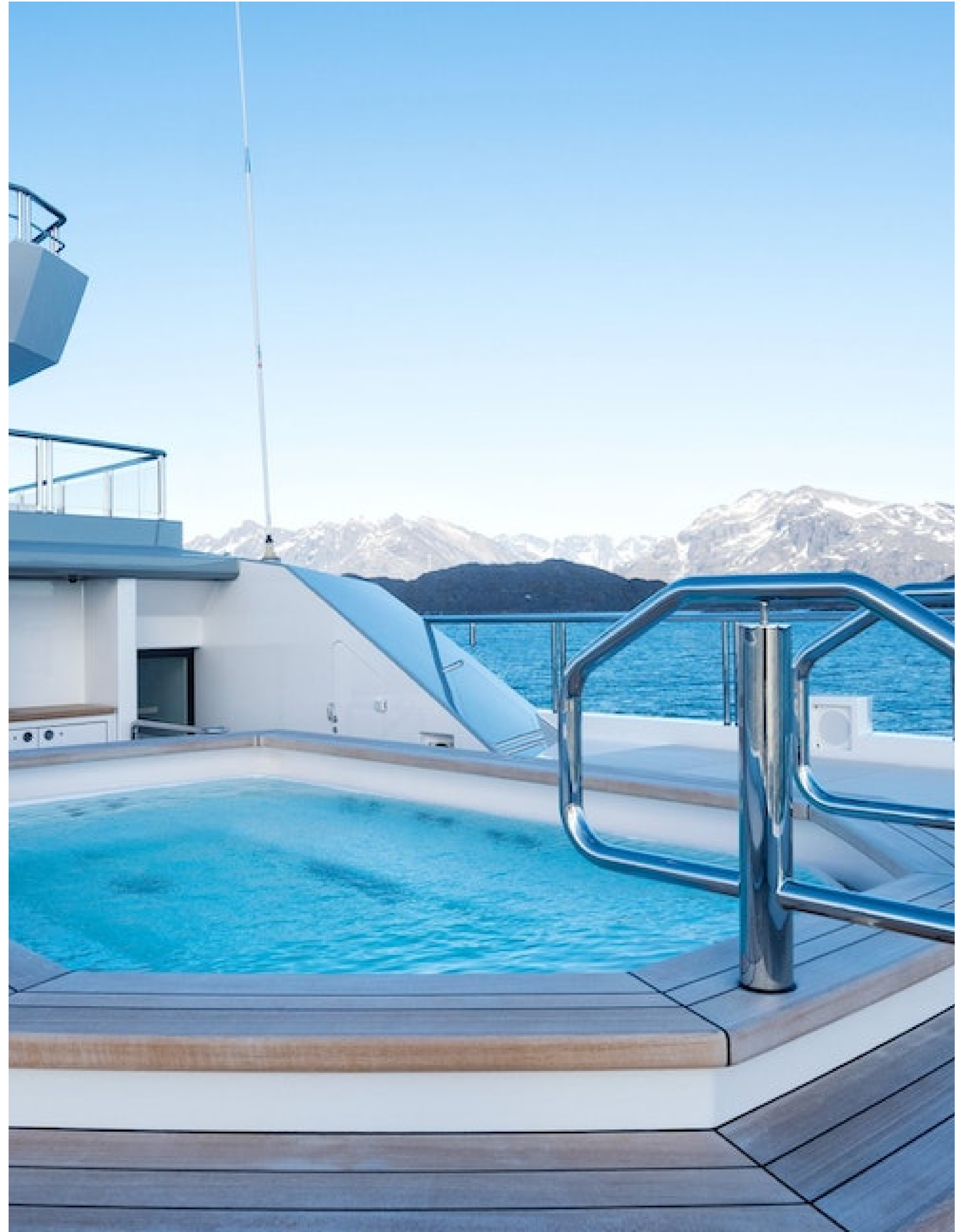








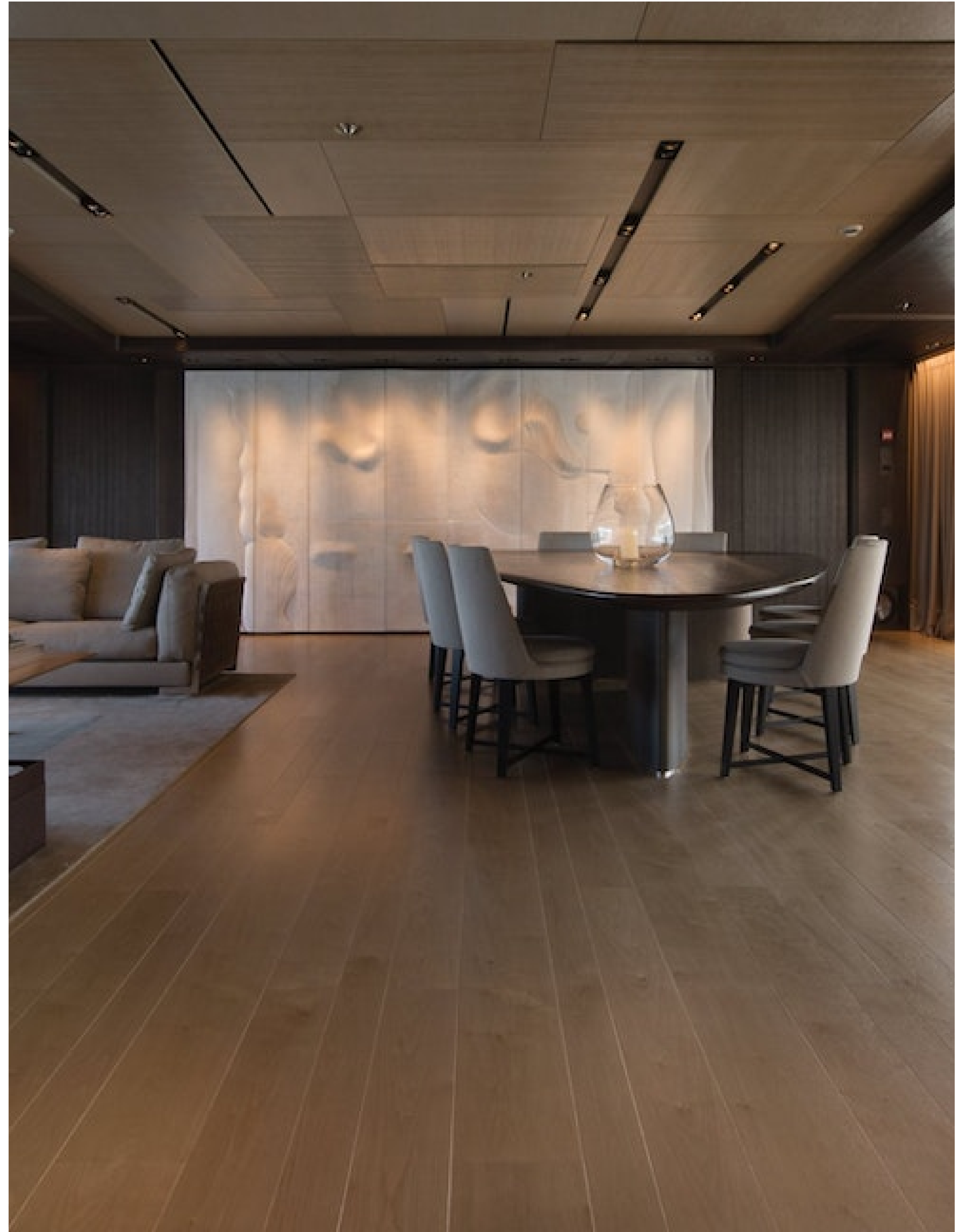








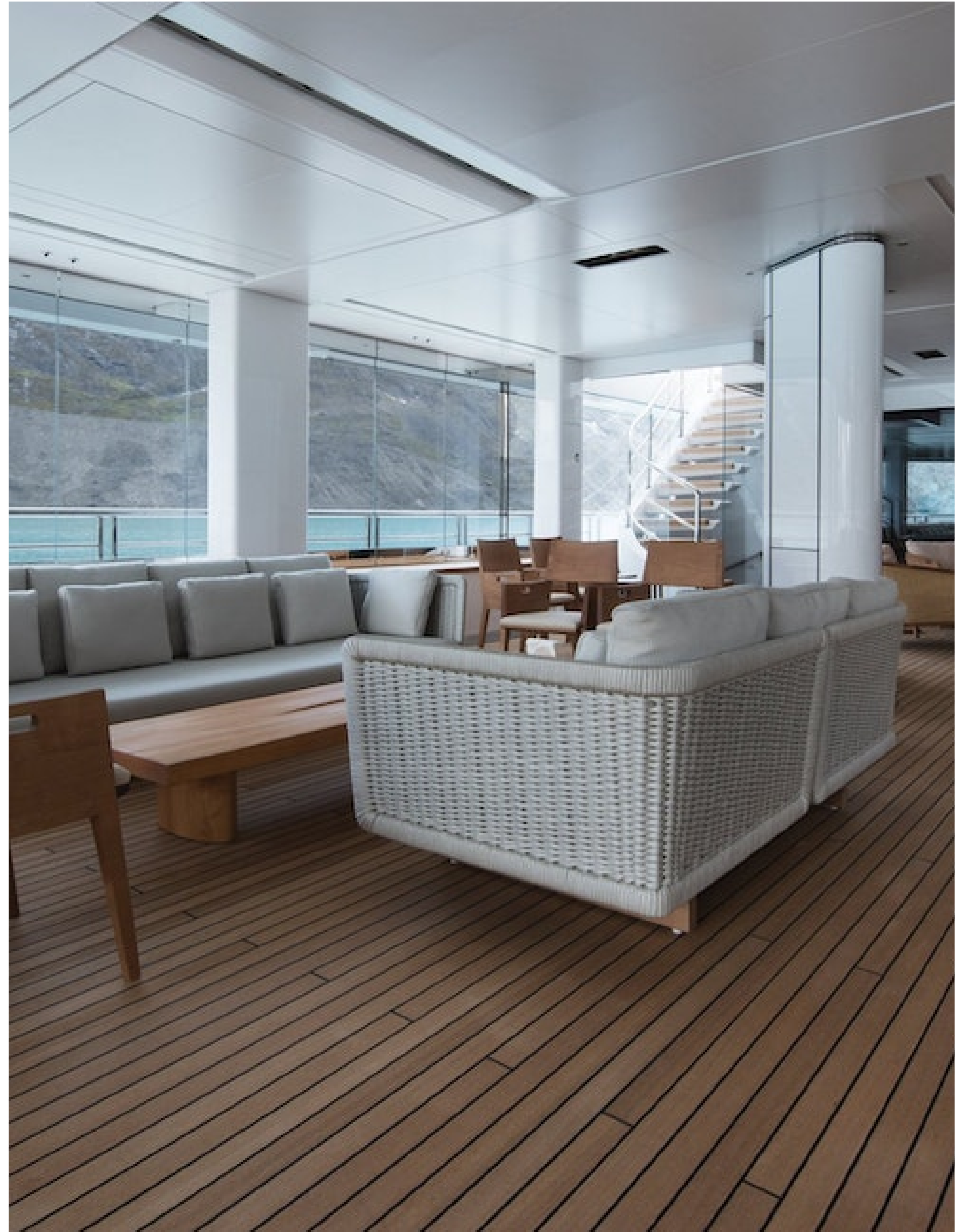










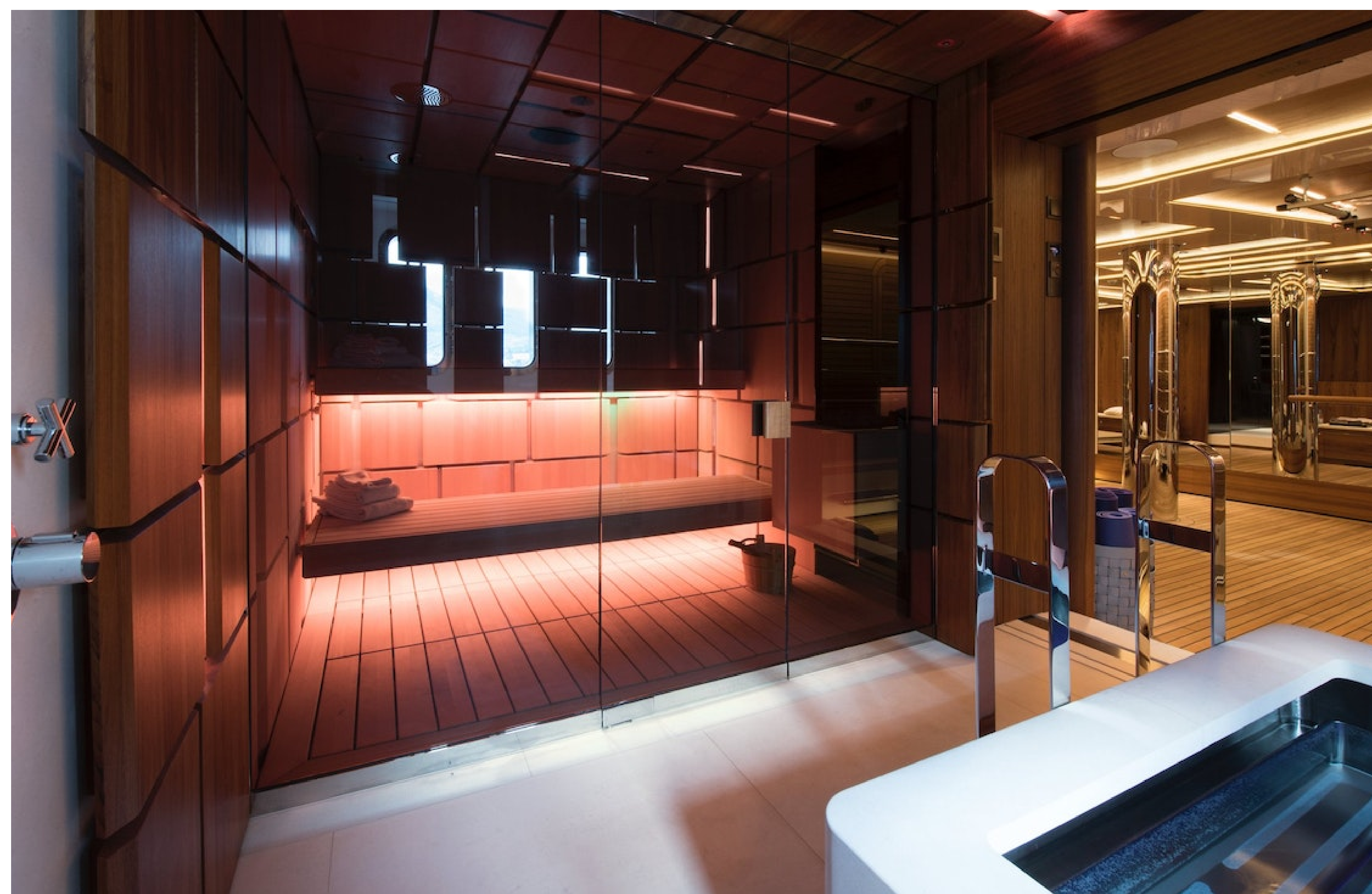












OCEAN*LUX*

Floating expression of *YOU*

www.oceanluxyachts.com

Fort Lauderdale

+1 954 836 9057

Miami

+1 305 686 7051

New York

+1 332 455 0928

Los Angeles

+1 323 986 5808

London

+44 203 962 116

Sydney

+61 272 541 584

Paris

+33 532 63 01 52

Barcelona

+34 931 768 849

Geneva

+41 225 01 74 96

Athens

+30 211 2347975

Moscow

+7 921 8656779