

OCEAN*LUX*

Utopia



Length: 71.60m / 234.91ft

Guests: 12

Cabins: 6

Crew: 17

FEATURES

- Six voluminous decks designed for entertaining, providing ample space for guests to socialize and relax.
- Duplex sundeck space replete with a Jacuzzi that's 15m above the rest of the yacht, offering breathtaking views of the surrounding seascape.
- Palatial upper deck master suite, fitted with private gym, lounge, al-fresco dining terrace and breakfast terrace, for ultimate luxury and comfort.
- Staggering array of water toys, including a 10m water slide, for endless fun on the water.
- Even features a newspaper printing facility for guests to stay up-to-date on the latest news.
- Floor-to-ceiling windows feature throughout vessel, allowing for natural light and stunning views.
- Split-level deck, providing additional space for guests to enjoy.
- 17 crew members to ensure guests receive excellent service.
- Features a Chris-Craft guest tender for easy transportation to and from shore.
- Formal dining room for elegant meals onboard.
- Fully equipped gymnasium for guests to stay fit and active at sea.
- BBQ on helideck for outdoor dining and entertaining.
- Beach set up for a day of fun in the sun.
- Master cabin with a private terrace for ultimate privacy and relaxation.
- 360° breathtaking view 15m above the sea for stunning panoramic views.

CABINS DISTRIBUTION

1	2	3
MASTER	DOUBLE	TWIN

PRICE BY SEASON

Summer
From: \$484,000 /week + expenses

Winter
From: \$484,000 /week + expenses

SPECIFICATIONS

Length: 71.60m / 234.91ft

Beam: 11.40m / 37.40ft

Draft: 3.60m / 11.81ft

Cruise speed: 14 knots

Max speed: 15 knots

Built: 2004 · 2018 (Refitted)

Builder: Feadship

Exterior design: De Voogt, Guido de Groot Design

Interior design: RWD





DESCRIPTION

The 'Utopia' motor yacht, built by the Dutch shipyard Feadship, is available for charter and can accommodate up to 12 guests in 6 cabins. The yacht was designed by British designer RWD and boasts an abundance of space and luxurious amenities across her decks, including an elevator and gym.

The exterior of the yacht features six decks, including a duplex sun deck, an owner’s deck, and a vast main deck that provides both indoor and outdoor entertaining space. A lower deck offers crew living quarters, while an under lower deck enables them to operate the yacht without access to guest areas.

The interior of the yacht is styled in a contemporary design with modern furniture set against light oak paneling and mahogany inlays. The lower deck features two large guest suites, with an additional four suites located on the main deck forward. The entire deck above is a 200 sq m owner’s suite. Utopia is also child-friendly, making it an ideal choice for families.

Guest accommodation comprises a master suite, two double cabins, and three twin cabins. The yacht can carry up to 17 crew members to ensure a relaxed luxury yacht charter experience. Onboard, guests can enjoy a gym with the latest equipment to maintain their fitness routine, a deck jacuzzi to soak up the scenery, and an elevator that makes every part of the yacht easily accessible.

Utopia is built with a steel hull and aluminum superstructure, providing greater onboard space and stability when at anchor thanks to her full-displacement hull. Powered by twin Caterpillar engines, she can cruise comfortably at 14 knots and reaches a maximum speed of 15 knots with a range of up to 5,000 nautical miles from her 156,700-liter fuel tanks at 13 knots. At-anchor stabilizers provide exceptional comfort levels.

When not cruising, Utopia offers an incredible selection of water toys and accessories, including two Lazer sailboats, Jet Skis, WaveRunners, waterskis, wakeboards, kayaks, WindSurfers, and scuba diving equipment. The yacht also features three tenders, including an 8.5m/27'11" RIB.

The yacht is manned by 16 to 18 crew members and includes an impressive audio-visual entertainment system, a state-of-the-art integrated bridge, and a helicopter pad with refueling facilities. The

AMENITIES

Deck Jacuzzi	Jacuzzi	Wifi	Air Conditioning		Video On-Demand	
At-Anchor Stabilizers		Satcom	Gym	Elevator	Satellite TV	Games Consoles

TOYS

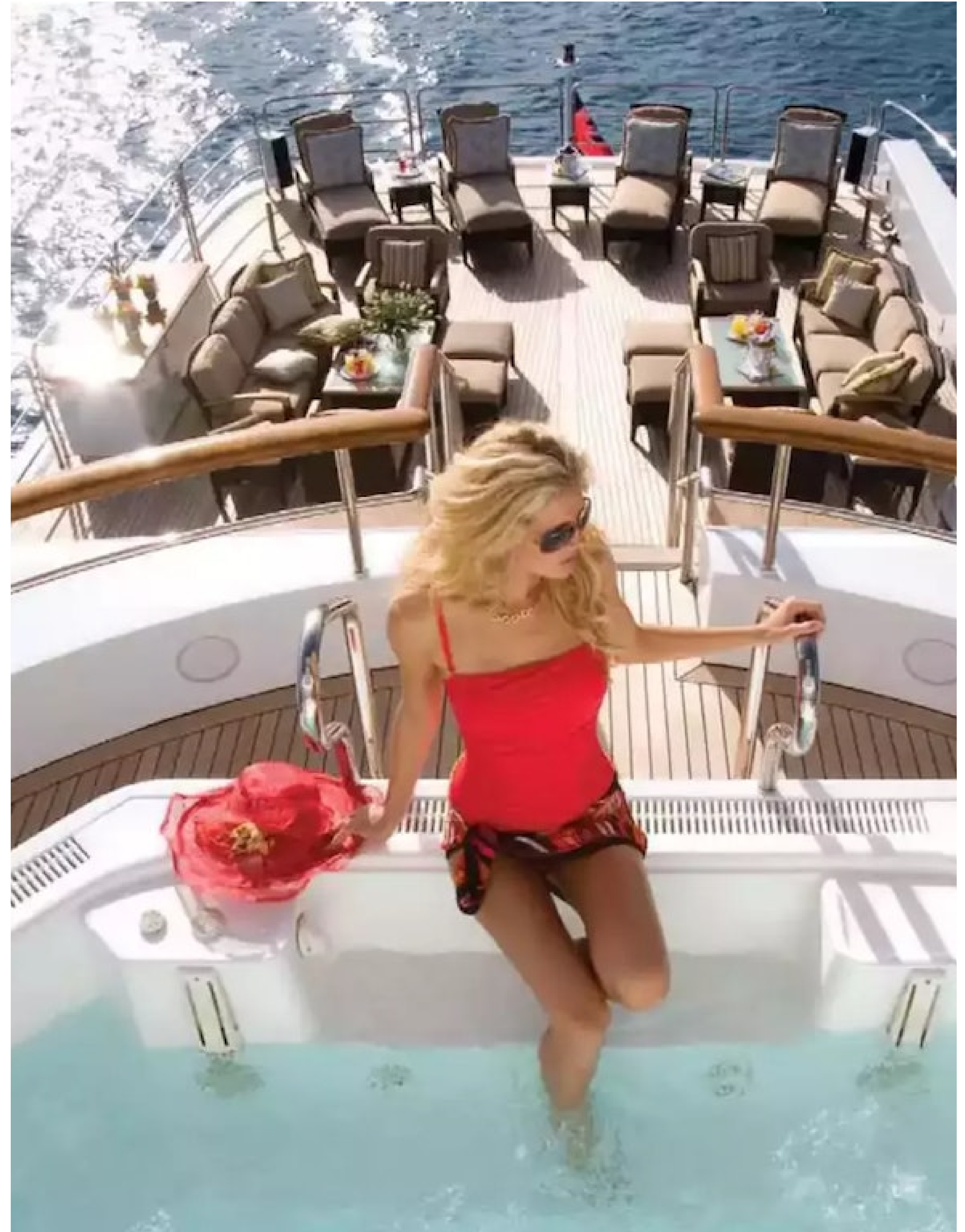
4 x Jet Skis	2 x Kayaks	2 x Laser Sailboat	2 x Windsurfer	3 x Wakeboards
2 x Water Skis	1 x Snorkeling Equipment	Diving equipment		
1 x Inflatable Trampoline	4 x Towable Toys	3 x Tenders		

For full list of available amenities & toys or price to hire additional equipment please contact us

















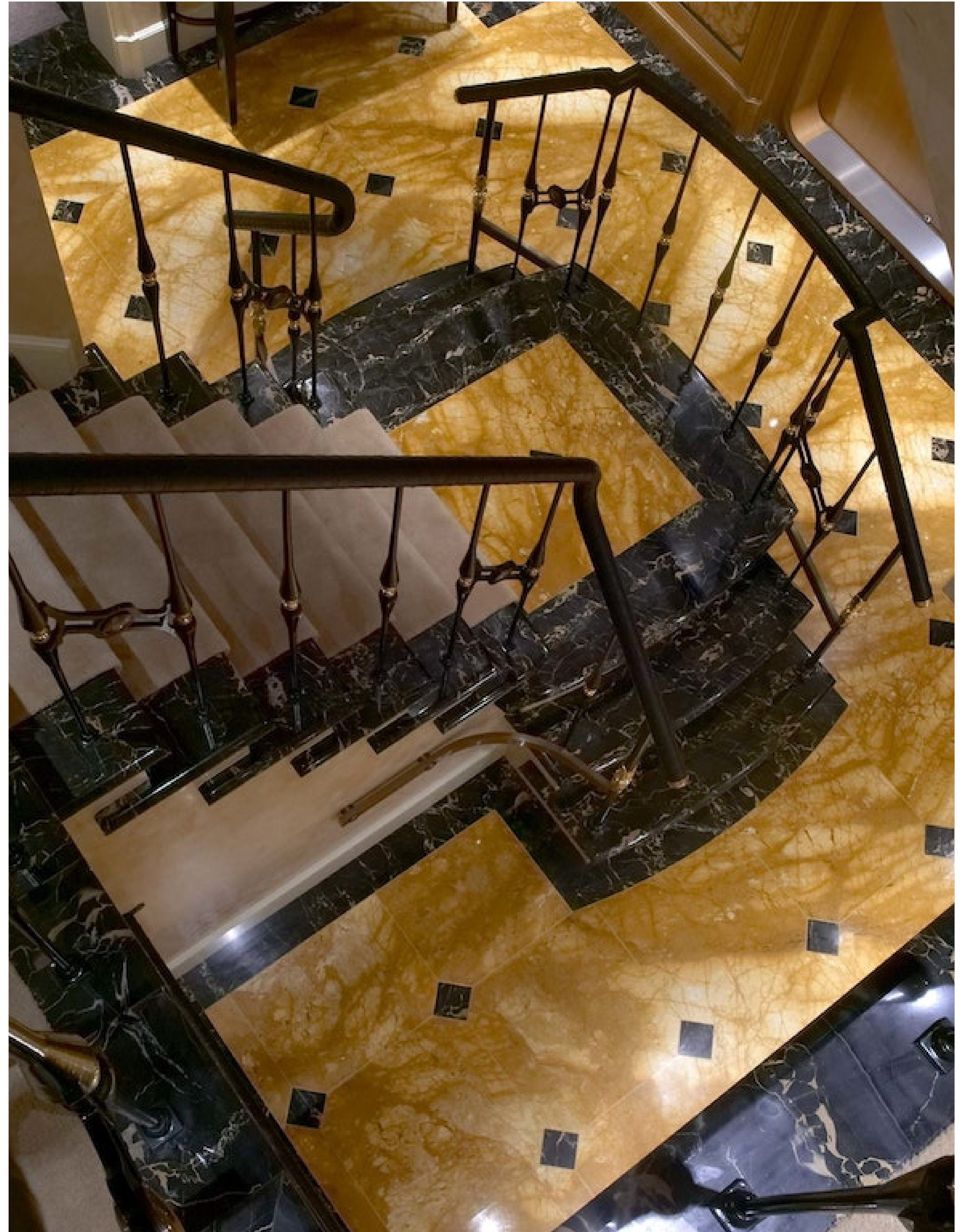
Utopia

OCEANLUX













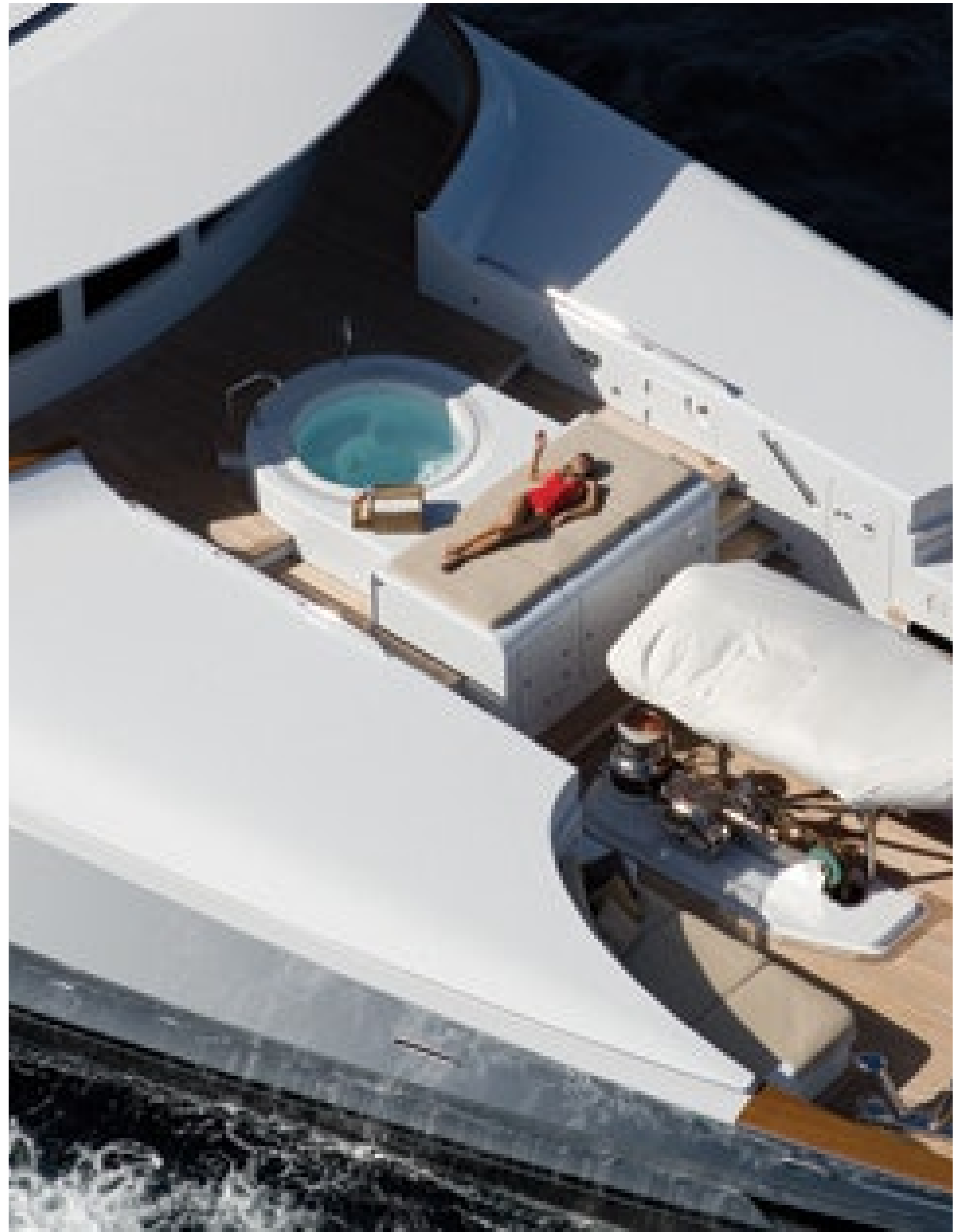
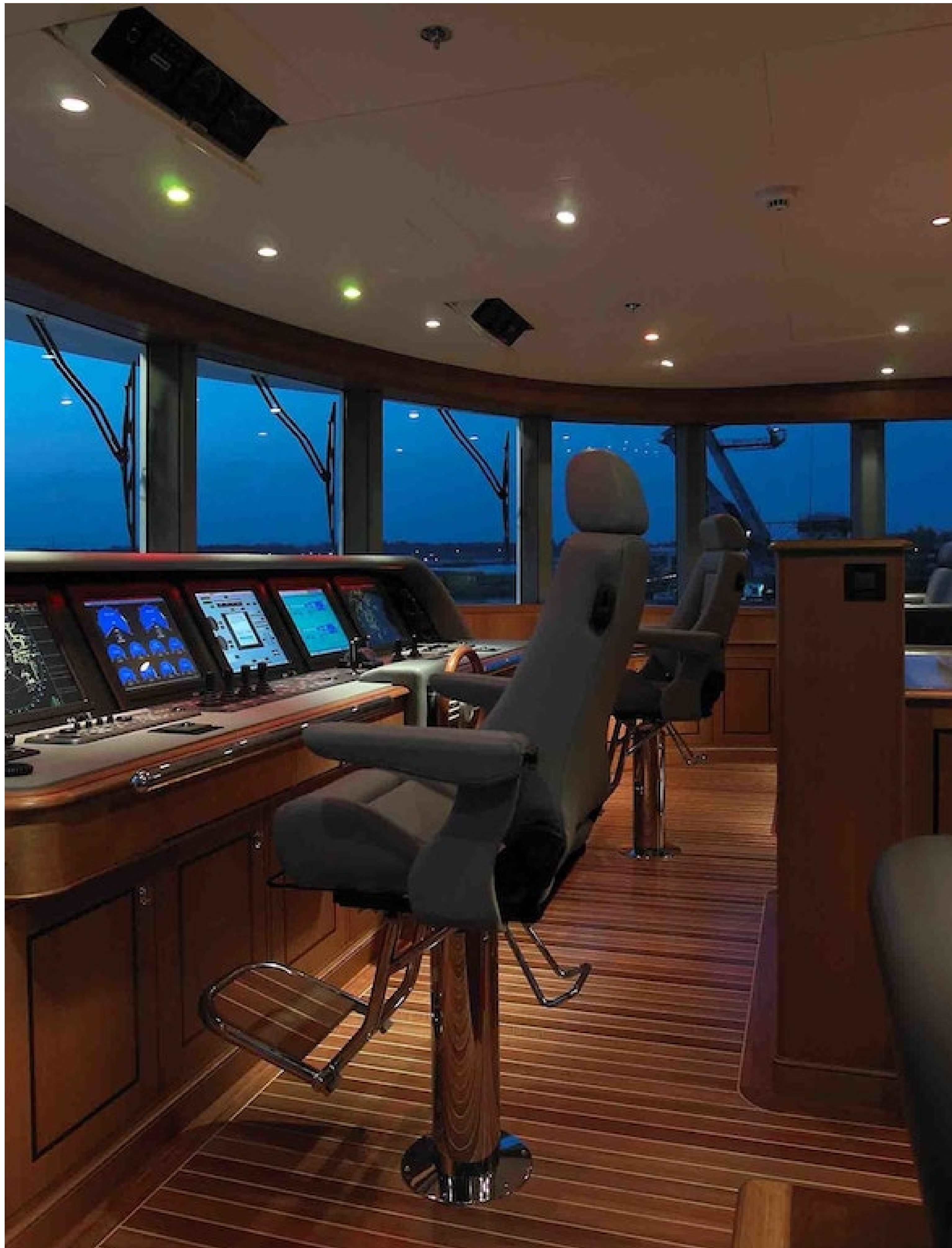












Utopia

OCEANLUX



OCEAN*LUX*

Floating expression of *YOU*

www.oceanluxyachts.com

Fort Lauderdale

+1 954 836 9057

Miami

+1 305 686 7051

New York

+1 332 455 0928

Los Angeles

+1 323 986 5808

London

+44 203 962 116

Sydney

+61 272 541 584

Paris

+33 532 63 01 52

Barcelona

+34 931 768 849

Geneva

+41 225 01 74 96

Athens

+30 211 2347975

Moscow

+7 921 8656779