

OCEAN*LUX*

Borkumriff II



Length: 31.00m / 101.71ft

Guests: 8

Cabins: 4

Crew: 4

FEATURES

- Classic styling with modern amenities.
- Teak, white leather, and stainless steel interiors.
- Cockpit alfresco dining area and large deck awning.
- Charter-friendly layout and water toys for family fun.
- Refitted in 2008/2009 and 2019.
- 31m schooner built by Lubbe Voss Germany in 1982.
- Cruises in East and West Med as well as the Caribbean.
- Marble en-suite facilities in master suite for added luxury.
- Lovely saloon for relaxation and socializing.

CABINS DISTRIBUTION

1 MASTER	1 DOUBLE	2 TWIN
-------------	-------------	-----------

PRICE BY SEASON

Summer
From: \$53,000 /week + expenses

Winter
From: \$53,000 /week + expenses

Borkumriff II

OCEAN*LUX*

SPECIFICATIONS

Length: 31.00m / 101.71ft

Beam: 6.10m / 20.01ft

Draft: 3.00m / 9.84ft

Cruise speed: 8 knots

Max speed: 10 knots

Built: 1982 · 2020 (Refitted)

Builder: Lubbe-Voss

Exterior design: Henk Lunstroo





DESCRIPTION

The Lubbe–Voss shipyard's classic yacht, Borkumriff II (formerly known as Adelita), measures 31m/101'8" and provides versatile accommodation for up to 8 guests across 4 cabins. For an unparalleled sailing experience, Borkumriff II is a must-have on your list. This elegant vessel offers a magnificent blend of luxurious living and breathtaking adventure, allowing you to be guided by nature.

Borkumriff II, built in 1982, provides guest accommodation with 4 suites, comprising a master suite, one double cabin, and two twin cabins, accommodating up to 8 guests. There are a total of 6 beds, including 1 queen, 1 double, and 4 singles. Additionally, it can carry up to 4 crew members onboard, ensuring a relaxed luxury yacht charter experience.

Seamlessly integrated impressive features are available to aid your activities while onboard, such as satellite communications to keep you connected on any voyage. Wi-Fi connectivity ensures you stay connected to the outside world, and the air conditioning provides complete comfort during your charter.

Borkumriff II has a steel hull and teak superstructure and is powered by 1 x John Deere engine, enabling it to cruise comfortably at 8 knots and reach a maximum speed of 10 knots with a range of up to 1,497 nautical miles from its 5,000-liter fuel tanks at cruising speed.

Borkumriff II is equipped with a range of water toys that allow you and your guests to turn the Mediterranean into your private playground. These include waterslides for guests to speed from the sun deck to the water in seconds, towable toys for fun and adventure, waterskis that cater to both beginners and seasoned pros, scuba diving equipment, wakeboards, beach games, inflatable water toys, snorkeling equipment, and a 6.4m/21' Tender for convenient transportation.

Borkumriff II is the ideal platform for you and your guests to enjoy your next luxury yacht charter. Please inquire for details regarding her winter and forthcoming summer cruising grounds and availability.

This luxury classic yacht is in prime condition and awaits your next unforgettable holiday experience.

AMENITIES

- Wifi
- Satcom
- Air Conditioning
- Inflatable Water Slide

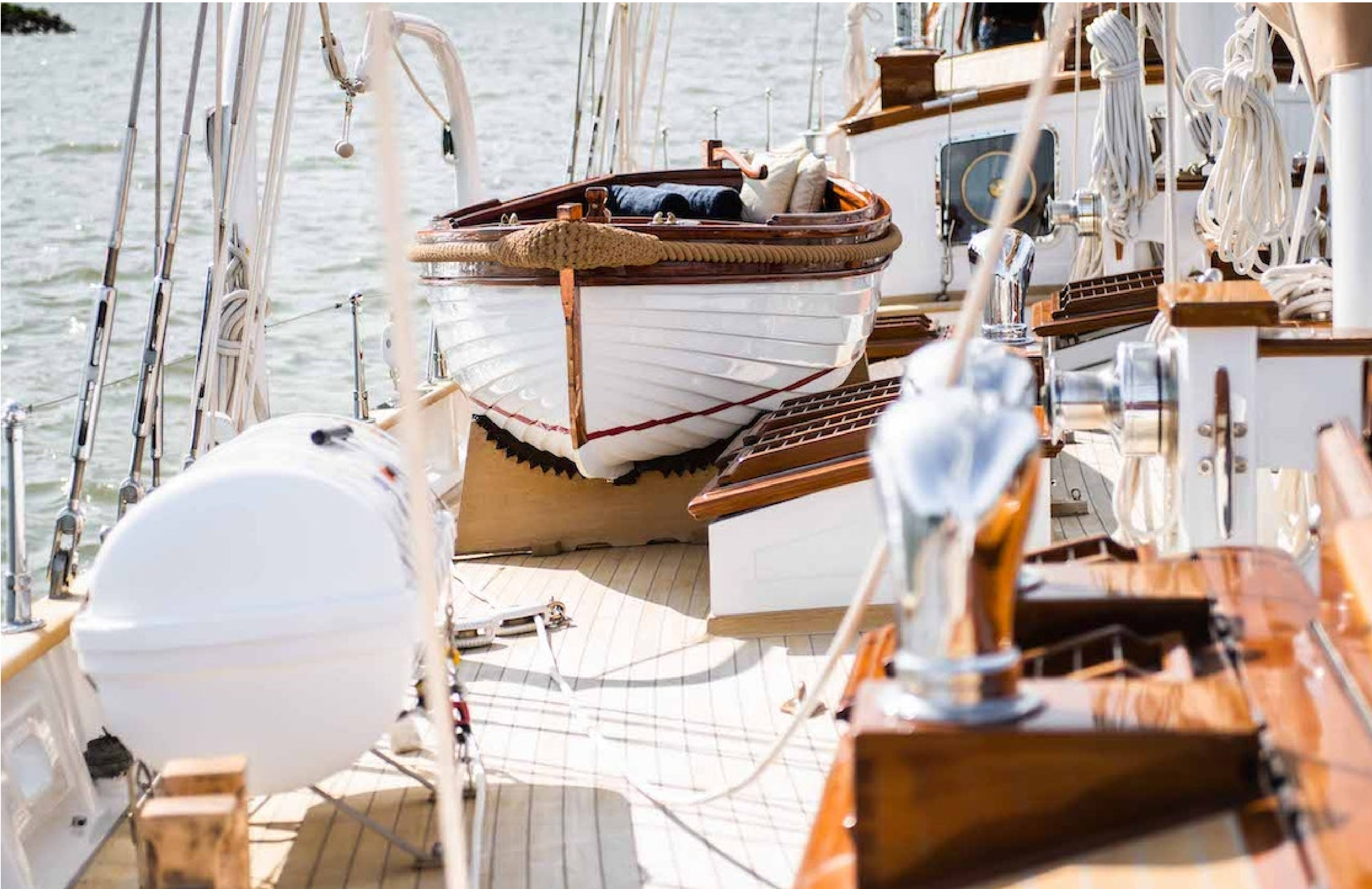
TOYS

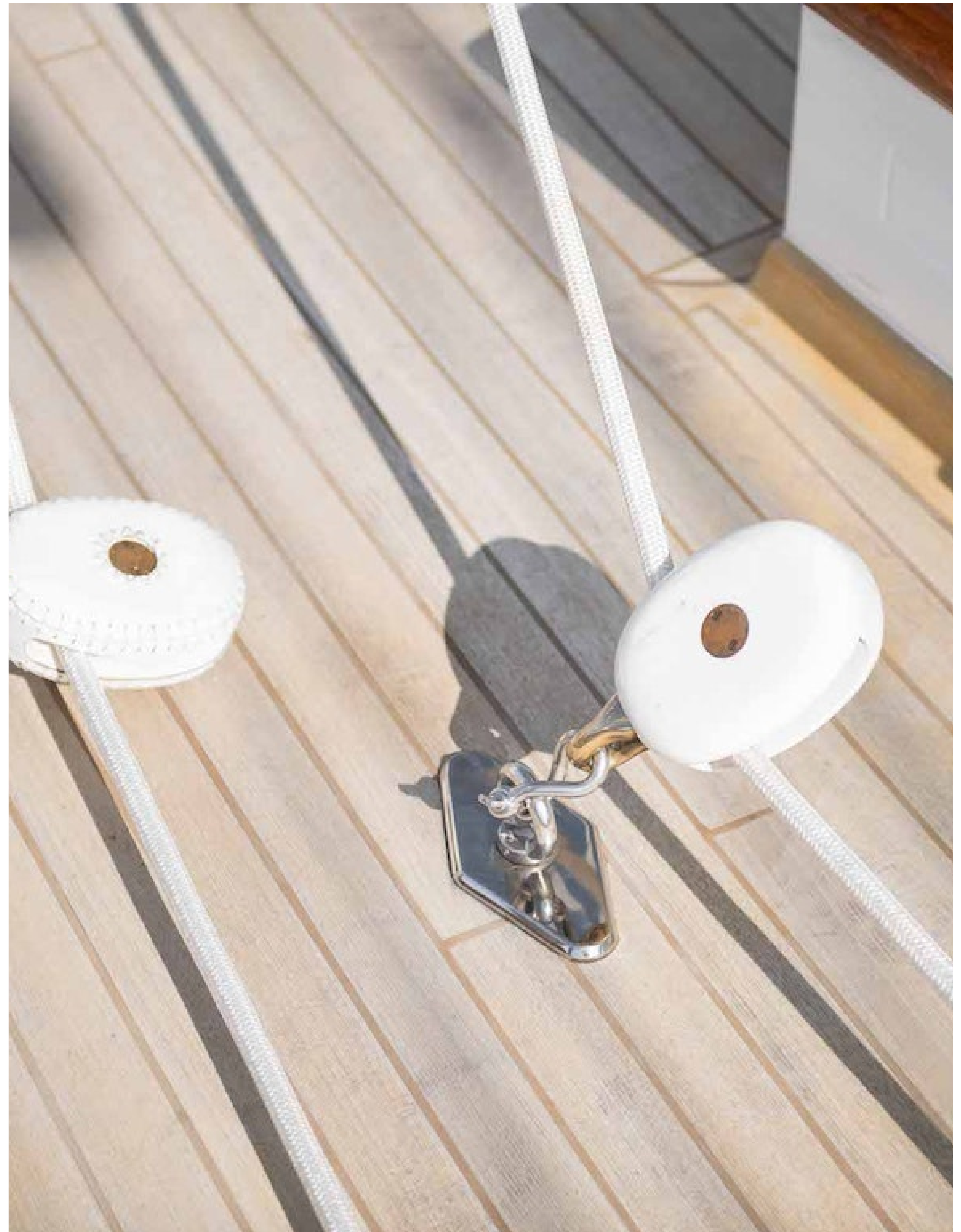
- 1 x Wakeboards
- 1 x Water Ski
- 1 x Towable Toys
- 1 x Inflatable toys
- 1 x Snorkeling Equipment
- 1 x Water slide
- 1 x Diving equipment
- 1 x Beach Games
- 1 x Laser Sailboat
- 1 x Tender

For full list of available amenities & toys or price to hire additional equipment please contact us





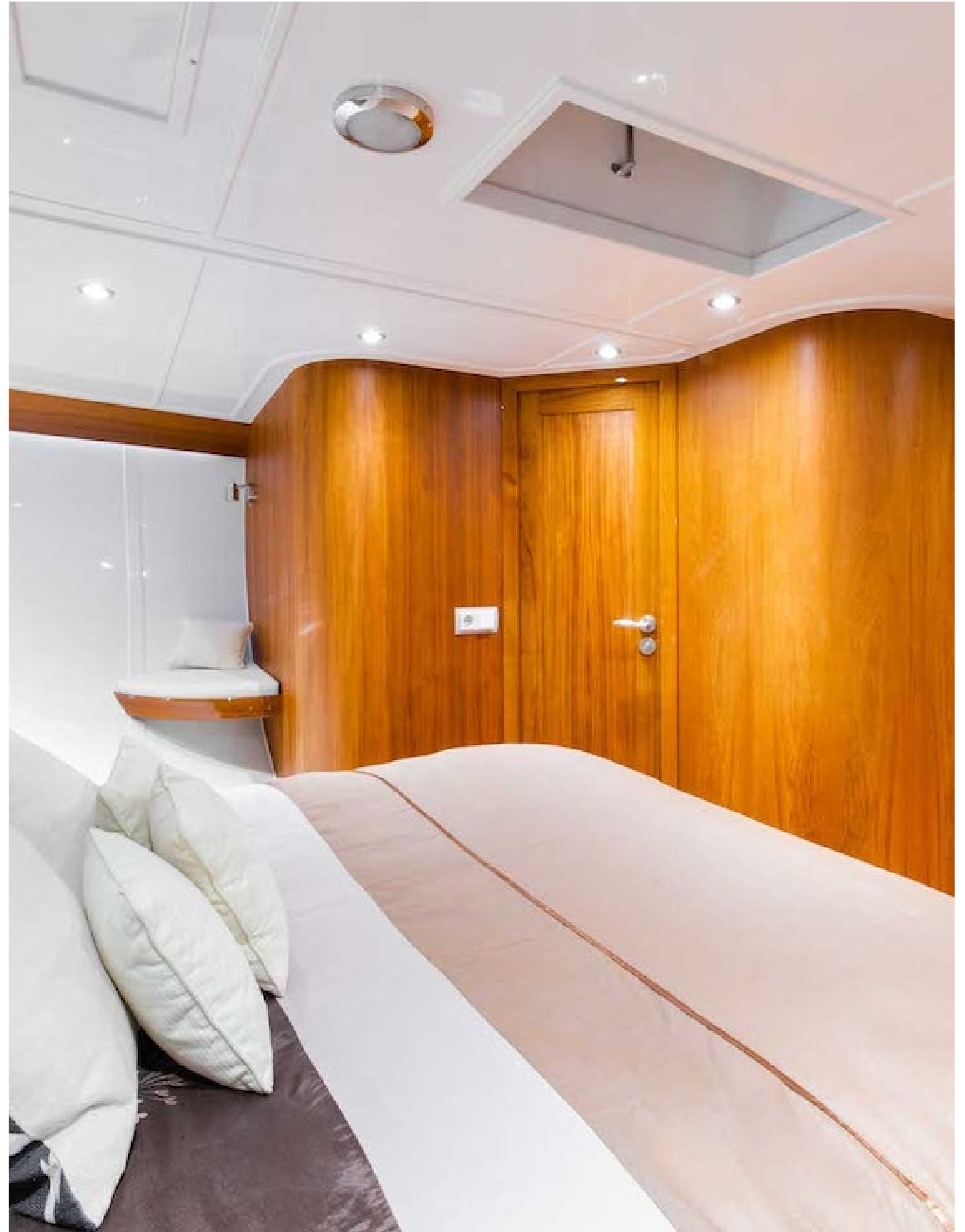


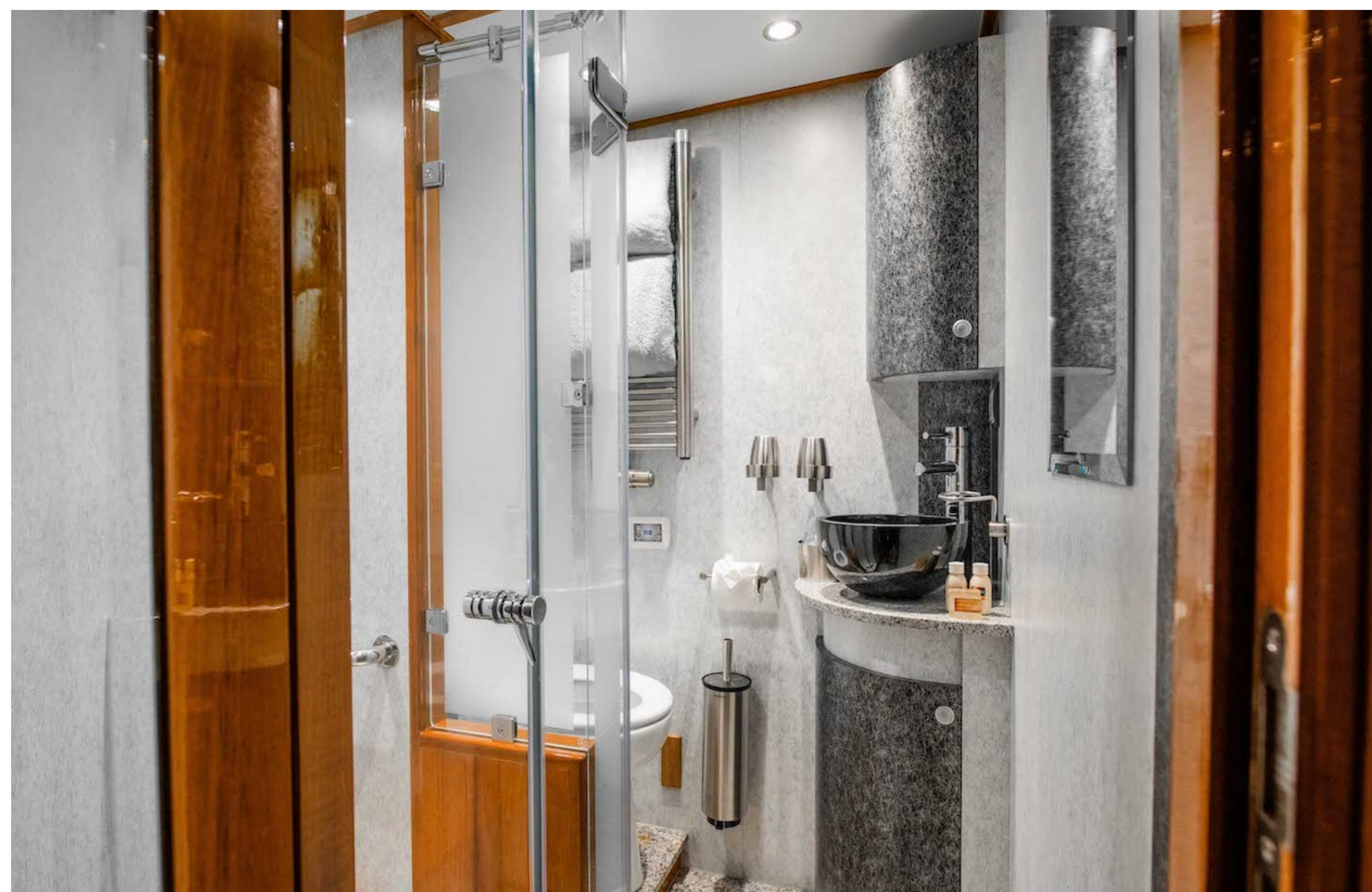














OCEAN*LUX*

Floating expression of *YOU*

www.oceanluxyachts.com

Fort Lauderdale

+1 954 836 9057

Miami

+1 305 686 7051

New York

+1 332 455 0928

Los Angeles

+1 323 986 5808

London

+44 203 962 116

Sydney

+61 272 541 584

Paris

+33 532 63 01 52

Barcelona

+34 931 768 849

Geneva

+41 225 01 74 96

Athens

+30 211 2347975

Moscow

+7 921 8656779