

OCEAN*LUX*

E&E



Length: 42.10m / 138.12ft

Guests: 10

Cabins: 5

Crew: 9

FEATURES

- Bold exterior lines for a striking look.
- Sumptuous interior featuring exotic woods and materials.
- Private sundeck with a Jacuzzi and bar for ultimate relaxation.
- Observation lounge for panoramic views.
- Multiple alfresco dining and lounging options for outdoor enjoyment.
- Four upper deck guest cabins for comfortable accommodations.
- Best Displacement Motoryacht (below 500GT) World Superyacht Awards 2012 winner.
- Zero speed stabilizers to reduce rolling motion at anchor.
- Exclusive Jacuzzi sun deck for soaking up the sun.
- Guest cabins with direct access to exterior decks for convenience.
- Convenient hydraulic swim stairs descending into the water for easy access to water activities.

CABINS DISTRIBUTION

1 MASTER	2 VIP	2 DOUBLE
-------------	----------	-------------

PRICE BY SEASON

Summer
From: \$140,000 /week + expenses

Winter
From: \$140,000 /week + expenses

SPECIFICATIONS

Length: 42.10m / 138.12ft

Beam: 9.15m / 30.02ft

Draft: 2.70m / 8.86ft

Cruise speed: 11 knots

Built: 2011

Builder: Cizgi Yat

Exterior design: Vripack

Interior design: Art Line





DESCRIPTION

The shipyard Cizgi Yat's expedition yacht 'E&E' is a multi-award-winning vessel that spans 42.1m/138'1". It offers flexible accommodation for up to 10 guests in 5 cabins and boasts an interior design by Art Line.

This yacht is a perfect launchpad for adventure and can cater to practically any expedition worldwide.

Built in 2011, E&E has 5 suites that can accommodate up to 10 guests. The guest cabins include a master suite, two VIP cabins, and two double cabins. There are a total of 7 beds, including 4 single beds. It can also carry up to 9 crew members to ensure a luxurious and comfortable yacht charter experience.

E&E offers various amenities to keep you comfortable and entertained throughout your stay. It has a deck jacuzzi that is perfect for enjoying the scenery with your favorite drink in hand. It also has Wi-Fi connectivity to keep you connected at all times. Guests can experience complete comfort with the yacht's air conditioning.

The yacht has a steel hull and aluminum superstructure and is powered by twin Caterpillar engines. It can comfortably cruise at 11 knots and reach a maximum speed of 14 knots. The yacht has a range of up to 4,500 nautical miles from its 70,826-liter fuel tanks at cruising speed. The advanced stabilization system on board reduces the side-to-side roll of the yacht and ensures exceptional comfort levels at anchor or when underway.

E&E features a range of toys and accessories to keep you and your guests entertained on the water throughout your stay. You can enjoy zipping over the water on one of the SeaDoo Spark 115hp WaveRunners or have fun with waterskis or wakeboards. In addition, there are kayaks, inflatable water toys, and paddleboards. E & E has two tenders, including a 5.4m/17'9" Castoldi Jet Tender to transport you in style.

E&E provides an ideal platform for you and your guests to enjoy your next luxury yacht charter. Please inquire about her winter and forthcoming summer cruising grounds and availability.

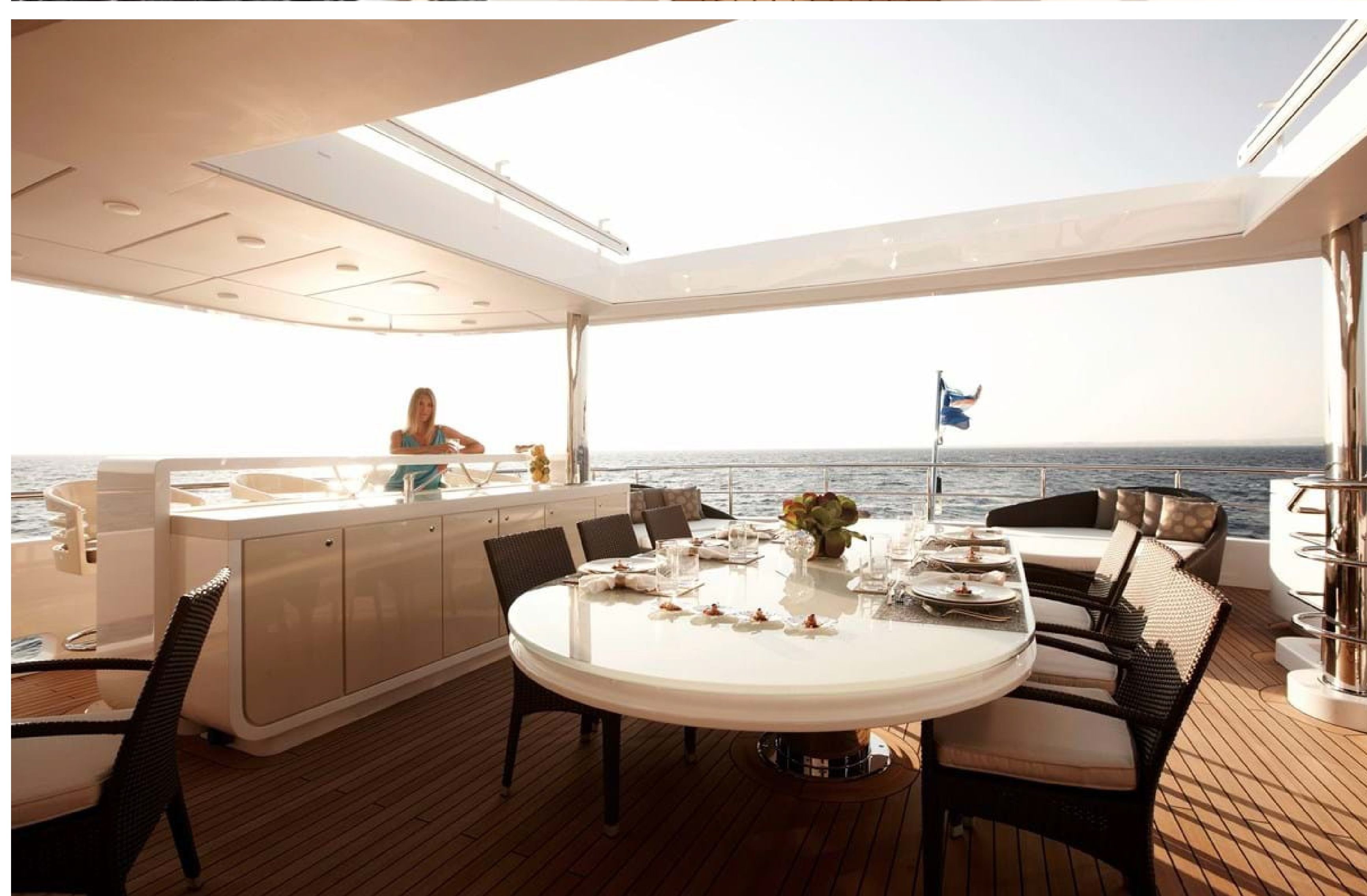
AMENITIES

- Jacuzzi
- Stabilizers Underway
- Wifi
- At-Anchor Stabilizers
- Deck Jacuzzi
- Air Conditioning

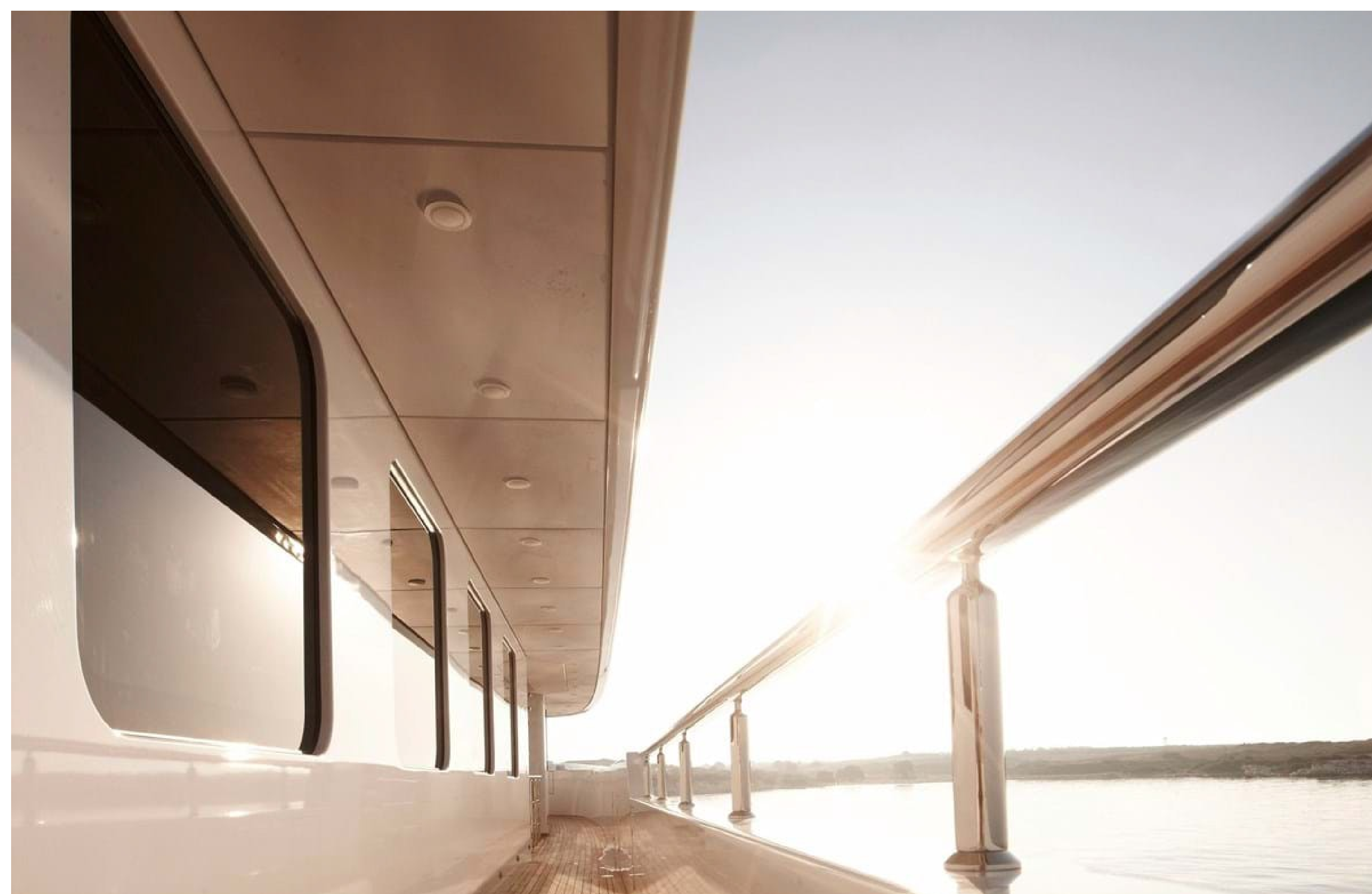
TOYS

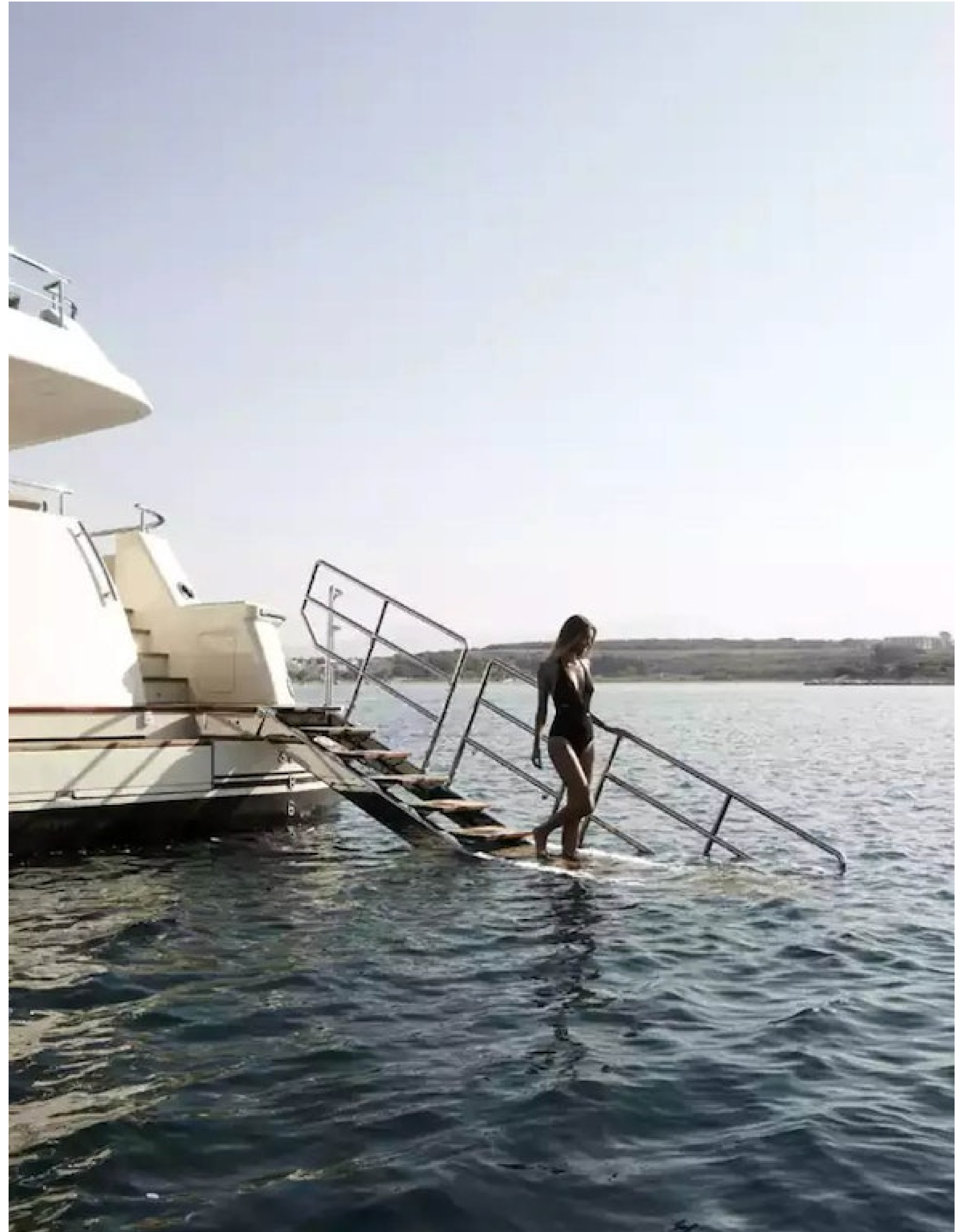
- Wakeboard
- Jet Skis
- Kayaks
- Towable Toys
- Water Ski
- Paddleboard
- Inflatable toys
- 2 x Tenders

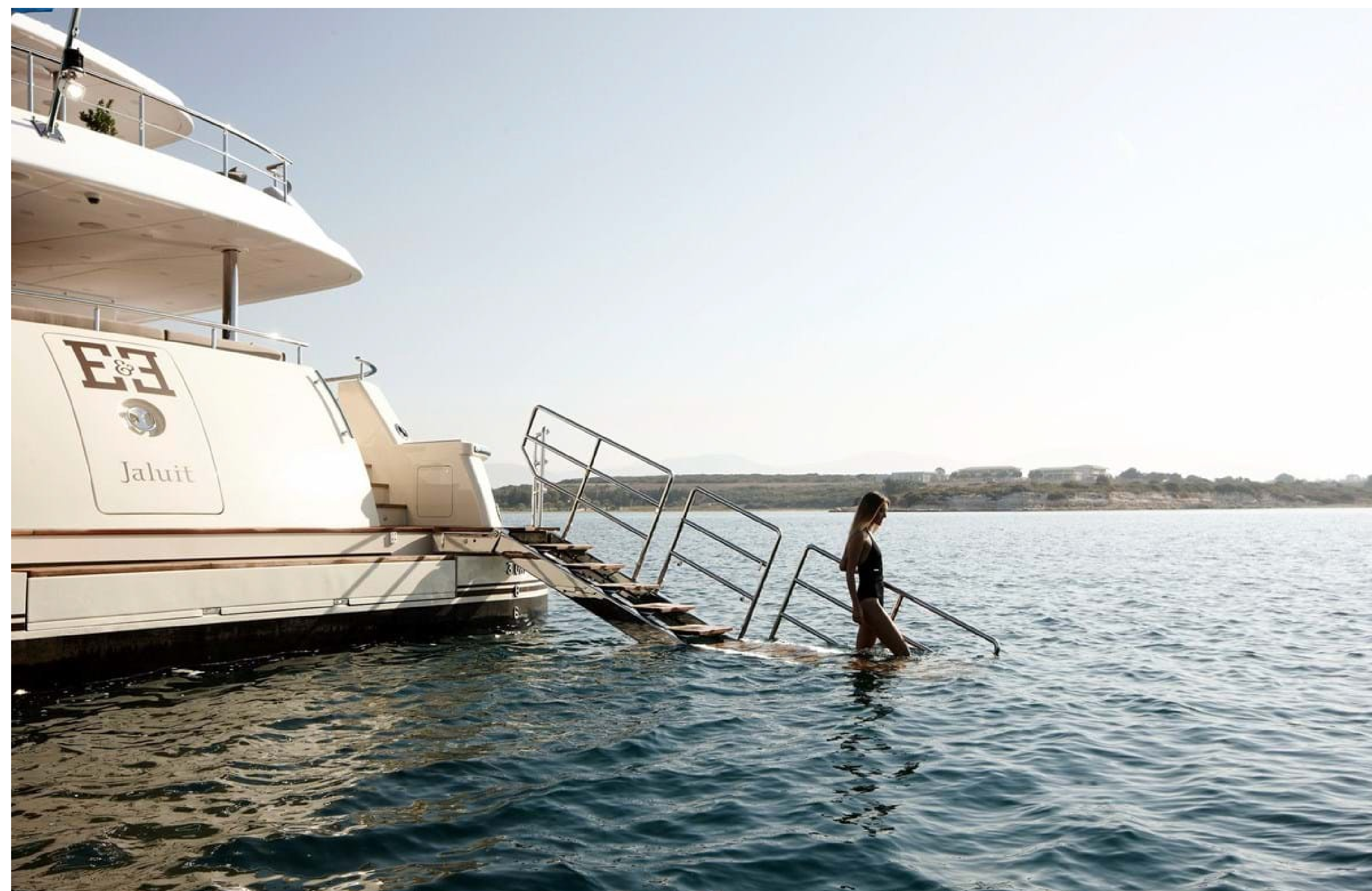
For full list of available amenities & toys or price to hire additional equipment please [contact us](#)



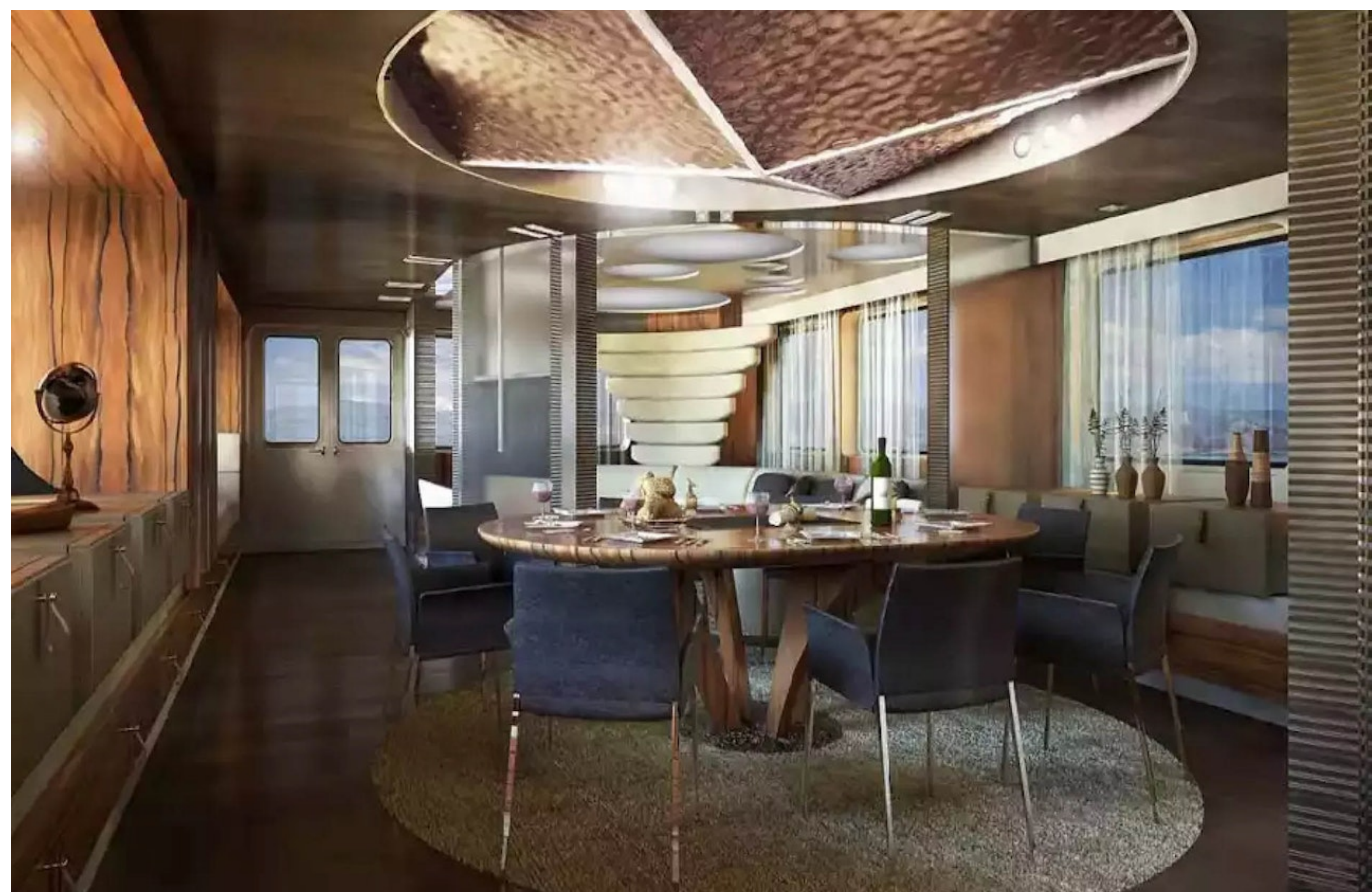


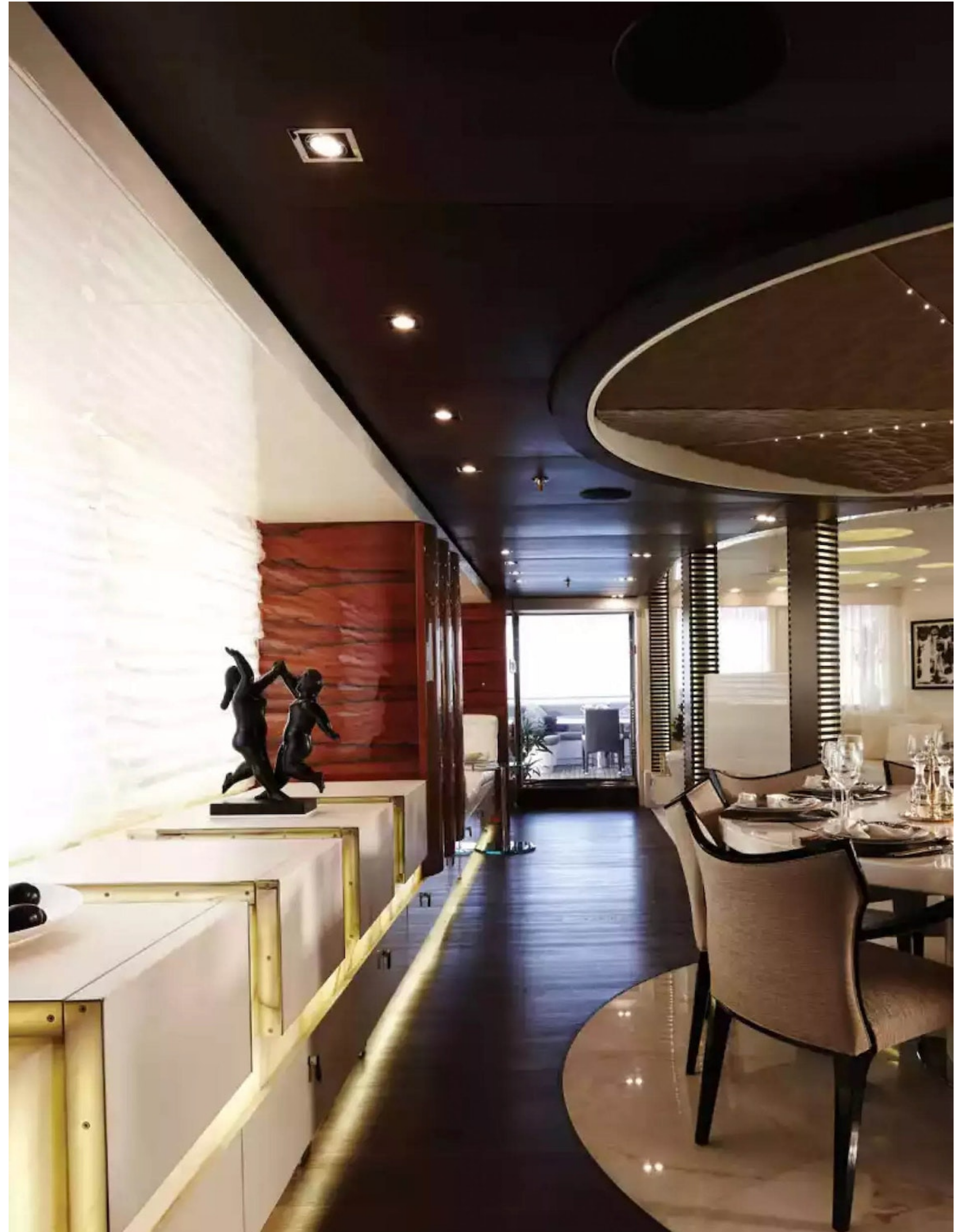


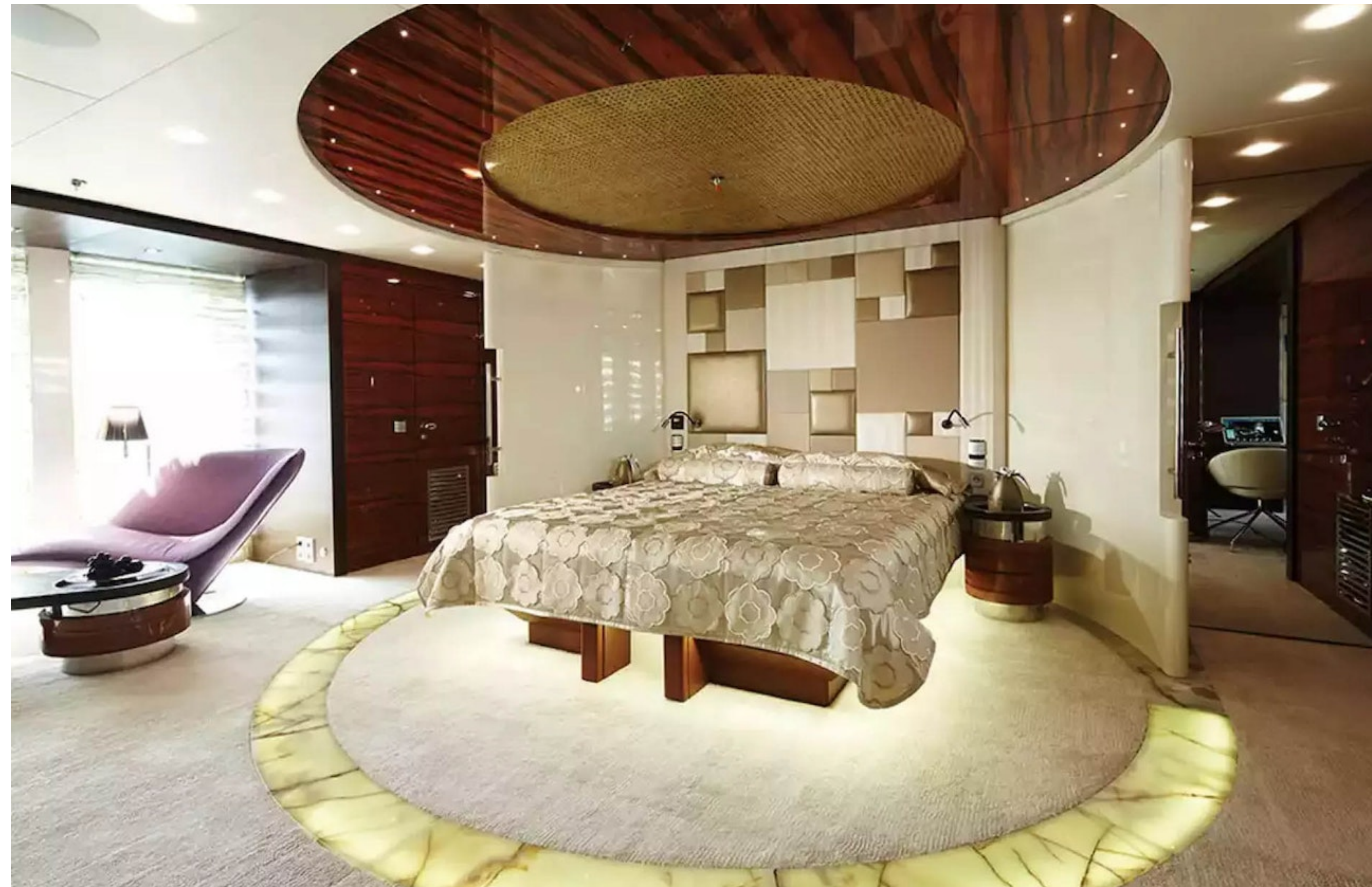
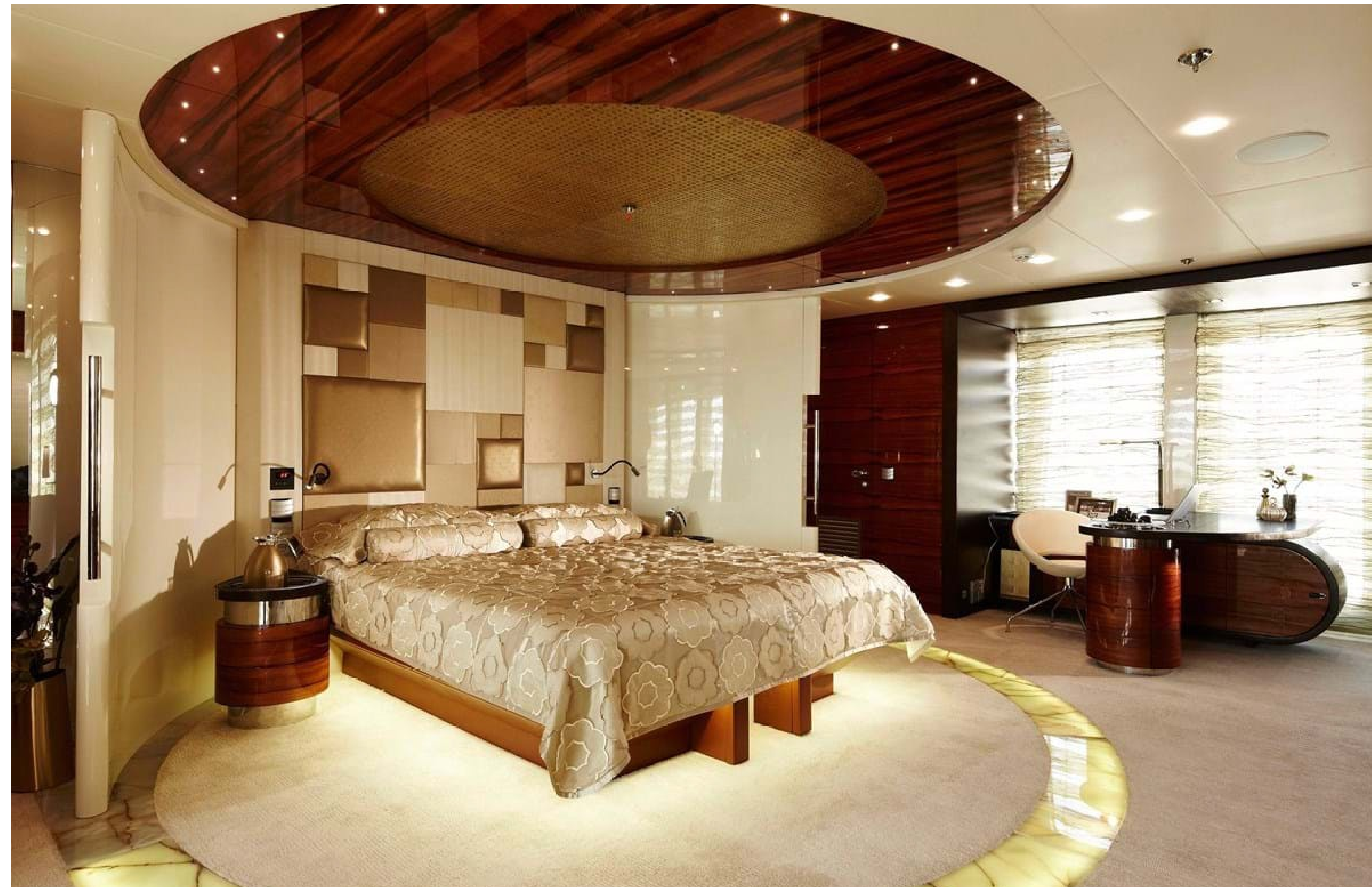




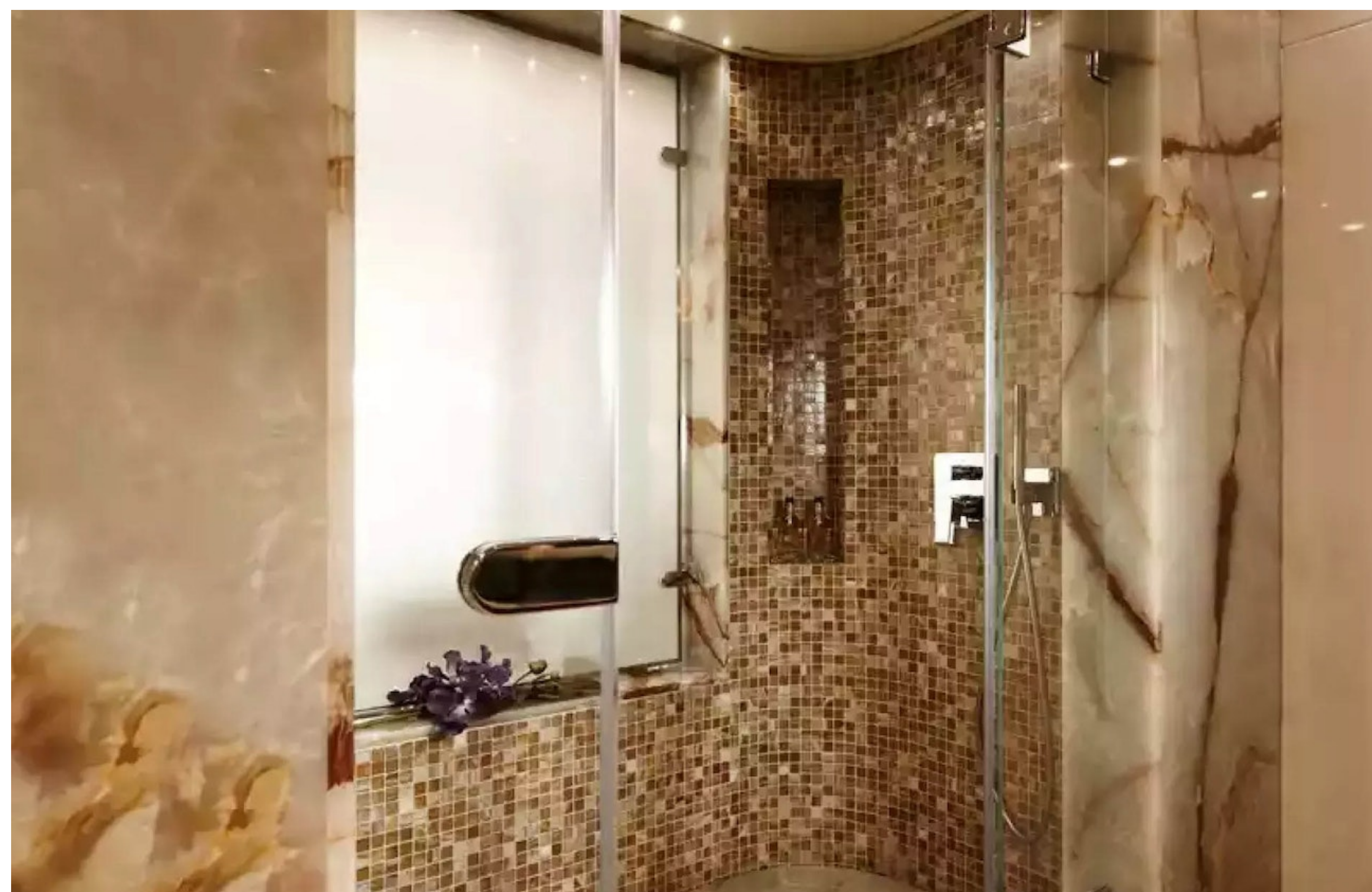
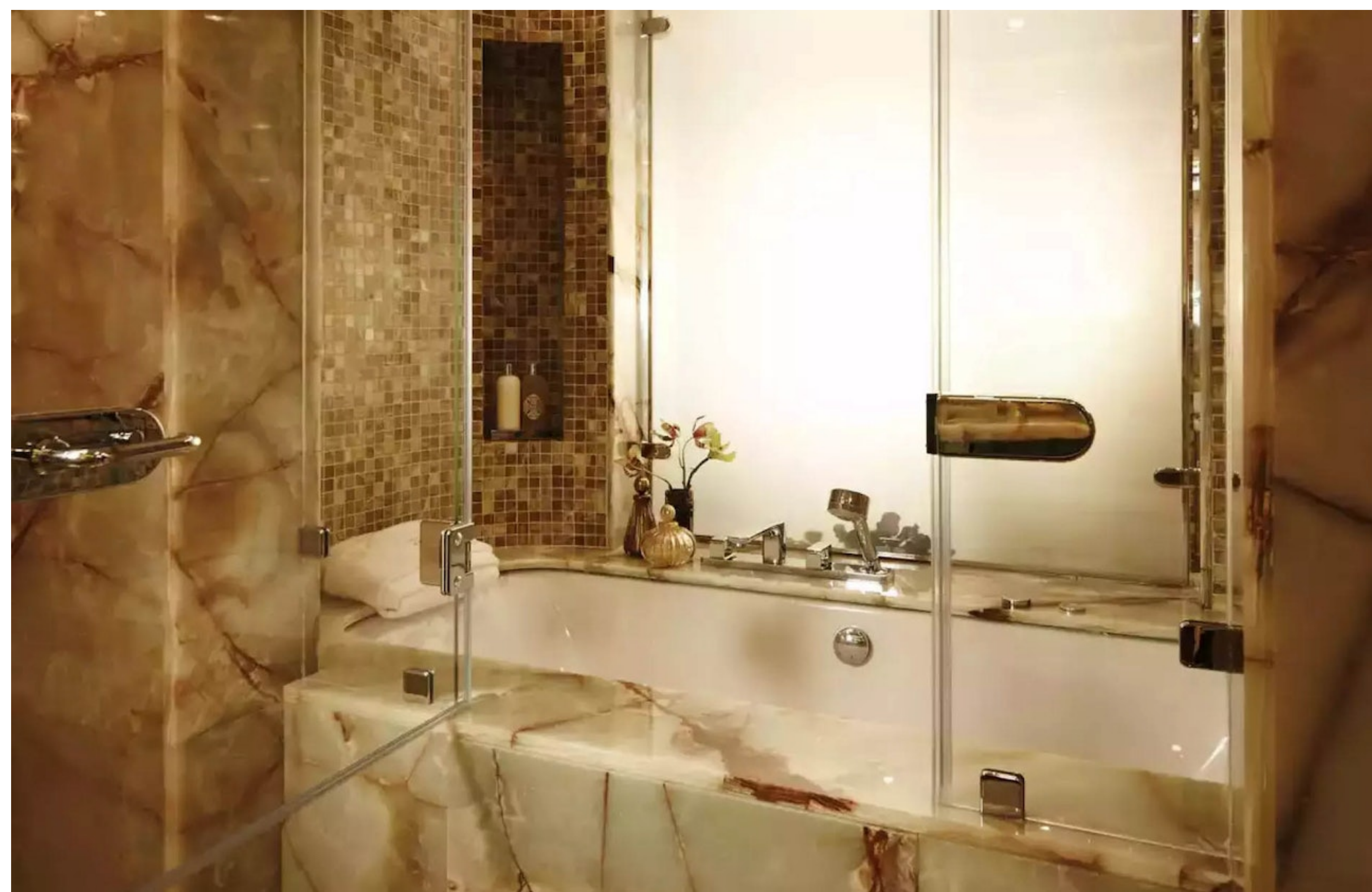
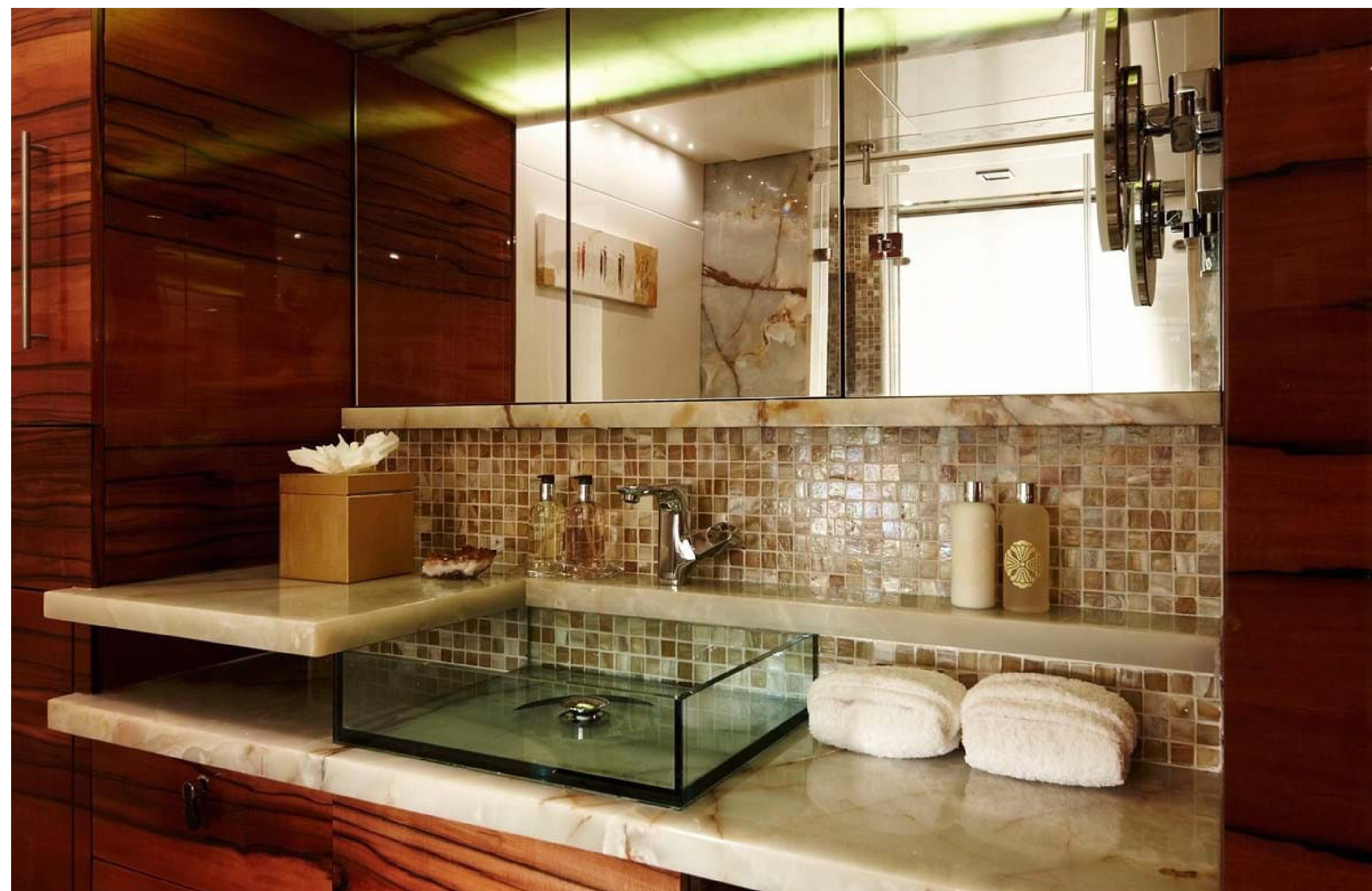


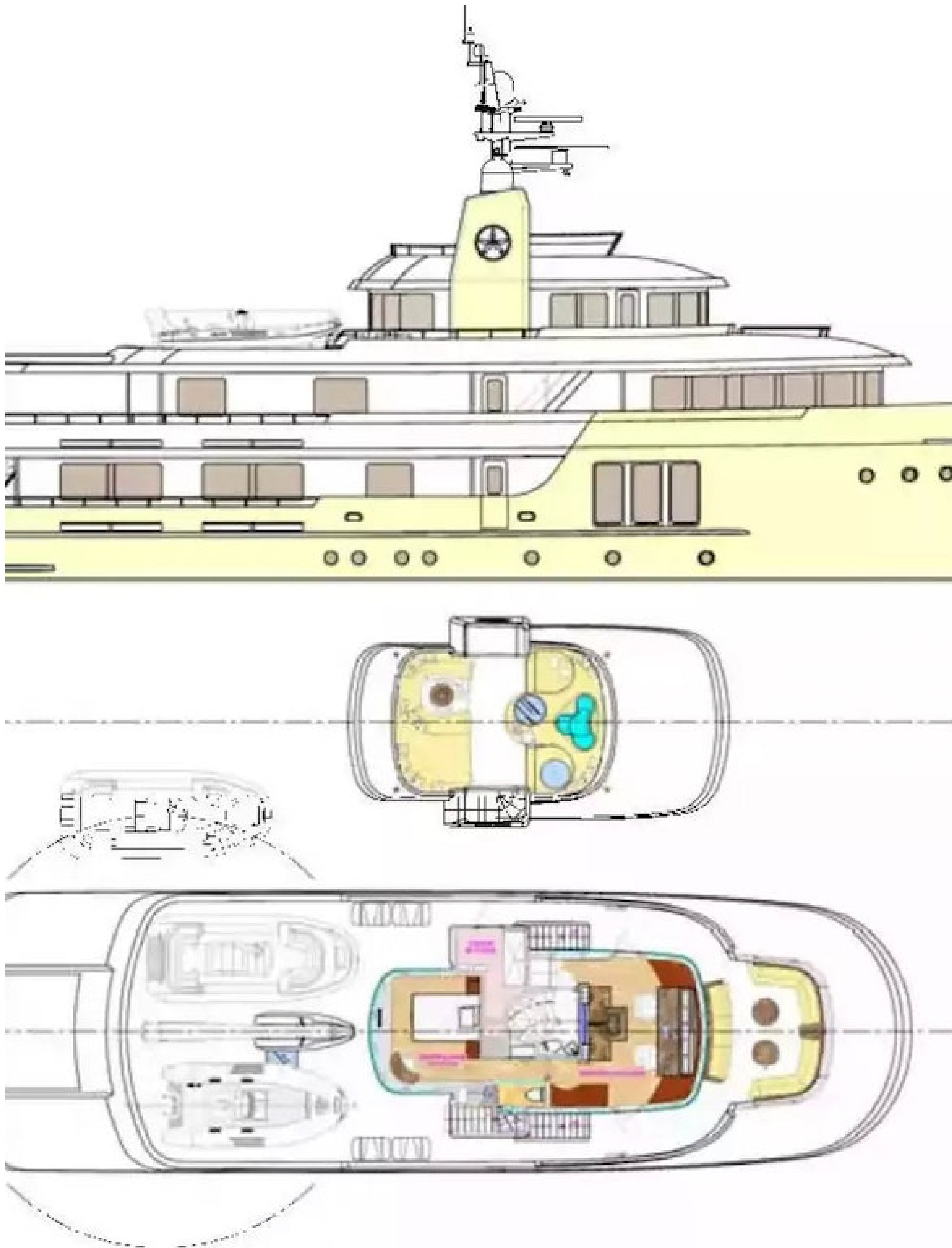












OCEAN*LUX*

Floating expression of *YOU*

www.oceanluxyachts.com

Fort Lauderdale

+1 954 836 9057

Miami

+1 305 686 7051

New York

+1 332 455 0928

Los Angeles

+1 323 986 5808

London

+44 203 962 116

Sydney

+61 272 541 584

Paris

+33 532 63 01 52

Barcelona

+34 931 768 849

Geneva

+41 225 01 74 96

Athens

+30 211 2347975

Moscow

+7 921 8656779