

OCEAN*LUX*

Silver Dream



Length: 43.80m / 143.70ft

Guests: 10

Cabins: 5

Crew: 9

FEATURES

- Impressive 2,400nm range.
- RYA water sports center on board.
- Sleeps 10 guests comfortably.
- 5.49m/18' Castoldi Jet Tender for easy reef exploration.
- Shallow draft and fast speeds for reef exploration.
- Sky lounge features a projector screen for on board cinema experience.
- On board gym for fitness enthusiasts.
- Masseur and spa therapist on board for ultimate relaxation.
- Swim platform/watersports area with a wide selection of water toys.
- Sun deck jacuzzi for soaking up the sun.
- Round table al fresco dining on main deck aft.
- Sun deck cinema setup for movie nights under the stars.

CABINS DISTRIBUTION

1 MASTER	2 DOUBLE	2 TWIN
-------------	-------------	-----------

PRICE BY SEASON

Summer
From: \$161,000 /week + expenses

Winter
From: \$156,000 /week + expenses

Silver Dream

OCEAN*LUX*

SPECIFICATIONS

Length: 43.80m / 143.70ft

Beam: 8.50m / 27.89ft

Draft: 2.10m / 6.89ft

Cruise speed: 12 knots

Built: 2001

Builder: Warren Yachts

Exterior design: Dubois

Interior design: Thomas Hamel, Sam Sorgiovanni





DESCRIPTION

The Warren Yachts–built motor yacht "Silver Dream" is 44m/144'4" long and provides flexible accommodation for up to 10 guests in 5 cabins, which have been styled by Thomas Hamel. This luxury yacht is perfect for families or friends, offering various spaces for relaxation and entertainment, including an array of water toys.

Guests can enjoy the master suite, two double cabins, and two twin cabins, which provide a total of 7 beds (1 king, 2 doubles, and 4 singles). The yacht can also accommodate up to 9 crew members to ensure a relaxed and comfortable experience.

Silver Dream is equipped with amenities such as a gym and a deck jacuzzi, and provides Wi-Fi connectivity and air conditioning for the ultimate comfort. The yacht's GRP hull and superstructure, along with a semi-displacement hull, ensure exceptional seakeeping and impressive speeds. It is powered by twin Caterpillar engines and can cruise comfortably at 12 knots, reaching a maximum speed of 16 knots with a range of up to 2,400 nautical miles.

The yacht's selection of water toys and accessories includes a Seadoo XP 130hp WaveRunner, towable toys, waterskis, scuba diving equipment, fishing equipment, and snorkelling equipment. Silver Dream also features two tenders, including a 5.49m/18' Castoldi Jet Tender.

Silver Dream is available for luxury yacht charters throughout the year in the Mediterranean, offering unforgettable experiences in some of the most magical places with the finest food. This unique motor yacht offers world-class onboard amenities and an overflowing toy box full of the latest water sports gear.

AMENITIES

- Jacuzzi
- Stabilizers Underway
- Wifi
- Deck Jacuzzi
- Gym
- Air Conditioning

TOYS

- 2 x Jet Skis
- Water Skis
- Towable Toys
- Fishing Equipment
- Snorkeling Equipment
- 2 x Tenders

For full list of available amenities & toys or price to hire additional equipment please contact us



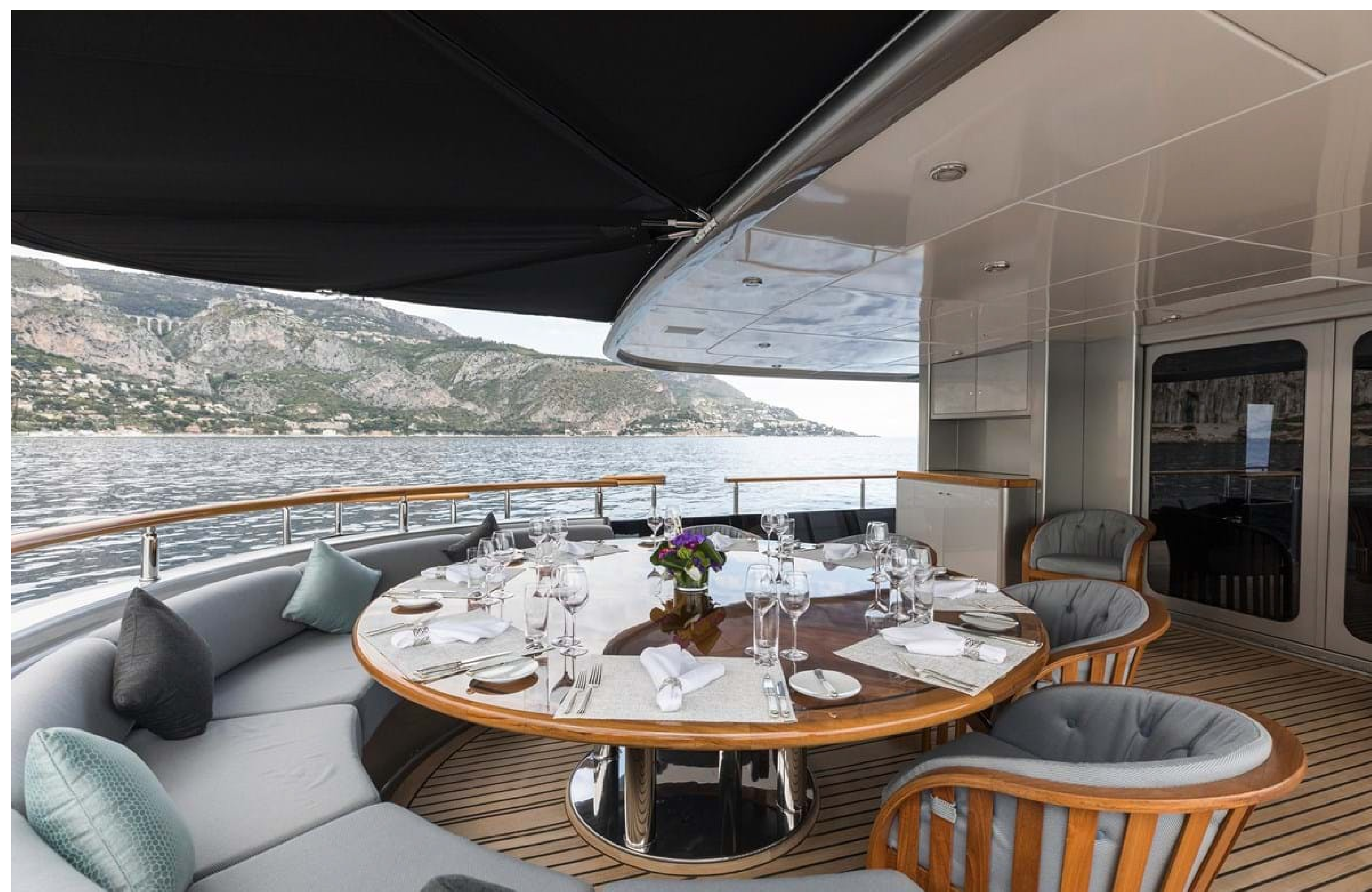
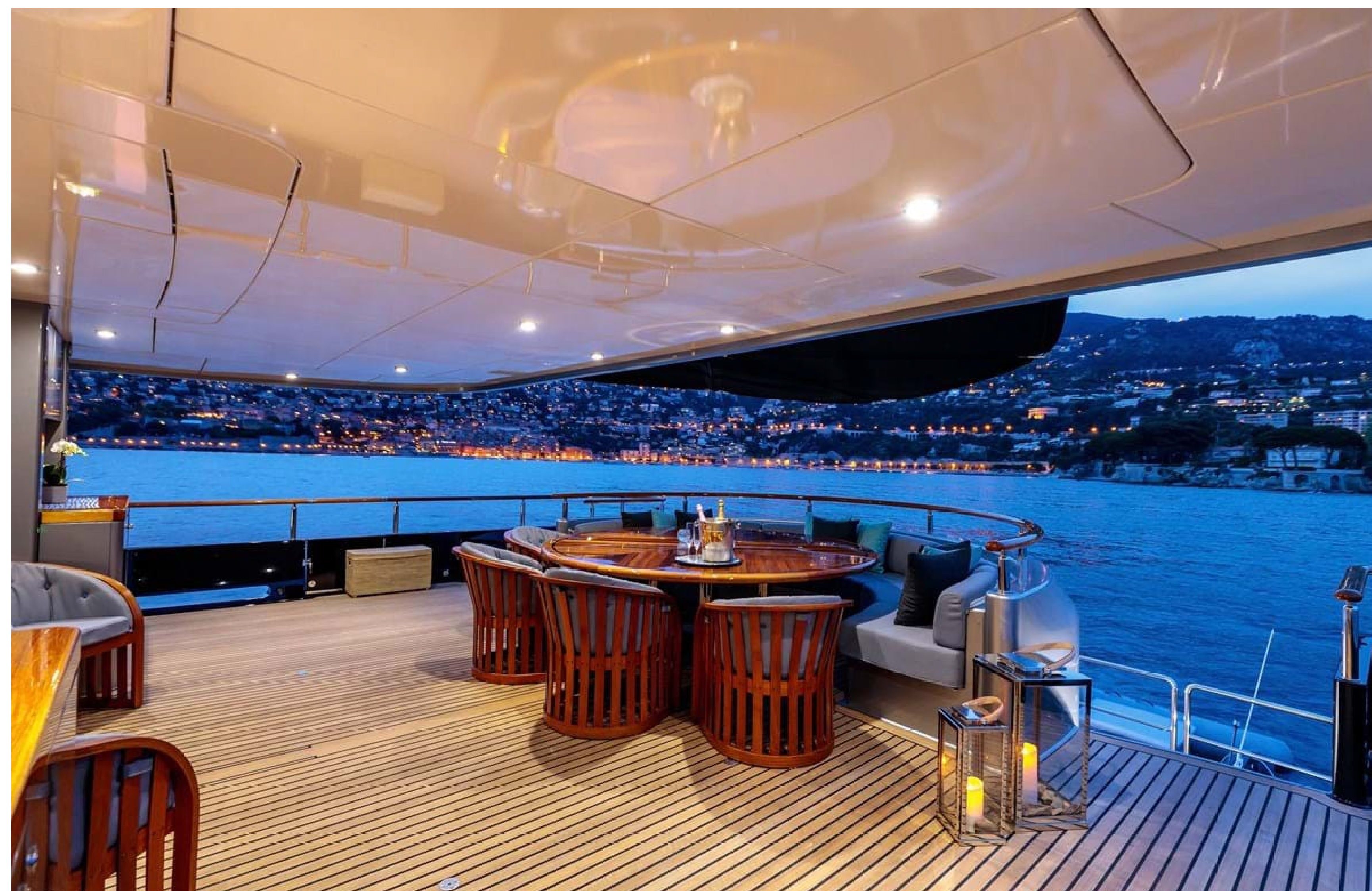




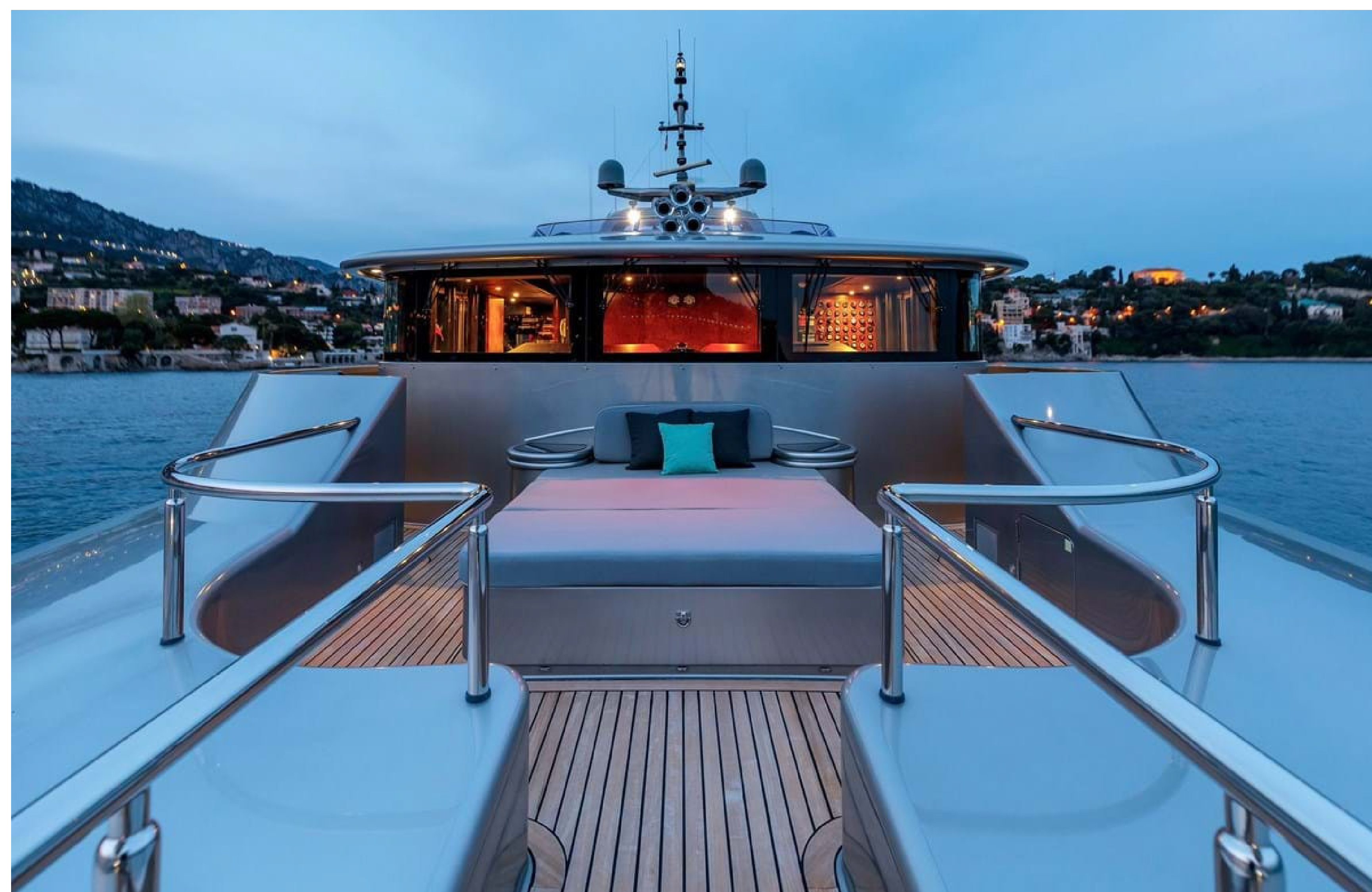
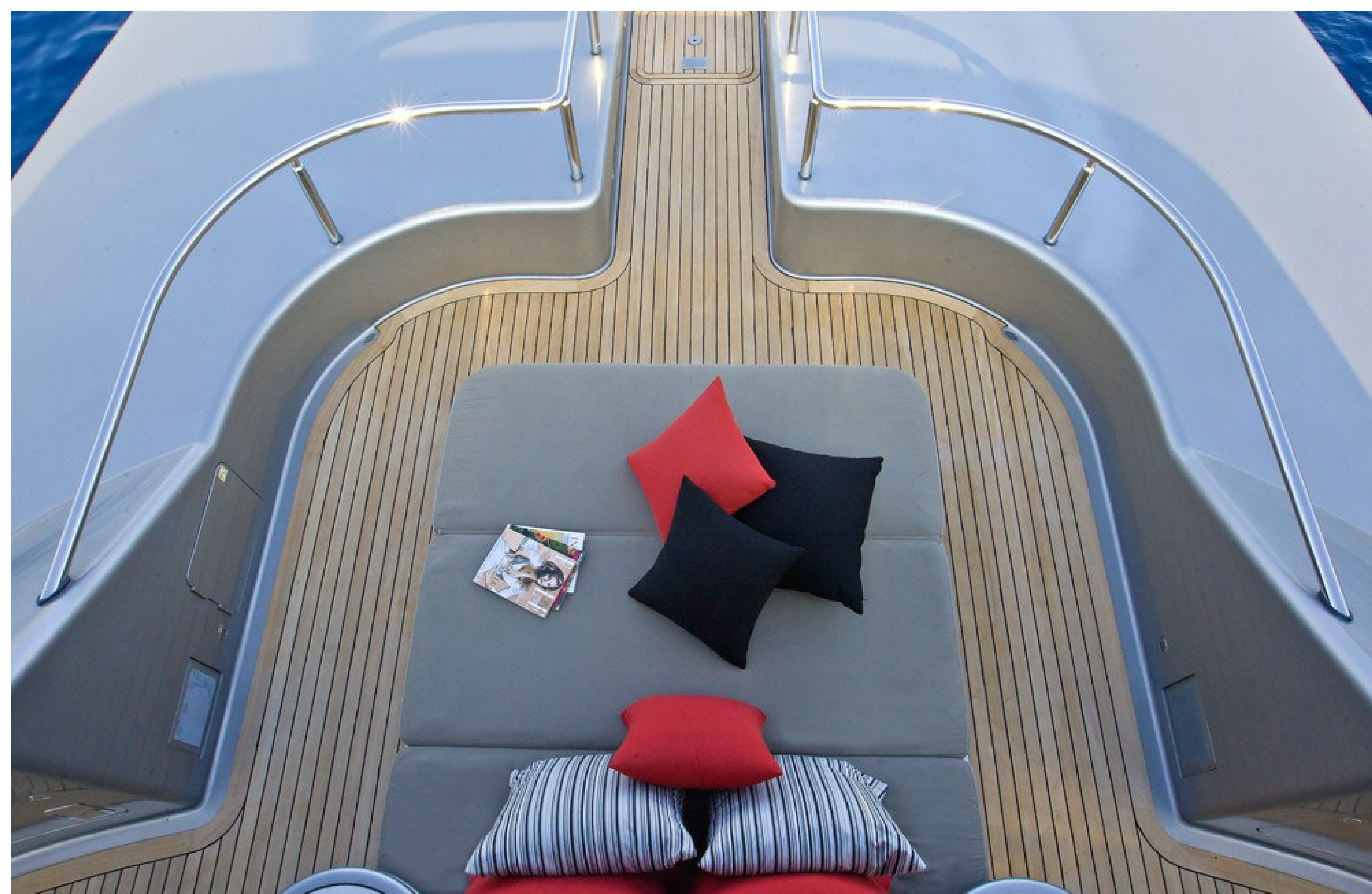
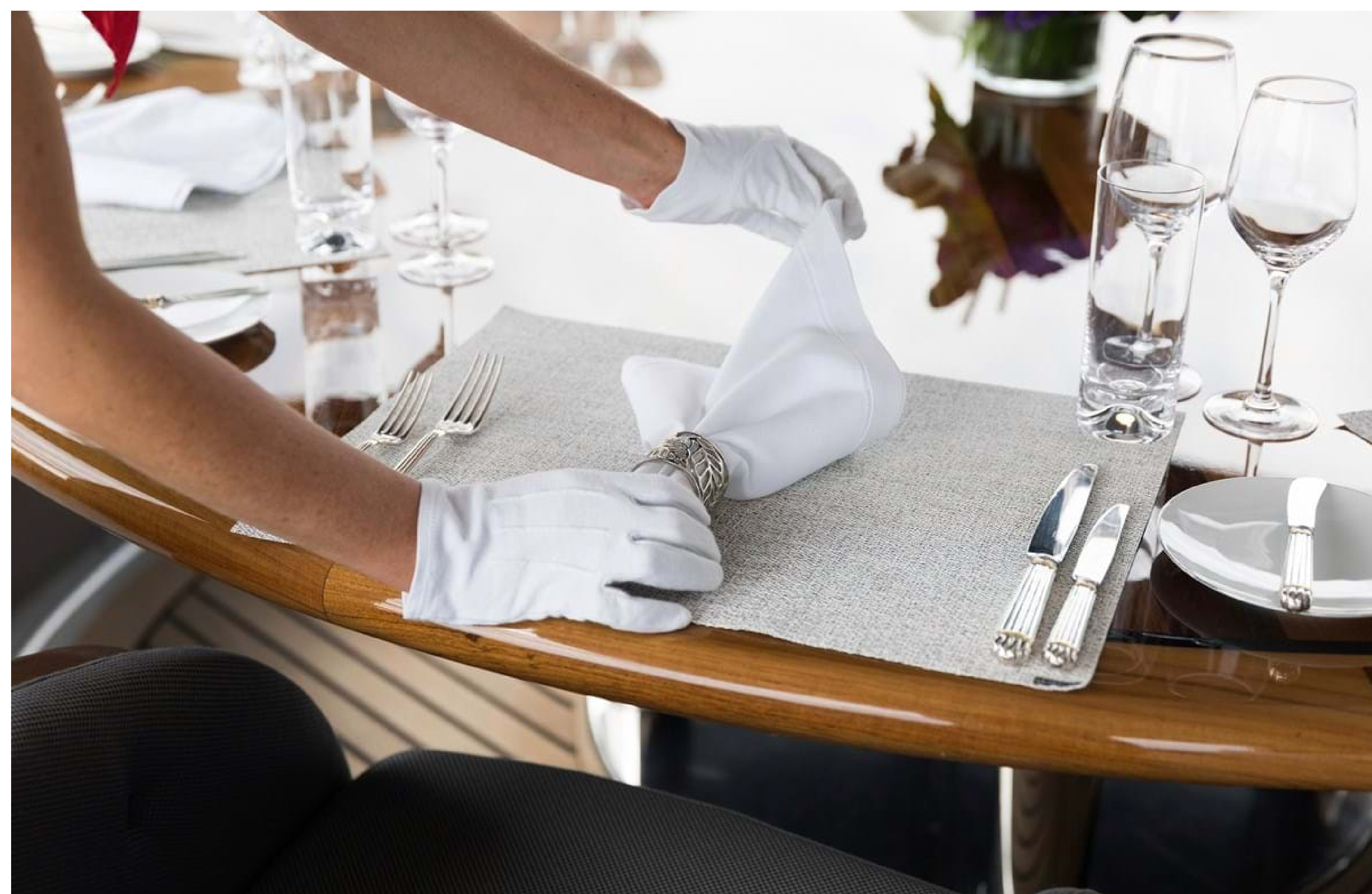














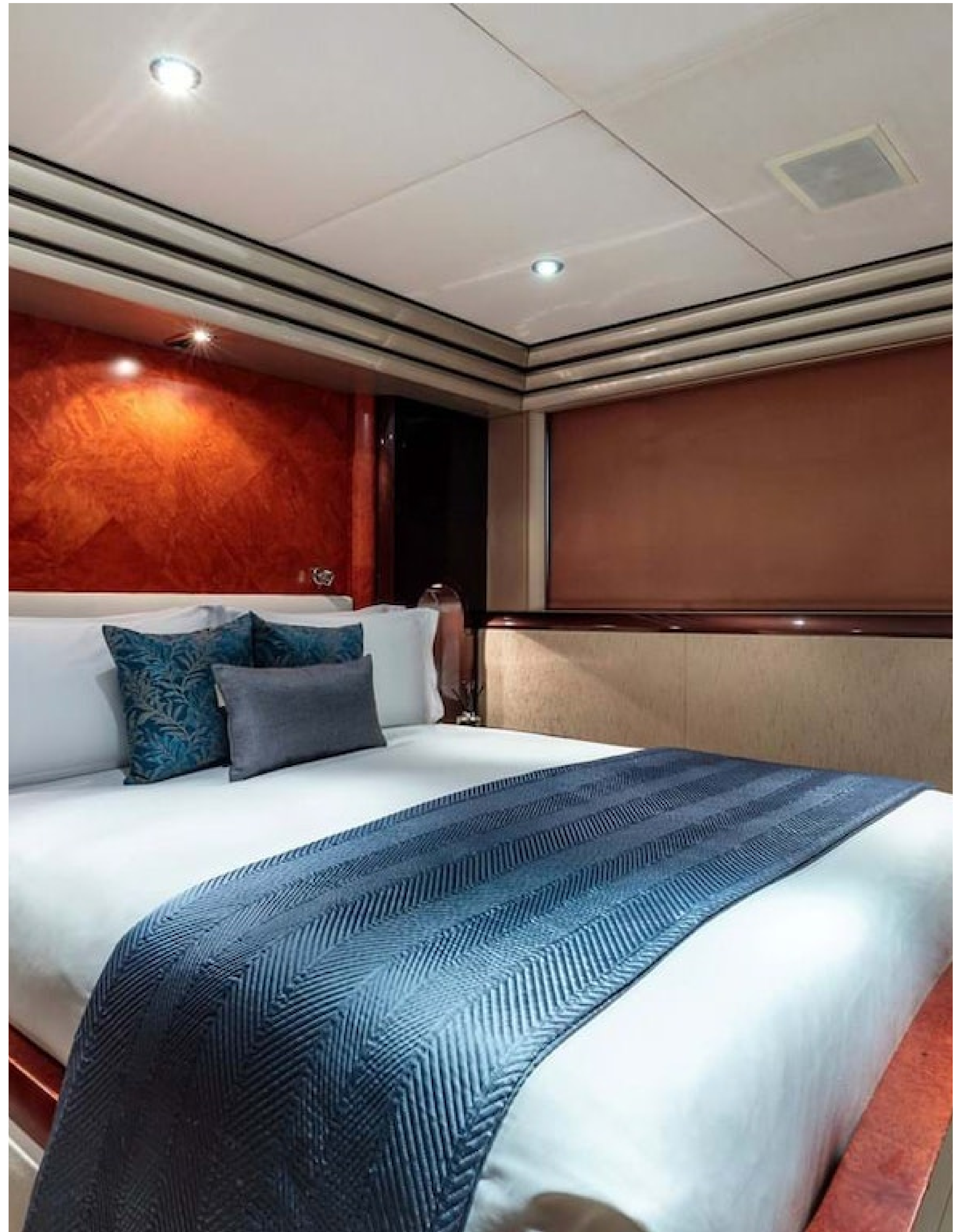






















OCEAN*LUX*

Floating expression of *YOU*

www.oceanluxyachts.com

Fort Lauderdale

+1 954 836 9057

Miami

+1 305 686 7051

New York

+1 332 455 0928

Los Angeles

+1 323 986 5808

London

+44 203 962 116

Sydney

+61 272 541 584

Paris

+33 532 63 01 52

Barcelona

+34 931 768 849

Geneva

+41 225 01 74 96

Athens

+30 211 2347975

Moscow

+7 921 8656779