

OCEAN*LUX*

Samurai



Length: 60.30m / 197.83ft

Guests: 12

Cabins: 6

Crew: 15

FEATURES

- Beach club with fold-out swim platform and side boarding.
- Spacious owner's suite with full-height windows and skylight.
- Waterfront gym set-up.
- Innovative indoor-outdoor sundeck with skylight and spa pool.
- Refined interiors with discreet lighting and Asian motifs.
- Impressive collection of tenders and water toys.
- 4,250nm range.
- 15 crew.
- Versatile accommodation.
- Fabulous charter record.
- Impressive exterior and interior volumes.
- Striking exterior line from Omega Architects.
- Chic and functional interior from Redman Whiteley Dixon.
- Huge beach club with gym.
- Oversized on-deck Jacuzzi pool.
- 5-stateroom layout, option for a 6th one.

CABINS DISTRIBUTION

| | | | |
|-------------|----------|-------------|-----------|
| 1 MASTER | 1 VIP | 3 DOUBLE | 1 TWIN |
|-------------|----------|-------------|-----------|

PRICE BY SEASON

Summer
From: \$473,000 /week + expenses

Winter
From: \$490,000 /week + expenses

Samurai

OCEAN*LUX*

SPECIFICATIONS

Length: 60.30m / 197.83ft

Beam: 11.44m / 37.53ft

Draft: 3.35m / 10.99ft

Cruise speed: 15 knots

Max speed: 25 knots

Built: 2016

Builder: Alia Yacht

Exterior design: Omega Architects

Interior design: RWD





DESCRIPTION

The Alia Yacht–built motor yacht, Samurai, measures 60.2m/197'6" and offers versatile accommodation for up to 12 guests in 6 cabins. British designer RWD has styled the interior of the yacht, which boasts various social and dining areas, making it the perfect yacht for entertainment and relaxation while on a charter. Samurai has fantastic features, such as a beach club and a gym.

Built in 2016, Samurai has 6 suites that can accommodate up to 12 guests, comprising a master suite, a VIP cabin, three double cabins, and a cabin that can operate as a twin or double. There are 6 beds in total, including 2 kings, 3 queens, and 1 double. Additionally, up to 15 crew members can be accommodated onboard to provide a relaxing and luxurious yacht charter experience.

Samurai's beach club and well-equipped gym provide guests with comfort and entertainment while onboard. Furthermore, the yacht features impressive amenities that have been seamlessly integrated to provide comfort, such as air conditioning throughout the charter.

With a steel hull and aluminum superstructure, Samurai offers greater onboard space and stability when anchored due to its full-displacement hull. Twin MTU engines power it, and it can reach a maximum speed of 21 knots with a range of up to 4,250 nautical miles from its 114,300-liter fuel tanks at 12 knots. Samurai also has at-anchor stabilizers, which provide exceptional comfort levels.

Samurai has a selection of water toys that allow guests to turn the Mediterranean into their own private playground. With the Jet Skis, guests can enjoy power and control on the water. The yacht also features three SEABOBs, allowing guests to skim along the surface or steer under the crystal-clear water to see a variety of aquatic sea life. There are also four kayaks, inflatable water toys, paddleboards, and snorkeling equipment available.

Samurai and its crew are available for charter this winter for cruising within the Caribbean, and it is already accepting bookings for cruising in the Mediterranean this summer. With its luxurious interiors, vast array of onboard facilities, and a highly trained and professional crew, a luxury yacht vacation onboard motor yacht Samurai promises to be nothing short of spectacular.

AMENITIES

| | | | | | |
|-----------------------|-------------------------|-------------|-----------------------------|---------------|--------------|
| Jacuzzi | Sun Deck | Crane | Air Conditioning | Tender Garage | Bow Thruster |
| At-Anchor Stabilizers | | Outdoor Bar | Foredeck Seating with Table | | Gym |
| Sunpads | Hydraulic Swim Platform | | Beach Club | | |

TOYS

| | | | |
|---------------------------|-------------|---------------------|------------------|
| 2 x Jet Skis | 3 x Seabobs | 4 x Kayaks | 5 x Paddleboards |
| 10 x Snorkeling Equipment | | 5 x Inflatable toys | |

For full list of available amenities & toys or price to hire additional equipment please [contact us](#)

Samurai

OCEANLUX













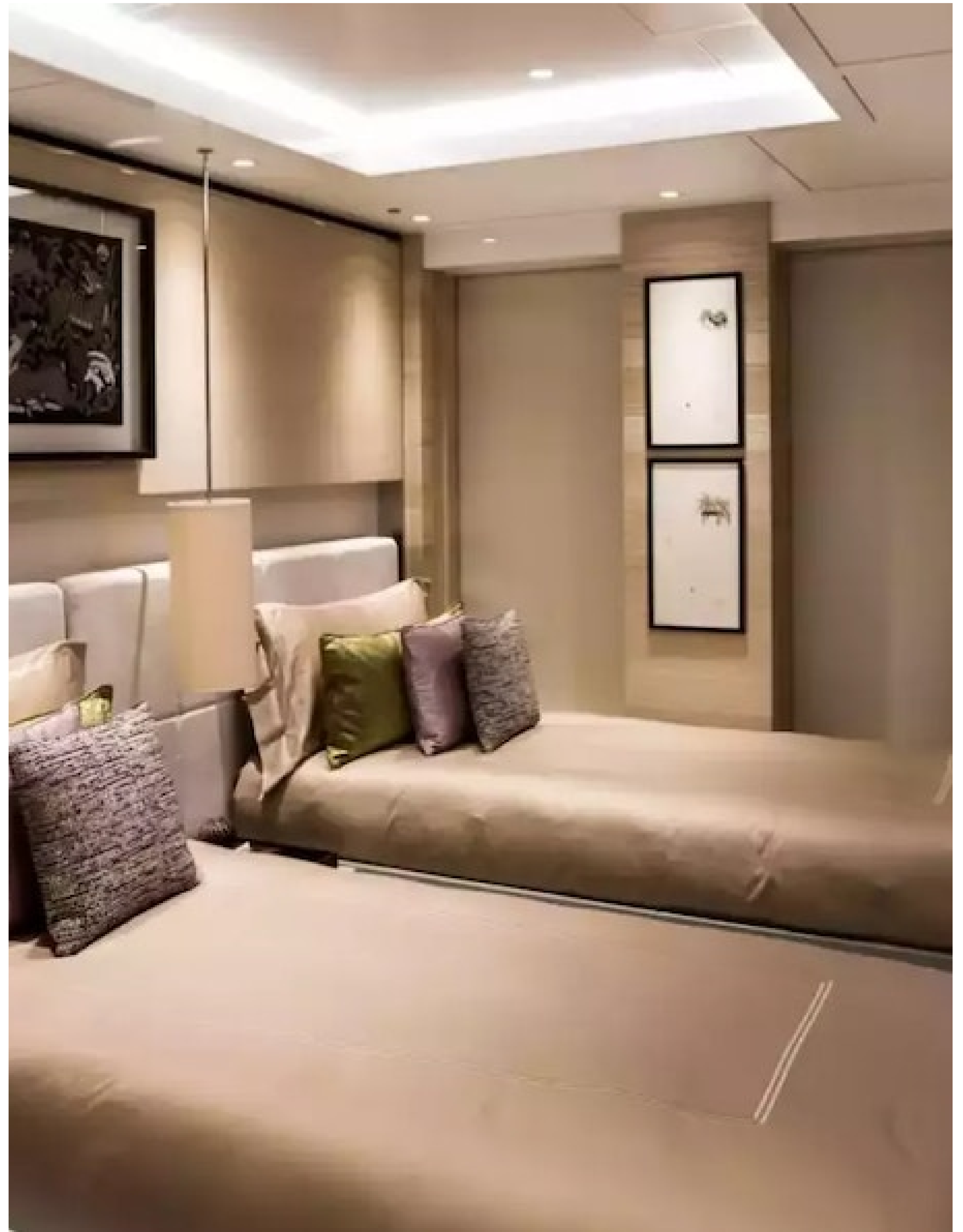


















OCEAN*LUX*

Floating expression of *YOU*

www.oceanluxyachts.com

Fort Lauderdale

+1 954 836 9057

Miami

+1 305 686 7051

New York

+1 332 455 0928

Los Angeles

+1 323 986 5808

London

+44 203 962 116

Sydney

+61 272 541 584

Paris

+33 532 63 01 52

Barcelona

+34 931 768 849

Geneva

+41 225 01 74 96

Athens

+30 211 2347975

Moscow

+7 921 8656779