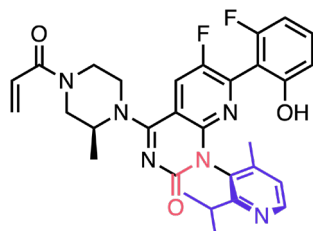
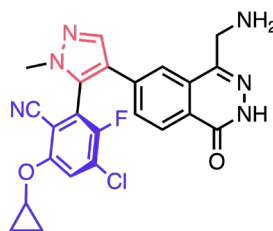


# Examples of Configurationally Stable Atropisomers Among Drugs and Drug Candidates



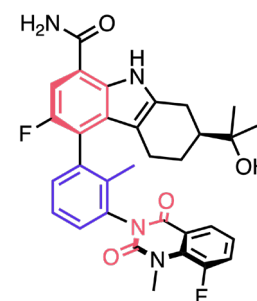
## sotorasib

KRAS<sup>G12C</sup> inhibitor  
C–N arylamide  
Chiral Salt Resolution



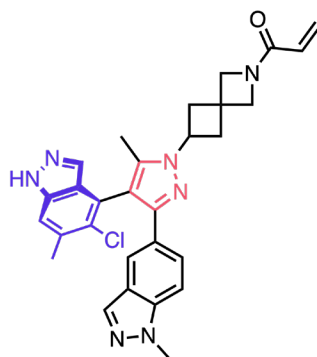
## MRTX1719

PRMT5 inhibitor  
C–C biaryl  
Dynamic Kinetic Resolution



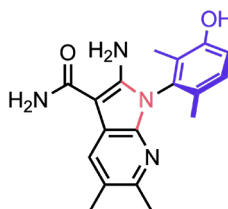
## BMS-986142

BTK inhibitor  
C–C biaryl & C–N arylamide  
Asymmetric Suzuki–Miyaura Coupling  
Li Chelation–Controlled Cyclization



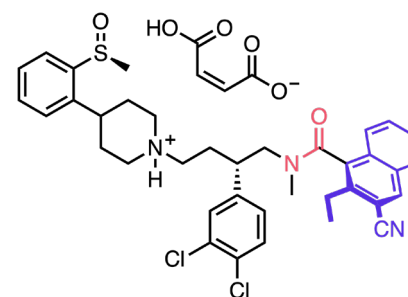
## JDQ443

KRAS<sup>G12C</sup> inhibitor  
C–C biaryl  
Chiral Salt Resolution



## RP-6306

PKMYT1 inhibitor  
C–N arylamine  
SFC Separation



## ZM374979

Neurokinin agonist  
C–C arylamide  
Maleate Salt Crystallization

**Figure 1.** Recent examples of stable atropisomers among drugs and drug candidates including mechanism of action, synthetic access method, and stereogenic axis for axial chirality.