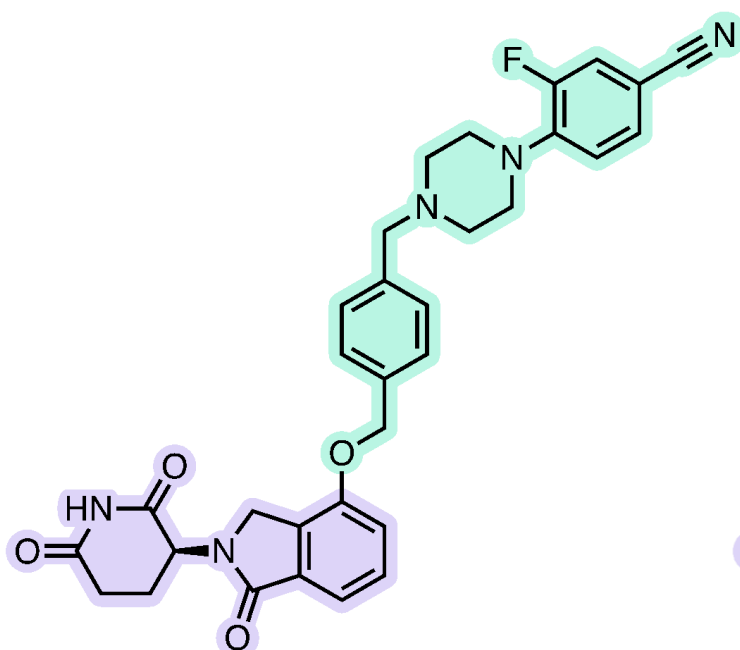


Selected CRBN-Based Degraders in the Clinic

From "The Molecular Glue Degraders Landscape in 2022"

clinical molecular glue degrader examples



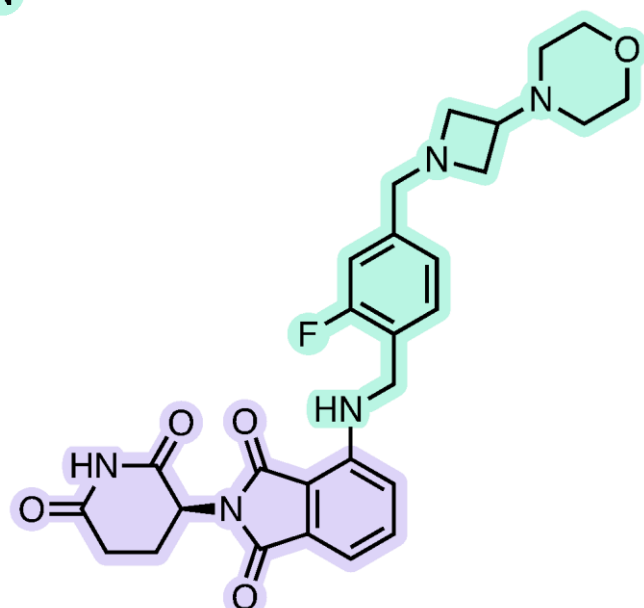
CC-92480

(mezigdomide)

oral IKZF1/3 degrader
in Ph. I/II/III for R/R MM

CAS RN: 2259648-80-9

CELGENE/BMS



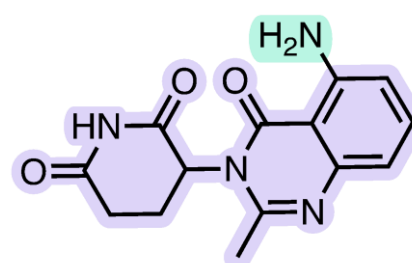
CC-99282

(golcadomide)

oral IKZF1/3 degrader
in Ph. I/II for lymphomas

CAS RN: 2379572-34-4

CELGENE/BMS



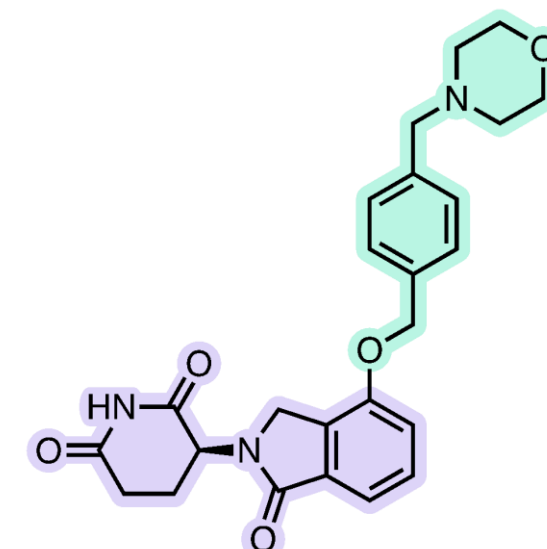
CC-122

(avadomide)

oral IKZF1/3 + ZFP91 degrader
in Ph. I for various cancers

CAS RN: 1015474-32-4

CELGENE/BMS



CC-220

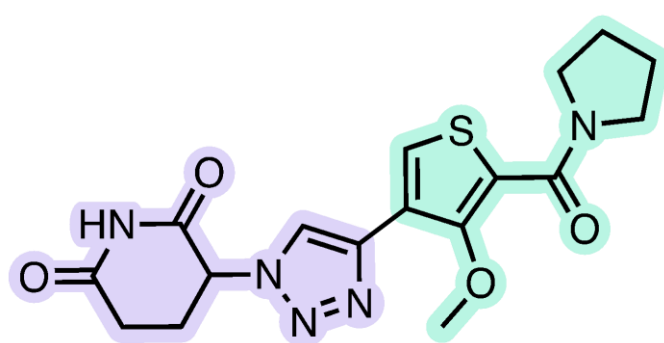
(iberdomide)

oral IKZF1/3 + ZFP91/98 degrader
in Ph. I/II/III for various cancers

CAS RN: 1323403-33-3

CELGENE/BMS

preclinical molecular glue degrader example



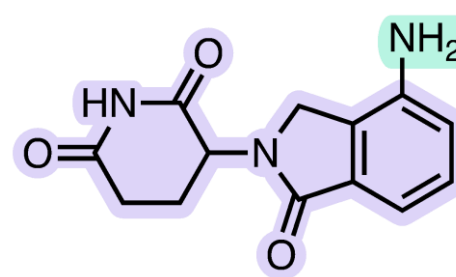
TMX-4116

CK1α degrader
preclinical candidate

CAS RN: 2766385-56-0

DANA-FARBER / STANFORD

approved molecular glue degrader examples



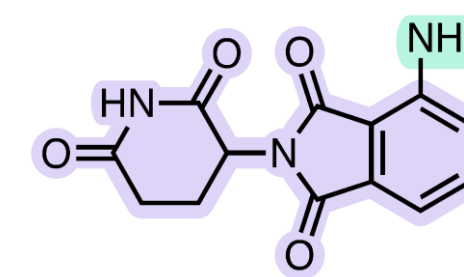
lenalidomide

(Revlimid, CC-5013)

oral IKZF1/3 + CK1α degrader
approved for MM, MDS, MCL, FL (2015)

CAS RN: 191732-72-6

CELGENE



pomalidomide

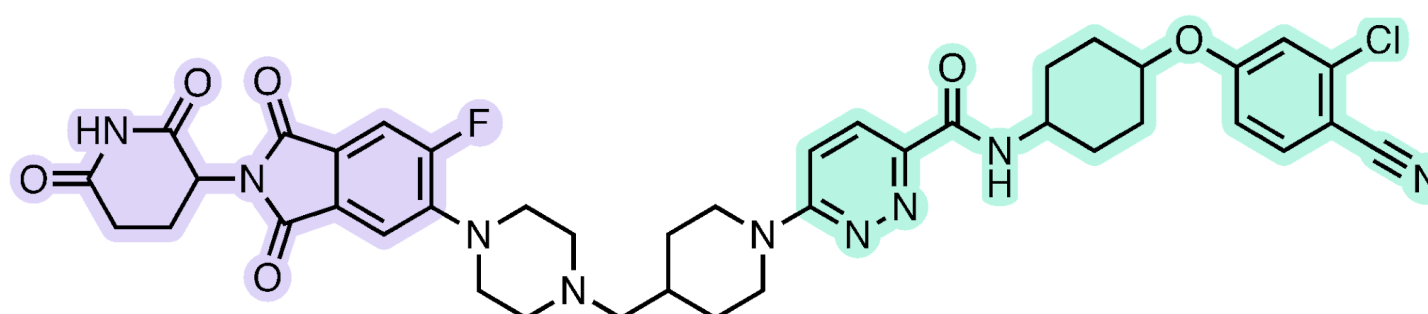
(Pomalyst, CC-4047)

oral IKZF1/3 degrader approved
for r/r MM (2013)

CAS RN: 19171-19-8

CELGENE

clinical CRBN-based PROTAC example



ARV-110

oral androgen receptor PROTAC degrader
in Ph. II for prostate cancer

CAS RN: 2222112-77-6

ARVINAS

**drug
hunter**

drughunter.com

Access the 2022 CAS Insights article here: drughunters.com/molglues

Access the 2022 CAS article here: drughunters.com/casbiochem