

1-866-925-8201
clientcare@yakta.com
yakta.com



YAKTA

YXR710

BAGGER MANUAL

LAB160001
REV B 9/19/24

SYSTEMS COVERED BY THIS MANUAL

2024 YAKTA YXR 710:

54" DECK

- 305 800 001 - 2 BAG SYSTEM
- 305 800 002 - 54" BLOWER
- 305 800 003 - 3 BAG SYSTEM

• 61" DECK

- 305 800 004 - 3 BAG SYSTEM
- 305 800 005 - 61" BLOWER

THE FOLLOWING MANUAL(S) WILL BE USED IN ADDITION TO THIS MANUAL
(DEPENDING ON APPLICATION)

- LAB154075 (GENERIC 2-BAG INSTALL)
- LAB154076 (GENERIC 3-BAG INSTALL)
- LAB154077 (GENERIC DDFS INSTALL)
- LAB154079 (GENERIC FDFS INSTALL)
- LAB154082 (GENERIC 18" BLOWER)

Safety Information

NOTICE!!!

Unauthorized modifications may present extreme safety hazards to operators and bystanders and could also result in product damage.

OPERATING SAFELY

Disengage the PTO whenever the deck is raised and in transport mode.

Do not operate the machine without either the discharge chute or the grass catcher fully installed.

Stop the engine, disengage the PTO and wait until the blades quit rotating before removing the grass catcher.

Stop the engine, disengage the PTO, and remove the key when stopping operation to clear blockages, unclog, inspect the attachment, or do maintenance or repair.

If the machine begins to vibrate abnormally or make abnormal sounds, stop the engine and disengage the PTO. Inspect the attachment and have necessary repairs performed by a qualified technician.

Use extra care with grass catchers. These attachments can change the stability of the machine and alter the stability during operation. Read and understand all operation and safety precautions associated with operating your machine on slopes and in other hazardous conditions. Do not attempt to exceed these recommendations with your grass collection system attached.

Only operate the catcher attachment with all guards fully installed.

Inspect grass catcher components regularly. If worn, damaged or deteriorated, they may expose moving parts or allow objects to be thrown.

Mow only in daylight.

Check operator presence interlock system and brake operation prior to each days use. Adjust or repair any problems before using.

Clear the area to be mowed of objects such as rocks, toys, wire, or other debris that may be picked up or thrown by the catcher.

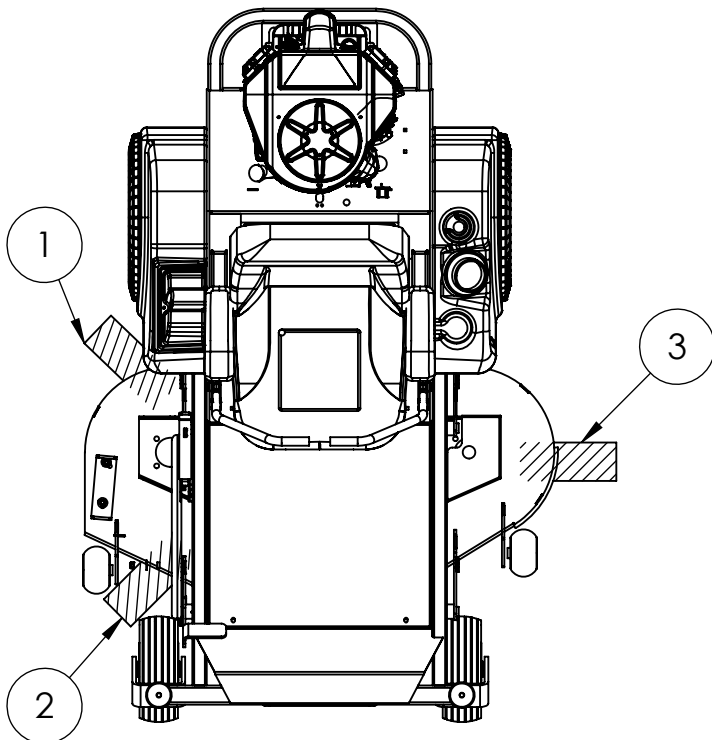
Be sure the area is clear of pets and people, especially young children. Never assume they will remain where you last saw them. Stop the machine if any enter the area.

Evaluate the terrain to determine if the machine can safely perform the job. Remember that slopes and irregular terrain may cause tires to lose traction resulting in loss of control. Use extreme caution on wet grass, as this will increase risk.

DECK PARTS INSTALLATION INSTRUCTIONS

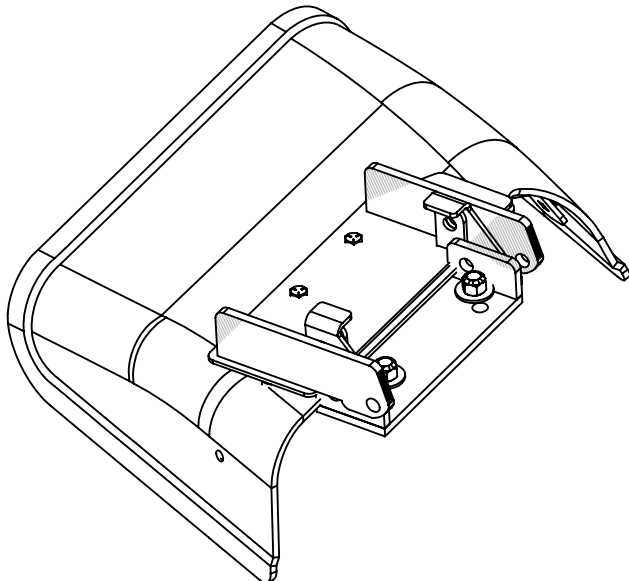
FOR SAFETY, THE FOLLOWING OPERATIONS SHOULD BE DONE WITH

- ENGINE OFF
- KEY OUT OF IGNITION
- NEGATIVE BATTERY CABLE REMOVED OR BATTERY DISCONNECT KEY REMOVED
- WHEELS LOCKED IN PLACE



SUPPORT THE DECK

- MAKE SURE THE MOWER IS PARKED ON LEVEL GROUND AND SET THE BRAKE.
- RAISE THE DECK TO ITS HIGHEST POSITION.
- PLACE BLOCKS IN AT LEAST THE THREE POINTS SHOWN (1) (2) (3).
- LOWER THE DECK UNTIL IT RESTS FIRMLY ON ALL BLOCKS.
- MAKE SURE BLOCKS ARE CLEAR OF OBSTRUCTIONS FROM TIRES OR THE DECK.



REMOVE THE FACTORY DEFLECTOR

- FOLLOW MANUFACTURERS DIRECTIONS FOR REMOVING THE DEFLECTOR
- RETAIN ALL OF THE FACTORY PARTS AND HARDWARE
- YOU SHOULD ALWAYS REINSTALL THE DEFLECTOR WHEN THE BLOWER OR SIDE CATCHER IS REMOVED FROM THE MOWER

THE FACTORY DEFLECTOR SHOULD ALWAYS BE USED WHEN THE COLLECTION SYSTEM IS REMOVED!!!!!!

ADVICE AND CAUTIONS ON THE USE OF GRASS AND LEAF COLLECTION SYSTEMS

Grass and Leaf collection systems are designed for many brands of Zero Turn Mowers, Compact Tractors, and Walk Behind Lawn Mowers. These products are tested under a multiplicity of conditions. They are not guaranteed to perform optimally under any and all conditions!

Depending on the time of year, makeup of the grass, moisture, depth of cut, speed of mowing or cleaning and the horsepower available, the performance of your grass catcher will vary. Catchers perform well in most situations but not all! During periods of lush grass, wet grass, leaves or other factors, you may have to adjust your mowing to fit the conditions. The use of special hi-lift blades is also recommended in most conditions. During leaf cleanup some systems work better with mulching blades. Check your system to assure proper grass catcher system installation.

Clogging of catchers, although infrequent, can happen in any condition. If this should occur, all hoses are secured with a quick clip attachment which allows clearing a clog quickly and without tools.

Machines are equipped with many different brands of horsepower rated engines and various hydraulic systems. There is, for many mowers, a point where the weight of the mower, operator, catcher system and the clippings or leaves can start to effect the operation of the machine and life of drive components. This is particularly true if mowing on non-level terrain. If this should occur you will have to compensate by decreasing depth of cut, not filling the bags or hopper to full capacity or slowing the speed of mowing.

Products described in this publication are designed and manufactured so that they will work on the mowers/tractors described.

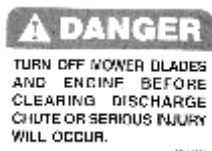
Safety Label Information



Warning: Thrown Objects
Keep area clear of people and pets
Remove objects blade may throw
Stop blades when crossing gravel areas



Danger: Rotating Blades
Keep hands and feet away
Stop engine and let blades stop
before clearing clog

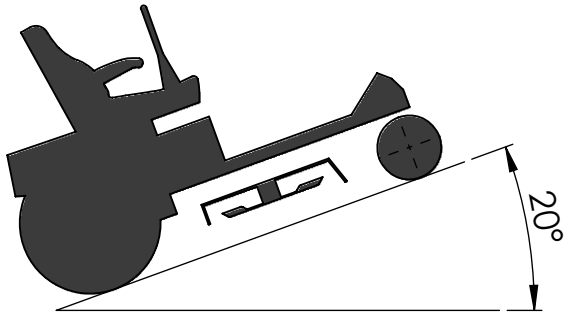


Danger:
Turn off mower blades and engine
before clearing discharge chute or
serious injury will occur

HOW TO USE YOUR BAGGING SYSTEM

Your bagging system is designed to function in a variety of conditions, each of which will need a slightly different approach for the equipment to perform at its highest possible level.

Always remember - SAFETY FIRST -

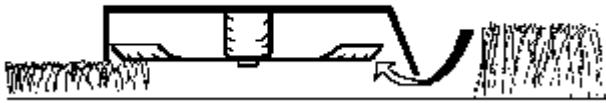


SLOPES AND UNEVEN TERRAIN

- NEVER MOW ON SLOPES OVER 20° WHEN USING A BAGGER
- AVOID MOWING ACROSS A SLOPE, USE DIAGONALS OR GO UP AND DOWN

AIR FLOW AND MOWING

- MOWERS ARE NOT VACUUMS, AIR NEEDS TO GET TO THE DECK IN ORDER FOR IT TO FUNCTION
- KEEP AT LEAST A 1" GAP FROM THE FRONT OF THE MOWER DECK AND THE THATCH LAYER OR GROUND
- MAINTAIN A 2" - 3" FINAL CUT HEIGHT



TIPS & TRICKS TO BAGGING

NORMAL MOWING CONDITIONS

- Use a 2" - 3" final cut height
- The faster you mow the lower the cut quality
- Overlap your cut path by at least 10% of deck width

HEAVY, TALL or THICK GRASS

- Avoid cutting more than 3" of grass from your lawn in any single pass
- Make multiple passes at different heights in overgrown areas to get to a final cut
- Some areas will need to be cut without bagging on the first pass, then go over the area again to collect the clippings

WET CONDITIONS

- Avoid cutting in wet conditions when possible
- Wet grass or leaves can build up under the deck and inside the blower.
- Clean your deck and blower after mowing in wet conditions.
- Wet conditions create ideal opportunities for clogging a bagger, mow higher and go slower

DRY CONDITIONS

- Cutting in dry conditions creates dust
- The bagger may appear to have 'leaks' that weren't there during normal operations due to dry conditions
- Dry lawns don't grow very fast, reduce mowing frequency and increase watering if possible

LEAF SEASON

Collecting leaves is much different than collecting grass clippings. Use this technique to make your Fall and Spring cleanup as easy as possible.

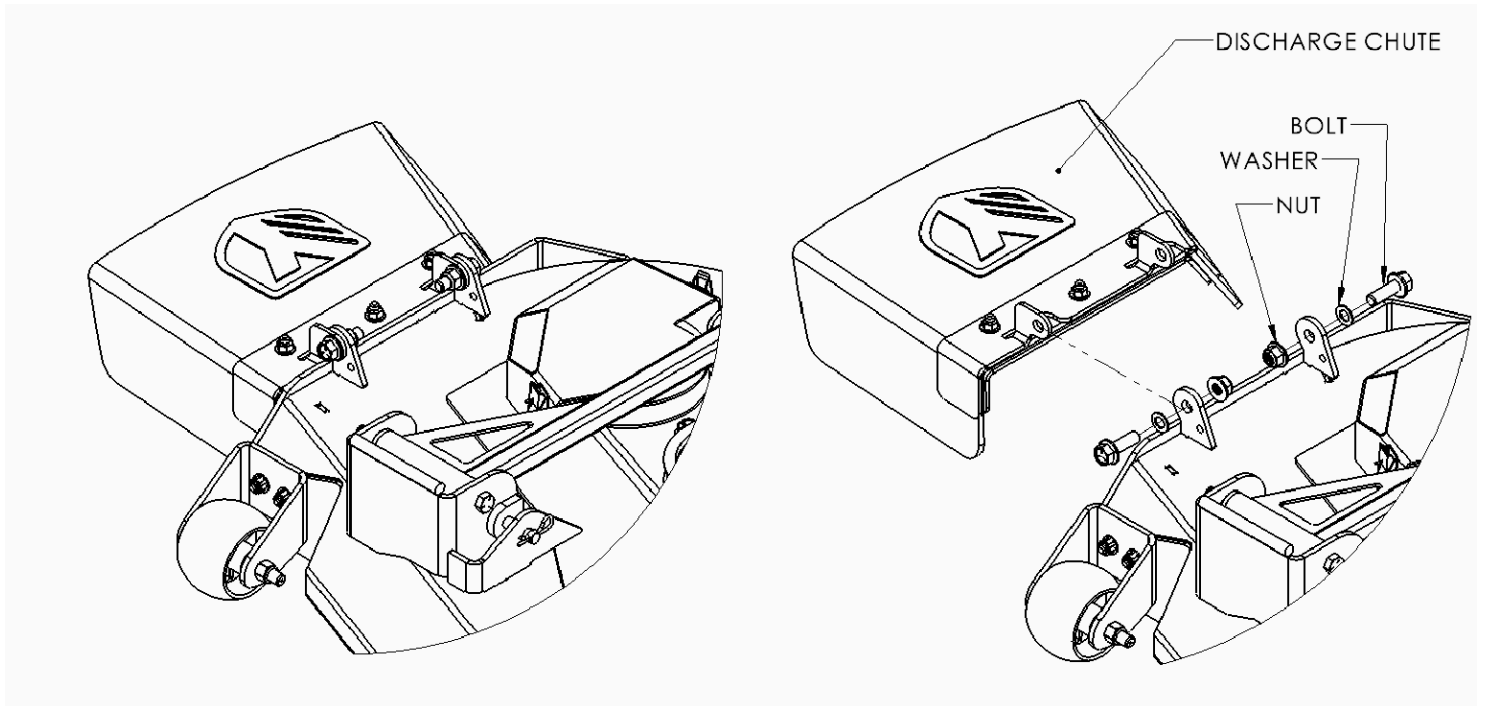
- Allow the bagger to clog - then use your mower as a mulcher - this allows for better cutting of the leaves and easier collecting
- Once all the leaves have been mulched, clear your clog and make another pass, you will actually bag a greater volume of leaves this way
- Large wet leaves weigh more than grass of the same volume, lift bags carefully

YAKTA YXR 710

DISCHARGE CHUTE REMOVAL

FOR SAFETY, THE FOLLOWING OPERATIONS SHOULD BE DONE WITH

- ENGINE OFF
- NEGATIVE BATTERY CABLE REMOVED OR BATTERY DISCONNECT KEY REMOVED
- KEY OUT OF IGNITION
- WHEELS LOCKED IN PLACE



DISCHARGE CHUTE REMOVAL

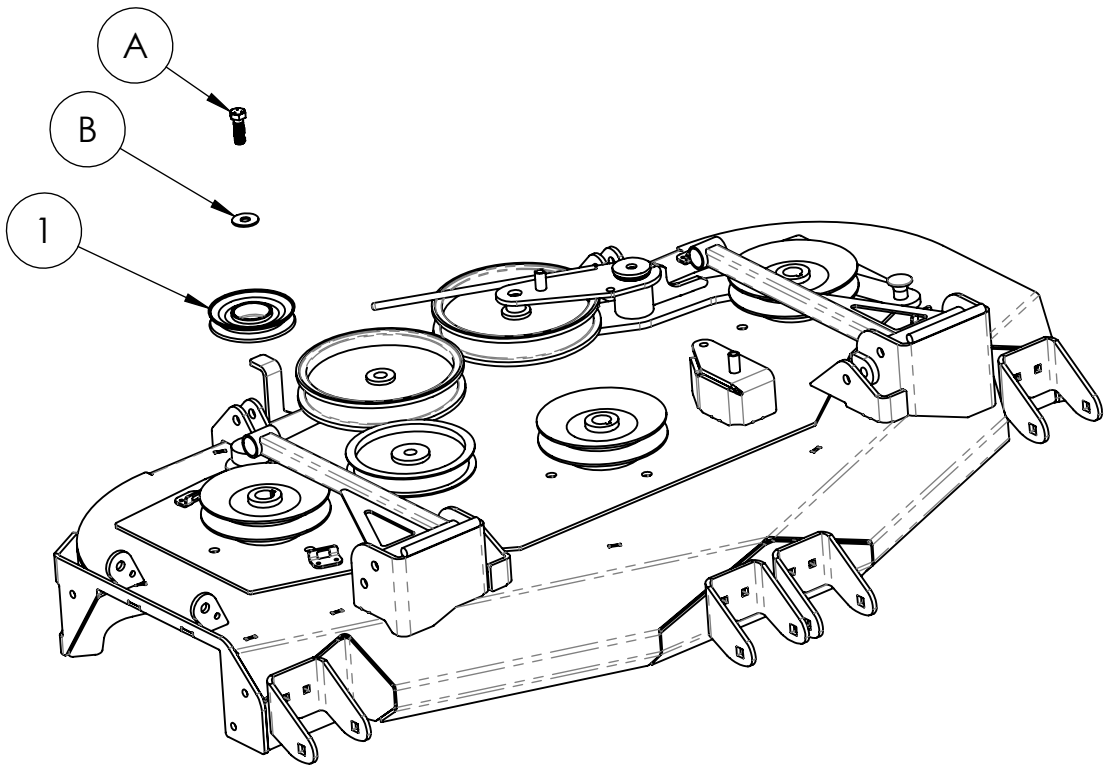
- LOOSEN NUTS AND BOLTS SECURING THE DISCHARGE DEFLECTOR.
- REMOVE DISCHARGE DEFLECTOR AND SET ASIDE WITH MOUNTING HARDWARE.
- REMOVE THE DISCHARGE SIDE FACTORY PULLEY COVER AND SET ASIDE.

YAKTA YXR 710

DRIVE PULLEY INSTALLATION

FOR SAFETY, THE FOLLOWING OPERATIONS SHOULD BE DONE WITH

- ENGINE OFF
- NEGATIVE BATTERY CABLE REMOVED OR BATTERY DISCONNECT KEY REMOVED
- KEY OUT OF IGNITION
- WHEELS LOCKED IN PLACE



PULLEY INSTALLATION INSTRUCTIONS

- REMOVE THE FACTORY BOLT (A) & FLAT WASHER (B) FROM THE DISCHARGE SIDE SPINDLE AND SAVE
- PLACE DRIVE PULLEY (1) (CUP SIDE UP) ON TOP OF DECK PULLEY (C) OVER THE SHAFT OF THE SPINDLE
- REINSTALL THE FACTORY HARDWARE (A) & (B) TO SECURE PULLEYS
- TORQUE BOLT TO FACTORY RECOMMENDED SPECS - 115 /120 FT -LBS

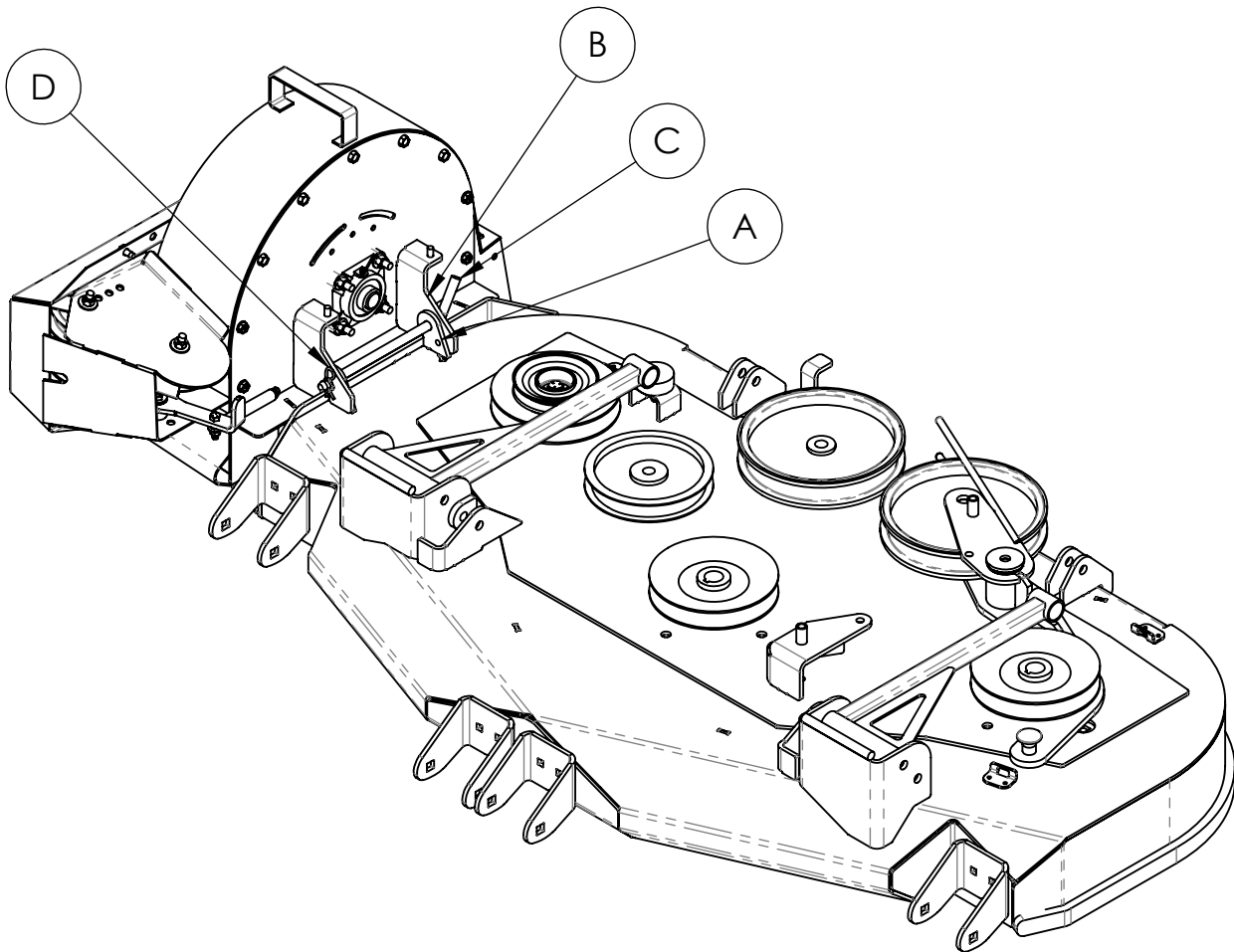
ITEM NO.	PART NUMBER	DESCRIPTION	DRIVE PULLEY INSTALL/QTY.
1	FRA160700	PULLEY, 4 1/2" AB X 5/8" BORE	1

YAKTA YXR 710

BLOWER INSTALLATION

FOR SAFETY, THE FOLLOWING OPERATIONS SHOULD BE DONE WITH

- ENGINE OFF
- NEGATIVE BATTERY CABLE REMOVED OR BATTERY DISCONNECT KEY REMOVED
- KEY OUT OF IGNITION
- WHEELS LOCKED IN PLACE



BLOWER INSTALLATION

- ALIGN THE HOLES (A) ON THE DECK BRACKET EARS AND THE BLOWER MOUNT EARS (B)
- DECK BRACKET EARS INSIDE THE BLOWER MOUNT EARS
- INSTALL THE L PIN (C) THROUGH ALL (4) HOLES AND SECURE WITH THE HAIRPIN (D)

YAKTA YXR 710

PULLEY COVER INSTALLATION

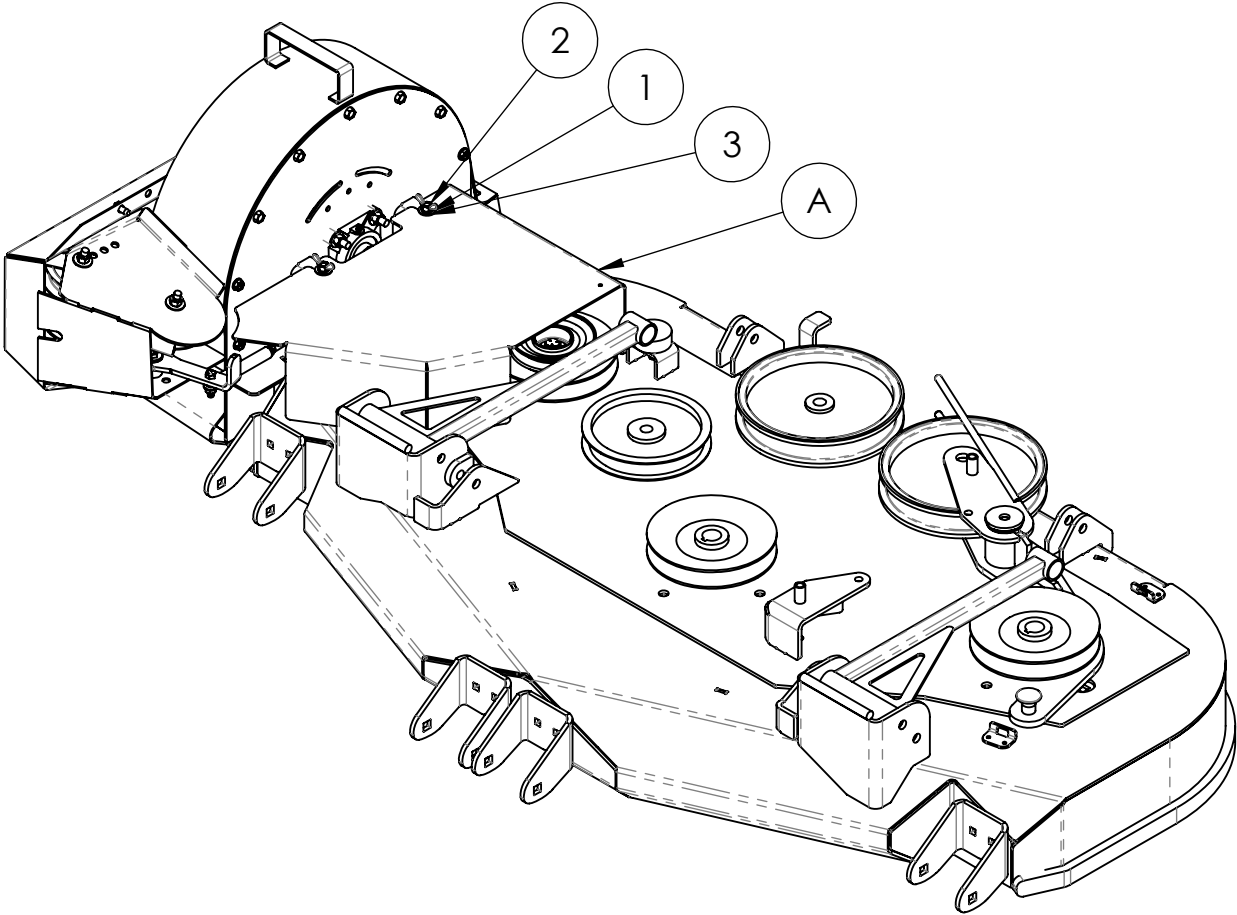
FOR SAFETY, THE FOLLOWING OPERATIONS SHOULD BE DONE WITH

● ENGINE OFF

● KEY OUT OF IGNITION

● NEGATIVE BATTERY CABLE REMOVED OR BATTERY DISCONNECT KEY REMOVED

● WHEELS LOCKED IN PLACE



PULLEY COVER INSTALLATION

- ALIGN SLOTS ON PULLEY COVER (A) WITH MOUNTING FEATURES ON BLOWER MOUNT EARS
- USE FLAT WASHERS (3) LOCK WASHERS (1) AND WING NUTS (2) TO SECURE PULLEY COVER

ITEM NO.	PART NUMBER	DESCRIPTION	DRIVE PULLEY INSTALL/QTY.
1	FAS150781	5/16 LOCKWASHER	2
2	FAS150793	5/16 WING NUT	2
3	FAS150812	5/16 FLAT WASHER	2

YAKTA YXR 710

BELT ROUTING AND IDLER POSITION

FOR SAFETY, THE FOLLOWING OPERATIONS SHOULD BE DONE WITH

- ENGINE OFF
- NEGATIVE BATTERY CABLE REMOVED OR BATTERY DISCONNECT KEY REMOVED
- KEY OUT OF IGNITION
- WHEELS LOCKED IN PLACE

BELT INSTALLATION INSTRUCTIONS

- INSTALL BLOWER ASSEMBLY ONTO MOWER DECK
- PULL ON HANDLE ON FRONT OF BLOWER ASSEMBLY TO EXTEND BELT.
- WITH HANDLE PULLED BACK, PLACE BELT ONTO DECK PULLEY
- MAKE SURE BELT MAKES AN 'X' OVER THE DECK
- RELEASE HANDLE TO TENSION THE BELT.
- INSTALL DECK PULLEY COVER

**BELT FIT TIPS

- THE SYSTEM IS DESIGNED TO HAVE A LOOSE FITTING BELT. IT IS NORMAL TO HAVE THE 3-4 INCHES OF MOVEMENT IN THE BELT WITH THE TENSIONER ENGAGED
- MAKE SURE THE BELT MAKES AN "X", IF IT DOESN'T, THE SYSTEM WILL NOT COLLECT CLIPPINGS.

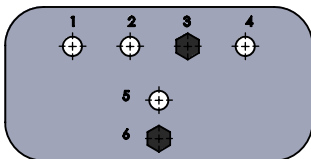
Pull handle to
relieve belt tension

**Belt Should Make
An 'X' Over Deck**

Installed Deck Pulley

Top View of
Blower Assembly

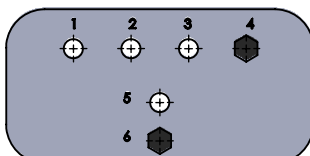
54" DECK



HOLE POSITION
3 AND 6

OTH154917 - 95" BELT

61" DECK



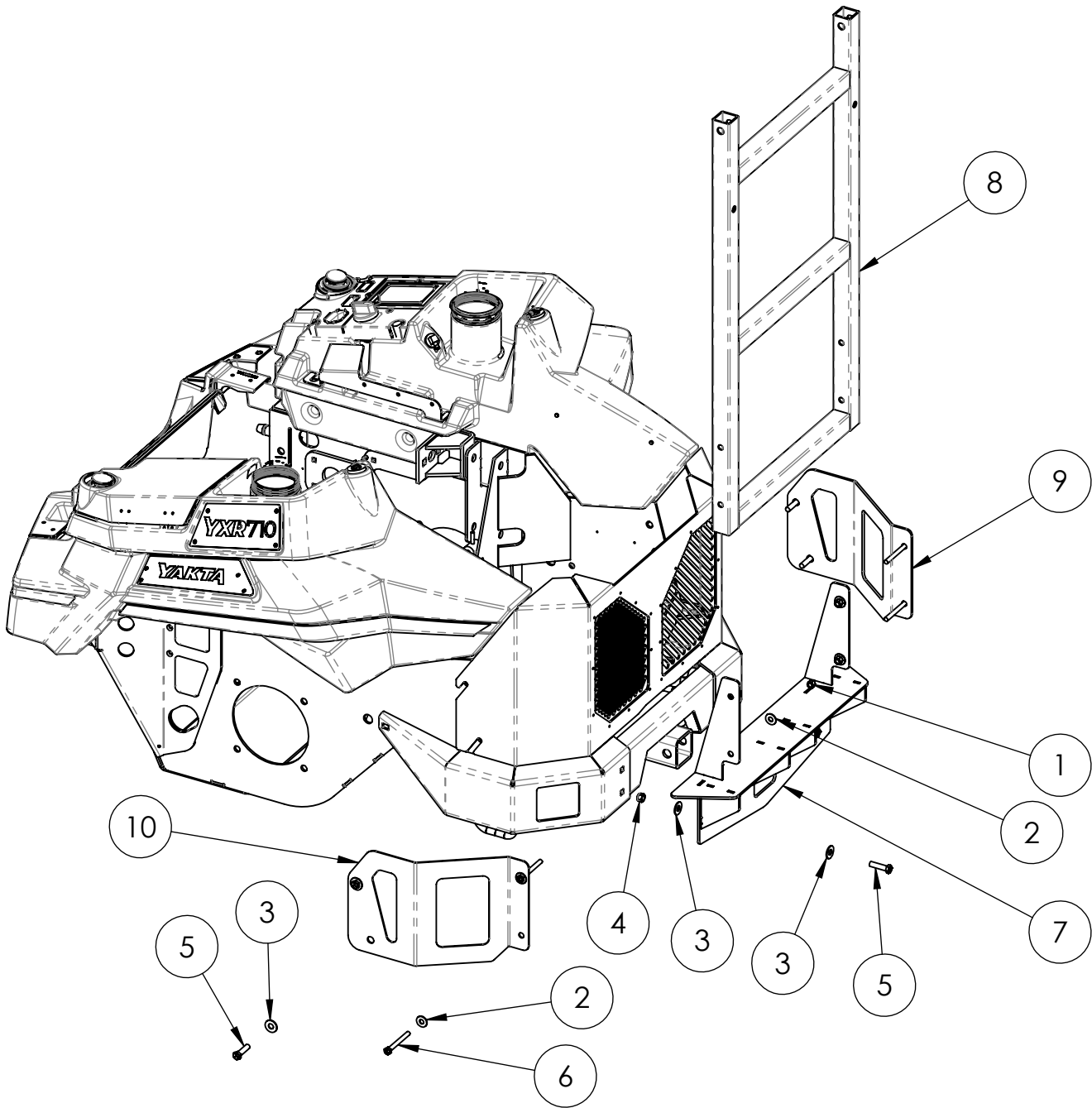
HOLE POSITION
4 AND 6

OTH154917 - 95" BELT

YAKTA YXR 710
LEG SET INSTALLATION

FOR SAFETY, THE FOLLOWING OPERATIONS SHOULD BE DONE WITH

- ENGINE OFF
- NEGATIVE BATTERY CABLE REMOVED OR BATTERY DISCONNECT KEY REMOVED
- KEY OUT OF IGNITION
- WHEELS LOCKED IN PLACE



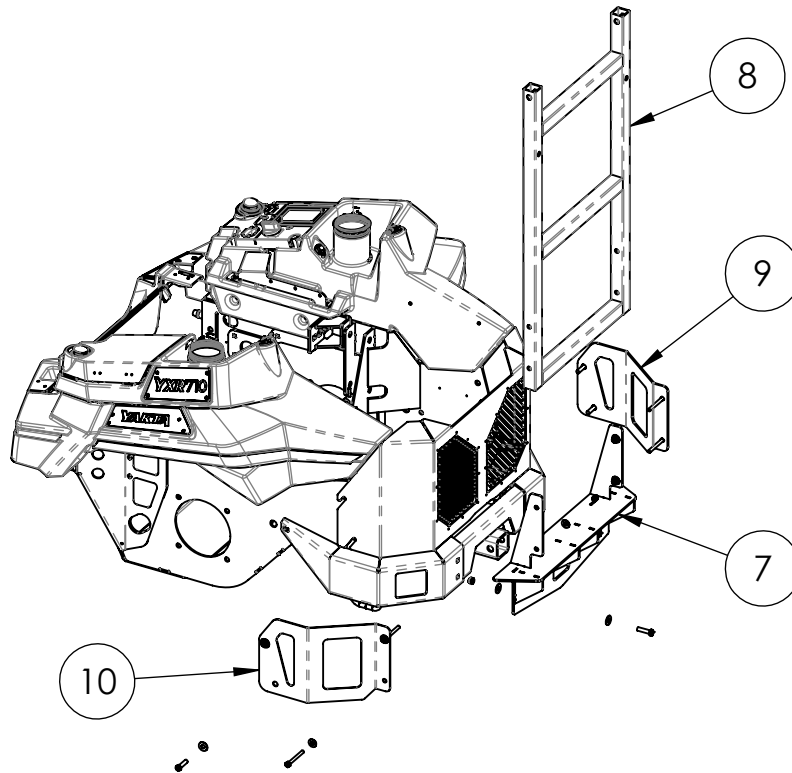
ITEM NO.	PART NUMBER	DESCRIPTION	QTY.
1	FAS150801	5/16-18 NYLON INSERT NUT	4
2	FAS150812	5/16 FLAT WASHER	8
3	FAS150815	3/8 WASHER SAE	12
4	FAS150816	3/8-16 NYLON INSERT NUT	4
5	FAS150858	3/8-16 X 1.50 CAP SCREW	8
6	FAS150961	CAP SCREW 5/16-18 x .3.0	4
7	FRA160401	LEGSET BASE	1
8	FRA160402	CATCHER MOUNT	1
9	FRA160403	DISCHARGE SIDE SUPPORT	1
10	FRA160404	CURB SIDE SUPPORT	1

YAKTA YXR 710

LEG SET INSTALLATION (CONTINUED)

FOR SAFETY, THE FOLLOWING OPERATIONS SHOULD BE DONE WITH

- ENGINE OFF
- NEGATIVE BATTERY CABLE REMOVED OR BATTERY DISCONNECT KEY REMOVED
- KEY OUT OF IGNITION
- WHEELS LOCKED IN PLACE

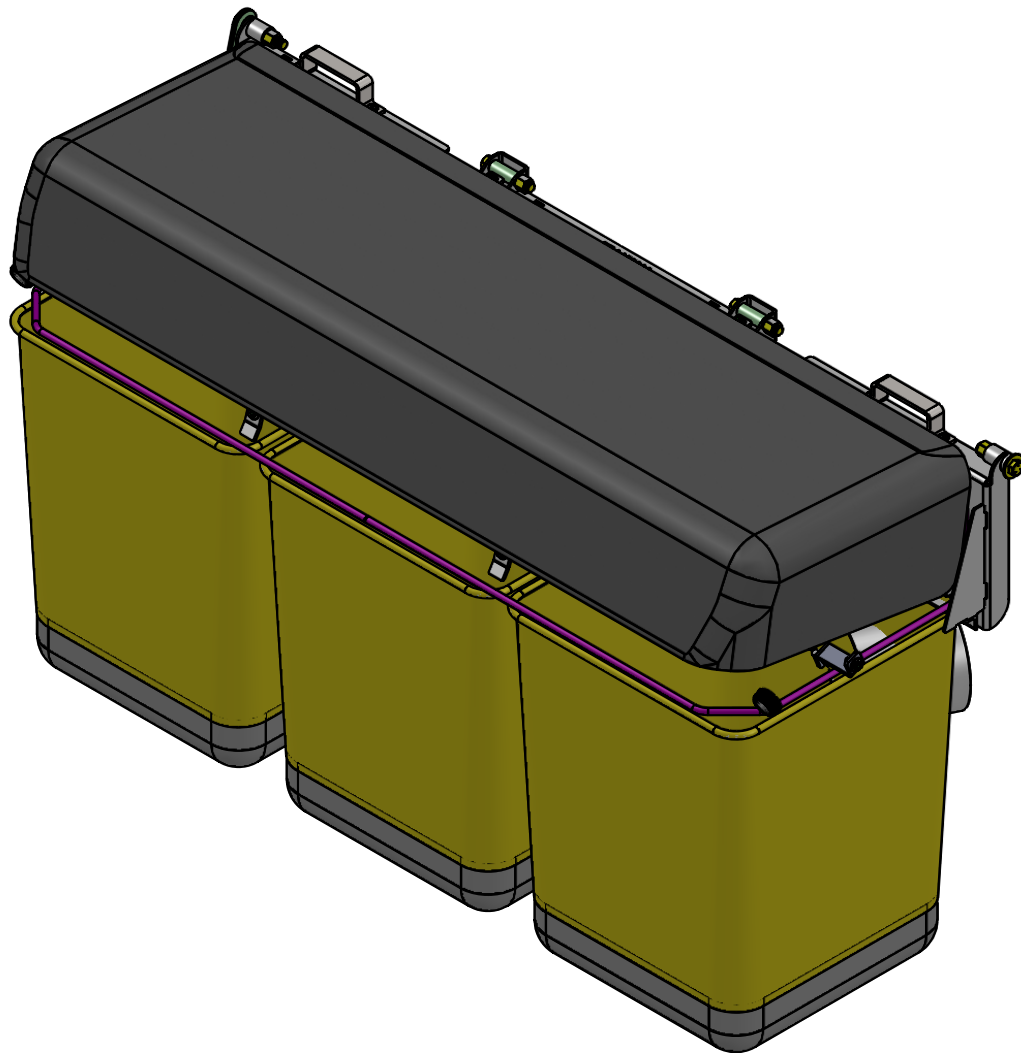


LEG SET INSTALLATION INSTRUCTIONS

DO NOT FULLY TIGHTEN HARDWARE UNTIL ALL PIECES ARE IN PLACE

- REMOVE HARDWARE SECURING THE RECEIVER HITCH AND SAVE.
- ATTACH LEG SET BASE (7) USING 3/8" BOLTS, FLATS AND NYLOCKS.
- REMOVE HARDWARE SECURING THE ENGINE GUARD AND SAVE.
- ATTACH CURB SIDE (10) AND DISCHARGE SIDE (9) SUPPORTS USING 3/8" BOLTS AND FLATS.
- INSTALL CATCHER MOUNT (8) USING 5/16" BOLTS, FLATS AND NYLOCK
- MAKE FINAL ADJUSTMENTS AND TIGHTEN ALL HARDWARE

3-BAG REAR CATCHER INSTALLATION AND OPERATING INSTRUCTIONS



ADVICE AND CAUTIONS ON THE USE OF GRASS AND LEAF COLLECTION SYSTEMS

Grass and Leaf collection systems are designed for many brands of Zero Turn Mowers, Compact Tractors, and Walk Behind Lawn Mowers. These products are tested under a multiplicity of conditions. They are not guaranteed to perform optimally under any and all conditions!

Depending on the time of year, makeup of the grass, moisture, depth of cut, speed of mowing or cleaning and the horsepower available, the performance of your grass catcher will vary. Catchers perform well in most situations but not all! During periods of lush grass, wet grass, leaves or other factors, you may have to adjust your mowing to fit the conditions. The use of special hi-lift blades is also recommended in most conditions. During leaf cleanup some systems work better with mulching blades. Check your system to assure proper grass catcher system installation.

Clogging of catchers, although infrequent, can happen in any condition. If this should occur, all hoses are secured with a quick clip attachment which allows clearing a clog quickly and without tools.

Machines are equipped with many different brands of horsepower rated engines and various hydraulic systems. There is, for many mowers, a point where the weight of the mower, operator, catcher system and the clippings or leaves can start to effect the operation of the machine and life of drive components. This is particularly true if mowing on non-level terrain. If this should occur you will have to compensate by decreasing depth of cut, not filling the bags or hopper to full capacity or slowing the speed of mowing.

Products described in this publication are designed and manufactured so that they will work on the mowers/tractors described.

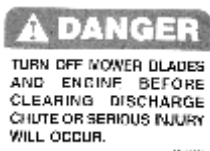
Safety Label Information



Warning: Thrown Objects
Keep area clear of people and pets
Remove objects blade may throw
Stop blades when crossing gravel areas



Danger: Rotating Blades
Keep hands and feet away
Stop engine and let blades stop
before clearing clog



Danger:
Turn off mower blades and engine
before clearing discharge chute or
serious injury will occur

Safety Information

NOTICE!!!

Unauthorized modifications may present extreme safety hazards to operators and bystanders and could also result in product damage.

OPERATING SAFELY

Disengage the PTO whenever the deck is raised and in transport mode.

Do not operate the machine without either the discharge chute or the grass catcher fully installed.

Stop the engine, disengage the PTO and wait until the blades quit rotating before removing the grass catcher.

Stop the engine, disengage the PTO, and remove the key when stopping operation to clear blockages, unclog, inspect the attachment, or do maintenance or repair.

If the machine begins to vibrate abnormally or make abnormal sounds, stop the engine and disengage the PTO. Inspect the attachment and have necessary repairs performed by a qualified technician.

Use extra care with grass catchers. These attachments can change the stability of the machine and alter the stability during operation. Read and understand all operation and safety precautions associated with operating your machine on slopes and in other hazardous conditions. Do not attempt to exceed these recommendations with your grass collection system attached.

Only operate the catcher attachment with all guards fully installed.

Inspect grass catcher components regularly. If worn, damaged or deteriorated, they may expose moving parts or allow objects to be thrown.

Mow only in daylight.

Check operator presence interlock system and brake operation prior to each days use. Adjust or repair any problems before using.

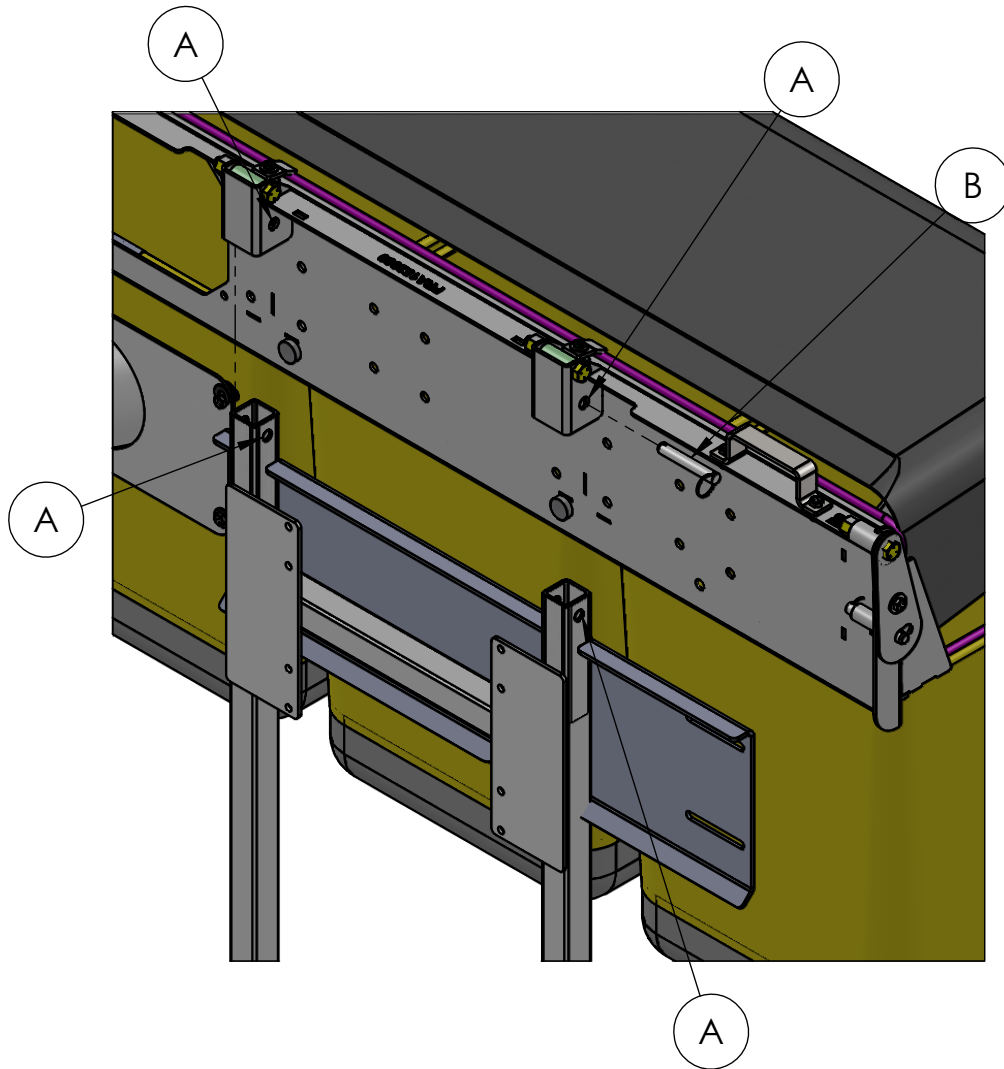
Clear the area to be mowed of objects such as rocks, toys, wire, or other debris that may be picked up or thrown by the catcher.

Be sure the area is clear of pets and people, especially young children. Never assume they will remain where you last saw them. Stop the machine if any enter the area.

Evaluate the terrain to determine if the machine can safely perform the job. Remember that slopes and irregular terrain may cause tires to lose traction resulting in loss of control. Use extreme caution on wet grass, as this will increase risk.

3-BAG CATCHER INSTALLATION

MOUNT PANEL STYLE



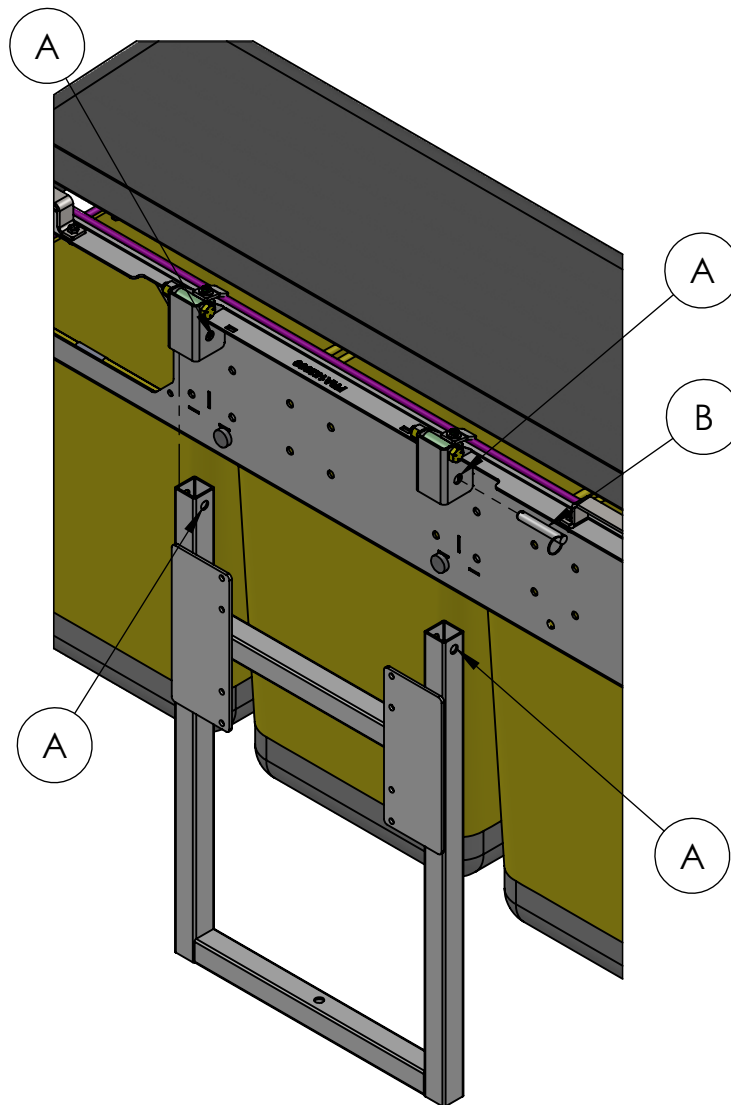
FOR SYSTEMS WITH A CATCHER MOUNT PANEL

1. ATTACH THE LEG SET AND CATCHER MOUNT PANEL AS PER THE SYSTEM INSTALLATION INSTRUCTIONS.
2. ALIGN THE HOLES IN THE CUPS ON THE 3-BAG UNIT WITH THE HOLES IN THE UPRIGHTS OF THE CATCHER MOUNT PANEL (A).
3. USE THE SUPPLIED DETENT PINS (B) AND SECURE BOTH OF THE CUPS ON THE 3-BAG UNIT TO THE CATCHER MOUNT PANEL UPRIGHTS.
4. MAKE SURE THE DETENT PIN HAS CLEARED ALL FOUR HOLES AND THE BALL ON THE END IS VISIBLE.

DO NOT USE WITHOUT INSTALLING THE DETENT PINS PROPERLY. FAILURE TO DO SO WILL LEAD TO DAMAGE OF THE MOUNT PANEL AND/OR THE 2-BAG UNIT!

3-BAG CATCHER INSTALLATION

LADDER STYLE

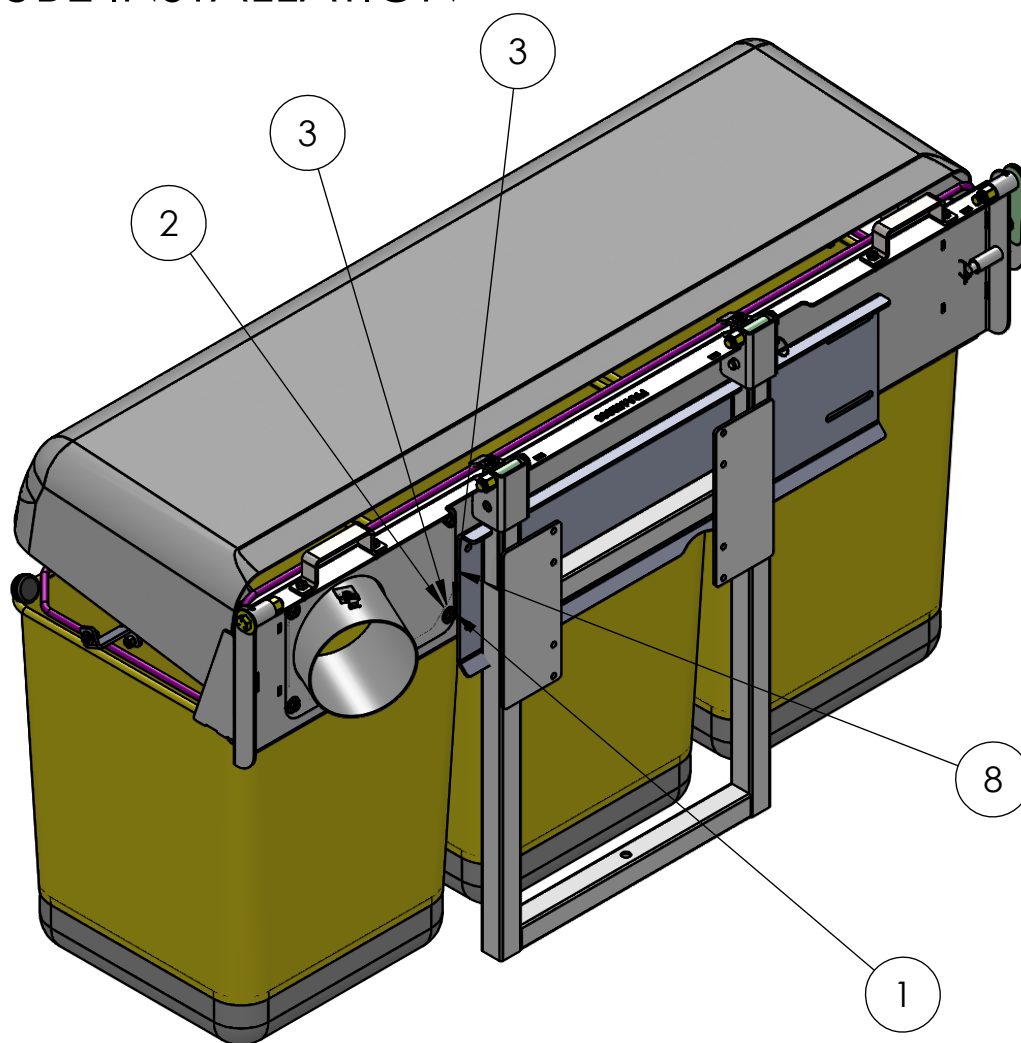


FOR SYSTEMS WITH A LADDER STYLE LEG SET

1. ATTACH THE LEG SET AS PER THE SYSTEM INSTALLATION INSTRUCTIONS.
2. ALIGN THE HOLES IN THE CUPS ON THE 3-BAG UNIT WITH THE HOLES IN THE UPRIGHTS OF THE LEG SET (A).
3. USE THE SUPPLIED DETENT PINS (B) AND SECURE BOTH OF THE CUPS ON THE 3-BAG UNIT TO THE LEG SET UPRIGHTS.
4. MAKE SURE THE DETENT PIN HAS CLEARED ALL FOUR HOLES AND THE BALL ON THE END IS VISIBLE.

DO NOT USE WITHOUT INSTALLING THE DETENT PINS PROPERLY. FAILURE TO DO SO WILL LEAD TO DAMAGE OF THE LEG SET AND/OR THE 2-BAG UNIT!

INLET TUBE INSTALLATION

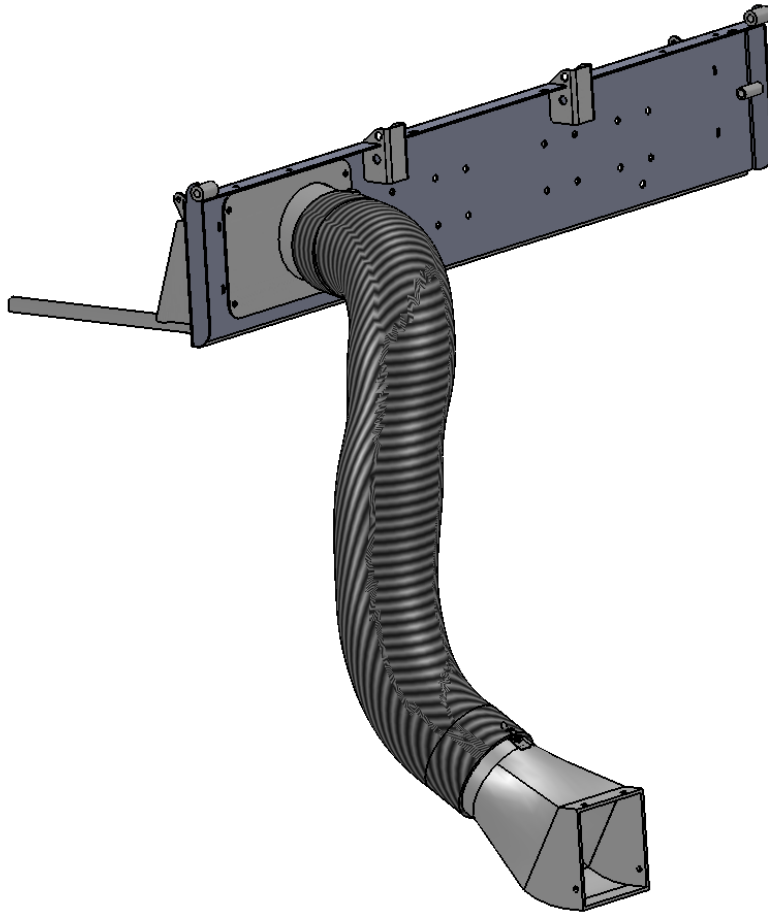


1. ONCE THE 3-BAG UNIT IS SECURED TO THE MOWER ORIENT THE INLET TUBE AS SHOWN.
2. ALIGN THE HOLES OF THE INLET TUBE TO THE OPENING HOLE PATTERN ON THE 3-BAG UNIT.
3. USING THE SUPPLIED HARDWARE SECURE THE INLET TUBE TO THE 3-BAG UNIT.

ITEM NO.	PART NUMBER	DESCRIPTION	QTY.
1	FAS150799	5/16-18 x .75 CAP SCREW	4
2	FAS150801	5/16-18 NYLON INSERT NUT	4
3	FAS150812	5/16 FLAT WASHER	8
4	FAS150865	#10-24 X 1/2 PAN HEAD SCREW	1
5	FAS150866	#10-24 NYLON INSERT NUT	1
6	FAS150867	#10 FENDER WASHER	1
7	FAS150875	SPRING CLIP	1
8	FRA150274	6" INLET TUBE, SHORT	1
9	FRA152003	3-BAG CATCHER SUPPORT	1

SPRING CLIP AND HARDWARE WILL BE INSTALLED ON THE INLET TUBE PRIOR TO SHIPMENT.

Hose Trimming Information

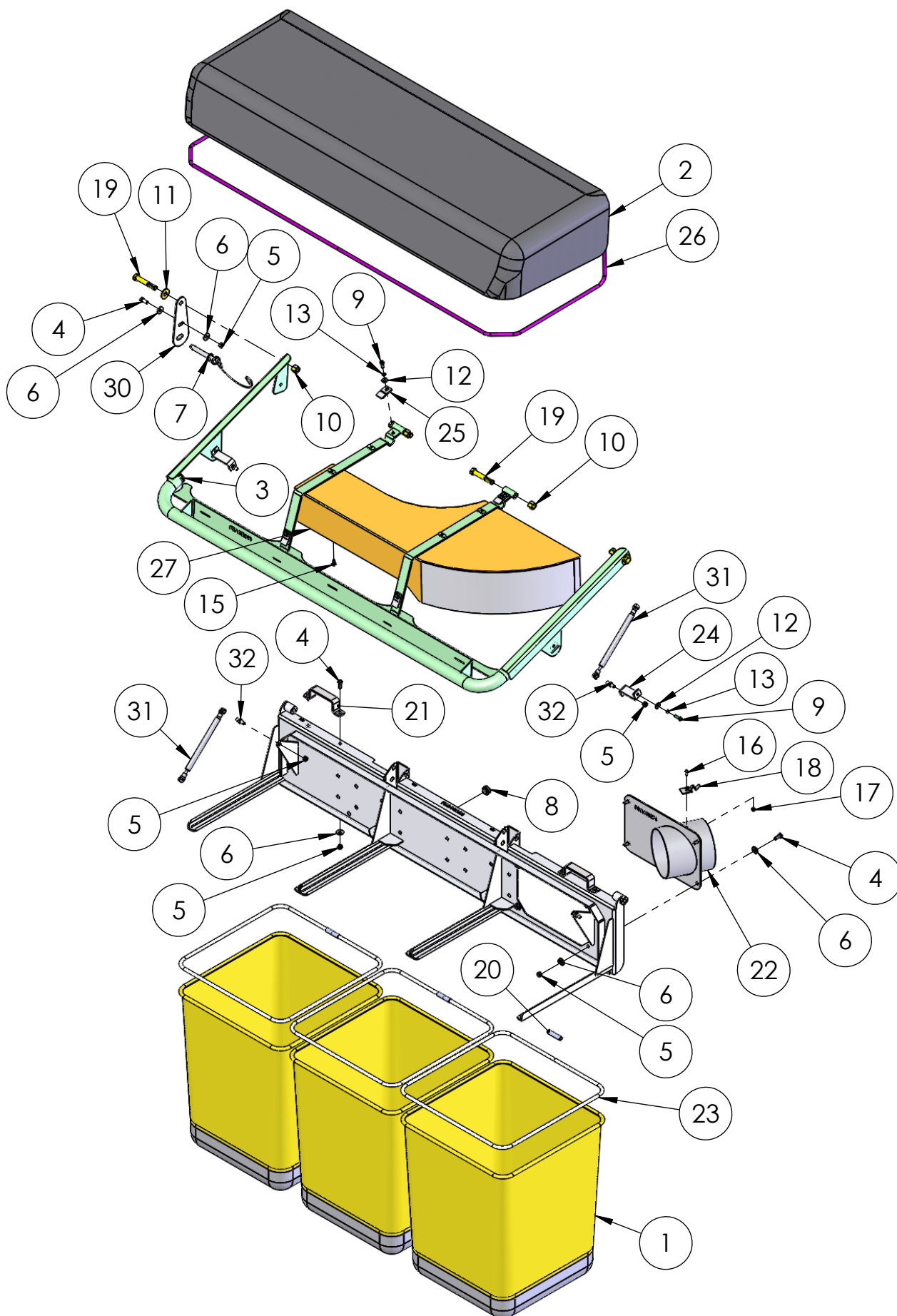


Trimming to Length Instructions:

1. With Rear Catcher and Blower installed, lower deck to its '**LOWEST**' position.
2. For easier initial installation, spray inside opening of hose with Lemon Furniture Polish.
3. Install hose onto inlet tube of catcher to reach retaining clip.
4. Close clip over spiral bead of the hose.
5. Position hose along outside of the Transition Chute of Blower.
6. Note approximate length of hose at retaining clip and add 2 inches.
7. Cut spiral bead on hose with side cutters and trim hose to length.
8. Install the hose onto the Transition Chute of the Blower to reach the clip.
9. Close clip over spiral bead of the hose.
10. The hose should make a gentle curve from the blower to the catcher.
11. If necessary to further shorten hose, trim the hose by removing one spiral at a time.

Caution: Do Not Trim Hose Too Short!!!

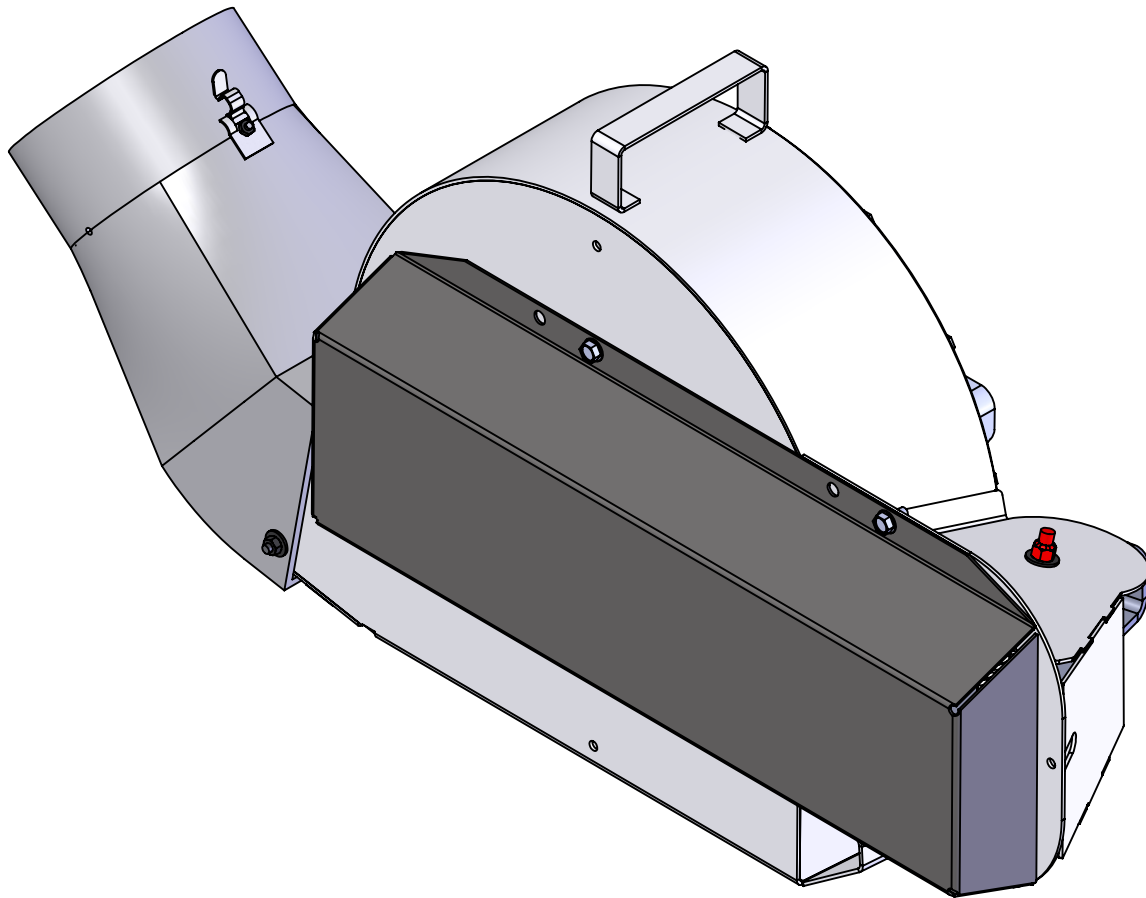
3-BAG CATCHER PARTS LIST



3-BAG CATCHER PARTS LIST

ITEM NO.	PART NUMBER	DESCRIPTION	QTY.
1	305 003 121	CATCHER BAG, COMMERCIAL	3
2	305 004 116	GENERIC AIR DOME (3-BAG) EXTENDED	1
3	FAS150142	1.5" HOLE PLUG, PLASTIC	2
4	FAS150799	CAP SCREW 5/16-18 x .75	9
5	FAS150801	5/16-18 Nylon Insert Nut	13
6	FAS150812	5/16" Flat Washer	14
7	FAS150817	1/2 DETENT PIN 2.5" LONG	1
8	FAS150818	RUBBER BUMPER	2
9	FAS150819	CAP SCREW 1/4-20 x .75	6
10	FAS150824	1/2-13 Nylon Insert Nut	4
11	FAS150825	1/2" Flat Washer	2
12	FAS150827	1/4" USS WASHER	6
13	FAS150828	1/4" Lockwasher	6
14	FAS150845	CS 1/2-13 X 2.5 G5	1
15	FAS150861	1/4-20 X 1/2 G5	3
16	FAS150865	#10 x 1/2" SCREW	1
17	FAS150866	#10-24 Nylon Insert Nut	1
18	FAS150875	SPRING CLIP	1
19	FAS150888	CS 1/2-13 X 3 G5	3
20	FAS150920	TUBE, PLASTIC 1/2" OD x 3/8 ID	3
21	FRA150101	Bag Handle	2
22	FRA150274	6" INLET TUBE, SHORT	1
23	FRA150408	BAG FRAME	3
24	FRA150423	Gas Cylinder Mount	2
25	FRA150451	BRACKET MOUNT	4
26	FRA150452	AIR DOME FRAME (3-BAG)	1
27	FRA150462	3-BAG Raised Deflector	1
28	FRA152000	3-BAG SUPPORT MOUNT	1
29	FRA152010	3 Bag Raised Cap Support	1
30	FRA153900	DFS Adjustable Lock Plate	1
31	OTH150031	GAS CYLINDER, 6x15 LOM 375 EXT	2
32	OTH150032	BALL JOINT	4

18" VERTICAL BLOWER INSTALLATION AND OPERATING INSTRUCTIONS



ADVICE AND CAUTIONS ON THE USE OF GRASS AND LEAF COLLECTION SYSTEMS

Grass and Leaf collection systems are designed for many brands of Zero Turn Mowers, Compact Tractors, and Walk Behind Lawn Mowers. These products are tested under a multiplicity of conditions. They are not guaranteed to perform optimally under any and all conditions!

Depending on the time of year, makeup of the grass, moisture, depth of cut, speed of mowing or cleaning and the horsepower available, the performance of your grass catcher will vary. Catchers perform well in most situations but not all! During periods of lush grass, wet grass, leaves or other factors, you may have to adjust your mowing to fit the conditions. The use of special hi-lift blades is also recommended in most conditions. During leaf cleanup some systems work better with mulching blades. Check your system to assure proper grass catcher system installation.

Clogging of catchers, although infrequent, can happen in any condition. If this should occur, all hoses are secured with a quick clip attachment which allows clearing a clog quickly and without tools.

Machines are equipped with many different brands of horsepower rated engines and various hydraulic systems. There is, for many mowers, a point where the weight of the mower, operator, catcher system and the clippings or leaves can start to effect the operation of the machine and life of drive components. This is particularly true if mowing on non-level terrain. If this should occur you will have to compensate by decreasing depth of cut, not filling the bags or hopper to full capacity or slowing the speed of mowing.

Products described in this publication are designed and manufactured so that they will work on the mowers/tractors described.

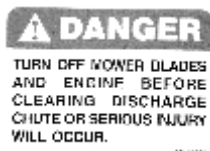
Safety Label Information



Warning: Thrown Objects
Keep area clear of people and pets
Remove objects blade may throw
Stop blades when crossing gravel areas



Danger: Rotating Blades
Keep hands and feet away
Stop engine and let blades stop
before clearing clog



Danger:
Turn off mower blades and engine
before clearing discharge chute or
serious injury will occur

Safety Information

NOTICE!!!

Unauthorized modifications may present extreme safety hazards to operators and bystanders and could also result in product damage.

OPERATING SAFELY

Disengage the PTO whenever the deck is raised and in transport mode.

Do not operate the machine without either the discharge chute or the grass catcher fully installed.

Stop the engine, disengage the PTO and wait until the blades quit rotating before removing the grass catcher.

Stop the engine, disengage the PTO, and remove the key when stopping operation to clear blockages, unclog, inspect the attachment, or do maintenance or repair.

If the machine begins to vibrate abnormally or make abnormal sounds, stop the engine and disengage the PTO. Inspect the attachment and have necessary repairs performed by a qualified technician.

Use extra care with grass catchers. These attachments can change the stability of the machine and alter the stability during operation. Read and understand all operation and safety precautions associated with operating your machine on slopes and in other hazardous conditions. Do not attempt to exceed these recommendations with your grass collection system attached.

Only operate the catcher attachment with all guards fully installed.

Inspect grass catcher components regularly. If worn, damaged or deteriorated, they may expose moving parts or allow objects to be thrown.

Mow only in daylight.

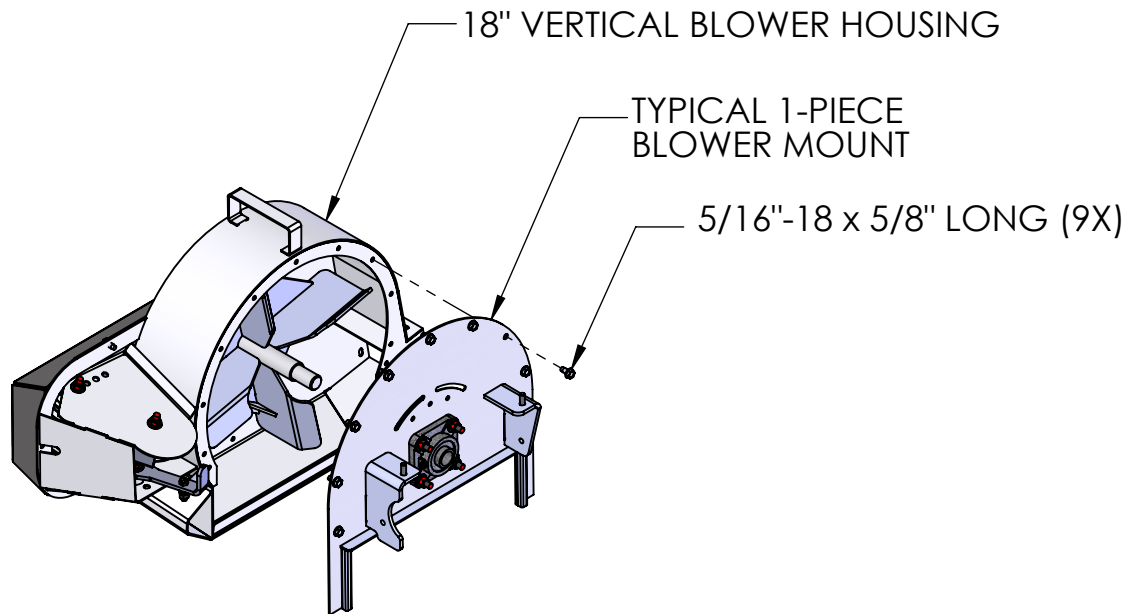
Check operator presence interlock system and brake operation prior to each days use. Adjust or repair any problems before using.

Clear the area to be mowed of objects such as rocks, toys, wire, or other debris that may be picked up or thrown by the catcher.

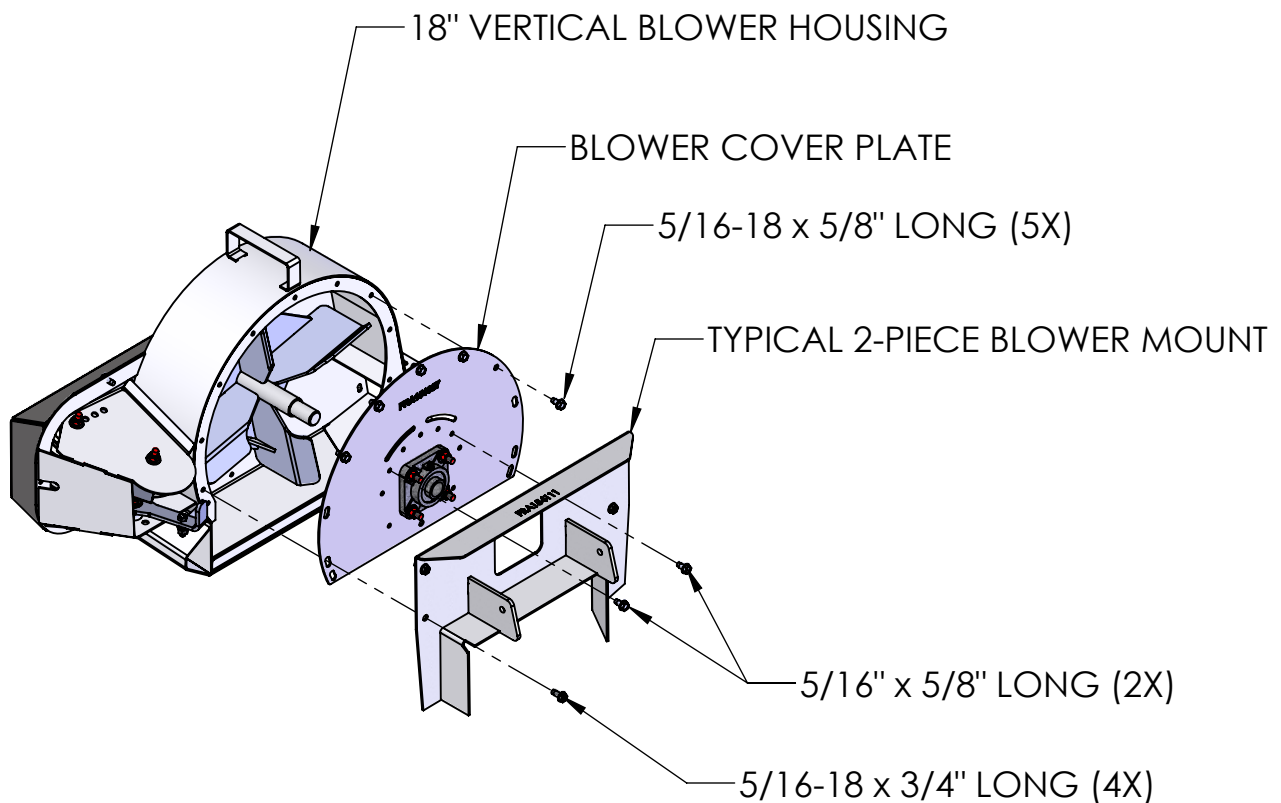
Be sure the area is clear of pets and people, especially young children. Never assume they will remain where you last saw them. Stop the machine if any enter the area.

Evaluate the terrain to determine if the machine can safely perform the job. Remember that slopes and irregular terrain may cause tires to lose traction resulting in loss of control. Use extreme caution on wet grass, as this will increase risk.

18" BLOWER MOUNT VARIATIONS

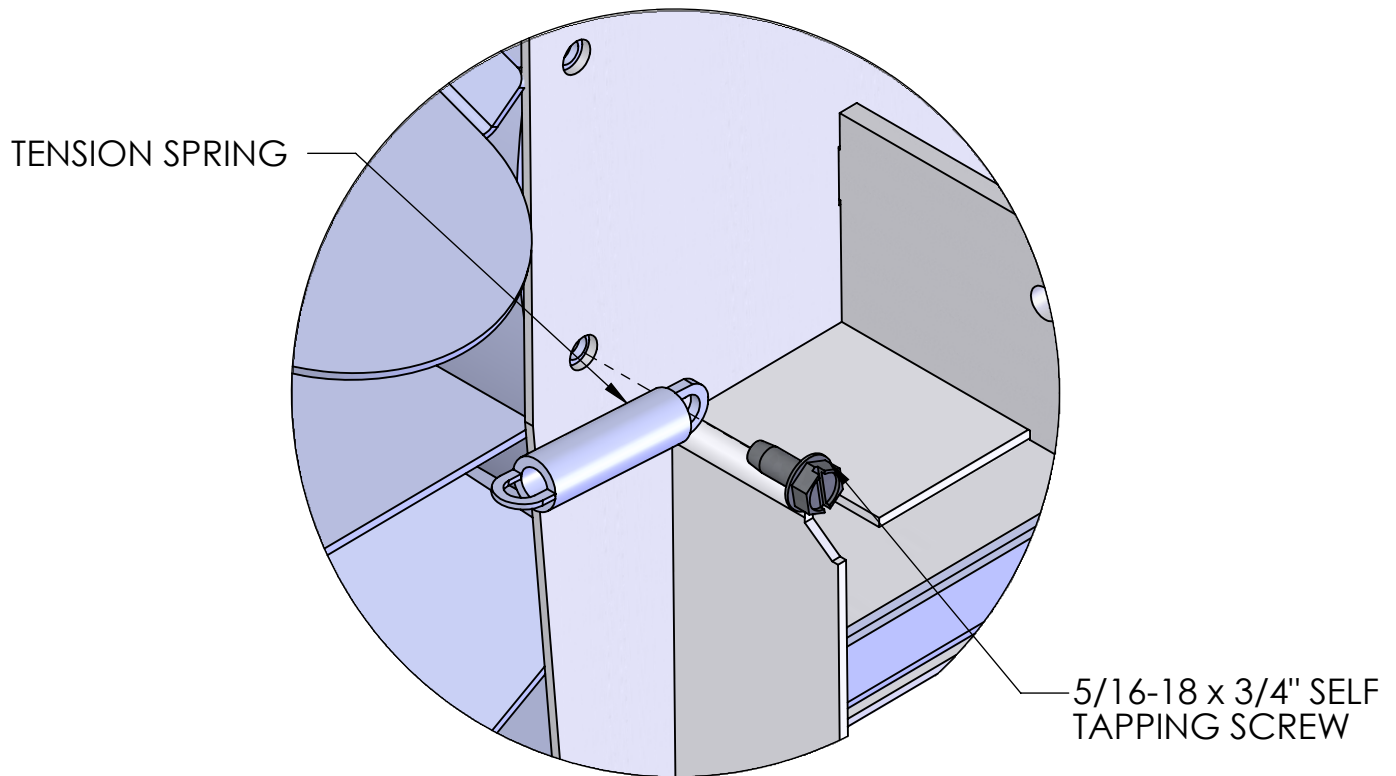


ONE PIECE BLOWER MOUNT DESIGN

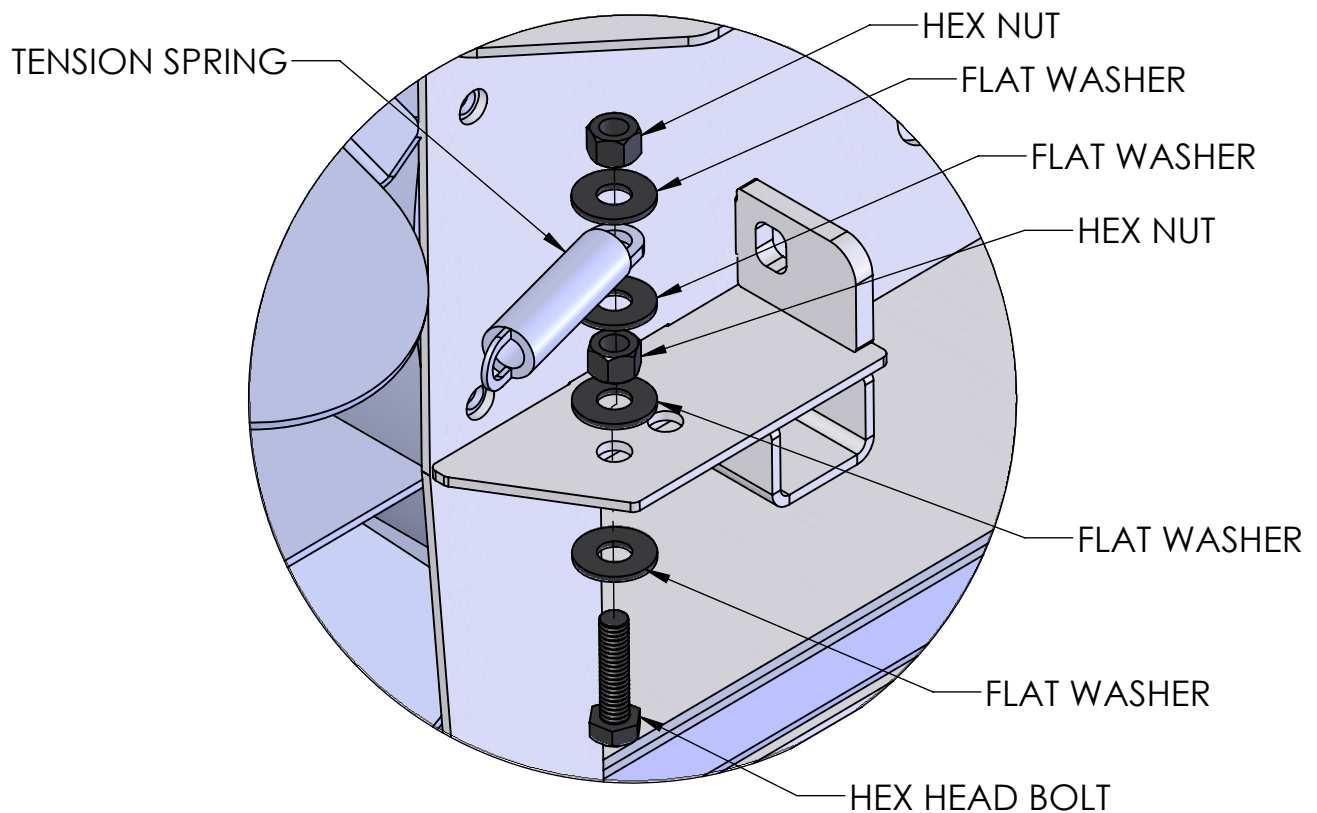


TWO PIECE BLOWER MOUNT DESIGN

18" BLOWER TENSION SPRING ATTACHMENT VARIATIONS

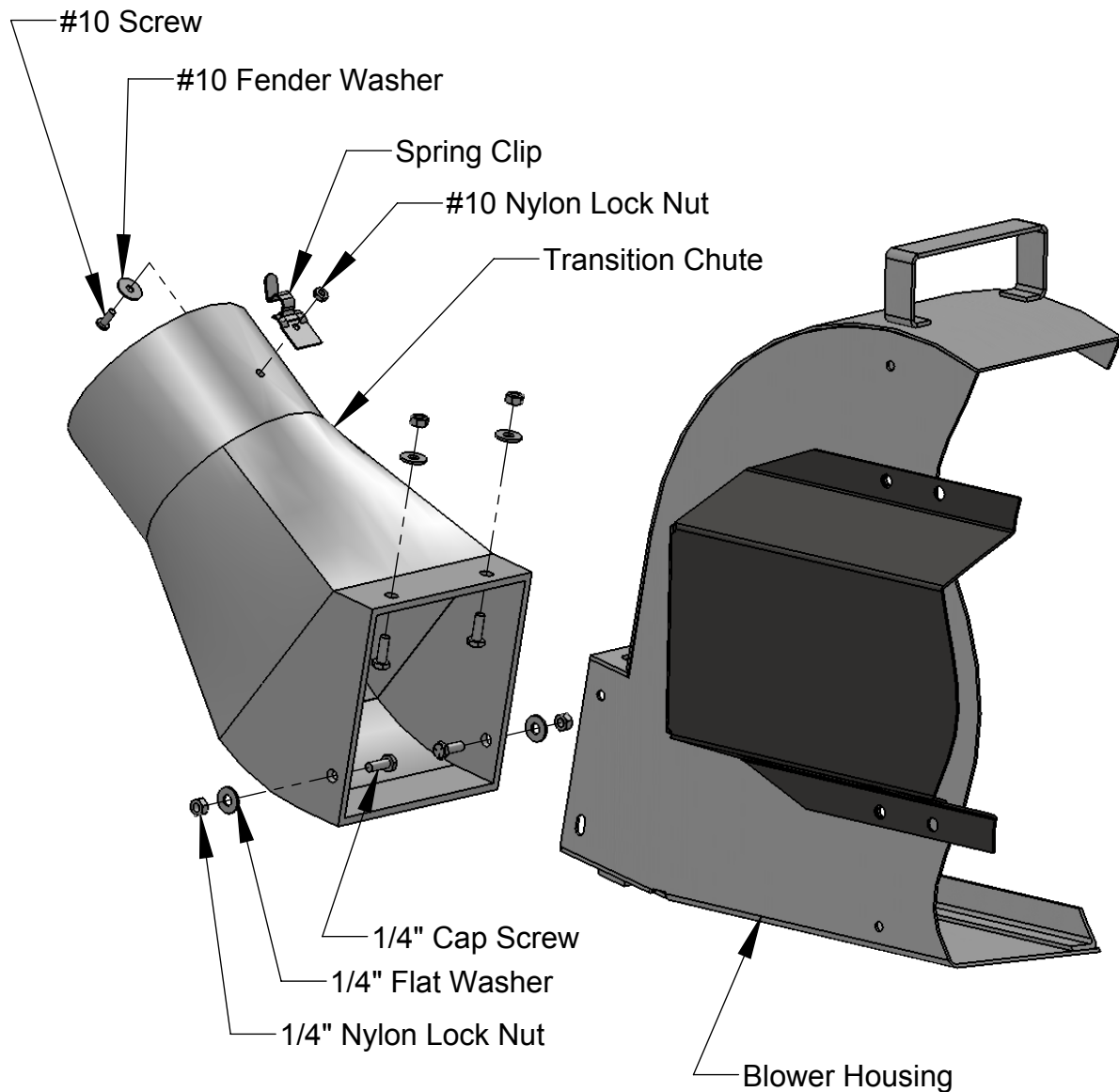


VERSION 1



VERSION 2

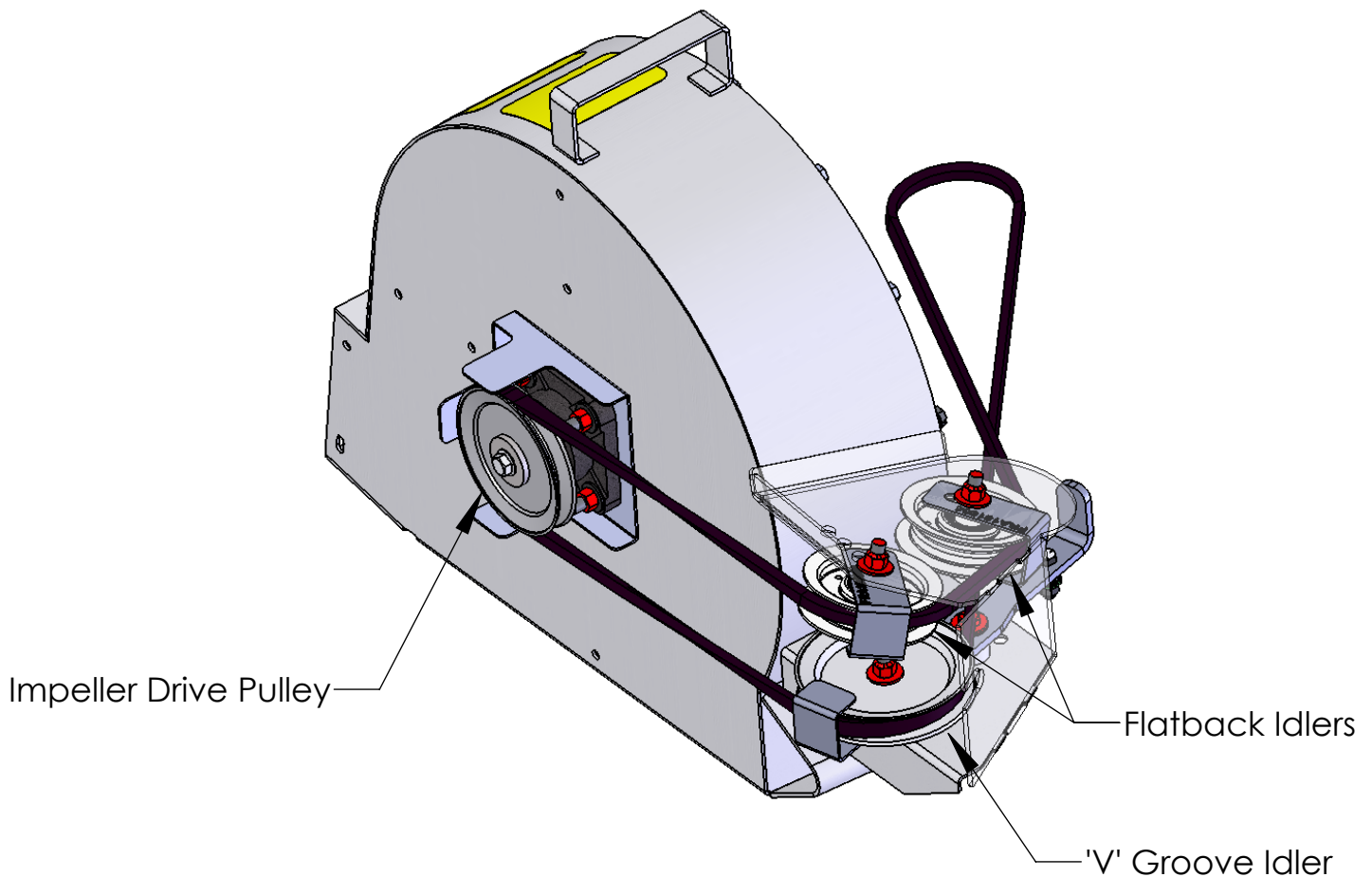
Transition Chute Installation Instructions:



Installation Instructions:

1. Position square opening of Transition Chute over square opening of Blower
2. Install 1/4" Cap Screw with head to inside thru blower and Transition Chute.
3. Secure loosely with Flat Washer and 1/4" Nylon Lock Nut.
4. Repeat procedure for remaining 3 Cap Screws, Flat Washers and Nuts.
5. Tighten all hardware at this time.

18" Blower Belt Routing and Replacement Instructions



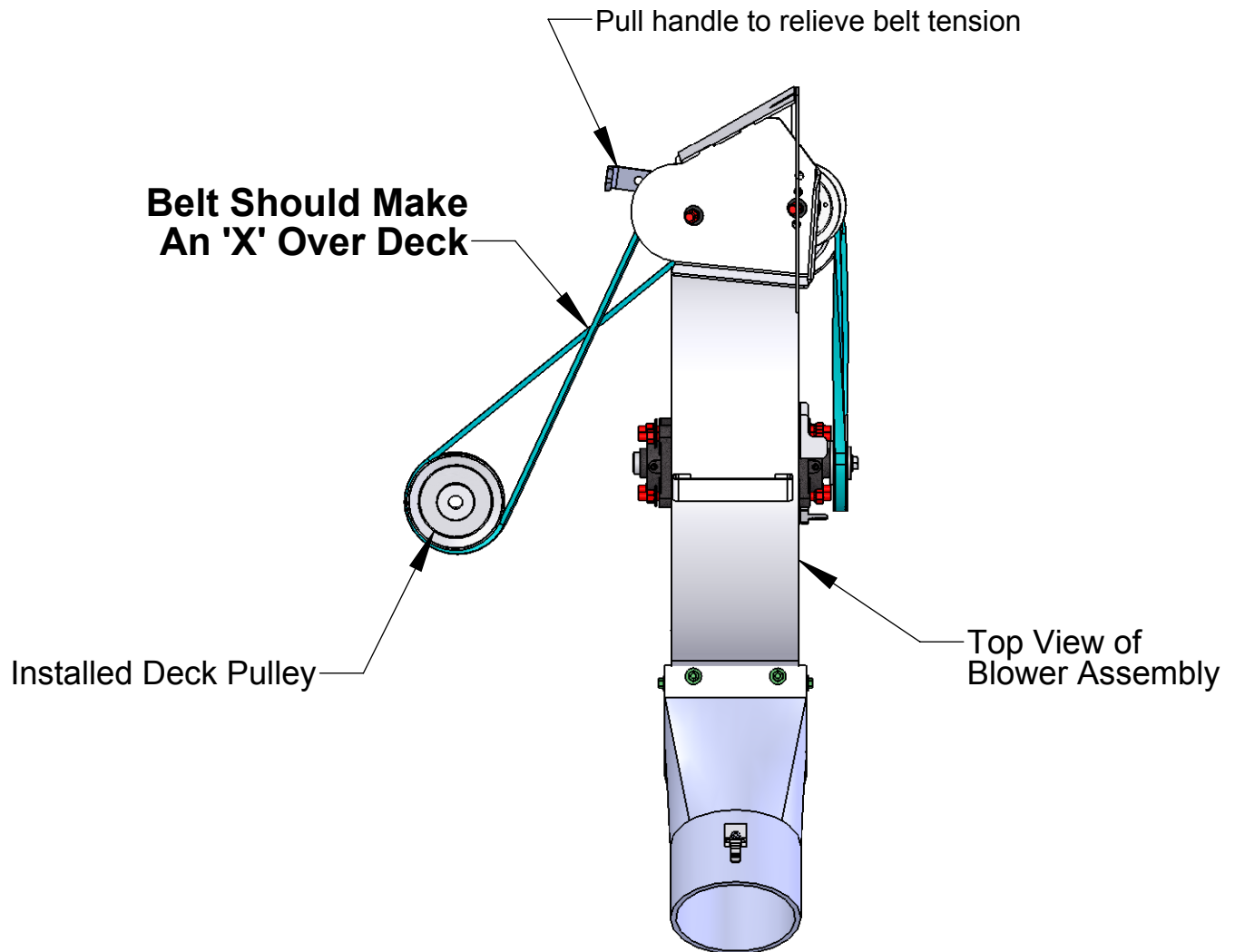
Belt Removal:

1. Remove four Blower Pulley Cover Screws.
2. Remove Blower Pulley Cover.
3. Loosen Flatback Idler Bolts, no need to remove completely.
4. Loosen 'V' Groove Idler Bolt, no need to remove completely.
5. Remove Belt from under Belt Guide on Impeller Drive Pulley.
6. Remove Belt from Flatback Idlers.
7. Remove Belt from the V Groove Pulley.
8. Pull belt from Blower Assembly.

Belt Replacement:

1. Install Belt under Belt Guide on the Impeller Drive Pulley.
2. Feed remainder of belt between Top Idlers and Bottom Idler and out of opposite side of Blower Assembly.
3. Install Belt into groove of 'V' Groove Idler.
4. Tighten 'V' Groove Idler Bolt to maintain belt position.
5. Twist Belt clockwise a quarter turn to position backside of Belt to ride on the Flatback Idlers.
6. Tighten Flatback Idler Bolts to maintain belt position.
7. Pull Belt slack to mower side of Blower and recheck belt position..
8. Replace Blower Pulley Cover.

Belt Routing on Mower Deck Pulley



Belt Installation onto Mower Deck

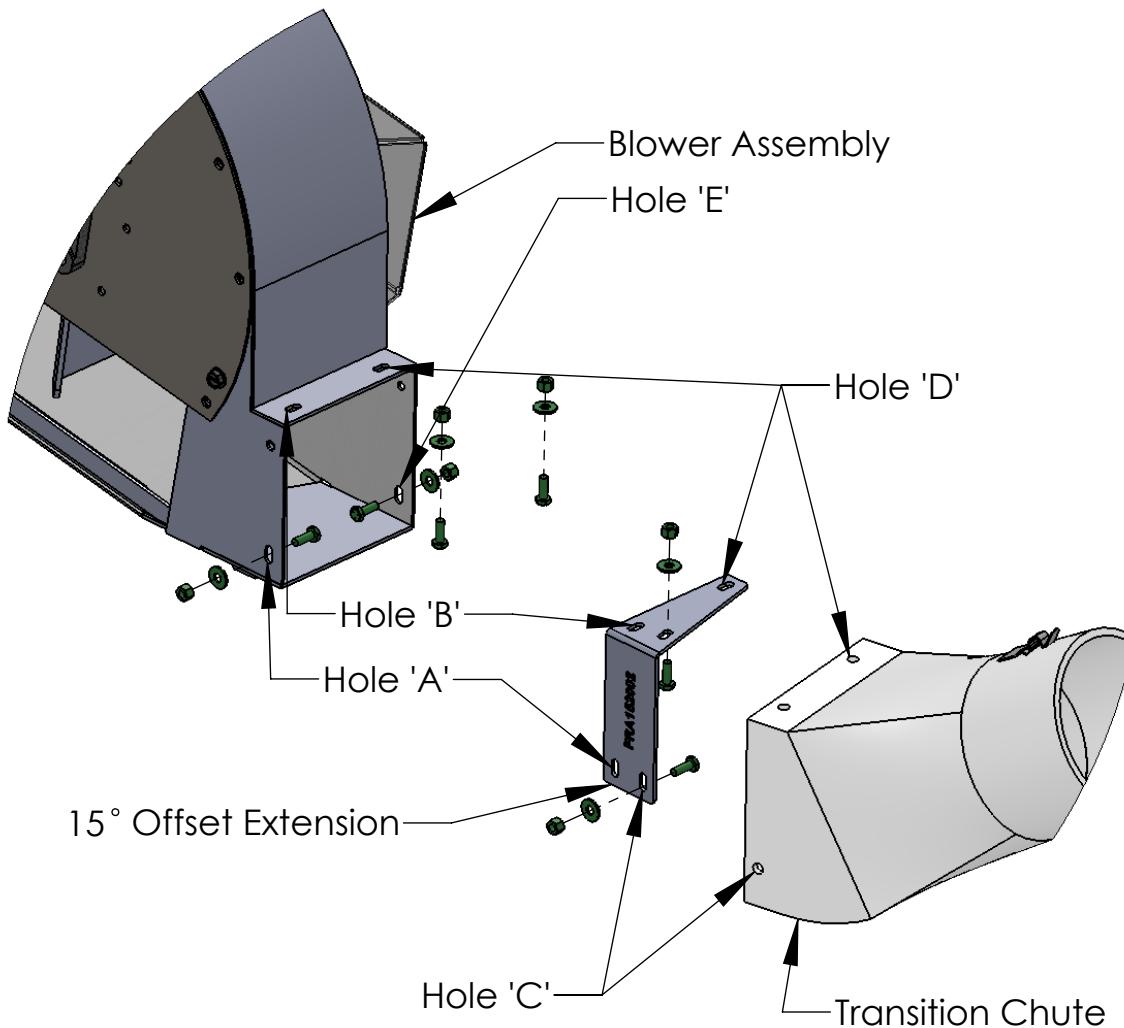
1. Install Blower Assembly onto Mower Deck
2. Pull on handle on front of Blower Assembly to extend Belt.
3. With handle pulled back, place belt onto Deck Pulley
4. Make sure Belt makes an 'X' over the Deck.
5. Release handle to tension the Belt.
6. Install Deck Pulley Cover.

Belt Fit Tips:

The system is designed to have a loose fitting belt. it is normal to have the 3-4 inches of movement in the belt with the tensioner engaged. Make sure the belt makes an "X", if it doesnt the system will not collect clippings.

Chute Offset Extension Installation

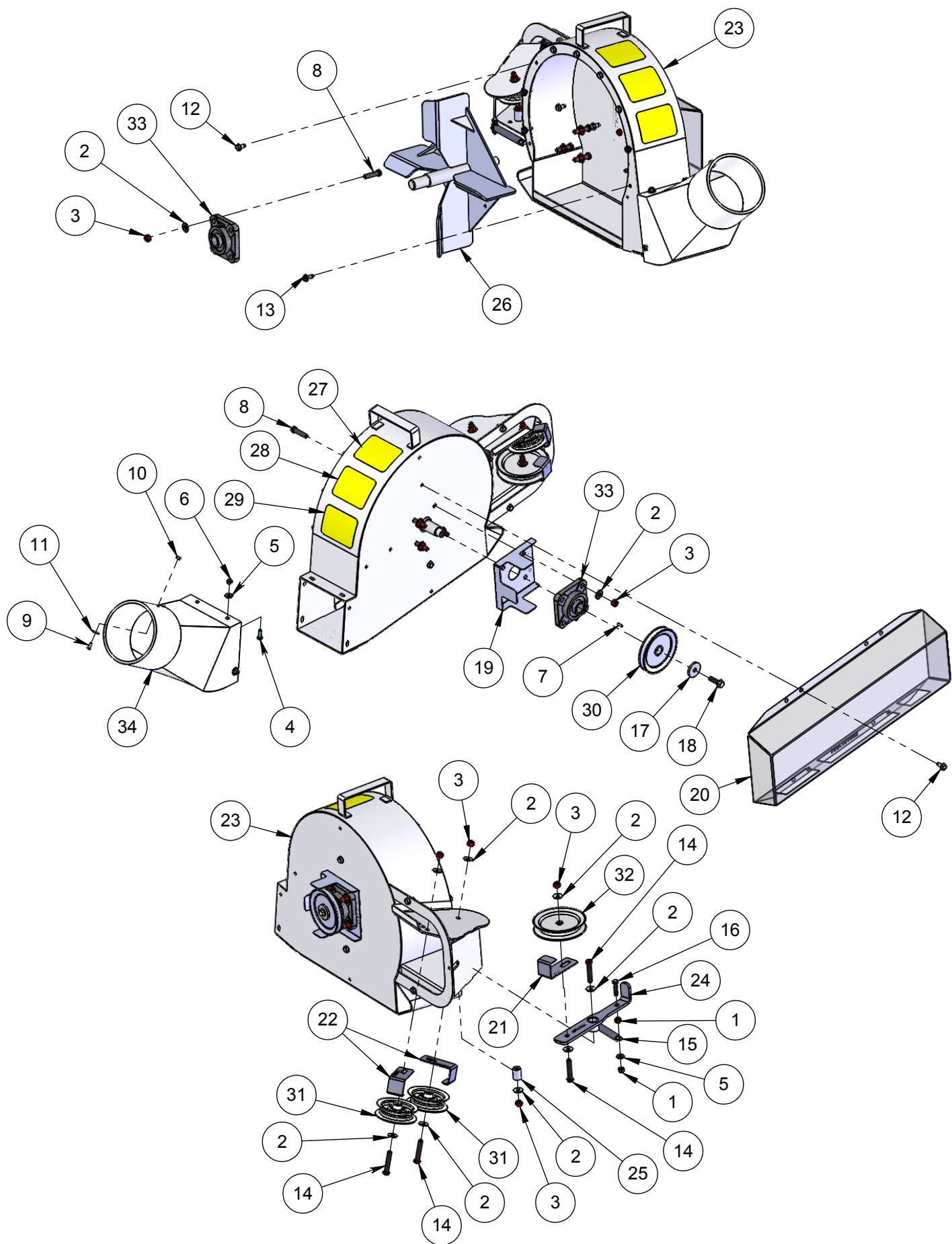
THE INSTALLATION OF THIS EXTENSION IS AN OPTIONAL STEP THAT IS NOT REQUIRED FOR ALL SYSTEMS. THE FOLLOWING STEPS ONLY NEED TO BE FOLLOWED FOR SYSTEMS THAT COME EQUIPPED WITH AN OFFSET EXTENSION.



Installation Instructions:

1. Orient Offset Extension as shown inside Blower Housing opening.
2. Install 1/4" Cap Screw (Head to Inside of Blower) thru Hole 'A' in Extension and Blower Housing.
3. Secure loosely with 1/4" Flat Washer and 1/4" Nylon Lock Nut.
4. Install 1/4" Cap Screw (Head to Inside of Blower) thru Hole 'B' in Extension and Blower Housing.
5. Secure loosely with 1/4" Flat Washer and 1/4" Nylon Lock Nut.
6. Position Chute over Extension and align holes
7. Install 1/4" Cap Screw (Head to Inside) thru Hole 'C' in Extension and Chute.
8. Secure loosely with 1/4" Flat Washer and 1/4" Nylon Lock Nut.
9. Install 1/4" Cap Screw (Head to Inside of Blower) thru Hole 'D' in Extension, Blower & Chute.
10. Secure loosely with 1/4" Flat Washer and 1/4" Nylon Lock Nut.
11. Install 1/4" Cap Screw (Head to Inside of Blower) thru Hole 'E' in Blower & Chute.
12. Secure loosely with 1/4" Flat Washer and 1/4" Nylon Lock Nut.
13. Tighten all hardware at this time.

18" Blower Parts List



18" Blower Parts List

ITEM NO.	PART NUMBER	Description	QTY
1	FAS150801	5/16-18 Nylon Insert Nut	2
2	FAS150812	5/16" Flat Washer	16
3	FAS150816	3/8-16 Nylon Insert Nut	12
4	FAS150819	CAP SCREW 1/4-20 x .75	4
5	FAS150827	1/4" USS WASHER	5
6	FAS150850	1/4-20 Nylon Insert Nut	4
7	FAS150854	KEY 3/16 SQ x .50	1
8	FAS150858	CAP SCREW 3/8-16 x 1.50	8
9	FAS150865	#10 x 1/2" SCREW	1
10	FAS150866	#10-24 Nylon Insert Nut	1
11	FAS150867	#10 FENDER WASHER	1
12	FAS150878	5/16 x 5/8" SELF TAP SCREW	11
13	FAS150879	SELF-TAPPING SCREW 5/16 - .750	4
14	FAS150880	CAP SCREW 3/8-16 x 2.00	4
15	FAS150881	BELT DRIVE TENSION SPRING	1
16	FAS150890	CS 5/16-18 X 1 1/4 G5	1
17	FAS150933	FLAT WASHER, .39 ID x 1.5 OD x .188", YZ	1
18	FAS150934	CAP SCREW SERRATED FLANGE 3/8-16 x 1.25	1
19	FRA151001	DRIVEN BELT GUIDE	1
20	FRA151002	PULLEY / BELT COVER	1
21	FRA151003	Large Idler Belt Guide	1
22	FRA151004	BELT GUIDE (SMALL IDLER)	2
23	FRA151006	Vertical Blower Housing	1
24	FRA151008	IDLER W/A	1
25	FRA151009	IDLER BUSHING	1
26	FRA151010	18" BENT BLADE IMPELLER	1
27	LAB000006	THROWN OBJECT	1
28	LAB000007	ROTATING BLADES	1
29	LAB000008	TURN OFF MOWER	1
30	OTH150041	PULLEY, 4 1/2" A, 3/4" ID	1
31	OTH150053	IDLER PULLEY, 3" HIGH FLANGE, 3/8" ID	2
32	OTH150054	INSIDE IDLER	1
33	OTH150055	SQT PILLOWBLOCK BRG 1.0" I.D.	2
34	OTH150056	Transition Chute - Revised	1