



ACE SOUTHERN

Surgical Solutions

REGENERATIVE & BONE GRAFTING

PRODUCTS CATALOG 2023



FORMING AN ALLIANCE

Rewarding Loyalty



ALLIANCE PROGRAM

Introducing the ACE SOUTHERN Alliance Program (ASAP)

When you create an alliance with **ACE SOUTHERN** you have a committed partner in your success. Part of that commitment is to reward you **for your loyalty with significant savings on every dollar you spend.**

As an ASAP Qualified Customer, you will benefit from savings and special promotions across all the products **ACE SOUTHERN** offers to help your practice prosper.

	Premier \$15,000 Annual Spend	Premier Plus \$25,000 Annual Spend*
5-10% savings on all Rx, Supplies and Equipment	5%	10%
10% savings on all Instruments	10%	10%
15-20% savings on Bone Grafting Materials and Implants	15-20%	15-20%

**AAOMS/AAP members only*

Become an ASAP Member by Enrolling Today • acesouthern.com/ASAP

I'm ready to buy.
Which Price Tier Column Do I Use?

Regular Price	Member Price	Premier Price	Premier+ Price
Most customers fall into this category. It's not "suggested retail", but reflects the strong buying power of ACE SOUTHERN , which we pass along to you as everyday low prices.	In partnership with the AAOMS and AAP societies, their members are given a special 5% discount on general merchandise, including Rx, supplies and equipment.	As shown above, enrolled members who have met the required annual spend of \$15,000 are qualified to receive the Premier Discount.	As a special reward for our enrolled society members , once they have met the required annual spend of \$25,000 they will receive the Premier+ Discount.

REGENERATIVE AND BONE GRAFTING PRODUCTS



YOUR TRUSTED SOURCE FOR BONE REGENERATION PRODUCTS

ACE SOUTHERN is one of the only dental companies to receive accreditation from the AATB® (American Association of Tissue Banks). This means we operate under stringent guidelines set forth by the AATB to process and provide safe quality human tissue with our flagship alloOss® product portfolio.

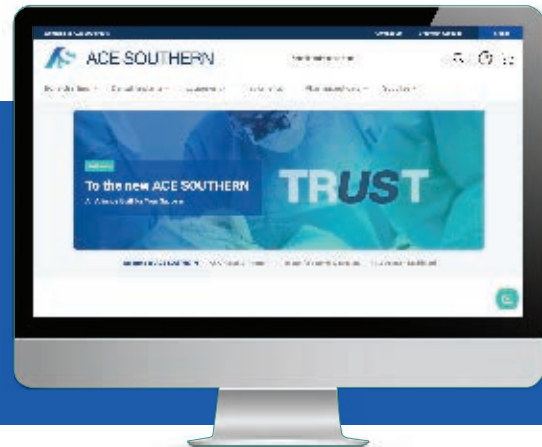
Additionally, ACE SOUTHERN offers a complete portfolio of regenerative products including NuOss® xenograft, an array of resorbable membranes and bone viable matrix products.

TABLE OF CONTENTS

ALLOGRAFTS 2
XENOGRAFTS 10
SYNTHETICS 14
MEMBRANES 16
WOUND HEALING 22
FIXATION 24
INSTRUMENTS AND KITS 65
BONE HARVESTING 56
SUTURES 60
INDEX 64
TERMS AND CONDITIONS 65

BECAUSE WE JUST CAN'T FIT EVERYTHING INTO THIS CATALOG!

VISIT ACESOUTHERN.COM TODAY



SOCIETY MEMBERS SAVE 5% ON RX, SUPPLIES AND EQUIPMENT

USE THE SECOND PRICE COLUMN





ALLOGRAFTS



alloOss ALLOGRAFT PARTICULATE AND BLOCK

alloOss Allograft is offered in particulate and block. alloOss is a safe, predictable and effective solution for providing a scaffolding for cell ingrowth and promoting the growth of new bone.

Natural Allograft Bone

alloOss mineralized Allograft Particulates and Blocks preserve natural collagen and minerals with the bony structure of allograft. The existence of these natural minerals and collagen facilitate remodeling of the host bone suitable for implantation. alloOss products are designed to promote new bone formation.

Safe and Effective

These products have been processed and sterilized to the highest standards set forth by the American Association of Tissue Banks (AATB®) and the U.S. Food and Drug Administration (FDA) regulations. alloOss allograft is obtained and processed in conjunction with AATB accredited tissue banks.

Functional Quality Comparison: Cancellous and Cortical

Particulate Qualities	Cancellous	Cortical
Osteoconductive Function	★ ★ ★	★ ★
Space Maintenance	★ ★	★ ★ ★
Density	★ ★	★ ★ ★
Volume Enhancement	★ ★	★ ★ ★

Cleansing Process for alloOss



Phase 1: Stringent screening procedures for donor selection.



Phase 2: Initial physical inspection and debridement to eliminate substandard tissue and aseptic placement in canisters, reducing risk of tissue contamination. Tissue is processed via minimal manipulation in cGTP conditions in ISO 5 (Class 100) clean rooms using procedures and screening criteria that meet the requirements of the AATB.



Phase 3: Cleansing reaches deep within the tissues with a process that sustains consistency. The process, which uses mechanical energy and rotation, is customized based on specific tissue type and weight. Microbiological testing is performed before and after processing to ensure safety of the final product.



Phase 4: Low dose low temperature irradiation provides the tissue with a Sterility Assurance Level (SAL) of 10-6 without compromising the mechanical integrity of the allograft tissue.



Phase 5: Full water immersion extraction, as opposed to batch swab, is taken for increased accuracy of microbial presence reading.

alloOss® is a registered trademark of ACE Surgical.

AATB® is a registered service mark of the American Association of Tissue Banks.

alloOss
MINERALIZED PARTICULATE

alloOss Allograft Particulates offer the structural strength required to maintain space and volume during the remodeling phase. Used alone or as a composite graft, alloOss Particulates are an effective alternative to intraoral graft harvesting.

- Provides scaffold for cell ingrowth
- Remodels completely
- Predictable Guided Bone Regeneration
- Stabilizes implants after 4-6 months
- Fills voids and extensive bone defects
- Regeneration of periodontal defects



Mineralized Cancellous Particulate

01107001	250-1,000 mic.	0.5cc	\$101.79	\$101.79	\$81.43	\$81.43
01107002	250-1,000 mic.	1.0cc	\$132.79	\$132.79	\$106.23	\$106.23
01107003	250-1,000 mic.	2.0cc	\$212.99	\$212.99	\$170.39	\$170.39
01107101	1,000-2,000 mic.	0.5cc	\$101.79	\$101.79	\$81.43	\$81.43
01107102	1,000-2,000 mic.	1.0cc	\$132.79	\$132.79	\$106.23	\$106.23
01107103	1,000-2,000 mic.	2.0cc	\$212.99	\$212.99	\$170.39	\$170.39

Mineralized Cortical Particulate

01160001	250-1,000 mic.	0.5cc	\$81.29	\$81.29	\$65.03	\$65.03
01160002	250-1,000 mic.	1.0cc	\$106.99	\$106.99	\$85.59	\$85.59
01160003	250-1,000 mic.	2.0cc	\$170.49	\$170.49	\$136.39	\$136.39
01160101	1,000-2,000 mic.	0.5cc	\$81.29	\$81.29	\$65.03	\$65.03
01160102	1,000-2,000 mic.	1.0cc	\$106.99	\$106.99	\$85.59	\$85.59
01160103	1,000-2,000 mic.	2.0cc	\$170.49	\$170.49	\$136.39	\$136.39

Mineralized 50-50 Cortico/Cancellous Particulate

01104000	250-1,000 mic.	0.25cc	\$74.99	\$74.99	\$59.99	\$59.99
01104001	250-1,000 mic.	0.5cc	\$101.79	\$101.79	\$81.43	\$81.43
01104002	250-1,000 mic.	1.0cc	\$132.79	\$132.79	\$106.23	\$106.23
01104003	250-1,000 mic.	2.0cc	\$212.99	\$212.99	\$170.39	\$170.39
01104101	1,000-2,000 mic.	0.5cc	\$101.79	\$101.79	\$81.43	\$81.43
01104102	1,000-2,000 mic.	1.0cc	\$132.79	\$132.79	\$106.23	\$106.23
01104103	1,000-2,000 mic.	2.0cc	\$212.99	\$212.99	\$170.39	\$170.39





ALLOGRAFTS



alloOss NATURAL BLEND PARTICULATE

alloOss Natural Blend is a perfect blend of both cortical and cancellous bone particles, allowing for a more natural mirroring of the composition of human bone; making it a perfect solution for promoting the growth of new bone.



Mineralized Cortico/Cancellous Particulate

01108200	500-1,000 mic.	0.25cc	\$74.99	\$74.99	\$59.99	\$59.99
01108201	500-1,000 mic.	0.5cc	\$101.79	\$101.79	\$81.43	\$81.43
01108202	500-1,000 mic.	1.0cc	\$132.79	\$132.79	\$106.23	\$106.23
01108203	500-1,000 mic.	2.0cc	\$212.99	\$212.99	\$170.39	\$170.39



Mineralized Cortico/Cancellous Particulate In A Syringe

01108204	500-1,000 mic.	0.5cc	\$121.29	\$121.29	\$97.03	\$97.03
01108205	500-1,000 mic.	0.75cc	\$141.79	\$141.79	\$113.43	\$113.43



Mineralized/Demineralized Cortico/Cancellous Particulate

01109200	500-1,000 mic.	0.25cc	\$74.99	\$74.99	\$59.99	\$59.99
01109201	500-1,000 mic.	0.5cc	\$101.79	\$101.79	\$81.43	\$81.43
01109202	500-1,000 mic.	1.0cc	\$132.79	\$132.79	\$106.23	\$106.23
01109203	500-1,000 mic.	2.0cc	\$212.99	\$212.99	\$170.39	\$170.39



alloOss
DEMINERALIZED PARTICULATE

alloOss Demineralized Cortical Bone is appropriate for use in any procedure where bone repair is desired. The process has been validated to maintain osteoinductivity to ensure the highest quality and efficacy for your bone regeneration procedures.

Demineralized Cortical Bone

01170001	125-710 mic.	0.25cc	\$31.99	\$31.99	\$25.59	\$25.59
01170002	125-710 mic.	0.5cc	\$54.49	\$54.49	\$43.59	\$43.59
01170003	125-710 mic.	1.0cc	\$81.79	\$81.79	\$65.43	\$65.43
01170004	125-710 mic.	3.0cc	\$210.99	\$210.99	\$168.79	\$168.79



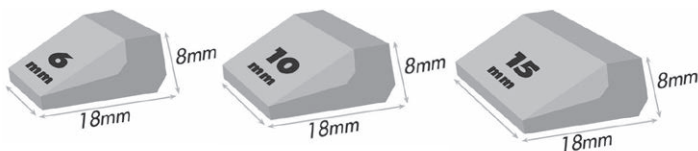
alloOss
BLOCK GRAFT

A cortico/cancellous block for restoring bone volume in severely resorbed ridges without the harvesting of autogenous block graft from the patient.

- Approximate healing in 5-6 months
- Cancellous component for rapid healing and revascularization of host bone to the new graft
- Maintains strength and volume with predictable remodeling
- Cortical component for strength and rigidity of the graft with volume enhancement

Cortico/Cancellous Block Graft

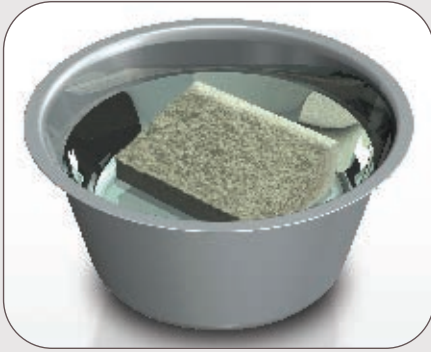
01241006	18 x 6 x 8mm	each	\$627.79	\$627.79	\$502.23	\$502.23
01241010	18 x 10 x 8mm	each	\$728.29	\$728.29	\$582.63	\$582.63
01241015	18 x 15 x 8mm	each	\$815.99	\$815.99	\$652.79	\$652.79



TUTORIALS

HYDRATING ALLOOSS® BLOCK

Pre-soak alloOss Block in 0.9% Sodium Chloride (Sterile Saline)



Prep Time: 30 minutes

- Pour 0.9% Sodium Chloride (Sterile Saline) into a sterilized instrument cup (0531007) halfway or high enough to cover the block.
- Place the alloOss Block into the sterile saline and soak for 30 minutes.

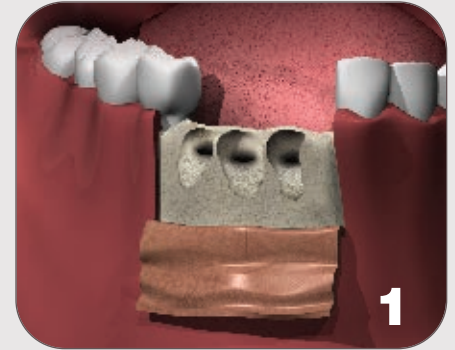
QUICK HYDRATION TECHNIQUE

Using a 20cc Hydrating Syringe and 0.9% Sodium Chloride (Sterile Saline)



Prep Time: 3-5 minutes

1. Remove the plunger from a sterile 20cc syringe (0034302).
2. Place alloOss bone block into syringe.
3. Replace the syringe plunger.
4. Pull the plunger to draw the sterile saline into the syringe, fill halfway. Purge the air out of the syringe.
5. Create pressure by pressing the plunger while the syringe tip is held firmly against the bottom of the bowl, or against a gloved finger. Maintain pressure for approximately 3-5 minutes.
6. Remove the block from the syringe and place it into a bowl of Sodium Chloride until ready to use.



Loss of alveolar bone volume, with buccal wall dehiscence, subsequent to tooth loss.



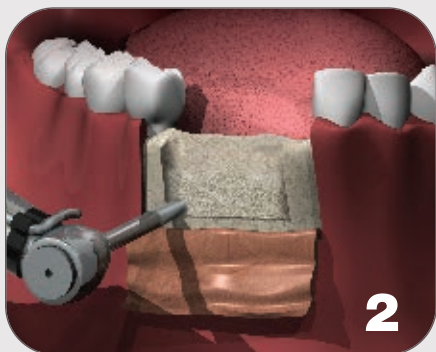
Using a bone holding forceps (9600026 p.35), hold the block with the guide in place and trim the bone graft to its final size. Smooth out any rough edges.



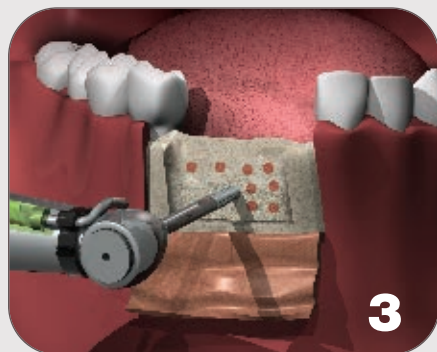
Carefully use the 1.1mm Pilot Twist Drill (4544020 **G** p.26) to create **ONLY** an 0.8mm deep pilot hole into the host bone.

ALVEOLAR AUGMENTATION WITH BUCCAL DEHISCENCE BLOCK GRAFT

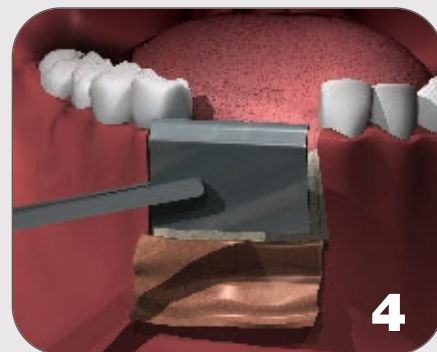
Using alloOss® Allograft Block, ACE Surgical Instruments and TruFIX TruSCREWS



Create inlay in recipient site for future block graft, using fissure or round burs.



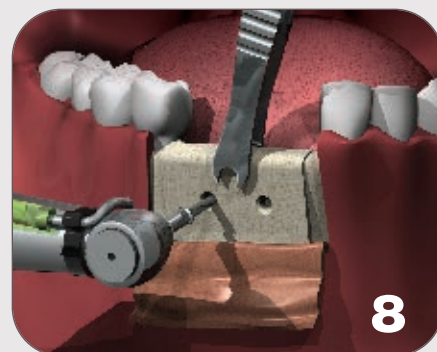
Create bleeding holes of 0.8 to 1.1 mm diameter in floor of inlay preparation.



Make a template of inlay site using titanium or aluminum foil to create outline for graft.



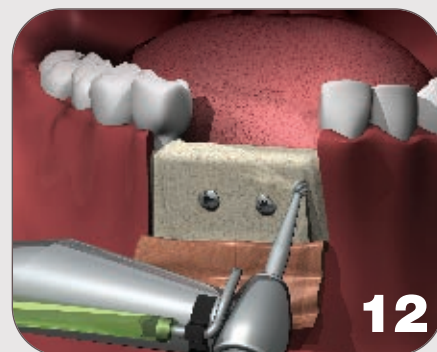
Use the Contra Angle Two-Step Countersink Bur (45440203 **F** p.26) to make the screw access hole through the graft to the 1.6mm diameter portion of the block graft. (See step 7 for a detailed view).



Hold the block graft with the forceps in intimate contact with the inlay recipient site. Use the 1.1 mm Pilot Twist Drill (45440202 **G** p.26) to create a pilot hole in the host bone site. (See step 9 below for a detailed view).



Place the appropriate length, 1.5mm diameter TruFIX TruSCREWS through the graft holes. The screw head should tighten on the graft outer cortex, the screw threads engaging only the recipient site bone. The channel through the graft must NOT be touched by the screw threads (see step 11 for a detailed view).



Care is taken to smooth all sharp edges to avoid tissue dehiscence.

OPTION: Fill in any voids with autogenous bone, NuOss or alloOss® and cover with a resorbable collagen membrane.

The procedures and techniques presented throughout this catalog are intended to provide basic reference only and should not be substituted for the complete surgical procedure being performed by a licensed practitioner. A complete understanding and execution of the techniques and procedures

presented within this catalog are the full responsibility of the licensed practitioner. These procedures and techniques are NOT TO BE SUBSTITUTED for the practitioner's complete knowledge, education, experience or for any instrumentation or product instruction for use.



ALLOGRAFTS

alloOss[®] Plus

bone viable matrix



alloOss PLUS ALLOGRAFT BONE MATRIX

Introducing alloOss[®] Plus

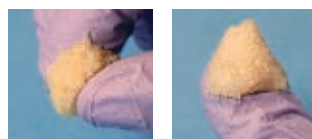
This is a truly exciting addition to the alloOss allograft family. alloOss Plus is a bone viable matrix that is aligned and priced for dental use. It contains a proprietary mix of bone fibers, bone chips and particles that retains its native bone-forming cells¹. alloOss Plus is simple to use, just thaw and go without any decanting. The fibrous structure is what makes this unique product exceptionally pliable and easy to shape and form around defects.

alloOss Plus Contains:¹

- Viable cancellous bone with endogenous bone-forming cells, including osteoblast, osteoprogenitor, and mesenchymal stem cells (MSC).
- Cortical-derived demineralized bone matrix (DBM) fibers and particles.
- Smaller bone chips aligned for dental use.
- Cortical-derived DBM fibers provide better scaffold than DBM particles and prevent less cancellous bone chip migration from implant site.

Handling Characteristics:

- AlloOss Plus Bone Viable Matrix (BVM) fibrous material allows for easy forming around defects.



Safety Profile

- Aseptic tissue processing.
- Antimicrobial treatment of tissue.
- Sterility cultures performed on every lot.
- Selective immunodepletion process.
- Non-immunogenic evidenced by the inhibition proliferation of lymphocytes.¹

Donor Testing

- Hepatitis B Surface Antigen
- Hepatitis B Core Antibody
- Hepatitis C Virus Antibody
- Hepatitis C Nucleic Acid Test
- HIV-1 and 2 Antibody
- HIV-1 Nucleic Acid Test
- HBV NAT
- Syphilis (Treponema Pallidum)

Donor Screening

- Medical and social history evaluation.
- Physical examination.
- Medical record evaluation, including autopsy report (if performed).
- Licensed physician review and release of every donor record.

Quality Assurance

- cGTP compliant according to FDA regulations.
- All applicable state licensure / registrations.
- AATB[®] Accreditation

Packaging and Logistics:

- AlloOss Plus is available in a 1cc or 2cc size. It is provided in a shelf box containing a vial sealed in a sterile pouch, IFU and patient labels.
- AlloOss Plus is stored at -75°C and shipped on dry ice. The product should remain sealed in the shipper until time of use.
- The sealed shippers are validated to maintain appropriate storage temperature for either 6 days (if 3 or 8 units or less are ordered) or for 4 days (if up to 20 units are ordered).
- The product is shipped overnight, please plan on ordering the product to arrive the day before the surgery. Please be mindful of holidays when planning your cases.
- AlloOss Plus can be stored in a cryogenic freezer (-75°C) until the expiration date of the product.

Handling:

- Do not overpack the site. AlloOss Plus can be compressed, but once the pressure is removed, the material will bounce back.
- AlloOss Plus can be thawed in 5-15 minutes at room temperature.
- AlloOss Plus should be used within 2 hours post thaw.
- AlloOss Plus can be used immediately after thawing, no additional wash steps are required.
- AlloOss Plus has no liquid to decant.
- Unlike particulate, alloOss Plus is a cortical fiber-based product, so it cannot easily be mixed with other bone particulate. If multiple bone grafting product are required for a case, we recommend layering the bone grafts.
- May be used with or without a membrane, based on clinical judgment.

alloOss[®] Plus Allograft Bone Matrix

01103001	1cc vial	\$419.99	\$419.99	\$335.99	\$335.99
01103002	2cc vial	\$839.99	\$839.99	\$671.99	\$671.99

alloOss[®] Plus Bone Viable Matrix is manufactured for ACE Surgical Supply Co., Inc. AATB[®] is a registered service mark of the American Association of Tissue Banks.

Footnote References:

¹ Data on file at manufacturer.

* See Instructions For Use (IFU) for full prescribing information.

Important Ordering Details

- Due to the nature of the product, the order and delivery of alloOss Plus needs to be carefully coordinated. alloOss Plus is not available for purchase online. alloOss Plus requires Priority Shipping and Handling, which is in addition to prices shown. Please call for ordering details.

Consider the Benefits of our In-Office CRYOGENIC FREEZER PROGRAM

- Save on alloOss Plus shipping charges
- Maximize treatment planning options
- Safely store **alloOss Plus** for up to 2 years (or until expiration date on product)
- Safely store **OsteoCel Plus** for up to 5 years (or until expiration date on product)
- Fits under counter-tops
- Inquire for complete program details

Freezer Storage Specifications:

Temperature: -50° to -122°F (-45° to -86°C)

Dimensions: 29"h x 20"w x 22"d

Capacity: 1 Cubic Foot Storage

ALLOGRAFTS

OSTEOCEL PLUS CELLULAR ALLOGRAFT BONE MATRIX

Osteocel® Plus mimics the biological profile of autograft. The proprietary processing technology used to produce Osteocel® Plus results in a viable bone matrix that preserves the native Mesenchymal Stem Cells (MSCs) and Osteoprogenitors found in marrow-rich bone. It is the first product to have the desired beneficial osteoconductive, osteoinductive and osteogenic properties of autograft. Osteocel® Plus allows surgeons to offer a complete solution without the added risk and cost of performing a secondary autograft procedure.

Viable Cell Content

Each lot is tested for cell concentration, cell viability, and cell activity (osteogenic potential). The osteogenic potential arises from the mesenchymal and osteoprogenitor cells in Osteocel Plus. Following processing of marrow-rich bone, release testing demonstrates osteogenic potential according to the following criteria:

- Rich supply of osteopotential cells: Greater than 250,000 cells/cc
- Viability: Greater than 70% cell viability
- Positive osteogenicity: In vitro cell culture assay

Safety Profile

- Aseptic tissue processing.
- Antimicrobial treatment of tissue.
- Sterility cultures performed on every lot.
- Selective immunodepletion process.
- No evidence of ectopic tissue formation or inflammatory cellular response with experimental high doses of MSCs.*

Donor Testing

- Hepatitis B Surface Antigen
- Hepatitis B Core Antibody
- Hepatitis C Virus Antibody
- Hepatitis C Nucleic Acid Test
- HIV-1 and 2 Antibody
- HIV-1 Nucleic Acid Test
- Human T-Lymphotropic Virus Antibody I/II
- Syphilis (Treponema Pallidum)

Donor Screening

- Medical and social history evaluation.
- Physical examination.
- Medical record evaluation, including autopsy report (if performed).
- Licensed physician review and release of every donor record.

Quality Assurance

- GTP compliant according to FDA regulations.
- All applicable state licensure / registrations.
- AATB® Accreditation



Osteocel® Plus Allograft Bone Matrix

5013001A	1cc vial	\$789.79	\$789.79	\$671.32	\$671.32
5013005A	5cc vial	\$3,555.29	\$3,555.29	\$3,022.00	\$3,022.00

Osteocel® and Osteocel® Plus are federally registered trademarks of NuVasive, Inc.

Footnote References:
* Data on file with Osiris Therapeutics



CRYOGENIC FREEZER PROGRAM

Important Ordering Details

- Due to the nature of the product, the order and delivery of Osteocel® Plus needs to be carefully coordinated. Osteocel® Plus is not available for purchase online. Osteocel® Plus requires Priority Shipping and Handling, which is in addition to prices shown. Please call for ordering details.

XENOGRAFTS



Holds together when hydrated for ease of handling

NuOss XENOGRAFT PARTICULATE

A Reliable Bone Substitute Used by Dental Professionals Worldwide

NuOss natural cancellous and cortical bone matrix is produced by the removal of all organic components from bovine bone. Due to its natural porous structure, NuOss is physically and chemically comparable to the mineralized matrix of human bone.

The proprietary manufacturing process of NuOss allows for maintenance of the naturally occurring bone mineral structure, including macroscopic and microscopic structures. Due to this trabecular architecture with interconnecting macro and micro pores, the ingrowth of new bone and associated vascularization at the grafting site is optimized.

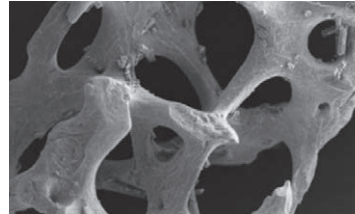
NuOss may be used with autogenous bone where there is an insufficient quantity of bone to fulfill the needs of the proposed surgical procedure.

Handling: The structure of NuOss aids in particulate hydration and delivery of the product to the defect.

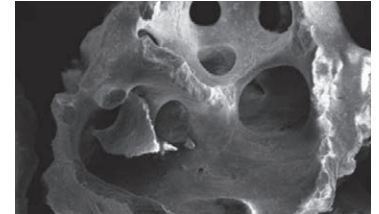
Particle Distribution: NuOss maximizes the distribution of the preferred particle sizing within desired ranges.

Particle Structure and Porosity: NuOss maintains the high porosity and trabecular structure of natural mineralized bone and maximizes the potential for angiogenesis.¹

NuOss 50x magnification



Bio-Oss® 50x magnification

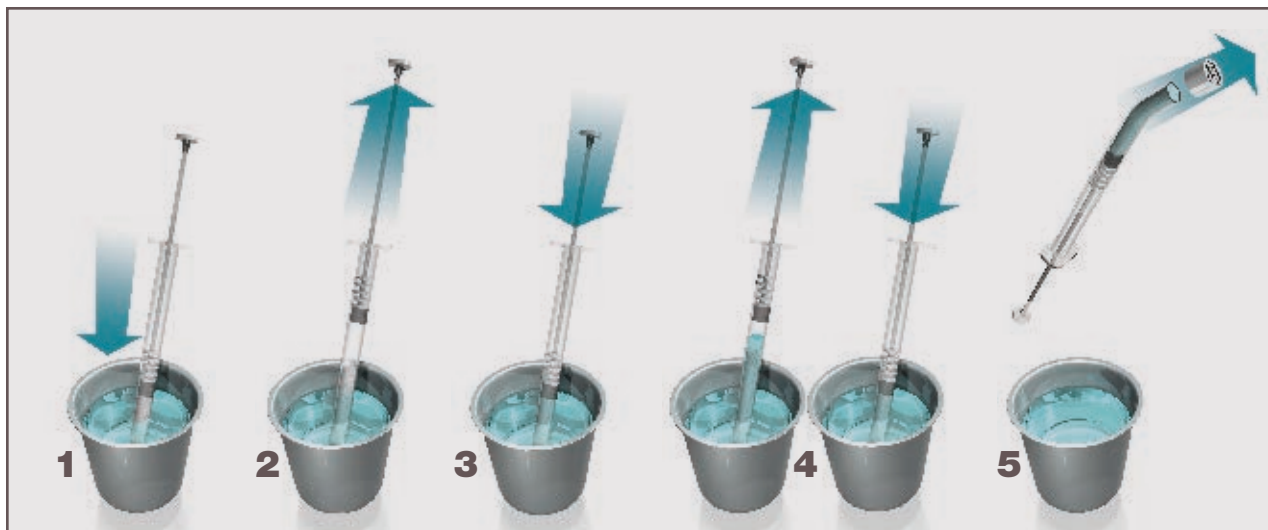


NuOss® is a registered trademark of ACE Surgical.

NuOss® is manufactured for ACE Surgical.

Bio-Oss® is a registered trademark of ED. Geistlich Söhne AG.

1. Klenke FM, Liu Y, Yuan H, Hunziker EB, Siebenrock KA, Hofstetter W. Impact of pore size on the vascularization and osseointegration of ceramic bone substitutes in vivo. J Biomed Mater Res A. 2008 Jun 1; 85(3): 777-86.



XENOGRAFTS



NuOss Cancellous Particulate

5099001	0.25-1.0mm	0.25g	0.6cc	\$90.79	\$90.79	\$72.63	\$72.63
5099002	0.25-1.0mm	0.5g	1.2cc	\$145.79	\$145.79	\$116.63	\$116.63
5099003	0.25-1.0mm	1.0g	2.4cc	\$243.99	\$243.99	\$195.19	\$195.19
5099004	0.25-1.0mm	2.0g	4.7cc	\$423.29	\$423.29	\$338.63	\$338.63
5099102	1.0-2.0mm	0.5g	1.7cc	\$145.79	\$145.79	\$116.63	\$116.63
5099104	1.0-2.0mm	2.0g	6.8cc	\$423.29	\$423.29	\$338.63	\$338.63

NuOss Cortical Particulate

5091001	0.50-1.0mm	0.25g	0.4cc	\$90.79	\$90.79	\$72.63	\$72.63
5091002	0.50-1.0mm	0.5g	0.8cc	\$145.79	\$145.79	\$116.63	\$116.63
5091003	0.50-1.0mm	1.0g	1.6cc	\$243.99	\$243.99	\$195.19	\$195.19
5091004	0.50-1.0mm	2.0g	3.2cc	\$423.29	\$423.29	\$338.63	\$338.63



**NuOss DS
Cancellous Granules in a Preloaded Delivery Syringe**

Particulate: NuOss DS contains our best-selling small particle NuOss cancellous.

Delivery Syringe: The preloaded NuOss Delivery Syringe makes it easier to hydrate and place the graft material, minimizing preparation time and particulate migration at the surgical site.

NuOss Cancellous Particulate in a Delivery Syringe

5099025	0.25-1.0mm	0.25cc	\$71.49	\$71.49	\$57.19	\$57.19
5099050	0.25-1.0mm	0.50cc	\$103.29	\$103.29	\$82.63	\$82.63



HYDRATING NUOSS DS

Remove the sterile pre-loaded NuOss in Delivery Syringe from packaging and, per the IFU, hydrate with osseous coagulum, patient's blood, or sterile saline.

- 1 With the perforated cap left on the syringe, immerse the tip of the syringe in the hydrating fluid.
- 2 Pull up on the plunger to draw the fluid into the syringe.
- 3 With syringe pressed against bottom of basin, push down on the plunger to expel excess fluid/air.
- 4 This pull and push action should be repeated 3 times or until the material is fully hydrated.
- 5 Remove the perforated cap and deliver the hydrated particulate to the defect site.

The procedures and techniques presented throughout this catalog are intended to provide basic reference only and should not be substituted for the complete surgical procedure being performed by a licensed practitioner. A complete understanding and execution of the techniques and procedures presented within this catalog are the full responsibility of the licensed practitioner. These procedures and techniques are NOT TO BE SUBSTITUTED for the practitioner's complete knowledge, education, experience or for any instrumentation or product instruction for use.



XENOGRAFTS

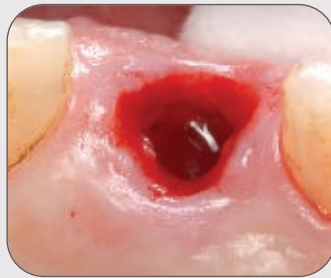
NuOss COLLAGEN PRODUCTS

Just like NuOss granules, naturally structured NuOss Collagen combines the mineral properties of cancellous particulate with the space maintenance of collagen. This highly manageable combination provides a convenient approach to filling periodontal and maxillofacial defects. With NuOss Collagen products, there is no mixing or loose handling.



GUIDED BONE REGENERATION

Using NuOss XC Socket.



Atraumatic tooth extraction without flap reflection. Note: Maintain intact bony walls of the extraction socket and preserve gingival anatomy.



NuOss XC Socket self expanding composite is easily inserted directly into extraction site using the product's self-contained delivery syringe.



Upon contact with blood, NuOss XC expands to fill the entire defect.

XENOGRAFTS



NuOss Plug
Anorganic Bovine Bone with Collagen

NuOss Plug contains low heat processed anorganic bone that will remodel and support placement of an implant within, on average, 6-9 months. NuOss Plug is easy to place and prevents particulate migration once placed into the surgical site.

NuOss Plug						
5094001	Tapered, 9 x 15mm	5/box	\$289.79	\$289.79	\$231.83	\$231.83
5094002	Straight, 10 x 20mm	5/box	\$289.79	\$289.79	\$231.83	\$231.83



NuOss Collagen Block
Anorganic Bovine Bone with Collagen

NuOss Collagen Block: Available in 3 sizes, NuOss Collagen can be easily trimmed to shape the defect. Hydration can be done prior to insertion or once it has been placed.

NuOss Collagen Block						
5099100	6 x 7 x 8mm	100mg	\$103.29	\$103.29	\$82.63	\$82.63
5099250	8 x 9 x 9mm	250mg	\$192.79	\$192.79	\$154.23	\$154.23
5099500	10 x 11 x 12mm	500mg	\$321.29	\$321.29	\$257.03	\$257.03



NuOss XC
Self-Expanding Composite

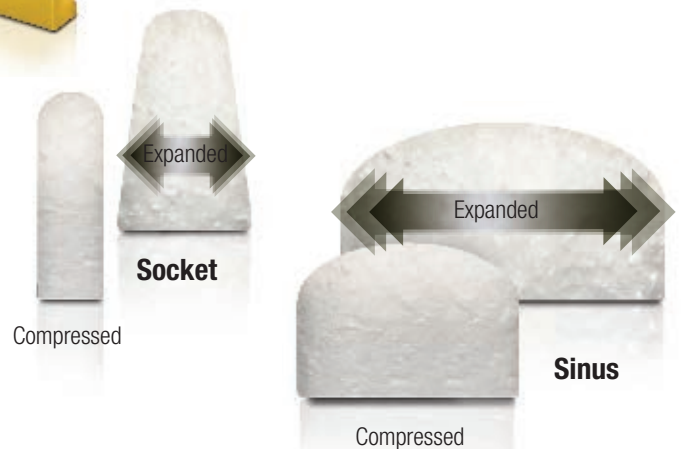
Expansion: Expanding composite material allows for placement in a compressed form. Upon hydration/contact with blood, the material will self-expand to fill the entire defect.

NuOss XC Socket: Preshaped and ready to place directly into the extraction cavity.

NuOss XC Sinus: Upon successful elevation of the sinus membrane, NuOss XC Sinus is placed without pre-hydration, into the sinus cavity.

NuOss XC Socket					
5092001	6 x 15mm expanded state		\$97.29	\$97.29	\$77.83
5092002	9 x 15mm expanded state		\$154.99	\$154.99	\$123.99

NuOss XC Sinus					
5093001	17 x 10mm expanded state		\$154.99	\$154.99	\$123.99
5093002	22 x 12mm expanded state		\$250.49	\$250.49	\$200.39





SYNTHETICS

CaSO₄



CaSO₄ CALCIUM SULFATE HEMIHYDRATE

CaSO₄ is one of the first bone materials ever used in a grafting procedure and maintains a safety record dating back more than 100 years. CaSO₄ is considered one of the clinician's first choices among synthetic bone grafting materials. Calcium Sulfate is sterile, highly purified and continues its bioactivity through the entire healing process. CaSO₄ is totally resorbed at the completion of the healing period.

CaSO₄ Features

- Osteoconductive
- Inhibits non-osteogenic cells
- Promotes wound healing
- Completely resorbable
- Easy to set-up
- Easy to handle
- Easy to place
- Cost effective
- Combines well with bone grafting particulate

CaSO₄ Kit Contents

- 0.5 gram or 1.0 gram calcium sulfate powder in a sterile mixing dish
- Regular set liquid

5052002	0.5 gram	each	\$45.79	\$45.79	\$38.92	\$38.92
5052001	1.0 gram	each	\$53.99	\$53.99	\$45.89	\$45.89



SYNTHETICS

synOss™ SYNTHETIC BONE PARTICULATE

synOss Synthetic Mineral is an osteoconductive calcium phosphate based bone graft material with a carbonate apatite structure similar to the structure of human bone.

synOss™ is recommended for:

- Augmentation or reconstructive treatment of alveolar ridge
- Filling of periodontal defects and after root resection/hemisection, apicoectomy, and cystectomy
- Filling of extraction sockets to enhance preservation of the alveolar ridge
- Elevation of maxillary sinus floor
- Filling of periodontal defects in conjunction with products intended for GTR and GBR
- Filling of peri-implant defects in conjunction with products intended for Guided Bone Regeneration
- Filling of infrabony periodontal defects

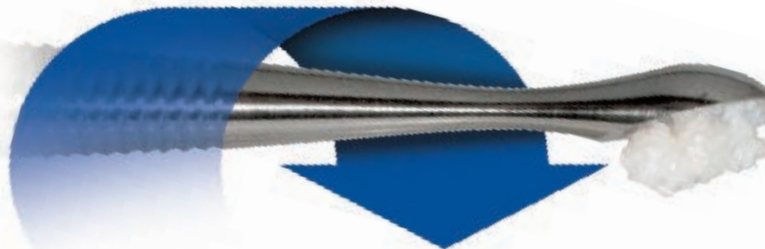
Material Composition

- The material composition is calcium phosphate in a carbonate apatite structure. The product is supplied in granular form, and is sterile, non-pyrogenic, and for single use only.

Product	synOss	NuOss®
Calcium (wt%)	33.5 ± 2.1	36.3 ± 3.7
Phosphate (wt%)	46.7 ± 0.7	49.2 ± 2.1
Calcium (mM/kg)	8428 ± 569	9065 ± 940
Phosphate (mM/kg)	5905 ± 92	6225 ± 276
*Ca/P Ratio	1.43 ± 0.07	1.45 ± 0.09

*Results represent an average of 2 measurements ± S.D.

5095000	0.25 gram	0.35-1.0mm	0.5cc	\$78.29	\$78.29	\$66.55	\$66.55
5095100	0.5 gram	0.35-1.0mm	1.0cc	\$116.49	\$116.49	\$99.02	\$99.02
5095200	1.0 gram	0.35-1.0mm	2.0cc	\$212.49	\$212.49	\$180.62	\$180.62
5095300	2.0 gram	0.35-1.0mm	3.5cc	\$371.79	\$371.79	\$316.02	\$316.02



When synOss is hydrated it holds to the delivery spoon (#1000216), even when it's inverted.

SynOss™ is a trademark of ACE Surgical.



MEMBRANES

alloguide® gf

alloguide gf GROWTH FACTOR, RESORBABLE MEMBRANE

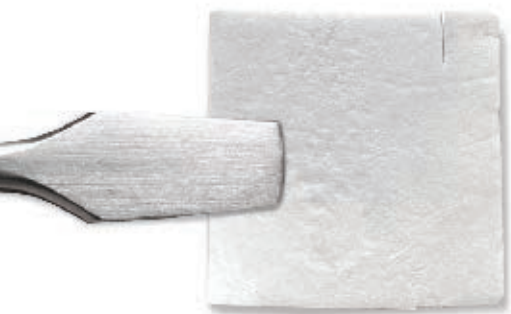
alloguide gf is a lyophilized placental barrier membrane that preserves its endogenous growth factors associated with the repair of oral wounds. alloguide gf is an ideal membrane to support Guided Tissue Regeneration (GTR) and Guided Bone Regeneration (GBR) dental procedures as it retains the high levels of regenerative growth factors naturally present in the placental membrane.

The GF stands for Growth Factor

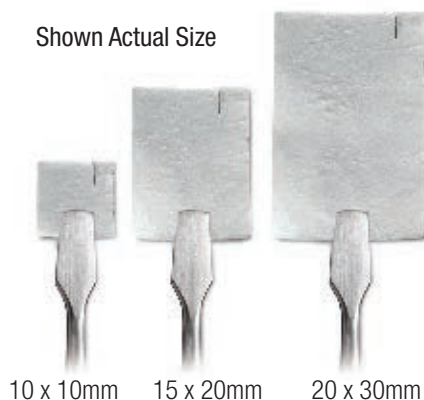
Placental Tissue is a rich source of extracellular matrix proteins and growth factors that have been shown to be involved in the natural wound repair process¹ and is commonly used in a wide array of therapeutic applications, including wound care and orthopedics.^{2,3} The processing and preservation of the placental tissue allograft will influence the preservation of those growth factors.^{4,5}

A Sampling of the Preserved Growth Factors⁶

Growth Factor	Present	Growth Factor	Present
BDNF	✓	HGF	✓
bFGF	✓	OPG	✓
FGF	✓	PDGF	✓
BMP-4	✓	SCF	✓
BMP-5	✓	TGF	✓
BMP-7	✓	TGFβ-3	✓
EGF	✓	VEGF	✓



Shown Actual Size



10 x 10mm 15 x 20mm 20 x 30mm

Characteristics of alloguide gf:

- Preserves protein structures and maintains bioactive capabilities of important wound healing elements of placental tissue
- Preserves extracellular matrix
- Maintains natural tissue thickness
- Excellent handling and ease of application

alloguide gf Safety:

- AATB® standards, FDA regulations and stringent internal processes, policies and procedures
- Processed under aseptic conditions
- Sterility testing performed on every lot

alloguide gf Processing:

- alloguide gf is processed using a proprietary freeze-drying solution during lyophilization

alloguide gf

1250808	8 x 8mm	each	\$62.29	\$62.29	\$52.95	\$52.95
1251010	10 x 10mm	each	\$85.29	\$85.29	\$72.50	\$72.50
1251520	15 x 20mm	each	\$171.99	\$171.99	\$146.19	\$146.19
1252030	20 x 30mm	each	\$268.29	\$268.29	\$228.05	\$228.05

alloguide® is a registered trademark of ACE Surgical.
alloguide® gf is manufactured for ACE Surgical Supply.

References

1. Chopra and Thomas 2013. J Biomim Biomater and Tissue Eng
2. Brantley and Verla 2015. Advances in Wound Care
3. Heckmann et al 2016. American Journal of Orthopedics
4. McQuilling et al 2017. Wounds
5. Paolin et al 2016. Cell Tissue Bank
6. Data on File



MEMBRANES

conFORM RESORBABLE COLLAGEN MEMBRANE

conFORM is a resorbable collagen membrane matrix made from Type I Bovine collagen. Its pliable characteristics and predictable resorption time of 3-4 months make it an ideal membrane for guiding the healing of bone and surrounding tissue. When hydrated, conFORM will naturally adapt to surgical defects and maintain a high tensile strength, which makes it the ideal membrane for suturing.

With its in vivo stability, permeability and mechanical strength, conFORM is a reliable choice for various clinical applications. When used in conjunction with a bone grafting particulate, conFORM can help mitigate the migration of the particulate from the surgical site. Its resorbability eliminates the need for surgical removal. conFORM is packaged sterile, non-pyrogenic, and for single use.

Features

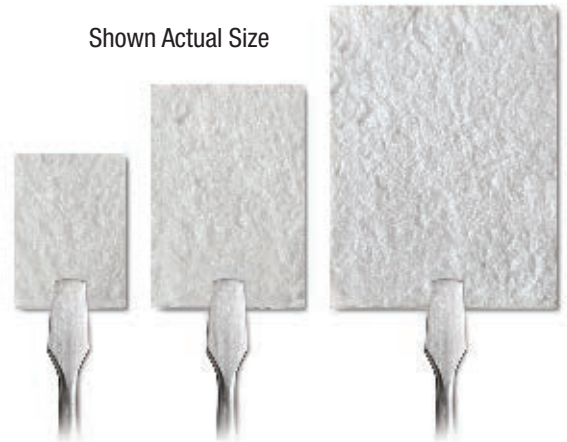
- White, non-friable membrane matrix engineered from highly purified Type I Collagen
- Fully resorbable with a predictable resorption time of 3-4 months¹
- Guides healing and regeneration of bone and surrounding tissue
- Unique fiber orientation provides high tensile strength for in situ stability of membrane
- Cell occlusive, designed to retard and/or prevent epithelium down growth

Advantages

- Conforms to surgical site without re-shaping
- Easy to handle, does not adhere to itself
- Sufficient resorption time for sustained function in bone repair
- Can easily be trimmed during surgery for a final fit
- May be placed with either side against the tissue or bone



Shown Actual Size



15 x 20mm

20 x 30mm

30 x 40mm

conFORM

5091520	15 x 20mm	each	\$146.99	\$146.99	\$124.94	\$124.94
5092030	20 x 30mm	each	\$181.29	\$181.29	\$154.10	\$154.10
5093040	30 x 40mm	each	\$291.99	\$291.99	\$248.19	\$248.19

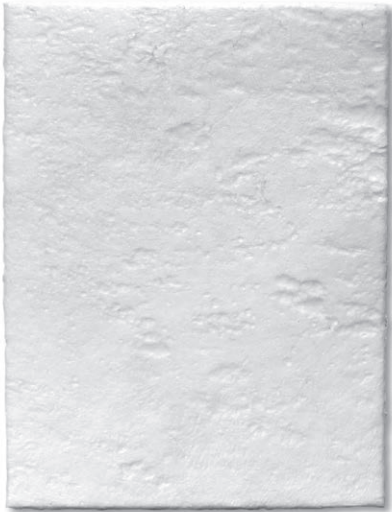
References

1. D.Yuen, J. Ulreich, G. Zuclich, H-B. Lin and S-T Li "Prediction of In Vivo Stability of a Resorbable, Reconstituted Type I Collagen Membrane by In Vitro Methods." 2000 Society for Biomaterials - Sixth World Congress.

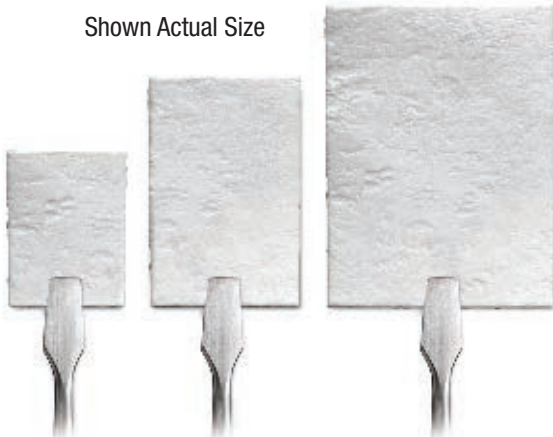




MEMBRANES



Shown Actual Size



15 x 20mm

20 x 30mm

30 x 40mm

**MemGuide
RESORBABLE PORCINE MEMBRANE**

MemGuide Porcine Dental Membrane is a non-pyrogenic porcine derived dental barrier membrane. MemGuide is sourced from porcine peritoneum which is a naturally thicker membrane than porcine small intestine submucosa¹. The profile of MemGuide results in outstanding handling characteristics. MemGuide retains Growth Factors VEGF and TGF.² VEGF and TGF β are known to be key contributors to tissue repair.³ The Growth Factors in porcine peritoneum share homology with human growth factors which can induce response in human cells.⁴⁻⁶ MemGuide is fully resorbable, eliminating the need for a second surgical procedure and is fully resorbable with a 6-month resorption profile.

Features

- Fully resorbable with a resorption time of 6 months
- Guides healing and regeneration of bone and surrounding tissue
- Place and trim in a hydrated or dry state
- May be sutured when required
- Available in 3 convenient sizes
- Packaged sterile in a pouch in pouch configuration
- Store at room temperature

Advantages:

- Fully resorbable - no second surgery required for removal
- Long resorption time for sustained function during bone repair
- Flexible clinical procedure allows for trimming and placing in hydrated or dry state
- Excellent handling characteristics
- Endogenous extracellular matrix proteins and growth factors are preserved^{3,7}
- Porcine growth factor share homology with human growth factors can induce response in human cells.⁴⁻⁶

MemGuide

7351520	15 x 20mm	each	\$154.79	\$154.79	\$131.57	\$131.57
7352030	20 x 30mm	each	\$190.79	\$190.79	\$162.17	\$162.17
7353040	30 x 40mm	each	\$307.49	\$307.49	\$261.37	\$261.37

MemGuide[®] is a registered trademark of ACE Surgical Supply.

MemGuide[®] is manufactured for ACE Surgical Supply.

References

1. Shi and Ronfard Int J Burns Trauma. 2013; 3(4): 173-179.
2. Hoganson, et al, Biomaterials. 2010 (27): 6934-40.
3. Chopra and Thomas J Biomim Biomatter and Tissue Eng. 2013 18(1)
4. Stroobant and Waterfield. The EMBO Journal 1984 3(12):2963-2967
5. Taylor Journal of Leukocyte Biology 2009. 85
6. Holmes and Zachery Genome Biology 2005. 6(2) Article 209
7. Luo et al Journal of Biomedical Materials Research B: Applied Bio Materials 2015



MEMBRANES

RCM⁶ RESORBABLE COLLAGEN MEMBRANE

RCM⁶ Resorbable Collagen Membrane allows you to guide healing and regeneration of bone and surrounding tissue within your time frame. RCM⁶ is intended to aid in the wound healing process within oral surgical procedures, such as: dental implants, bone defects, periodontal defects and ridge augmentations. When used in conjunction with a bone grafting particulate, RCM⁶ can help mitigate the migration of the particulate from the surgical site. RCM⁶ is packaged sterile, non-pyrogenic, and for single use. Its resorbability eliminates the need for surgical removal.

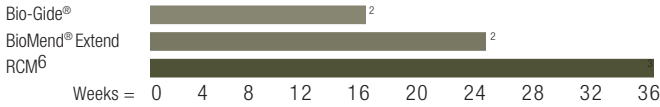
Features

- White, non-friable membrane matrix engineered from highly purified Type I Collagen
- Fully resorbable with a resorption time of up to 6 months¹
- Guides healing and regeneration of bone and surrounding tissue
- Unique fiber orientation provides high tensile strength for in situ stability of membrane
- Cell occlusive, designed to retard and/or prevent epithelium down growth

Advantages

- Long resorption time, for sustained function in bone repair
- High mechanical strength for membrane stabilization
- Each piece can be easily trimmed during surgery for a final fit
- May be placed with either side against the tissue or bone

Resorption Comparison *



* Approximate in vivo resorption time.

RCM⁶

5096000	15 x 20mm	each	\$119.79	\$119.79	\$101.82	\$101.82
5093000	20 x 30mm	each	\$146.99	\$146.99	\$124.94	\$124.94
5098000	30 x 40mm	each	\$219.99	\$219.99	\$186.99	\$186.99

RCM⁶ is a registered trademark of ACE Surgical Supply.

RCM⁶ is manufactured for ACE Surgical Supply.

BioMend[®] Extend is a registered trademarks of Zimmer Dental.

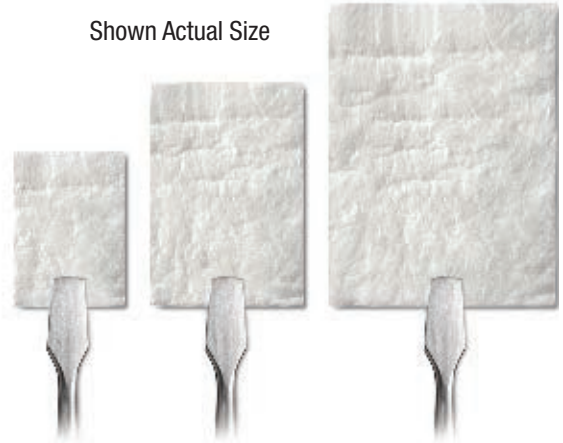
Bio-Gide[®] is a registered trademark of ED. GEISTLICH SOHNE AG.

References

1. D.Yuen, J. Ulreich, G. Zuclich, H-B. Lin and S-T Li "Prediction of In Vivo Stability of a Resorbable, Reconstituted Type I Collagen Membrane by In Vitro Methods." 2000 Society for Biomaterials - Sixth World Congress.
2. Reported from the product's Instructions for Use.
3. RCM⁶ Data on file



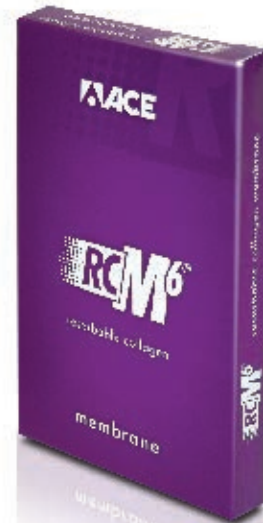
Shown Actual Size



15 x 20mm

20 x 30mm

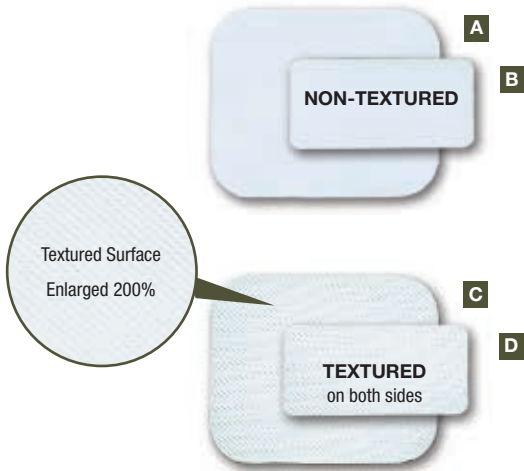
30 x 40mm





MEMBRANES

Membranes are shown actual size.



CYTOFLEX® TEFGUARD® PTFE BARRIER MEMBRANES

Cytoflex Tefguard is a non-resorbable membrane for use as a space-maintaining barrier in guided tissue and guided bone regeneration procedures. Tefguard is composed of a proprietary micro porous polytetrafluoroethylene (PTFE) thin film.

The construction of the surface and porosity of the material is suitable for adhesion of host cells to the material while preventing passage and integration of bacteria within the interstices of the material. The supple membrane conforms easily to tissue contours, and yet offers sufficient stiffness to maintain space over the bony defect.

Both smooth and micro-texture surfaces are designed to prevent tissue and bacteria ingrowth. Tefguard Textured design allows for increased flap attachment for additional localized stability. Both Tefguard options are intended for use as a barrier membrane in guided tissue and guided bone regeneration procedures.

Tefguard Advantages:

- Excellent handling, rigidity and easily adaptable
- Can be easily trimmed to desired shape
- Can be easily fixated using either bone tacks or bone screws
- Easily retrieved as one piece
- Resists fibroblasts and bacteria penetration
- Increased capability of host tissue attachment with Tefguard Textured
- Facilitates tissue regeneration despite flap recessions, or incomplete primary closure
- 0.2mm thick
- Sterile

Non-textured A

C010101	25 x 30mm	each	\$72.99	\$72.99	\$62.04	\$62.04
C010105		5/pkg	\$293.29	\$293.29	\$249.30	\$249.30

Non-textured B Single extraction

C010301	12 x 24mm	each	\$54.29	\$54.29	\$46.15	\$46.15
C010305		5/pkg	\$234.29	\$234.29	\$199.15	\$199.15

Textured C

C040201	25 x 30mm	each	\$90.29	\$90.29	\$76.75	\$76.75
C040205		5/pkg	\$357.49	\$357.49	\$303.87	\$303.87

Textured D Single extraction

C040101	12 x 24mm	each	\$70.49	\$70.49	\$59.92	\$59.92
C040105		5/pkg	\$289.29	\$289.29	\$245.90	\$245.90

Cytoflex® and Tefguard® are registered trademarks of Unicare Biomedical.

MEMBRANES

CYTOFLEX® TEFGUARD® PTFE TI-ENFORCED MEMBRANES

TITANIUM REINFORCED PTFE BARRIER MEMBRANES FOR GTR AND GBR PROCEDURES

Cytoflex Tefguard PTFE Textured Membranes with titanium reinforcements are non-resorbable membranes for use as a space-making barrier in guided tissue and guided bone regeneration procedures.

- Improved handling, ideal for modeling and shaping around defects
- Dual textured surface allows membrane to be placed either side up or down
- Range of sizes and configurations for large and small defects
- Can be easily trimmed to desired shape (It is recommended to avoid cutting titanium struts when trimming reinforced membranes)
- Can be easily fixated using either bone tacks or bone screws
- Sterile



Ti-Reinforced Tefguard PTFE Barrier Membrane

C050301	A 12 x 24mm	each	\$135.29	\$135.29	\$115.00	\$115.00
C050901	B 19 x 26mm	each	\$165.99	\$165.99	\$141.09	\$141.09
C051701	C 25 x 30mm	each	\$226.79	\$226.79	\$192.77	\$192.77
C053901	D 25 x 30 x 41mm	each	\$269.29	\$269.29	\$228.90	\$228.90
C054101	E 32 x 40mm	each	\$275.49	\$275.49	\$234.17	\$234.17

Membranes are shown actual size.



Cytoflex® and Tefguard® are registered trademarks of Unicore Biomedical.

ETHICON® VICRYL™ KNITTED MESH

Ethicon Vicryl (polyglactin 910) Knitted Mesh for temporary wound or organ support. Made of an absorbable material, it can provide temporary support during your patients' healing process.

- Undyed
- 6" x 6" (15cm x 15cm)
- Sterile

VKMM	3/box	\$3,595.79	\$3,416.00	\$3,416.00	\$3,236.21
------	-------	-------------------	-----------------------	-----------------------	-----------------------



Ethicon® is a registered trademark of Johnson & Johnson.
VICRYL™ is a trademark of Johnson & Johnson.



WOUND HEALING



RESORBABLE COLLAGEN PLUG, FOAM AND TAPE WOUND DRESSINGS

- Provides an excellent matrix to assist in wound healing
- Beneficial in protecting the oral wound site
- Controls minor bleeding due to the intrinsic hemostatic properties of collagen fibers
- Sterile

Features	Plug	Foam	Tape
Fully resorbable	✓	✓	✓
Ideal for applications in oral wounds	✓	✓	✓
Provides an excellent matrix to assist in wound healing	✓	✓	✓
Protects the oral wound bed	✓	✓	✓
Ideal for extraction sockets	✓		
Controls minor bleeding due to the intrinsic hemostatic properties of collagen fibers	✓	✓	✓

RC Plug Collagen Plug Wound Dressing

5094000	1cm x 2cm	10/box	\$129.49	\$129.49	\$110.07	\$110.07
---------	-----------	--------	----------	----------	----------	----------

RC Foam Collagen Foam Wound Dressing

5092000	2cm x 4cm x 3mm	10/box	\$142.79	\$142.79	\$121.37	\$121.37
---------	-----------------	--------	----------	----------	----------	----------

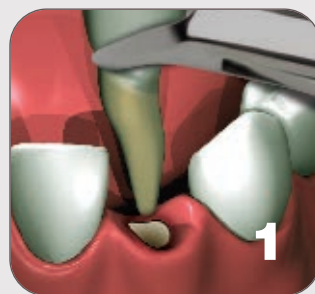
RC Tape Collagen Tape Wound Dressing

5091000	2.5 x 7.5cm x 1mm	10/box	\$194.79	\$194.79	\$165.57	\$165.57
---------	-------------------	--------	----------	----------	----------	----------



CREST PRESERVATION OF INTACT ALVEOLUS

Recommended by Dr. Aron Gonshor, PhD, DDS, FRCD(C), FAO



1. Atraumatic tooth extraction without flap reflection. Note: Maintain intact bony walls of the extraction socket and preserve gingival anatomy.



2. Alveolar socket is grafted to crest with xenograft bone mineral (NuOss®).



3. A resorbable collagen plug (RCP) is cut to size and compressed in place as a dressing.



4. Criss-cross and/or mattress sutures are placed.



5. A removable or fixed prosthesis with an ovate pontic extending 2-3mm subgingivally is placed. This permits plug compression and tissue support.

The procedures and techniques presented throughout this catalog are intended to provide basic reference only and should not be substituted for the complete surgical procedure being performed by a licensed practitioner. A complete understanding and execution of the techniques and procedures presented within this catalog are the full responsibility of the licensed practitioner. These procedures and techniques are NOT TO BE SUBSTITUTED for the practitioner's complete knowledge, education, experience or for any instrumentation or product instruction for use.

WOUND HEALING

**GLUSTITCH PERIACRYL® 90 TISSUE ADHESIVE
REGULAR VISCOSITY**

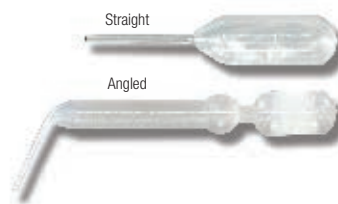
- Effective tissue adhesive which is hemostatic and bacteriostatic
- Excellent alternative to conventional sutures in soft-tissue surgery or to conventional sutures
- Used in periodontal surgical procedures including gingivectomy, mucogingival flaps, biopsies, routine extractions and superficial oral ulcerations
- 2ml and 5ml kits include autoclavable trays

PeriAcryl Violet

PACRYLUV	0.2ml Preloaded applicators	12/box	\$111.29	\$105.73	\$105.73	\$100.16
PACRYL9V	9ml Kit Includes: 3x3 ml bottles, tray, 70 regular pipettes, 20 angled pipettes	kit	\$199.29	\$189.33	\$189.33	\$179.36
PACRYL5V	5ml Multi-use Kit Includes: 5ml MDV, 50 pipettes	kit	\$117.49	\$111.62	\$111.62	\$105.74
PACRYL2V	2ml Mini Kit Includes: 2ml MDV, 20 pipettes	kit	\$77.49	\$73.62	\$73.62	\$69.74

PeriAcryl Clear

PACRYLUC	0.2ml Preloaded applicators	12/box	\$124.79	\$118.55	\$118.55	\$112.31
PACRYL5C	5ml Multi-use Kit Includes: 5ml MDV, 50 pipettes	kit	\$117.49	\$111.62	\$111.62	\$105.74
PACRYL2	2ml Mini Kit Includes: 2ml MDV, 20 pipettes	kit	\$77.49	\$73.62	\$73.62	\$69.74



**GLUSTITCH PERIACRYL 90 TISSUE ADHESIVE
HIGH VISCOSITY**

- 9 times thicker than PeriAcryl 90 Regular Viscosity
- Developed using feedback from periodontists
- Increased control for precision application and less waste
- Same trusted set time and strength as PeriAcryl 90 Regular Viscosity
- Same user friendly delivery system as PeriAcryl 90 Regular Viscosity
- 5ml and 9ml kits include autoclavable trays

PeriAcryl Violet

PACRYL5VHV	5ml HV Multi-use Kit Includes: 5ml MDV, 50 pipettes	kit	\$124.99	\$118.74	\$118.74	\$112.49
PACRYL9VHV	9ml HV Multi-use Kit Includes: 3x3 ml bottles, tray, 70 regular pipettes, 20 angled pipettes	kit	\$212.99	\$202.34	\$202.34	\$191.69



GLUSTITCH PIPETTES FOR PERIACRYL MULTI-USE KITS*

PIPETTE	Straight *	100/pack	\$18.99	\$18.04	\$18.04	\$17.09
PIPETTESANGLED	Angled *	50/pack	\$21.99	\$20.89	\$20.89	\$19.79

*Pipettes are empty and do not contain product

PeriAcryl® is a registered trademark of GluStitch Inc.



FIXATION

TRUFIX FIXATION SYSTEM

The All-In-One Bone Fixation and Membrane Stabilization Solution

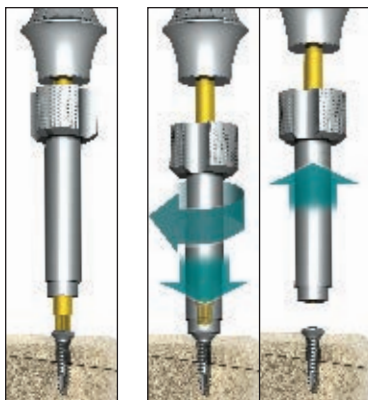
The TruFIX System from ACE Surgical Supply provides you with everything you need for both bone fixation and membrane stabilization. This system incorporates all the necessary components to pick up and drive the ACE TruSCREW and TruTACK. The TruFIX system eliminates the need for multiple systems and unnecessary components, making it user-friendly for your practice.

- True centered patented locking connection
- True axial alignment with pickup each time
- TruSCREW self-drilling screw developed for easy insertion with maximum fixation
- TruSCREW patented removal sleeve for disengaging the screw from the driver without damaging screw head
- TruTACK hexagon driver head and barbed tip to pierce without drilling for simple tack insertion and easy screw-like removal

The TruSCREW, with its aggressive cutting flutes, is an ideal bone screw for the fixation of small bone within the oral and maxillofacial environment. These cutting flutes (in most instances) eliminate the need for any pre-drilling. The patented design of the screw ensures an effortless insertion into all types of bone.

The TruTACK makes the stabilization of membranes quick and trouble-free. ACE's unique tack incorporates a hexagon on its head and threads on its shaft, allowing for easy removal. The truTACK is placed like a tack and removed like a screw, a feature that you will not find in any other system.

The TruTENT is a refinement of the truSCREW. Its raised collar and wider head is designed to support a titanium mesh during augmentation procedures.



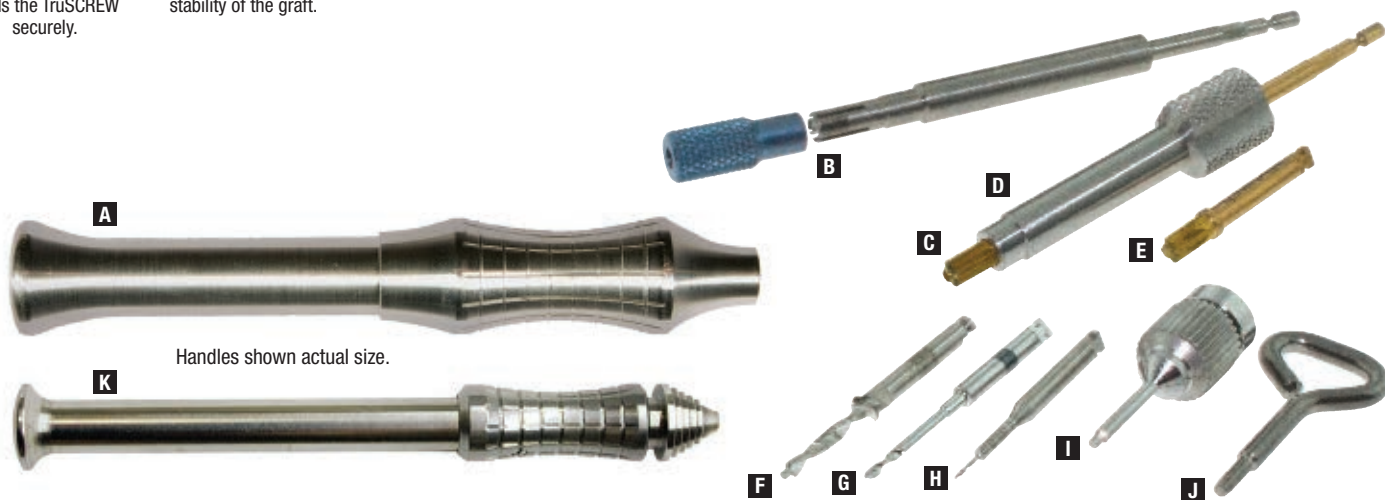
The TruFIX driver's true-centered locking connection holds the TruSCREW securely. The removal sleeve disengages the driver from the screw without compromising the screw or the stability of the graft.

45418015	truFIX Complete Fixation System	1 kit	\$1,244.29	\$1,244.29	\$1,119.86	\$1,119.86
System Includes:						
45419001	A truFIX Driver Handle	each	\$348.99	\$348.99	\$314.09	\$314.09
45417001	B truTACK Driver Tip (comes with Tip Cover)	each	\$105.99	\$105.99	\$95.39	\$95.39
45415001	C truSCREW Driver Tip	each	\$82.49	\$82.49	\$74.24	\$74.24
45417901	D truSCREW Driver Removal Sleeve	each	\$85.79	\$85.79	\$77.21	\$77.21
45415201	E truSCREW Driver Tip, Contra-Angle	each	\$93.99	\$93.99	\$84.59	\$84.59
45440203	F 2-Step Countersink Bur, Ø 0.8 and 1.6mm, Contra-Angle	each	\$68.29	\$68.29	\$61.46	\$61.46
45440202	G Ø 1.1mm Pilot Twist Drill, Contra-Angle, 29.8mm Length	each	\$79.29	\$79.29	\$71.36	\$71.36
502700045	H Ø 0.45mm Pilot Drill, Contra-Angle, 27mm Length	each	\$51.99	\$51.99	\$46.79	\$46.79
20157702	I Hand Driver, 0.88mm External Hex	each	\$81.79	\$81.79	\$73.61	\$73.61
45450201	J truSCREW Packaging Removal Tool	each	\$51.99	\$51.99	\$46.79	\$46.79
45418501	truFIX Tray	each	\$408.29	\$408.29	\$367.46	\$367.46

TruFIX Small Driver Handle (sold separately)

This smaller, thinner, and lighter handle is often preferred by surgeons with smaller hands.

45419501	K Small Driver Handle, 89mm (3.5") long	each	\$138.99	\$138.99	\$125.09	\$125.09
----------	--	------	----------	----------	----------	----------

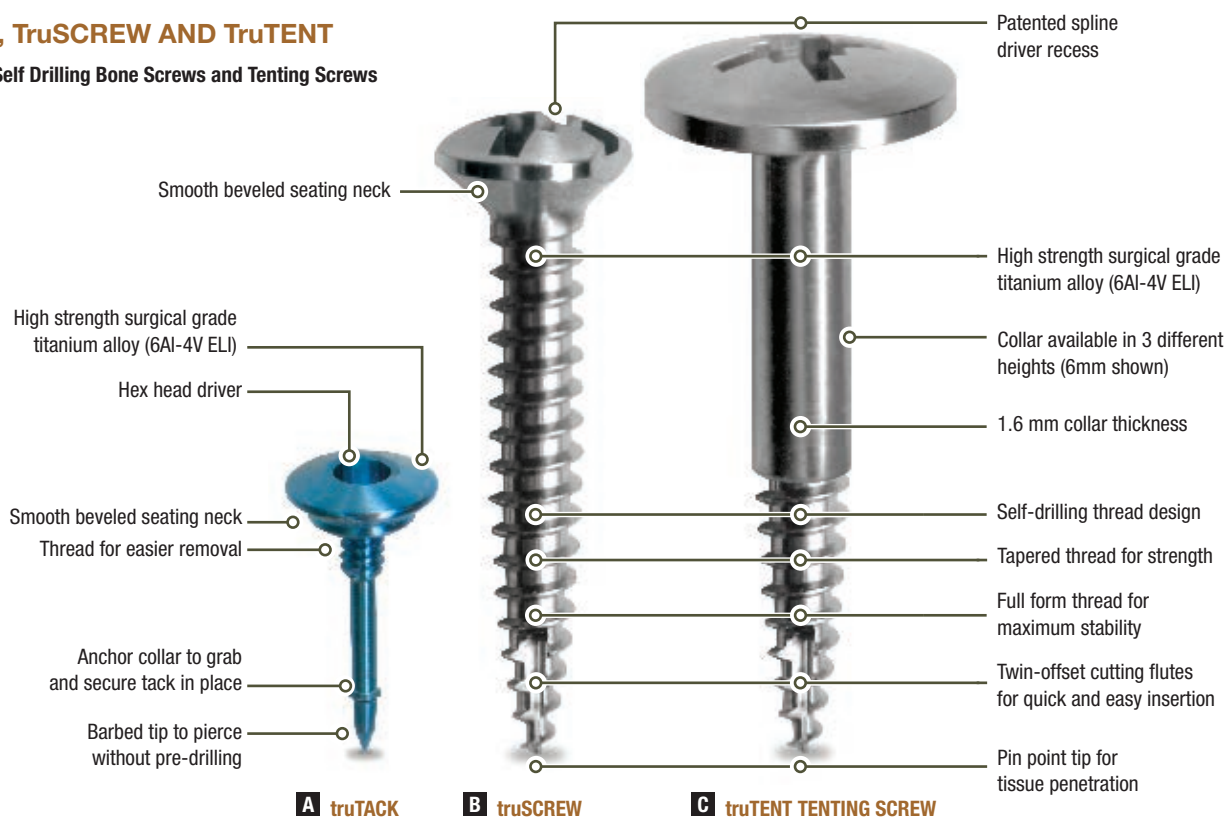


Handles shown actual size.

FIXATION

TruTACK, TruSCREW AND TruTENT

Bone Tacks, Self Drilling Bone Screws and Tenting Screws



A truTACK 2.5mm head diameter

• Sterile

see chart 10/cassette \$157.29 \$157.29 \$133.70 \$133.70

Total Length	Thread Ø	Number
3.0mm	0.7mm Thread Ø	9600313
5.0mm	0.7mm Thread Ø	9600314

B truSCREW 3mm head diameter

• Sterile

see chart 5/cassette \$152.79 \$152.79 \$129.87 \$129.87

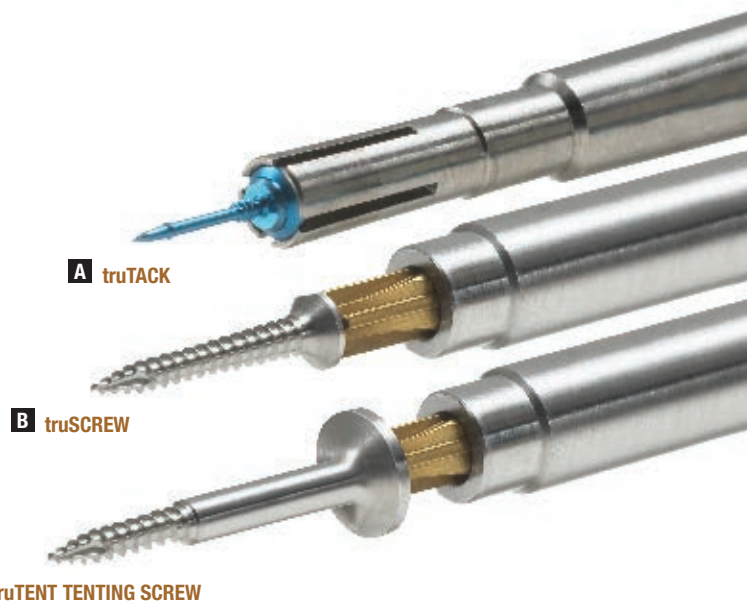
Total Length	1.2mm Thread Ø	1.5mm Thread Ø	2.0mm Thread Ø
4.5mm	45427202	–	–
6.0mm	45427203	45427502	45428002
7.5mm	45427204	45427503	45428003
9.0mm	45427205	45427504	45428004
10.5mm	45427206	45427505	45428005
12.0mm	–	45427506	45428006
13.5mm	–	45427507	45428007
15.0mm	–	45427508	45428008

C truTENT 5mm head diameter

• Sterile

see chart 1/package \$55.79 \$55.79 \$47.42 \$47.42

Total Length	Collar Height	1.5mm Thread Ø	
10.0mm	4mm	454391001	–
12.0mm	6mm	454391002	–
14.0mm	8mm	454391003	–



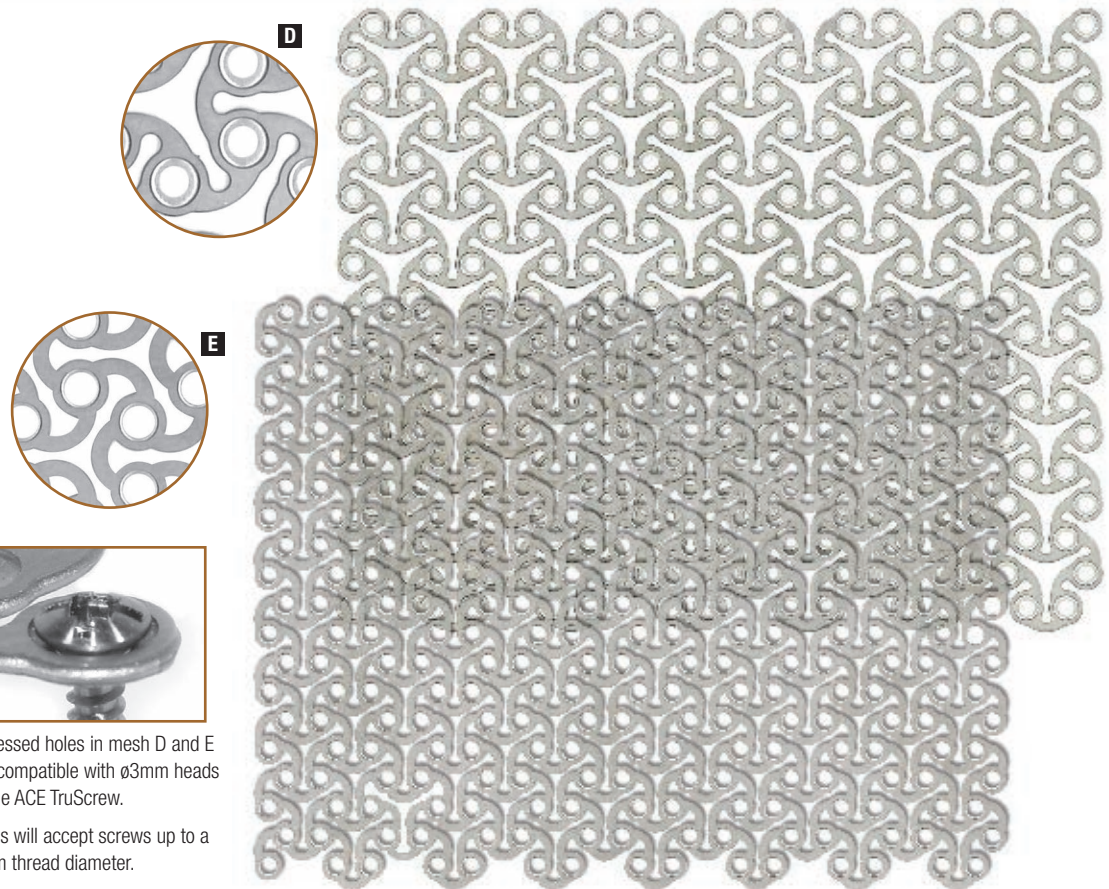
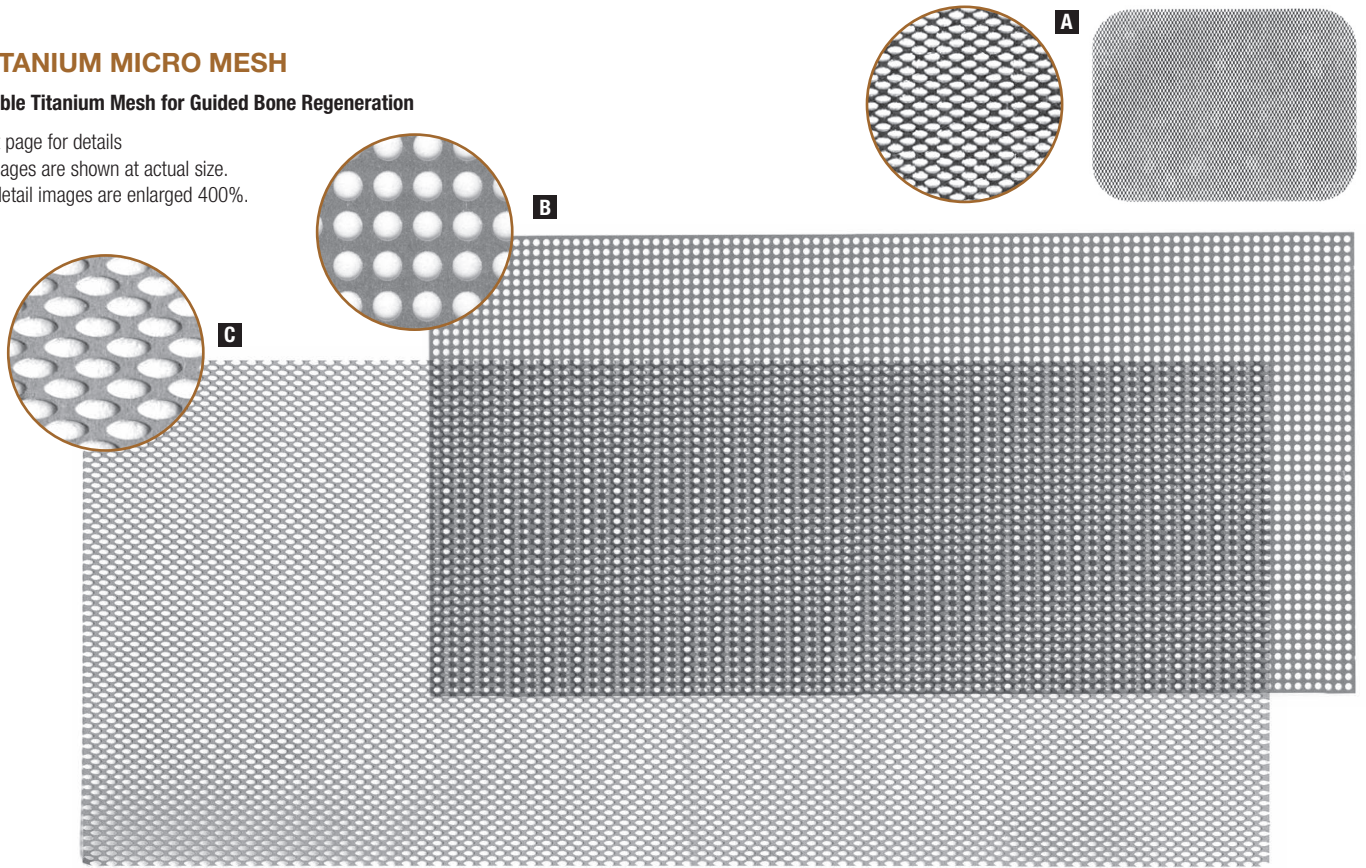


FIXATION

ACE TITANIUM MICRO MESH

Customizable Titanium Mesh for Guided Bone Regeneration

- See next page for details
- Mesh images are shown at actual size.
- Circled detail images are enlarged 400%.



Recessed holes in mesh D and E are compatible with \varnothing 3mm heads of the ACE TruScrew.

Holes will accept screws up to a 2mm thread diameter.

FIXATION

ACE TITANIUM MICRO MESH

Customizable Titanium Mesh for Guided Bone Regeneration

See facing page for images

- Manufactured from commercially pure titanium (6Al-4V EL)
- Perforated • Non-sterile
- Can be secured with ACE TruFIX Self-Drilling bone screws
- Trim to size using ACE Wire Cutting Scissors

0039429	A	34 x 25mm	0.1mm thick	each	\$68.29	\$68.29	\$58.05	\$58.05
0039430	B	120 x 60mm	0.1mm thick	each	\$263.79	\$263.79	\$224.22	\$224.22
0039433	C	152 x 66mm	0.2mm thick	each	\$284.29	\$284.29	\$241.65	\$241.65
00394501	D	98.5 x 77.5mm	0.6mm thick	each	\$284.29	\$284.29	\$241.65	\$241.65
00394701	E	98.5 x 77.5mm	0.2mm thick	each	\$284.29	\$284.29	\$241.65	\$241.65



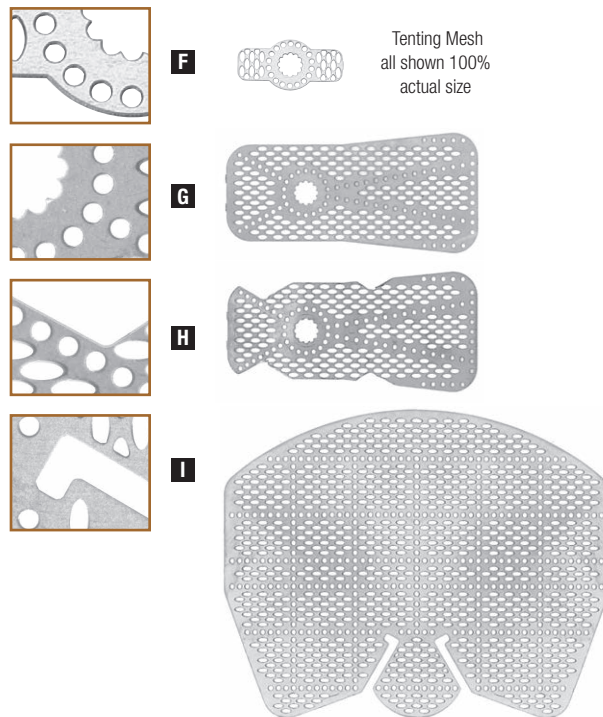
Mesh inset images are enlarged 400%

ACE TITANIUM TENTING MESH

Pre-Shaped Titanium Mesh for Guided Bone Regeneration

- **F G H** feature a 12 point center locking design, which supports the connection on top of standard 2.7mm External Hexagon Implants and ACE Tenting Screws
- Manufactured from commercially pure titanium (6Al-4V EL), perforated, non-sterile
- Can be secured with ACE TruFIX self-drilling bone screws

0039434	F	7 x 14mm	0.2mm thick	each	\$64.79	\$64.79	\$55.07	\$55.07
0039440	G	13 x 33mm	0.2mm thick	each	\$80.79	\$80.79	\$68.67	\$68.67
0039442	H	13 x 33mm custom	0.2mm thick	each	\$92.79	\$92.79	\$78.87	\$78.87
0039444	I	30 x 80mm	0.2mm thick	each	\$121.79	\$121.79	\$103.52	\$103.52



ACE TITANIUM FOIL

- Non-perforated
- Sterile

0039435	16 x 25mm	each	\$34.99	\$34.99	\$29.74	\$29.74
0039436	76 x 100mm	each	\$294.49	\$294.49	\$250.32	\$250.32



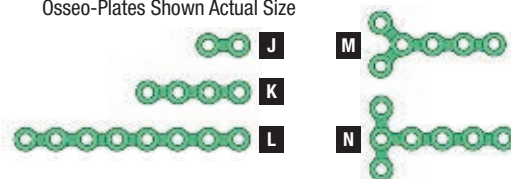
ACE OSSEO-PLATES

ACE offers 5 configurations of Osseo-Plates made from extremely strong yet pliable Grade 3 Commercially Pure Titanium. Each plate is 0.5mm thick and tidodized green. Each hole is countersunk to fit the 1.2mm and 1.5mm ACE TruSCREW Bone Screw.

45437004	J	2 Hole	7mm Long	each	\$39.29	\$39.29	\$33.40	\$33.40
45437001	K	4 Hole	15mm Long	each	\$52.99	\$52.99	\$45.04	\$45.04
45437003	L	8 Hole	31mm Long	each	\$67.79	\$67.79	\$57.62	\$57.62
45437601	M	6 Hole Y-shape	18mm Long	each	\$67.79	\$67.79	\$57.62	\$57.62
45437401	N	7 Hole T-shape	19mm Long	each	\$70.99	\$70.99	\$60.34	\$60.34



Osseo-Plates Shown Actual Size

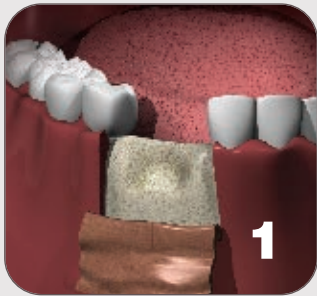




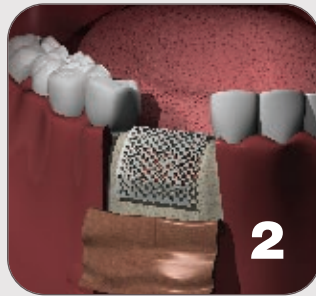
TUTORIALS

COMPLETE TITANIUM MESH GRAFTING

ACE Resorbable Collagen Membranes, Graft Particulate, Titanium Mesh and TruFIX TruSCREW Bone Screws



1 Elevate the periosteal flap and expose the defect area following common surgical procedures.



2 Prior to decorticating the host bone and placing the graft material, mold the titanium mesh to the geometry of the defect.



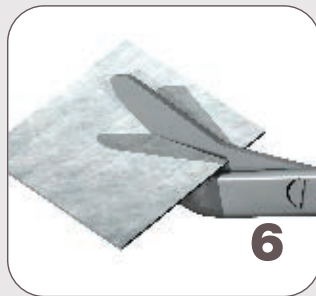
3 Prepare your preferred particulate grafting material such as alloOss® (allograft) or NuOss® (xenograft).



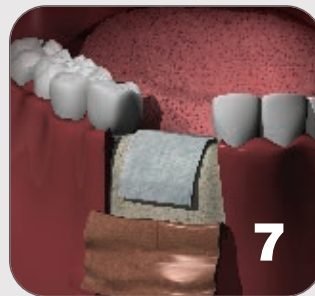
4 Examine the defect. Using a 1.1mm round bur, decorticate the recipient bone in the area and establish fresh bleeding.



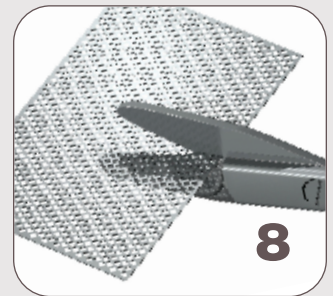
5 Fill the entire defect with your chosen graft material.



6 Cut the conFORM or RCM® Resorbable Collagen Membrane to the defined geometry of the defect.



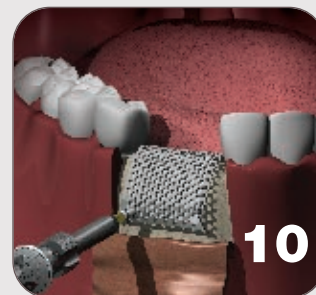
7 Drape the defect with a preferred resorbable collagen membrane such as RCM® or conFORM.



8 Prepare the 0.1mm or 0.2mm thick titanium mesh to the defined geometry of the defect and slightly larger than the RCM® Resorbable Membrane. Cut with Smith Wire Cutting Scissors (p.33).



9 Drape the formed titanium mesh over the defect area. Mark the mesh and host bone through the mesh with an ACE step drill.



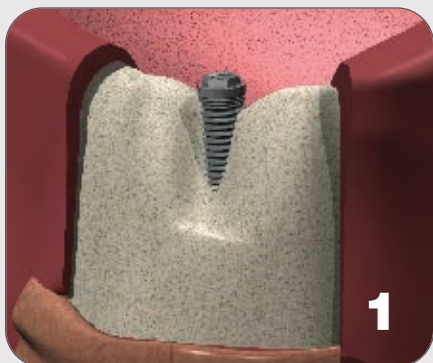
10 Secure the titanium mesh into the recipient bone using appropriate length and diameter TruSCREW Bone Screws.

The procedures and techniques presented throughout this catalog are intended to provide basic reference only and should not be substituted for the complete surgical procedure being performed by a licensed practitioner. A complete understanding and execution of the techniques and procedures presented within this catalog are the full responsibility of the

licensed practitioner. These procedures and techniques are NOT TO BE SUBSTITUTED for the practitioner's complete knowledge, education, experience or for any instrumentation or product instruction for use.

SECURING AN IMPLANT SITE WITH TITANIUM MICRO-MESH

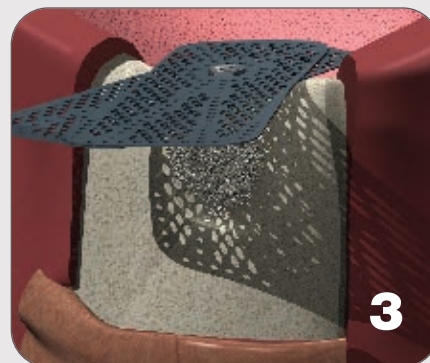
15x30mm Titanium Tenting Mesh with Graft Material, and TruFIX TruSCREW Bone Screws



1 Elevate the periosteal flap from the defect area around the exposed External Hexagon implant.



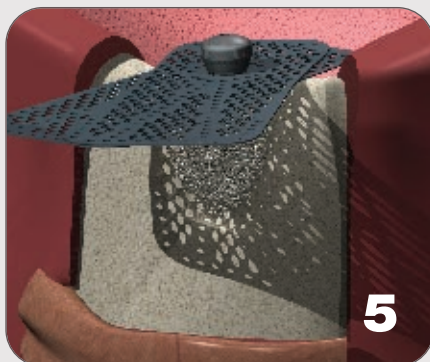
2 Fill the entire defect with your chosen graft material. Use hydrated alloOss® Particulate, alloOss® Putty, NuOss® Particulate or NuOss® Collagen Block.



3 Align the 12-point center locks of the titanium micro-mesh with the top of the 2.7mm external hex implant. If the defect is wider than a single mesh, two (0039440 p.25) Titanium Micro-Mesh can be used (as shown).



4 The 12-Point center of the Titanium Micro Mesh snaps and locks into place when used over a standard 2.7mm external hex implant (as shown). May be used for tenting procedures over the ACE Tenting Screw.



5 Add an implant cover screw or abutment (shown) to hold mesh in place. Don't torque yet to allow adjustments in mesh alignment.



6 Gently bend mesh, contour to desired ridge profile. Once it has been bent into place, fully torque cover screw or abutment.



7 Secure the titanium micro mesh into the recipient bone using appropriate length and diameter TruSCREW Bone Screws.

The procedures and techniques presented throughout this catalog are intended to provide basic reference only and should not be substituted for the complete surgical procedure being performed by a licensed practitioner. A complete understanding and execution of the techniques and procedures presented within this catalog are the full responsibility of the

licensed practitioner. These procedures and techniques are NOT TO BE SUBSTITUTED for the practitioner's complete knowledge, education, experience or for any instrumentation or product instruction for use.

INSTRUMENTS AND KITS



ACE CALIPERS



ACE Castroviejo Calipers - short beak

0800015	A	3-1/4" 0-20mm, straight	each	\$211.99	\$211.99	\$190.79	\$190.79
0800016	B	3-1/4" 0-20mm, 45° angle	each	\$246.79	\$246.79	\$222.11	\$222.11
0800017	C	3-1/4" 0-40mm, straight	each	\$246.79	\$246.79	\$222.11	\$222.11
0800018	D	3-1/2" 0-40mm, 45° angle	each	\$274.99	\$274.99	\$247.49	\$247.49

ACE Castroviejo Calipers - long beak

0800019	E	6-1/2" 0-40mm, straight	each	\$274.99	\$274.99	\$247.49	\$247.49
0800020		6-1/2" 0-40mm, 45° angle	each	\$295.49	\$295.49	\$265.94	\$265.94

ACE Bone Implant Caliper

- 0-20mm

0800050	F	3-1/2" (9cm)	each	\$198.29	\$198.29	\$178.46	\$178.46
---------	----------	--------------	------	----------	----------	----------	----------

ACE Ridge Mapping Caliper

- 0-25mm

0800059	G	6" (15cm)	each	\$260.79	\$260.79	\$234.71	\$234.71
---------	----------	-----------	------	----------	----------	----------	----------

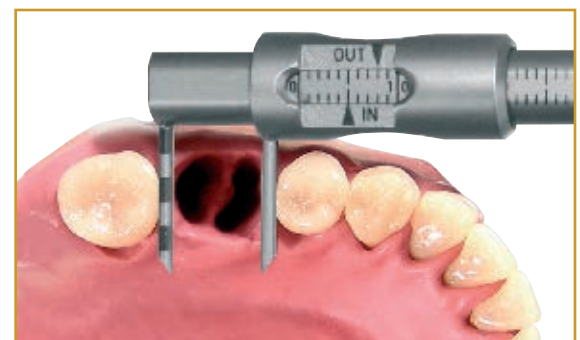
ACE Sliding Caliper

- 0-95mm

0869301	H	5" (13cm)	each	\$258.29	\$258.29	\$232.46	\$232.46
---------	----------	-----------	------	----------	----------	----------	----------



H Allows for measuring and maintaining space and angulation between implants



INSTRUMENTS AND KITS

CALIPERS AND GAUGES

Mitutoyo Digital Caliper

- Push button converts inches to millimeters
- Measure distance, ID (inner diameter) and OD (outer diameter)
- Cannot be autoclaved
- 0-6", 0-150mm

8647A42	A	9" (23cm)	each	\$233.29	\$233.29	\$209.96	\$209.96
---------	----------	-----------	------	----------	----------	----------	----------

ACE Boley Gauge

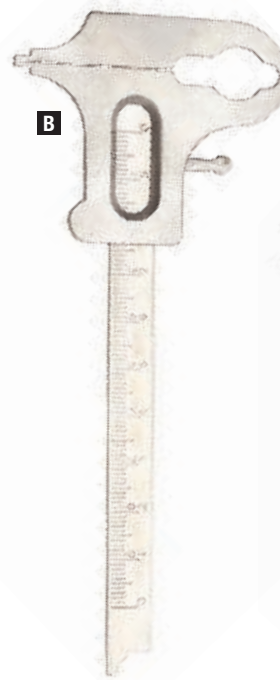
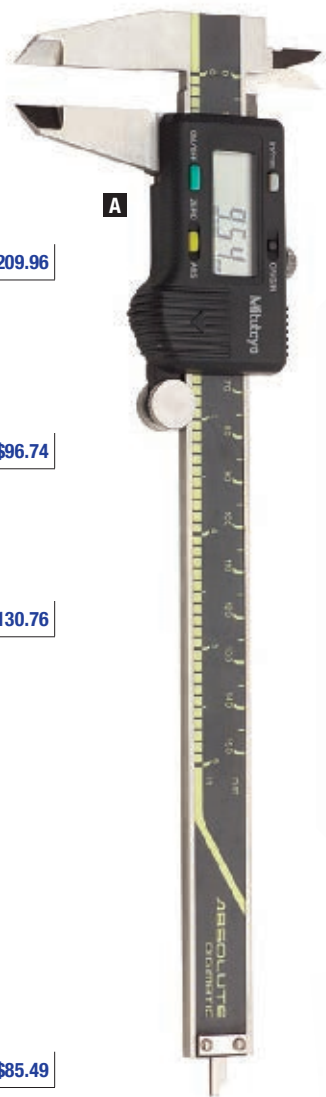
- Marking lines are 1mm, numbered by cm
- Measure distance, ID (inner diameter) and OD (outer diameter)
- 0-100mm

0800010	B	ACE 5-1/2" (14cm)	each	\$107.49	\$107.49	\$96.74	\$96.74
---------	----------	-------------------	------	----------	----------	---------	---------

ACE Jameson Caliper

- Marking lines are 1mm and 1/16"
- Measure distance, and OD (outer diameter)

0800007	C	4" (10cm)	each	\$145.29	\$145.29	\$130.76	\$130.76
---------	----------	-----------	------	----------	----------	----------	----------



ACE PROBES AND GAUGES

ACE Probe

- For measuring bony osteotomies in hard-to-reach areas
- 8, 10, 13, 15, 18mm Markings
- Titanium (6Al-4V-ELI)

6301105	D	6" (15cm)	each	\$94.99	\$94.99	\$85.49	\$85.49
---------	----------	-----------	------	---------	---------	---------	---------

ACE Depth Packing Gauge

- For use with 3.3mm, 3.75mm and 4.0mm self-tapping implants
- Contoured ends allow use as packing instrument and in sinus elevation procedures
- 3.3mm and 4mm end diameters
- 8, 10, 13, 15, 18mm markings • Titanium (6Al-4V-ELI)

7140243	E	6-1/2" (16.5cm)	each	\$117.49	\$117.49	\$105.74	\$105.74
---------	----------	-----------------	------	----------	----------	----------	----------

ACE Implant Depth Gauge with Ball End

- Ball end is useful for examination of bone preparation and in cases where the floor of the bone osteotomy site has been perforated
- Use at the 2.0mm drilling stage
- 7, 8, 10, 13, 15, 18, 20mm markings
- Titanium (6Al-4V-ELI)

9600639	F	ACE, 4" (10cm)	each	\$78.79	\$78.79	\$70.91	\$70.91
---------	----------	----------------	------	---------	---------	---------	---------





INSTRUMENTS AND KITS

ACE GRAFT DELIVERY SYRINGES

- With funnels
- Stainless steel

9800035	3.5mm, curved	each	\$135.29	\$135.29	\$121.76	\$121.76
9800045	4.5mm, curved	each	\$135.29	\$135.29	\$121.76	\$121.76
9600025	5.0mm, straight	each	\$135.29	\$135.29	\$121.76	\$121.76
9800060	6.0mm, curved	each	\$135.29	\$135.29	\$121.76	\$121.76



Syringe openings, available sizes



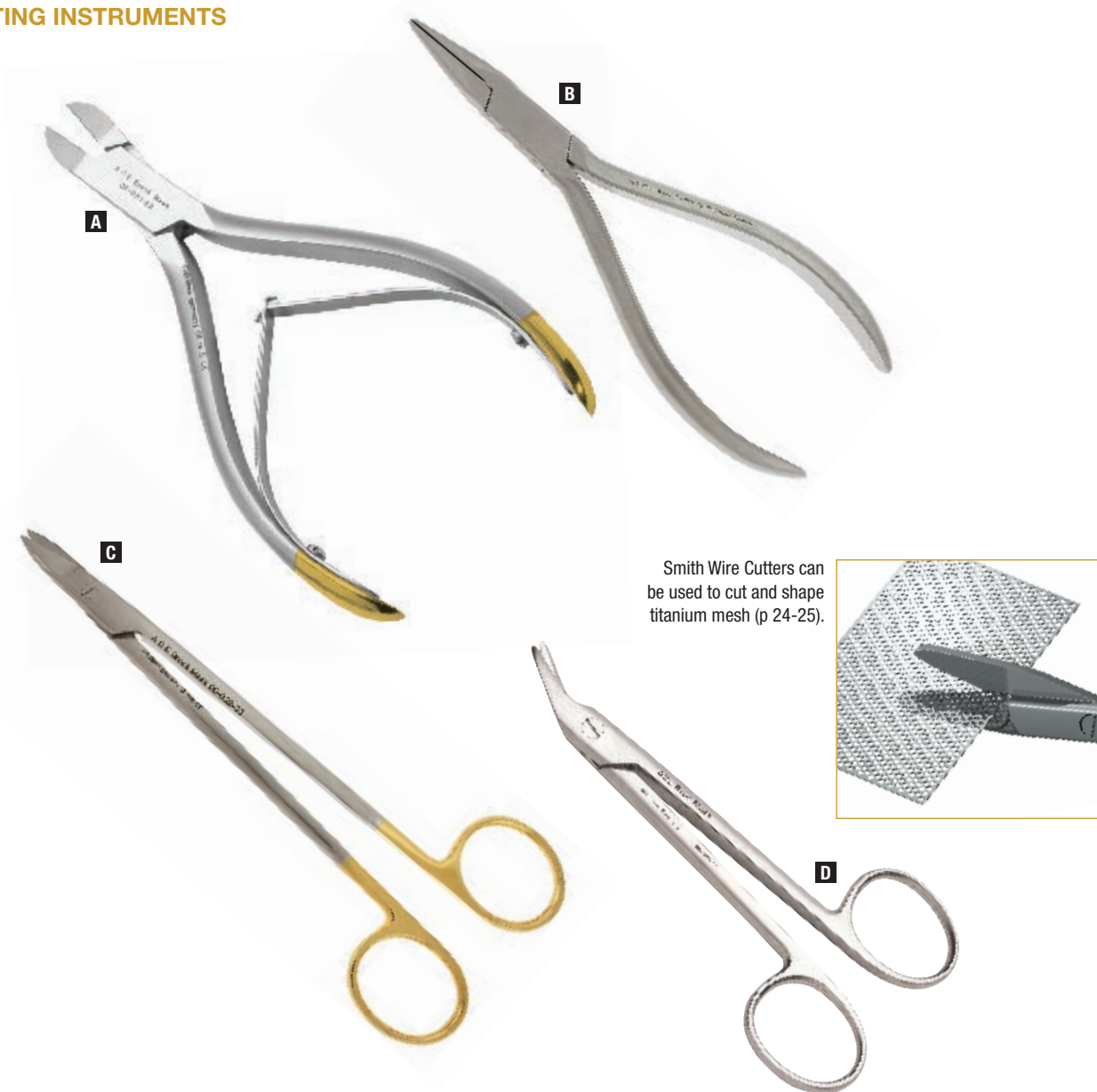
ACE STERILE DISPOSABLE SYRINGES

- Carries material to surgical site
- Single use
- Can be used for delivery of any material to surgical site

0032019	10/pack	\$45.99	\$43.69	\$43.69	\$41.39
---------	---------	---------	---------	---------	---------

INSTRUMENTS AND KITS

ACE GRAFTING INSTRUMENTS



Smith Wire Cutters can be used to cut and shape titanium mesh (p 24-25).

ACE Wire Cutter

0805192	A	ACE WCPU Wire Cutter – TC (Max 0.5)	5" (13cm)	\$142.79	\$142.79	\$128.51	\$128.51
---------	----------	-------------------------------------	-----------	----------	----------	----------	----------

ACE Modeling Plier

5100065	B	Modeling Plier, Point Beak	5-1/4" (13.5cm)	\$85.49	\$85.49	\$76.94	\$76.94
---------	----------	----------------------------	-----------------	---------	---------	---------	---------

ACE Smith Wire Cutting Scissors

0800213		1 blade is serrated	6" (15cm)	\$75.49	\$75.49	\$67.94	\$67.94
0805260	C	1 blade is serrated – TC	7" (18cm)	\$163.79	\$163.79	\$147.41	\$147.41

ACE Wire Cutting Scissors

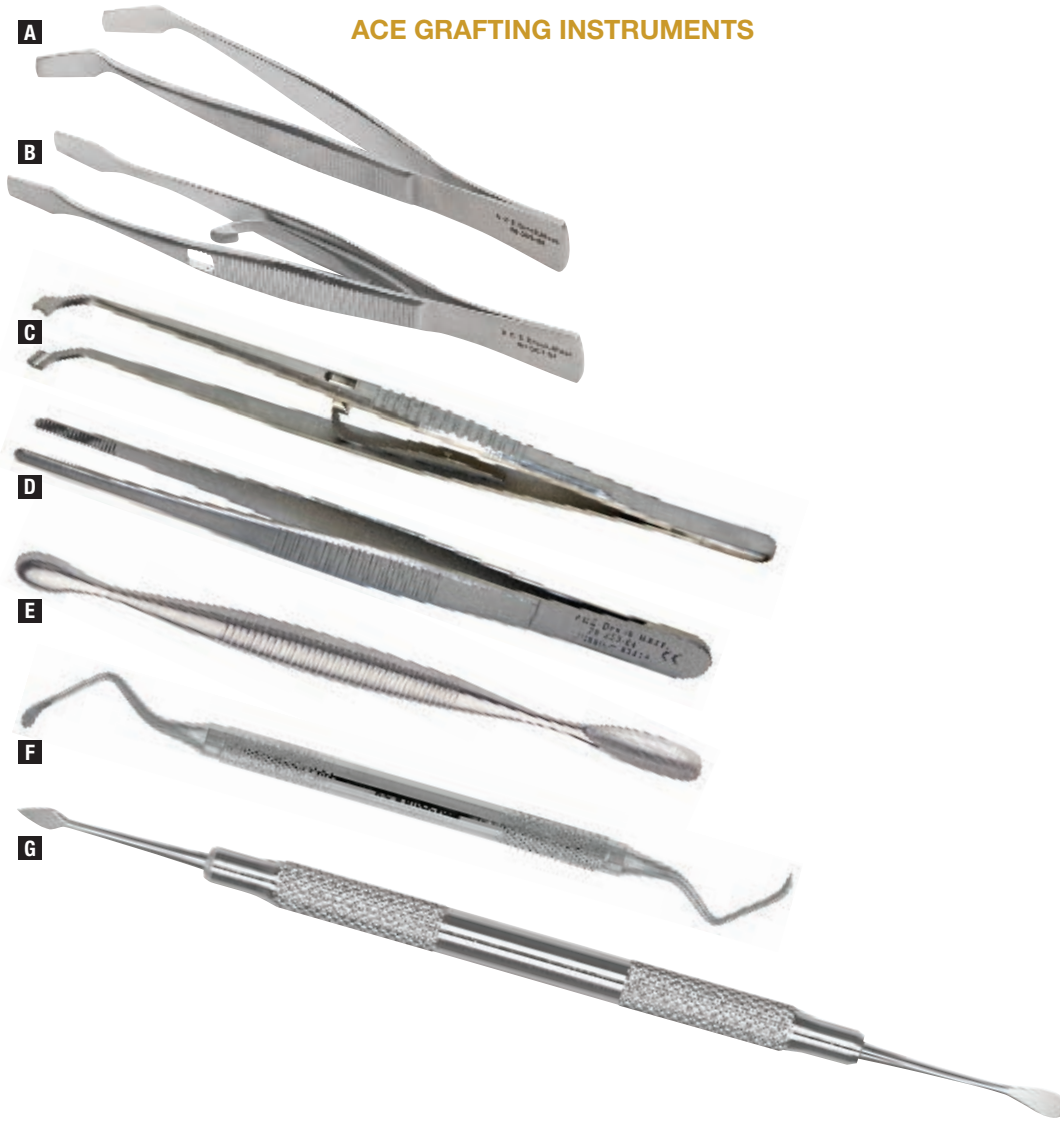
6614052		Wire Cutting Scissors, Economy	4-3/4" (12cm)	\$9.49	\$9.49	\$8.54	\$8.54
0800211	D	Wire Cutting Scissors	4-3/4" (12cm)	\$56.49	\$56.49	\$50.84	\$50.84
0805212		Wire Cutting Scissors – TC	4-3/4" (12cm)	\$151.79	\$151.79	\$136.61	\$136.61

TC = Tungsten Carbide
Ti = Titanium



INSTRUMENTS AND KITS

ACE GRAFTING INSTRUMENTS



ACE Kuehne Membrane Holding Forceps

9600322	A	Kuehne Forceps, Angled, without Lock	4-1/4" (10.5cm)	\$38.99	\$38.99	\$35.09	\$35.09
9600324	B	Kuehne Forceps, Straight, Locking	4-1/4" (10.5cm)	\$71.49	\$71.49	\$64.34	\$64.34
9600326		Kuehne Forceps, Straight, without Lock	4-1/4" (10.5cm)	\$38.99	\$38.99	\$35.09	\$35.09

ACE Titanium Implant Holding Forceps Angled, Contoured

2025367	C	ACE Implant Holding Forceps, Ti	6-1/4" (16cm)	\$211.99	\$211.99	\$190.79	\$190.79
---------	----------	---------------------------------	---------------	----------	----------	----------	----------

ACE Titanium Dressing Forceps

2025364	D	ACE Dressing Forceps, Ti	5-3/4" (14.5cm)	\$107.49	\$107.49	\$96.74	\$96.74
---------	----------	--------------------------	-----------------	----------	----------	---------	---------

ACE Implant Curette

1000216	E	Round Cups, Ti, 5 x 10mm & 6 x 20mm	5-1/2" (14cm)	\$121.29	\$121.29	\$109.16	\$109.16
---------	----------	-------------------------------------	---------------	----------	----------	----------	----------

ACE Lucas Bone Curette

1000224	F	3.5mm Serrated, 5 teeth, Double Ended	6-1/2" (17cm)	\$56.49	\$56.49	\$50.84	\$50.84
1000226		4.5mm Serrated, 7 teeth, Double Ended	6-1/2" (17cm)	\$56.49	\$56.49	\$50.84	\$50.84

ACE Membrane Placement Instrument

0300139	G	ACE Buser Type Elevator	7" (18cm)	\$41.49	\$41.49	\$37.34	\$37.34
---------	----------	-------------------------	-----------	---------	---------	---------	---------

INSTRUMENTS AND KITS

ACE GRAFTING INSTRUMENTS

ACE Bone Graft Holding Forceps are designed with drill relief tips for easier drilling while securely holding the graft



ACE Bone Graft Holding Forceps

9600026	Bone Graft Holding Forceps	8" (20cm)	\$113.79	\$113.79	\$102.41	\$102.41
9600027	A Bone Graft Holding Forceps	6" (15cm)	\$113.79	\$113.79	\$102.41	\$102.41

ACE Bone Holding Forceps

5100017	B Dingman, Heavy Pattern, Slotted Jaw	7-1/2" (19cm)	\$132.29	\$132.29	\$119.06	\$119.06
---------	--	---------------	----------	----------	----------	----------

ACE Retractors for Chin Exposure

0500059	C Chin Retractor	5-1/2" (14cm)	\$179.79	\$179.79	\$161.81	\$161.81
---------	-------------------------	---------------	----------	----------	----------	----------

ACE Anterior Border Stripper

0500074	D Anterior Border Stripper, 10mm Wide Blade	7" (18cm)	\$107.49	\$107.49	\$96.74	\$96.74
---------	--	-----------	----------	----------	---------	---------

ACE Kerrison Rongeur

1000075	E Kerrison Rongeur, 3.5mm Bite, 4" Shaft	5-3/4" (14cm)	\$560.49	\$560.49	\$504.44	\$504.44
---------	---	---------------	----------	----------	----------	----------



INSTRUMENTS AND KITS



ACE SINUS LIFT KIT

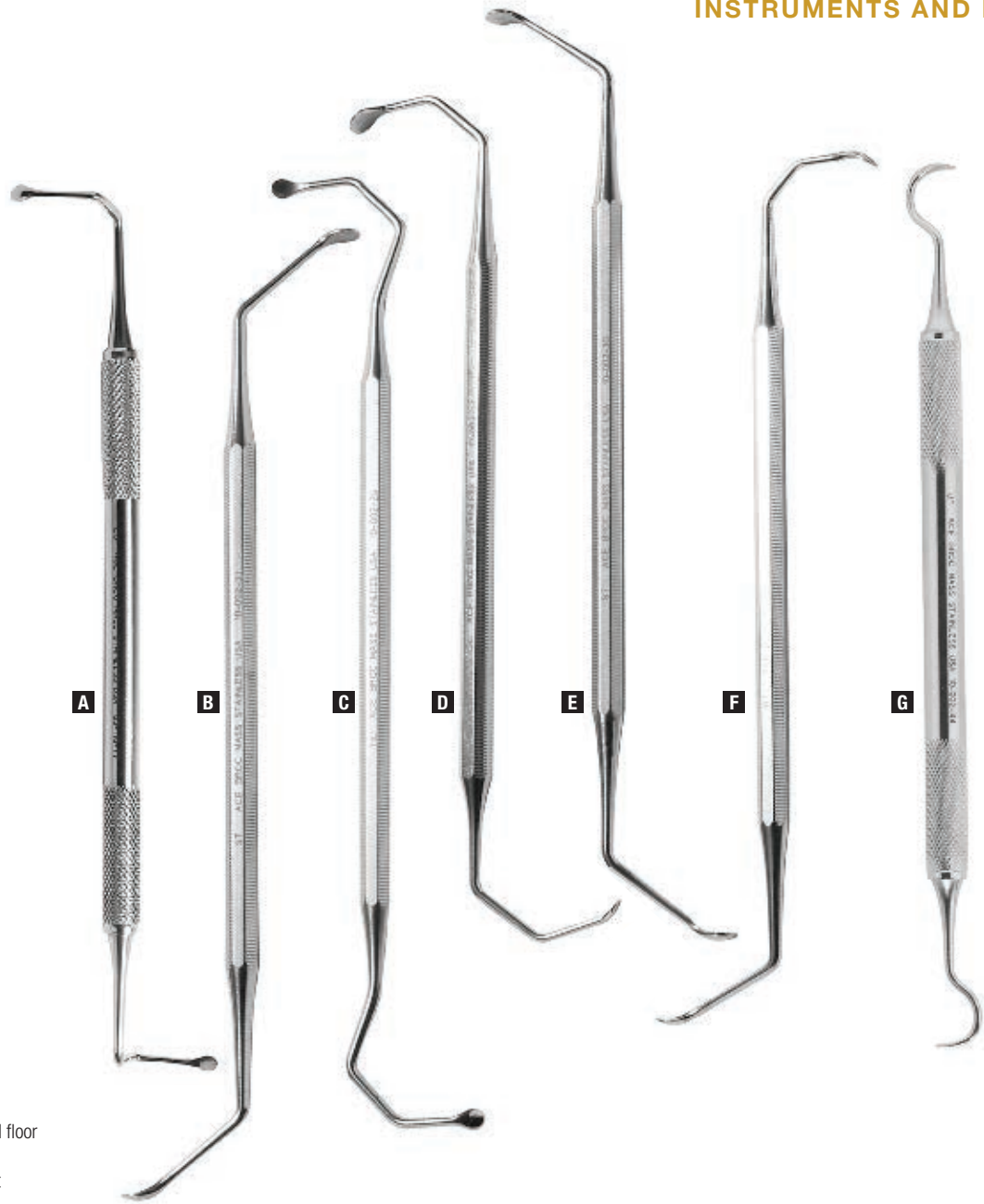
ACE Sinus Lift Kit

0034194	A	Sinus Lift Kit with Tray		\$421.79	\$421.79	\$379.61	\$379.61
---------	----------	--------------------------	--	----------	----------	----------	----------

Kit Includes: (available separately)

7651050	B	Autoclavable Tray		\$163.79	\$155.60	\$155.60	\$147.41
0311088	C	Shepherd Sinus Lift Retractor	7" (18cm)	\$61.29	\$61.29	\$55.16	\$55.16
0311023	D	Freer Periosteal Elevator, strong curve	7-1/2" (19cm)	\$52.49	\$52.49	\$47.24	\$47.24
0311077	E	#3 Clepper Tatum Antralplasty Elevator, DE	6-1/2" (16.5cm)	\$52.49	\$52.49	\$47.24	\$47.24
1000236	F	#1 Sinus Lift Curette, standard bend, DE, 3mm/5mm	7-1/2" (19cm)	\$52.49	\$52.49	\$47.24	\$47.24
1000237	G	#2 Sinus Lift Curette, severe bend, DE, 3mm/5mm	6-1/2" (16.5cm)	\$52.49	\$52.49	\$47.24	\$47.24
7140243	H	Depth/Packing Gauge, DE, Titanium, markings at 8-10-13-15-18mm, 3.3/4mm ends	6-1/2" (16.5cm)	\$117.49	\$117.49	\$105.74	\$105.74

INSTRUMENTS AND KITS



ACE ELEVATOR KIT

Antralplasty Elevator Kit for Sinus and Socket Lift Procedures

- Designed for exploring and walking antral floor in displaced root tip removal
- Instruments have dulled edges to prevent tearing of the membrane

ACE Antralplasty Elevator Kit

0000220	Antralplasty Elevator Kit (Includes E, I, J, K, L, and M)	\$242.99	\$242.99	\$218.69	\$218.69
---------	---	----------	----------	----------	----------

Kit Includes: (available separately)

0311077	A	#3 Clepper Tatum Antralplasty Elevator, DE	6-1/2" (16.5cm)	\$52.49	\$52.49	\$47.24	\$47.24
1000231	B	#2 Clepper Tatum Antralplasty Elevator, DE	6-1/2" (16.5cm)	\$52.49	\$52.49	\$47.24	\$47.24
1000225	C	#1 Antral Curette, DE	6-1/2" (16.5cm)	\$52.49	\$52.49	\$47.24	\$47.24
1000234	D	#3 Antral Curette, DE	5-3/4" (14.5cm)	\$52.49	\$52.49	\$47.24	\$47.24
1000230	E	#1 Clepper Tatum Antralplasty Elevator, DE	6-1/2" (16.5cm)	\$52.49	\$52.49	\$47.24	\$47.24
1000233	F	#2 Antral Curette, DE	6" (15cm)	\$52.49	\$52.49	\$47.24	\$47.24

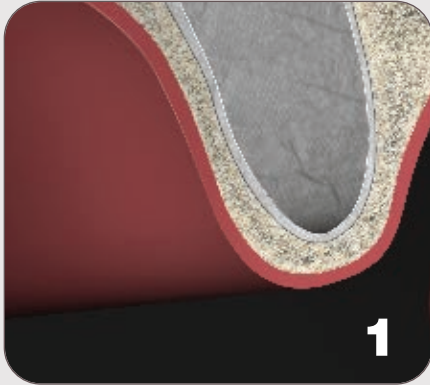
Also Available, not included in the kit

1000244	G	Sinus Lift Spatula Curette, Spoon Tip	6-1/2" (16.5cm)	\$52.49	\$52.49	\$47.24	\$47.24
---------	----------	---------------------------------------	-----------------	---------	---------	---------	---------

TUTORIALS

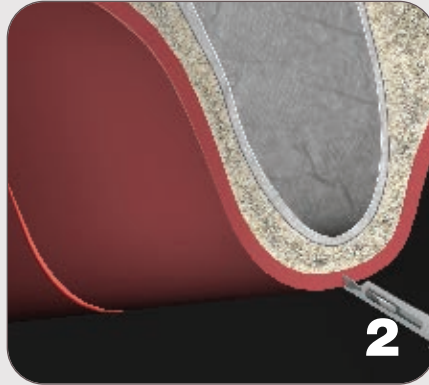
LATERAL SINUS AUGMENTATION PROCEDURE

An excellent way to increase vertical dimension in the posterior maxilla.



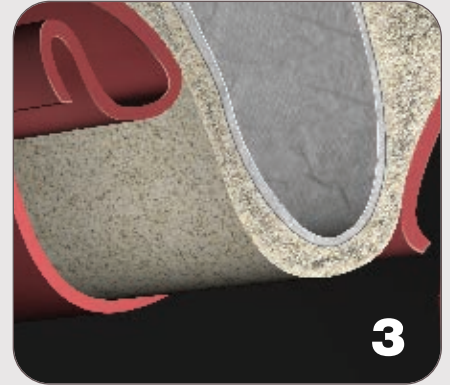
1

Pre-surgical radiographic assessment is crucial for success. A panoramic radiograph and a CT scan allows for cross-sectional evaluation and determination of any pathology within the sinus. The anatomy is also visualized in the CT Scan.

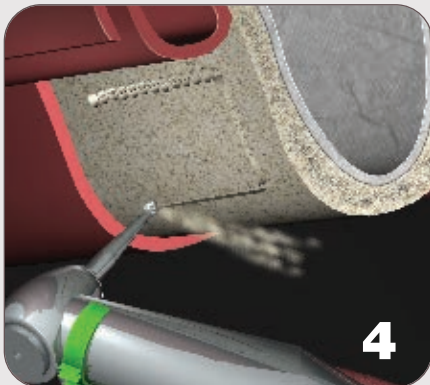


2

Initial incisions and flap reflection allows for complete access to the lateral wall of the sinus. When teeth are present, intercellular incisions are made and a vertical release incision is performed.



3



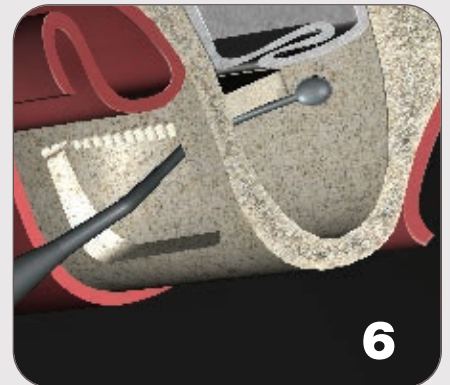
4

Using paintbrush like strokes, a round bur is utilized to prepare the lateral window opening.



5

Using the ACE Sinus Lift Kit (0034194 p.36), careful membrane reflection is performed with the instrumentation provided within these kits.



6

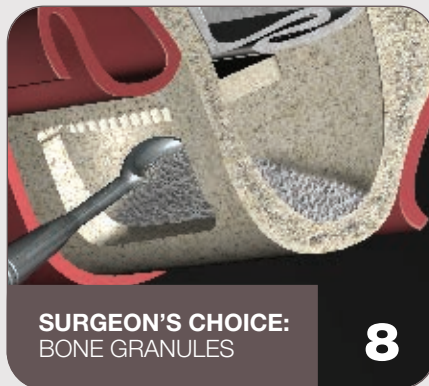
Care is taken to avoid perforation of the membrane and to make sure that reflection is performed along the medial wall. Sufficient reflection should be performed to allow for a 15mm implant fixture.



**SURGEON'S CHOICE:
EXPANDABLE COLLAGEN**

7

NuOss® XC Sinus Self Expanding Bone Graft Composite can be used to place immediately into the sinus cavity. NuOss XC Sinus will begin expanding immediately after coming into contact with blood or sterile saline, filling the sinus cavity.



**SURGEON'S CHOICE:
BONE GRANULES**

8

NuOss or alloOss® particulate bone graft can be prepared and placed into the site using a graft delivery spoon or loaded into a graft delivery syringe.



**SURGEON'S CHOICE:
PRE-FILLED SYRINGE**

9

NuOss DS saves time by delivering xenograft particulate through a pre-loaded delivery syringe. Simply follow the hydration steps required for NuOss DS and deliver directly to the sinus cavity.



10

The bone graft is placed along the medial aspect of the sinus working your way to the lateral wall, completely filling the sinus augmentation cavity.



11

A membrane is then placed over the lateral wall.



SURGEON'S CHOICE:
TACKING IS OPTIONAL

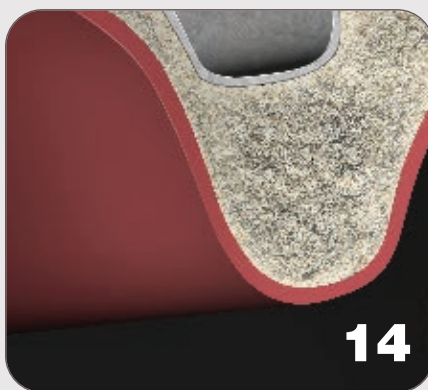
12

TruTACKS from the truFIX kit can be used to fixate the resorbable collagen membrane in place before returning the flap for final suturing.



13

Once the membrane is securely in place, the site is then sutured.



14

After allowing 6-9 months of healing, the host bone is now ready for implants.



15

Use standard implant surgical placement protocols.

The procedures and techniques presented throughout this catalog are intended to provide basic reference only and should not be substituted for the complete surgical procedure being performed by a licensed practitioner. A

complete understanding and execution of the techniques and procedures presented within this catalog are the full responsibility of the licensed practitioner. These procedures and techniques are NOT TO BE SUBSTITUTED

for the practitioner's complete knowledge, education, experience or for any instrumentation or product instruction for use.



INSTRUMENTS AND KITS

ACE SINUS LIFT OSTEOTOME KIT

- Concave tip, sharply honed cutting surface
- Concave tip can be used to carry and place bone grafting material into site
- All osteotomes are 6", 15cm Long
- All osteotomes and trays can be purchased separately



OSTEOTOME SIZE CHART

Osteotome	Implant OD
2.8mm	3.25-3.5mm
3.3mm	3.75-4.0mm
4.35mm	4.75mm
5.0mm	5.75mm

OD = Outside Diameter

See page 43 for a tutorial

ACE Sinus Lift Osteotome Kit - (Concave Tips)

4545000	Set of 11 Osteotomes with Tray	1 kit	\$845.79	\$845.79	\$761.21	\$761.21
---------	--------------------------------	-------	----------	----------	----------	----------

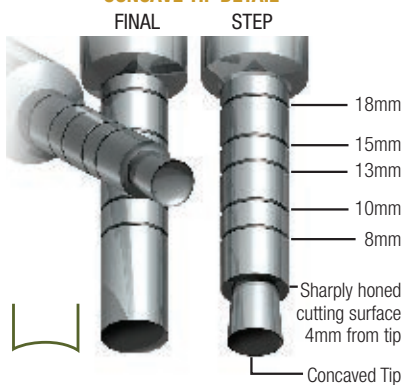
Sinus Lift Osteotome Kit Includes: (available separately)

4545001	Step - 1.6mm/2.0mm	each	\$76.99	\$76.99	\$69.29	\$69.29
4545101	Step - 2.0mm/2.8mm	each	\$76.99	\$76.99	\$69.29	\$69.29
4545201	Step - 2.8mm/3.3mm	each	\$76.99	\$76.99	\$69.29	\$69.29
4546001	Step - 3.3mm/4.0mm	each	\$76.99	\$76.99	\$69.29	\$69.29
4546101	Step - 4.0mm/4.35mm	each	\$76.99	\$76.99	\$69.29	\$69.29
4546301	Step - 4.35mm/5.0mm	each	\$76.99	\$76.99	\$69.29	\$69.29
4545701	Final - 2.8mm	each	\$76.99	\$76.99	\$69.29	\$69.29
4545301	Final - 3.3mm	each	\$76.99	\$76.99	\$69.29	\$69.29
4545401	Final - 4.0mm	each	\$76.99	\$76.99	\$69.29	\$69.29
4546201	Final - 4.35mm	each	\$76.99	\$76.99	\$69.29	\$69.29
4546401	Final - 5.0mm	each	\$76.99	\$76.99	\$69.29	\$69.29
7651060	Autoclavable Tray	each	\$211.99	\$201.39	\$201.39	\$190.79

Also Available, Not Included in the Kit

4546701	Step - 5.0mm/5.4mm	each	\$76.99	\$76.99	\$69.29	\$69.29
4546801	Final - 5.4mm	each	\$76.99	\$76.99	\$69.29	\$69.29

CONCAVE TIP DETAIL



INSTRUMENTS AND KITS

ACE SITE DILATOR KIT

- Convex tip compresses bone, limiting the amount of bone that must be removed from the site
- All implant site dilators are 6", 15cm long
- All implant site dilators and trays can be purchased separately



OSTEOTOME SIZE CHART

Osteotome	Implant OD
2.8mm	3.25-3.5mm
3.3mm	3.75-4.0mm
4.35mm	4.75mm
5.0mm	5.75mm

OD = Outside Diameter

See page 43 for a tutorial

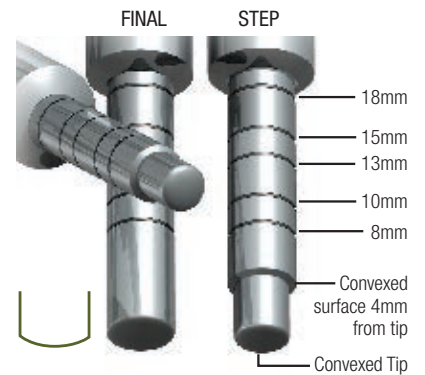
ACE Implant Site Dilator Osteotome Kit - (Convex Tips)

4543000	Set of 11 Osteotomes with Tray	1 kit	\$845.79	\$845.79	\$761.21	\$761.21
---------	--------------------------------	-------	----------	----------	----------	----------

Implant Site Dilating Osteotome Kit Includes: (available separately)

4543001	Step - 1.6mm/2.0mm	each	\$76.99	\$76.99	\$69.29	\$69.29
4543101	Step - 2.0mm/2.8mm	each	\$76.99	\$76.99	\$69.29	\$69.29
4543201	Step - 2.8mm/3.3mm	each	\$76.99	\$76.99	\$69.29	\$69.29
4544001	Step - 3.3mm/4.0mm	each	\$76.99	\$76.99	\$69.29	\$69.29
4544101	Step - 4.0mm/4.35mm	each	\$76.99	\$76.99	\$69.29	\$69.29
4544301	Step - 4.35mm/5.0mm	each	\$76.99	\$76.99	\$69.29	\$69.29
4543701	Final - 2.8mm	each	\$76.99	\$76.99	\$69.29	\$69.29
4543301	Final - 3.3mm	each	\$76.99	\$76.99	\$69.29	\$69.29
4543401	Final - 4.0mm	each	\$76.99	\$76.99	\$69.29	\$69.29
4544201	Final - 4.35mm	each	\$76.99	\$76.99	\$69.29	\$69.29
4544401	Final - 5.0mm	each	\$76.99	\$76.99	\$69.29	\$69.29
7651055	Autoclavable Tray	each	\$211.99	\$201.39	\$201.39	\$190.79

CONVEX TIP DETAIL





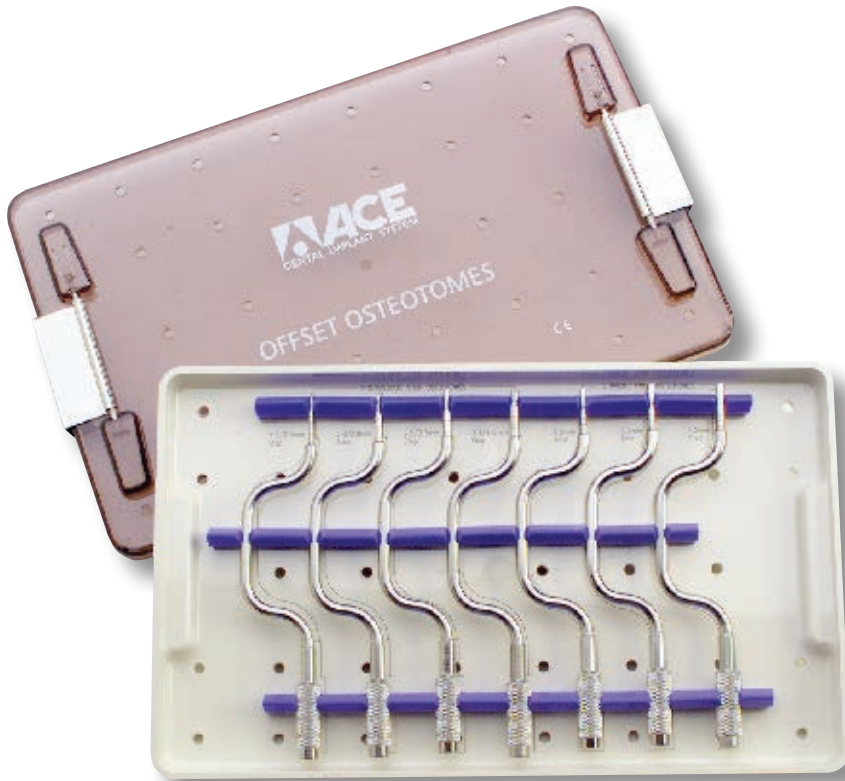
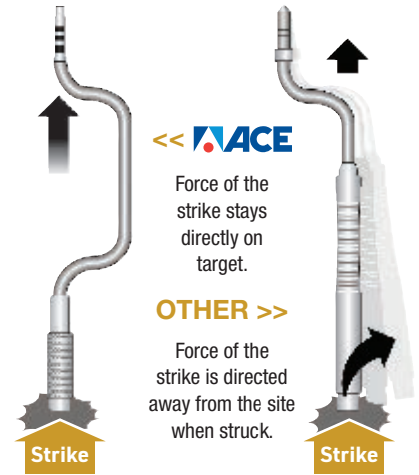
INSTRUMENTS AND KITS

ACE OFFSET OSTEOTOME KIT

- Offset advantage: force of the strike stays directly on target
- Concave tip, sharply honed cutting surface
- Concave tip can be used to carry and place bone grafting material into site
- All osteotomes are 6", 15cm Long
- All osteotomes and trays can be purchased separately

THE ADVANTAGE OF ACE OFFSET OSTEOTOMES

ACE Osteotomes vs Other Offset Osteotomes



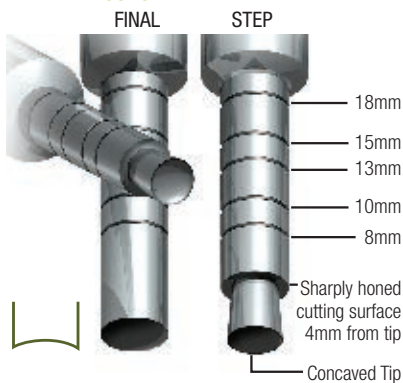
OSTEOTOME SIZE CHART

Osteotome	Implant OD
2.8mm	3.25-3.5mm
3.3mm	3.75-4.0mm
4.35mm	4.75mm
5.0mm	5.75mm

OD = Outside Diameter

See page 43 for a tutorial

CONCAVE TIP DETAIL



ACE Offset Osteotome Kit - (Concave Tips)

4542000	Set of 7 Osteotomes with Tray	1 kit	\$801.99	\$801.99	\$721.79	\$721.79
---------	-------------------------------	-------	----------	----------	----------	----------

Offset Osteotome Kit Includes: (available separately)

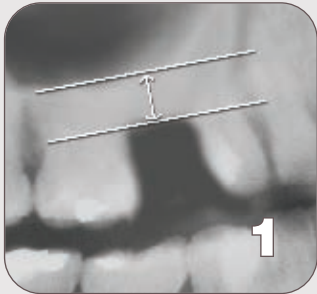
4542001	Step - 1.6mm/2.0mm	each	\$99.79	\$99.79	\$89.81	\$89.81
4542101	Step - 2.0mm/2.8mm	each	\$99.79	\$99.79	\$89.81	\$89.81
4542201	Step - 2.8mm/3.3mm	each	\$99.79	\$99.79	\$89.81	\$89.81
4542301	Step - 3.3mm/4.0mm	each	\$99.79	\$99.79	\$89.81	\$89.81
4542401	Final - 2.8mm	each	\$99.79	\$99.79	\$89.81	\$89.81
4542601	Final - 3.3mm	each	\$99.79	\$99.79	\$89.81	\$89.81
4542801	Final - 4.0mm	each	\$99.79	\$99.79	\$89.81	\$89.81
7651080	Autoclavable Tray	each	\$217.79	\$206.90	\$206.90	\$196.01

Also Available, Not Included in the Kit

4542501	Step - 4.0mm/4.35mm	each	\$99.79	\$99.79	\$89.81	\$89.81
4547101	Step - 4.35mm/5.0mm	each	\$99.79	\$99.79	\$89.81	\$89.81
4542901	Final - 4.35mm	each	\$99.79	\$99.79	\$89.81	\$89.81
4547201	Final - 5.0mm	each	\$99.79	\$99.79	\$89.81	\$89.81

TUTORIAL: SINUS LIFT SITE PREPARATION FOR IMPLANT PLACEMENT

An alternative method for preparing a Ø4.3mm – Ø4.8mm implant site



1
A minimum of 5-6mm of bone is needed between the alveolar crest and the maxillary sinus floor.



2
Initial incisions and flap reflection is made to allow complete access to the implant site.



3
Prepare the implant site by inserting a Ø1.6mm/2.0mm Step Sinus Lift Osteotome until it reaches the sinus floor. Continue each step, enlarging the osteotomy to the chosen implant diameter.



4
Insert the next Ø2.0mm/2.8mm Step Sinus Lift Osteotome until it reaches the sinus floor. Continue each step, enlarging the osteotomy to the chosen implant diameter.



5
Insert the Ø2.8mm/3.3mm Step Sinus Lift Osteotome until it reaches the sinus floor. Continue each step, enlarging the osteotomy to the chosen implant diameter.



6
Insert the Ø3.3mm/4.0mm Step Sinus Lift Osteotome until it reaches the sinus floor. Continue each step, enlarging the osteotomy to the chosen implant diameter.



7
Secure the final Ø4.0mm Straight Sinus Lift Osteotome using tight finger control in order to limit vertical movement. Insert into the implant site until it reaches the sinus floor. Tap lightly to crack the sinus floor elevating the sinus floor and scheiderian membrane in "Trap Door Fashion."



8
All autogenous bone collected using the unique multiple cutting surfaces of the pilot osteotomes will be pushed into the space created between the floor and the membrane. The site is now prepared for inserting a Ø4.3mm – Ø4.8mm Dental implant. For other sized implants, fewer or additional steps and final osteotomes are used.



9
As required, autogenous bone or bone graft mix can be added to the osteotomy. The ACE Autograft (see page 56) can be used to obtain an autogenous bone graft mix.



10
Placement of the appropriate length and diameter Implant will utilize the newly formed bone depth and push the sinus membrane lifting the sinus floor and membrane into the sinus cavity.

OSTEOTOME SIZE CHART	Select Implant Diameter, Use Each Osteotome with ●				
	Ø3.25mm-Ø3.6mm	Ø3.7mm-Ø4.2mm	Ø4.3mm-Ø4.8mm	Ø4.9mm-Ø5.3mm	Ø5.4mm-Ø5.75mm
1.6 / 2.0 mm STEP	●	●	●	●	●
2.0 / 2.8 mm STEP	●	●	●	●	●
2.8 / 3.3 mm STEP		●	●	●	●
3.3 / 4.0 mm STEP			●	●	●
4.0 / 4.35 mm STEP				●	●
4.35 / 5.0 mm STEP					●
FINAL OSTEOTOME	● 2.8mm	● 3.3mm	● 4.0mm	● 4.35mm	● 5.0mm

For Larger Implants: For placement of larger implants (3.75mm, 4.0mm, 4.75mm) widen the diameter of the osteotomy by progressively increasing the osteotomes diameter until the desired opening is achieved. See above for osteotome-to-implant size chart.

The procedures and techniques presented throughout this catalog are intended to provide basic reference only and should not be substituted for the complete surgical procedure being performed by a licensed practitioner. A complete understanding and execution of the techniques and procedures presented within

this catalog are the full responsibility of the licensed practitioner. These procedures and techniques are NOT TO BE SUBSTITUTED for the practitioner's complete knowledge, education, experience or for any instrumentation or product instruction for use.



INSTRUMENTS AND KITS



ACE RIDGE EXPANDING KIT

Simplifying the Treatment of Atrophic Maxillary or Mandibular Ridges

- Discover a safe, controllable way to widen a thin questionable ridge to one capable of accommodating an implant up to 4.5mm without compromising cortical bone.
- The slowly revolving dilators of increasing diameter gently widen the bone in a risk free procedure to the exact depth and direction of the final implant.
- After each dilator is inserted, allow 30-60 seconds before removing it. This allows time for the elasticity of the bone to respond.
- Laser markings provide accurate guidance for the placement of implants into the newly expanded ridge.



ACE Ridge Expanding Kit

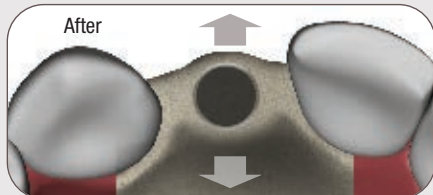
05560000	Set of 4 with surgical kit	each	\$652.99	\$652.99	\$587.69	\$587.69
----------	----------------------------	------	----------	----------	----------	----------

Kit Components (available separately)

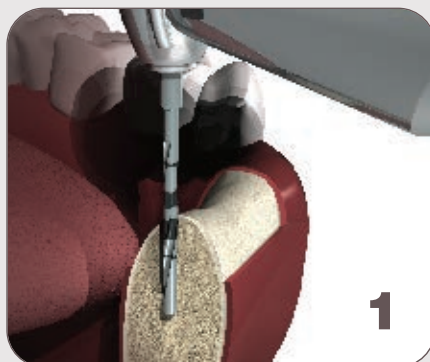
05560201	2.5mm Expander	each	\$57.29	\$57.29	\$51.56	\$51.56
05560301	3.1mm Expander	each	\$57.29	\$57.29	\$51.56	\$51.56
05560401	3.6mm Expander	each	\$57.29	\$57.29	\$51.56	\$51.56
05560501	4.3mm Expander	each	\$57.29	\$57.29	\$51.56	\$51.56
04973401	Connection driver tool (Hex), for CA handpiece	each	\$107.99	\$107.99	\$91.79	\$91.79
9600228	Universal ratchet	each	\$162.79	\$162.79	\$138.37	\$138.37
20155811	Driver extender (Hex)	each	\$107.99	\$107.99	\$97.19	\$97.19
9600449	Square titanium bowl	each	\$111.29	\$111.29	\$100.16	\$100.16
20195012	Autoclavable tray	each	\$140.79	\$140.79	\$119.67	\$119.67

RIDGE EXPANDING PROCEDURE

Simplifying the treatment of atrophic maxillary or mandibular ridges.



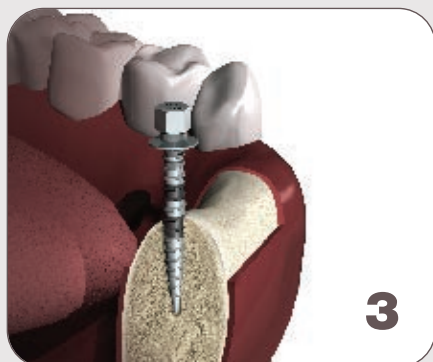
This technique takes advantage of the innate elasticity and flexibility of bone. Through a series of progressively wider expanders, SLOW, STEADY pressure is created as the expander advances the alveolar bone without raising a complete flap, allowing an implant to be placed with minimal ridge splitting.



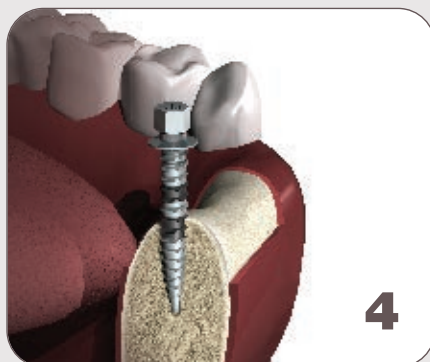
Prepare the osteotomy for ridge expansion using a Pilot Step Drill. Drill an initial osteotomy at the location of the expansion and final implant, drill to implant depth.



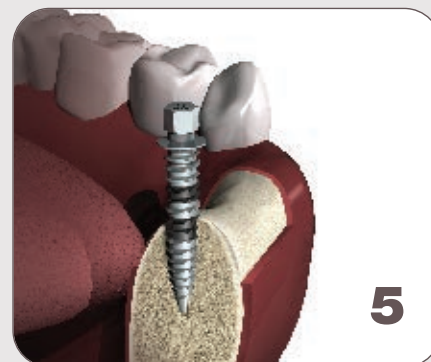
Use either a contra-angle or hand driver tool to drive the expanders. Using the 2.5mm expander, tap into the prepared pilot hole to the appropriate implant length. Drilling speed should be 25 rpm.



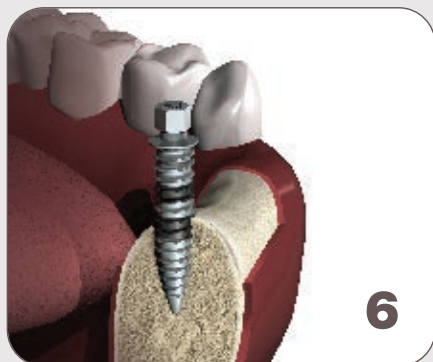
Using the laser markings provided, insert to match the implant's length.



Use the 3.1mm expander next and increase the size of the osteotomy. Drive the expander to appropriate implant length. This is your final expander when placing a 3.75mm implant. Drilling speed should be 25 rpm.



Use the 3.6mm as the final expander when placing a 4.1mm implant. Drive the expander to appropriate implant length. Drilling speed should be 25 rpm.



If placing a 4.75-5.0mm implant, continue with the 4.3mm bone expander. Drive the expander to appropriate implant length. Drilling speed should be 25 rpm.



Insert the appropriate size implant into the osteotomy, which now has a compressed bony interface. Seat the desired implant and close soft tissue.

The procedures and techniques presented throughout this catalog are intended to provide basic reference only and should not be substituted for the complete surgical procedure being performed by a licensed practitioner. A complete understanding and execution of the techniques and procedures presented within this catalog are the full responsibility of the licensed practitioner. These procedures and techniques are NOT TO BE SUBSTITUTED for the practitioner's complete knowledge, education, experience or for any instrumentation or product instruction for use.



INSTRUMENTS AND KITS



ACE RIDGE EXPANDING CHISEL KIT

- All Ridge Expanding Chisels are 6", 15cm
- All chisels and tray may be purchased separately.
- Markings at 8, 10, 13, 15 and 18mm



ACE Ridge Expanding Chisel Kit

Set of 4 with tray and handle

4544700	Chisel kit	kit	\$353.79	\$353.79	\$318.41	\$318.41
---------	------------	-----	----------	----------	----------	----------

Kit Components (available separately)

4544701	3.0 mm Ridge Chisel	each	\$75.99	\$75.99	\$68.39	\$68.39
4544801	4.0 mm Ridge Chisel	each	\$75.99	\$75.99	\$68.39	\$68.39
4544901	5.0 mm Ridge Chisel	each	\$75.99	\$75.99	\$68.39	\$68.39
4544501	9.5 mm Ridge Chisel	each	\$75.99	\$75.99	\$68.39	\$68.39
4541501	Chisel Handle (Uses 1.25mm Hex Driver)	each	\$59.29	\$59.29	\$53.36	\$53.36
7651090	Autoclavable Tray	each	\$96.79	\$91.95	\$91.95	\$87.11

SINGLE STAGE RIDGE SPLIT



Thin anterior maxillary ridge requiring expansion. An initial incision and flap reflection is made to allow access to the ridge.

Small diameter pilot drill is introduced to mark implant site.

(Option for Soft Bone) An initial crest osteotomy can be started with an ACE Mini Blade (7866400).

Vertical osteotomy cuts performed with Ridge Expanding Chisel through the buccal cortex in an oblique fashion followed by horizontal osteotomy at ridge crest.

ACE Site Dilator can be used to prepare the expanded osteotomy for implant placement.

Implant osteotomy site is completed using chosen implant protocols. Implant in place; labial ridge preserved.

Reference Article: Palti A. Ridge Splitting and Implant Techniques for the Anterior Maxilla. Dental Implantology Update 2003; Volume 14, Number 4.

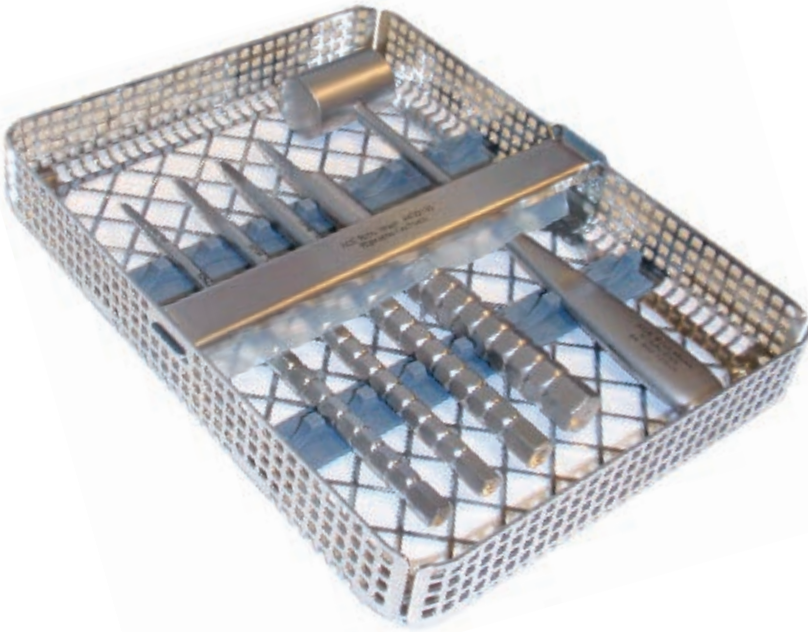
The procedures and techniques presented throughout this catalog are intended to provide basic reference only and should not be substituted for the complete surgical procedure being performed by a licensed practitioner. A complete understanding and execution of the techniques and procedures

presented within this catalog are the full responsibility of the licensed practitioner. These procedures and techniques are NOT TO BE SUBSTITUTED for the practitioner's complete knowledge, education, experience or for any instrument or product instruction for use.

INSTRUMENTS AND KITS

ACE BONE SPREADER OSTEOTOME KIT

- Single end handle can be tapped with a mallet.
- Markings at 13mm, 16mm and 19mm.
- D-contoured tips to avoid fracturing weaker boney wall.
- Instruments and tray are Stainless Steel.



ACE Bone Spreader Osteotome Kit

Set of 4 with mallet and tray

4542106	Bone Spreader Osteotome Kit	kit	\$486.49	\$486.49	\$437.84	\$437.84
---------	-----------------------------	-----	----------	----------	----------	----------

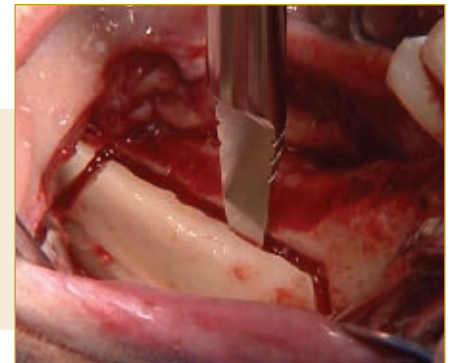
Bone Spreader Osteotomes and Accessories (available separately)

4542102	4.3mm 27mm scoop	each	\$107.99	\$107.99	\$97.19	\$97.19
4542103	5.45mm 26mm scoop	each	\$107.99	\$107.99	\$97.19	\$97.19
4542104	7.5mm 26mm scoop	each	\$107.99	\$107.99	\$97.19	\$97.19
4542105	10.0mm 27mm scoop	each	\$107.99	\$107.99	\$97.19	\$97.19
6400312S	Surgical mallet, 6-1/2" (16.5cm)	each	\$85.49	\$85.49	\$76.94	\$76.94
9400036	Instrument tray, 175 x 140 x 24mm	each	\$142.79	\$142.79	\$128.51	\$128.51

Especially designed for taking Chin and Ramus monocortical block grafts.

In Use: Here the Bone Spreader Osteotome is in place, separating the block graft from the ramus on the mandible. The site was prepared and the crest burnished. The crest is then perforated to outline the graft using a .75mm round bur. The outline should be 4-5mm medial from the buccal plate. The length of the graft is determined using a caliper.

A 702L bur is used to connect the perforations to the length of the graft. Vertical anterior and posterior cuts are made with the 702L bur 10-12mm in length. At the vertical depth, the buccal plate is scored using a #8 round bur. The block graft is out-fractured using the bone spreader osteotome.

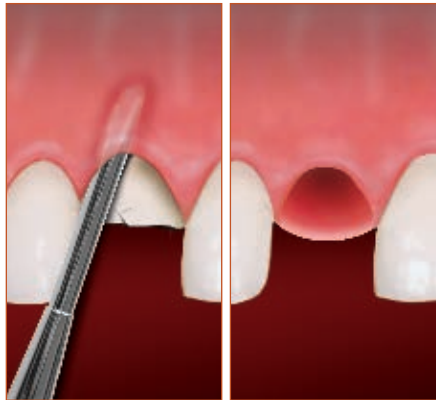




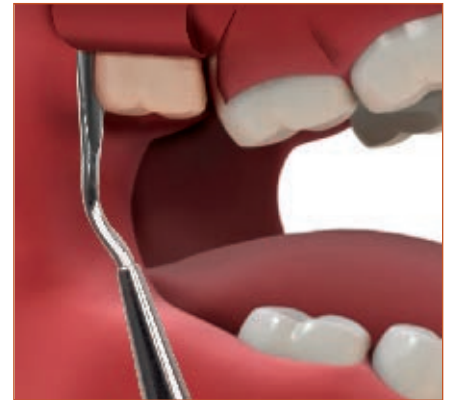
INSTRUMENTS AND KITS

ACE PERIODONTAL LIGAMENT/LUXATING ELEVATOR KIT

- Single end handle can be tapped with a mallet.
- Instruments and tray are stainless steel.
- Components can be purchased separately.



In Use: Straight Blade Periosteal Elevator (blue handle 4547401) is removing the ligament attachment from the root of the tooth and the alveolar housing.



In Use: The Angled IN Periosteal Elevator (gold handle 4547601) is used to loosen and remove difficult or impacted 3rd molars.

Developed in conjunction with Dr. Michael Zide, Fort Worth, TX

ACE Periodontal Ligament/Luxator Elevator Kit

4547111	A	Periodontal Elevator Kit	kit	\$734.99	\$734.99	\$661.49	\$661.49
---------	----------	--------------------------	-----	----------	----------	----------	----------

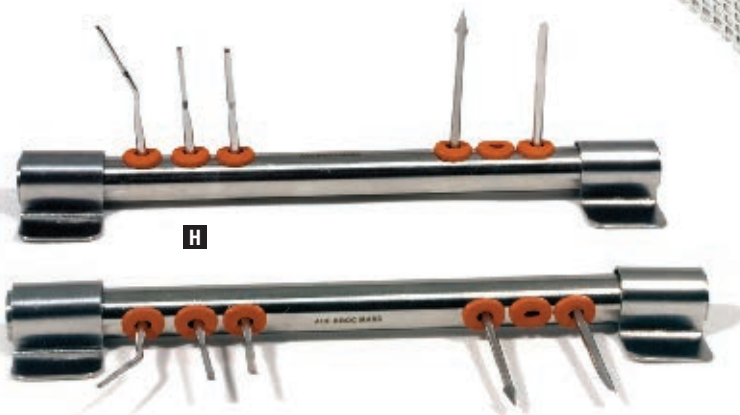
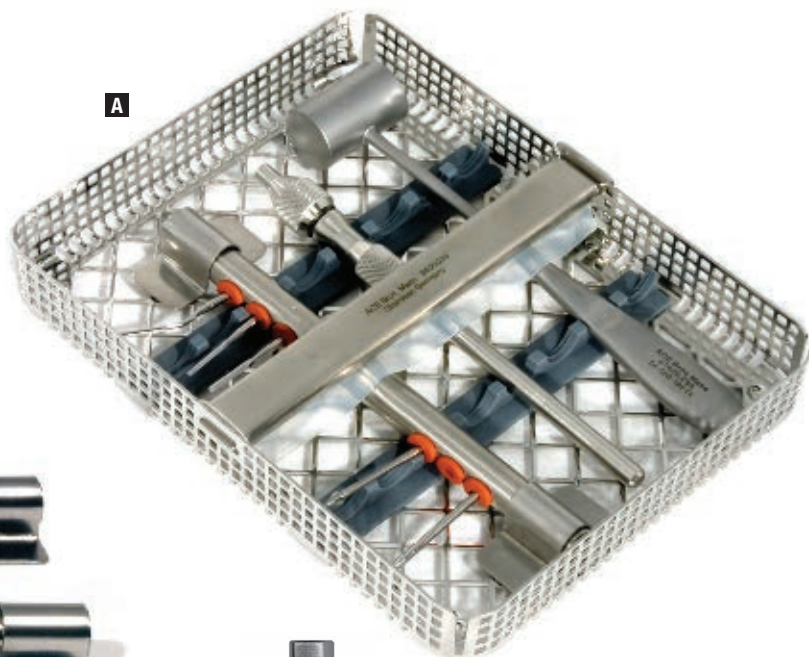
Periodontal Ligament/Luxator Elevator Kit Includes: (available separately)

4547701	B	Elevator, brown, angled "OUT"	each	\$120.29	\$120.29	\$108.26	\$108.26
4547901	C	Elevator, green, curved "OUT"	each	\$120.29	\$120.29	\$108.26	\$108.26
4547401	D	Elevator, blue, straight 2.5mm	each	\$120.29	\$120.29	\$108.26	\$108.26
4547501	E	Elevator, red, arrow tip	each	\$120.29	\$120.29	\$108.26	\$108.26
4547601	F	Elevator, gold, angled "IN"	each	\$120.29	\$120.29	\$108.26	\$108.26
6400312S		Surgical mallet, 6-1/2" (16.5cm)	each	\$85.49	\$85.49	\$76.94	\$76.94
9400036		Instrument tray, 175 x 140 x 24mm	each	\$142.79	\$142.79	\$128.51	\$128.51

INSTRUMENTS AND KITS

ACE PERIOTOME HANDLE & BLADES KIT

- Periotome is used to remove ligament attachment from the root of the tooth and the alveolar housing.
- Single end handle can be tapped with a mallet or used with hand pressure.
- Includes 6-Blade Storage Holder: stands up for easy access during procedures and folds flat for sterilization and storage.
- Components can be purchased separately.



In Use: Periotome is removing the ligament attachment from the root of the tooth and the alveolar housing.



ACE Periotome Kit

3441770	A	Periotome Kit	kit	\$398.29	\$398.29	\$358.46	\$358.46
---------	----------	---------------	-----	----------	----------	----------	----------

Periotome Kit Includes: (available separately)

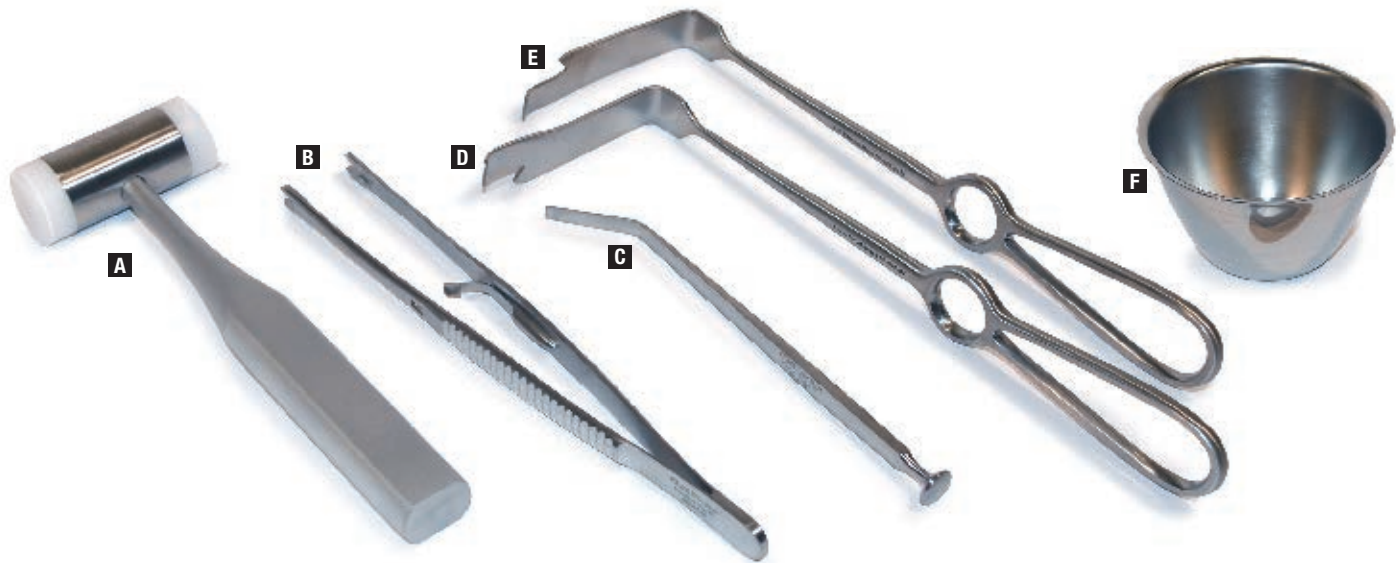
16901001	B	Single-end handle only, 6" (15cm)	each	\$142.79	\$142.79	\$128.51	\$128.51
3441651	C	P3, 1.5mm, angled, 1.75" (4.5cm)	each	\$54.79	\$54.79	\$49.31	\$49.31
3441631	D	P1, 2mm, straight, 1.5" (4cm)	each	\$54.79	\$54.79	\$49.31	\$49.31
3441641	E	P2, 1.5mm, straight, 1.5" (4cm)	each	\$54.79	\$54.79	\$49.31	\$49.31
3441691	F	2.5mm, straight, semi rigid, 1.5" (4cm)	each	\$54.79	\$54.79	\$49.31	\$49.31
3441661	G	Arrow tip	each	\$54.79	\$54.79	\$49.31	\$49.31
6400312S		Surgical mallet, 6-1/2" (16.5cm)	each	\$85.49	\$85.49	\$76.94	\$76.94
3441665	H	Blade storage holder, 6" (15.2cm)	each	\$65.79	\$65.79	\$59.21	\$59.21
9400036		Instrument tray, 175 x 140 x 24mm	each	\$142.79	\$142.79	\$128.51	\$128.51

Tier Pricing Details see inside front cover

Regular Price Member Price Premier Price Premier+ Price



INSTRUMENTS AND KITS



ACE MISCH RAMUS GRAFT INSTRUMENT KITS

Suggested Kit: following items sold individually (6 items total)

ACE Misch Ramus Graft Instrument Kit

6400307	A	Mallet with Plastic Facings	8" (20cm)	\$107.49	\$107.49	\$96.74	\$96.74
9600026	B	Bone Graft Holding Forceps	8" (20cm)	\$113.79	\$113.79	\$102.41	\$102.41
0501220	C	Flat Chisel with 45° Angle, 5mm Wide	6" (15cm)	\$71.49	\$71.49	\$64.34	\$64.34
0502057	D	Misch Ramus Retractor, Left, Curved Down	8-1/2" (21cm)	\$126.79	\$126.79	\$114.11	\$114.11
0502056	E	Misch Ramus Retractor, Right, Curved Down	8-1/2" (21cm)	\$126.79	\$126.79	\$114.11	\$114.11
0531007	F	Iodine/Oil Cup, 6 oz.	3-1/4" x 2"	\$8.79	\$8.79	\$7.91	\$7.91



ACE MISCH SYMPHYSIS GRAFT INSTRUMENT KITS

Suggested Kit: following items sold individually (8 items total)

ACE Misch Symphysis Graft Instrument Kit

04948401	G	Trephine Bur, CA, 5.25mm ID, 32mm TL		\$90.29	\$90.29	\$81.26	\$81.26
04949501	H	Trephine Bur, HP, 6mm ID, 49mm TL		\$90.29	\$90.29	\$81.26	\$81.26
RCP8A	I	#8 Vertical Condenser with 5mm Markings	6" (15cm)	\$30.79	\$30.79	\$27.71	\$27.71
0501220	J	Flat chisel with 45° angle, 5mm wide	6" (15cm)	\$71.49	\$71.49	\$64.34	\$64.34
0502017	K	Cottle Nasal Chisel 6mm	6-1/4" (16cm)	\$71.49	\$71.49	\$64.34	\$64.34
9600026	L	Bone Graft Holding Forceps	8" (20cm)	\$113.79	\$113.79	\$102.41	\$102.41
6400307	M	Mallet with Plastic Facings	8" (20cm)	\$107.49	\$107.49	\$96.74	\$96.74
0531007	N	Iodine or Oil Cup, 6 oz.	3-1/4" x 2"	\$8.79	\$8.79	\$7.91	\$7.91

INSTRUMENTS AND KITS

ACE BLADE HANDLES

#3 Flat Blade Handles

- For surgical blades 10 through 15

0030992	A	5" with metric markings	each	\$15.29	\$14.53	\$14.53	\$13.76
0030993		5"	each	\$14.29	\$13.58	\$13.58	\$12.86

#5 Round-Style Blade Handles

- For surgical blades 10 through 15

0030995	B	6-1/4" straight	each	\$37.29	\$35.43	\$35.43	\$33.56
0039356	C	5-1/2" angled 45°	each	\$47.29	\$44.93	\$44.93	\$42.56
0039358	D	5-3/4" angled 45° universal <i>Blade may be reversed to approach the surgical site from either direction</i>	each	\$47.29	\$44.93	\$44.93	\$42.56
0039360		5-1/2" angled 45° reversed <i>For blade placement on the side</i>	each	\$47.29	\$44.93	\$44.93	\$42.56

#7 Flat Blade Handles

- For surgical blades 10 through 15

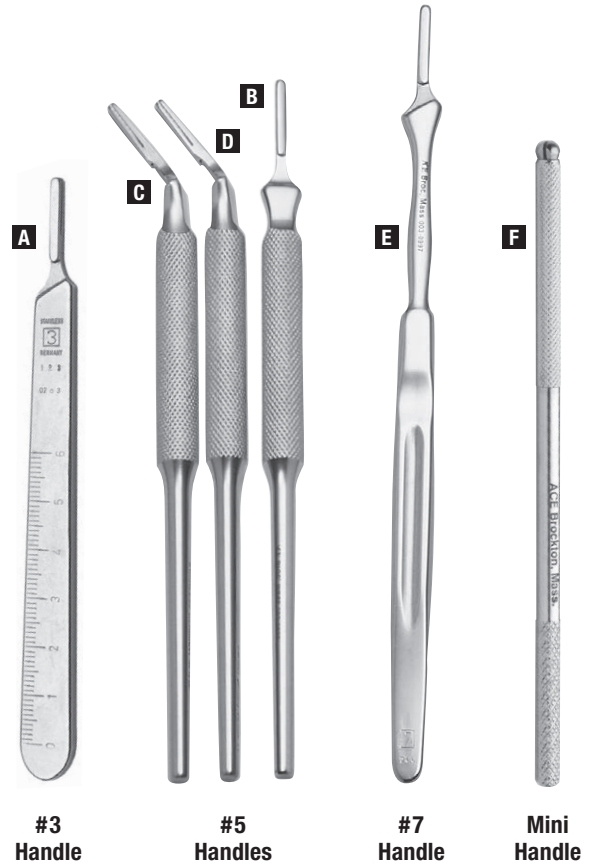
0030997	E	6-1/2" straight	each	\$23.79	\$22.60	\$22.60	\$21.41
---------	----------	-----------------	------	---------	---------	---------	---------

ACE MINI BLADE HANDLES

- For miniature surgical blades only

Mini Blade Handles

7861330		4" round knurled	each	\$24.79	\$23.55	\$23.55	\$22.31
7861350	F	5" round knurled	each	\$24.79	\$23.55	\$23.55	\$22.31
7861320		6" round knurled	each	\$24.79	\$23.55	\$23.55	\$22.31



ACE STERILE SURGICAL BLADES

Carbon Steel

0036112	#12	100/box	\$29.99	\$28.49	\$28.49	\$26.99
0036312	#12D	100/box	\$40.29	\$38.28	\$38.28	\$36.26
0036115	#15*	100/box	\$26.29	\$24.98	\$24.98	\$23.66
0036315	#15C	100/box	\$28.99	\$27.54	\$27.54	\$26.09

* the tip of the 15* blade is slightly different than a standard 15

Stainless Steel

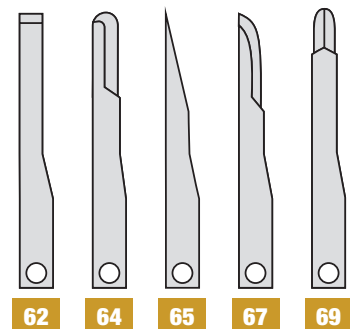
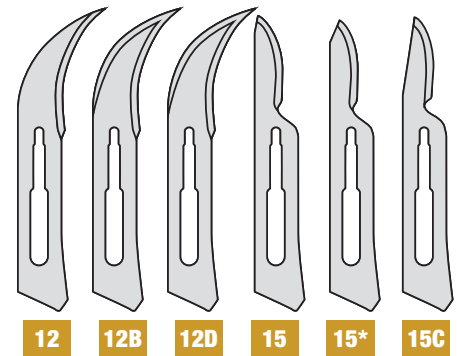
0037215	#15*	100/box	\$28.99	\$27.54	\$27.54	\$26.09
0037315	#15C	100/box	\$28.99	\$27.54	\$27.54	\$26.09

* the tip of the 15* blade is slightly different than a standard 15

ACE STERILE MINI BLADES

Mini Stainless Steel

7866200	#62	10/pkg	\$27.29	\$25.93	\$25.93	\$24.56
7866400	#64	10/pkg	\$27.29	\$25.93	\$25.93	\$24.56
7866500	#65	10/pkg	\$27.29	\$25.93	\$25.93	\$24.56
7866700	#67	10/pkg	\$27.29	\$25.93	\$25.93	\$24.56
7866900	#69	10/pkg	\$59.29	\$56.33	\$56.33	\$53.36



Tier Pricing Details see inside front cover

Regular Price	Member Price	Premier Price	Premier+ Price
---------------	--------------	---------------	----------------



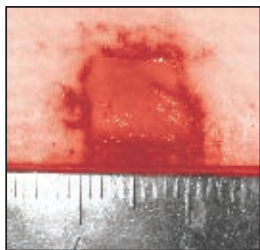
INSTRUMENTS AND KITS

ACE UNIGRAFT KNIFE CONNECTIVE TISSUE HARVESTER

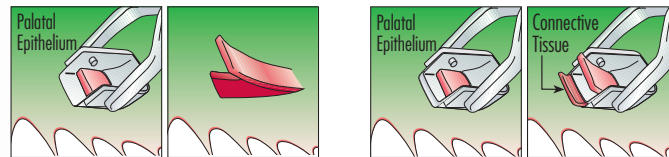
Allows for the harvesting of a predictable, uniform, keratinized epithelial graft from the palate to build and ensure adequate marginal or crestal gingiva.

Tips for Successful Use of the Connective Tissue Graft Harvester

- Follow all the instructions on the ACE Connective Tissue Graft Harvester Procedure Wall Chart (starting incision preparation, lubricant on the leading edge of the horseshoe, etc.).
A more conservative tunnel release without verticals may be performed for single or multiple teeth when the extent of the defect is not very significant.
Evaluate the palatal tissue thickness by bone sounding with a probe prior to using the harvester. The harvester works best with tissue of at least 3mm thickness.
If it is difficult to advance, move the harvester in a small medial lateral wiggle, in addition to the required posterior movement to assist with cutting. Do not use a dull blade (typical life of 3 uses).
Be sure to put a considerable amount of pressure in a superior direction to avoid making a superficial cut, which can damage the pedicle.



The harvested piece of connective tissue has a consistent 1.5mm thickness and a 9mm width. The length is controlled by the ACE CT Graft Harvester advance and is 10mm for this example.



Unigraft Knife™

The same handle is used for both the Single and Double shoe blades

Table with 4 columns: Product ID, Description, Unit, Price 1, Price 2, Price 3, Price 4. Row: 6500014 Handle only each \$244.49 \$232.27 \$232.27 \$220.04

Unigraft Knife™ Single Shoe Blade

Table with 4 columns: Product ID, Dimensions, Unit, Price 1, Price 2, Price 3, Price 4. Rows: 6500005 1.5mm x 6mm each \$67.79 \$64.40 \$64.40 \$61.01; 6500007 1.25mm x 9mm each \$67.79 \$64.40 \$64.40 \$61.01; 6500008 1.5mm x 9mm each \$67.79 \$64.40 \$64.40 \$61.01

Unigraft Knife™ Double Shoe Blade for Connective Tissue Harvesting

Table with 4 columns: Product ID, Dimensions, Unit, Price 1, Price 2, Price 3, Price 4. Row: 6500009 1.5mm x 9mm each \$90.29 \$85.78 \$85.78 \$81.26

* Replacement Single and Double Shoes are Interchangeable.

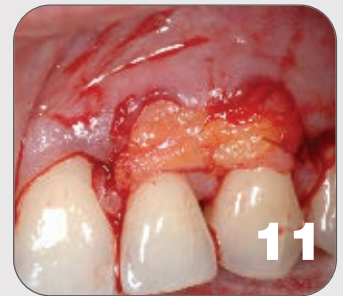
For Graft Site Closure Use Glustitch Periacryl® 90 Tissue Adhesive See Page 23



Patient presented with recession and minimal keratinized tissue on tooth 10 and 11.



Petroleum jelly (Vaseline) may be placed upon the leading edge of the horseshoe to assist in advancing the ACE Connective Tissue Graft.



Connective tissue sutured in place with 5-0 chromic gut suture.

CONNECTIVE TISSUE GRAFT HARVESTER PROCEDURE



2

Horizontal incisions made for access and flap release. NOTE: A more conservative tunneling preparation without horizontal or vertical release incisions may be seen in Saadoun, A. "Current Trends in Gingival Recession Coverage – Part 1: The Tunnel Connective Tissue Graft" Pract Proced Aesthet Dent 2006;18(7):433-438.



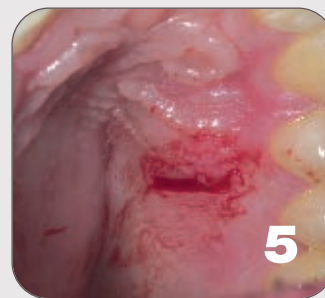
3

The root surface is prepared with a diamond bur (92250023) or curettes.



4

A small 9mm long V incision is prepared with a #15 blade.



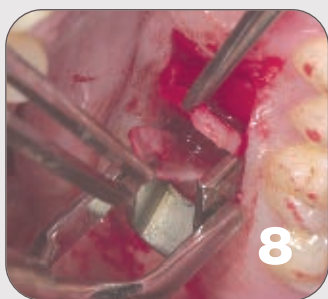
5

The prepared V will assist in starting the ACE Connective Tissue graft harvester.



7

The leading edge of the ACE Connective Tissue Graft Harvester blades are placed into the V and it is advanced toward the posterior. The distance advanced should be equal to the amount of tissue needed to treat the recession defect.



8

The pedicle epithelial containing layer can be seen as well as the connective tissue layer which is harvested with a #15 blade after harvester removal.



9

The epithelium containing pedicle flap is replaced.



10

PeriAcryl™ (PACRYL2V) is used to fixate the pedicle flap.



12

Flap coronally advanced to cover the connective tissue and sutured with 5-0 chromic gut suture.



13

Healing at 9 days.



14

1 month healing showing root coverage.



15

1 month palatal healing showing complete healing.

The procedures and techniques presented throughout this catalog are intended to provide basic reference only and should not be substituted for the complete surgical procedure being performed by a licensed

practitioner. A complete understanding and execution of the techniques and procedures presented within this catalog are the full responsibility of the licensed practitioner. These procedures and techniques are NOT TO

BE SUBSTITUTED for the practitioner's complete knowledge, education, experience or for any instrumentation or product instruction for use.



INSTRUMENTS AND KITS

TISSUE PUNCHES

Choose Between Reusable Punches (this page) and Sterile Disposable Punches (next page).



ACE REUSABLE TISSUE PUNCHES

- Provides a precise easy method of soft tissue removal to insure positive seating of healing abutments
- Diameter of instrument is designed to extend over the implant for simplified tissue removal
- Can be used for tissue biopsies
- Honed cutting edge
- Hand-held
- Surgical grade stainless steel

Long Handle Straight Tissue Punches

- 4" (10cm)

9000003	3.0mm	each	\$37.79	\$37.79	\$34.01	\$34.01
9000004	4.0mm	each	\$37.79	\$37.79	\$34.01	\$34.01
9000005	5.0mm	each	\$37.79	\$37.79	\$34.01	\$34.01

Long Handle Angled Tissue Punches

- 4" (10cm)

9000060	3.0mm	each	\$59.29	\$59.29	\$53.36	\$53.36
---------	-------	------	---------	---------	---------	---------

Short Handle Half-Cut Tissue Punches

- 1-1/4" (3cm)

20178501	3.5mm	each	\$43.79	\$43.79	\$39.41	\$39.41
20178502	4.0mm	each	\$43.79	\$43.79	\$39.41	\$39.41
20178503	5.0mm	each	\$43.79	\$43.79	\$39.41	\$39.41
20178504	6.0mm	each	\$43.79	\$43.79	\$39.41	\$39.41

ACE REUSABLE CONTRA ANGLE MUCOSA PUNCHES



- 1" (25mm)

9200002	2.0mm	each	\$74.99	\$74.99	\$67.49	\$67.49
9200003	3.0mm	each	\$74.99	\$74.99	\$67.49	\$67.49
9200001	3.5mm	each	\$74.99	\$74.99	\$67.49	\$67.49
9200004	4.0mm	each	\$74.99	\$74.99	\$67.49	\$67.49
9200005	5.0mm	each	\$74.99	\$74.99	\$67.49	\$67.49
9200006	6.0mm	each	\$74.99	\$74.99	\$67.49	\$67.49

Tissue Punch Driver

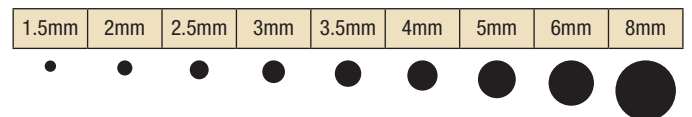
20155001	Thumb knob	each	\$37.29	\$37.29	\$31.70	\$31.70
20155411	Ratchet extension	each	\$51.99	\$51.99	\$44.19	\$44.19

Complete Set of Mucosa Tissue Punches

- Includes 6 Punches (above)
- Plus ratchet extension, thumb knob (see inset) and delrin tray

9200020	set of 6		\$564.99	\$564.99	\$508.49	\$508.49
---------	----------	--	----------	----------	----------	----------

TISSUE PUNCH SIZE CHART



INSTRUMENTS AND KITS

**PREMIER UNI-PUNCH®
DISPOSABLE BIOPSY PUNCHES**

- Sterile, seamless, razor sharp blades

9033509	1.5mm	25/box	\$51.79	\$51.79	\$46.61	\$46.61
9033502	2.0mm	25/box	\$51.79	\$51.79	\$46.61	\$46.61
9033511	2.5mm	25/box	\$51.79	\$51.79	\$46.61	\$46.61
9033503	3.0mm	25/box	\$51.79	\$51.79	\$46.61	\$46.61
9033510	3.5mm	25/box	\$51.79	\$51.79	\$46.61	\$46.61
9033504	4.0mm	25/box	\$51.79	\$51.79	\$46.61	\$46.61
9033505	5.0mm	25/box	\$51.79	\$51.79	\$46.61	\$46.61
9033506	6.0mm	25/box	\$51.79	\$51.79	\$46.61	\$46.61
9033508	8.0mm	25/box	\$51.79	\$51.79	\$46.61	\$46.61

Assortment

Includes: 5 each of 2.0mm, 3.0mm, 3.5mm, 4.0mm, & 5.0mm

9033525	25/box	\$51.79	\$51.79	\$46.61	\$46.61
---------	--------	---------	---------	---------	---------



INTEGRA™ STERILE DISPOSABLE BIOPSY PUNCHES

Feature a seamless stainless steel razor sharp cutting edge and a ribbed handle for maximum control and comfort. Each punch is sealed in a color-coded, peel-apart, see-through blister pack.

3331AA	1.0mm	50/box	\$146.29	\$146.29	\$131.66	\$131.66
3331A	1.5mm	50/box	\$97.29	\$97.29	\$87.56	\$87.56
3331	2.0mm	50/box	\$135.29	\$135.29	\$121.76	\$121.76
3332	3.0mm	50/box	\$105.49	\$105.49	\$94.94	\$94.94
3333	3.5mm	50/box	\$105.49	\$105.49	\$94.94	\$94.94
3334	4.0mm	50/box	\$135.29	\$135.29	\$121.76	\$121.76
3335	5.0mm	50/box	\$135.29	\$135.29	\$121.76	\$121.76
3336	6.0mm	50/box	\$135.29	\$135.29	\$121.76	\$121.76
3337	8.0mm	50/box	\$138.99	\$138.99	\$125.09	\$125.09

Assortment

Includes: 10 each of 2.0mm, 3.0mm, 4.0mm, 5.0mm, & 6.0mm

3338	50/box	\$135.29	\$135.29	\$121.76	\$121.76
------	--------	----------	----------	----------	----------



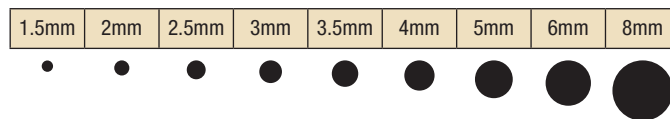
**INTEGRA™ SHORT HANDLED STERILE
DISPOSABLE BIOPSY PUNCHES**

Designed to enable dentists to take tissue samples in all areas of the mouth. Featuring the same razor-sharp blade as the original Integra biopsy punches, the shorter handle was modified to allow dental professionals access in even the hardest to reach, posterior areas of the mouth.

3333SH	3.5mm	50/box	\$122.49	\$122.49	\$110.24	\$110.24
3334SH	4.0mm	50/box	\$122.49	\$122.49	\$110.24	\$110.24
3335SH	5.0mm	50/box	\$122.49	\$122.49	\$110.24	\$110.24
3336SH	6.0mm	50/box	\$122.49	\$122.49	\$110.24	\$110.24



TISSUE PUNCH SIZE CHART

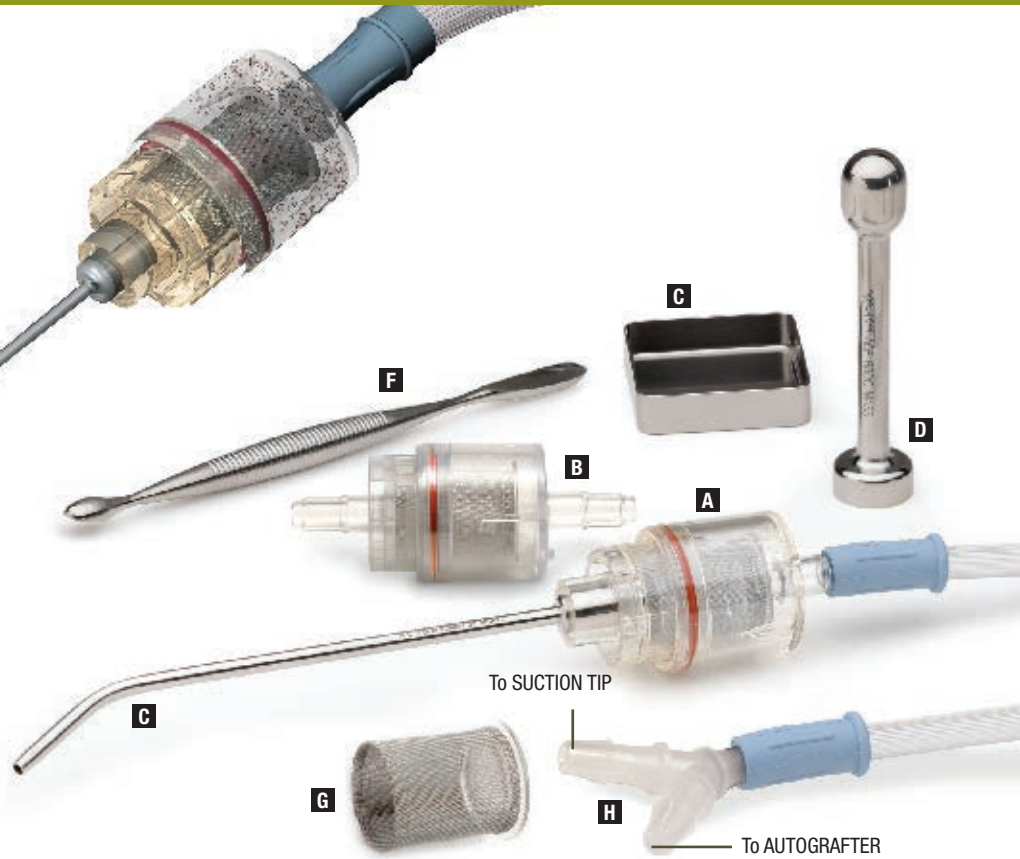
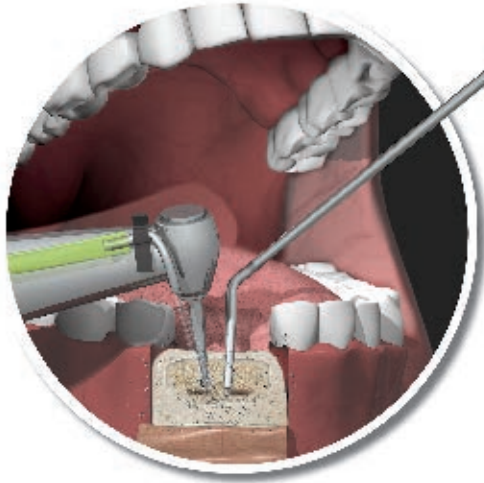


Uni-Punch® is a registered trademark of Premier® Medical Products.

Integra™ is a trademark of Integra LifeSciences Corporation.



BONE HARVESTING



ACE AUTOGRAFTER™

Simple method for obtaining autogenous bone

The patented design of the ACE Autografter allows the surgeon to filter and retain particles of bone which have been suctioned along with standard irrigation during surgery. The graft may be obtained from almost any bony site; examples include dental implant preparation sites, the mandible, maxilla, calvarium, etc. The collected graft material can be used either in a wet amorphous form, or a compressed osseous particulate. The drier particulate,

which is easier to handle, can be obtained by compressing the collected material in a screen with the titanium plunger. This forces out excess moisture through the screen.

NOTE: The ACE Autografter is not a routine suction device; therefore, bleeding should be controlled prior to use. The ilium should not be used as clots will clog this device.



Regular Bone



Autografted Bone Histology of Compressed Cortico/Cancellous Bone

ACE Autografter

0034215		Autografter Start Up Kit, (includes: A, C, D and G)	1 kit	\$470.79	\$470.79	\$423.71	\$423.71
0034212	A	ACE Autografter, for HVAC Tip, Autoclavable	each	\$229.79	\$229.79	\$206.81	\$206.81
0034210	B	ACE Autografter	each	\$200.29	\$200.29	\$180.26	\$180.26

ACE Autografter Accessories

0900024	C	HVAC Suction Tip, 4mm Tip, 45° Angle, 7" (18cm)	each	\$33.99	\$32.29	\$32.29	\$30.59
0034211	D	Titanium Plunger, 4-¼", 11cm	each	\$125.49	\$125.49	\$112.94	\$112.94
9600449	E	Square Titanium Bowl, 12mm Deep, 50 x 50mm	each	\$111.29	\$111.29	\$100.16	\$100.16
1000216	F	Implant Curette with Round Cups, Titanium, 5-½" (14cm) Cups are 5 x 10mm & 6 x 20mm	each	\$121.29	\$121.29	\$109.16	\$109.16
6462002	G	Screen Assembly, Disposable, Sterile, 12cc Capacity	10/box	\$141.79	\$134.70	\$134.70	\$127.61
0030276		Suction Connection Tubing, Sterile, 1' (3cm)	each	\$5.29	\$5.03	\$5.03	\$4.76
0034238		Suction Connection Tubing, Sterile, 3' (.9m)	20/case	\$63.79	\$60.60	\$60.60	\$57.41
0034239		Suction Connection Tubing, Sterile, 6' (1.8m)	20/case	\$86.49	\$82.17	\$82.17	\$77.84
Y2606	H	Y Connector, 7.5mm I.D., 11.5mm O.D.	each	\$6.29	\$5.98	\$5.98	\$5.66

Autografter™ is a trademark of ACE Surgical Supply.

BONE HARVESTING

**OSSEOUS TECHNOLOGIES
DISPOSABLE BONE COLLECTOR**

- Harvest valuable autogenous bone
- Correct small defects around implant sites and periodontal comprised teeth
- Shut off valve cuts off suction eliminating the chance of drying out bone
- Sterile collectors are sold in packs of 10
- Single patient use only
- Includes: 10 Collectors, each with 1 Filter, per Bag



BC100	bag	\$193.29	\$193.29	\$173.96	\$173.96
-------	-----	---------------------	---------------------	---------------------	---------------------

ACE REUSABLE BONE SCRAPERS

The tool for simple and fast recovery of allogenic bone grafts.

- Made of surgical-grade stainless steel, free of biocompatibility hazards
- Easy to clean and sterilize
- One re-usable cutting blade included, replacements are available
- Stainless Steel



Bone Scraper, Straight

39895700	Straight	each	\$290.99	\$290.99	\$261.89	\$261.89
39895701	Replacement blade	each	\$141.29	\$134.23	\$134.23	\$127.16

Bone Scraper, Angulated

39895900	Angulated	each	\$347.49	\$347.49	\$312.74	\$312.74
39895901	Replacement blade	each	\$141.29	\$134.23	\$134.23	\$127.16



ACE BONE CRUSHER

The Bone Crusher introduces an alternative to the Bone Mill. Insert the bone piece into the crusher and use the pestle in order to crush the bone. If necessary, you may additionally use a mallet.

- Stainless steel
- Crushing surface: 20mm

9600050	Bone Crusher	each	\$293.29	\$293.29	\$263.96	\$263.96
---------	--------------	------	---------------------	---------------------	---------------------	---------------------

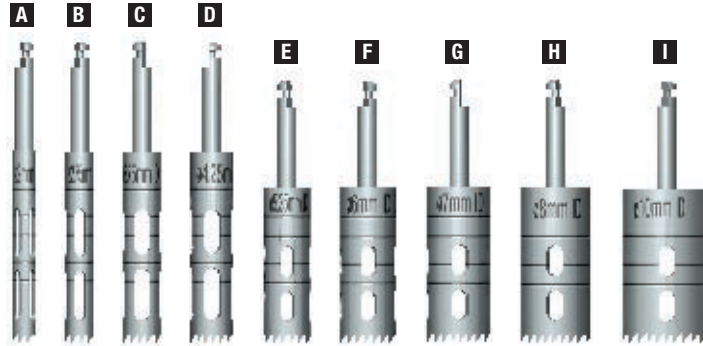




BONE HARVESTING

ACE TREPHINE BURS - CONTRA-ANGLE

- For harvesting bone in autogenous bone graft placement.
- May be used for retrieval of implants.
- Laser marked score lines.
- Manufactured from Titanium Alloy (Ti-6Al-4V ELI).
- Internally irrigated to minimize the risk of overheating the bone during drilling.
- Can be used with the Drill Guide Paralleling System to eliminate drill chatter during graft or implant harvesting.



		I.D. mm	O.D. mm	Length mm	Cutting Length	Markings					
04948001	A	2	2.8	35	18.5 mm	8,10,13,15,18 mm	each	\$90.29	\$85.78	\$85.78	\$81.26
04948002	B	2.75	3.5	35	18.5 mm	8,10,13,15,18 mm	each	\$90.29	\$85.78	\$85.78	\$81.26
04948201	C	3.75	4.6	35	18.5 mm	8,10,13,15,18 mm	each	\$90.29	\$85.78	\$85.78	\$81.26
04948202	D	4.25	5.10	35	18.5 mm	8,10,13,15,18 mm	each	\$90.29	\$85.78	\$85.78	\$81.26
04948401	E	5.25	6.10	32	15.5 mm	8,10,13,15 mm	each	\$90.29	\$90.29	\$81.26	\$81.26
04948501	F	6	6.9	32	15.7 mm	8,10,13,15 mm	each	\$90.29	\$85.78	\$85.78	\$81.26
04948502	G	7	7.9	32	15.8 mm	8,10,13,15 mm	each	\$90.29	\$85.78	\$85.78	\$81.26
04948701	H	8	8.9	32	14 mm	8,10,13 mm	each	\$90.29	\$85.78	\$85.78	\$81.26
04948702	I	10	10.8	32	14 mm	8,10,13 mm	each	\$90.29	\$85.78	\$85.78	\$81.26

SUGGESTED TREPHINES TO USE FOR RETRIEVE FAILED IMPLANTS For Implants up to.....

3.3 mm use 04948201

3.5-4.0 mm use 04948202

4.5-5.0 mm use 04948401

5.0-6.0 mm use 04948501

BONE HARVESTING

ACE TREPHINE BURS – HANDPIECE

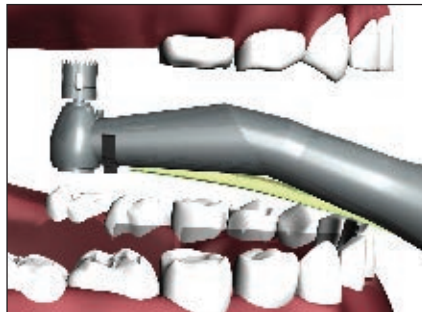
- For harvesting bone in autogenous bone graft placement.
- Laser marked score lines.
- Burs may be notched for the Stryker 100K Impaction Drill – Flat or Stepped – or J-Notched for an additional charge.
- Stryker notched burs may be used in straight Hall type handpieces.
- Manufactured from Titanium Alloy (Ti-6Al-4V EL).

		I.D. mm	O.D. mm	Length mm	Cutting Length	Markings					
04949201	J	3.75	4.6	52	18.5 mm	8,10,13,15,18 mm	each	\$90.29	\$85.78	\$85.78	\$81.26
04949202	K	4.25	5.1	52	18.5 mm	8,10,13,15,18 mm	each	\$90.29	\$85.78	\$85.78	\$81.26
04949501	L	6	6.9	49	15.7 mm	8,10,13,15 mm	each	\$90.29	\$90.29	\$81.26	\$81.26



ACE DR. SMILER'S TREPHINE BURS – POSTERIOR

- For harvesting autogenous bone in the posterior maxillary region.
- Cutting length is 6.75 mm, total length is 23 mm.
- Laser marked score line at 6 mm depth.
- Manufactured from Titanium Alloy (Ti-6Al-4V EL).



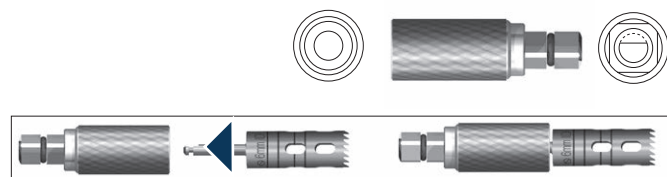
		I.D. mm	O.D. mm							
04948601	M	6	6.9		each	\$90.29	\$85.78	\$85.78	\$81.26	
04948602	N	7	7.9		each	\$90.29	\$85.78	\$85.78	\$81.26	



ACE LATCH TO SQUARE DRIVER CONVERTER

- Secures and locks contra shaft for hand or ratchet drive

20155411	14 mm long	each	\$51.99	\$51.99	\$44.19	\$44.19
----------	------------	------	---------	---------	---------	---------





**SUTURES
STAINLESS STEEL
NEEDLE TYPES**

Taper Point	
Taper Cut	
Blunt Point	
Conventional Cutting	
Precision Point	
Reverse Cutting	
Micro-Point Reverse Cutting	

NEEDLE COMPARISON CHART

A Selection of Popular Needles

Needle Description	ACE	Advance Plus	A. Titan	Ethicon	Hu-Friedy	Look	Myco Reli Pro	Riverpoint
Reverse Cutting								
3/8 Circle - 11mm				C-2		C16		
3/8 Circle - 12mm	DS12			C-2	C17	C17	YC-2	
3/8 Circle - 12mm				C-3				
3/8 Circle - 16.2mm	DS16			FS-3	C22	C22	YFS-3	FS-3
3/8 Circle - 19mm	DS18	C6	C-6	FS-2	C6	C6	YFS-2	FS-2
3/8 Circle - 24mm	DS24	C7	C-7	FS-1	C7	C7	YFS-1	
3/8 Circle - 26mm				FS		C8	YFS	
3/8 Circle - 30mm				FSL		C10		
1/2 Circle - 15mm	HS16			M-1	C43	C26		
1/2 Circle - 20mm				J-1		C20		
1/2 Circle - 24mm	HS24	C31	C-9	X-1	C9	C31	YX-1	
1/2 Circle - 26mm				CP-2		C21	YCP-2	
1/2 Circle - 37mm				CP-1		C13	YCP-1	
1/2 Circle - 40mm				CP		C14	YCP	
Precision Reverse Cutting								
3/8 Circle - 11mm	P1		C-1	P-1	C1	C1	YP-1	
3/8 Circle - 13mm	DSM13	C3	C-3	P-3	C3	C3	YP-3	P-3
3/8 Circle - 16mm				PS-3		PC34		
3/8 Circle - 19mm	DSM18		C-31	PS-2		PC31	YPS-2	PS-2
3/8 Circle - 24.3mm				PS-1		PC33		
1/2 Circle - 18mm				PS-4		PC30		
Conventional Cutting Needles								
3/8 Circle - 11mm				PC-1		CP1		
Taper Point								
3/8 Circle - 12mm				C-1		T12		
1/2 Circle - 13mm				TF		T22		TF
1/2 Circle - 18mm	HR17			RB-1		T28		
1/2 Circle - 22mm	HR22			SH-1		T4		
1/2 Circle - 26mm	HR26			SH		T		
1/2 Circle - 26.5mm				CT-2		T5		
1/2 Circle - 36mm				MH		T9		
1/2 Circle - 36.6mm				CT-1		T8		
1/2 Circle - 40mm				CT		T10		
Taper Cut								
3/8 Circle - 17mm				RB-1		T28		
1/2 Circle - 16mm	HRT17			V-5	D14	Y5		
1/2 Circle - 17mm				V-5		D14		



ACE PTFE SUTURES

- Undyed white monofilament
- Non-absorbable
- 12/Box

Size: 2-0			Comparable to ETHICON				
430124020	DS18	18"	FS2	\$125.49	\$119.22	\$119.22	\$112.94
Size: 3-0							
430124030	DS18	18"	FS2	\$125.49	\$119.22	\$119.22	\$112.94
430124031	DS16	18"	FS3	\$125.49	\$119.22	\$119.22	\$112.94
430124032	HS16	18"	M1	\$125.49	\$119.22	\$119.22	\$112.94
Size: 4-0							
430124040	DS16	18"	FS3	\$125.49	\$119.22	\$119.22	\$112.94
430124041	DS12	18"	C2	\$125.49	\$119.22	\$119.22	\$112.94
430124042	TF	18"	TF	\$134.29	\$127.58	\$127.58	\$120.86
430124043	DS18	18"	FS2	\$125.49	\$119.22	\$119.22	\$112.94
Size: 5-0							
430124050	C19	18"	C19	\$125.49	\$119.22	\$119.22	\$112.94
430124051	DS12	18"	C2	\$125.49	\$119.22	\$119.22	\$112.94
430124052	TF	18"	RB1	\$134.29	\$127.58	\$127.58	\$120.86
Size: 6-0							
430124062	DS12	18"	C2	\$125.49	\$119.22	\$119.22	\$112.94

SUTURES



ACE CHROMIC GUT

- Absorbable
- 12/box

Size: 3-0			Comparable to ETHICON	Comparable to LOOK				
0032484	DS18	18"	636G	-	\$31.99	\$30.39	\$30.39	\$28.79
0030043	DS18	27"	636G	560B	\$32.99	\$31.34	\$31.34	\$29.69
0032503	DS24	30"	-	-	\$44.79	\$42.55	\$42.55	\$40.31
0032505	HR26	30"	G122H	-	\$51.29	\$48.73	\$48.73	\$46.16
Size: 4-0								
0032485	DS18	18"	-	558B	\$32.99	\$31.34	\$31.34	\$29.69
0032482	DS18	27"	635G	-	\$32.99	\$31.34	\$31.34	\$29.69
0032494	DSM13	18"	1654G	595B	\$65.79	\$62.50	\$62.50	\$59.21
0032498	T4	14"	-	589B	\$33.99	\$32.29	\$32.29	\$30.59
Size: 5-0								
0032499	T28	14"	-	590B	\$8.79	\$8.35	\$8.35	\$7.91
0032502	DSM13	18"	-	1248B	\$65.79	\$62.50	\$62.50	\$59.21

ACE PLAIN GUT

- Absorbable
- 12/box

Size: 3-0			Comparable to ETHICON	Comparable to LOOK				
0032480	DS18	18"	H822G	592B	\$32.99	\$31.34	\$31.34	\$29.69
0032504	DS18	27"	-	-	\$31.99	\$30.39	\$30.39	\$28.79
0032481	HS24	18"	612G	594B	\$30.99	\$29.44	\$29.44	\$27.89
0032493	DS24	30"	H810H	-	\$28.99	\$27.54	\$27.54	\$26.09
Size: 4-0								
0032483	DS18	18"	7771	591B	\$32.99	\$31.34	\$31.34	\$29.69
0032506	DS18	27"	H821G	551B	\$30.99	\$29.44	\$29.44	\$27.89
Size: 5-0								
0032490	DSM13	18"	686G	596B	\$63.79	\$60.60	\$60.60	\$57.41

ACE PGA

- Equivalent to Vicryl®**
- Absorption is essentially complete within 50-90 days
- PGA Coated
- 12/box

Size: 4-0								
0034220	Undyed braided		DS18	27"	\$49.99	\$47.49	\$47.49	\$44.99
0034960	Undyed braided		DSM18	18"	\$87.49	\$83.12	\$83.12	\$78.74
0030494	Undyed braided		DSM13	18"	\$87.49	\$83.12	\$83.12	\$78.74
Size: 5-0								
0034930	Undyed braided		DSM13	18"	\$99.79	\$94.80	\$94.80	\$89.81
Size: 6-0								
0030492	Undyed braided		DSM13	18"	\$104.29	\$99.08	\$99.08	\$93.86

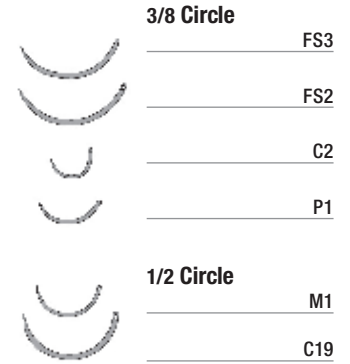
ACE PGA

- Equivalent to Vicryl®**
- Absorption is essentially complete within 50-90 days
- PGA Coated
- 12/box

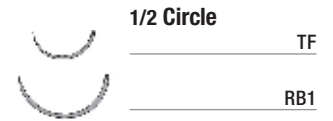
Size: 3-0								
0033930	Violet braided		DS18	18"	\$47.29	\$44.93	\$44.93	\$42.56
Size: 4-0								
0033920	Violet braided		DS18	18"	\$48.79	\$46.35	\$46.35	\$43.91
0034640	Violet braided		DSM13	18"	\$95.49	\$90.72	\$90.72	\$85.94
Size: 5-0								
0034630	Violet braided		DSM13	18"	\$99.79	\$94.80	\$94.80	\$89.81

** Vicryl® is a Registered Trademarks of Ethicon, Inc.

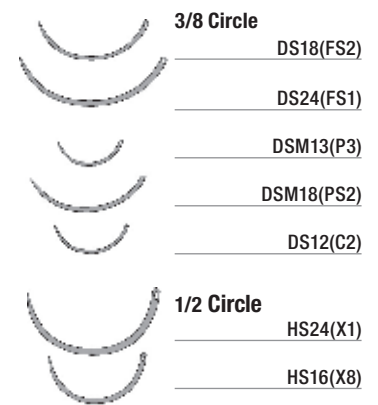
REVERSE CUTTING NEEDLES



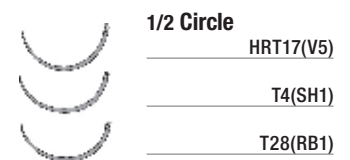
ROUND DIAMOND NEEDLES



REVERSE CUTTING NEEDLES



TAPER POINT NEEDLES





SUTURES



REVERSE CUTTING NEEDLES

- 3/8 Circle
- DS18(FS2)
- DS24(FS1)
- DSM13(P3)
- DSM18(PS2)
- DS12(C2)
- 1/2 Circle
- HS24(X1)
- HS16(X8)



TAPER POINT NEEDLES

- 1/2 Circle
- HRT17(V5) Polyester
- T4(SH1)
- T28(RB1)



ACE PGA-RAPID ABSORBING*

- Equivalent to Vicryl Rapide**
- Absorption is essentially complete within 49-63 days
- 12/box

Size: 3-0

0039907	Undyed braided	DSM18	18"	\$116.49	\$110.67	\$110.67	\$104.84
---------	----------------	-------	-----	----------	----------	----------	----------

Size: 4-0

0039906	Undyed braided	DSM18	18"	\$116.49	\$110.67	\$110.67	\$104.84
0039900	Undyed braided	HRT17	27"	\$118.99	\$113.04	\$113.04	\$107.09

Size: 5-0

0039904	Undyed braided	DSM13	18"	\$116.49	\$110.67	\$110.67	\$104.84
---------	----------------	-------	-----	----------	----------	----------	----------

* Maintains 50% tensile strength at 5 days; 0% at 14 days (data on file). | ** Vicryl® and Vicryl Rapide® are Registered Trademarks of Ethicon, Inc.

ACE SILK

- Black braided, non-absorbable
- 12/box

Size: 3-0

				Comparable to ETHICON	Comparable to LOOK				
0032487	DS18	18"		2772	784B	\$27.29	\$25.93	\$25.93	\$24.56
0032491	DS24	18"		684G	786B	\$26.29	\$24.98	\$24.98	\$23.66
0032488	HS24	18"		632G	785B	\$24.79	\$23.55	\$23.55	\$22.31
0032486	HS16	18"		7762	-	\$30.99	\$29.44	\$29.44	\$27.89

Size: 4-0

0032489	DS18	18"		683G	-	\$27.29	\$25.93	\$25.93	\$24.56
0032492	DSM13	18"		641G	-	\$63.79	\$60.60	\$60.60	\$57.41

Size: 5-0

0032479	DSM13	18"		-	-	\$84.49	\$80.27	\$80.27	\$76.04
---------	-------	-----	--	---	---	---------	---------	---------	---------

ACE NYLON

- Black monofilament, non-absorbable
- 12/box

Size: 5-0

				Comparable to ETHICON	Comparable to LOOK				
0032460	DS12	10"		-	913B	\$37.79	\$35.90	\$35.90	\$34.01

Size: 6-0

0032461	DS12	10"		-	911B	\$37.79	\$35.90	\$35.90	\$34.01
---------	------	-----	--	---	------	---------	---------	---------	---------

ACE POLYPROPYLENE

- Blue monofilament, non-absorbable
- 12/box

Size: 5-0

				Comparable to ETHICON	Comparable to LOOK				
0032501	DSM13	18"		8698G	-	\$81.29	\$77.23	\$77.23	\$73.16

ACE POLYESTER

- Green braided, non-absorbable
- 12/box

Size: 5-0

				Comparable to ETHICON	Comparable to LOOK				
0032500	HRT17	18"		7773	797B	\$53.79	\$51.10	\$51.10	\$48.41

SUTURES

ADVANCE+ PLUS

ADVANCE PLUS CHROMIC GUT

- Absorbable
- 12/box

Size: 2-0			Comparable to LOOK				
ADV561B	C-7	27"	561B	\$23.79	\$22.60	\$22.60	\$21.41
Size: 3-0							
ADV525B	C-6	18"	525B	\$23.79	\$22.60	\$22.60	\$21.41
ADV560B	C-6	27"	560B	\$23.79	\$22.60	\$22.60	\$21.41
Size: 4-0							
ADV595B	C-3	18"	595B	\$55.79	\$53.00	\$53.00	\$50.21
ADV558B	C-6	18"	558B	\$23.79	\$22.60	\$22.60	\$21.41
ADV559B	C-6	27"	559B	\$23.79	\$22.60	\$22.60	\$21.41
ADV589B	T-4	14"	589B	\$30.49	\$28.97	\$28.97	\$27.44
Size: 5-0							
ADV1248B	C-3	18"	1248B	\$55.79	\$53.00	\$53.00	\$50.21

ADVANCE PLUS PLAIN GUT

- Absorbable
- 12/box

Size: 3-0			Comparable to LOOK				
ADV592B	C-6	18"	592B	\$23.79	\$22.60	\$22.60	\$21.41
ADV554B	C-6	27"	554B	\$23.79	\$22.60	\$22.60	\$21.41
ADV553B	C-7	27"	553B	\$23.79	\$22.60	\$22.60	\$21.41
ADV594B	C-31	18"	594B	\$23.79	\$22.60	\$22.60	\$21.41
Size: 4-0							
ADV591B	C-6	18"	591B	\$23.79	\$22.60	\$22.60	\$21.41
ADV551B	C-6	27"	551B	\$23.79	\$22.60	\$22.60	\$21.41

ADVANCE PLUS SILK

- Black braided, non-absorbable
- 12/box

Size: 3-0			Comparable to LOOK				
ADV784B	C-6	18"	784B	\$22.29	\$21.18	\$21.18	\$20.06
Size: 4-0							
ADV781B	C-6	18"	781B	\$23.29	\$22.13	\$22.13	\$20.96

ADVANCE PLUS POLYGLYCOLIC ACID

- Undyed braided, absorbable
- 12/box

Size: 4-0			Comparable to LOOK				
ADV422B	C-6	27"	422B	\$50.49	\$47.97	\$47.97	\$45.44

REVERSE CUTTING NEEDLES

3/8 Circle

C6

C7

1/2 Circle

C31



REVERSE REVERSE CUTTING NEEDLES

3/8 Circle

C3



TAPER POINT NEEDLES

1/2 Circle

T-4





INDEX

ASAP Alliance Program Details	1	Glustitch PeriAcryl Tissue Adhesive	23	Spatula Osteotomes	50
alloOss® Allograft	2-5	Graft Delivery Syringes	32	Stripper, Anterior Border	35
alloOss® Plus	8	Grafting Instruments	34-35	Surgical Blade Handles	51
alloguide® gf Placental Membrane	16	Mallets	47, 50	Surgical Blades	51
Antralplasty Elevator Kit	37	Measuring Instruments	30-31	Sutures	60-63
Autogenous Bone Collector	56-57	Membrane Fixation System	26	SynOss Synthetic Bone Graft	15
AutoGrafter Autogenous Bone Collector	56	MemGuide Porcine Dental Membrane	18	Syringes, Graft Delivery	32
Barrier Membranes	16-21	Mesh	24-25	Tefguard® PTFE Membranes	20-21
Blade and Handles	51	Mineralized Allograft	2-4	Tenting Screws	27
Block Graft	5	Misch Ramus Graft Instrument Kit	50	Tissue Adhesive, Glustitch PeriAcryl	23
Bone Chisels	46-47, 73	Misch Symphysis Graft Instrument Kit	50	Tissue Harvester	52
Bone Collector, Autogenous	56-57	NuOss® Xenograft	10-13	Tissue Punches	54-55
Bone Expanders	44-47	Offset Sinus Lift Osteotomes	42	Titanium Foil	25
Bone Fixation System	26-27	Osseo-Plates	25	Titanium Micro Mesh	24-25
Bone Harvesting Instruments	56-59	Osteoecel Plus	9	Titanium Reinforced PTFE Membranes	21
Bone Holding Forceps	35, 35	Periodontal Ligament Luxating Elevator Kit	48	Trephine Burs	50, 58-59
Bone Crusher	57	Periotome Handle & Blades Kit	49	TruFIX Fixation System	26
Bone Scrapers	57	PGA Sutures	61-62	TruSCREWS Bone Screws	27
Bone Screws, Self Drilling	27	Probes, Depth	31	TruTACK and TruSCREW	27
Bone Spreader Osteotome	49	PTFE Membranes	20-21	TruTACKS Bone Tacks	27
Bone Tacks	27	PTFE Sutures	60	Unigraft Knife, Tissue Harvester	52
Bone Trap	56-57	RCM6® Resorbable Collagen Membrane	19	VICRYL™ Knitted Mesh	21
Burs, Trephines	50, 58-59	Resorbable Collagen Foam	22	Wire Cutters	33
Calipers	30-31	Resorbable Collagen Plug	22	Wire Modeling Pliers	33
CaSO4 Calcium Sulfate	14	Resorbable Collagen Tape	22		
conFORM Resorbable Membrane	17	Resorbable Membrane	14 - 17		
Connective Tissue Harvester	52	Retractors	50		
Contra-Angle Handpieces	58-59	Retractors, Chin Exposure	35		
Curettes	34, 36-37	Ridge Expanding Chisels	46		
Cutting, Forceps	33	Ridge Expanding Screws	44		
Cutting, Wire	33	Rongeur, Kerrison	35		
Elevators	36, 37	Sinus Lift Elevator Kit	37		
Foil, Titanium	25	Sinus Lift Kit	36		
Forceps	34-35	Sinus Lift Osteotomes	40-42		
Gauges	31	Site Dilator Kit	41		

TUTORIALS	
Tutorial: Block Graft	6-7
Tutorial: Connective Tissue Harvesting	53
Tutorial: Grafting with Titanium Mesh	28-29
Tutorial: Lateral Sinus Augmentation	52
Tutorial: Ridge Expanding Chisels	46
Tutorial: Ridge Expanding Screws	45
Tutorial: Sinus Lift Osteotomes	43
Tutorial: TruFIX Fixation	7, 28-29

I'm ready to buy.

Which Price Tier Column Do I Use?

01107001	alloOss	0.5cc	\$101.79	\$101.79	\$81.43	\$81.43
01107002	alloOss	1.0cc	\$132.79	\$132.79	\$106.23	\$106.23
01107003	alloOss	2.0cc	\$212.99	\$212.99	\$170.39	\$170.39



SEE INSIDE COVER FOR ASAP ALLIANCE PROGRAM DETAILS

Regular Price	Member Price	Premier Price	Premier+ Price
Most customers fall into this category. It's not "suggested retail", but reflects the strong buying power of ACE SOUTHERN, which we pass along to you as everyday low prices.	In partnership with the AAOMS and AAP societies, their members are given a special 5% discount on general merchandise, including Rx, supplies and equipment.	Enrolled members who have met the required annual spend of \$15,000 are qualified to receive the Premier Discount.	As a special reward for our enrolled society members, once they have met the required annual spend of \$25,000 they will receive the Premier+ Discount.

TERMS AND CONDITIONS

TERMS

- **All invoices are net 30 days.**
- ACE SOUTHERN reserves the right to assess a late charge of \$25.00 on accounts past due.
- For inquiries on your account, please call our **Accounting Department** toll free at **1-800-455-8500** 8am - 7pm EST or contact them by email: **info@acesouthern.com**.
- Due to manufacturer policies, prices, discounts and/or product information are subject to change without notice.
- Items on long term backorder due to manufacturer supply are subject to cancellation.

PAYMENT

We accept checks, Visa, MasterCard, Discover, and American Express for payment.

STATEMENTS

Statements are mailed monthly. Please contact our Accounting Department Toll Free at **1-800-455-8500** 8am - 6pm EST or by email: **info@acesouthern.com**, if you have any questions regarding monthly statements.

CONTROLLED SUBSTANCES ORDERING

- **The Drug Enforcement Administration requires a copy of your current Federal DEA registration certificate to be on file prior to shipping controlled substances.**
- **Federal Law requires a properly completed DEA Form 222 for all Class II Pharmaceuticals.** Shipment of Class II Pharmaceuticals cannot be made until this form has been received. Improperly completed forms, or forms with alterations, will be returned. In lieu of using the DEA Form 222, orders may also be placed using our electronic 222 process.
- Regulations require us to limit the sale of Rx and controlled substances only to registered, licensed healthcare professionals. If you are a new customer or have recently moved, please furnish us with a copy of your updated state and federal registrations verifying your shipping address. Please note that all orders for controlled substances are subject to a due diligence review process. Schedule II controlled substances can be ordered electronically or by mail. For more information on our Controlled Substance Ordering System please visit <https://www.acesouthern.com/e222>; if you prefer to continue using Federal 222 Forms to order Schedule II controlled substances, mail the form to:

ACE SOUTHERN
One Southern Court
West Columbia, SC 29169

- ACE SOUTHERN restricts the sale or other transfer of medications to prisons/correctional facilities for use in lethal injections, based on our manufacturer agreements. The goods ACE SOUTHERN sells are intended to be used for their label-approved purposes or applicable standards of care, which do not include human lethal injection.

WARRANTIES

ACE SOUTHERN will pass through to the customer, at the time of sale, any transferable product warranties, indemnities and remedies provided to ACE SOUTHERN by the applicable manufacturer. EXCEPT AS OTHERWISE PROVIDED HEREIN, TO THE EXTENT PERMITTED BY LAW,

ACE SOUTHERN PROVIDES NO WARRANTIES OF ANY KIND, EXPRESS OR IMPLIED, INCLUDING WITHOUT LIMITATION ANY WARRANTY OF MERCHANTABILITY, FITNESS FOR PARTICULAR PURPOSE OR NON-INFRINGEMENT, AND THE CUSTOMER SHALL LOOK TO THE MANUFACTURER OF THE PRODUCT FOR ANY WARRANTY THEREON.

LIMITATION OF LIABILITY

THE CUSTOMER AGREES TO LOOK SOLELY TO THE MANUFACTURER OF THE PRODUCT FOR ANY CLAIM ARISING DUE TO LOSS, INJURY, DAMAGE OR DEATH RELATED TO THE USE OR SALE OF PRODUCTS. ACE SOUTHERN SHALL NOT BE LIABLE FOR INDIRECT, INCIDENTAL, PUNITIVE, SPECIAL OR CONSEQUENTIAL DAMAGES INCLUDING, BUT NOT LIMITED TO, LOST PROFITS AND LOSS OF GOODWILL, ARISING FROM OR RELATING TO ANY BREACH TO THIS AGREEMENT (OR ANY DUTY OF COMMON LAW, AND WHETHER OR NOT OCCASIONED BY THE NEGLIGENCE OF ACE SOUTHERN OR ITS AFFILIATES), REGARDLESS OF ANY NOTICE OF THE POSSIBILITY OF SUCH DAMAGES.

SHIPPING

Order by 2:30pm EST and all in stock items will ship the same day (excluding weekends and federal holidays). **All orders are subject to shipping charges which may include:**

- Minimum order fee
- Hazardous material and refrigerated product fees
- Excessive weight fee
- Express shipping charge
- Order handling fee

RETURN POLICY

If you are not satisfied with your purchase, contact our Customer Service department within 30 days of purchase at 800-624-5926. All returned products require a return merchandise authorization, RMA. Returns will not be accepted without this number.

- **Products must be in saleable condition.** Product that has been opened, used, written on or otherwise tampered with is not considered to be in saleable condition.
- Returns are subject to a restocking fee.

Please Note the Following Items are Non-Returnable:

- Refrigerated and hazardous items
- Equipment
- Narcotics and controlled substances
- Non-stock and drop-ship items
- Sterile solutions for injection and irrigation
- Products that are noted "non-returnable"

BACKORDERS

- Backorders older than six (6) months will be canceled automatically.
- For questions regarding expired backorders, please contact Customer Service at **800.624.5926**.

DAMAGES/SHORTAGES

- Claims for missing or damaged items must be reported within 48 hours of receipt.
- Retain all packing material, boxes, and packing slips.
- Before reporting missing items, please examine the packing material. Occasionally product is lodged in the foam.

ARBITRATION

All Claims related to or arising under or relating to this Agreement are to be exclusively and finally determined by binding arbitration in the state of New York, or another location mutually agreeable to the parties. Any and all Claims must be arbitrated on an individual basis, and there shall be no right or authority for any Claims or disputes to be arbitrated on a class action or collective basis. For avoidance of doubt, each party irrevocably waives any right to: (i) have any Claim resolved in connection with any class action or collective action, or (ii) recover any damages or relief directly or indirectly as part of any class action or collective action. The arbitration shall be conducted on a confidential basis pursuant to the Commercial Arbitration Rules of the American Arbitration Association, or if applicable, under its Procedures for Large, Complex Commercial Disputes. Any decision or award as a result of any such arbitration proceeding shall be in writing and shall provide an explanation for all conclusions of law and fact and shall include the assessment of costs, expenses and reasonable attorneys' fees. Any such arbitration shall be conducted by an arbitrator experienced in the disputed subject matter and shall include a written record of the arbitration hearing. The parties reserve the right to object to any individual who shall be or has been at any time employed by or affiliated with a competing organization or entity. An award of arbitration may be confirmed in a court of competent jurisdiction. To the extent that any Claim or dispute is determined to not be subject to arbitration, all other Claims or disputes that would otherwise be subject to arbitration must be arbitrated. As used in this Agreement, "Claims" shall mean any and all liabilities, disputes and expenses whatsoever including, without limitation, claims, adversary proceedings (whether before a court, administrative agency or any other tribunal), damages (whether compensatory, multiple, exemplary or punitive), judgments, awards, penalties, settlements, investigations, costs, responses to subpoenas or other governmental directives and reasonable attorneys' fees and disbursements with respect to any claims that may be sustained, suffered or incurred by a Party hereto.

DISCOUNTS, REBATES, AND DISCLOSURES

Invoice or statement prices may reflect or be subjected to a bundled discount or rebate pursuant to purchase offer, promotion or discount program. You must fully and accurately report to Medicare, Medicaid, Tricare and/or any other federal or State program, upon request by such program, the discounted price(s) or net price(s) for each invoiced item, after giving effect to any applicable discounts or rebates, which price(s) may differ from the extended prices set forth on your invoice. Accordingly, you should retain your invoice and all relevant information for your records. It is your responsibility to review any agreements or other documents, including offers or promotions, applicable to the invoiced products/prices to determine if your purchase(s) are subject to a bundled discount or rebate. Any such discounts must be calculated pursuant to the terms of the applicable purchase offer, promotion or discount program. Participation in a promotional discount program is only permissible in accordance with discount program rules. By participation in such program, you agree that, to your knowledge, your practice complies with the discount program requirements.

Copyright 2023 ACE SOUTHERN Surgical Solutions

