

YOUR GENERATION OF BONE REGENERATION

Natural Anorganic Bovine Bone Matrix.



- Physically and chemically comparable to the mineral matrix of human bone
- One of the most widely used bone substitutes by dental professionals¹
- Available in a variety of formulations

¹ Reference on back

NuOss GRANULES

NuOss natural cancellous and cortical bone matrix is produced by the removal of all organic components from bovine bone. Due to its natural porous structure, NuOss is physically and chemically comparable to the mineralized matrix of human bone.

The proprietary manufacturing process of NuOss allows for maintenance of the naturally occurring bone mineral structure, including macroscopic and microscopic structures. Due to this trabecular architecture with interconnecting macro and micro pores, the ingrowth of new bone and associated vascularization at the grafting site is optimized.

NuOss may be used with autogenous bone where there is an insufficient quantity of bone to fulfill the needs of the proposed surgical procedure.

NuOss Granules are recommended for:

- Augmentation or reconstructive treatment of the alveolar ridge
- Filling of infrabony periodontal defects
- Filling of defects after root resection, apicoectomy, and cystectomy
- Filling of extraction sockets to enhance preservation of the alveolar ridge
- Elevation of the maxillary sinus floor
- Filling of periodontal defects in conjunction with products intended for Guided Tissue Regeneration (GTR) and Guided Bone Regeneration (GBR)
- Filling of peri-implant defects in conjunction with products intended for Guided Bone Regeneration (GBR)



NuOss

cancellous and cortical granules

NuOss Granules Features:

Handling: The structure of NuOss aids in particle hydration and delivery of the product to the defect.

Particle Distribution: NuOss maximizes the distribution of the preferred particle sizing within desired ranges.

Particle Structure and Porosity: NuOss maintains the high porosity and trabecular structure of natural mineralized bone and maximizes the potential for angiogenesis.²



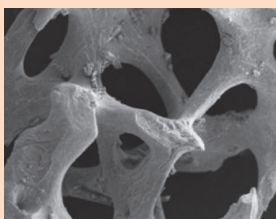
delivery syringe

NuOss DS Features:

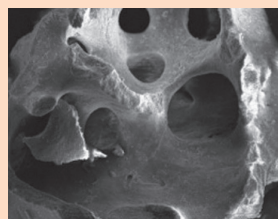
Granules: NuOss DS features our best-selling small particle NuOss cancellous granules.

Delivery Syringe: The preloaded NuOss Delivery Syringe makes it easier to hydrate and place the graft material, minimizing preparation time and particulate migration at the surgical site.

50x Magnification



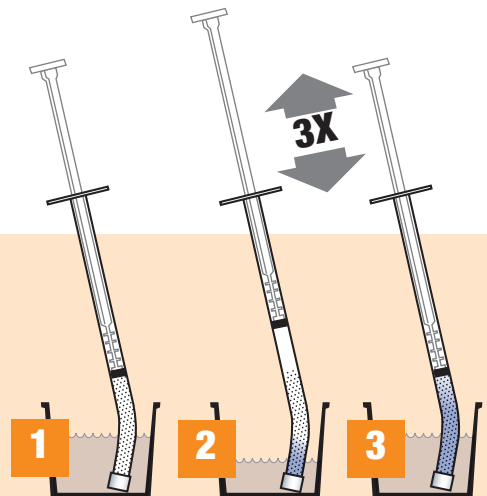
NuOss



Bio-Oss®

Hydration Instructions

After hydration, remove cap for delivery of the product to the defect.



NuOss COLLAGEN

Just like NuOss granules, naturally structured NuOss Collagen combines the mineral properties of cancellous particulate with the space maintenance of collagen. This highly manageable combination provides a convenient approach to filling periodontal and maxillofacial defects. With NuOss Collagen products, there is no mixing or loose handling.

NuOss Collagen is recommended for:

- Elevation of the maxillary sinus floor
- Filling of infrabony periodontal defects
- Augmentation or reconstructive treatment of the alveolar ridge
- Filling of defects after root resection, apicoectomy, and cystectomy
- Filling of extraction sockets to enhance preservation of the alveolar ridge
- Filling of periodontal defects in conjunction with products intended for Guided Tissue Regeneration (GTR) and Guided Bone Regeneration (GBR)
- Filling of peri-implant defects in conjunction with products intended for Guided Bone Regeneration (GBR)



NuOss®
collagen block

NuOss Collagen Block Features:

NuOss Collagen: Available in 3 sizes, NuOss Collagen can be easily trimmed to shape the defect. Hydration can be done prior to insertion or once it has been placed.



anorganic bovine bone
with collagen

NuOss Plug Features:

NuOss Plug: Designed to aid in filling extraction sites to enhance preservation of the alveolar ridge. NuOss Plug is easy to place and prevents particulate migration once placed into the surgical site.



socket and sinus
expanding composite

NuOss XC Features:

Expansion: Expanding composite material allows for placement in a compressed form. Upon hydration/contact with blood, the material will self-expand to fill the entire defect.

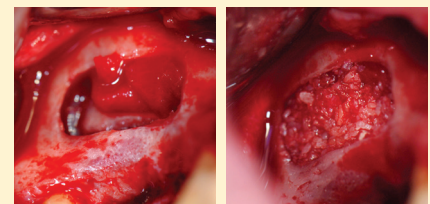
NuOss XC Socket: Preshaped and ready to place directly into the extraction cavity.

NuOss XC Sinus: Upon successful elevation of the sinus membrane, NuOss XC Sinus is placed without pre-hydration, into the sinus cavity.

NuOss XC Socket



NuOss XC Sinus



NuOss XC surgical photography shown provided by Dr. Frank Kung - Austin, TX

NuOss® Cancellous Particulate				Regular	Member	Premier	Premier+
5099001	0.25-1.0mm	0.25g	0.6cc	\$96.99	\$96.99	\$77.59	\$77.59
5099002	0.25-1.0mm	0.5g	1.2cc	\$155.79	\$155.79	\$124.63	\$124.63
5099003	0.25-1.0mm	1.0g	2.4cc	\$260.49	\$260.49	\$208.39	\$208.39
5099004	0.25-1.0mm	2.0g	4.7cc	\$451.49	\$451.49	\$361.19	\$361.19
5099102	1.0-2.0mm	0.5g	1.7cc	\$155.79	\$155.79	\$124.63	\$124.63
5099104	1.0-2.0mm	2.0g	6.8cc	\$451.49	\$451.49	\$361.19	\$361.19

NuOss Cortical Particulate				Regular	Member	Premier	Premier+
5091001	0.50-1.0mm	0.25g	0.4cc	\$96.99	\$96.99	\$77.59	\$77.59
5091002	0.50-1.0mm	0.5g	0.8cc	\$155.79	\$155.79	\$124.63	\$124.63
5091003	0.50-1.0mm	1.0g	1.6cc	\$260.49	\$260.49	\$208.39	\$208.39
5091004	0.50-1.0mm	2.0g	3.2cc	\$451.49	\$451.49	\$361.19	\$361.19

NuOss Cancellous Particulate in a Delivery Syringe				Regular	Member	Premier	Premier+
5099025	0.25-1.0mm		0.25cc	\$76.79	\$76.79	\$61.43	\$61.43
5099050	0.25-1.0mm		0.50cc	\$110.29	\$110.29	\$88.23	\$88.23

NuOss Collagen Block				Regular	Member	Premier	Premier+
5099100	6 x 7 x 8mm		100mg	\$110.29	\$110.29	\$88.23	\$88.23
5099250	8 x 9 x 9mm		250mg	\$205.79	\$205.79	\$164.63	\$164.63
5099500	10 x 11 x 12mm		500mg	\$342.79	\$342.79	\$274.23	\$274.23

NuOss Plug				Regular	Member	Premier	Premier+
5094001	9 x 15mm	Tapered	5/box	\$308.99	\$308.99	\$247.19	\$247.19
5094002	10 x 20mm	Straight	5/box	\$308.99	\$308.99	\$247.19	\$247.19

NuOss XC Socket				Regular	Member	Premier	Premier+
5092001	6 x 15mm	expanded	each	\$103.99	\$103.99	\$83.19	\$83.19
5092002	9 x 15mm	expanded	each	\$165.49	\$165.49	\$132.39	\$132.39

NuOss XC Sinus				Regular	Member	Premier	Premier+
5093001	17 x 10mm	expanded	each	\$165.49	\$165.49	\$132.39	\$132.39
5093002	22 x 12mm	expanded	each	\$267.29	\$267.29	\$213.83	\$213.83



Copyright © 2024 ACE SOUTHERN
NuOss® is a registered trademark of ACE Surgical.

NuOss is manufactured for ACE Surgical.

BioOss® is a registered trademark of ED. GEISTLICH SOHNE AG.

All prices are subject to change without notice. Prices shown are domestic prices in U.S. dollars; does not include shipping or any duties. For discount details visit acesouthern.com/ASAP. And for the most up-to-date pricing, please contact ACE SOUTHERN or visit our website.

Footnote References:

- 2019 U.S. Market Report Suite for Dental Bone Graft Substitutes and Other Biomaterials; iDATA_USDBGS19_MS (pages 37, 130-131, 133, 152 and 158).
- Klenke FM, Liu Y, Yuan H, Hunziker EB, Siebenrock KA, Hofstetter W. Impact of pore size on the vascularization and osseointegration of ceramic bone substitutes in vivo. J Biomed Mater Res A. 2008 Jun 1;85(3):777-86.