



## REGENERATIVE & BONE GRAFTING

# PRODUCTS CATALOG



 [info@acesouthern.com](mailto:info@acesouthern.com)

 [acesouthern.com](http://acesouthern.com)



**REGEN24**






# BE THE OFFICE HERO

Sign up for **REPLENISH** today!



## The Replenish Program, easy as 1-2-3

Our **REPLENISH** program allows you to set up scheduled deliveries for the products your practice uses on a regular basis. Ensure that your practice never runs out of essential items that keep your office running smoothly.

- 1 **SHOP** from hundreds of eligible **Replenish** products marked in this catalog with this symbol 
- 2 **CHOOSE** your delivery frequency; every week, every month, **you're in control**
- 3 **SAVE** an additional 3% on all **Replenish**-eligible products

For more details, scan the  
qr-code or visit us at...  
[acesouthern.com/lp/replenish](https://acesouthern.com/lp/replenish)





REGENERATIVE AND BONE GRAFTING PRODUCTS



TABLE OF CONTENTS

<b>ALLOGRAFTS</b>	<b>4</b>
<b>XENOGRAFTS</b>	<b>12</b>
<b>SYNTHETICS</b>	<b>16</b>
<b>MEMBRANES</b>	<b>18</b>
<b>WOUND HEALING</b>	<b>26</b>
<b>FIXATION</b>	<b>28</b>
<b>INSTRUMENTS AND KITS</b>	<b>34</b>
<b>BONE HARVESTING</b>	<b>51</b>
<b>SUTURES</b>	<b>54</b>
<b>INDEX</b>	<b>56</b>
<b>TERMS AND CONDITIONS</b>	<b>57</b>

## “WHERE’S THE PRICING?”

We want to ensure you have the most current pricing available, but understand sending multiple catalogs a year in order to achieve that has a negative impact on the environment. Therefore, in order to create less waste, we have eliminated pricing from this catalog. Following the link below, or scanning the QR code, will allow you to view current retail pricing. In order to view pricing specific to your account, you must log in to your account on our website. This will also provide real-time product availability information. Plus, ordering is now just a click away!

Simply select the page number or sku in the index and begin!

Visit [acesouthern.com/catalog/regen24](https://acesouthern.com/catalog/regen24) today



**SOCIETY MEMBERS SAVE 5% ON  
RX, SUPPLIES AND EQUIPMENT**







## REGENERATIVE AND BONE GRAFTING PRODUCTS

# TRUST – CONVEN



ACE SOUTHERN

**YOUR PREFERRED  
DENTAL SURGICAL  
SOLUTION.**



**ACE SOUTHERN's retail sales operation has integrated with Henry Schein's North America Distribution Group to create a unified sales team, specifically focused on the needs of dental surgical specialists.**

### TRUSTED SOURCE FOR BONE REGENERATION PRODUCTS

ACE Surgical is one of the only dental companies to receive accreditation from the AATB® (American Association of Tissue Banks). This means ACE Surgical operates under the stringent guidelines set forth by the AATB to process and provide safe quality human tissue for ACE SOUTHERN's flagship alloOss® product portfolio.

Additionally, ACE SOUTHERN offers a complete portfolio of regenerative products including NuOss® xenograft, an array of resorbable membranes, and bone viable matrix products with growth factors.

### ACESOUTHERN.COM

The online store at ACESOUTHERN.com is more than just easy online ordering. You can manage your account, set up scheduled deliveries with our Replenish Program, and receive exclusive online offers.

- [Order anytime, 24/7/365](#)
- [Save favorites for reordering](#)
- [Order from history](#)
- [View order history](#)
- [Check shipping status](#)
- [Pay invoices](#)



For more information on  
**ACE SOUTHERN,**  
please scan the QR code




## REGENERATIVE AND BONE GRAFTING PRODUCTS

## IENCE – VALUE

**REPLENISH PROGRAM**

Imagine your office running smoothly, never running out of the essentials used the most. This can be a reality with our Replenish Program. Set up scheduled deliveries for the products your practice uses the most and sit back, save, and be the hero of your office.

You can shop from hundreds of eligible products. Just look for this symbol  on ACESOUTHERN.com. Once enrolled, you are in complete control - easily manage your Replenish items, change quantities, change frequency, and add or update products. And don't forget, Replenish eligible products receive an additional savings!

**PRODUCT EXPERTS**

Our legacy is founded by an oral surgeon and a pharmacist who put patients and practices first. ACE SOUTHERN has invested in industry expertise in regenerative medicine and pharmaceutical compliance. Our team is focused on making sure that we offer the best products at competitive prices. You will enjoy knowledgeable customer service associates and access to dedicated inside and outside sales representatives to provide support with a call, click or text.

**ASSOCIATION SUPPORT**

AAOMS and AAP members who purchase from ACE SOUTHERN receive a 5% upfront discount on supplies, pharmaceuticals, and equipment. In addition, a portion of each purchase made by AAOMS and AAP members with ACE SOUTHERN is paid to AAOMS and AAP to invest in programs that provide added member benefits. Our goal is to be a partner in the success of dental surgical practices nationwide.


**ACE SOUTHERN**

 A  HENRY SCHEIN® BRAND





## ALLOGRAFTS



### alloOss ALLOGRAFT PARTICULATE AND BLOCK

alloOss Allograft is offered in particulate and block. alloOss is a safe, predictable and effective solution for providing a scaffolding for cell ingrowth and promoting the growth of new bone.

#### Natural Allograft Bone

alloOss mineralized Allograft Particulates and Blocks preserve natural collagen and minerals with the bony structure of allograft. The existence of these natural minerals and collagen facilitate remodeling of the host bone suitable for implantation. alloOss products are designed to promote new bone formation.

#### Safe and Effective

These products have been processed and sterilized to the highest standards set forth by the American Association of Tissue Banks (AATB®) and the U.S. Food and Drug Administration (FDA) regulations. alloOss allograft is obtained and processed in conjunction with AATB accredited tissue banks.

#### Functional Quality Comparison: Cancellous and Cortical

Particulate Qualities	Cancellous	Cortical
Osteoconductive Function	★ ★ ★	★ ★
Space Maintenance	★ ★	★ ★ ★
Density	★ ★	★ ★ ★
Volume Enhancement	★ ★	★ ★ ★

### Cleansing Process for alloOss



**Phase 1:**  
Stringent screening procedures for donor selection.



**Phase 2:**  
Initial physical inspection and debridement to eliminate substandard tissue and aseptic placement in canisters, reducing risk of tissue contamination. Tissue is processed via minimal manipulation in cGTP conditions in ISO 5 (Class 100) clean rooms using procedures and screening criteria that meet the requirements of the AATB.



**Phase 3:**  
Cleansing reaches deep within the tissues with a process that sustains consistency. The process, which uses mechanical energy and rotation, is customized based on specific tissue type and weight. Microbiological testing is performed before and after processing to ensure safety of the final product.



**Phase 4:**  
Low dose low temperature irradiation provides the tissue with a Sterility Assurance Level (SAL) of 10<sup>-6</sup> without compromising the mechanical integrity of the allograft tissue.



**Phase 5:**  
Full water immersion extraction, as opposed to batch swab, is taken for increased accuracy of microbial presence reading.

alloOss® is a registered trademark of ACE Surgical.

AATB® is a registered service mark of the American Association of Tissue Banks.



## ALLOGRAFTS

**alloOss**  
**MINERALIZED PARTICULATE**

alloOss Allograft Particulates offer the structural strength required to maintain space and volume during the remodeling phase. Used alone or as a composite graft, alloOss Particulates are an effective alternative to intraoral graft harvesting.

- Provides scaffold for cell ingrowth
- Remodels completely
- Predictable Guided Bone Regeneration
- Stabilizes implants after 4-6 months
- Fills voids and extensive bone defects
- Regeneration of periodontal defects

**Mineralized Cancellous Particulate**

1117141	250-1,000 mic.	0.5cc
1117143	250-1,000 mic.	1.0cc
1117144	250-1,000 mic.	2.0cc
1117757	1,000-2,000 mic.	0.5cc
1117758	1,000-2,000 mic.	1.0cc
1117775	1,000-2,000 mic.	2.0cc

**Mineralized Cortical Particulate**

1117195	250-1,000 mic.	0.5cc
1117358	250-1,000 mic.	1.0cc
1117167	250-1,000 mic.	2.0cc
2060042	500-1,000 mic.	0.25cc
1118744	1,000-2,000 mic.	0.5cc
1117778	1,000-2,000 mic.	1.0cc
1118901	1,000-2,000 mic.	2.0cc

**Mineralized 50-50 Cortico/Cancellous Particulate**

1405111	250-1,000 mic.	0.25cc
1117148	250-1,000 mic.	0.5cc
1117149	250-1,000 mic.	1.0cc
1117156	250-1,000 mic.	2.0cc
1117782	1,000-2,000 mic.	0.5cc
1117783	1,000-2,000 mic.	1.0cc
1117784	1,000-2,000 mic.	2.0cc



SAVE an additional 3% with scheduled deliveries on marked items. See inside front cover for details.

**NEED PRICES?** Follow the link below, or scan the QR code, to view retail pricing. For account specific pricing, please log into your account on our website.

[acesouthern.com/catalog/regen24/page/5](https://acesouthern.com/catalog/regen24/page/5)







## ALLOGRAFTS

**alloOss**  
**NATURAL BLEND PARTICULATE**

alloOss Natural Blend is a perfect blend of both cortical and cancellous bone particles, allowing for a more natural mirroring of the composition of human bone; making it a perfect solution for promoting the growth of new bone.

**Mineralized Cortico/Cancellous Particulate**

1337144	500-1,000 mic.	0.25cc
1337145	500-1,000 mic.	0.5cc
1337146	500-1,000 mic.	1.0cc
1337147	500-1,000 mic.	2.0cc

**Mineralized Cortico/Cancellous Particulate In A Syringe**

1432411	500-1,000 mic.	0.5cc
1432412	500-1,000 mic.	0.75cc

**Mineralized/Demineralized Cortico/Cancellous Particulate**

1405102	500-1,000 mic.	0.25cc
1405103	500-1,000 mic.	0.5cc
1405105	500-1,000 mic.	1.0cc
1405108	500-1,000 mic.	2.0cc



SAVE an additional 3% with scheduled deliveries on marked items. See inside front cover for details.



## ALLOGRAFTS

**alloOss**  
**DEMINERALIZED PARTICULATE**

alloOss Demineralized Cortical Bone is appropriate for use in any procedure where bone repair is desired. The process has been validated to maintain osteoinductivity to ensure the highest quality and efficacy for your bone regeneration procedures.

**Demineralized Cortical Bone**

1266624	125-710 mic.	0.25cc
1266560	125-710 mic.	0.5cc
1266561	125-710 mic.	1.0cc
1266562	125-710 mic.	3.0cc


**alloOss**  
**PUTTY**

alloOss Putty is 100% human allograft containing mineralized cancellous and cortical chips and demineralized cortical fibers. It is terminally sterilized bone allograft with osteoconductive and osteoinductive properties. It may be used with autologous bone, xenograft, allograft or synthetic bone graft or may be used alone as an individual bone allograft.

**Putty**

2060041	250-850 mic. plus fibers	0.5cc
2060040	250-850 mic. plus fibers	1.0cc

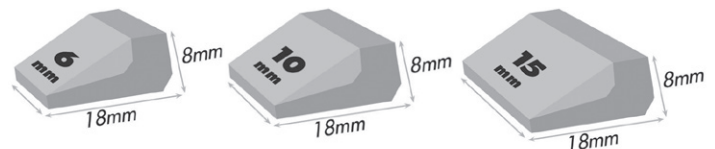

**alloOss**  
**BLOCK GRAFT**

A cortico/cancellous block for restoring bone volume in severely resorbed ridges without the harvesting of autogenous block graft from the patient.

- Approximate healing in 5-6 months
- Cancellous component for rapid healing and revascularization of host bone to the new graft
- Maintains strength and volume with predictable remodeling
- Cortical component for strength and rigidity of the graft with volume enhancement

**Cortico/Cancellous Block Graft**

1118534	18 x 6 x 8mm	each
1416833	18 x 10 x 8mm	each
1117146	18 x 15 x 8mm	each



SAVE an additional 3% with scheduled deliveries on marked items. See inside front cover for details.

**NEED PRICES?** Follow the link below, or scan the QR code, to view retail pricing. For account specific pricing, please log into your account on our website.

[acesouthern.com/catalog/regen24/page/7](https://acesouthern.com/catalog/regen24/page/7)

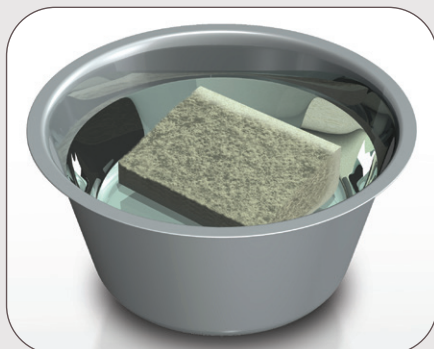




## TUTORIALS

### HYDRATING alloOss® BLOCK

Pre-soak alloOss Block in 0.9% Sodium Chloride (Sterile Saline)

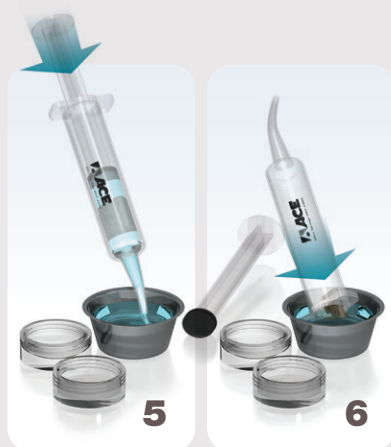
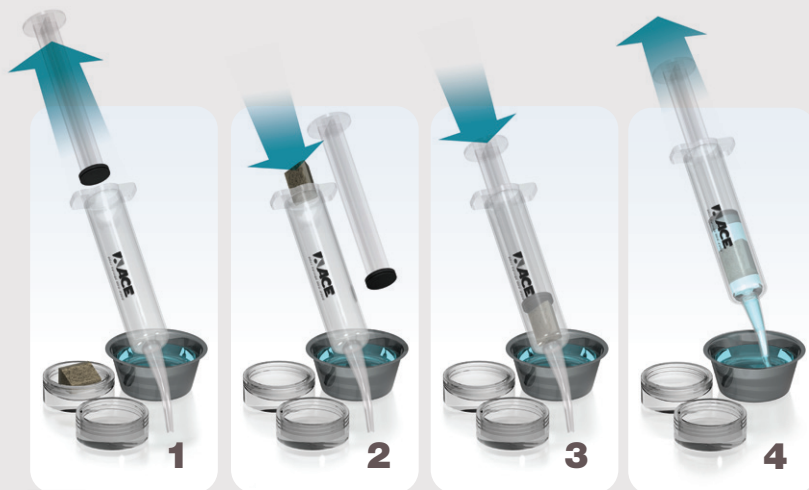


**Prep Time: 30 minutes**

- Pour 0.9% Sodium Chloride (Sterile Saline) into a sterilized instrument cup (1464361) halfway or high enough to cover the block.
- Place the alloOss Block into the sterile saline and soak for 30 minutes.

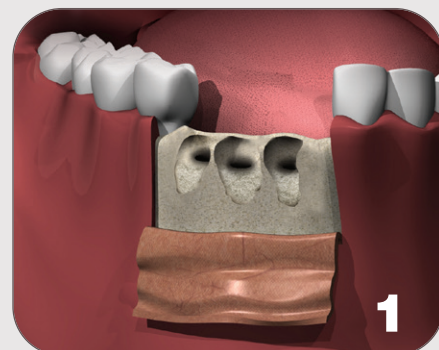
### QUICK HYDRATION TECHNIQUE

Using a 20cc Hydrating Syringe and 0.9% Sodium Chloride (Sterile Saline)



**Prep Time: 3-5 minutes**

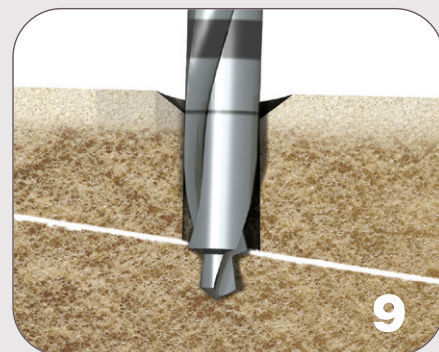
1. Remove the plunger from a sterile 20cc syringe (1463042).
2. Place alloOss bone block into syringe.
3. Replace the syringe plunger.
4. Pull the plunger to draw the sterile saline into the syringe, fill halfway. Purge the air out of the syringe.
5. Create pressure by pressing the plunger while the syringe tip is held firmly against the bottom of the bowl, or against a gloved finger. Maintain pressure for approximately 3-5 minutes.
6. Remove the block from the syringe and place it into a bowl of Sodium Chloride until ready to use.



Loss of alveolar bone volume, with buccal wall dehiscence, subsequent to tooth loss.



Using a bone holding forceps (1150077 p.35), hold the block with the guide in place and trim the bone graft to its final size. Smooth out any rough edges.



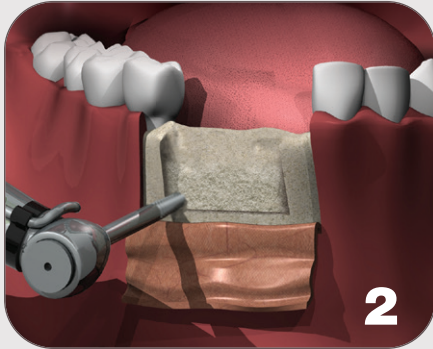
Carefully use the 1.1mm Pilot Twist Drill (1467036 p.28) to create ONLY an 0.8mm deep pilot hole into the host bone.



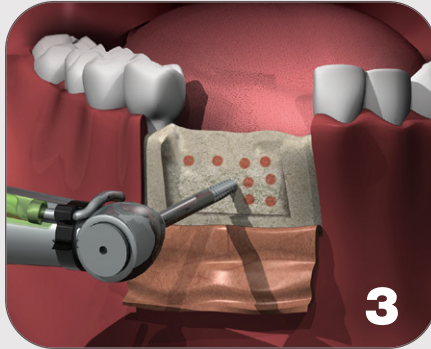
## TUTORIALS

## TUTORIAL: ALVEOLAR AUGMENTATION WITH BUCCAL DEHISCENCE BLOCK GRAFT

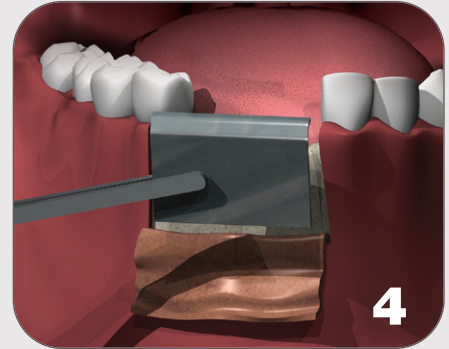
Using alloOss® Allograft Block, ACE Surgical Instruments and TruFIX TruSCREWS



Create inlay in recipient site for future block graft, using fissure or round burs.



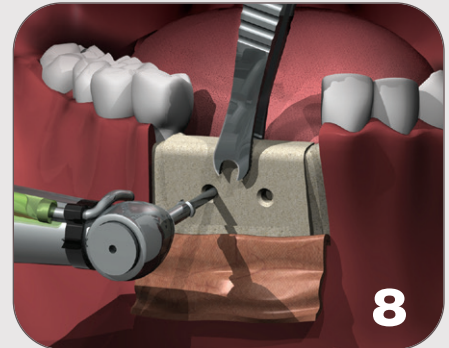
Create bleeding holes of 0.8 to 1.1 mm diameter in floor of inlay preparation.



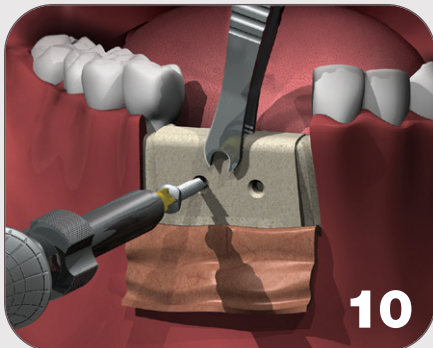
Make a template of inlay site using titanium or aluminum foil to create outline for graft.



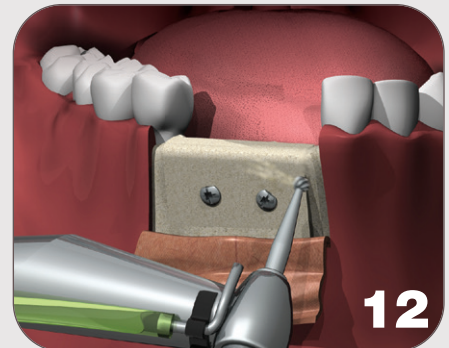
Use a Contra Angle Two-Step Countersink Bur to make the screw access hole through the graft to the 1.6 mm diameter portion of the block graft. (See step 7 for a detailed view).



Hold the block graft with the forceps in intimate contact with the inlay recipient site. Use the 1.1 mm Pilot Twist Drill (1467036 **6** p.28) to create a pilot hole in the host bone site. (See step 9 below for a detailed view).



Place the appropriate length, 1.5 mm diameter TruFIX TruSCREWS through the graft holes. The screw head should tighten on the graft outer cortex, the screw threads engaging only the recipient site bone. The channel through the graft must NOT be touched by the screw threads (see step 11 for a detailed view).



Care is taken to smooth all sharp edges to avoid tissue dehiscence.

**OPTION:** Fill in any voids with autogenous bone, NuOss or alloOss® and cover with a resorbable collagen membrane.

The procedures and techniques presented throughout this catalog are intended to provide basic reference only and should not be substituted for the complete surgical procedure being performed by a licensed practitioner. A complete understanding and execution of the techniques and procedures

presented within this catalog are the full responsibility of the licensed practitioner. These procedures and techniques are NOT TO BE SUBSTITUTED for the practitioner's complete knowledge, education, experience or for any instrumentation or product instruction for use.





## ALLOGRAFTS



### Osteocel® Plus Allograft Bone Matrix

2080067

Cellular Allograft Bone Matrix

1cc vial

Osteocel® and Osteocel® Plus are federally registered trademarks of NuVasive, Inc.

#### Footnote References:

\* Data on file with Osiris Therapeutics

#### Important Ordering Details

- Due to the nature of the product, the order and delivery of Osteocel® Plus needs to be carefully coordinated. Osteocel® Plus is not available for purchase online. Osteocel® Plus requires Priority Shipping and Handling, which is in addition to prices shown. Please call for ordering details.

## OSTEOCEL PLUS CELLULAR ALLOGRAFT BONE MATRIX

Osteocel® Plus mimics the biological profile of autograft. The proprietary processing technology used to produce Osteocel® Plus results in a viable bone matrix that preserves the native Mesenchymal Stem Cells (MSCs) and Osteoprogenitors found in marrow-rich bone. It is the first product to have the desired beneficial osteoconductive, osteoinductive and osteogenic properties of autograft. Osteocel® Plus allows surgeons to offer a complete solution without the added risk and cost of performing a secondary autograft procedure.

#### Viable Cell Content

Each lot is tested for cell concentration, cell viability, and cell activity (osteogenic potential). The osteogenic potential arises from the mesenchymal and osteoprogenitor cells in Osteocel Plus. Following processing of marrow-rich bone, release testing demonstrates osteogenic potential according to the following criteria:

- Rich supply of osteopotent cells: Greater than 250,000 cells/cc
- Viability: Greater than 70% cell viability
- Positive osteogenicity: In vitro cell culture assay

#### Safety Profile

- Aseptic tissue processing.
- Antimicrobial treatment of tissue.
- Sterility cultures performed on every lot.
- Selective immunodepletion process.
- No evidence of ectopic tissue formation or inflammatory cellular response with experimental high doses of MSCs cells.\*

#### Donor Testing

- Human Immunodeficiency Virus Type 1 Antibody
- Human Immunodeficiency Virus Type 2 Antibody
- Hepatitis C Virus Antibody
- Hepatitis B Surface Antigen
- Hepatitis B Core Antibody
- Rapid Plasma Reagin or Serological Test for Syphilis (RPR or STS)
- HIV/HCV/HBV (NAT) Nucleic Acid Test (as required)

#### Donor Screening

- Medical and social history evaluation.
- Physical examination.
- Medical record evaluation, including autopsy report (if performed).
- Licensed physician review and release of every donor record.

#### Quality Assurance

- GTP compliant according to FDA regulations.
- All applicable state licensure / registrations.
- Processed at an AATB® Accredited Tissue Bank



### Consider the Benefits of our In-Office CRYOGENIC FREEZER PROGRAM

- Maximize treatment planning options
- Safely store **Osteocel Plus** for up to 5 years (or until expiration date on product)
- Fits under counter-tops
- Inquire for complete program details

#### Freezer Storage Specifications:

Temperature: -50° to -122°F (-45° to -86°C)

Dimensions: 29"h x 20"w x 22"d

Capacity: 1 Cubic Foot Storage



## ALLOGRAFTS

## INDUCE Oi-9™ BIOIMPLANTS

### Regeneration Naturally™

#### Unlocking Growth Factors to Promote Natural Bone Regeneration

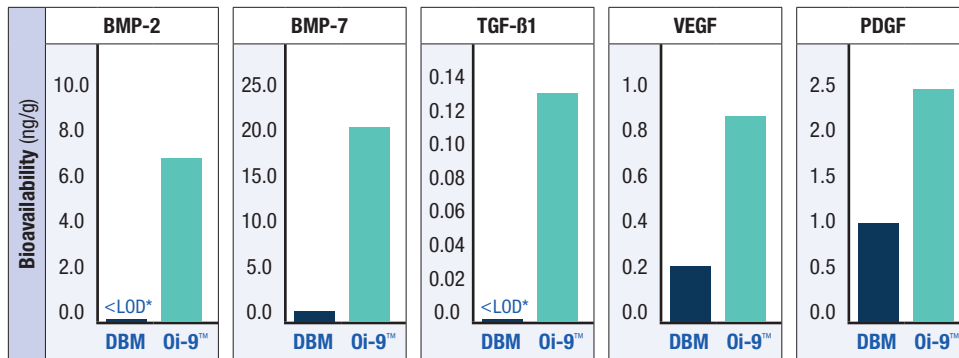
- INDUCE Oi-9™ Micro Particulate
- INDUCE Oi-9™ FiberMatrix

#### INDUCE Oi-9™ uses the NMP® Technology (Natural Matrix Protein)

The NMP process unlocks the growth factors naturally found in bone, making them bioavailable.

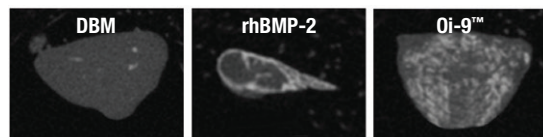
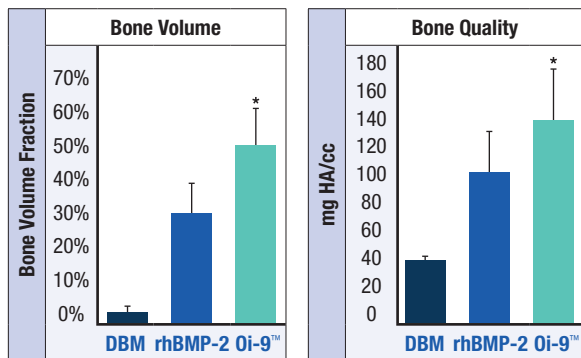
#### Growth factors with NMP Technology

##### Bioavailability\*\*



\* <LOD - Below Limit of Detection

#### Bone Healing \*\*



MicroCT images of DBM, rhBMP-2 and Oi-9™ implants 28 days post implantation. Grey mass is unmineralized tissue. White areas within the mass are mineralized bone. \*\*

\* Statistically significant, p<0.01

\*\* Kohen Y., Shivanna S. and Peel SAF. Evaluation of Natural Matrix Proteins (NMP) Bone Allograft in vitro and in vivo. ASBMR. LB SUN-908, 2022.

Oi-9™ is trademark of Induce Biologics.



INDUCE Oi-9™  
Micro Particulates



INDUCE Oi-9™  
FiberMatrix

#### INDUCE Oi-9™ Micro Particulates

1475852	cortical particulates	.25mm -1mm	0.5cc vial
1475851	cortical particulates	.25mm -1mm	1.0cc vial

#### INDUCE Oi-9™ FiberMatrix

1475849	cortical fibers and cortical particulate	.25mm -1mm	0.5cc vial
1475850	cortical fibers and cortical particulate	.25mm -1mm	1.0cc vial

**NEED PRICES?** Follow the link below, or scan the QR code, to view retail pricing.  
For account specific pricing, please log into your account on our website.

[acesouthern.com/catalog/regen24/page/11](https://acesouthern.com/catalog/regen24/page/11)







## XENOGRAFTS



Holds together  
when hydrated for  
ease of handling

## NuOss XENOGRAFT PARTICULATE

## A Reliable Bone Substitute Used by Dental Professionals Worldwide

NuOss natural cancellous and cortical bone matrix is produced by the removal of all organic components from bovine bone. Due to its natural porous structure, NuOss is physically and chemically comparable to the mineralized matrix of human bone.

The proprietary manufacturing process of NuOss allows for maintenance of the naturally occurring bone mineral structure, including macroscopic and microscopic structures. Due to this trabecular architecture with interconnecting macro and micro pores, the ingrowth of new bone and associated vascularization at the grafting site is optimized.

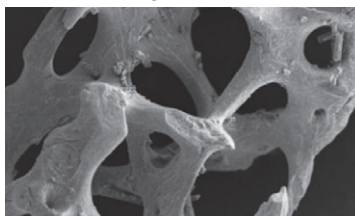
NuOss may be used with autogenous bone where there is an insufficient quantity of bone to fulfill the needs of the proposed surgical procedure.

**Handling:** The structure of NuOss aids in particulate hydration and delivery of the product to the defect.

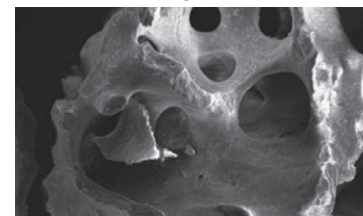
**Particle Distribution:** NuOss maximizes the distribution of the preferred particle sizing within desired ranges.

**Particle Structure and Porosity:** NuOss maintains the high porosity and trabecular structure of natural mineralized bone and maximizes the potential for angiogenesis.<sup>1</sup>

NuOss 50x magnification

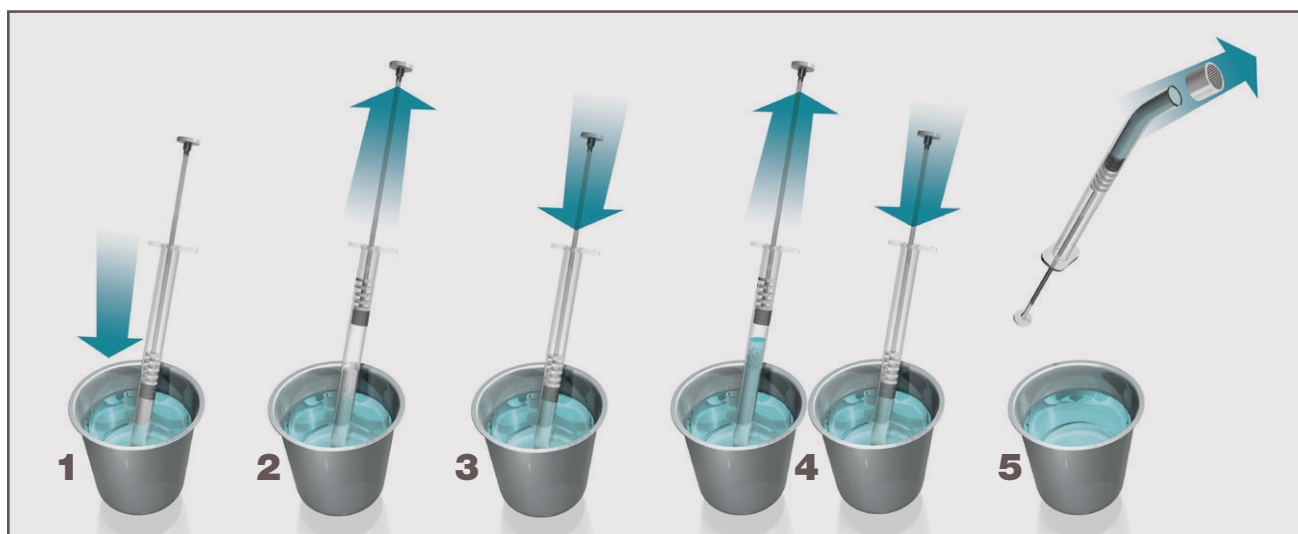


Bio-Oss® 50x magnification



NuOss® is a registered trademark of ACE Surgical.

Bio-Oss® is a registered trademark of ED. Geistlich Söhne AG.



1. Klenke FM, Liu Y, Yuan H, Hunziker EB, Siebenrock KA, Hofstetter W. Impact of pore size on the vascularization and osseointegration of ceramic bone substitutes in vivo. J Biomed Mater Res A. 2008 Jun 1; 85(3): 777-86.



## XENOGRAFTS

## NuOss PARTICULATE

## NuOss Cancellous Particulate

1260499	0.25-1.0mm	0.25g	0.6cc
1260505	0.25-1.0mm	0.5g	1.2cc
1260513	0.25-1.0mm	1.0g	2.4cc
1260506	0.25-1.0mm	2.0g	4.7cc
1260508	1.0-2.0mm	0.5g	1.7cc
1260510	1.0-2.0mm	2.0g	6.8cc

## NuOss Cortical Particulate

1090007	0.50-1.0mm	0.25g	0.4cc
1090008	0.50-1.0mm	0.5g	0.8cc
1090009	0.50-1.0mm	1.0g	1.6cc
1090010	0.50-1.0mm	2.0g	3.2cc



## NuOss DS

## Cancellous Granules in a Preloaded Delivery Syringe

**Particulate:** NuOss DS contains our best-selling small particle NuOss cancellous.

**Delivery Syringe:** The preloaded NuOss Delivery Syringe makes it easier to hydrate and place the graft material, minimizing preparation time and particulate migration at the surgical site.

## NuOss Cancellous Particulate in a Delivery Syringe

1260507	0.25-1.0mm	0.25cc
1260509	0.25-1.0mm	0.50cc



## HYDRATING NUOSS DS

Remove the sterile pre-loaded NuOss in Delivery Syringe from packaging and, per the IFU, hydrate with osseous coagulum, patient's blood, or sterile saline.

- 1 With the perforated cap left on the syringe, immerse the tip of the syringe in the hydrating fluid.
- 2 Pull up on the plunger to draw the fluid into the syringe.
- 3 With syringe pressed against bottom of basin, push down on the plunger to expel excess fluid/air.
- 4 This pull and push action should be repeated 3 times or until the material is fully hydrated.
- 5 Remove the perforated cap and deliver the hydrated particulate to the defect site.

The procedures and techniques presented throughout this catalog are intended to provide basic reference only and should not be substituted for the complete surgical procedure being performed by a licensed practitioner. A complete understanding and execution of the techniques and procedures presented within this catalog are the full responsibility of the licensed practitioner. These procedures and techniques are NOT TO BE SUBSTITUTED for the practitioner's complete knowledge, education, experience or for any instrumentation or product instruction for use.



SAVE an additional 3% with scheduled deliveries on marked items. See inside front cover for details.

**NEED PRICES?** Follow the link below, or scan the QR code, to view retail pricing. For account specific pricing, please log into your account on our website.

[acesouthern.com/catalog/regen24/page/13](https://acesouthern.com/catalog/regen24/page/13)







## XENOGRAFTS

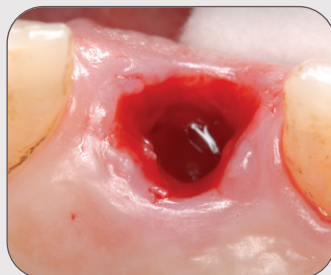
### NuOss COLLAGEN PRODUCTS

Just like NuOss granules, naturally structured NuOss Collagen combines the mineral properties of cancellous particulate with the space maintenance of collagen. This highly manageable combination provides a convenient approach to filling periodontal and maxillofacial defects. With NuOss Collagen products, there is no mixing or loose handling.



#### GUIDED BONE REGENERATION

Using NuOss XC Socket.



Atraumatic tooth extraction without flap reflection. Note: Maintain intact bony walls of the extraction socket and preserve gingival anatomy.



NuOss XC Socket self expanding composite is easily inserted directly into extraction site using the product's self-contained delivery syringe.



Upon contact with blood, NuOss XC expands to fill the entire defect.



## XENOGRAFTS

## NuOss PLUG

### Anorganic Bovine Bone with Collagen

NuOss Plug contains low heat processed anorganic bone that will remodel and support placement of an implant within, on average, 6-9 months. NuOss Plug is easy to place and prevents particulate migration once placed into the surgical site.



## NuOss<sup>®</sup> PLUG



### NuOss Plug

1404357	Tapered, 9 x 15mm	5/box
1404358	Straight, 10 x 20mm	5/box

## NuOss COLLAGEN BLOCK

### Anorganic Bovine Bone with Collagen

NuOss Collagen Block: Available in 3 sizes, NuOss Collagen can be easily trimmed to shape the defect. Hydration can be done prior to insertion or once it has been placed.



## NuOss<sup>®</sup> Collagen



### NuOss Collagen Block

1099742	6 x 7 x 8mm	100mg	each
1098872	8 x 9 x 9mm	250mg	each
1098438	10 x 11 x 12mm	500mg	each

## NuOss XC

### Self-Expanding Composite

**Expansion:** Expanding composite material allows for placement in a compressed form.

Upon hydration/contact with blood, the material will self-expand to fill the entire defect.

**NuOss XC Socket:** Preshaped and ready to place directly into the extraction cavity.

**NuOss XC Sinus:** Upon successful elevation of the sinus membrane, NuOss XC Sinus is placed without pre-hydration, into the sinus cavity.



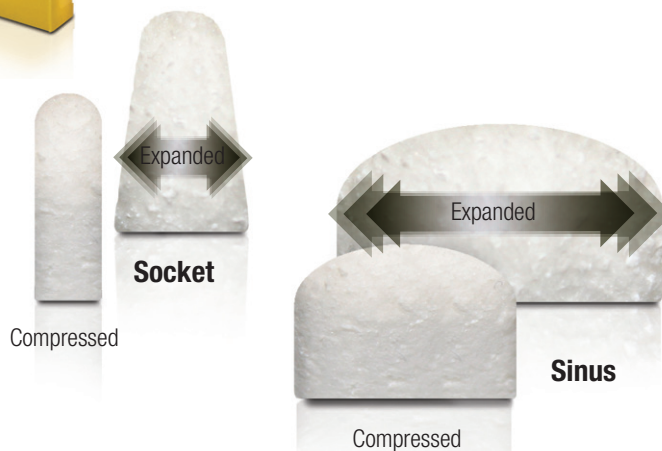
## NuOss<sup>®</sup> XC

### NuOss XC Socket

1175046	6 x 15mm expanded state	each
1175047	9 x 15mm expanded state	each

### NuOss XC Sinus

1175049	17 x 10mm expanded state	each
1175051	22 x 12mm expanded state	each



SAVE an additional 3% with scheduled deliveries on marked items. See inside front cover for details.

**NEED PRICES?** Follow the link below, or scan the QR code, to view retail pricing. For account specific pricing, please log into your account on our website.

[acesouthern.com/catalog/regen24/page/15](https://acesouthern.com/catalog/regen24/page/15)







SYNTHETICS

# CaSO<sub>4</sub>



## CaSO<sub>4</sub> CALCIUM SULFATE HEMIHYDRATE

CaSO<sub>4</sub> is one of the first bone materials ever used in a grafting procedure and maintains a safety record dating back more than 100 years. CaSO<sub>4</sub> is considered one of the clinician's first choices among synthetic bone grafting materials. Calcium Sulfate is sterile, highly purified and continues its bioactivity through the entire healing process. CaSO<sub>4</sub> is totally resorbed at the completion of the healing period.

### CaSO<sub>4</sub> Features


- Osteoconductive
- Inhibits non-osteogenic cells
- Promotes wound healing
- Completely resorbable
- Easy to set-up
- Easy to handle
- Easy to place
- Cost effective
- Combines well with bone grafting particulate

### CaSO<sub>4</sub> Kit Contents

- 0.5 gram or 1.0 gram calcium sulfate powder in a sterile mixing dish
- Regular set liquid

1118200	0.5 gram	kit
1117286	1.0 gram	kit



SAVE an additional 3% with scheduled deliveries on  marked items. See inside front cover for details.



SYNTHETICS

**synOss™ SYNTHETIC BONE PARTICULATE**

synOss Synthetic Mineral is an osteoconductive calcium phosphate based bone graft material with a carbonate apatite structure similar to the structure of human bone.

**synOss™ is recommended for:**

- Augmentation or reconstructive treatment of alveolar ridge
- Filling of periodontal defects and after root resection/hemisection, apicoectomy, and cystectomy
- Filling of extraction sockets to enhance preservation of the alveolar ridge
- Elevation of maxillary sinus floor
- Filling of periodontal defects in conjunction with products intended for GTR and GBR
- Filling of peri-implant defects in conjunction with products intended for Guided Bone Regeneration
- Filling of infrabony periodontal defects

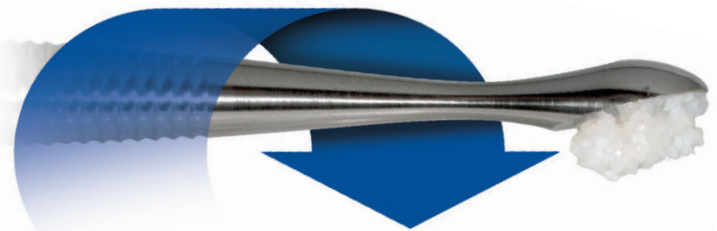
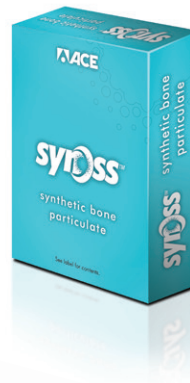
**Material Composition**

- The material composition is calcium phosphate in a carbonate apatite structure. The product is supplied in granular form, and is sterile, non-pyrogenic, and for single use only.

Product	synOss	NuOss®
Calcium (wt%)	33.5 ± 2.1	36.3 ± 3.7
Phosphate (wt%)	46.7 ± 0.7	49.2 ± 2.1
Calcium (mM/kg)	8428 ± 569	9065 ± 940
Phosphate (mM/kg)	5905 ± 92	6225 ± 276
*Ca/P Ratio	1.43 ± 0.07	1.45 ± 0.09


\*Results represent an average of 2 measurements ± S.D.

1260515	0.25 gram	0.35-1.0mm particles	0.5cc
1260516	0.5 gram	0.35-1.0mm particles	1.0cc
1260517	1.0 gram	0.35-1.0mm particles	2.0cc
1260518	2.0 gram	0.35-1.0mm	3.5cc



When synOss is hydrated it holds to the delivery spoon (#1150073 **C** p.35 or **F** p.52), even when it's inverted.



SAVE an additional 3% with scheduled deliveries on  marked items. See inside front cover for details.

**NEED PRICES?** Follow the link below, or scan the QR code, to view retail pricing. For account specific pricing, please log into your account on our website.

[acesouthern.com/catalog/regen24/page/17](https://acesouthern.com/catalog/regen24/page/17)







## GRAFTING CASE STUDY

## Extraction, Immediate Implant Placement, and Simultaneous Regeneration of the Maxillary Anterior with alloguide® gf

alloguide® gf

lyophilized placental membrane

Treating Clinician: Jason J. Augustine, DDS, MS, Phoenix, AZ

## Clinical Case Presentation

A 60-year-old male patient with no medical concerns presented with fractured tooth number 8, the maxillary right central incisor. He had a history of trauma to the maxillary anterior teeth when he was in his 20s. Radiographic examination revealed radiolucency at the apices of teeth Nos. 8 and 9, secondary to previous endodontic therapy, and carious lesions under the restorations. The proximity and root morphology of tooth No. 7

would make it difficult to place implants in sites 8 and 9 in an ideal location. Teeth Nos. 7-10 were non-restorable and had a poor prognosis. The patient desired a long-term solution for his smile and accepted the treatment plan, which consisted of in-office surgical intervention to extract the hopeless teeth and immediate implant placement with simultaneous regeneration for accelerated healing.

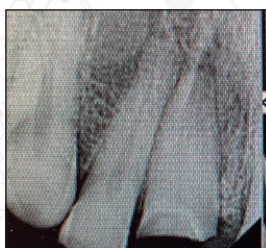


Fig 1.

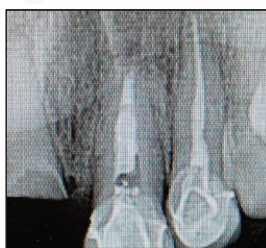


Fig 2.

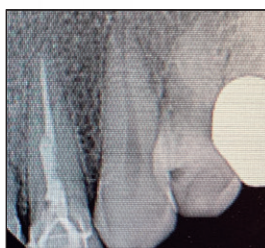


Fig 3.

On the day of surgery, a local anesthetic was administered. The hopeless teeth were carefully and atraumatically extracted to protect the integrity of the sockets and debrided with curettes to remove the granulation tissue.



Fig 4. Without raising a flap, tooth sites 8 and 9 were prepared for the placement of dental implants.

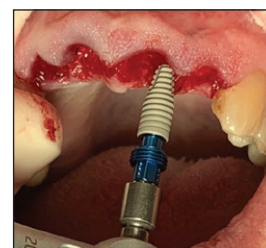


Fig 5. Two Infinity Octagon Bone Level Tapered (BLT) Dental Implants 4.1mm x 10mm were placed in tooth positions 8 and 9.



Fig 6. A mucoperiosteal full-thickness flap was raised to expose the surgical site from canine to canine. Cover screws were placed onto the implants, and a mixture of graft material was placed.



Fig 7. The graft material was then covered with a resorbable alloguide gf lyophilized placental amnion chorion membrane.

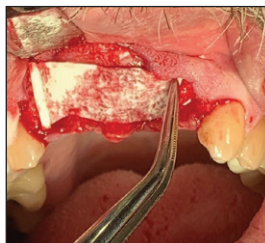


Fig 8. The alloguide gf membrane was placed dry over the graft material.



Fig 9. The membrane was hydrated with the patient's heme and tucked under the soft-tissue flaps.



Fig 10. The soft-tissue flaps were repositioned and closed with a 5-0 Chromic Gut Suture (ACE SURGICAL) using an interrupted technique to obtain primary closure.



## GRAFTING CASE STUDY



Fig. 11. A periapical radiograph was taken post-operatively.



Fig. 12. The sutures were removed at the first postoperative follow-up appointment at ten days. The soft tissues healed uneventfully.



Fig. 13. A postoperative clinical photograph taken on day 14 postoperatively revealed excellent soft-tissue healing.

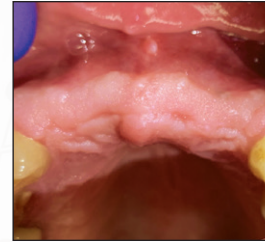


Fig. 14. At three months post-implant placement, complete soft-tissue maturation was achieved.

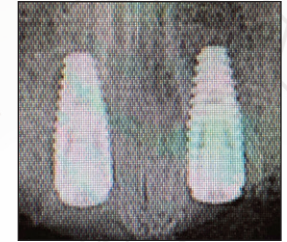


Fig. 15. A periapical radiograph revealed excellent healing, osseointegration of the implants, and regeneration of the extraction sockets.

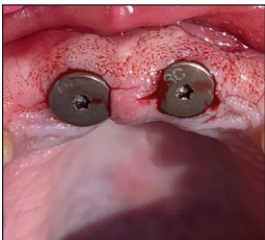


Fig. 16. The implants were exposed using a tissue punch technique, and healing cuffs were placed.

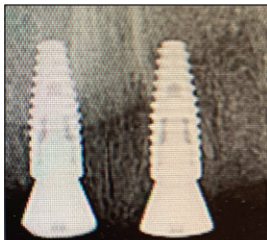


Fig. 17. A periapical radiograph was taken to ensure proper seating of the healing cuffs.



Fig. 18. A four-unit zirconia fixed partial denture supported by the two implants was inserted, and the occlusion was adjusted appropriately.

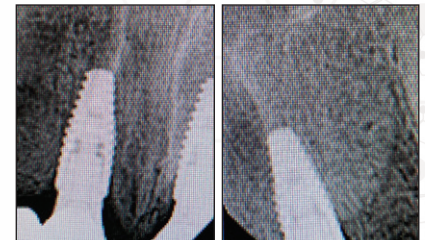


Fig. 19. Periapical radiographs taken seven months post-restoration showed stable bone levels.

### Summary

In this clinical case presentation, an alloguide gf lyophilized placental membrane was selected as a barrier membrane to support more predictable wound closure allowing more accelerated treatment plans even in clinical situations of combined procedures.

alloguide gf membranes contain an amnion layer and chorion layer. The amnion layer includes collagen types III, IV, and V, and the chorion layer has collagen types I, III, IV, V, and VI. Additionally, alloguide gf membranes contain laminins, basement membrane proteins that promote cell adhesion, migration, and differentiation. This amnion basement membrane resembles what is found in the oral mucosa

and gingival tissue—including an exceptionally high affinity to gingival epithelial cells.<sup>1</sup> It contains matrix metalloproteinase inhibitors helping to reduce inflammation. Besides the immunosuppressive characteristics, placental membranes have a bacterial barrier and prevent excessive bacterial colonization. The clinician felt this membrane is ideally suited for this clinical case and medically compromised patients, older patients, tobacco users, and patients with xerostomia.

Restorative Colleague: Dr. D. Bakery, Phoenix, AZ.

<sup>1</sup> Amniotic Membrane: A novel Material for Regeneration and Repair: Chopra and Thomas, J Biomim Biomater Tissue Eng 2013, 18:1

### Jason J. Augustine, DDS, MS

Dr. Augustine has been practicing Periodontics and Implant Dentistry in Phoenix since 2000. He earned his Doctorate in Dentistry and Masters in Periodontology from The Ohio State University. Dr. Augustine performs various

non-surgical, laser-assisted, and surgical treatments to manage periodontal disease. He also has extensive training in cosmetic perio-plasty procedures and the surgical aspects of implant therapy. As a leader in these areas, he regularly lectures on these

topics and holds positions on several scientific advisory boards and advanced study clubs. In his North Phoenix practice, Dr. Augustine practices the most current advances in the field of Periodontology.

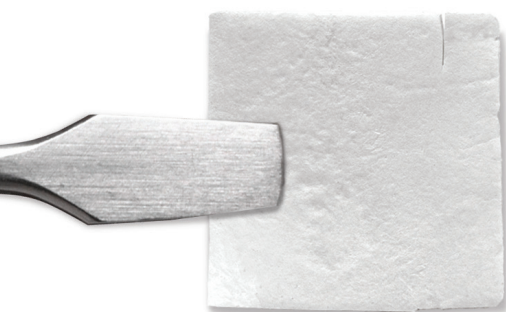






## MEMBRANES

# alloguide® gf



Shown Actual Size



10 x 10mm

15 x 20mm

20 x 30mm



## alloguide gf GROWTH FACTOR, RESORBABLE MEMBRANE

alloguide gf is a lyophilized placental barrier membrane that preserves its endogenous growth factors associated with the repair of oral wounds. alloguide gf is an ideal membrane to support Guided Tissue Regeneration (GTR) and Guided Bone Regeneration (GBR) dental procedures as it retains the high levels of regenerative growth factors naturally present in the placental membrane.

### The GF stands for Growth Factor

Placental Tissue is a rich source of extracellular matrix proteins and growth factors that have been shown to be involved in the natural wound repair process<sup>1</sup> and its components are commonly used in a wide array of therapeutic applications, including wound care and orthopedics.<sup>2,3</sup> The processing and preservation of the placental tissue allograft will influence the preservation of those growth factors.<sup>4,5</sup>

### A Sampling of the Preserved Growth Factors<sup>6</sup>

Growth Factor	Present	Growth Factor	Present
BDNF	✓	HGF	✓
bFGF	✓	OPG	✓
FGF	✓	PDGF	✓
BMP-4	✓	SCF	✓
BMP-5	✓	TGF	✓
BMP-7	✓	TGFβ-3	✓
EGF	✓	VEGF	✓

### Characteristics of alloguide gf:

- Preserves protein structures and maintains bioactive capabilities of important wound healing elements of placental membrane
- Preserves extracellular matrix
- Maintains natural tissue thickness
- Excellent handling and ease of application

### alloguide gf Safety:

- AATB® standards, FDA regulations and stringent internal processes, policies and procedures
- Processed under aseptic conditions
- Sterility testing performed on every lot

### alloguide gf Processing:

- alloguide gf is processed using a proprietary freeze-drying solution during lyophilization

### alloguide gf

1426828	8 x 8mm	each
1405098	10 x 10mm	each
1405100	15 x 20mm	each
1405101	20 x 30mm	each

alloguide® is a registered trademark of ACE Surgical.

### References

1. Chopra and Thomas 2013. J Biomim Biomater and Tissue Eng
2. Brantley and Verla 2015. Advances in Wound Care
3. Heckmann et al 2016. American Journal of Orthopedics
4. McQuilling et al 2017. Wounds
5. Paolin et al 2016. Cell Tissue Bank
6. Data on File



SAVE an additional 3% with scheduled deliveries on marked items. See inside front cover for details.



## MEMBRANES

### perFORM RESORBABLE COLLAGEN MEMBRANE

Activate regeneration! perFORM Collagen Membranes have a permeable, bilayer structure. The layers contain highly purified collagen fibers that act to support new bone growth. The densely packed collagen bundles present in the outer layer prevent ingrowth of epithelial cells into the repair site. The perFORM membrane is fully resorbable, while allowing sufficient time for osteogenesis to occur, and requires no second surgery to remove.

#### High Performance

##### Strength

- Easily cut wet or dry
- May be sutured or tacked without tearing

##### Hydrophilic

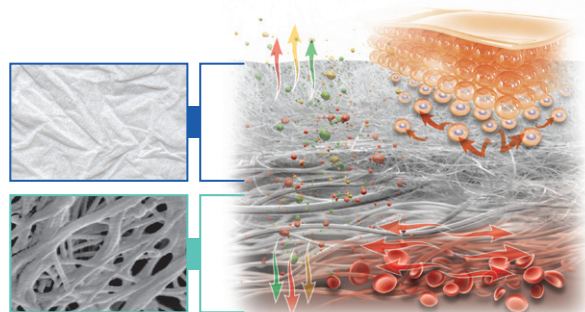
- Permeable dual layer design allows passage of fluids
- Loosely packed collagen fibers on the rough side support new bone growth
- Densely packed fibers on the smooth side impede tissue growth into the site

##### Conformable

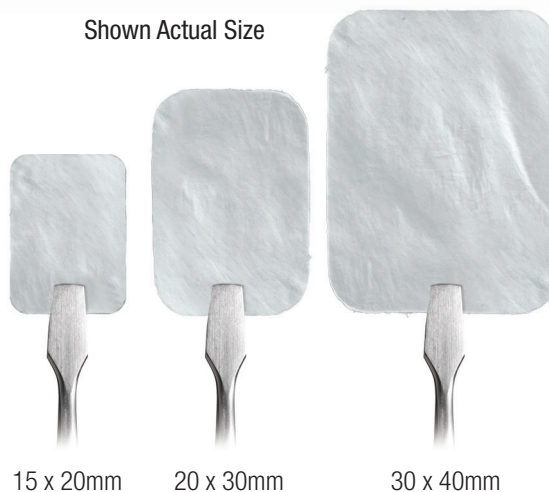
- Easily conforms to the contours of the defect

#### perFORM is indicated for use in:

- Augmentation around implants placed in immediate extraction sockets
- Augmentation around implants placed in delayed extraction sockets
- Filling of bone defects after root resection or removal of retained teeth
- Guided Bone Regeneration (GBR) in dehiscence defects
- Guided Tissue Regeneration (GTR) procedures in intra-bony periodontal defects



Shown Actual Size



15 x 20mm

20 x 30mm

30 x 40mm

#### perFORM

2080062	15 x 20mm	each
2080063	20 x 30mm	each
2080064	30 x 40mm	each

perFORM® is a registered trademark of ACE Surgical.



**NEED PRICES?** Follow the link below, or scan the QR code, to view retail pricing. For account specific pricing, please log into your account on our website.

[acesouthern.com/catalog/regen24/page/21](https://acesouthern.com/catalog/regen24/page/21)



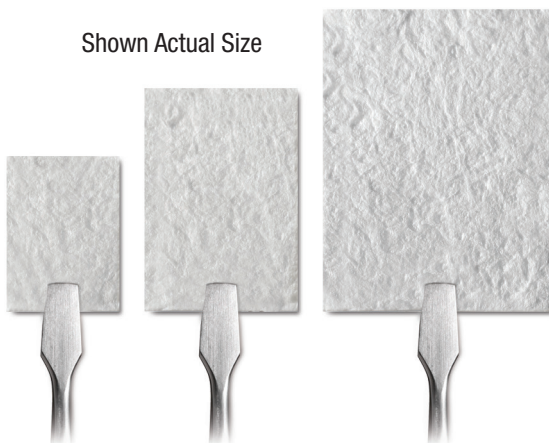




## MEMBRANES



Shown Actual Size



15 x 20mm

20 x 30mm

30 x 40mm



### conFORM RESORBABLE COLLAGEN MEMBRANE

conFORM is a resorbable collagen membrane matrix made from Type I Bovine collagen. Its pliable characteristics and predictable resorption time of 3-4 months make it an ideal membrane for guiding the healing of bone and surrounding tissue. When hydrated, conFORM will naturally adapt to surgical defects and maintain a high tensile strength, which makes it the ideal membrane for suturing.

With its in vivo stability, permeability and mechanical strength, conFORM is a reliable choice for various clinical applications. When used in conjunction with a bone grafting particulate, conFORM can help mitigate the migration of the particulate from the surgical site. Its resorbability eliminates the need for surgical removal. conFORM is packaged sterile, non-pyrogenic, and for single use.

#### Features

- White, non-friable membrane matrix engineered from highly purified Type I Collagen
- Fully resorbable with a predictable resorption time of 3-4 months<sup>1</sup>
- Guides healing and regeneration of bone and surrounding tissue
- Unique fiber orientation provides high tensile strength for in situ stability of membrane
- Cell occlusive, designed to retard and/or prevent epithelium down growth

#### Advantages

- Conforms to surgical site without re-shaping
- Easy to handle, does not adhere to itself
- Sufficient resorption time for sustained function in bone repair
- Can easily be trimmed during surgery for a final fit
- May be placed with either side against the tissue or bone

#### conFORM

1099383	15 x 20mm	each
1096584	20 x 30mm	each
1098764	30 x 40mm	each

#### References

1. D.Yuen, J. Ulreich, G. Zuclich, H-B. Lin and S-T Li "Prediction of In Vivo Stability of a Resorbable, Reconstituted Type I Collagen Membrane by In Vitro Methods." 2000 Society for Biomaterials - Sixth World Congress.



## MEMBRANES

### RCM<sup>6</sup> RESORBABLE COLLAGEN MEMBRANE

RCM<sup>6</sup> Resorbable Collagen Membrane allows you to guide healing and regeneration of bone and surrounding tissue within your time frame. RCM<sup>6</sup> is intended to aid in the wound healing process within oral surgical procedures, such as: dental implants, bone defects, periodontal defects and ridge augmentations. When used in conjunction with a bone grafting particulate, RCM<sup>6</sup> can help mitigate the migration of the particulate from the surgical site. RCM<sup>6</sup> is packaged sterile, non-pyrogenic, and for single use. Its resorbability eliminates the need for surgical removal.

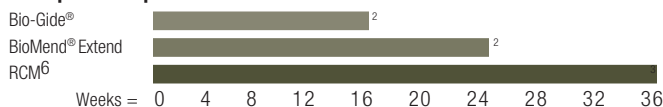
#### Features

- White, non-friable membrane matrix engineered from highly purified Type I Collagen
- Fully resorbable with a resorption time of up to 6 months<sup>1</sup>
- Guides healing and regeneration of bone and surrounding tissue
- Unique fiber orientation provides high tensile strength for in situ stability of membrane
- Cell occlusive, designed to retard and/or prevent epithelium down growth

#### Advantages

- Long resorption time, for sustained function in bone repair
- High mechanical strength for membrane stabilization
- Each piece can be easily trimmed during surgery for a final fit
- May be placed with either side against the tissue or bone

#### Resorption Comparison \*



\* Approximate in vivo resorption time.

#### RCM<sup>6</sup>

1092172	15 x 20mm	each
1092173	20 x 30mm	each
1092174	30 x 40mm	each

RCM<sup>6</sup> is a registered trademark of ACE Surgical Supply.

BioMend<sup>®</sup> Extend is a registered trademarks of Zimmer Dental.

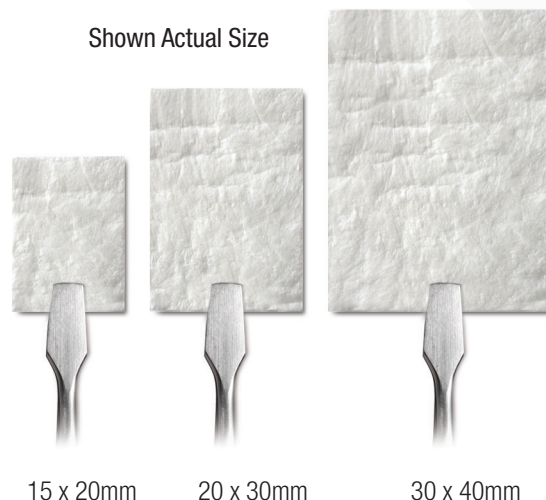
Bio-Gide<sup>®</sup> is a registered trademark of ED. GEISTLICH SOHNE AG.

#### References

1. D.Yuen, J. Ulreich, G. Zuclich, H-B. Lin and S-T Li "Prediction of In Vivo Stability of a Resorbable, Reconstituted Type I Collagen Membrane by In Vitro Methods." 2000 Society for Biomaterials - Sixth World Congress.
2. Reported from the product's Instructions for Use.
3. RCM6 Data on file



Shown Actual Size



15 x 20mm

20 x 30mm

30 x 40mm



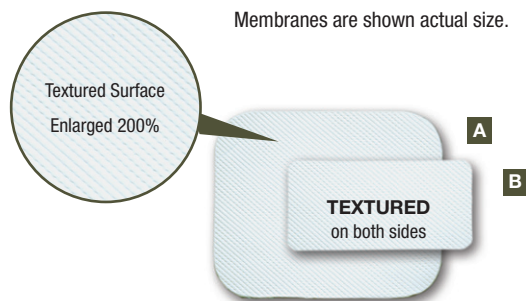
**NEED PRICES?** Follow the link below, or scan the QR code, to view retail pricing. For account specific pricing, please log into your account on our website.

[acesouthern.com/catalog/regen24/page/23](https://acesouthern.com/catalog/regen24/page/23)





## MEMBRANES

**CYTOFLEX® TEFGUARD®  
PTFE BARRIER MEMBRANES**

Cytoflex Tefguard is a non-resorbable membrane for use as a space-maintaining barrier in Guided Tissue and Guided Bone Regeneration procedures. Tefguard is composed of a proprietary micro porous polytetrafluoroethylene (PTFE) thin film.

The construction of the surface and porosity of the material is suitable for adhesion of host cells to the material while preventing passage and integration of bacteria within the interstices of the material. The supple membrane conforms easily to tissue contours, and yet offers sufficient stiffness to maintain space over the bony defect.

The micro-texture surfaces are designed to prevent tissue and bacteria ingrowth. Tefguard Textured design allows for increased flap attachment for additional localized stability. It is intended for use as a barrier membrane in Guided Tissue and Guided Bone Regeneration procedures.

**Tefguard Advantages:**

- Excellent handling, rigidity and easily adaptable
- Can be easily trimmed to desired shape
- Can be easily fixated using either bone tacks or bone screws
- Easily retrieved as one piece
- Resists fibroblasts and bacteria penetration
- Increased capability of host tissue attachment with Tefguard Textured
- Facilitates tissue regeneration despite flap recessions, or incomplete primary closure
- 0.2mm thick
- Sterile

**Textured A**

1260597	25 x 30mm	each
1260603	25 x 30mm	5/pkg

**Textured B**

1260598	12 x 24mm Single extraction	each
1260602	12 x 24mm Single extraction	5/pkg

Cytoflex® and Tefguard® are registered trademarks of Unicare Biomedical.



SAVE an additional 3% with scheduled deliveries on  
marked items. See inside front cover for details.



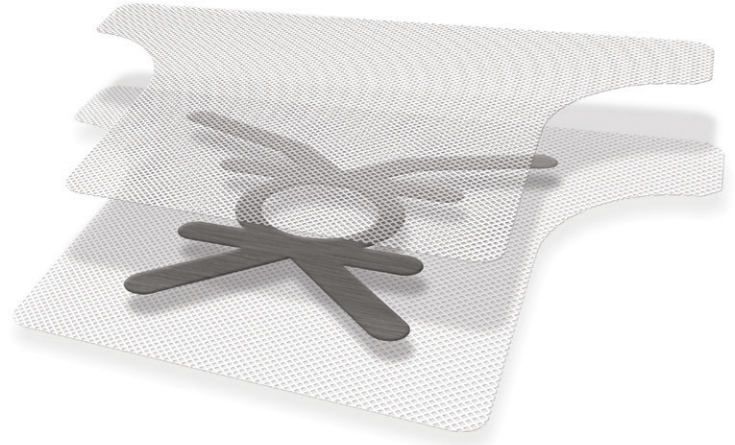
MEMBRANES

**CYTOFLEX® TEFGUARD®  
PTFE TI-ENFORCED MEMBRANES**

TITANIUM REINFORCED PTFE BARRIER MEMBRANES FOR GTR AND GBR PROCEDURES

Cytoflex Tefguard PTFE Textured Membranes with titanium reinforcements are non-resorbable membranes for use as a space-making barrier in Guided Tissue and Guided Bone Regeneration procedures.

- Improved handling, ideal for modeling and shaping around defects
- Dual textured surface allows membrane to be placed either side up or down
- Range of sizes and configurations for large and small defects
- Can be easily trimmed to desired shape (It is recommended to avoid cutting titanium struts when trimming reinforced membranes)
- Can be easily fixated using either bone tacks or bone screws
- Sterile



**Ti-Reinforced Tefguard PTFE Barrier Membrane**

2080055	<b>A</b> 12 x 24mm	each
2080054	<b>B</b> 19 x 26mm	each
2080056	<b>C</b> 25 x 30mm	each
1416842	<b>D</b> 25 x 30 x 41mm	each
2080058	<b>E</b> 32 x 40mm	each

Membranes are shown actual size.



Cytoflex® and Tefguard® are registered trademarks of Unicure Biomedical.

**ETHICON® VICRYL™ KNITTED MESH**

Ethicon Vicryl (polyglactin 910) Knitted Mesh for temporary wound or organ support. Made of an absorbable material, it can provide temporary support during your patients' healing process.

- Undyed
- Sterile

6543200	6" x 6" (15cm x 15cm)	3/box
---------	-----------------------	-------

Ethicon® is a registered trademark of Johnson & Johnson.  
VICRYL™ is a trademark of Johnson & Johnson.



SAVE an additional 3% with scheduled deliveries on marked items. See inside front cover for details.

**NEED PRICES?** Follow the link below, or scan the QR code, to view retail pricing. For account specific pricing, please log into your account on our website.

[acesouthern.com/catalog/regen24/page/25](https://acesouthern.com/catalog/regen24/page/25)








## WOUND HEALING



SAVE an additional 3% with scheduled deliveries on  marked items. See inside front cover for details.

### RESORBABLE COLLAGEN PLUG, FOAM AND TAPE WOUND DRESSINGS

- Provides an excellent matrix to assist in wound healing
- Beneficial in protecting the oral wound site
- Controls minor bleeding due to the intrinsic hemostatic properties of collagen fibers
- Sterile

Features	Plug	Foam	Tape
Fully resorbable	✓	✓	✓
Ideal for applications in oral wounds	✓	✓	✓
Provides an excellent matrix to assist in wound healing	✓	✓	✓
Protects the oral wound bed	✓	✓	✓
Ideal for extraction sockets	✓		
Controls minor bleeding due to the intrinsic hemostatic properties of collagen fibers	✓	✓	✓

#### RC Plug Collagen Plug Wound Dressing

1092177 1cm x 2cm 10/box

#### RC Foam Collagen Foam Wound Dressing

1092175 2cm x 4cm x 3mm 10/box

#### RC Tape Collagen Tape Wound Dressing

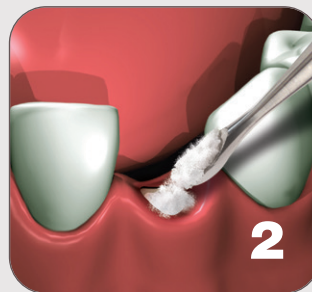
1092176 2.5 x 7.5cm x 1mm 10/box

### TUTORIAL: CREST PRESERVATION OF INTACT ALVEOLUS

Recommended by Dr. Aron Gonshor, PhD, DDS, FRCD(C), FAO



1  
Atraumatic tooth extraction without flap reflection. Note: Maintain intact bony walls of the extraction socket and preserve gingival anatomy.



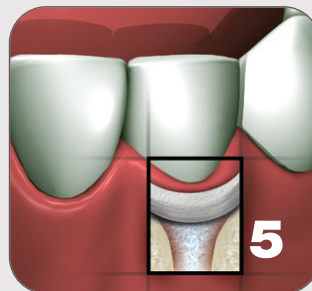
2  
Alveolar socket is grafted to crest with xenograft bone mineral (NuOss®).



3  
A resorbable collagen plug (RCP) is cut to size and compressed in place as a dressing.



4  
Criss-cross and/or mattress sutures are placed.



5  
A removable or fixed prosthesis with an ovate pontic extending 2-3mm subgingivally is placed. This permits plug compression and tissue support.

The procedures and techniques presented throughout this catalog are intended to provide basic reference only and should not be substituted for the complete surgical procedure being performed by a licensed practitioner. A complete understanding and execution of the techniques and procedures presented within this catalog are the full responsibility of the licensed practitioner. These procedures and techniques are NOT TO BE SUBSTITUTED for the practitioner's complete knowledge, education, experience or for any instrumentation or product instruction for use.



## WOUND HEALING

### GLUSTITCH PERIACRYL® 90 TISSUE ADHESIVE REGULAR VISCOSITY

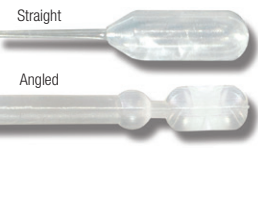
- Effective tissue adhesive which is hemostatic and bacteriostatic
- Excellent alternative to conventional sutures in soft-tissue surgery or to conventional sutures
- Used in periodontal surgical procedures including gingivectomy, mucogingival flaps, biopsies, routine extractions and superficial oral ulcerations
- 2ml and 5ml kits include autoclavable trays

#### PeriAcryl Violet

1156173	0.2ml Preloaded applicators	12/pack
2080048	9ml Kit Includes: 3x3 ml bottles, tray, 70 regular pipettes, 20 angled pipettes	kit
1156181	5ml Multi-use Kit Includes: 5ml MDV, 50 pipettes	kit
1156183	2ml Mini Kit Includes: 2ml MDV, 20 pipettes	kit

#### PeriAcryl Clear

1156174	0.2ml Preloaded applicators	12/pack
1156182	5ml Multi-use Kit Includes: 5ml MDV, 50 pipettes	kit
1156184	2ml Mini Kit Includes: 2ml MDV, 20 pipettes	kit



### GLUSTITCH PERIACRYL® 90 TISSUE ADHESIVE HIGH VISCOSITY

- 9 times thicker than PeriAcryl 90 Regular Viscosity
- Developed using feedback from periodontists
- Increased control for precision application and less waste
- Same trusted set time and strength as PeriAcryl 90 Regular Viscosity
- Same user friendly delivery system as PeriAcryl 90 Regular Viscosity
- 5ml and 9ml kits include autoclavable trays

#### PeriAcryl Violet

2080034	5ml HV Multi-use Kit Includes: 5ml MDV, 50 pipettes	kit
2080047	9ml HV Multi-use Kit Includes: 3x3 ml bottles, tray, 70 regular pipettes, 20 angled pipettes	kit



### GLUSTITCH PIPETTES FOR PERIACRYL MULTI-USE KITS

2080051	Straight *	100/bag
---------	------------	---------

\*Pipettes are empty and do not contain product

PeriAcryl® is a registered trademark of GluStitch Inc.



SAVE an additional 3% with scheduled deliveries on marked items. See inside front cover for details.

**NEED PRICES?** Follow the link below, or scan the QR code, to view retail pricing. For account specific pricing, please log into your account on our website.

[acesouthern.com/catalog/regen24/page/27](https://acesouthern.com/catalog/regen24/page/27)







## FIXATION

### TRUFIX FIXATION SYSTEM

#### The All-In-One Bone Fixation and Membrane Stabilization Solution

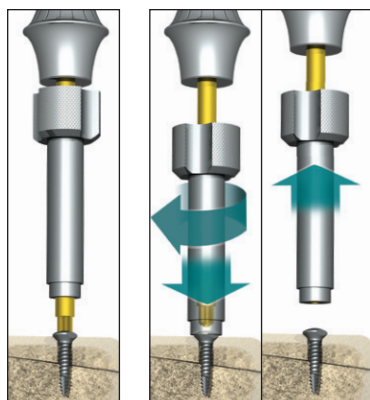
The TruFIX System from ACE Surgical Supply provides you with everything you need for both bone fixation and membrane stabilization. This system incorporates all the necessary components to pick up and drive the ACE TruSCREW and TruTACK. The TruFIX system eliminates the need for multiple systems and unnecessary components, making it user-friendly for your practice.

- True centered patented locking connection
- True axial alignment with pickup each time
- TruSCREW self-drilling screw developed for easy insertion with maximum fixation
- TruSCREW patented removal sleeve for disengaging the screw from the driver without damaging screw head
- TruTACK hexagon driver head and barbed tip to pierce without drilling for simple tack insertion and easy screw-like removal

The TruSCREW, with its aggressive cutting flutes, is an ideal bone screw for the fixation of small bone within the oral and maxillofacial environment. These cutting flutes (in most instances) eliminate the need for any pre-drilling. The patented design of the screw ensures an effortless insertion into all types of bone.

The TruTACK makes the stabilization of membranes quick and trouble-free. ACE's unique tack incorporates a hexagon on its head and threads on its shaft, allowing for easy removal. The truTACK is placed like a tack and removed like a screw, a feature that you will not find in any other system.

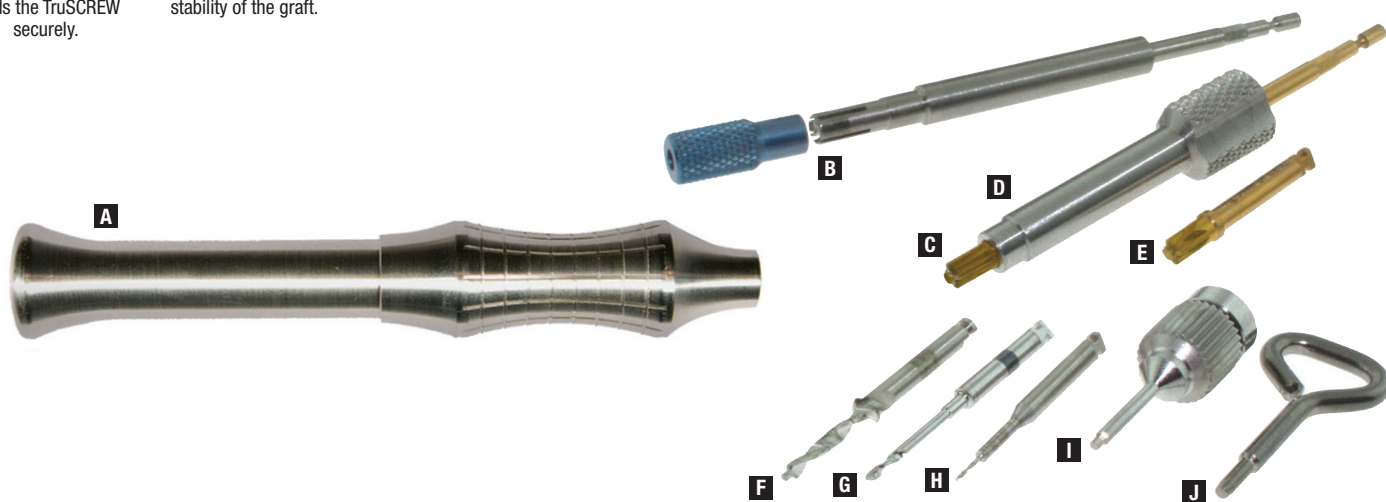
The TruTENT is a refinement of the truSCREW. Its raised collar and wider head is designed to support a titanium mesh during augmentation procedures.



The TruFIX driver's true-centered locking connection holds the TruSCREW securely.

The removal sleeve disengages the driver from the screw without compromising the screw or the stability of the graft.

1101796	truFIX Complete Fixation System	each
<b>System Includes:</b>		
1464523	<b>A</b> truFIX Driver Handle	each
1464535	<b>B</b> truTACK Driver Tip (comes with Tip Cover)	each
1464534	<b>C</b> truSCREW Driver Tip	each
1476299	<b>D</b> truSCREW Driver Removal Sleeve	each
1464533	<b>E</b> truSCREW Driver Tip, Contra-Angle	each
1476166	<b>F</b> 2-Step Countersink Bur, Ø 0.8 and 1.6mm, Contra-Angle	each
1467036	<b>G</b> Ø 1.1mm Pilot Twist Drill, Contra-Angle, 29.8mm Length	each
1466789	<b>H</b> Ø 0.45mm Pilot Bur, Contra-Angle, 27mm Length	each
1469232	<b>I</b> Hand Driver, 0.88mm External Hex	each
1476167	<b>J</b> truSCREW Packaging Removal Tool	each
	truFIX Tray (not sold individually)	

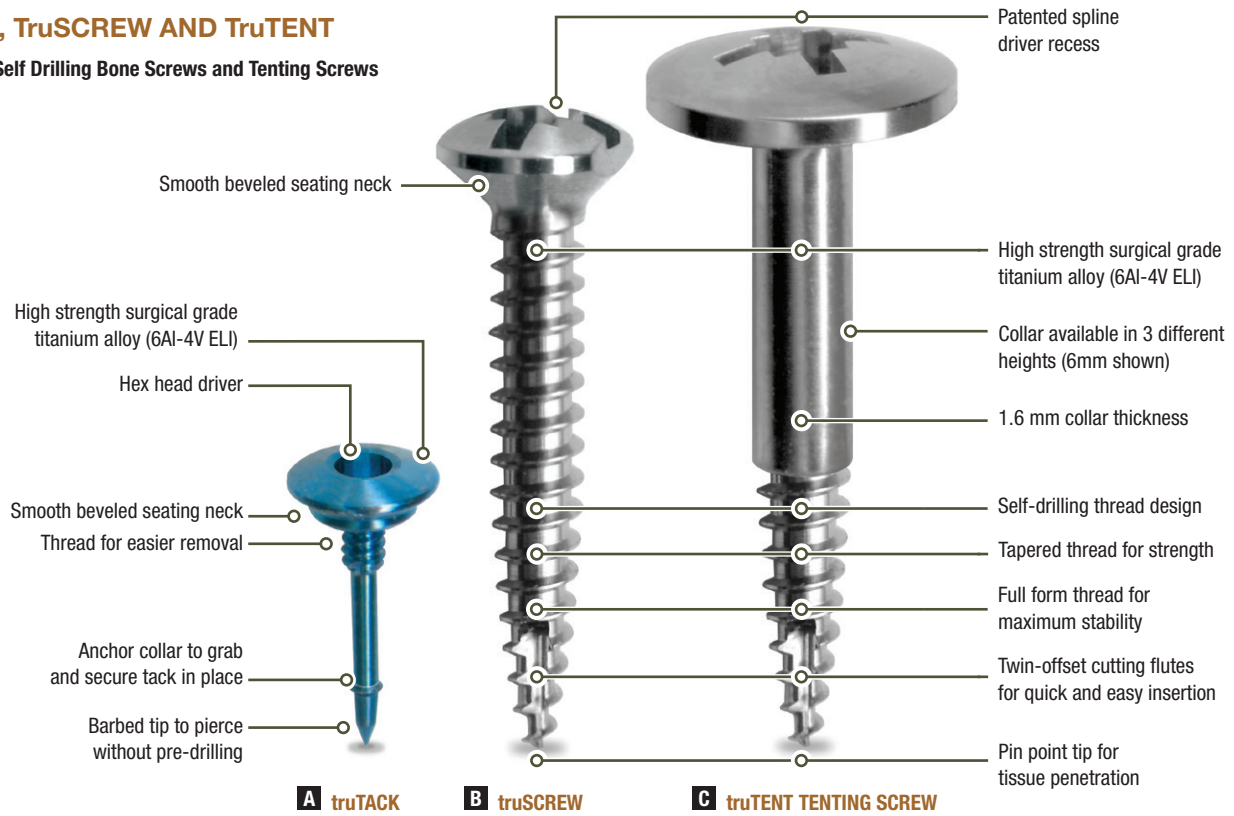




# FIXATION

## TruTACK, TruSCREW AND TruTENT

Bone Tacks, Self Drilling Bone Screws and Tenting Screws



### A truTACK 2.5mm head diameter

- Sterile
- see chart 10/pack

Total Length	0.7mm Thread Ø
3.0mm	1107029
5.0mm	1102392

### B truSCREW 3mm head diameter

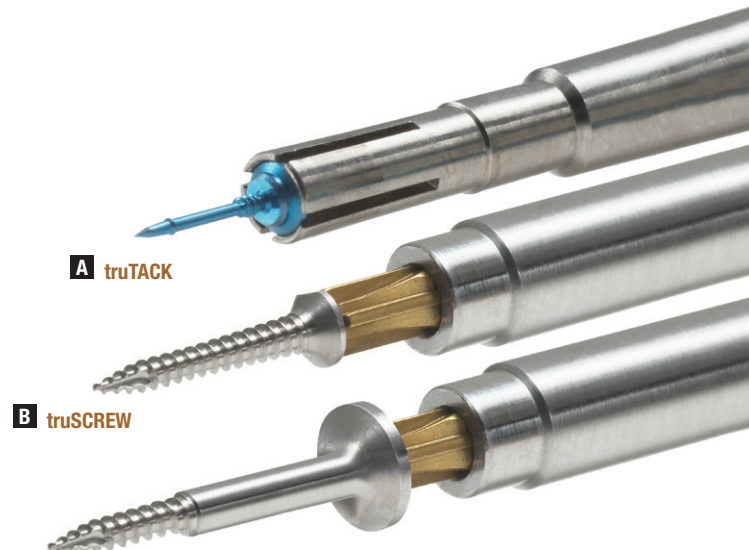
- Sterile
- see chart 5/pack

Total Length	1.2mm Thread Ø	1.5mm Thread Ø	2.0mm Thread Ø
4.5mm	1108879		
6.0mm	1102586	1107821	1467077
7.5mm	1109615	1105111	1467075
9.0mm	1104330	1105979	1467076
10.5mm	1105857	1103433	1467073
12.0mm		1104087	1467074
13.5mm		1108365	1467071
15.0mm		1102598	1467072

### C truTENT 5mm head diameter

- Sterile
- see chart 1/pack

Total Length	Collar Height	1.5mm Thread Ø
10.0mm	4mm	1464486
12.0mm	6mm	1464447
14.0mm	8mm	1467078



### C truTENT TENTING SCREW



SAVE an additional 3% with scheduled deliveries on marked items. See inside front cover for details.



**NEED PRICES?** Follow the link below, or scan the QR code, to view retail pricing. For account specific pricing, please log into your account on our website.

[acesouthern.com/catalog/regen24/page/29](https://acesouthern.com/catalog/regen24/page/29)



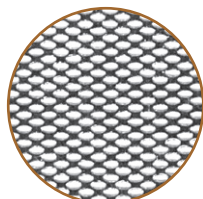


## FIXATION

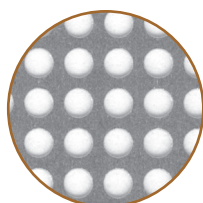
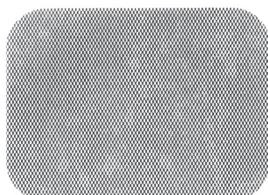
### ACE TITANIUM MICRO MESH

#### Customizable Titanium Mesh for Guided Bone Regeneration

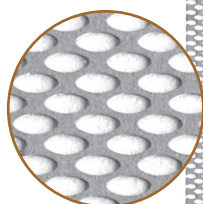
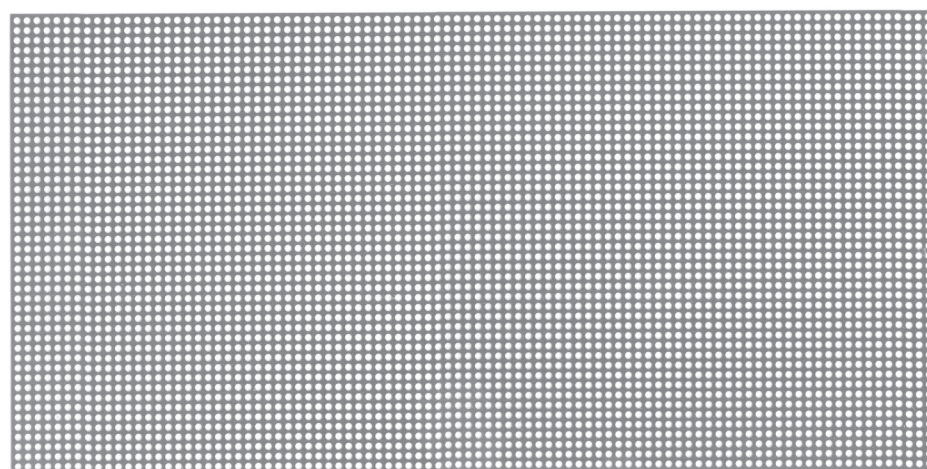
- Manufactured from commercially pure titanium (6Al-4V ELI)
- Perforated • Non-sterile
- Can be secured with ACE TruFIX Self-Drilling bone screws (page 29)
- Trim to size using ACE Wire Cutting Scissors (page 35)
- Mesh images are shown at actual size.
- Circled detail images are enlarged 400%.



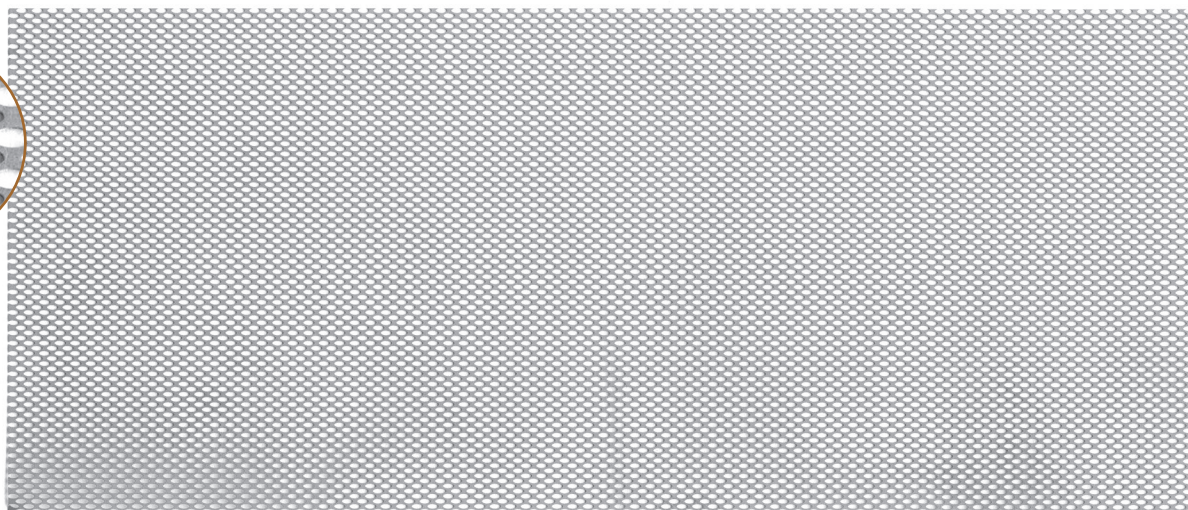
A



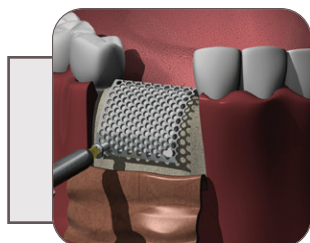
B



C




1150071	A	34 x 25mm	0.1mm thick	each
1150070	B	120 x 60mm	0.1mm thick	each
1464485	C	152 x 66mm	0.2mm thick	each



SEE PAGE 32 FOR THE  
TUTORIAL "COMPLETE  
TITANIUM MESH  
GRAFTING"



SAVE an additional 3% with scheduled deliveries on  
 marked items. See inside front cover for details.

W: [acesouthern.com](http://acesouthern.com) | P: 1.800.624.5926 | M-F 8am - 7pm EST

[acesouthern.com/catalog/regen24/page/30](http://acesouthern.com/catalog/regen24/page/30)



# FIXATION

## ACE TITANIUM TENTING MESH

### Pre-Shaped Titanium Mesh for Guided Bone Regeneration

- **A B** feature a 12 point center locking design, which supports the connection on top of standard 2.7mm External Hexagon Implants and ACE Tenting Screws
- Manufactured from commercially pure titanium (6Al-4V ELI), perforated, non-sterile
- Can be secured with ACE TruFIX self-drilling bone screws (page 29)

1150069	<b>A</b>	7 x 14mm	0.2mm thick	each
1416836	<b>B</b>	13 x 33mm	0.2mm thick	each

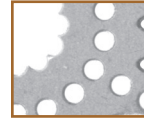
Mesh inset images are enlarged 400%



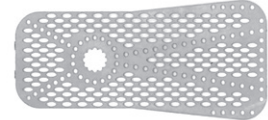
**A**



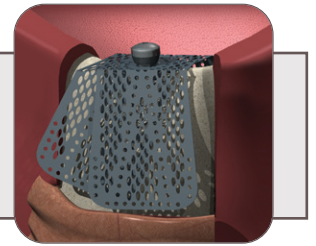
Tenting Mesh  
all shown 100%  
actual size



**B**



SEE PAGE 33 FOR THE TUTORIAL "SECURING AN IMPLANT SITE WITH TITANIUM MICRO-MESH"



## ACE TITANIUM FOIL

- Non-perforated
- Sterile

1467003	76 x 100mm	each
---------	------------	------



## ACE OSSEO-PLATES

ACE offers 5 configurations of Osseo-Plates made from extremely strong yet pliable Grade 3 Commercially Pure Titanium. Each plate is 0.5mm thick and tioidized green. Each hole is countersunk to fit the 1.2mm and 1.5mm ACE TruSCREW Bone Screw.

1467084	<b>C</b>	2 Hole	7mm Long	each
1467085	<b>D</b>	8 Hole	31mm Long	each
1467083	<b>E</b>	7 Hole T-shape	19mm Long	each



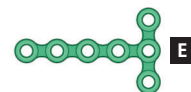
Osseo-Plates Shown Actual Size



**C**



**D**



**E**



REPLENISH

SAVE an additional 3% with scheduled deliveries on marked items. See inside front cover for details.

**NEED PRICES?** Follow the link below, or scan the QR code, to view retail pricing. For account specific pricing, please log into your account on our website.

[acesouthern.com/catalog/regen24/page/31](https://acesouthern.com/catalog/regen24/page/31)



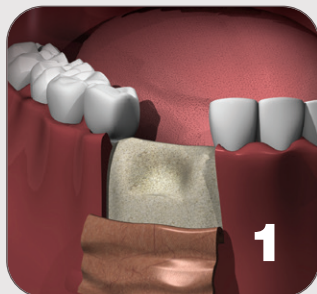




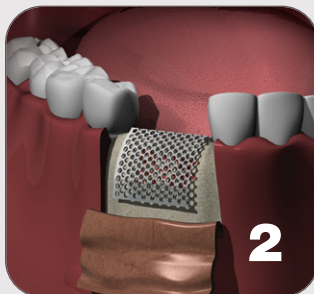
## TUTORIALS

### TUTORIAL: COMPLETE TITANIUM MESH GRAFTING

ACE Resorbable Collagen Membranes, Graft Particulate, Titanium Mesh and TruFIX TruSCREW Bone Screws



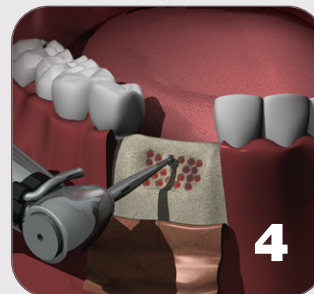
1  
Elevate the periosteal flap and expose the defect area following common surgical procedures.



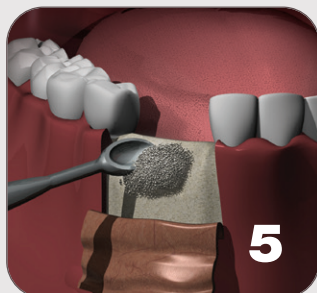
2  
Prior to decorticating the host bone and placing the graft material, mold the titanium mesh to the geometry of the defect.



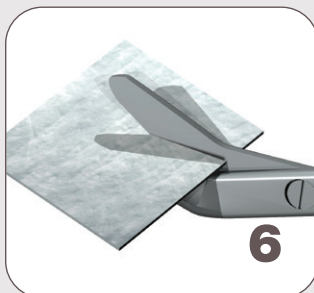
3  
Prepare your preferred particulate grafting material such as alloOss® (allograft) or NuOss® (xenograft).



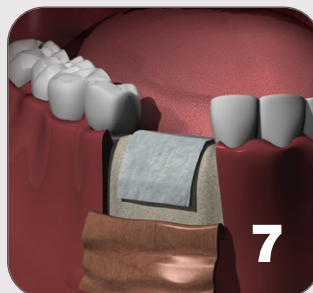
4  
Examine the defect. Using a 1.1mm round bur, decorticate the recipient bone in the area and establish fresh bleeding.



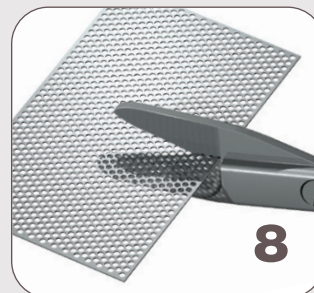
5  
Fill the entire defect with your chosen graft material.



6  
Cut the conFORM or RCM6® Resorbable Collagen Membrane to the defined geometry of the defect.



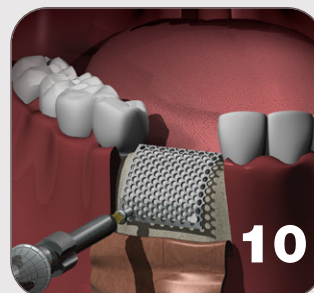
7  
Drape the defect with a preferred resorbable collagen membrane such as RCM6® or conFORM.



8  
Prepare the 0.1mm or 0.2mm thick titanium mesh to the defined geometry of the defect and slightly larger than the RCM6® Resorbable Membrane. Cut with Wire Cutting Scissors (p.35).



9  
Drape the formed titanium mesh over the defect area. Mark the mesh and host bone through the mesh with an ACE step drill (1260097).



10  
Secure the titanium mesh into the recipient bone using appropriate length and diameter TruSCREW Bone Screws (p.29).

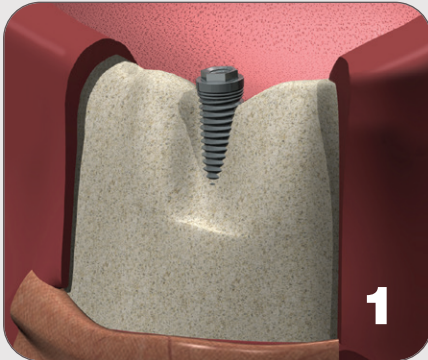
The procedures and techniques presented throughout this catalog are intended to provide basic reference only and should not be substituted for the complete surgical procedure being performed by a licensed practitioner. A complete understanding and execution of the techniques and procedures presented within this catalog are the full responsibility of the

licensed practitioner. These procedures and techniques are NOT TO BE SUBSTITUTED for the practitioner's complete knowledge, education, experience or for any instrumentation or product instruction for use.

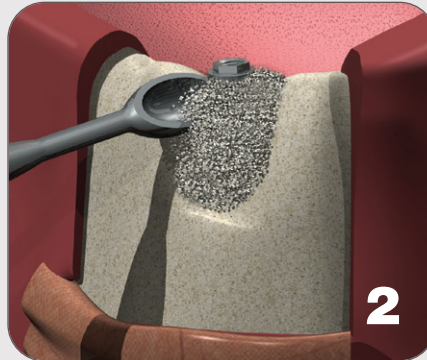


# TUTORIAL: SECURING AN IMPLANT SITE WITH TITANIUM MICRO-MESH

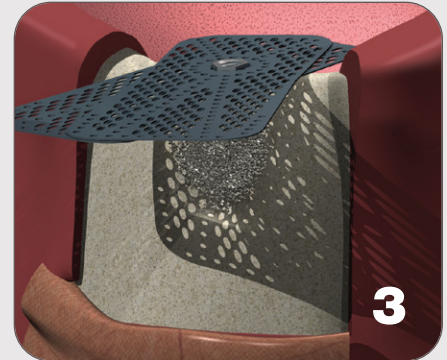
15x30mm Titanium Tenting Mesh with Graft Material, and TruFIX TruSCREW Bone Screws



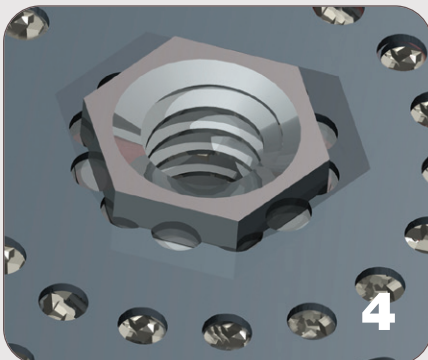
Elevate the periosteal flap from the defect area around the exposed External Hexagon implant.



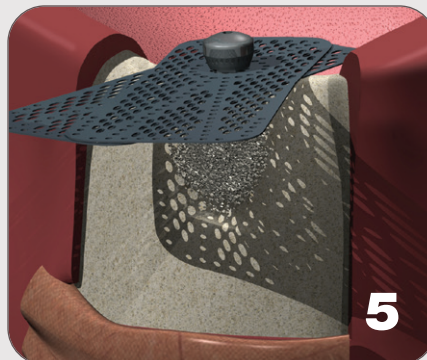
Fill the entire defect with your chosen graft material. Use hydrated alloOss® Particulate, alloOss® Putty, NuOss® Particulate or NuOss® Collagen Block.



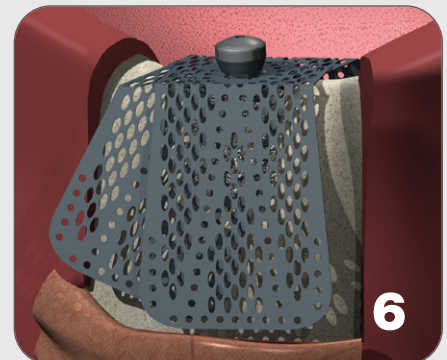
Align the 12-point center locks of the titanium micro-mesh with the top of the 2.7mm external hex implant. If the defect is wider than a single mesh, two Titanium Micro-Mesh (1416836 p.31) can be used (as shown).



The 12-Point center of the Titanium Micro Mesh snaps and locks into place when used over a standard 2.7mm external hex implant (as shown). May be used for tenting procedures over the ACE Tenting Screw (p.29).



Add an implant cover screw or abutment (shown) to hold mesh in place. Don't torque yet to allow adjustments in mesh alignment.



Gently bend mesh, contour to desired ridge profile. Once it has been bent into place, fully torque cover screw or abutment.



Secure the titanium micro mesh into the recipient bone using appropriate length and diameter TruSCREW Bone Screws (p.29).

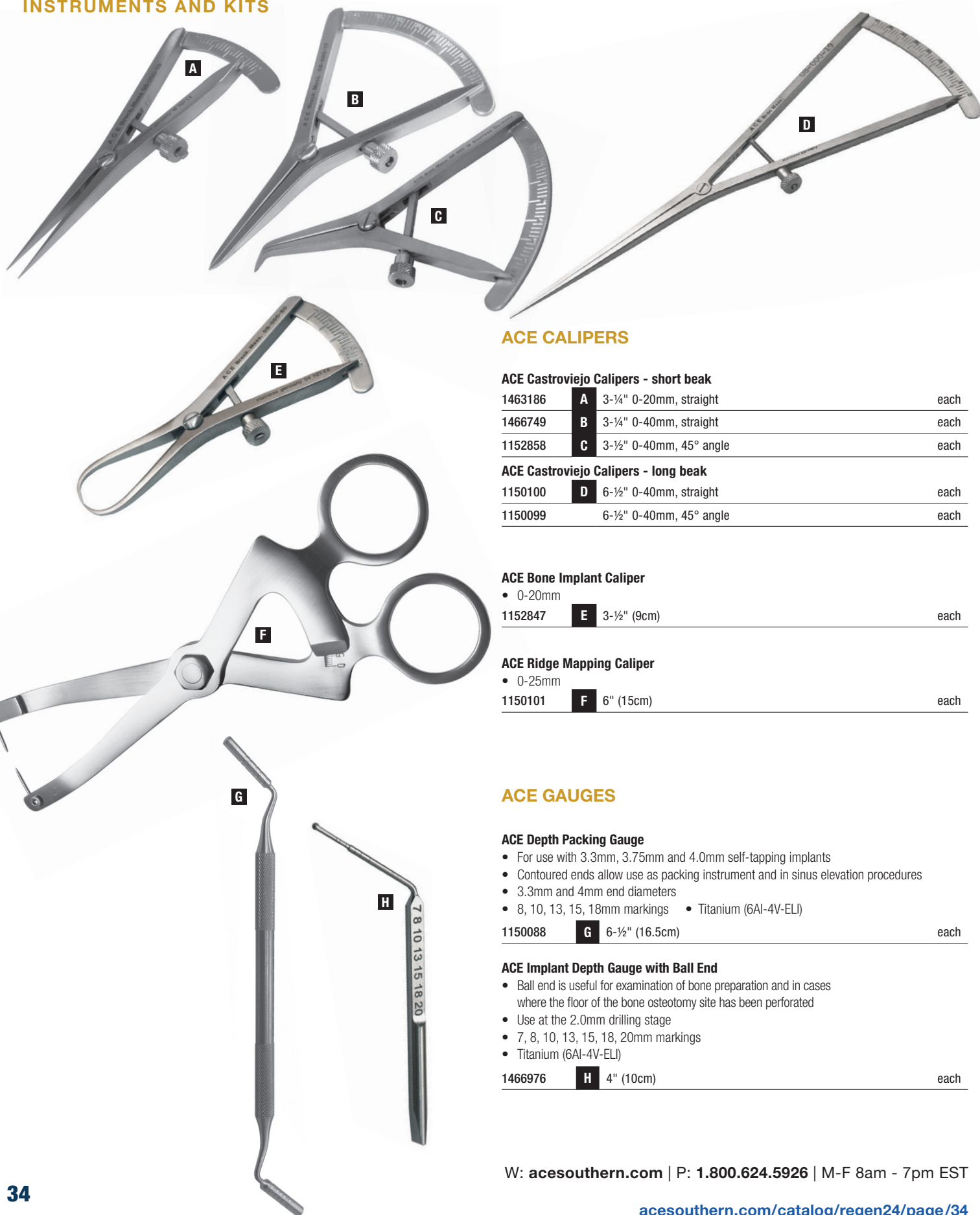
The procedures and techniques presented throughout this catalog are intended to provide basic reference only and should not be substituted for the complete surgical procedure being performed by a licensed practitioner. A complete understanding and execution of the techniques and procedures presented within this catalog are the full responsibility of the

licensed practitioner. These procedures and techniques are NOT TO BE SUBSTITUTED for the practitioner's complete knowledge, education, experience or for any instrumentation or product instruction for use.





## INSTRUMENTS AND KITS



## ACE CALIPERS

## ACE Castroviejo Calipers - short beak

1463186	<b>A</b>	3-¼" 0-20mm, straight	each
1466749	<b>B</b>	3-¼" 0-40mm, straight	each
1152858	<b>C</b>	3-½" 0-40mm, 45° angle	each

## ACE Castroviejo Calipers - long beak

1150100	<b>D</b>	6-½" 0-40mm, straight	each
1150099		6-½" 0-40mm, 45° angle	each

## ACE Bone Implant Caliper

• 0-20mm			
1152847	<b>E</b>	3-½" (9cm)	each

## ACE Ridge Mapping Caliper

• 0-25mm			
1150101	<b>F</b>	6" (15cm)	each

## ACE GAUGES

## ACE Depth Packing Gauge

- For use with 3.3mm, 3.75mm and 4.0mm self-tapping implants
- Contoured ends allow use as packing instrument and in sinus elevation procedures
- 3.3mm and 4mm end diameters
- 8, 10, 13, 15, 18mm markings • Titanium (6Al-4V-ELI)

1150088	<b>G</b>	6-½" (16.5cm)	each
---------	----------	---------------	------

## ACE Implant Depth Gauge with Ball End

- Ball end is useful for examination of bone preparation and in cases where the floor of the bone osteotomy site has been perforated
- Use at the 2.0mm drilling stage
- 7, 8, 10, 13, 15, 18, 20mm markings
- Titanium (6Al-4V-ELI)

1466976	<b>H</b>	4" (10cm)	each
---------	----------	-----------	------

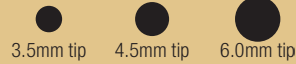


## INSTRUMENTS AND KITS

## ACE GRAFT DELIVERY SYRINGES

- With funnels
- Stainless steel

1463421	3.5mm, curved	each
1463460	4.5mm, curved	each
1467007	6.0mm, curved	each

Syringe openings,  
available sizes


## ACE STERILE DISPOSABLE SYRINGES

- Carries material to surgical site
- Single use
- Can be used for delivery of any material to surgical site

1367126	Sterile, 1cc capacity	10/pack
---------	-----------------------	---------

## ACE WIRE CUTTERS/SCISSORS

## ACE WCPU Wire Cutter

1466836	<b>A</b>	5" (13cm) TC (Max 0.5)	each
---------	----------	------------------------	------

## ACE Smith Wire Cutting Scissors

- 1 blade is serrated

1466851		6" (15cm)	each
1466766	<b>B</b>	7" (18cm) TC	each

## ACE GRAFTING INSTRUMENTS

## ACE Implant Curette

- Round Cups
- Ti

1150073	<b>C</b>	5 x 10mm & 6 x 20mm, 5-1/2" (14cm)	each
---------	----------	------------------------------------	------

## ACE Lucas Bone Curette

- Serrated
- Double ended

1466808	<b>D</b>	3.5mm, 5 teeth, 6-1/2" (17cm)	each
1463164		4.5mm, 7 teeth, 6-1/2" (17cm)	each

## ACE Buser-type Elevator - Membrane Placement Instrument

1463420	<b>E</b>	7" (18cm)	each
---------	----------	-----------	------

## ACE Bone Graft Holding Forceps

1150077		8" (20cm)	each
1150078	<b>F</b>	6" (15cm)	each

TC = Tungsten Carbide

Ti = Titanium

DE = Double ended



ACE Bone Graft Holding Forceps are designed with drill relief tips for easier drilling while securely holding the graft.



SAVE an additional 3% with scheduled deliveries on marked items. See inside front cover for details.

**NEED PRICES?** Follow the link below, or scan the QR code, to view retail pricing. For account specific pricing, please log into your account on our website.

[acesouthern.com/catalog/regen24/page/35](https://acesouthern.com/catalog/regen24/page/35)







## INSTRUMENTS AND KITS



### ACE SINUS LIFT KIT

#### ACE Sinus Lift Kit

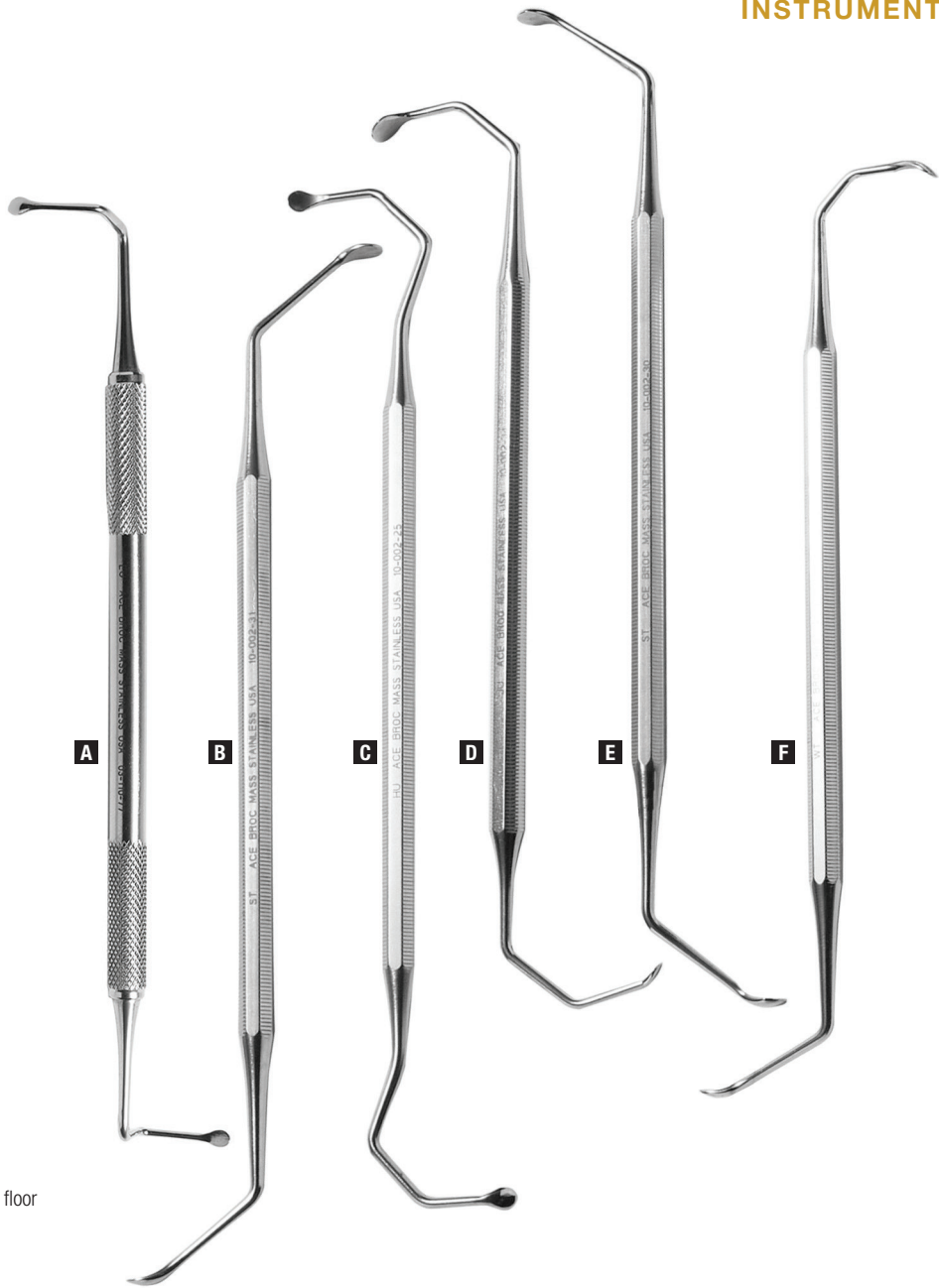
1150080	<b>A</b>	Sinus Lift Kit with Tray	each
---------	----------	--------------------------	------

#### Kit Includes:

1150091	<b>B</b>	Autoclavable Tray	each
1150081	<b>C</b>	Shepherd Sinus Lift Retractor	7" (18cm) each
1150082	<b>D</b>	Freer Periosteal Elevator, strong curve	7-1/2" (19cm) each
1150084	<b>E</b>	#3 Clepper Tatum Antralplasty Elevator, DE	6-1/2" (16.5cm) each
1150085	<b>F</b>	#1 Sinus Lift Curette, standard bend, DE, 3mm/5mm	7-1/2" (19cm) each
1150086	<b>G</b>	#2 Sinus Lift Curette, severe bend, DE, 3mm/5mm	6-1/2" (16.5cm) each
1150088	<b>H</b>	Depth/Packing Gauge, DE, Titanium, markings at 8-10-13-15-18mm, 3.3/4mm ends	6-1/2" (16.5cm) each



INSTRUMENTS AND KITS



ACE ELEVATOR KIT

Antralplasty Elevator Kit for Sinus and Socket Lift Procedures

- Designed for exploring and walking antral floor in displaced root tip removal
- Instruments have dulled edges to prevent tearing of the membrane

ACE Antralplasty Elevator Kit

1466763	Antralplasty Elevator Kit	each
---------	---------------------------	------

Kit Includes:

1150084	<b>A</b>	#3 Clepper Tatum Antralplasty Elevator, DE	6-1/2" (16.5cm)	each
1466879	<b>B</b>	#2 Clepper Tatum Antralplasty Elevator, DE	6-1/2" (16.5cm)	each
1466812	<b>C</b>	#1 Antral Curette, DE	6-1/2" (16.5cm)	each
1466877	<b>D</b>	#3 Antral Curette, DE	5-3/4" (14.5cm)	each
1476168	<b>E</b>	#1 Clepper Tatum Antralplasty Elevator, DE	6-1/2" (16.5cm)	each
1466880	<b>F</b>	#2 Antral Curette, DE	6" (15cm)	each

**NEED PRICES?** Follow the link below, or scan the QR code, to view retail pricing.  
For account specific pricing, please log into your account on our website.

[acesouthern.com/catalog/regen24/page/37](https://acesouthern.com/catalog/regen24/page/37)



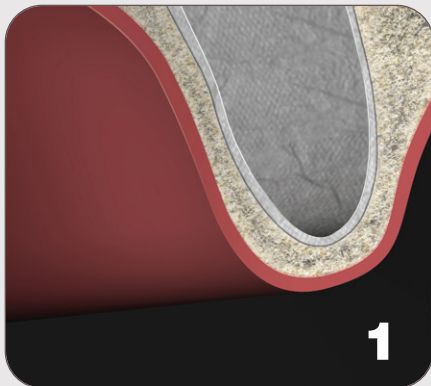




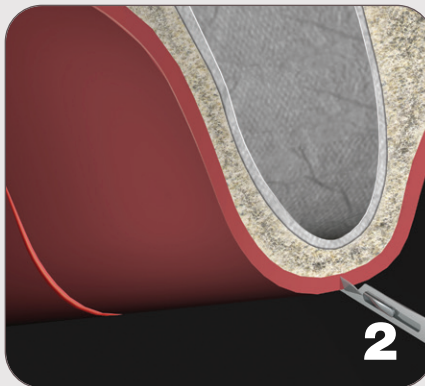
## TUTORIALS

## TUTORIAL: LATERAL SINUS AUGMENTATION PROCEDURE

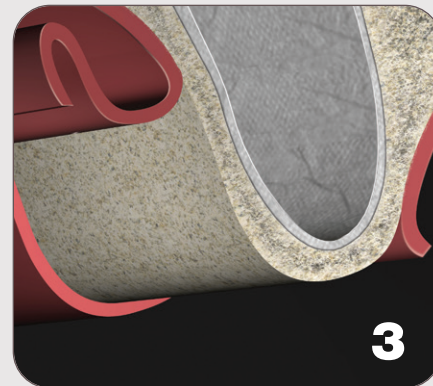
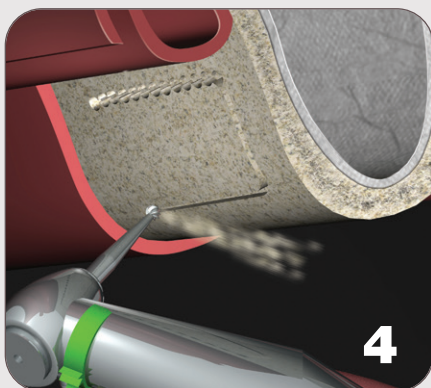
An excellent way to increase vertical dimension in the posterior maxilla.

**1**

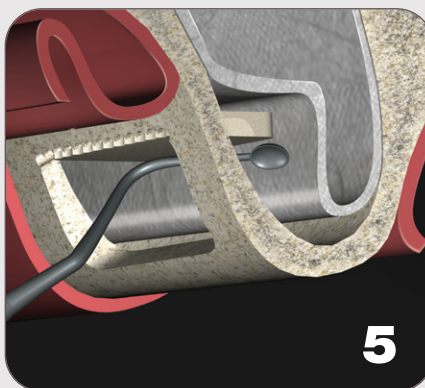
Pre-surgical radiographic assessment is crucial for success. A panoramic radiograph and a CT scan allows for cross-sectional evaluation and determination of any pathology within the sinus. The anatomy is also visualized in the CT Scan.

**2**

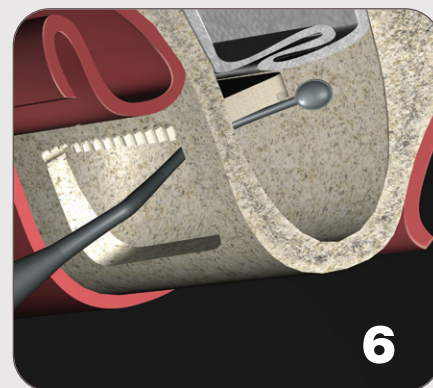
Initial incisions and flap reflection allows for complete access to the lateral wall of the sinus. When teeth are present, intercellular incisions are made and a vertical release incision is performed.

**3****4**

Using paintbrush like strokes, a round bur is utilized to prepare the lateral window opening.

**5**

Using the ACE Sinus Lift Kit (1150080 p.36), careful membrane reflection is performed with the instrumentation provided within these kits.

**6**

Care is taken to avoid perforation of the membrane and to make sure that reflection is performed along the medial wall. Sufficient reflection should be performed to allow for a 15mm implant fixture.

**7**

**SURGEON'S CHOICE:**  
EXPANDABLE COLLAGEN

NuOss® XC Sinus Self Expanding Bone Graft Composite can be used to place immediately into the sinus cavity. NuOss XC Sinus will begin expanding immediately after coming into contact with blood or sterile saline, filling the sinus cavity.

**8**

**SURGEON'S CHOICE:**  
BONE GRANULES

NuOss or alloOss® particulate bone graft can be prepared and placed into the site using a graft delivery spoon or loaded into a graft delivery syringe.

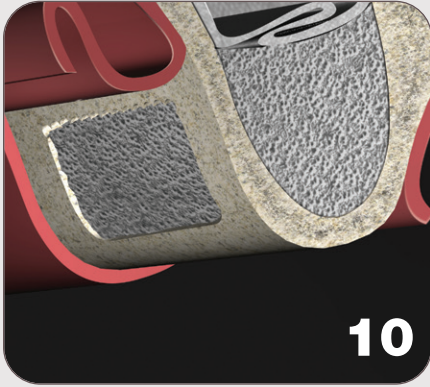
**9**

**SURGEON'S CHOICE:**  
PRE-FILLED SYRINGE

NuOss DS saves time by delivering xenograft particulate through a pre-loaded delivery syringe. Simply follow the hydration steps required for NuOss DS and deliver directly to the sinus cavity.

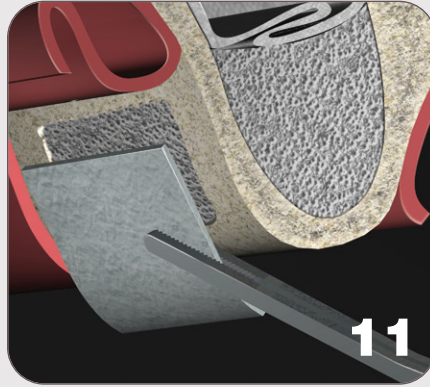


TUTORIALS



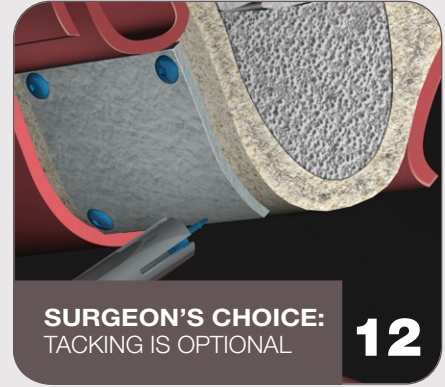
**10**

The bone graft is placed along the medial aspect of the sinus working your way to the lateral wall, completely filling the sinus augmentation cavity.



**11**

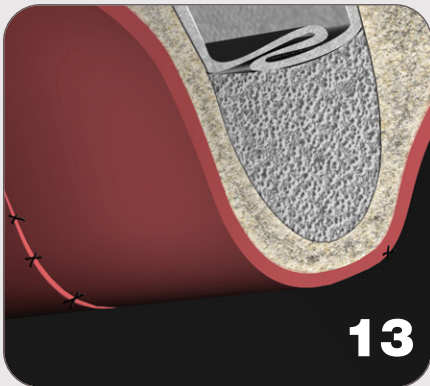
A membrane is then placed over the lateral wall.



**SURGEON'S CHOICE:**  
TACKING IS OPTIONAL

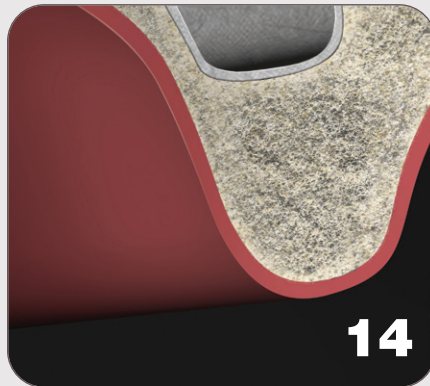
**12**

TruTACKS from the truFIX kit (p.28-29) can be used to fixate the resorbable collagen membrane in place before returning the flap for final suturing.



**13**

Once the membrane is securely in place, the site is then sutured.



**14**

After allowing 6-9 months of healing, the host bone is now ready for implants.



**15**

Use standard implant surgical placement protocols.

The procedures and techniques presented throughout this catalog are intended to provide basic reference only and should not be substituted for the complete surgical procedure being performed by a licensed practitioner. A

complete understanding and execution of the techniques and procedures presented within this catalog are the full responsibility of the licensed practitioner. These procedures and techniques are NOT TO BE SUBSTITUTED

for the practitioner's complete knowledge, education, experience or for any instrumentation or product instruction for use.





## INSTRUMENTS AND KITS

## ACE SINUS LIFT OSTEOTOME KIT

- Concave tip, sharply honed cutting surface
- Concave tip can be used to carry and place bone grafting material into site
- All osteotomes are 6", 15cm Long



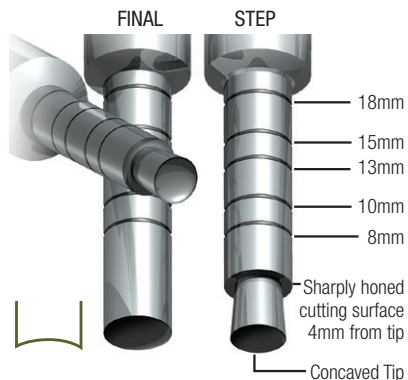
## OSTEOTOME SIZE CHART

Osteotome	Implant OD
2.8mm	3.25-3.5mm
3.3mm	3.75-4.0mm
4.35mm	4.75mm
5.0mm	5.75mm

OD = Outside Diameter

See page 43 for a tutorial

## CONCAVE TIP DETAIL



## ACE Sinus Lift Osteotome Kit - (Concave Tips)

1150149	Set of 11 Osteotomes with Tray	kit
---------	--------------------------------	-----

## Sinus Lift Osteotome Kit Includes:

1151573	Step - 1.6mm/2.0mm	each
1151574	Step - 2.0mm/2.8mm	each
1151575	Step - 2.8mm/3.3mm	each
1151576	Step - 3.3mm/4.0mm	each
1151577	Step - 4.0mm/4.35mm	each
1476169	Step - 4.35mm/5.0mm	each
1151578	Final - 2.8mm	each
1151579	Final - 3.3mm	each
1151580	Final - 4.0mm	each
1151581	Final - 4.35mm	each
1151582	Final - 5.0mm	each

Autoclavable Tray (not sold individually)



## INSTRUMENTS AND KITS

## ACE SITE DILATOR KIT

- Convex tip compresses bone, limiting the amount of bone that must be removed from the site
- All implant site dilators are 6", 15cm long



## OSTEOTOME SIZE CHART

Osteotome	Implant OD
2.8mm	3.25-3.5mm
3.3mm	3.75-4.0mm
4.35mm	4.75mm
5.0mm	5.75mm

OD = Outside Diameter

See page 43 for a tutorial

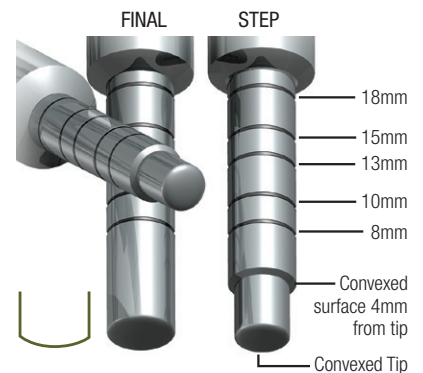
## ACE Implant Site Dilator Osteotome Kit - (Convex Tips)

1150150 Set of 11 Osteotomes with Tray kit

## Implant Site Dilating Osteotome Kit Includes:

1151583	Step - 1.6mm/2.0mm	each
1151584	Step - 2.0mm/2.8mm	each
1151585	Step - 2.8mm/3.3mm	each
1151586	Step - 3.3mm/4.0mm	each
1151587	Step - 4.0mm/4.35mm	each
1151588	Step - 4.35mm/5.0mm	each
1151589	Final - 2.8mm	each
1151590	Final - 3.3mm	each
1151591	Final - 4.0mm	each
1151592	Final - 4.35mm	each
1151593	Final - 5.0mm	each
Autoclavable Tray (not sold individually)		

## CONVEX TIP DETAIL



**NEED PRICES?** Follow the link below, or scan the QR code, to view retail pricing.  
For account specific pricing, please log into your account on our website.

[acesouthern.com/catalog/regen24/page/41](https://acesouthern.com/catalog/regen24/page/41)



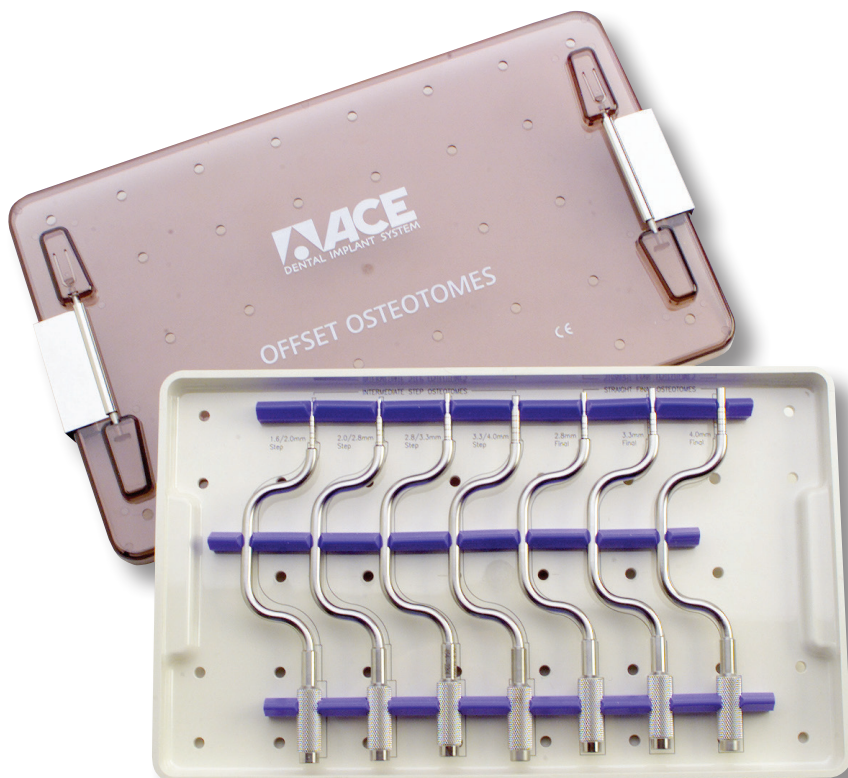




## INSTRUMENTS AND KITS

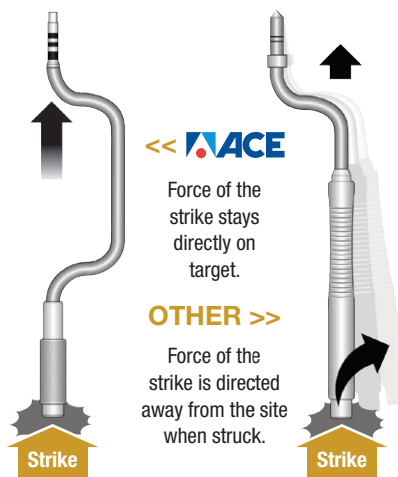
### ACE OFFSET OSTEOTOME KIT

- Offset advantage: force of the strike stays directly on target
- Concave tip, sharply honed cutting surface
- Concave tip can be used to carry and place bone grafting material into site
- All osteotomes are 6", 15cm Long



### THE ADVANTAGE OF ACE OFFSET OSTEOTOMES

#### ACE Osteotomes vs Other Offset Osteotomes



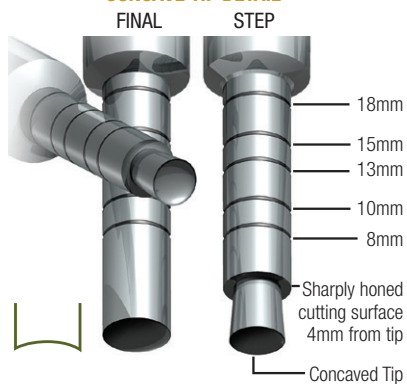
### OSTEOTOME SIZE CHART

Osteotome	Implant OD
2.8mm	3.25-3.5mm
3.3mm	3.75-4.0mm
4.35mm	4.75mm
5.0mm	5.75mm

OD = Outside Diameter

See page 43 for a tutorial

#### CONCAVE TIP DETAIL



#### ACE Offset Osteotome Kit - (Concave Tips)

1150148 Set of 7 Osteotomes with Tray

kit

#### Offset Osteotome Kit Includes:

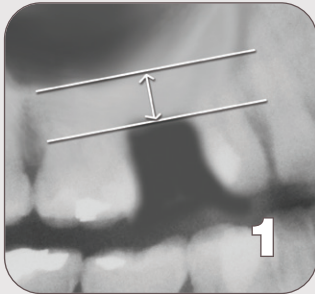
- Step - 1.6mm/2.0mm
- Step - 2.0mm/2.8mm
- Step - 2.8mm/3.3mm
- Step - 3.3mm/4.0mm
- Final - 2.8mm
- Final - 3.3mm
- Final - 4.0mm
- Autoclavable Tray

Looking For Individual Osteotomes? Call Us at 800-624-5926.

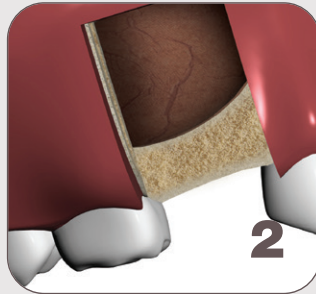


**TUTORIAL: SINUS LIFT SITE PREPARATION FOR IMPLANT PLACEMENT**

An alternative method for preparing a Ø4.3mm – Ø4.8mm implant site



A minimum of 5-6mm of bone is needed between the alveolar crest and the maxillary sinus floor.



Initial incisions and flap reflection is made to allow complete access to the implant site.



Prepare the implant site by inserting a Ø1.6mm/2.0mm Step Sinus Lift Osteotome until it reaches the sinus floor. Continue each step, enlarging the osteotomy to the chosen implant diameter.



Insert the next Ø2.0mm/2.8mm Step Sinus Lift Osteotome until it reaches the sinus floor. Continue each step, enlarging the osteotomy to the chosen implant diameter.



Insert the Ø2.8mm/3.3mm Step Sinus Lift Osteotome until it reaches the sinus floor. Continue each step, enlarging the osteotomy to the chosen implant diameter.



Insert the Ø3.3mm/4.0mm Step Sinus Lift Osteotome until it reaches the sinus floor. Continue each step, enlarging the osteotomy to the chosen implant diameter.



Secure the final Ø4.0mm Straight Sinus Lift Osteotome using tight finger control in order to limit vertical movement. Insert into the implant site until it reaches the sinus floor. Tap lightly once to crack the sinus floor elevating the sinus floor and Schneiderian membrane in "Trap Door Fashion."



All autogenous bone collected using the unique multiple cutting surfaces of the pilot osteotomes will be pushed into the space created between the floor and the membrane. The site is now prepared for inserting a Ø4.3mm – Ø4.8mm Dental implant. For other sized implants, fewer or additional steps and final osteotomes are used.



As required, autogenous bone or bone graft mix can be added to the osteotomy. The ACE Autograft (see page 52) can be used to obtain an autogenous bone graft mix.



Placement of the appropriate length and diameter Implant will utilize the newly formed bone depth and push the sinus membrane lifting the sinus floor and membrane into the sinus cavity.

OSTEOTOME SIZE CHART	Select Implant Diameter, Use Each Osteotome with ●				
	Ø3.25mm- Ø3.6mm	Ø3.7mm- Ø4.2mm	Ø4.3mm- Ø4.8mm	Ø4.9mm- Ø5.3mm	Ø5.4mm- Ø5.75mm
1.6 / 2.0 mm STEP	●	●	●	●	●
2.0 / 2.8 mm STEP	●	●	●	●	●
2.8 / 3.3 mm STEP		●	●	●	●
3.3 / 4.0 mm STEP			●	●	●
4.0 / 4.35 mm STEP				●	●
4.35 / 5.0 mm STEP					●
FINAL OSTEOTOME	● 2.8mm	● 3.3mm	● 4.0mm	● 4.35mm	● 5.0mm

**For Larger Implants:** For placement of larger implants (3.75mm, 4.0mm, 4.75mm) widen the diameter of the osteotomy by progressively increasing the osteotomes diameter until the desired opening is achieved. See above for osteotome-to-implant size chart.

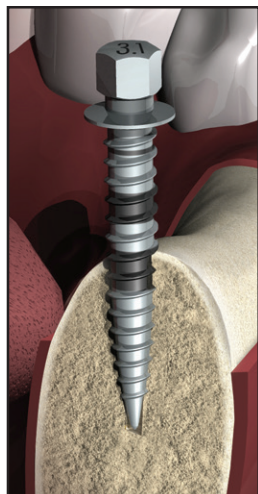
The procedures and techniques presented throughout this catalog are intended to provide basic reference only and should not be substituted for the complete surgical procedure being performed by a licensed practitioner. A complete understanding and execution of the techniques and procedures presented within

this catalog are the full responsibility of the licensed practitioner. These procedures and techniques are NOT TO BE SUBSTITUTED for the practitioner's complete knowledge, education, experience or for any instrumentation or product instruction for use.





## INSTRUMENTS AND KITS



### ACE RIDGE EXPANDING KIT

#### Simplifying the Treatment of Atrophic Maxillary or Mandibular Ridges

- Discover a safe, controllable way to widen a thin questionable ridge to one capable of accommodating an implant up to 4.5mm without compromising cortical bone.
- The slowly revolving dilators of increasing diameter gently widen the bone in a risk free procedure to the exact depth and direction of the final implant.
- After each dilator is inserted, allow 30-60 seconds before removing it. This allows time for the elasticity of the bone to respond.
- Laser markings provide accurate guidance for the placement of implants into the newly expanded ridge.



#### ACE Ridge Expanding Kit

1466725 Set of 4 with surgical kit

kit

#### Ridge Expanding Kit Includes:

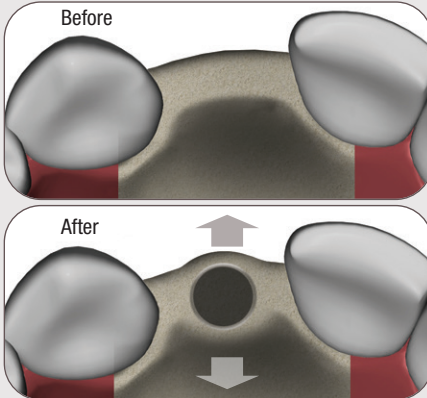
- 2.5mm Expander
- 3.1mm Expander
- 3.6mm Expander
- 4.3mm Expander
- Connection driver tool (Hex), for CA handpiece
- Universal ratchet
- Driver extender (Hex)
- Square titanium bowl
- Autoclavable tray

Looking For Individual Expanders? Call Us at 800-624-5926.

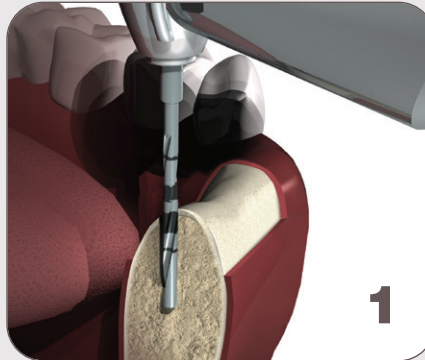


**TUTORIAL: RIDGE EXPANDING PROCEDURE**

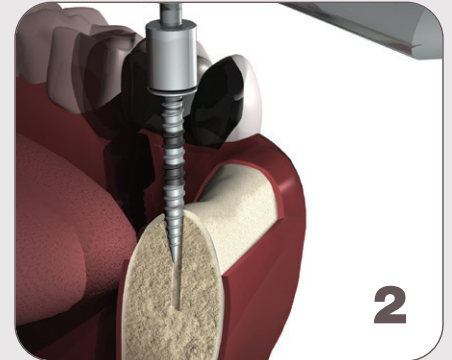
Simplifying the treatment of atrophic maxillary or mandibular ridges.



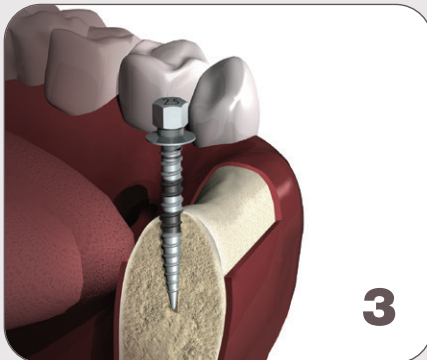
This technique takes advantage of the innate elasticity and flexibility of bone. Through a series of progressively wider expanders, SLOW, STEADY pressure is created as the expander advances the alveolar bone without raising a complete flap, allowing an implant to be placed with minimal ridge splitting.



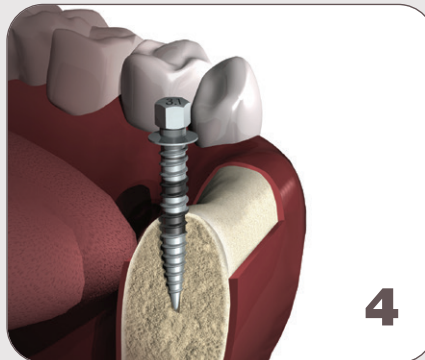
Prepare the osteotomy for ridge expansion using a Pilot Step Drill. Drill an initial osteotomy at the location of the expansion and final implant, drill to implant depth.



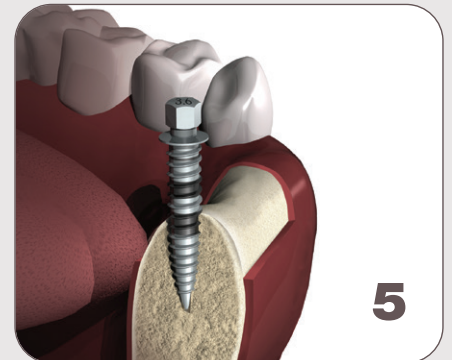
Use either a contra-angle or hand driver tool to drive the expanders. Using the 2.5mm expander, tap into the prepared pilot hole to the appropriate implant length. Drilling speed should be 25 rpm.



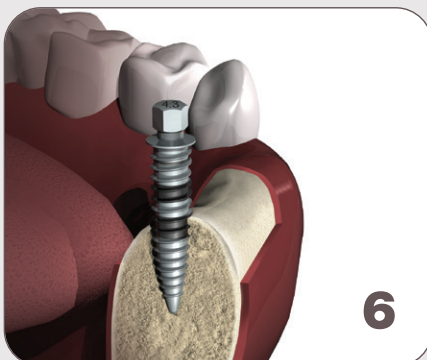
Using the laser markings provided, insert to match the implant's length.



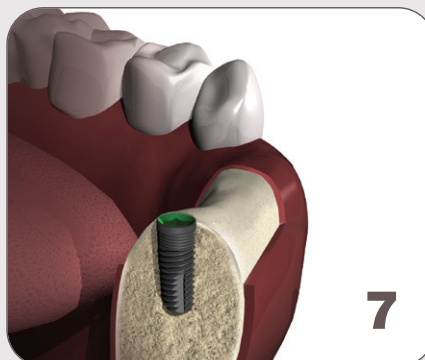
Use the 3.1mm expander next and increase the size of the osteotomy. Drive the expander to appropriate implant length. This is your final expander when placing a 3.75mm implant. Drilling speed should be 25 rpm.



Use the 3.6mm as the final expander when placing a 4.1mm implant. Drive the expander to appropriate implant length. Drilling speed should be 25 rpm.



If placing a 4.75-5.0mm implant, continue with the 4.3mm bone expander. Drive the expander to appropriate implant length. Drilling speed should be 25 rpm.



Insert the appropriate size implant into the osteotomy, which now has a compressed bony interface. Seat the desired implant and close soft tissue.

The procedures and techniques presented throughout this catalog are intended to provide basic reference only and should not be substituted for the complete surgical procedure being performed by a licensed practitioner. A complete understanding and execution of the techniques and procedures presented within this catalog are the full responsibility of the licensed practitioner. These procedures and techniques are NOT TO BE SUBSTITUTED for the practitioner's complete knowledge, education, experience or for any instrumentation or product instruction for use.





## INSTRUMENTS AND KITS



### ACE RIDGE EXPANDING CHISEL KIT

- All Ridge Expanding Chisels are 6", 15cm
- Markings at 8, 10, 13, 15 and 18mm



#### ACE Ridge Expanding Chisel Kit

Set of 4 with tray and handle

1469995 Chisel kit

kit

#### Chisel Kit Includes:

- 3.0 mm Ridge Chisel
- 4.0 mm Ridge Chisel
- 5.0 mm Ridge Chisel
- 9.5 mm Ridge Chisel
- Chisel Handle (Uses 1.25mm Hex Driver)
- Autoclavable Tray

Looking For Individual Chisels? Call Us at 800-624-5926.

## TUTORIAL: SINGLE STAGE RIDGE SPLIT



Thin anterior maxillary ridge requiring expansion. An initial incision and flap reflection is made to allow access to the ridge.



Small diameter pilot drill is introduced to mark implant site.



(Option for Soft Bone) An initial crest osteotomy can be started with an ACE Mini Blade (1466740 p.49).



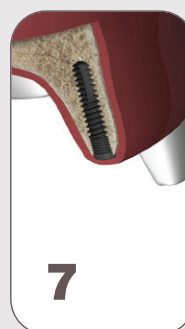
Vertical osteotomy cuts performed with Ridge Expanding Chisel through the buccal cortex in an oblique fashion followed by horizontal osteotomy at ridge crest.



ACE Site Dilator (p.41) can be used to prepare the expanded osteotomy for implant placement.



Implant osteotomy site is completed using chosen implant protocols. Implant in place; labial ridge preserved.



Reference Article: Palti A. Ridge Splitting and Implant Techniques for the Anterior Maxilla. Dental Implantology Update 2003; Volume 14, Number 4.

The procedures and techniques presented throughout this catalog are intended to provide basic reference only and should not be substituted for the complete surgical procedure being performed by a licensed practitioner. A complete understanding and execution of the techniques and procedures

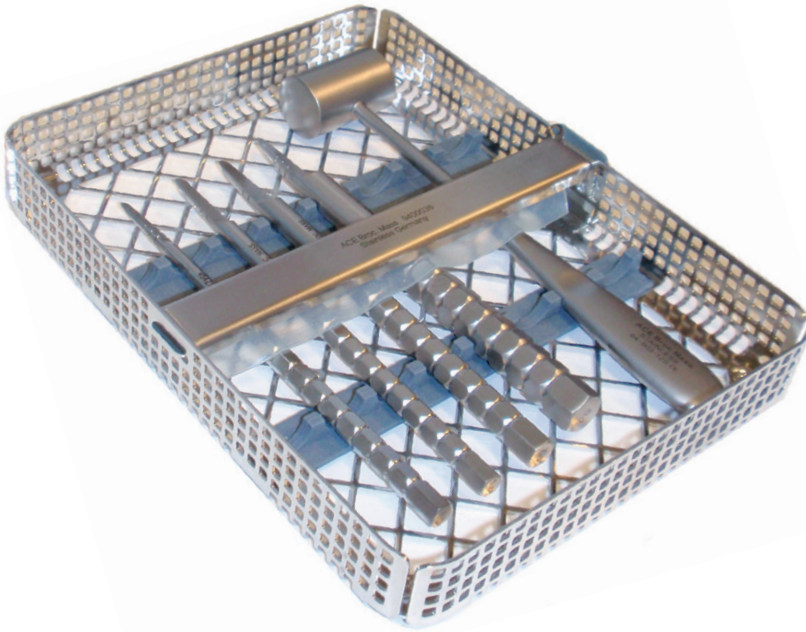
presented within this catalog are the full responsibility of the licensed practitioner. These procedures and techniques are NOT TO BE SUBSTITUTED for the practitioner's complete knowledge, education, experience or for any instrument or product instruction for use.



# INSTRUMENTS AND KITS

## ACE BONE SPREADER OSTEOTOME KIT

- Single end handle can be tapped with a mallet
- Markings at 13mm, 16mm and 19mm
- D-contoured tips to avoid fracturing weaker boney wall
- Instruments and tray are Stainless Steel



### ACE Bone Spreader Osteotome Kit

Set of 4 with mallet and tray

1431421 Bone Spreader Osteotome Kit

kit

### Spreader Osteotome Kit Includes:

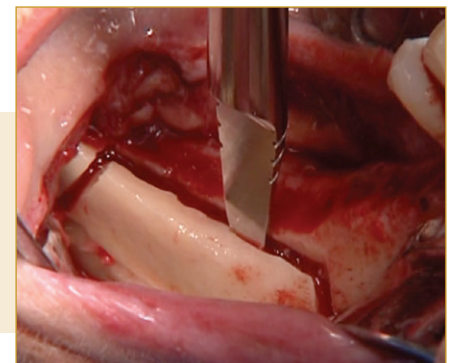
- 4.3mm 27mm scoop
- 5.45mm 26mm scoop
- 7.5mm 26mm scoop
- 10.0mm 27mm scoop
- Surgical mallet, 6-½" (16.5cm)
- Instrument tray, 175 x 140 x 24mm

Looking For Individual Spreaders? Call Us at 800-624-5926.

### Especially designed for taking Chin and Ramus monocortical block grafts.

In Use: Here the Bone Spreader Osteotome is in place, separating the block graft from the ramus on the mandible. The site was prepared and the crest burnished. The crest is then perforated to outline the graft using a .75mm round bur. The outline should be 4-5mm medial from the buccal plate. The length of the graft is determined using a caliper.

A 702L bur is used to connect the perforations to the length of the graft. Vertical anterior and posterior cuts are made with the 702L bur 10-12mm in length. At the vertical depth, the buccal plate is scored using a #8 round bur. The block graft is out-fractured using the bone spreader osteotome.



**NEED PRICES?** Follow the link below, or scan the QR code, to view retail pricing.  
For account specific pricing, please log into your account on our website.

[acesouthern.com/catalog/regen24/page/47](https://acesouthern.com/catalog/regen24/page/47)







## INSTRUMENTS AND KITS

### ACE PERIOTOME HANDLE & BLADES KIT

- Periotome is used to remove ligament attachment from the root of the tooth and the alveolar housing
- Single end handle can be tapped with a mallet or used with hand pressure
- Includes 6-Blade Storage Holder: stands up for easy access during procedures and folds flat for sterilization and storage

#### ACE Periotome Kit

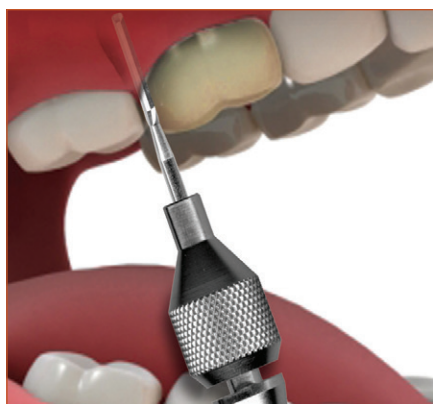
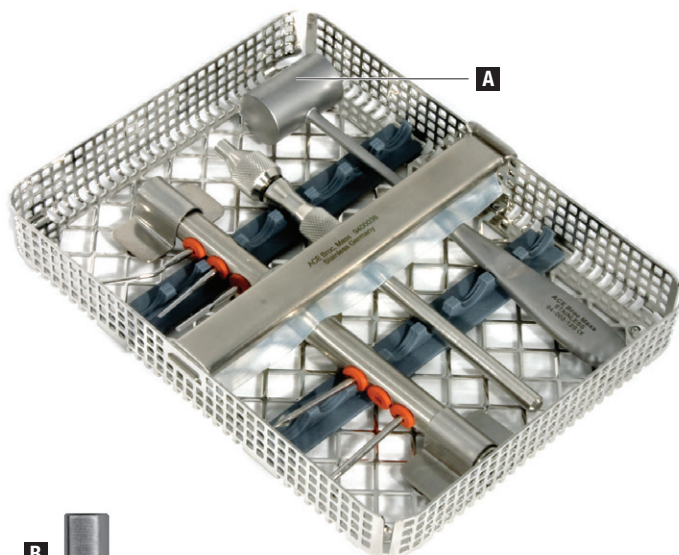
1466810 Periotome Kit kit

#### Periotome Kit Includes: (available separately)

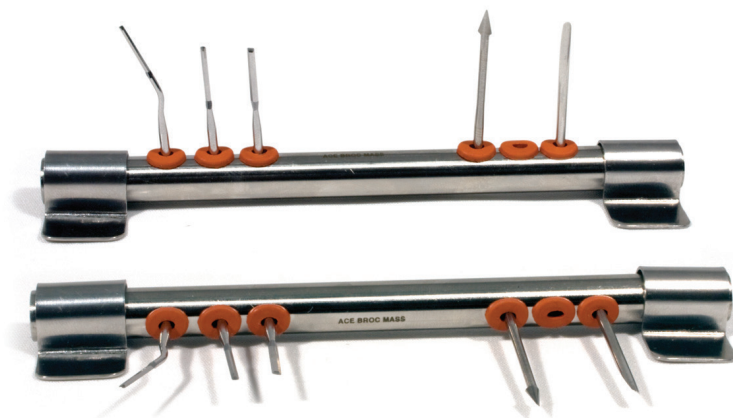
1467005	<b>A</b>	Surgical mallet, 6-½" (16.5cm)	each
1476173	<b>B</b>	Single-end handle only, 6" (15cm)	each
1466802	<b>C</b>	P3, 1.5mm, angled, 1.75" (4.5cm)	each
1463167	<b>D</b>	P1, 2mm, straight, 1.5" (4cm)	each
1466772	<b>E</b>	P2, 1.5mm, straight, 1.5" (4cm)	each
1476174	<b>F</b>	2.5mm, straight, semi rigid, 1.5" (4cm)	each
1466822	<b>G</b>	Arrow tip	each

Blade storage holder, 6" (15.2cm) (not sold individually)

Instrument tray, 175 x 140 x 24mm (not sold individually)



In Use: Periotome is removing the ligament attachment from the root of the tooth and the alveolar housing.





## INSTRUMENTS AND KITS

## BLADE HANDLES

## #3 ACE Flat Blade Handles

- For surgical blades 10 through 15

1463163	<b>A</b>	5" with metric markings	each
1463174		5"	each

## #5 ACE Round-Style Blade Handles

- For surgical blades 10 through 15

1463144	<b>B</b>	6-1/4" straight	each
---------	----------	-----------------	------

## #7 ACE Flat Blade Handles

- For surgical blades 10 through 15

1466790	<b>C</b>	6-1/2" straight	each
---------	----------	-----------------	------

## Swann-Morton® Mini Blade Handles

- For surgical blades 64 through 69

1313657	<b>D</b>	4" straight	each
---------	----------	-------------	------

## ACE STERILE SURGICAL BLADES

## Carbon Steel

1466975	#12	100/box
1463128	#12D	100/box
1463127	#15*	100/box
1463129	#15C	100/box

\* the tip of the 15\* blade is slightly different than a standard 15

## Stainless Steel

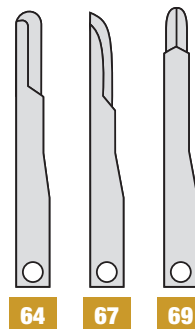
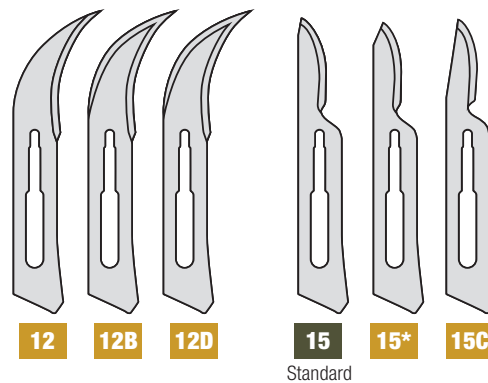
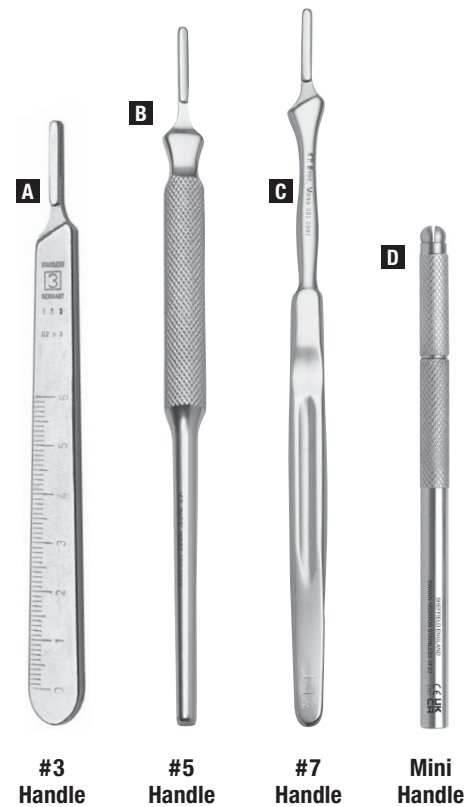
1463073	#15*	100/box
1463130	#15C	100/box

\* the tip of the 15\* blade is slightly different than a standard 15

## ACE STERILE MINI BLADES

## Mini Stainless Steel

1466740	#64	10/pkg
1466800	#67	10/pkg
1463139	#69	10/pkg



SAVE an additional 3% with scheduled deliveries on marked items. See inside front cover for details.

**NEED PRICES?** Follow the link below, or scan the QR code, to view retail pricing. For account specific pricing, please log into your account on our website.

[acesouthern.com/catalog/regen24/page/49](https://acesouthern.com/catalog/regen24/page/49)





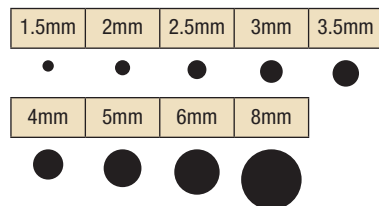


## INSTRUMENTS AND KITS

### TISSUE PUNCHES

Choose between reusable punches and sterile disposable punches.

#### TISSUE PUNCH SIZE CHART



### ACE REUSABLE CONTRA ANGLE MUCOSA PUNCHES

- 1" (25mm)

1260101	2.0mm	each
1150119	3.0mm	each
1150120	4.0mm	each
1150121	5.0mm	each
1150122	6.0mm	each

### PREMIER UNI-PUNCH® DISPOSABLE BIOPSY PUNCHES

- Sterile, seamless, razor sharp blades

3788730	1.5mm	25/box
3781084	2.0mm	25/box
3789872	2.5mm	25/box
3785499	3.0mm	25/box
3786070	3.5mm	25/box
3785707	4.0mm	25/box
3785774	5.0mm	25/box
3785841	6.0mm	25/box
3786022	8.0mm	25/box

#### Assortment

Includes: 5 each of 2.0mm, 3.0mm, 3.5mm, 4.0mm, & 5.0mm

3786156	25/box
---------	--------

### INTEGRA™ STERILE DISPOSABLE BIOPSY PUNCHES

Feature a seamless stainless steel razor sharp cutting edge and a ribbed handle for maximum control and comfort. Each punch is sealed in a color-coded, peel-apart, see-through blister pack.

#### Long-handle

9537722	1.5mm Long-handle	each
9539111	2.0mm Long-handle	each
9537599	3.0mm Long-handle	each
9531340	3.5mm Long-handle	each
9539343	4.0mm Long-handle	each
9535409	5.0mm Long-handle	each
9534123	6.0mm Long-handle	each

#### Long-handle Assortment

Includes: 10 each of 2.0mm, 3.0mm, 4.0mm, 5.0mm, & 6.0mm

9537301	50/box
---------	--------

#### Short-handle

9537681	3.5mm Short-handle	50/box
9532672	4.0mm Short-handle	50/box
9534179	5.0mm Short-handle	50/box
9539670	6.0mm Short-handle	50/box

Uni-Punch® is a registered trademark of Premier® Medical Products.

Integra™ is a trademark of Integra LifeSciences Corporation.



SAVE an additional 3% with scheduled deliveries on marked items. See inside front cover for details.

W: [acesouthern.com](http://acesouthern.com) | P: 1.800.624.5926 | M-F 8am - 7pm EST

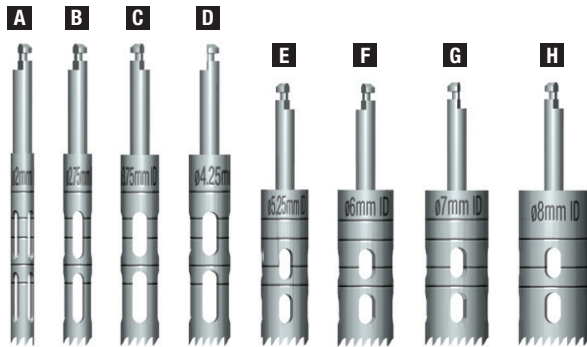
[acesouthern.com/catalog/regen24/page/50](http://acesouthern.com/catalog/regen24/page/50)



## BONE HARVESTING

## ACE TREPHINE BURS - CONTRA-ANGLE

- For harvesting bone in autogenous bone graft placement
- May be used for retrieval of implants
- Laser marked score lines
- Manufactured from Titanium Alloy (Ti-6Al-4V ELI)
- Internally irrigated to minimize the risk of overheating the bone during drilling
- Can be used with the Drill Guide Parallelizing System to eliminate drill chatter during graft or implant harvesting



		I.D. mm	O.D. mm	Length mm	Cutting Length	Markings	
1150104	<b>A</b>	2	2.8	35	18.5 mm	8,10,13,15,18 mm	each
1150105	<b>B</b>	2.75	3.5	35	18.5 mm	8,10,13,15,18 mm	each
1150106	<b>C</b>	3.75	4.6	35	18.5 mm	8,10,13,15,18 mm	each
1150107	<b>D</b>	4.25	5.10	35	18.5 mm	8,10,13,15,18 mm	each
1150108	<b>E</b>	5.25	6.10	32	15.5 mm	8,10,13,15 mm	each
1150109	<b>F</b>	6	6.9	32	15.7 mm	8,10,13,15 mm	each
1150110	<b>G</b>	7	7.9	32	15.8 mm	8,10,13,15 mm	each
1150111	<b>H</b>	8	8.9	32	14 mm	8,10,13 mm	each



## SUGGESTED TREPHINES TO USE FOR RETRIEVE FAILED IMPLANTS For Implants up to.....

3.3 mm use 04948201

3.5–4.0 mm use 04948202

4.5–5.0 mm use 04948401

5.0–6.0 mm use 04948501

**NEED PRICES?** Follow the link below, or scan the QR code, to view retail pricing.  
For account specific pricing, please log into your account on our website.

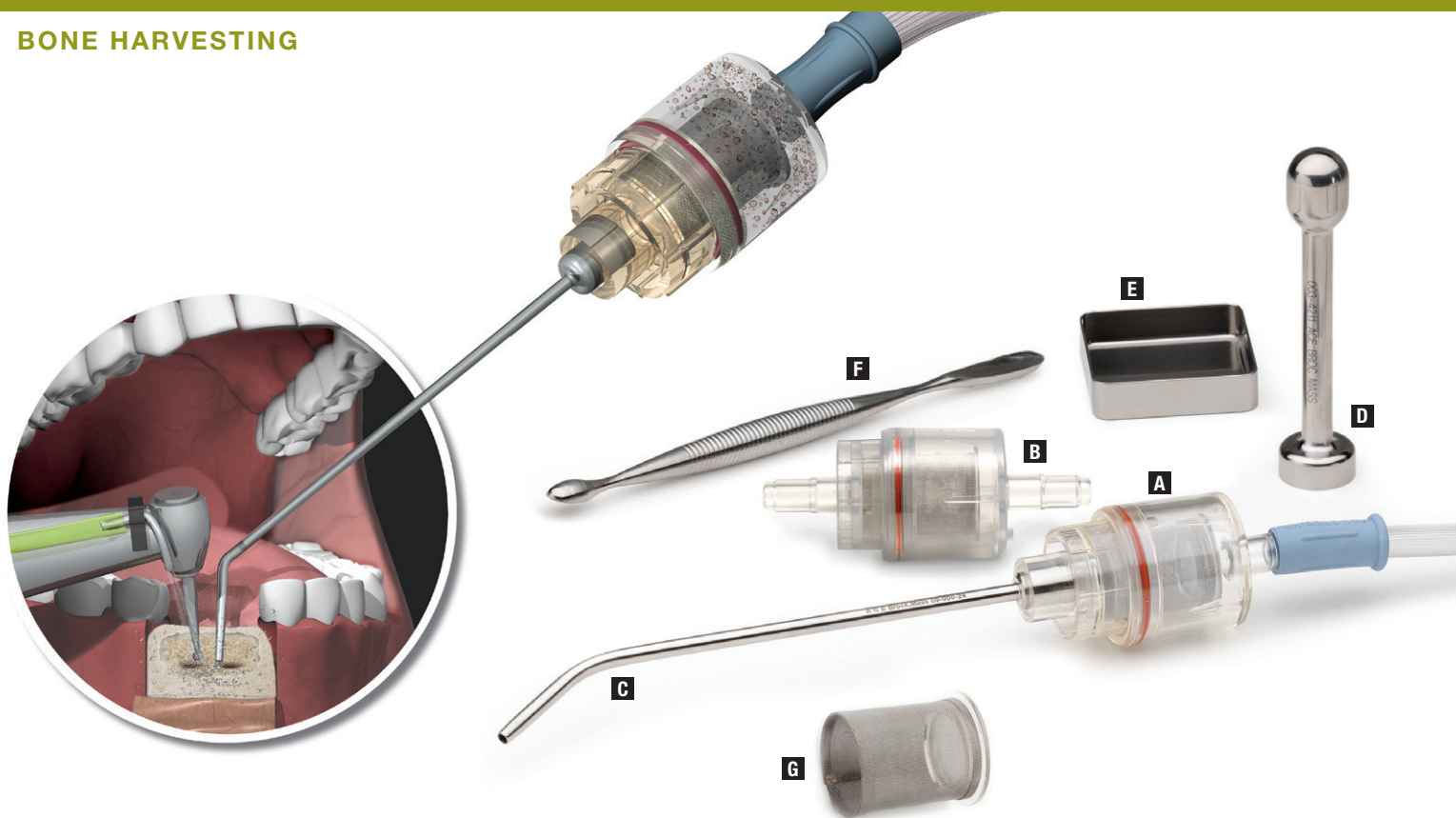
[acesouthern.com/catalog/regen24/page/51](https://acesouthern.com/catalog/regen24/page/51)







## BONE HARVESTING



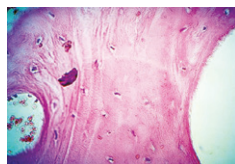
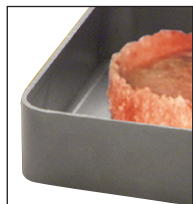
### ACE AUTOgrafter™

#### Simple method for obtaining autogenous bone

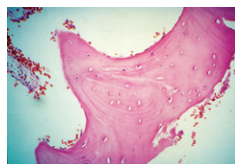
The design of the ACE AUTOgrafter allows the surgeon to filter and retain particles of bone which have been suctioned along with standard irrigation during surgery. The graft may be obtained from almost any bony site; examples include dental implant preparation sites, the mandible, maxilla, calvarium, etc. The collected graft material can be used either in a wet amorphous form, or a compressed osseous particulate. The drier particulate, which

is easier to handle, can be obtained by compressing the collected material in a screen with the titanium plunger. This forces out excess moisture through the screen.

**NOTE:** The ACE AUTOgrafter is not a routine suction device; therefore, bleeding should be controlled prior to use. The ilium should not be used as clots will clog this device.



Regular Bone



Autografted Bone Histology of  
Compressed Cortico/Cancellous Bone

#### ACE Autografter

1092179		Autografter Start Up Kit, (includes: A, C, D and G)	1 kit
1466760	A	ACE Autografter, for HVAC Tip, Autoclavable	each
1212231	B	ACE Autografter	each

#### ACE Autografter Accessories

1466733	C	HVAC Suction Tip, 4mm Tip, 45° Angle, 7" (18cm)	each
1476175	D	Titanium Plunger, 4-1/4", 11cm	each
1150072	E	Square Titanium Bowl, 12mm Deep, 50 x 50mm	each
1150073	F	Implant Curette with Round Cups, Titanium, 5-1/2" (14cm) Cups are 5 x 10mm & 6 x 20mm	each
1092178	G	Screen Assembly, Disposable, Sterile, 12cc Capacity	10/box
1464526		Suction Connection Tubing, Sterile, 3' (.9m)	20/case
1464527		Suction Connection Tubing, Sterile, 6' (1.8m)	20/case

Autografter™ is a trademark of ACE Surgical Supply.

W: [acesouthern.com](http://acesouthern.com) | P: 1.800.624.5926 | M-F 8am - 7pm EST

[acesouthern.com/catalog/regen24/page/52](http://acesouthern.com/catalog/regen24/page/52)



## BONE HARVESTING

**OSSEOUS TECHNOLOGIES  
DISPOSABLE BONE COLLECTOR**

- Harvest valuable autogenous bone
- Correct small defects around implant sites and periodontal comprised teeth
- Shut off valve cuts off suction eliminating the chance of drying out bone
- Includes: 10 Sterile Collectors, each with 1 Filter, per Bag

5610189 Sterile, single-patient use only

10/bag

**ACE BONE CRUSHER**

The Bone Crusher introduces an alternative to the Bone Mill. Insert the bone piece into the crusher and use the pestle in order to crush the bone. If necessary, you may additionally use a mallet.

- Stainless steel

1150092 20mm Crushing surface

each

**INTEGRA™ IMPLANT BONE BASIN**

- Stainless steel
- Autoclavable

9536823

each



**NEED PRICES?** Follow the link below, or scan the QR code, to view retail pricing.  
For account specific pricing, please log into your account on our website.

[acesouthern.com/catalog/regen24/page/53](https://acesouthern.com/catalog/regen24/page/53)







## SUTURES

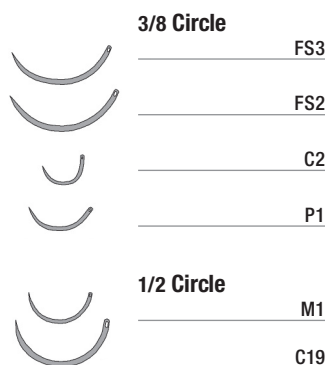
## NEEDLE COMPARISON CHART

## A Selection of Popular Needles

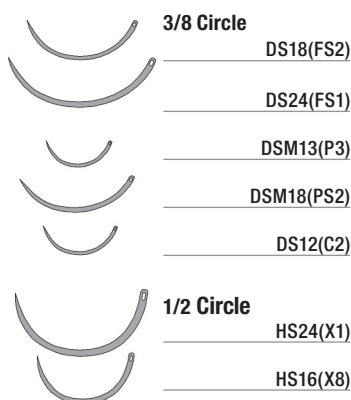
Needle Description	ACE	A. Titan	Ethicon	Hu-Friedy	Look	Myco Reli Pro	Riverpoint
<b>REVERSE CUTTING</b>							
3/8 Circle - 11mm			C-2		C16		
3/8 Circle - 12mm	DS12		C-2	C17	C17	YC-2	
3/8 Circle - 12mm			C-3				
3/8 Circle - 16.2mm	DS16		FS-3	C22	C22	YFS-3	FS-3
3/8 Circle - 19mm	DS18	C-6	FS-2	C6	C6	YFS-2	FS-2
3/8 Circle - 24mm	DS24	C-7	FS-1	C7	C7	YFS-1	
3/8 Circle - 26mm			FS		C8	YFS	
3/8 Circle - 30mm			FSL		C10		
1/2 Circle - 15mm	HS16		M-1	C43	C26		
1/2 Circle - 20mm			J-1		C20		
1/2 Circle - 24mm	HS24	C-9	X-1	C9	C31	YX-1	
1/2 Circle - 26mm			CP-2		C21	YCP-2	
1/2 Circle - 37mm			CP-1		C13	YCP-1	
1/2 Circle - 40mm			CP		C14	YCP	
<b>PRECISION REVERSE CUTTING</b>							
3/8 Circle - 11mm	P1	C-1	P-1	C1	C1	YP-1	
3/8 Circle - 13mm	DSM13	C-3	P-3	C3	C3	YP-3	P-3
3/8 Circle - 16mm			PS-3		PC34		
3/8 Circle - 19mm	DSM18	C-31	PS-2		PC31	YPS-2	PS-2
3/8 Circle - 24.3mm			PS-1		PC33		
1/2 Circle - 18mm			PS-4		PC30		
<b>CONVENTIONAL CUTTING NEEDLES</b>							
3/8 Circle - 11mm			PC-1		CP1		
<b>TAPER POINT</b>							
3/8 Circle - 12mm			C-1		T12		
1/2 Circle - 13mm			TF		T22		TF
1/2 Circle - 18mm	HR17		RB-1		T28		
1/2 Circle - 22mm	HR22		SH-1		T4		
1/2 Circle - 26mm	HR26		SH		T		
1/2 Circle - 26.5mm			CT-2		T5		
1/2 Circle - 36mm			MH		T9		
1/2 Circle - 36.6mm			CT-1		T8		
1/2 Circle - 40mm			CT		T10		
<b>TAPER CUT</b>							
3/8 Circle - 17mm			RB-1		T28		
1/2 Circle - 16mm	HRT17		V-5	D14	Y5		
1/2 Circle - 17mm			V-5		D14		

Taper Point	
Taper Cut	
Blunt Point	
Conventional Cutting	
Precision Point	
Reverse Cutting	
Micro-Point Reverse Cutting	

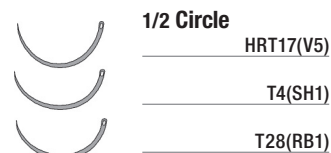
## REVERSE CUTTING NEEDLES



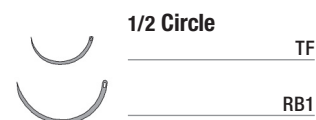
## REVERSE CUTTING NEEDLES



## TAPER POINT NEEDLES



## ROUND DIAMOND NEEDLES





# SUTURES

## ACE PTFE SUTURES

- Undyed white monofilament
- Non-absorbable

				Comparable to ETHICON
<b>Size: 2-0</b>				
1464035	DS18	18"	12/box	FS2
<b>Size: 3-0</b>				
1464037	DS18	18"	12/box	FS2
1464038	DS16	18"	12/box	FS3
<b>Size: 4-0</b>				
1464029	DS16	18"	12/box	FS3
1464032	DS12	18"	12/box	C2
1464027	TF	18"	12/box	TF
1464028	DS18	18"	12/box	FS2
<b>Size: 5-0</b>				
1464034	C19	18"	12/box	C19

## ACE CHROMIC GUT

- Absorbable

				Comparable to ETHICON	Comparable to LOOK
<b>Size: 3-0</b>					
1463949	DS18	18"	12/box	636G	-
1314999	DS18	27"	12/box	636G	560B
1463960	DS24	30"	12/box	-	-
1463964	HR26	30"	12/box	G122H	-
<b>Size: 4-0</b>					
1463951	DS18	18"	12/box	-	558B
1463957	DS18	27"	12/box	635G	-
1463967	DSM13	18"	12/box	1654G	595B
1463970	T4	14"	12/box	-	589B
<b>Size: 5-0</b>					
1463969	T28	14"	12/box	-	590B
1463963	DSM13	18"	12/box	-	1248B

## ACE PLAIN GUT

- Absorbable

				Comparable to ETHICON	Comparable to LOOK
<b>Size: 3-0</b>					
1463956	DS18	18"	12/box	H822G	592B
1463965	DS18	27"	12/box	-	-
1463959	HS24	18"	12/box	612G	594B
1463971	DS24	30"	12/box	H810H	-
<b>Size: 4-0</b>					
1463950	DS18	18"	12/box	7771	591B
1463966	DS18	27"	12/box	H821G	551B
<b>Size: 5-0</b>					
1463972	DSM13	18"	12/box	686G	596B

## ACE SILK

- Black braided
- Non-absorbable

				Comparable to ETHICON	Comparable to LOOK
<b>Size: 3-0</b>					
1463974	DS18	18"	12/box	2772	784B
1463976	DS24	18"	12/box	684G	786B
1463973	HS24	18"	12/box	632G	785B
<b>Size: 4-0</b>					
1463975	DS18	18"	12/box	683G	-

## ACE PGA

- Equivalent to Vicryl®\*\*
- PGA Coated
- Absorption is essentially complete within 50-90 days

- Undyed braided

<b>Size: 4-0</b>					
1463977	DS18	27"	12/box		
1463981	DSM18	18"	12/box		
1463979	DSM13	18"	12/box		
<b>Size: 5-0</b>					
1463980	DSM13	18"	12/box		
<b>Size: 6-0</b>					
1463978	DSM13	18"	12/box		
<b>Size: 3-0</b>					
1463953	DS18	18"	12/box		
<b>Size: 4-0</b>					
1464052	DS18	18"	12/box		
1463983	DSM13	18"	12/box		
<b>Size: 5-0</b>					
1463982	DSM13	18"	12/box		

\*\* Vicryl® is a Registered Trademarks of Ethicon, Inc.

## ACE PGA-RAPID ABSORBING\*

- Equivalent to Vicryl Rapide®\*\*
- Absorption is essentially complete within 49-63 days
- Undyed braided

<b>Size: 3-0</b>					
1463986	DSM18	18"	12/box		
<b>Size: 4-0</b>					
1463985	DSM18	18"	12/box		
<b>Size: 5-0</b>					
1463987	DSM13	18"	12/box		

\* Maintains 50% tensile strength at 5 days; 0% at 14 days (data on file).

\*\* Vicryl® and Vicryl Rapide® are Registered Trademarks of Ethicon, Inc.



SAVE an additional 3% with scheduled deliveries on marked items. See inside front cover for details.

**NEED PRICES?** Follow the link below, or scan the QR code, to view retail pricing.  
For account specific pricing, please log into your account on our website.

[acesouthern.com/catalog/regen24/page/55](https://acesouthern.com/catalog/regen24/page/55)







## INDEX

alloOss® Allograft.....	4-7
alloguide® gf Placental Membrane.....	20
Antralplasty Elevator Kit.....	37
Autogenous Bone Collector.....	51-53
AutoGrafter Autogenous Bone Collector.....	52
Barrier Membranes.....	20-25
Blade and Handles.....	49
Block Graft.....	7
Bone Basin.....	53
Bone Chisels.....	46-47
Bone Collector, Autogenous.....	51-53
Bone Crusher.....	53
Bone Expanders.....	44-47
Bone Fixation System.....	28-29
Bone Harvesting Instruments.....	51-53
Bone Holding Forceps.....	35
Bone Screws, Self Drilling.....	29
Bone Spreader Osteotome.....	47
Bone Tacks.....	29
Bone Trap.....	52-53
Burs, Trephines.....	51
Calipers.....	34
CaSO4 Calcium Sulfate.....	16
conFORM Resorbable Membrane.....	22
Contra-Angle Trephines.....	51
Curettes.....	35-37
Cutting, Wire.....	35
Elevators.....	35-37
Foil, Titanium.....	31
Forceps.....	35
Gauges.....	34

Glustitch PeriAcryl Tissue Adhesive.....	27
Graft Delivery Syringes.....	35
Grafting Instruments.....	35
Induce Oi-9™ Allograft.....	11
Mallets.....	47-48
Measuring Instruments.....	34
Membrane Fixation System.....	28
Mesh.....	30-31
Mineralized Allograft.....	5-7
NuOss® Xenograft.....	12-15
Offset Sinus Lift Osteotomes.....	42
Osseo-Plates.....	31
Osteocel Plus.....	10
perFORM Resorbable Membrane.....	21
Periotome Handle & Blades Kit.....	48
PGA Sutures.....	55
PTFE Membranes.....	24-25
PTFE Sutures.....	55
RCM6® Resorbable Collagen Membrane.....	23
Resorbable Collagen Foam.....	26
Resorbable Collagen Plug.....	26
Resorbable Collagen Tape.....	26
Resorbable Membrane.....	20 - 23
Ridge Expanding Chisels.....	46
Ridge Expanding Screws.....	44
Sinus Lift Elevator Kit.....	37
Sinus Lift Kit.....	36
Sinus Lift Osteotomes.....	40-42
Site Dilator Kit.....	41
Surgical Blade Handles.....	49
Surgical Blades.....	49

Sutures.....	54-55
SynOss Synthetic Bone Graft.....	17
Syringes, Graft Delivery.....	35
Tefguard® PTFE Membranes.....	24-25
Tenting Screws.....	29
Tissue Adhesive, Glustitch PeriAcryl.....	27
Tissue Punches.....	50
Titanium Foil.....	31
Titanium Micro Mesh.....	30
Titanium Reinforced PTFE Membranes.....	25
Trephine Burs.....	51
TruFIX Fixation System.....	28-29
TruSCREWS Bone Screws.....	29
TruTACK and TruSCREW.....	29
TruTACKS Bone Tacks.....	29
VICRYL™ Knitted Mesh.....	25
Wire Cutters.....	35

### TUTORIALS

Tutorial: Block Graft.....	8-9
Tutorial: Crest Preservation.....	26
Tutorial: Grafting with Titanium Mesh.....	32-33
Tutorial: Lateral Sinus Augmentation.....	38-39
Tutorial: Ridge Expanding Chisels.....	46
Tutorial: Ridge Expanding Screws.....	45
Tutorial: Sinus Lift Osteotomes.....	43
Tutorial: TruFIX Fixation.....	9, 32-33, 38-39

## “WHERE’S THE PRICING?”

We want to ensure you have the most current pricing available, but understand sending multiple catalogs a year in order to achieve that has a negative impact on the environment. Therefore, in order to create less waste, we have eliminated pricing from this catalog. Following the link below, or scanning the QR code, will allow you to view current retail pricing. In order to view pricing specific to your account, you must log in to your account on our website. This will also provide real-time product availability information. Plus, ordering is now just a click away!

Simply select the page number or sku in the index and begin!

Visit [acesouthern.com/catalog/regen24](https://acesouthern.com/catalog/regen24) today





## TERMS AND CONDITIONS

**THE HENRY SCHEIN PRICE POLICY:**

We endeavor to maintain prices for the duration of a catalog, but we reserve the right to make price adjustments in response to manufacturers' price increases or extraordinary circumstances. Prices are subject to change without notice.

Henry Schein, Inc. ("Henry Schein") and customer agree that the terms and conditions hereinafter set forth shall govern the relationship between Henry Schein and the customer to the extent that the parties do not have a written agreement in effect that conflicts with such terms and conditions. Customer acknowledges and accepts all such terms and conditions by placing an order for goods with Henry Schein, and upon Henry Schein's delivery of the order to the customer.

**CHOOSE YOUR PAYMENT METHOD**

Reduce the cost and administration of paying Henry Schein—Pay electronically (ACH Debit) or set up AutoPay. Please call Customer Service for details.

For your convenience, we provide several payment alternatives. Orders billed to your account may be paid by ACH Debit, Check by Phone, or Check. If you prefer, you may use your Henry Schein Credit Card, American Express, Visa, MasterCard or Discover Card when placing your order. All sales are subject to our normal terms and conditions.

Unless otherwise instructed, check payments must be mailed to: Henry Schein, Inc. • Dept. CH 10241 • Palatine, IL 60055-0241

All sales are subject to credit approval. Invoices are payable within agreed terms of sale. Henry Schein and its affiliates reserve the right to offer a dual pricing system for payment by check, Henry Schein-approved ACH and/or Henry Schein-approved EFT vs. any other payment method and, to the extent permitted by law, reserves the right to surcharge for payment by credit card and/or other methods incurring a fee to Henry Schein.

**Open Accounts Receivable:**

All unpaid accounts receivable past due are subject to a 1.5% finance charge.

**DELIVERY TERMS:**

Delivery dates are not guaranteed. Purchase orders are subject to product availability. Customers' sole and exclusive remedy for failure to deliver shall be refund of monies paid for the products at issue. Unless otherwise agreed, freight terms are FOB Shipper's Dock ("Ex Works" outside North America). Except as noted below, title passes at the time the shipment is loaded at the shipper's dock.

**California:** For all shipments of goods to customers located within California, title will pass upon receipt of goods by California customers.

**Continental U.S.:** All orders will be subject to a handling charge. This charge includes freight, except for additional carrier charges related to special delivery services and hazardous material shipments. Special orders are subject to additional freight charges.

**Alaska, Hawaii & Pacific Protectorates:** Standard shipping methods provide direct, reduced cost, expedited air delivery service to all accounts in Alaska and Hawaii. Customers in the Pacific Protectorates are offered direct surface transport, or postal services for reliable delivery. No additional surcharges apply, except when special services are requested. Low-level hazardous items (dangerous goods in accepted quantities and Consumer Commodity ID 8000) are now available via UPS 2nd-day air.

**Guam, Puerto Rico, U.S. Trust Territories & Virgin Islands:**

• All orders will be subject to a handling charge. This charge includes freight through the United States Postal Service (USPS). • Special delivery orders and hazardous material shipments can be shipped via United Parcel Service (UPS) for an additional charge. No minimum order amount or weight applies. Speak to your International Representative for details.

**Outside U.S. (50 States):** If your order is being shipped outside the U.S. (50 states), please refer to the International Terms & Conditions at [henryschein.com](http://henryschein.com). Unless otherwise agreed, freight terms are FOB Shipper's Dock ("Ex Works" outside North America). Title passes at the time the shipment is loaded at the shipper's dock. Customer is responsible for compliance with any applicable import requirements.

**RX PRODUCTS & CONTROLLED SUBSTANCES:**

• Regulations require us to limit the sale of Rx and controlled substances only to registered, licensed healthcare professionals. If you are a new customer or have recently moved, please furnish us with a copy of your updated state and federal registrations verifying your shipping address. Please note that all orders for controlled substances are subject to a due diligence review process. Schedule II controlled substances can be ordered electronically or by mail. For more information on our Controlled Substance Ordering System please visit [www.henryschein.com/e222](http://www.henryschein.com/e222); if you prefer to continue using Federal 222 Forms to order Schedule II controlled substances, mail the form to: Henry Schein, Inc. 5315 West 74th Street • Indianapolis, IN 46268

• Henry Schein restricts the sale or other transfer of medications to prisons/correctional facilities for use in lethal injections, based on our manufacturer agreements. The goods Henry Schein sells are intended to be used for their label-approved purposes or applicable standards of care, which do not include human lethal injection.

**REGULATORY REQUIREMENTS:**

Local regulatory requirements may apply to use or installation of certain products. Be sure to understand and comply with any such requirements prior to purchase, use, or installation of products.

**THE DRUG SUPPLY CHAIN SECURITY ACT (DSCSA):**

(MN, DM, WH, M2) The Drug Supply Chain Security Act (DSCSA) information related to prescription drug products is available on our website [www.HenrySchein.com/pedigree](http://www.HenrySchein.com/pedigree). If you have any problems accessing our website or would like to receive a copy of DSCSA documentation via fax, mail or email, please contact our customer service department.

**RETURNS:**

WE CANNOT ACCEPT ANY RETURNS WITHOUT PRIOR AUTHORIZATION.

To arrange for a return, simply call our Customer Service department or contact your Sales Consultant.

The following conditions must be complied with:

• All returns must be accompanied by a copy of your invoice and a reason for the return • Merchandise must be returned in its original container, unmarked, and properly packaged • Returned products must have been purchased within the previous thirty (30) days. Any returns past thirty (30) days are subject to a restocking fee • Shortages or errors in shipments must be reported within seven (7) days of invoice date to issue credit (if applicable) • Shipping charges will apply on all returns

**Exceptions:**

The following special, customized, or government-regulated items are not returnable:

• Opened handpieces, small equipment, and custom-ordered equipment • Special order items (products that we do not ordinarily stock) • Personalized and imprinted items • Opened computer hardware and software • Hazardous/flammable materials • Expired products • Items that cannot be returned to the manufacturer • Any item marked non-returnable • Items required to be shipped and stored frozen • Any drop-shipped products

**Prescription Drug Returns:**

Please note that, in order to comply with Federal and State traceability requirements, prescription drugs may be returned providing that the following key elements are met:

- 1) Returns of prescription drugs will only be accepted if Henry Schein is notified within 30 calendar days of shipment date and valid return authorization is issued by Henry Schein.
- 2) The Prescription Drug Marketing Act requires any customer returning prescription drugs to complete and return a Prescription Drug Return Authorization form. Federal law requires that the healthcare entity returning prescription drugs document that the product was kept under proper storage and handling conditions while in their possession and during the return of the product. To get a copy of the form and proper return authorization, please contact Customer Service.
- 3) In addition, traceability regulations require that the healthcare entity returning prescription drugs certifies that the product being returned is the same exact product purchased from HSI.
- 4) Henry Schein will not issue credit for any returned prescription drugs which return was not authorized as provided herein, have been tampered with or where the labeling has been altered in any way.

**INSTITUTIONAL, GOVERNMENT & CORPORATE ACCOUNTS:**

Terms of Sale follow the same guidelines unless denoted differently in a contract. When applicable, freight is calculated by the weight. There is no minimum order; however, there is a nominal handling charge on orders under \$125. Some offers and promotions outlined in this catalog may not apply. Requests for bids and proposals may be sent to:

Henry Schein, Inc. • Bid Department—E255  
135 Duryea Rd. • Melville, NY 11747

**INTERNATIONAL ORDERS:**

We proudly serve healthcare professionals, governments, and dealers throughout the world. To place orders or for inquiries on export terms and conditions please contact the International Department (USA) at: [export@henryschein.com](mailto:export@henryschein.com).

**ARBITRATION:** All Claims related to or arising under or relating to this Agreement (except for Claims for non-payment of amounts due to

Henry Schein for the sale of products) are to be exclusively and finally determined by binding arbitration in the state of New York, or another location mutually agreeable to the parties. Any and all Claims must be arbitrated on an individual basis, and there shall be no right or authority for any Claims or disputes to be arbitrated on a class action or collective basis. For avoidance of doubt, each party irrevocably waives any right to: (i) have any Claim resolved in connection with any class action or collective action, or (ii) recover any damages or relief directly or indirectly as part of any class action or collective action. The arbitration shall be conducted on a confidential basis pursuant to the Commercial Arbitration Rules of the American Arbitration Association, or if applicable, under its Procedures for Large, Complex Commercial Disputes. Any decision or award as a result of any such arbitration proceeding shall be in writing and shall provide an explanation for all conclusions of law and fact and shall include the assessment of costs, expenses and reasonable attorneys' fees. Any such arbitration shall be conducted by an arbitrator experienced in the disputed subject matter and shall include a written record of the arbitration hearing. The parties reserve the right to object to any individual who shall be or has been at any time employed by or affiliated with a competing organization or entity. An award of arbitration may be confirmed in a court of competent jurisdiction. To the extent that any Claim or dispute is determined to not be subject to arbitration, all other Claims or disputes that would otherwise be subject to arbitration must be arbitrated. As used in this Agreement, "Claims" shall mean any and all liabilities, disputes and expenses whatsoever including, without limitation, claims, adversary proceedings (whether before a court, administrative agency or any other tribunal), damages (whether compensatory, multiple, exemplary or punitive), judgments, awards, penalties, settlements, investigations, costs, responses to subpoenas or other governmental directives and reasonable attorneys' fees and disbursements with respect to any claims that may be sustained, suffered or incurred by a Party hereto.

**WARRANTIES:** Henry Schein will pass through to the customer, at the time of sale, any transferable product warranties, indemnities and remedies provided to Henry Schein by the applicable manufacturer. EXCEPT AS OTHERWISE PROVIDED HEREIN, TO THE EXTENT PERMITTED BY LAW, HENRY SCHEIN PROVIDES NO WARRANTIES OF ANY KIND, EXPRESS OR IMPLIED, INCLUDING WITHOUT LIMITATION ANY WARRANTY OF MERCHANTABILITY, FITNESS FOR PARTICULAR PURPOSE OR NON-INFRINGEMENT, AND THE CUSTOMER SHALL LOOK TO THE MANUFACTURER OF THE PRODUCT FOR ANY WARRANTY THEREON.

**LIMITATION OF LIABILITY:** THE CUSTOMER AGREES TO LOOK SOLELY TO THE MANUFACTURER OF THE PRODUCT FOR ANY CLAIM ARISING DUE TO LOSS, INJURY, DAMAGE OR DEATH RELATED TO THE USE OR SALE OF PRODUCTS. HENRY SCHEIN SHALL NOT BE LIABLE FOR INDIRECT, INCIDENTAL, PUNITIVE, SPECIAL OR CONSEQUENTIAL DAMAGES INCLUDING, BUT NOT LIMITED TO, LOST PROFITS AND LOSS OF GOODWILL, ARISING FROM OR RELATING TO ANY BREACH TO THIS AGREEMENT (OR ANY DUTY OF COMMON LAW, AND WHETHER OR NOT OCCASIONED BY THE NEGLIGENCE OF HENRY SCHEIN OR ITS AFFILIATES), REGARDLESS OF ANY NOTICE OF THE POSSIBILITY OF SUCH DAMAGES.

**DISCOUNTS, REBATES AND DISCLOSURES:** Invoice or statement prices may reflect or be subjected to a bundled discount or rebate pursuant to purchase offer, promotion or discount program. You must fully and accurately report to Medicare, Medicaid, Tricare and/or any other federal or State program, upon request by such program, the discounted price(s) or net price(s) for each invoiced item, after giving effect to any applicable discounts or rebates, which price(s) may differ from the extended prices set forth on your invoice. Accordingly, you should retain your invoice and all relevant information for your records. It is your responsibility to review any agreements or other documents, including offers or promotions, applicable to the invoiced products/prices to determine if your purchase(s) are subject to a bundled discount or rebate. Any such discounts must be calculated pursuant to the terms of the applicable purchase offer, promotion or discount program. Participation in a promotional discount program is only permissible in accordance with discount program rules. By participation in such program, you agree that, to your knowledge, your practice complies with the discount program requirements.

Terms of Sale may change without notice.

For current information, go to [www.henryschein.com/legalterms](http://www.henryschein.com/legalterms).





# ACE SOUTHERN

A HENRY SCHEIN® BRAND

ACE SOUTHERN  
135 Duryea Rd.  
Melville, NY 11747

PRSR STD  
U.S. POSTAGE  
**PAID**  
HENRY SCHEIN, INC.



Home of the  
**TRUSTED** line of  
Grafting Products  
from ACE



© 2024 Henry Schein, Inc. Henry Schein is a registered trademark of HS TM, LLC.

800.624.5926

info@acesouthern.com

acesouthern.com



REGEN24