



ACE SOUTHERN

A HENRY SCHEIN® BRAND

YOUR GENERATION OF BONE REGENERATION

Natural Anorganic Bovine Bone Matrix.



- Physically and chemically comparable to the mineral matrix of human bone
- One of the most widely used bone substitutes by dental professionals¹
- Available in a variety of formulations

¹ Reference on back

NuOss GRANULES

NuOss natural cancellous and cortical bone matrix is produced by the removal of all organic components from bovine bone. Due to its natural porous structure, NuOss is physically and chemically comparable to the mineralized matrix of human bone.

The proprietary manufacturing process of NuOss allows for maintenance of the naturally occurring bone mineral structure, including macroscopic and microscopic structures. Due to this trabecular architecture with interconnecting macro and micro pores, the ingrowth of new bone and associated vascularization at the grafting site is optimized.

NuOss may be used with autogenous bone where there is an insufficient quantity of bone to fulfill the needs of the proposed surgical procedure.

NuOss Granules are recommended for:

- Augmentation or reconstructive treatment of the alveolar ridge
- Filling of infrabony periodontal defects
- Filling of defects after root resection, apicoectomy, and cystectomy
- Filling of extraction sockets to enhance preservation of the alveolar ridge
- Elevation of the maxillary sinus floor
- Filling of periodontal defects in conjunction with products intended for Guided Tissue Regeneration (GTR) and Guided Bone Regeneration (GBR)
- Filling of peri-implant defects in conjunction with products intended for Guided Bone Regeneration (GBR)



NuOss®

cancellous and
cortical granules

NuOss Granules Features:

Handling: The structure of NuOss aids in particle hydration and delivery of the product to the defect.

Particle Distribution: NuOss maximizes the distribution of the preferred particle sizing within desired ranges.

Particle Structure and Porosity: NuOss maintains the high porosity and trabecular structure of natural mineralized bone and maximizes the potential for angiogenesis.²



delivery syringe

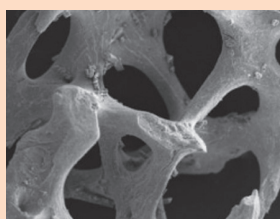
NuOss DS Features:

Granules: NuOss DS features our best-selling small particle NuOss cancellous granules.

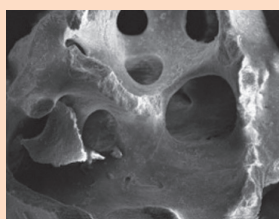
Delivery Syringe: The preloaded NuOss Delivery Syringe makes it easier to hydrate and place the graft material, minimizing preparation time and particulate migration at the surgical site.



50x Magnification



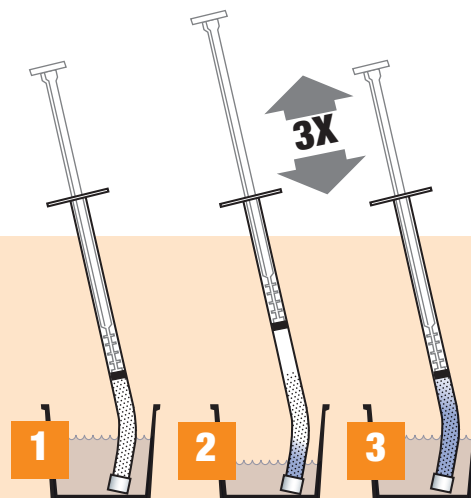
NuOss



Bio-Oss®

Hydration Instructions

After hydration, remove cap for delivery of the product to the defect.



NuOss COLLAGEN

Just like NuOss granules, naturally structured NuOss Collagen combines the mineral properties of cancellous particulate with the space maintenance of collagen. This highly manageable combination provides a convenient approach to filling periodontal and maxillofacial defects. With NuOss Collagen products, there is no mixing or loose handling.

NuOss Collagen is recommended for:

- Elevation of the maxillary sinus floor
- Filling of infrabony periodontal defects
- Augmentation or reconstructive treatment of the alveolar ridge
- Filling of defects after root resection, apicoectomy, and cystectomy
- Filling of extraction sockets to enhance preservation of the alveolar ridge
- Filling of periodontal defects in conjunction with products intended for Guided Tissue Regeneration (GTR) and Guided Bone Regeneration (GBR)
- Filling of peri-implant defects in conjunction with products intended for Guided Bone Regeneration (GBR)



NuOss®
collagen block

NuOss Collagen Block Features:

Available in 3 sizes, NuOss Collagen can be easily trimmed to shape the defect. Hydration can be done prior to insertion or once it has been placed.



anorganic bovine bone
with collagen

NuOss Plug Features:

Designed to aid in filling extraction sites to enhance preservation of the alveolar ridge. NuOss Plug is easy to place and prevents particulate migration once placed into the surgical site.



socket and sinus
expanding composite

NuOss XC Features:

Expansion: Expanding composite material allows for placement in a compressed form. Upon hydration/contact with blood, the material will self-expand to fill the entire defect.

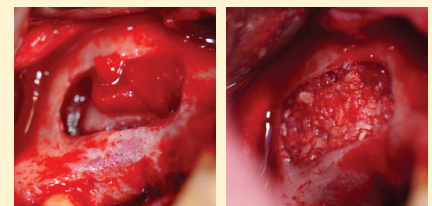
NuOss XC Socket: Preshaped and ready to place directly into the extraction cavity.

NuOss XC Sinus: Upon successful elevation of the sinus membrane, NuOss XC Sinus is placed without pre-hydration, into the sinus cavity.

NuOss XC Socket



NuOss XC Sinus



NuOss XC surgical photography shown provided by Dr. Frank Kung - Austin, TX

NuOss Cancellous Particulate

1260499	0.25-1.0mm	0.25g	0.6cc
1260505	0.25-1.0mm	0.5g	1.2cc
1260513	0.25-1.0mm	1.0g	2.4cc
1260506	0.25-1.0mm	2.0g	4.7cc
1260508	1.0-2.0mm	0.5g	1.7cc
1260510	1.0-2.0mm	2.0g	6.8cc

NuOss Cortical Particulate

1090007	0.50-1.0mm	0.25g	0.4cc
1090008	0.50-1.0mm	0.5g	0.8cc
1090009	0.50-1.0mm	1.0g	1.6cc
1090010	0.50-1.0mm	2.0g	3.2cc

NuOss Cancellous Particulate in a Delivery Syringe

1260507	0.25-1.0mm	0.25cc
1260509	0.25-1.0mm	0.50cc

NuOss Collagen Block

1099742	6 x 7 x 8mm	100mg
1098872	8 x 9 x 9mm	250mg
1098438	10 x 11 x 12mm	500mg

NuOss Plug

1404357	9 x 15mm	tapered	5/box
1404358	10 x 20mm	straight	5/box

NuOss XC Socket

1175046	6 x 15mm	expanded	each
1175047	9 x 15mm	expanded	each

NuOss XC Sinus

1175049	17 x 10mm	expanded	each
1175051	22 x 12mm	expanded	each

Copyright © Henry Schein, Inc.

Henry Schein is a registered trademark of HS TM, LLC.

NuOss® is a registered trademark of ACE Surgical.

BioOss® is a registered trademark of ED. GEISTLICH SOHNE AG.

For the most up-to-date pricing, please contact ACE SOUTHERN or visit our website at www.acesouthern.com.

Footnote References:

- 1 2019 U.S. Market Report Suite for Dental Bone Graft Substitutes and Other Biomaterials; iDATA_USDBGS19_MS (pages 37, 130-131, 133, 152 and 158).
- 2 Klenke FM, Liu Y, Yuan H, Hunziker EB, Siebenrock KA, Hofstetter W. Impact of pore size on the vascularization and osseointegration of ceramic bone substitutes in vivo. J Biomed Mater Res A. 2008 Jun 1;85(3):777-86.

