

INDIRECT OIL HEATER

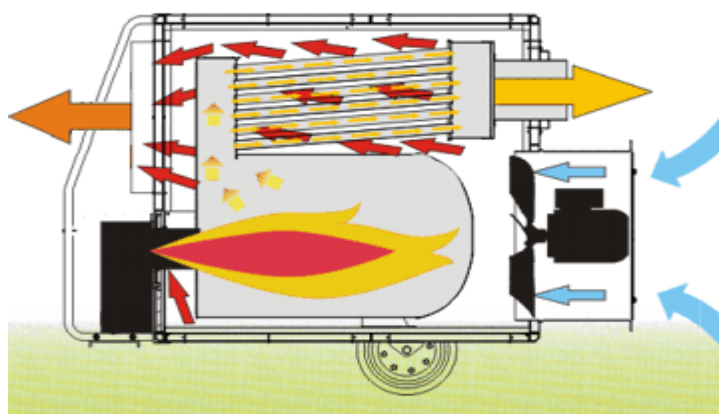
BV 310FS



PROGETTO NOLEGGI[®]

by PETROLGAS s.r.l.

FUNCTIONING PRINCIPLES



The unit is heating air that flows through it by combustion chamber and heat exchanger. Supply fuel is burnt in combustion chamber. Flue gas goes through heat exchanger outside to the chimney. Start of the device starts off the burner. After warming up the thermostat starts the fan. Cool air is sucked by fan. After heating air is exhausted outside through outlet panel (one, two or four way). The automatic and safe thermostat (with manual reset) are responsible for safe and correct work of device. In case of too high temperature increase, automatic thermostat cut off the fuel supply to the burner. After that unit is chilled to safe temperature and then starts again. In case of critical temperature the unit is stopped by safe thermostat. Restart is only possible after chilling the unit and after manual reset the safe thermostat. Additionally the fan motor is secure by thermic relay, which protect it against overload. BV/GREEN machines can be operated optional in heat mode and vent mode (without burner).

TECHNICAL DATA

Max capacity	kW	75	Fuel consumption	kg/h	6,4
	Kcal/h	64532	Air outlet	mm	4x ø225
	Btu/h	255911	Fan		axial
Combustible		Oil / Kerosene	Power supply	V	~230
Net weight	kg	162	Frequency	Hz	50
Gross weight	kg	185	Rated current	A	6,2
Noise level	dB(A)	78			
Air displacement	m ³ /h	4400			

PACKING

Dimensions packing	mm	1500 x 620 x 1080
Dimensions utilization	mm	1654 x 750 x 1092
Pieces per Euro-pallet	n°	1
Pieces per truck 80m ³	n°	60

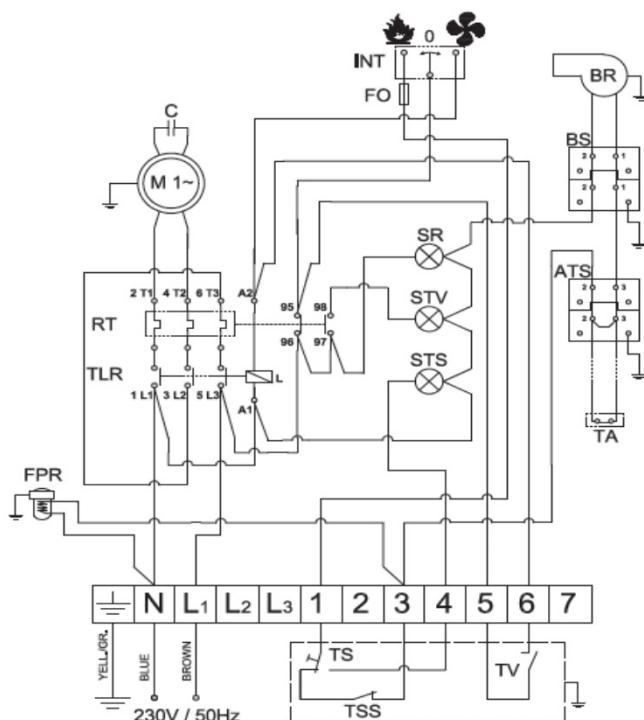
COMPONENTS

Burner	Riello RG2F
Nozzle	1.5GPH 60°S
Igniter	electrodes
Fuel filter	100 µm, pre-heater 100W
Motor	asynchronous, monophase, 1400 g/1'
Fan	∅450/36° 6-blades
Room thermostat	predisposed for connection to room thermostat

ACCESSORIES

Room thermostat	thermostat TH5
Tank	85 l
Air distribution hoses	flexible hoses 7,6 m
Turning wheel	metal-rubber wheel with brake, diameter 125 mm
Twin bends	Inlet ∅450mm, outlet 2x ∅315mm
One way air-outlet panel	∅450
Other	fuel scoop, transport guides

WIRING DIAGRAM



M	:	MOTOR
C	:	CAPACITOR
TLR	:	CONTACTOR
RT	:	THERMIC RELAY
BR	:	BURNER
TS	:	OVERHEAT THERMOSTAT
FPR	:	PREHEATED OIL FILTER
TA	:	AMBIENCE THERMOSTAT
BS	:	BURNER SOCKET
TSS	:	ADDITIONAL OVERHEAT THERMOST.
TV	:	FAN THERMOSTAT
FO	:	BURNER FUSE
INT	:	SWITCH
SR	:	ELECTRIC SUPPLY LED
STV	:	FAN LOCKOUT LED
STS	:	OVERHEAT THERMOSTAT LED
ATS	:	AMBIENCE THERMOSTAT SOCKET
L	:	COIL