

CBS EXECUTIVE SUSTAINABLE LEADERSHIP & TRANSFORMATION

SUSTAINABILITY IN THE US

KEY SCENARIOS AHEAD OF THE ELECTION

EXECUTIVE MORNING BRIEF, SEP 24TH, 2024



SUSTAINABILITY IN THE US

KEY QUESTIONS

Where does sustainability stand in the US after the anti-ESG backlash?

What are likely implications of a Harris/Walz or Trump/Vance victory for the sustainability agenda?

How should global firms navigate the differing ESG regulation landscape in the EU and US?

SUSTAINABILITY IN THE US EXPERTS



Eric is a tenured professor in the Legal Studies and Business Ethics Department with a secondary appointment in the Management Department.

Eric also serves as the faculty director of the Initiative for Global Environmental Leadership and faculty co-director of the FINRA/Wharton Certified Regulatory and Compliance Professional Program.



ERIC ORTS

Guardsmark Professor, The Wharton School



Andreas is Professor of Business in Society at CBS' Centre for Sustainability

Andreas' research has been published in several top-tier international journals and he has won several awards for his executive teaching

His research examines the intersection of Corporate Sustainability, Sustainable Finance and the political role of firms



ANDREAS RASCHE

Professor, Copenhagen Business School



Position Green*

JULIA STAUNIG

Managing Director and Chief Strategy Officer, Position Green

Julia is MD for Position Green and responsible for the group's strategic directory.

Julia has more than 20 years of experience from the intersection of business strategy, sustainability, and regulation.

She helps companies with ESG software solutions, tailored consulting projects, or a combination of both.

Slido:

What do you consider the biggest sustainability achievement of the Biden-Harris administration?



CBS EXECUTIVE SUSTAINABLE LEADERSHIP & TRANSFORMATION

EXECUTIVE LEADERSHIP PROGRAM

KICK-OFF JANUARY 2025



Learn more and sign up
cbs-executive.dk/sustainable

Gain Sustainability Literacy

Cultivate a Sustainable Leadership Mindset

Align and Future-proof your Strategy

Lead the Transformation

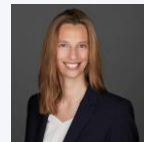
*In collaboration with IMD Business School
Double degree certificate available*



CREATING VALUE IN THE CIRCULAR ECONOMY EXECUTIVE MORNING BRIEF



Andreas Rasche
Professor of Business in Society, CBS



Julia Binder
Professor of Sustainable Innovation
and Business Transformation, IMD

October 31st, 9-9.45

Learn more and sign up
cbs-executive.dk/events



Henrik Waitz
Program Director

hw@cbs-executive.dk



Tobias Thaning
Community Director

tt@cbs-executive.dk