

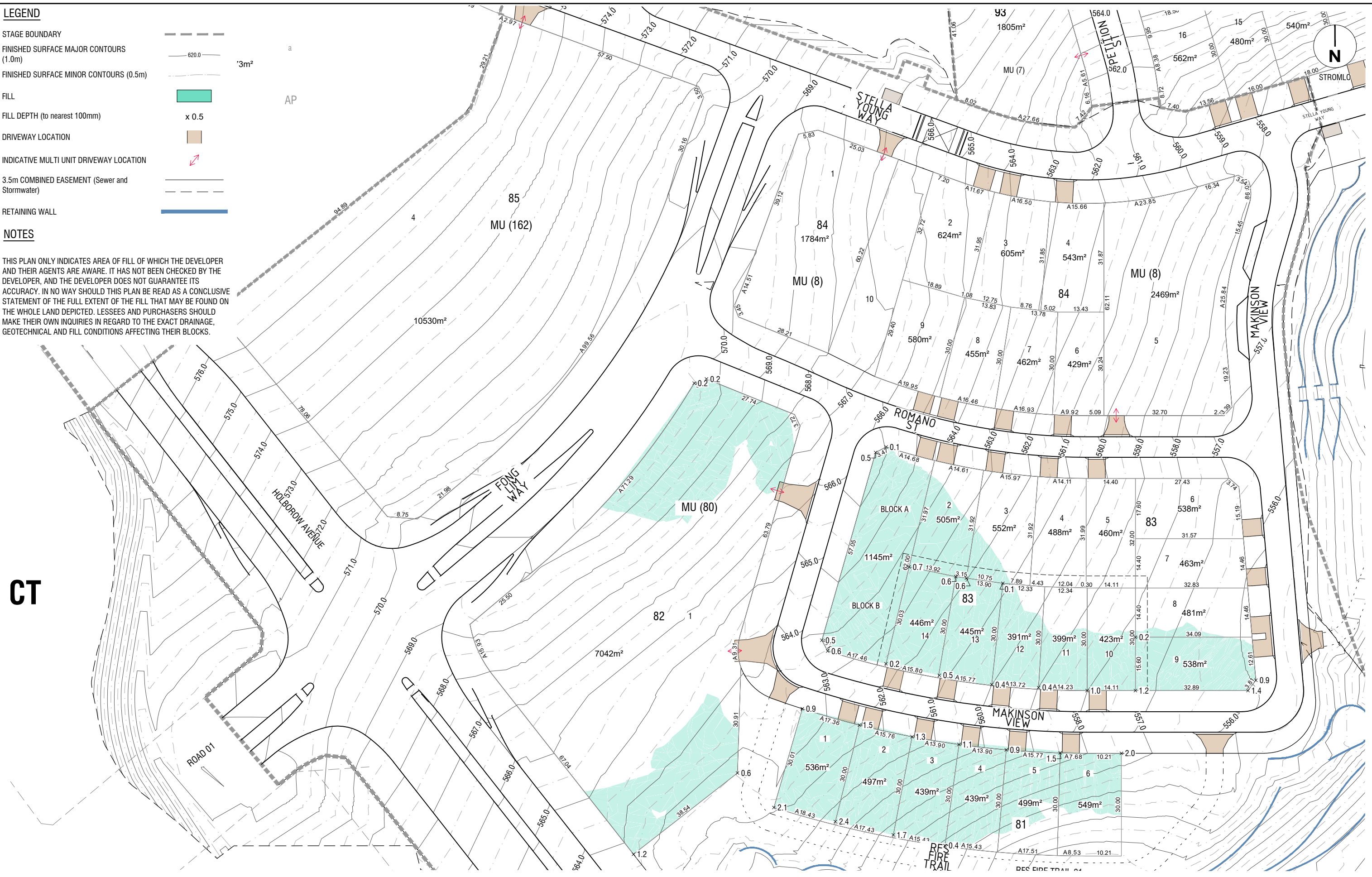
LEGEND

- STAGE BOUNDARY
FINISHED SURFACE MAJOR CONTOURS (1.0m)
FINISHED SURFACE MINOR CONTOURS (0.5m)
FILL
FILL DEPTH (to nearest 100mm)
DRIVEWAY LOCATION
INDICATIVE MULTI UNIT DRIVEWAY LOCATION
3.5m COMBINED EASEMENT (Sewer and Stormwater)
RETAINING WALL

NOTES

THIS PLAN ONLY INDICATES AREA OF FILL OF WHICH THE DEVELOPER AND THEIR AGENTS ARE AWARE. IT HAS NOT BEEN CHECKED BY THE DEVELOPER, AND THE DEVELOPER DOES NOT GUARANTEE ITS ACCURACY. IN NO WAY SHOULD THIS PLAN BE READ AS A CONCLUSIVE STATEMENT OF THE FULL EXTENT OF THE FILL THAT MAY BE FOUND ON THE WHOLE LAND DEPICTED. LESSEES AND PURCHASERS SHOULD MAKE THEIR OWN INQUIRIES IN REGARD TO THE EXACT DRAINAGE, GEOTECHNICAL AND FILL CONDITIONS AFFECTING THEIR BLOCKS.

CT



F	WORKS AS EXECUTED	C.J.C	29-01-25
E	FILL ON BLOCKS UPDATED	C.J.C	18-05-23
D	ISSUED FOR APPROVAL	C.J.C	28-04-22
C	BLOCK NUMBERS ADJUSTED	C.J.C	20-04-22
B	FILL ON BLOCKS UPDATED. VIEWPORT MOVED TO REFLECT NEW STAGING	BC	20-09-21
A	ISSUED TO CLIENT	BC	03-05-21
Rev	Amendments	Approved	Date

1:500@ A1
SCALE
1:1000@ A3



© Spiire Australia Pty Ltd All Rights Reserved
This document is produced by Spiire Australia Pty Ltd solely for the benefit of and use by the client in accordance with the terms of the retainer. Spiire Australia Pty Ltd does not and shall not assume any responsibility or liability whatsoever to any third party arising out of any use or reliance by third party on the content of this document.

spiire

Suite 3, Level 1, 243 Northbourne Ave Lyneham 2602
Australian Capital Territory Australia T 61 2 6102 1000
spiire.com.au ABN 55 050 029 635

CAPITAL ESTATE
DEVELOPMENTS

Designed
R. MURDOCK
Authorised
B. CARGILL

Denman
Prospect

Checked
B. CARGILL
Date
20-04-21

DENMAN PROSPECT 2
STAGES 1 2A & 2B
FILL ON BLOCK PLAN
STAGE 1 - SECTION AP
ACT
CED

Drg No
308664CS030

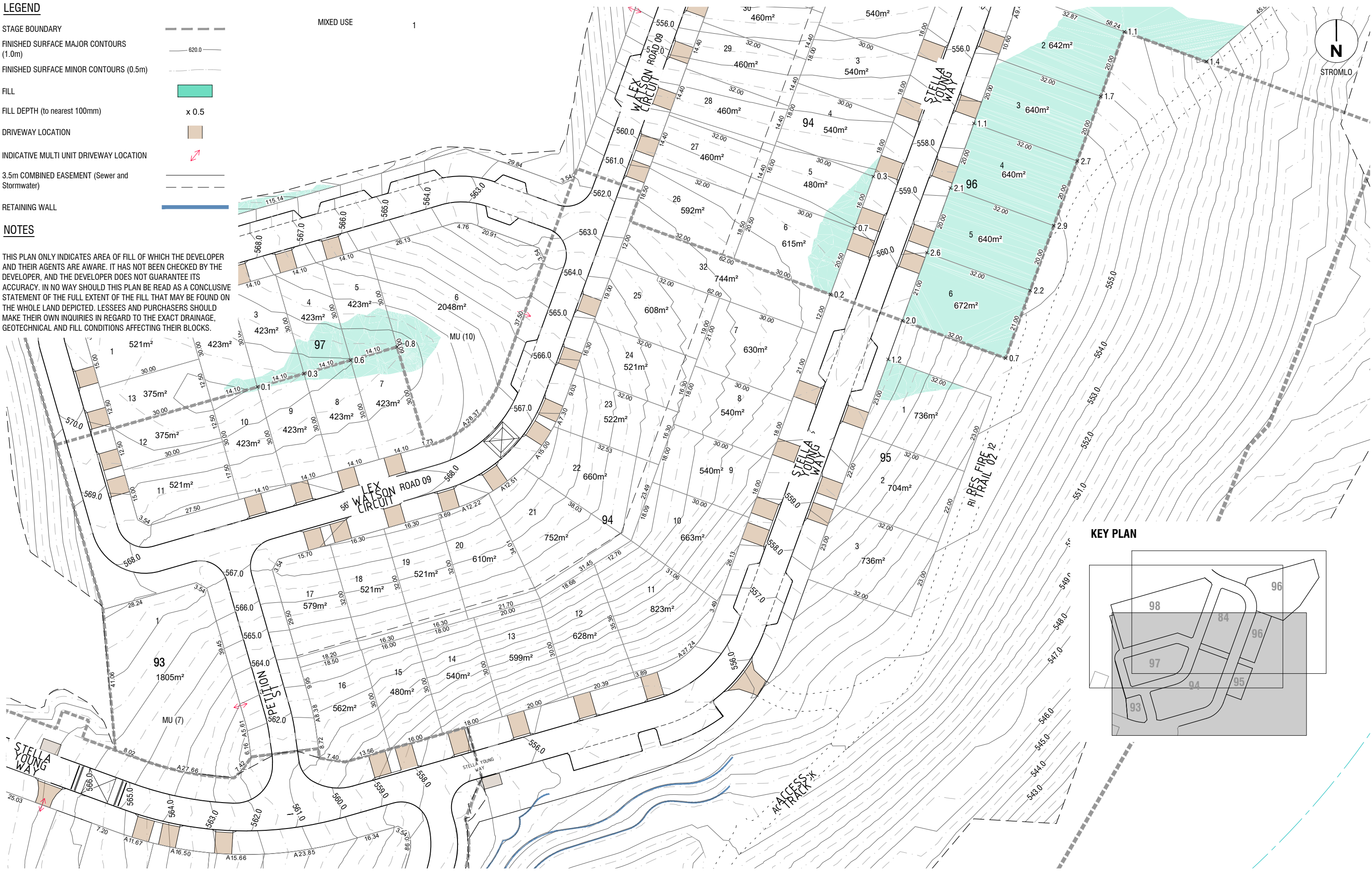
Rev
F

LEGEND

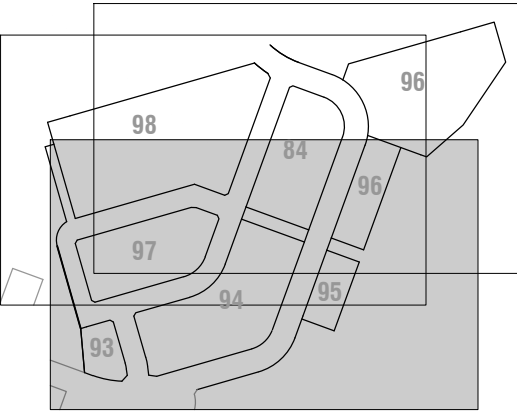
- STAGE BOUNDARY
FINISHED SURFACE MAJOR CONTOURS (1.0m)
FINISHED SURFACE MINOR CONTOURS (0.5m)
FILL
FILL DEPTH (to nearest 100mm)
DRIVEWAY LOCATION
INDICATIVE MULTI UNIT DRIVEWAY LOCATION
3.5m COMBINED EASEMENT (Sewer and Stormwater)
RETAINING WALL

NOTES

THIS PLAN ONLY INDICATES AREA OF FILL OF WHICH THE DEVELOPER AND THEIR AGENTS ARE AWARE. IT HAS NOT BEEN CHECKED BY THE DEVELOPER, AND THE DEVELOPER DOES NOT GUARANTEE ITS ACCURACY. IN NO WAY SHOULD THIS PLAN BE READ AS A CONCLUSIVE STATEMENT OF THE FULL EXTENT OF THE FILL THAT MAY BE FOUND ON THE WHOLE LAND DEPICTED. LESSEES AND PURCHASERS SHOULD MAKE THEIR OWN INQUIRIES IN REGARD TO THE EXACT DRAINAGE, GEOTECHNICAL AND FILL CONDITIONS AFFECTING THEIR BLOCKS.



KEY PLAN



file name: 308664CS040.dwg, input name: CS040, plotted by: Kate Robinson
file location: G:\30303664\City\ACAD\sales plans\stage 1 & 2, plot date: 30/01/2025 10:12 AM, Sheet 1 of 2

D	WORKS AS EXECUTED	C.J.C	29-01-25
C	FILL ON BLOCKS UPDATED	C.J.C	18-05-23
B	FILL ON BLOCKS UPDATED	BC	20-09-21
A	ISSUED TO CLIENT	BC	10-05-21
Rev	Amendments	Approved	Date

1:500@ A1
SCALE
1:1000@ A3



© Spiire Australia Pty Ltd All Rights Reserved
This document is produced by Spiire Australia Pty Ltd solely for the benefit of and use by the client in accordance with the terms of the retainer. Spiire Australia Pty Ltd does not and shall not assume any responsibility or liability whatsoever to any third party arising out of any use or reliance by third party on the content of this document.

spiire

Suite 3, Level 1, 243 Northbourne Ave Lyneham 2602
Australian Capital Territory Australia T 61 2 6102 1000
spiire.com.au ABN 55 050 029 635

CAPITAL ESTATE
DEVELOPMENTS

Designed
R. MURDOCK
Authorised
B. CARGILL

Denman
Prospect

Checked
B. CARGILL
Date
10-05-2021

DENMAN PROSPECT 2
STAGES 1 2A & 2B
FILL ON BLOCK PLAN
STAGE 2 - SECTION AS, AU, AT
ACT
CED

Drg No
308664CS040

Rev
D

LEGEND

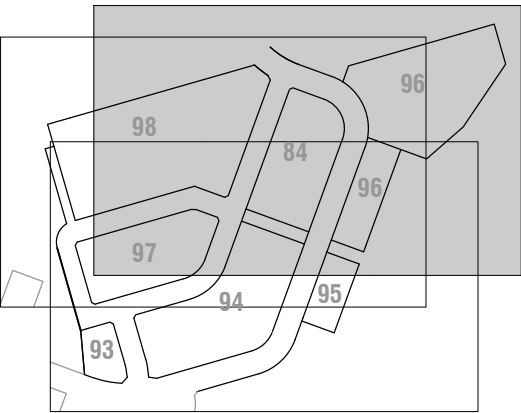
- STAGE BOUNDARY
FINISHED SURFACE MAJOR CONTOURS (1.0m)
FINISHED SURFACE MINOR CONTOURS (0.5m)
FILL
FILL DEPTH (to nearest 100mm)
DRIVEWAY LOCATION
INDICATIVE MULTI UNIT DRIVEWAY LOCATION
3.5m COMBINED EASEMENT (Sewer and Stormwater)
RETAINING WALL

NOTES

THIS PLAN ONLY INDICATES AREA OF FILL OF WHICH THE DEVELOPER AND THEIR AGENTS ARE AWARE. IT HAS NOT BEEN CHECKED BY THE DEVELOPER, AND THE DEVELOPER DOES NOT GUARANTEE ITS ACCURACY. IN NO WAY SHOULD THIS PLAN BE READ AS A CONCLUSIVE STATEMENT OF THE FULL EXTENT OF THE FILL THAT MAY BE FOUND ON THE WHOLE LAND DEPICTED. LESSEES AND PURCHASERS SHOULD MAKE THEIR OWN INQUIRIES IN REGARD TO THE EXACT DRAINAGE, GEOTECHNICAL AND FILL CONDITIONS AFFECTING THEIR BLOCKS.



KEY PLAN



file name: 308664CS040.dwg, input name: CS041, plotted by: Kate Robinson
file location: G:\303308664\City\ACAD\sales\stage 1 & 2, plot date: 30/01/2025 10:12 AM, Sheet: 1 of 2

D	WORKS AS EXECUTED	C.J.C	29-01-25
C	FILL ON BLOCKS UPDATED	C.J.C	29-01-25
B	FILL ON BLOCKS UPDATED	BC	20-09-21
A	ISSUED TO CLIENT	BC	10-05-21
Rev	Amendments	Approved	Date

1:500@ A1
SCALE
1:1000@ A3



© Spiire Australia Pty Ltd All Rights Reserved
This document is produced by Spiire Australia Pty Ltd solely for the benefit of and use by the client in accordance with the terms of the retainer. Spiire Australia Pty Ltd does not and shall not assume any responsibility or liability whatsoever to any third party arising out of any use or reliance by third party on the content of this document.

spiire

Suite 3, Level 1, 243 Northbourne Ave Lyneham 2602
Australian Capital Territory Australia T 61 2 6102 1000
spiire.com.au ABN 55 050 029 635

CAPITAL ESTATE
DEVELOPMENTS

Designed
R. MURDOCK
Authorised
B. CARGILL

Denman
Prospect

Checked
B. CARGILL
Date
10-05-2021

DENMAN PROSPECT 2
STAGES 1 2A & 2B
FILL ON BLOCK PLAN
STAGE 2 - SECTION AS, AU, AT
ACT
CED

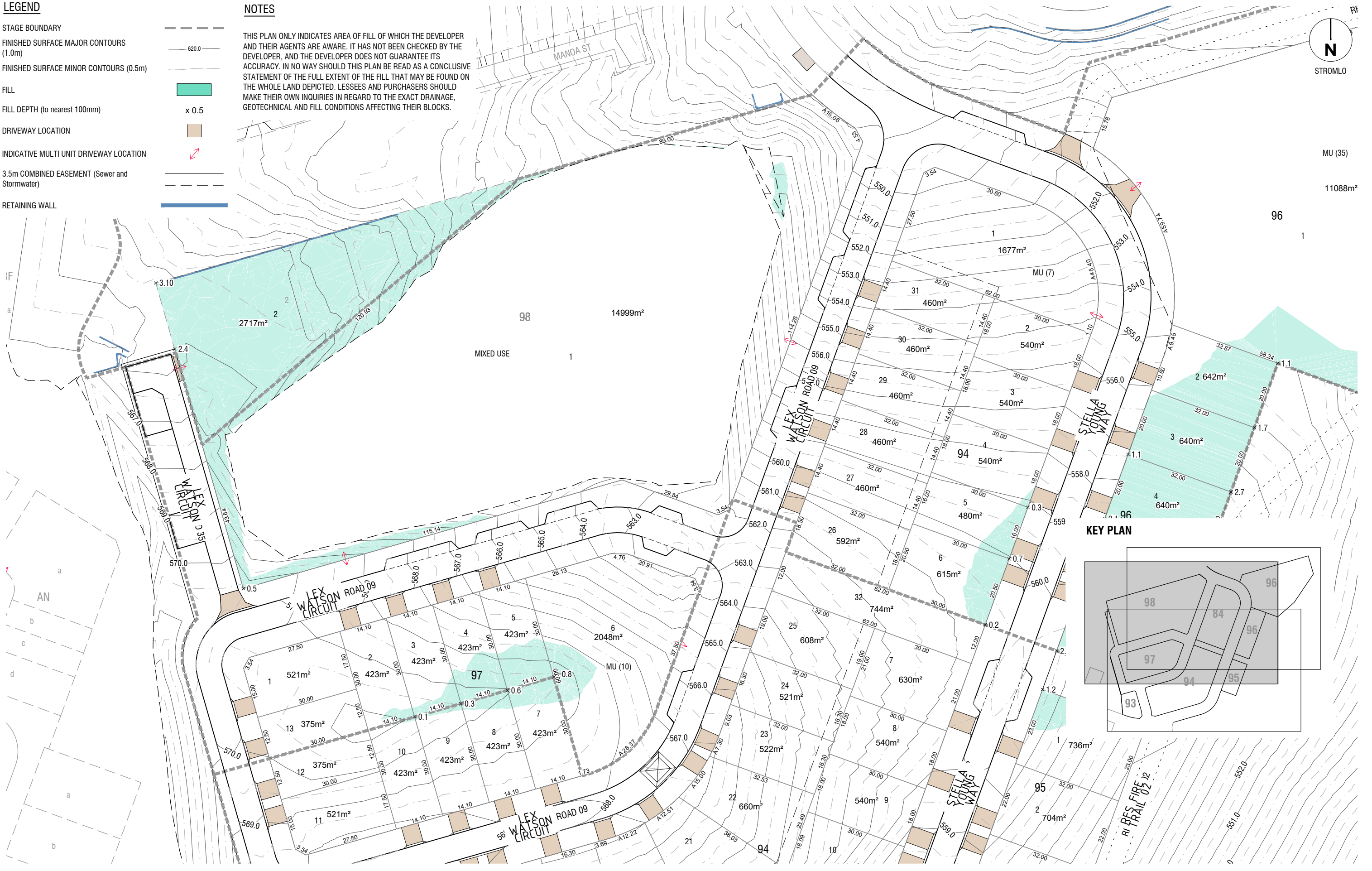
Drg No
308664CS041
Rev
D

LEGEND

- STAGE BOUNDARY
FINISHED SURFACE MAJOR CONTOURS (1.0m)
FINISHED SURFACE MINOR CONTOURS (0.5m)
FILL
FILL DEPTH (to nearest 100mm)
DRIVEWAY LOCATION
INDICATIVE MULTI UNIT DRIVEWAY LOCATION
3.5m COMBINED EASEMENT (Sewer and Stormwater)
RETAINING WALL

NOTES

THIS PLAN ONLY INDICATES AREA OF FILL OF WHICH THE DEVELOPER AND THEIR AGENTS ARE AWARE. IT HAS NOT BEEN CHECKED BY THE DEVELOPER, AND THE DEVELOPER DOES NOT GUARANTEE ITS ACCURACY. IN NO WAY SHOULD THIS PLAN BE READ AS A CONCLUSIVE STATEMENT OF THE FULL EXTENT OF THE FILL THAT MAY BE FOUND ON THE WHOLE LAND DEPICTED. LESSEES AND PURCHASERS SHOULD MAKE THEIR OWN INQUIRIES IN REGARD TO THE EXACT DRAINAGE, GEOTECHNICAL AND FILL CONDITIONS AFFECTING THEIR BLOCKS.



G	WORKS AS EXECUTED	C.J.C	29-01-25
F	FILL ON BLOCKS UPDATED	C.J.C	18-05-23
E	BAL RATINGS UPDATED	C.J.C	28-04-22
D	BLOCK NUMBERS ADJUSTED	C.J.C	20-04-22
C	FILL ON BLOCKS UPDATED	BC	20-09-21
B	AMENDED IN ACCORDANCE WITH CLIENT COMMENTS	BC	27-07-21
A	ISSUED TO CLIENT	BC	10-05-21
Rev	Amendments	Approved	Date

1:500@ A1
SCALE
1:1000@ A3



© Spiire Australia Pty Ltd All Rights Reserved
This document is produced by Spiire Australia Pty Ltd solely for the benefit of and use by the client in accordance with the terms of the retainer. Spiire Australia Pty Ltd does not and shall not assume any responsibility or liability whatsoever to any third party arising out of any use or reliance by third party on the content of this document.

spiire

Suite 3, Level 1, 243 Northbourne Ave Lyneham 2602
Australian Capital Territory Australia T 61 2 6102 1000
spiire.com.au ABN 55 050 029 635

CAPITAL ESTATE
DEVELOPMENTS

Designed
R. MURDOCK
Authorised
B. CARGILL

Denman Prospect

Checked
B. CARGILL
Date
10-05-21

DENMAN PROSPECT 2
STAGES 1 2A & 2B
FILL ON BLOCK PLAN
STAGE 2 - SECTION AR

ACT
CED

Drg No
308664CS042

Rev
G