

ABAX 5 INSTALLATION GUIDE



PARTS ORDERING PROCESS

SECURITY HARNESS

HCMUK Port of Tyne Parts Department

P/N: **JB6280** - SECURITY PLUG HARNESS

Price: Price: €35.93 *excluding shipping*

Contact details: James Park +44 01914308400

jamespark@hitachicm.co.uk

David Pack +44 01914308400

davidpack@hitachicm.co.uk

PARTS REQUIRED

E0A001310 COMM DEVICE (36MTH)



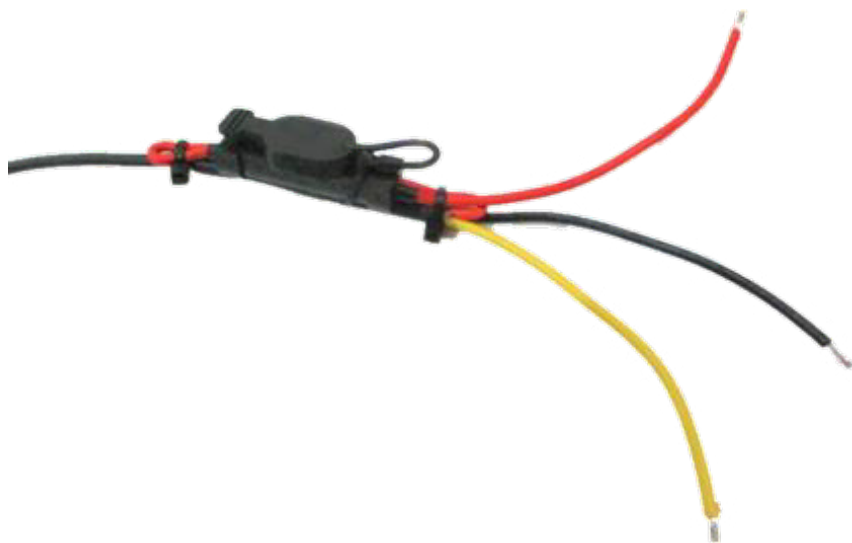
JB6280 SECURITY PLUG HARNESS



STEP 1

1.1

DOUBLE FUSE WIRE BACK AND SECURE WITH CABLE TIES SUPPLIED.



1.2

TIDY WIRING USING HEAT SHRINK SLEEVING.



STEP 2

2.1 FIT 12.7mm HEAT SHRINK SLEEVING



2.2 CONNECT WIRES

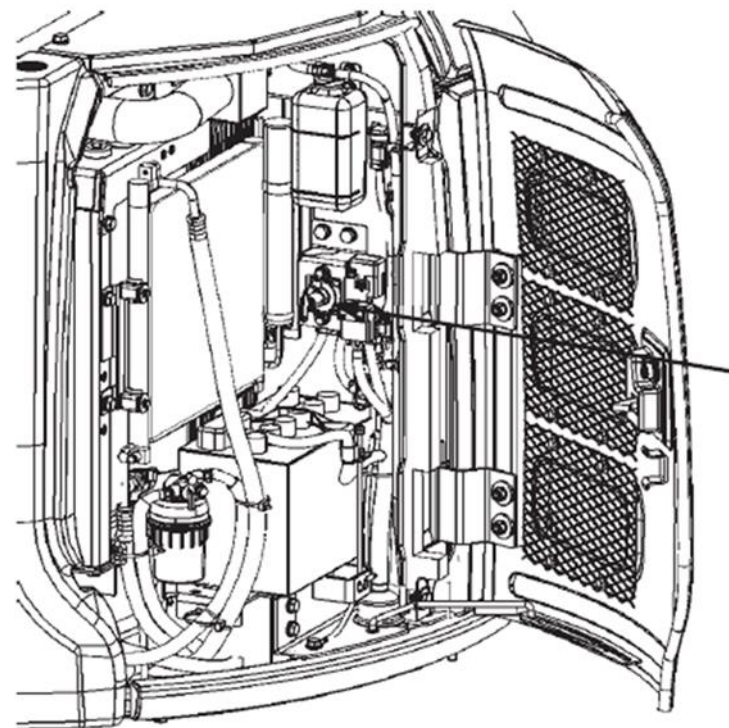


STEP 3

3.1 ASSEMBLY READY TO INSTALL

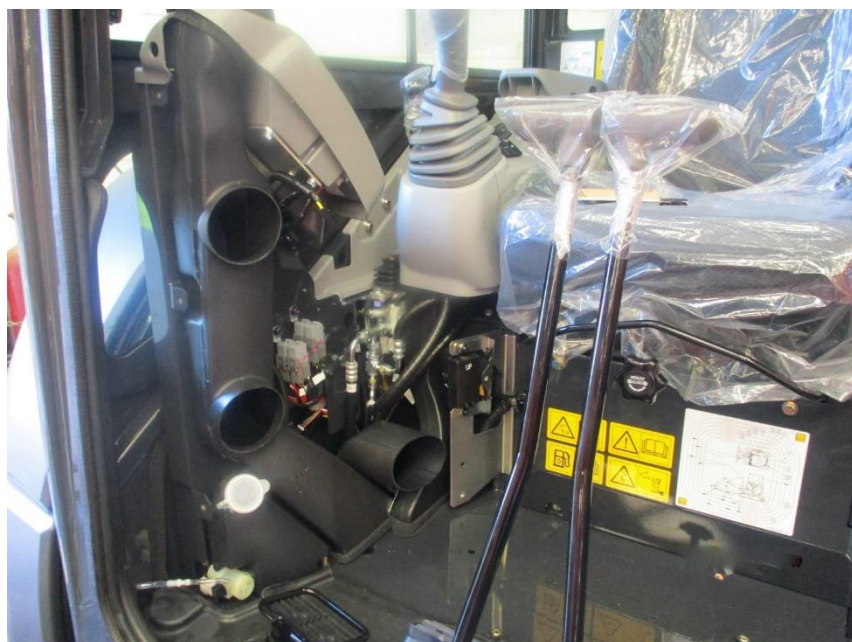


3.2 DISCONNECT BATTERY VIA ISOLATOR SWITCH



STEP 4

4.1 REMOVE DASH PANEL

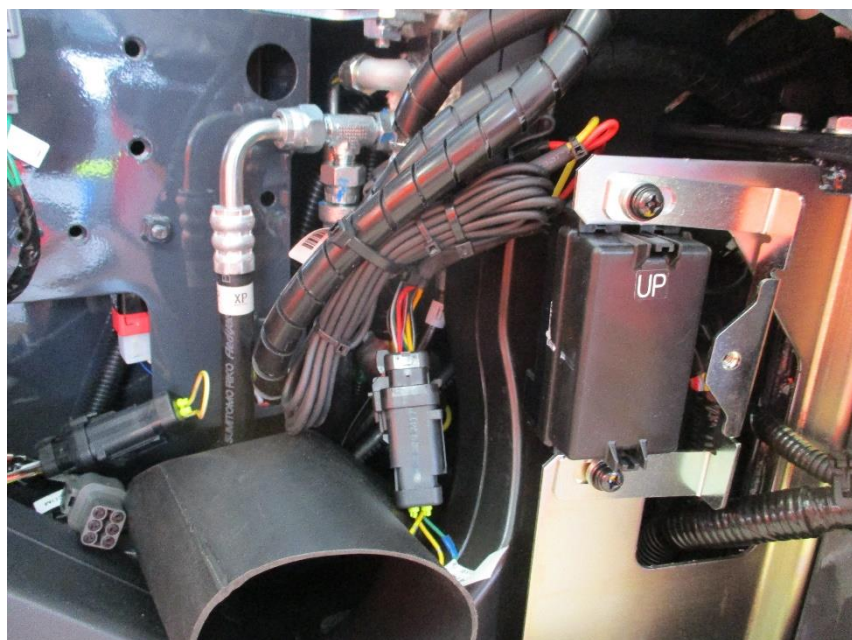


4.2 LOCATE "SECURITY PLUG"



STEP 5

5.1 CONNECT PATCH LEAD



5.2 ATTACH GPS UNIT TO PANEL BEHIND FUSE BOX

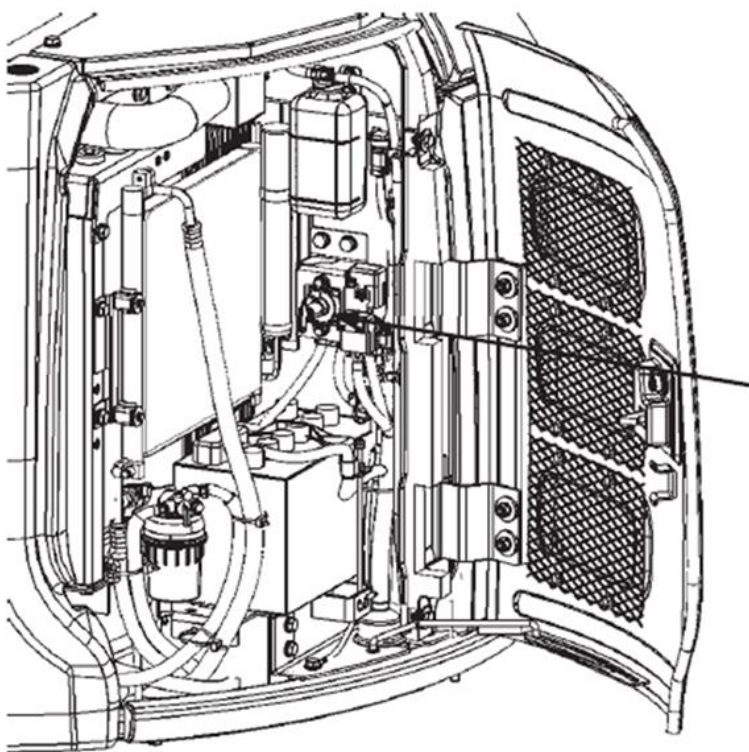
Use surface cleaning wipes provided, prime with 3M Primer



STEP 6

6.1

CONNECT BATTERY VIA ISOLATOR SWITCH.
TAKE NOTE OF THE TIME FOR THE
REGISTRATION FORM.



6.2

CHECK UNIT LED FOR POWER.

"LED WILL BLINK RED FOR 1 MINUTE, AND THEN BLUE FOR UP TO 9 MINUTES. WHEN START UP IS COMPLETE, THE UNIT WILL STOP BLINKING"



STEP 7


AFTER INSTALLATION LOG IN TO ACTIVATE THE UNIT

<https://portal.abax.cloud/>



Welcome to ABAX

Username

 test@abax.com

Password



[Forgot password or username?](#)

☒ Remember me

Log in

