



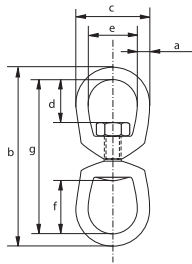
Green Pin® EE Swivel

Swivel with eye-eye end-fitting

- **Material:** high tensile steel, quenched and tempered
- **Safety factor:** MBL equals 5 x WLL
- **Standard:** US Federal Spec. RR-C-271, Type VII, Class 2
- **Finish:** hot dipped galvanized
- **Certification:** 2.1 2.2



G-7713



working load limit	diameter	length outside	width outside	length inside	width inside	length inside	length	weight each
t	a mm	b mm	c mm	d mm	e mm	f mm	g mm	kg
0.39	6	87	32	18	19	27	75	0.1
0.57	8	106	41	21	25	32	90	0.18
1.02	10	129	51	24	32	38	109	0.3
1.6	13	164	64	33	38	51	138	0.6
2.4	16	199	76	40	44	60	167	1
3.3	19	221	89	44	51	67	183	1.82
4.5	22	257	102	52	57	78	213	2.55
5.7	25	295	114	59	64	89	245	4.06
8.2	32	337	143	68	80	94	273	7.43
20.5	38	501	178	102	102	150	425	20.8



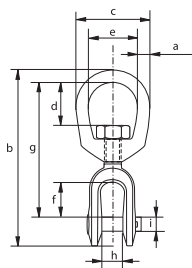
Green Pin® JE Swivel CP

Swivel with jaw-eye end-fitting and cotter pin

- **Material:** high tensile steel, quenched and tempered
- **Safety factor:** MBL equals 5 x WLL
- **Standard:** US Federal Spec. RR-C-271, Type VII, Class 3
- **Finish:** hot dipped galvanized
- **Certification:** 2.1 2.2



G-7723



working load limit	diameter	length	width outside	length inside	width inside	length inside	length	width inside	diameter pin	weight each
t	a mm	b mm	c mm	d mm	e mm	f mm	g mm	h mm	i mm	kg
0.39	6	84	32	18	19	22	67	12	6	0.09
0.57	8	98	41	21	25	22	75	13	8	0.16
1.02	10	121	51	24	32	27	92	16	10	0.32
1.6	13	154	64	33	38	33	114	19	13	0.57
2.4	16	186	76	40	44	38	135	24	16	1.12
3.3	19	211	89	44	51	44	154	29	19	1.76
4.5	22	242	102	52	57	52	178	30	22	2.66
5.7	25	290	114	59	64	71	217	44	29	4.02
8.2	32	329	143	68	80	71	230	52	35	7.14
20.5	38	501	178	106	102	113	364	73	50	24.8