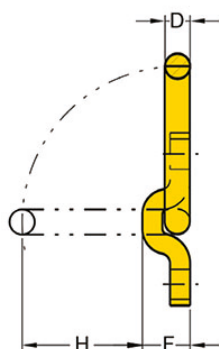
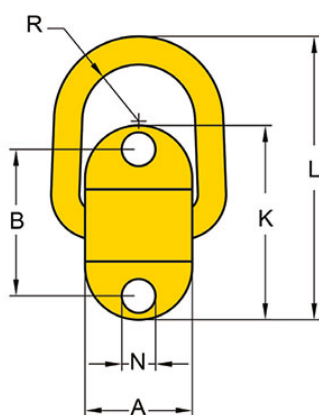


Yoke Grade 8 Bolt-on Lifting Point BS EN 1677-1+2

- Designed with spring, stop at any angle supplied without bolt
- Pivots 180° and allows side load lifting.
- Manufactured from forged alloy steel, quenched and tempered.
- Manufactured and tested in accordance with EN1677-1.
- Load rated parts are 100% magnaflux crack detected.
- Individual forged parts are traceable to Test Certification.
- Supplied without bolts; usage of Grade 10.9 or Grade 12.9 bolts is recommended.
- Proof tested to 2.5 times the WLL.
- Fatigue rated to 1.5 times the WLL.
- Design Factor 5 : 1
- All YOKE lifting points meet or exceed all the requirements of ASME B30.26.

USES

- Designed to be semi-permanent lashing or lifting point
- Suitable for attachment to lifting beams and spreader beams



METRIC SPECIFICATIONS

Part Code	WLL tonnes	A mm	B mm	D mm	F mm	H mm	K mm	L mm	N mm	R mm	Mass Kg
8-058-1T	1.0	50	72	14	27	55	98	139	14	24	0.7
8-058-3T	3.0	58	84	17	33	50	114	144	18	29	1.1
8-058-5T	5.0	64	116	22	43	74	160	203	23	33	2.5

IMPERIAL SPECIFICATIONS

Part Code	WLL lbs.	A inch	B inch	D inch	F inch	H inch	K inch	L inch	N inch	R inch	Mass lbs.
8-058-1T	2200	1.97	2.83	0.55	1.06	2.17	3.86	5.47	0.55	0.94	1.5
8-058-3T	6600	2.28	3.31	0.67	1.30	1.97	4.49	5.67	0.71	1.14	2.4
8-058-5T	11000	2.52	4.57	0.87	1.69	2.91	6.30	7.99	0.91	1.30	5.5

Click here to view video of Yoke Load Attachment Products

<http://www.yoke.net/video/en.asp>