

RGH2

RGH2

FRONT & REAR D SAFETY HARNESS

This two point safety harness has both a rear and chest mounted front attachment point.

The two attachment points extend this harness's working capability. Meaning it can be used for fall protection and restraint situations in either vertical or horizontal planes. The ring connection between the chest and shoulder straps ensures no stress loading when force is applied to the front D ring. High contrast stitching makes inspection easier. The addition of a flexible rear D pad provides additional comfort. The inclusion of easy slide shoulder buckles increases the range of adjustment. The way the harness has been designed minimises the amount of rigid webbing edges. A variety of devices can be used with the harness, but check for suitability.

/ Front & rear attachment point

Accredited to: EN 361:2002

Web material: 45mm RIDGE Protect anti-bacterial polyester*

Max user weight: 140kg (when the max. force on the user/anchor is limited to <6kN)

Fittings: High tensile steel alloy

Weight: 1.1kg standard
1.3kg comfort

* 14 times reduction in bacterial growth, according to ISO 20743:2013 contact with K.pneumoniae, commonly associated with healthcare infections such as E.coli



RGH2

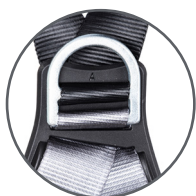
FEATURES



Fully adjustable



Front attachment point



Rear attachment point



Rip stitch indicators



BACK VIEW

SIZE GUIDE

Correct sizing is essential to the safety and comfort of a safety harness. Use this table to help select the appropriate size and feel free to give us a call if you need any assistance.

Size	SMALL	STANDARD	LARGE	X-LARGE
A Chest	36 - 42" 91 - 107cm	42 - 50" 107 - 127cm	50 - 54" 127 - 137cm	54 - 58" 137 - 147cm
B Waist	30 - 36" 76 - 91cm	36 - 44" 91 - 112cm	44 - 48" 112 - 122cm	48 - 52" 122 - 132cm
C Hips	38 - 44" 97 - 112cm	44 - 52" 112 - 132cm	52 - 56" 132 - 142cm	56 - 60" 142 - 152cm

