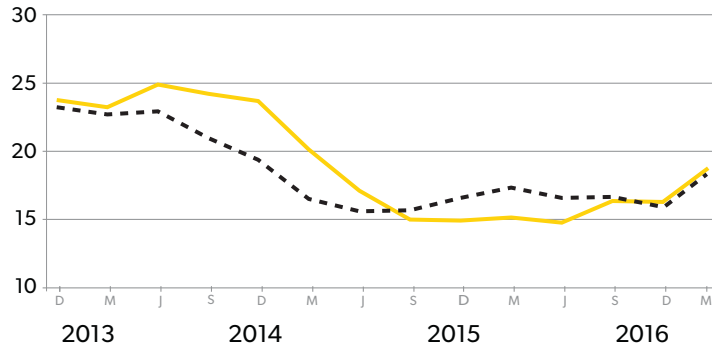


# HOW ARE WE TRACKING?

## RESULTS TO END MARCH 2017

### INJURIES TO WORKERS

RATE OF INJURIES RESULTING IN MORE THAN A WEEK OFF WORK



--- Injuries per 1000 m<sup>3</sup> roundwood  
— Injuries per 1000 workers  
Rolling average last four quarters

### TRENDS & ACTUAL INJURIES

INJURIES RESULTING IN MORE THAN A WEEK OFF WORK

**33** injured in  
March quarter  
**131** injured in  
March year

TRENDS – CHANGE SINCE  
LAST QUARTER

↑ **8.9%**  
rise in injuries  
per 1000 workers

↑ **6.0%**  
rise per 1000m<sup>3</sup>  
roundwood production

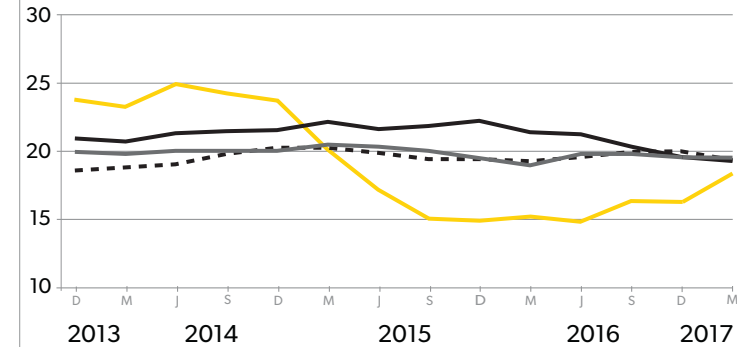
TREND – CHANGE SINCE  
LAST YEAR

↑ **16.7%**  
rise in injuries per  
1000 workers

↓ **3.0%**  
drop per 1000m<sup>3</sup>  
roundwood production

### HOW DO WE COMPARE

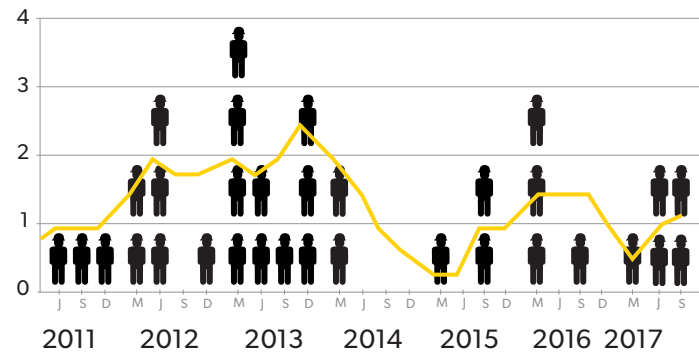
RATE OF INJURIES RESULTING IN MORE THAN A WEEK OFF WORK



— Forestry  
— Agriculture  
--- Manufacturing  
— Construction  
Rolling average last four quarters per 1000 workers

## RESULTS TO END SEPTEMBER 2017

### FATALITIES



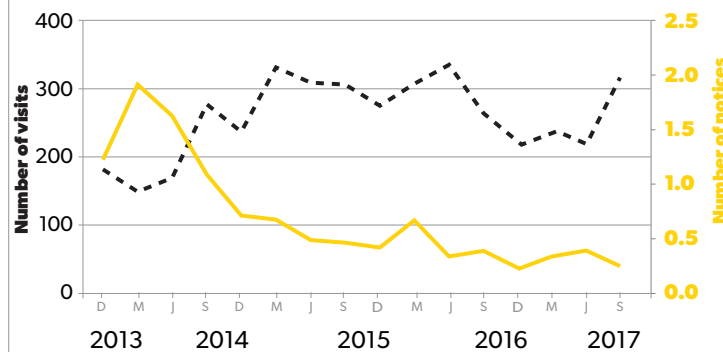
— Fatalities  
— Average Fatalities  
Rolling average last four quarters

**5** fatalities in  
the year  
Sep16 – Sep17



### OUTCOME OF WORKSAFE ACTIVITIES

FORESTRY VISITS AND NOTICES



--- Total forestry visits (LHS)  
— Average number of Improvement, Infringement or Prohibition notices issued for forestry (RHS)

### FISC ACTIVITY

**70** companies  
began contractor  
certification process

**4673** registered to  
get info from  
[www.Safetree.nz](http://www.Safetree.nz)

**127** Worker  
competency  
certificates  
awarded