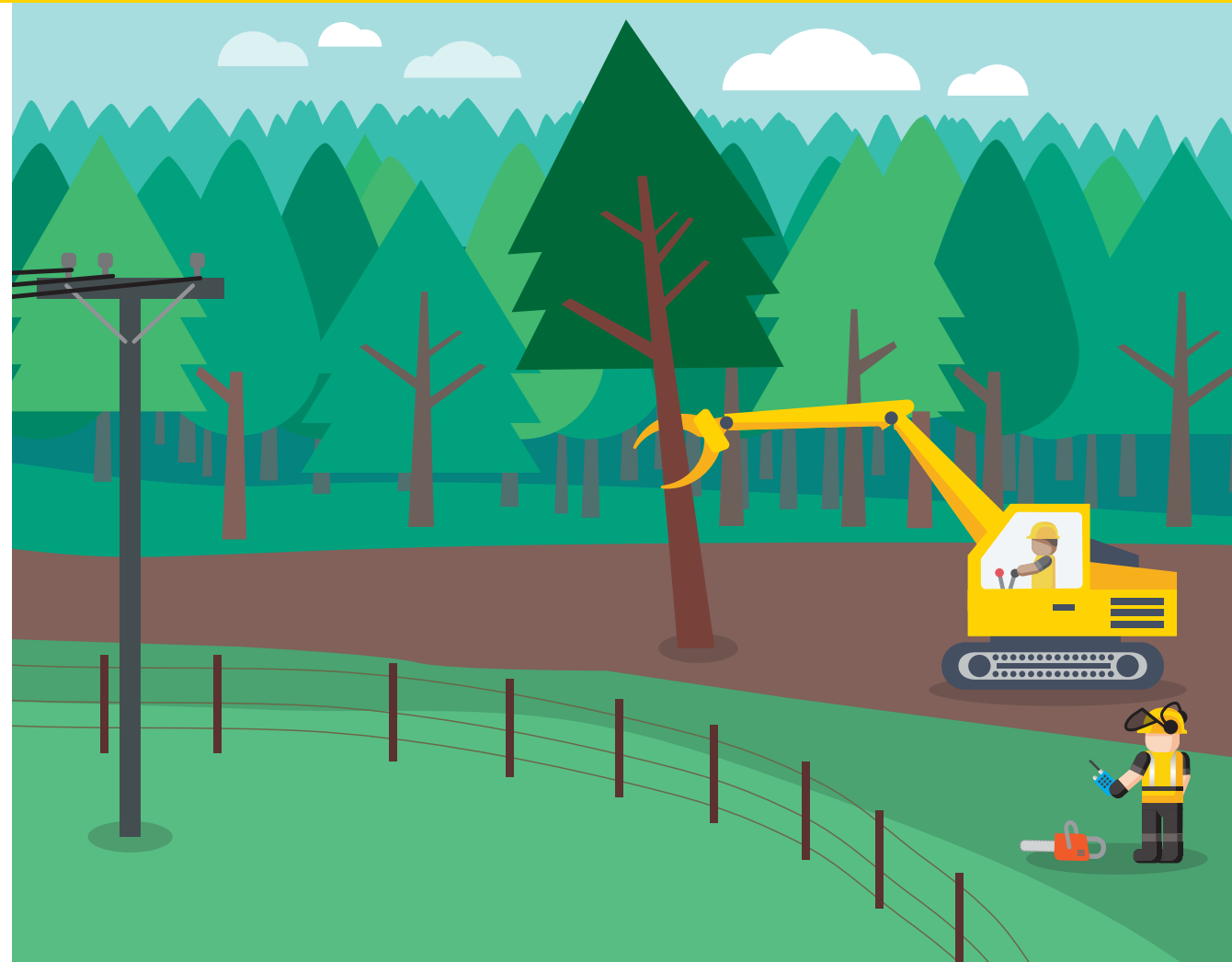


# Machine-assisted tree felling

- Assisting machines may be within one tree length of the feller
- Use the right machine for the job
- The tree feller is in charge



# Machine-assisted tree felling

Use machine assist when a tree is in a hazardous situation, or when its fall must be totally controlled.

## **Machines that are assisting can be used within one tree length of the faller**

- But it can't be in the direct line of where the tree is intended to fall.
- All machines and people not involved in the operation must be at least two tree lengths away from the faller.

## **Use the right machine for the job**

- Plan the operation – decide what kind of machine assist to use.
- The machine must have the right operator protective structures.

## **The tree faller is in charge of the machine-assist operation**

- The faller and machine operator must be trained in machine assist.
- The machine operator must be able to communicate with the faller – ideally by RT.
- The faller must retreat to a safe position before signalling to the machine operator to pull or push the tree.

**Your life is worth more than a tree – leave a tree standing if it's unsafe to fell.**