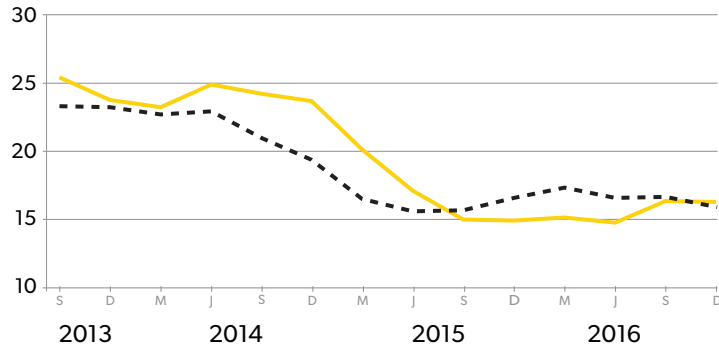


HOW ARE WE TRACKING?

RESULTS TO END DECEMBER 2016

SEVERE INJURIES

RATE OF INJURIES TO WORKERS RESULTING
IN MORE THAN A WEEK OFF WORK



----- Injuries per 1000 m³ roundwood
—— Injuries per 1000 workers
Rolling average last four quarters

TRENDS & ACTUAL INJURIES

27 severely injured
in December quarter

124 severely injured
in December year

TRENDS – CHANGE SINCE
LAST QUARTER

↓ **0.4%**
fall in severe injuries
per 1000 workers

↓ **4.7%**
fall per 1000m³
roundwood production

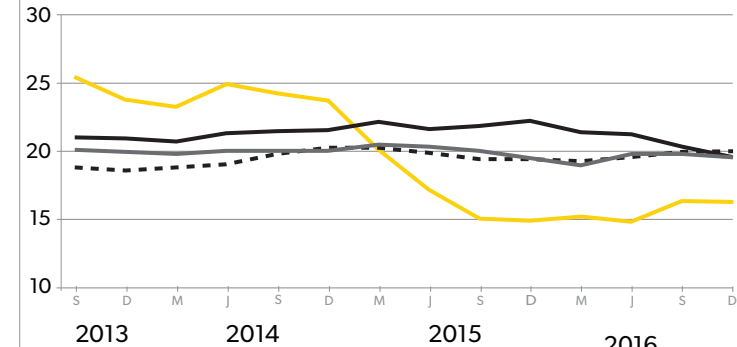
TREND – CHANGE SINCE
LAST YEAR

↑ **10.1%**
rise in severe injuries
per 1000 workers

↓ **3.6%**
drop per 1000m³
roundwood production

HOW DO WE COMPARE

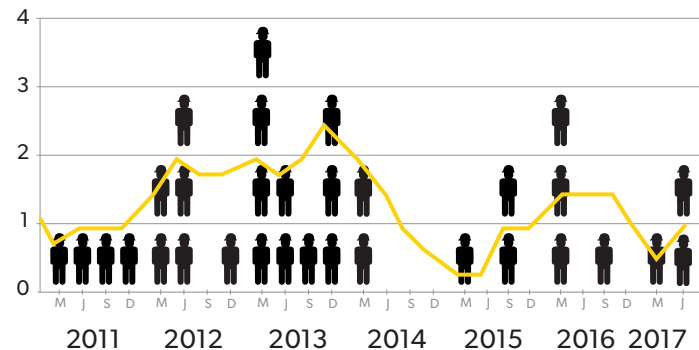
RATE OF INJURIES TO WORKERS RESULTING
IN MORE THAN A WEEK OFF WORK



—— Forestry
----- Manufacturing
—— Agriculture
—— Construction
Rolling average last four quarters per 1000 workers

RESULTS TO END JUNE 2017

FATALITIES



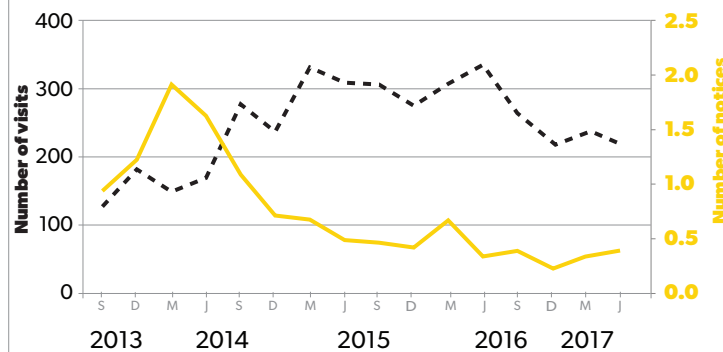
👤 Fatalities
—— Average Fatalities
Rolling average last four quarters

4 fatalities in the
financial year
Jul16 – Jun17



OUTCOME OF WORKSAFE ACTIVITIES

FORESTRY VISITS AND NOTICES



----- Total forestry visits (LHS)
—— Average number of Improvement, Infringement or
Prohibition notices issued for forestry (RHS)

FISC ACTIVITY

35 forestry companies
registered to
contribute data
to IRIS

4763 registered to
get info from
www.Safetree.nz

112 Safetree
Competency
Certificates
Awarded