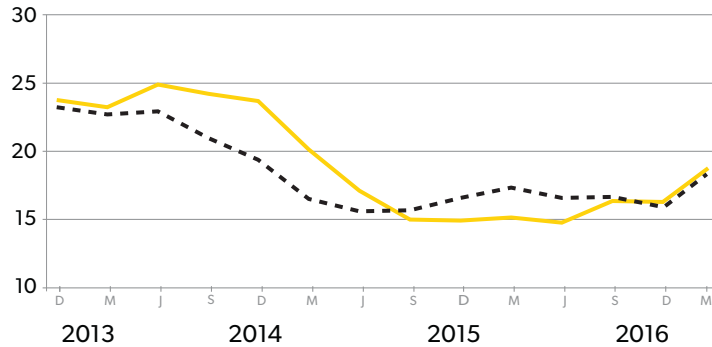


HOW ARE WE TRACKING?

RESULTS TO END MARCH 2017

INJURIES TO WORKERS

RATE OF INJURIES RESULTING IN MORE THAN A WEEK OFF WORK



--- Injuries per 1000 m³ roundwood
— Injuries per 1000 workers
Rolling average last four quarters

TRENDS & ACTUAL INJURIES

INJURIES RESULTING IN MORE THAN A WEEK OFF WORK

33 injured in
March quarter
131 injured in
March year

TRENDS – CHANGE SINCE
LAST QUARTER

↑ **8.9%**
rise in injuries
per 1000 workers

↑ **6.0%**
rise per 1000m³
roundwood production

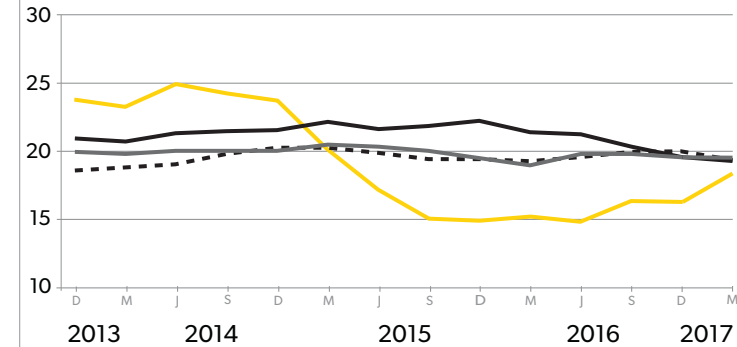
TREND – CHANGE SINCE
LAST YEAR

↑ **16.7%**
rise in injuries per
1000 workers

↓ **3.0%**
drop per 1000m³
roundwood production

HOW DO WE COMPARE

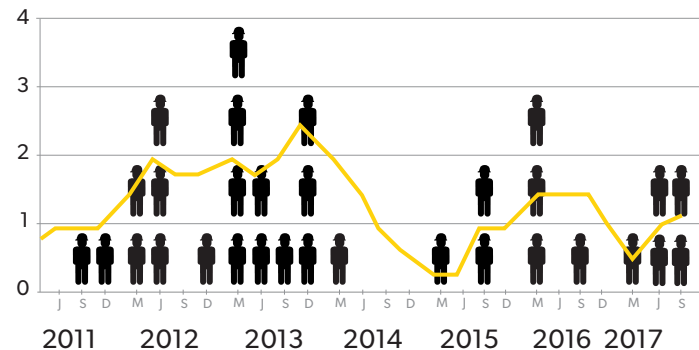
RATE OF INJURIES RESULTING IN MORE THAN A WEEK OFF WORK



— Forestry
— Agriculture
--- Manufacturing
— Construction
Rolling average last four quarters per 1000 workers

RESULTS TO END SEPTEMBER 2017

FATALITIES



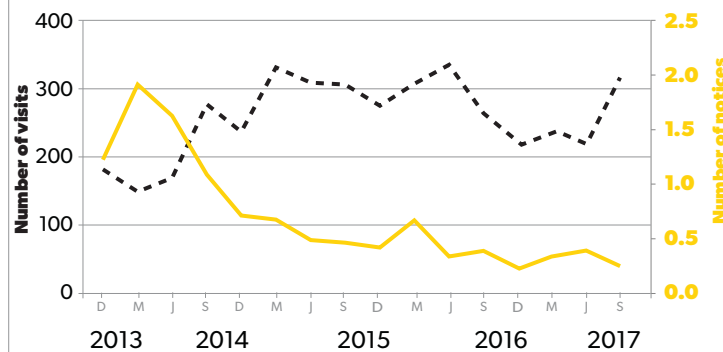
— Fatalities
— Average Fatalities
Rolling average last four quarters

5 fatalities in
the year
Sep16 – Sep17



OUTCOME OF WORKSAFE ACTIVITIES

FORESTRY VISITS AND NOTICES



--- Total forestry visits (LHS)
— Average number of Improvement, Infringement or Prohibition notices issued for forestry (RHS)

FISC ACTIVITY

178 registered
interest in
contractor
certification

4673 registered to
get info from
www.Safetree.nz

127 Worker
competency
certificates
awarded