



SAFETY ALERT

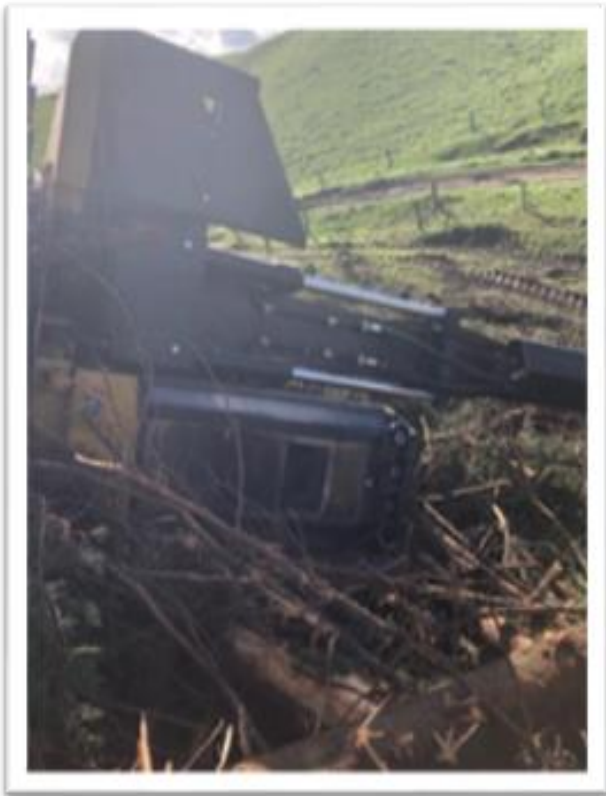
August 2024

MACHINE EMERGENCY EXITS.

The forestry industry has experienced two recent incidents where the excavator has ended up in a position where the operator was unable to exit from the machine.

Getting out of a machine in an emergency is something that requires a plan.

Do you know how you would do it?



Are latches and handles checked to make sure they function on emergency exits?

What equipment is on site to break glass or margard?

Are the emergency exits suitable for the operator of the machine?

Are emergency exits clear from obstacles? Guarding needs to be considered.

If you need to cut margard, how will you keep the operator inside the cab safe? – this can be done with a chainsaw.

What will you do if the operator is injured or unconscious?

What if the machine is on fire, how will this change the plan and the urgency?

Please everyone - Carry out an emergency drill about getting operators out of machines and make a crew plan.