

11



15



## refreshing juices

nutrient powerhouses squeezed and freshly poured

large 6.5 | regular 6

**11 positive**  
pineapple, lime, spinach, cucumber, apple

**14 power**  
spinach, apple, fresh ginger

**15 up-beet**  
beetroot, red pepper, cucumber, fresh ginger, apple

**03 orange (v)**  
orange juice, pure + simple

**05 high five (v)**  
melon, pineapple, lemon, apple, orange juice

**08 tropical (v)**  
mango, apple, orange juice



## desserts

end on something sweet

**135 momo meringue cake (v) 7.7**  
a crisp baked meringue with a light + airy peach sponge, white chocolate frosting + a sweet raspberry sauce at the centre, served with sour cherry compôte

**133 yuzu basque cheesecake (v) 7.7**  
a soft + creamy baked cheesecake with a zesty yuzu twist, drizzled with sweet passion fruit sauce

**131 white chocolate + ginger cheesecake (v) 7.7**  
a creamy cheesecake with a biscuit base + a zingy ginger twist, drizzled with a rich toffee sauce, dusted with ginger icing sugar

**129 smoked chocolate caramel cake (v) 7.9**  
indulgent smoked chocolate mousse layered with salted caramel, crushed biscuits, chocolate fudge brownie and chocolate ganache, served with a scoop of vanilla ice cream

**142 banana katsu 7**  
fresh banana coated in crispy panko breadcrumbs, served with a scoop of vegan miso caramel ice cream drizzled with a rich toffee sauce

133



142



128



## ice cream + sorbet

**140 coconut reika ice cream 6**  
three scoops served with coconut flakes + passion fruit sauce

**128 miso caramel ice cream 5.5**  
three scoops drizzled with toffee sauce, garnished with fresh mint

**150 wagamama juice sorbet 4.5**  
two scoops of fruity sorbet inspired by our iconic tropical + power juices, garnished with fresh mint

## new sweet treats

something small + sweet the perfect coffee pairing

**148 raspberry snow cake (v) 4.7**

**146 chocolate brownie (v) 4**

**144 lemon yuzu muffin (v) 3.7**

148



for our full allergen + intolerance information, please see our main menu

MAR25-MSP-DRINKS-01

(v) vegetarian ■ vegan new new



## coffee by GRIND

smooth and rich, our house blend is ethically sourced and then roasted in london. just ask if you'd like it decaf

**834 flat white 3.4**  
oat or semi-skimmed milk

**835 latte 3.4**  
oat or semi-skimmed milk

**837 cappuccino 3.4**  
oat or semi-skimmed milk

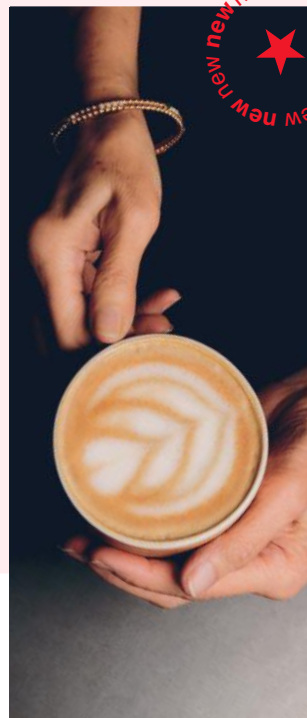
**833 americano 3.2**  
served black, with oat or semi-skimmed milk

**832 double espresso 2.5**

**840 iced latte 3.4**  
oat or semi-skimmed milk

**844 matcha latte 3.7**  
ceremonial grade matcha by **JENJI**, mixed with hot oat or semi-skimmed milk for a warm + earthy flavour

**912 cococino free**  
warm frothed milk, with oat or semi-skimmed milk



780



## loose leaf tea

**775 new golden leaf breakfast tea 2.5**  
strong + earthy black tea, served with semi-skimmed milk on the side or swap to oat to make vegan

**778 fresh lemon + ginger 3**  
fragrant warming tea with fresh ginger + a zesty ginger syrup

**780 pink peppercorn + strawberry rooibos 3.5**  
mildly spiced + fruity flavoured tea, naturally caffeine free

**776 japanese cherry 3.5**  
sweet cherry flavoured green tea infused with rose petals

**784 fresh mint 2.5**  
fresh mint leaves, pure + simple

**771 green tea free**  
warm your soul with our free green tea



drinks + desserts

wagamama



## soulful spirits + cocktails

### new classic cocktails

- 631 espresso martini 9.5**  
smooth craft vodka with rich cold brew + coffee liqueur
- 637 negroni 9.2**  
handcrafted gin with amaro + vermouth for a punchy floral flavour
- 524 piña colada 9.2**  
vibrant rum with silky-sweet pineapple + creamy coconut
- 635 passion fruit paloma 9.2**  
smooth tequila, tropical passion fruit and a splash of tangy yuzu. finished with a slice of grapefruit and a strawberry + salt rim
- 639 aperol spritz 8.7**  
sweet + crisp organic prosecco poured over aperol. topped with soda + a fresh orange slice



## beer + cider

- 618 new beavertown neck oil 4.3% VOL. 330ml 6.5**  
session ipa
  - 608 jubel peach lager 4% VOL. 330ml 5**  
craft lager cut with fruit to radiate refreshment. served over ice
  - asahi 5% VOL.**
  - 602 660ml 8 / 601 330ml 5**
  - 527 midori biru 7**  
midori, yuzu and asahi. served over ice
  - 605 sxollie cider 4.5% VOL. 330ml 5.5**  
sweet, crisp and made purely with green apples
  - 607 strawberry x sxollie cider 4.5% VOL. 6**  
green apple sxollie cider with sweet strawberry syrup
- \* no / low
- 617 new beavertown lazer crush 0.3% VOL. 330ml 5.2**  
alcohol-free ipa
  - 600 asahi zero 0.0% VOL. 330ml 5**  
alcohol-free lager



## spirits + mixers

your choice of premium mixer served over a single or double pour spirit

- 501 haku vodka 50ml 10.5 25ml 7.2**
- 503 roku gin 50ml 11.5 25ml 7.7**
- 505 tanqueray no. ten gin 50ml 12.5 25ml 8**
- 507 toki whiskey 50ml 11.5 25ml 7.7**
- 509 bambu rum 50ml 12.5 25ml 8**

## no / low

soft drinks with a twist

- 686 iced matcha + strawberry latte 4.5**  
ceremonial grade matcha by **JENPI**. served with oat over ice
- 642 new spicy mindful mary 6.2**  
our take on an alcohol-free favourite. tomato juice served with soy, teriyaki and spices. garnished with lime, fresh cucumber and a chilli + lime salt rim
- 686 new spiced plum + orange (v) 5.7**  
spicy plum swirled with fiery ginger and sweet orange juice. finished with a chilli + lime salt rim
- 684 yuzu + lychee tonic 6.2**  
zesty yuzu + lychee purée swirled with light or regular double dutch tonic water. garnished with a fresh orange slice
- 683 cherry blossom lemonade 5.2**  
refreshing cherry blossom + cloudy lemon syrup mixed with soda. finished with a fragrant sprinkle of dried rose petals
- 689 ginger no-jito 6.2**  
zingy, cold-pressed ginger + coriander seed syrup topped with sparkling soda, fresh mint and a slice of lime



## asian-inspired cocktails

- 518 thai chilli margarita 9.2**  
smooth tequila balanced with a chilli liqueur + sweet coconut syrup. elegantly finished with a chilli + lime salt rim, fresh lime and bird's eye chilli
- 622 strawberry shiso mojito 9.7**  
fragrant shiso vodka balanced with rum + strawberry purée. finished with soda + fresh mint
- 548 tamarind sour 9.2**  
a playful fusion of vodka, rum and passion fruit spiced with lime, lemongrass and tamarind. topped with a fried rice noodle
- 448 lychee blush sangria 8.5**  
refreshing yuzu + lychee purée paired with an elegant pink pinot blush. garnished with grapefruit + orange
- 581 new breakfast in tokyo 9.5**  
sweet + zesty papaya gin with blood orange flavours and a yuzu sherbet kick. topped with organic prosecco + a delicate edible flower
- 640 new spicy mary 9.5**  
our take on a classic. haku vodka served with tomato juice, soy, teriyaki and spices. garnished with lime, fresh cucumber and a chilli + lime salt rim

## wagamama g+ts

your choice of light or regular double dutch tonic water served over a single or double pour of japanese craft roku gin

- 508 yuzu lychee g+t**  
sophisticated + citrusy. swirled with yuzu + lychee purée. garnished with orange  
50ml 11.2 25ml 8.7
- 514 sakura pink g+t**  
delicate + floral. sweetened with a cherry blossom syrup. garnished with fresh lime + a sprinkle of dried rose petals  
50ml 11.2 25ml 8.7



## wine

expertly-selected, premium wines perfect on their own or paired with our bowls

|       |       |       |
|-------|-------|-------|
|       |       |       |
| 750ml | 250ml | 175ml |

### red

- 438 new pinot noir (v) 29 10.5 8.5**  
light to medium-bodied, silky. chile 13% VOL.
- 440 new carignan 27 10 8.5**  
medium-bodied. smooth. france 13% VOL.

### white

- 409 pinot grigio 25 9 7.5**  
light, easy-sipping. italy 11% VOL.
- 410 new marlborough sauvignon blanc 28 10.5 8.5**  
fresh. crisp. new zealand 13% VOL.

### rosé

- 449 pinot grigio blush 25 9 7.5**  
light. dry. italy 11% VOL.

### orange

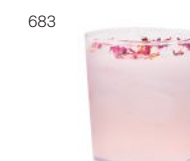
- 456 new orange genora 31.5 11.5 9**  
an organic wine with a light orange hue created naturally during the grapes' fermentation. france 13% VOL.

### sparkling

- 458 new sparkling fitz 750ml 125ml 39 8.5**  
fresh + light. england's first charmant sparkling wine. for all occasions. england 12% VOL.
- 460 organic prosecco 31 7**  
italy 10.5% VOL.

## sake

- 480 mio sparkling 5% VOL. 150ml 8.5**  
refreshingly fruity with a gentle fizz
- 482 kaori 14.5% VOL. 125ml 8.5**  
sweet + rounded with a crisp aroma, reminiscent of melon + banana



## soft drinks

- 714 cloudy lemonade large 4.5 / reg 3.9**
- 710 peach iced tea large 4.5 / reg 3.9**
- still water**
- 703 large 5 / 701 reg 3**
- sparkling water**
- 704 large 5 / 702 reg 3**
- 705 coke 4**
- 705 coke zero / diet coke 4**
- 708 sprite zero 4**
- 712 new ginger beer 4**  
double dutch
- 709 new lemonade 4**  
double dutch