



wagamama



summer 2025

summer 2025

hoki coconut kare

fresh is our thing



whether you order a comforting ramen or a brand new bowl, all our food is freshly prepared in our open kitchens and brought straight to your bench as soon as it's ready

join soul club



sign up to our soul club app to collect stamps for free food and so much more

try something new

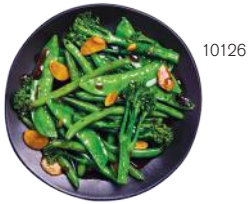


order the new 'build your own' donburi. your choice of rice, protein and your favourite wagamama flavours. from mild teriyaki to spicy firecracker

non-gluten menu

our non-gluten menu features dishes that do not contain gluten in their ingredients, either remaining true to the original recipes or subtly modified to suit a non-gluten diet

small plates



lighter bites

flavour-packed snacking

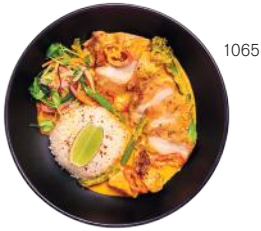
10104 edamame 4.9
salt or chilli + garlic salt

10215 rainbow pickles 3
pickled mooli, cucumber, aubergine, turnip

10126 wok-fried greens 6
cooked in a flavourful garlic + soy sauce

1096 lollipop prawn kushiyaki 8
three grilled skewers in lemongrass + chilli

the main event



curries

from mild + comforting to aromatic + spicy

go big on your protein
chicken +£3.5 prawn +£3.5 tofu +£2

coconut kare
rich + citrusy, tenderstem broccoli, fine beans, squash, asian slaw, pea shoots, white rice
1067 hoki fish 17.5
1065 chicken thigh 16.5
raisukaree
mild + warming, coconut curry sauce, mangetout, peppers, onion, chilli, sesame seeds, white rice
1079 prawn 16.5
1075 chicken 15.8
1076 tofu 13.3



ramen + pho

rich ramen + fragrant pho noodle soups

go big on your protein
chicken +£3.5

1020 grilled chicken 14.5
marinated chicken, rice noodles, rich chicken broth, pea shoots, spring onion 441 kcal
pho **new**
clear yuzu broth + konjac noodles, red pepper, beansprouts, spring onion, fresh herbs
1037 hoki fish 15.5
1036 chicken thigh 15
1038 king oyster mushroom 14.5



donburi

protein topped rice bowls full of flavour

build your own rice bowl
from £10

1 start with a protein (regular or go big)
tofu (vg) 10 +£2
chicken thigh 13.5 +£3.5
beef brisket 15 +£5
prawn 15 +£5
duck 17 +£7
chicken + prawn 14.3 +£4.3

2 bring on the flavour (vg)
medium - yuzu | sweet chilli
spicy - gochujang

3 choose your rice (vg)
sticky rice **brown rice**
white rice **cauliflower 'rice'** + £1

4 make it your own
all bowls come with peashoots
pick 3 veg (vg)
pickled cucumber | edamame beans
beetroot | spring onion
asian slaw | red onion
radish | carrot
want more veg? add for + £1 each
pick 1 garnish (vg)
coriander | sesame seeds
red chilli | crispy onions
red pepper powder
+ £1 each
kimchee (vg) | tea-stained egg (v)
fried egg (v) | pickled ginger (vg)
snow onion slaw (vg)

10230 shu's 'shiok' chicken 14.5
shu han lee collaboration
turmeric + ginger chicken, pickled slaw, coriander, chilli, coconut flakes, coconut + lemongrass rice

dessert



ice cream + sorbet

10150 wagamama juice sorbet 4.5
two scoops of fruity sorbet inspired by our tropical + power juices

10140 coconut reika ice cream 6
three scoops with coconut flakes + passion fruit sauce

10128 miso caramel ice cream 5.5
three scoops with toffee sauce

a little something sweet

the perfect pairing to your tea or coffee

10146 chocolate brownie (v) 4
made using gluten-free flour

juices



freshly made juices

nutrient powerhouses squeezed and freshly poured

large 6.5 | regular 5.9

06 kickstart **new**
strawberry, apple, mint, lemon

11 positive
pineapple, lime, spinach, cucumber, apple

14 power
spinach, apple, fresh ginger

05 high five (v)
melon, pineapple, lemon, apple, orange juice

08 tropical (v)
mango, apple, orange juice

coffee + tea

coffee by GRIND

all coffee is ethically sourced and roasted in london. served with whole milk
oat (vg), semi-skimmed milk and decaf available

834 flat white (v) 3.3

835 latte (v) 3.3

837 cappuccino (v) 3.3

833 americano (v) 3
served black or with whole milk

832 double espresso 2.5

840 iced latte (v) 3.3
option to sweeten with sugar cane syrup

844 matcha latte (v) 3.8
ceremonial grade matcha with hot whole milk

744 iced matcha + strawberry latte 4.8
ceremonial grade matcha with oat



tea

778 fresh lemon + ginger 3

776 japanese cherry 3.5
flavoured green tea infused with rose petals

784 fresh mint 2.5

775 golden leaf breakfast tea (v) 2.5
black tea, served with whole milk, oat (vg) and semi-skimmed milk available

771 green tea free



teppanyaki

sizzling noodles straight from the grill

go big on your protein
chicken + prawn +£4.3

1048 chicken + prawn pad thai 14.9
rice noodles, marinated chicken, prawns, egg, beansprouts, leek, chilli, fresh + crispy onions, mint



salads

aromatic, crunchy and full of freshness

1085 pad thai salad **new** 14.5
coconut chicken + prawns, dressed mixed leaves, edamame beans, wakame, radish, crispy onions, mint, konjac noodles

sweet chilli salad **new**
lettuce, red pepper, mangetout, tenderstem broccoli and red onion in sweet chilli + tamari sauce, red chilli, crispy onions
1086 chicken 13.5
1083 tofu 12.5

cocktails

signature sips

| | | |
|---|--------------------------------|-----|
| 622 | strawberry shiso mojito | 9.5 |
| shiso vodka, rum and strawberry purée. soda. fresh mint | | |
| 518 | thai chilli margarita | 9 |
| smooth tequila, chilli liqueur and coconut syrup. lime. bird's eye chilli. chilli + lime salt rim | | |
| 548 | pad thai sour | 9 |
| vodka, rum and passion fruit. lime. lemongrass. tamarind. fried rice noodle | | |
| 448 | lychee blush sangria | 8 |
| yuzu + lychee cordial paired with pink pinot blush. grapefruit. orange | | |
| 581 | breakfast in tokyo | 9.5 |
| papaya gin, blood orange flavours and yuzu sherbet. organic prosecco. delicate edible flower | | |
| 635 | passion fruit paloma | 9 |
| smooth tequila, passion fruit and tangy yuzu. grapefruit. strawberry + salt rim | | |
| 639 | aperol spritz | 8.5 |
| organic prosecco poured over aperol. soda. fresh orange | | |



622

g+ts

japanese craft roku gin with light or regular double dutch tonic water

| | | | |
|--|------------------------|---------|----------|
| 508 | yuzu lychee g+t | 50ml 12 | 25ml 8.8 |
| sophisticated + citrusy. yuzu + lychee cordial. orange | | | |
| 514 | sakura pink g+t | 50ml 12 | 25ml 8.8 |
| delicate + floral. cherry blossom syrup. fresh lime. dried rose petals | | | |



514

spirits + mixers

your choice of premium mixer served over a single or double pour spirit

| | | | |
|-----|------------------------------|-----------|----------|
| 501 | haku vodka | 50ml 10.3 | 25ml 7 |
| 503 | roku gin | 50ml 11.3 | 25ml 7.5 |
| 505 | tanqueray no. ten gin | 50ml 12 | 25ml 8 |
| 507 | toki whisky | 50ml 11.3 | 25ml 7.5 |
| 509 | bumbu rum | 50ml 12 | 25ml 8 |

crafted by MOTH:

london specialist cocktail makers

| | | |
|---|-------------------------|---|
| 631 | espresso martini | 9 |
| smooth craft vodka with rich cold brew + coffee liqueur | | |
| 637 | negroni | 9 |
| handcrafted gin with amaro + vermouth for a punchy floral flavour | | |
| 524 | pina colada | 9 |
| vibrant rum with silky-sweet pineapple + creamy coconut | | |



688

alcohol free

| | | |
|---|---|-----|
| 687 | strawberry spritz new | 6.8 |
| strawberry purée + botanical cordial. ice. soda water. dried lemon slice | | |
| 688 | saffron picante new | 6.8 |
| lime + saffron. sweet agave. chilli. ice. soda water. bird's eye chilli. salt rim | | |
| 684 | yuzu + lychee tonic | 6 |
| yuzu + lychee cordial with light or regular double dutch tonic water. orange | | |
| 689 | ginger no-jito | 6 |
| cold-pressed ginger + coriander seed syrup with sparkling soda. mint. lime | | |

beer + cider

| | | |
|---|-----------------------------------|-----|
| 608 | jubel peach lager | 5 |
| 4% vol. 330ml. craft lager cut with fruit to refresh. served over ice | | |
| 605 | sxollie cider | 5.5 |
| 4.5% vol. 330ml. sweet, crisp and made purely with green apples | | |
| 607 | sxollie cider x strawberry | 6.5 |
| 4.5% vol. green apple sxollie cider with sweet strawberry syrup | | |



607

wine



red

| | | | | |
|--------------------------------------|---|------|-----|-----|
| 438 | pinot noir (v) 13% vol. | 27.8 | 10 | 8.8 |
| light to medium-bodied. silky. chile | | | | |
| 440 | carignan 13% vol. | 25.5 | 9.8 | 8.8 |
| medium-bodied. smooth. france | | | | |
| white | | | | |
| 409 | pinot grigio 11% vol. | 23.8 | 8.8 | 7.3 |
| light. easy-sipping. italy | | | | |
| 410 | marlborough sauvignon blanc 13% vol. | 27.5 | 9.8 | 8.5 |
| fresh. crisp. new zealand | | | | |

rosé

| | | | | |
|-------------------|------------------------------------|------|---|-----|
| 449 | pinot grigio blush 11% vol. | 24.3 | 9 | 7.5 |
| light. dry. italy | | | | |

orange

| | | | | |
|---|-------------------------------|------|----|---|
| 456 | orange genora 13% vol. | 31.5 | 11 | 9 |
| an organic wine with a light orange hue created naturally during the grapes' fermentation. france | | | | |
| all wine available in 125ml | | | | |

sparkling

| | | | |
|-------|------------------------------------|----|-----|
| 460 | organic prosecco 10.5% vol. | 30 | 6.5 |
| italy | | | |



686

soft drinks

| | | |
|--|---------------------------------|--------------------------|
| 686 | spiced plum + orange (v) | 5.5 |
| plum, ginger and orange juice. chilli + lime salt rim | | |
| 683 | cherry blossom lemonade | 5.3 |
| cherry blossom + cloudy lemon syrup with soda. dried rose petals | | |
| 714 | cloudy lemonade | large 4.5 regular 4.3 |
| 710 | peach iced tea | large 4.5 regular 4.3 |
| 705 | coke | 3.9 |
| 705 | coke zero / diet coke | 3.9 |
| 708 | sprite zero | 3.9 |
| 709 | lemonade double dutch | 3.8 |
| 712 | ginger beer double dutch | 3.8 |
| 703 | 701 still water | large 5 regular 3 |
| 704 | 702 sparkling water | large 5 regular 3 |