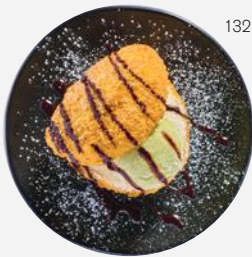


desserts



132

- new

bao nut

panko bao filled with a scoop of ice cream + sauce

6
- 130

ube + cherry
- 132

matcha + chocolate
- 134

miso caramel + toffee

- 143

miso caramel banana bread (v)

toffee topping, vanilla ice cream, toffee sauce

6.5

- 142

banana katsu

fresh panko banana, vegan miso caramel ice cream, toffee sauce

7

- 131

white chocolate + ginger cheesecake (v)

creamy cheesecake with a biscuit base + a zingy ginger twist, toffee sauce, ginger icing sugar

7.8

- 129

smoked chocolate caramel cake (v)

smoked chocolate mousse, salted caramel, crushed biscuits, chocolate fudge brownie, chocolate ganache, vanilla ice cream

7.8



142

ice cream

- 746

new

popcorn affogato (v)

vanilla ice cream, condensed milk, hot espresso

4.5

- 140

coconut reika ice cream

three scoops with coconut flakes + passion fruit sauce

6

- 128

miso caramel ice cream

three scoops with toffee sauce

5.5



148

a little something sweet

the perfect tea or coffee pairing

- 148

raspberry snow cake (v)

4.5
- 146

chocolate brownie (v)

4
- 144

lemon yuzu muffin (v)

3.5

soul  club



download our soul club app now for **free food**

drinks +
desserts

★
wagamama

(v) vegetarian  (vg) vegan

for our full allergen + intolerance information, please see our main menu

NAT-DRINKS-OCT25-01

juices



11

nutrient powerhouses
squeezed and freshly poured
large 6.3 | regular 5.9

06 kickstart
strawberry. apple. mint. lemon

11 positive
pineapple. lime. spinach.
cucumber. apple

14 power
spinach. apple. fresh ginger

05 high five (v)
melon. pineapple. lemon. apple.
orange juice

08 tropical (v)
mango. apple. orange juice

soft drinks

686 spiced plum + orange (v) 5.5
plum, ginger and orange juice.
chilli + lime salt rim

683 cherry blossom
lemonade 5.3
cherry blossom + cloudy lemon syrup
with soda. dried rose petals

714 cloudy lemonade
large 4.5 regular 4.3

710 peach iced tea
large 4.5 regular 4.3

705 coke 3.9

705 coke zero / diet coke 3.9

708 sprite zero 3.9

712 ginger beer 3.8
double dutch

703 701 still water
large 5 regular 3

704 702 sparkling water
large 5 regular 3



683

beer + cider

602 601 asahi 5% vol. 660ml. 8
330ml. 5

527 asahi x midori biru 7
midori, yuzu and asahi. served over ice

621 new camden pale ale 5
4% vol. 330ml. hoppy + citrusy with
a refreshing finish

608 jubel peach lager 4% vol. 5
330ml. craft lager cut with fruit to refresh.
served over ice

605 sxollie cider 4.5% vol. 5.5
330ml. sweet, crisp and made purely
with green apples

no + low
600 asahi zero 0.0% vol. 5
330ml. alcohol-free lager



608



605

cocktails

signature sips

622 strawberry shiso mojito 9.5
shiso vodka, rum and strawberry purée.
soda. fresh mint

518 thai chilli margarita 9
smooth tequila, chilli liqueur and coconut
syrup. lime, bird's eye chilli. chilli + lime
salt rim

448 lychee blush sangria 8
yuzu + lychee cordial paired with pink
pinot blush. grapefruit. orange

635 passion fruit paloma 9
smooth tequila, passion fruit and tangy
yuzu. grapefruit. strawberry + salt rim

g+ts

japanese craft roku gin with light
or regular double dutch tonic water

508 yuzu lychee g+t 50ml 12 25ml 8.8
sophisticated + citrusy.
yuzu + lychee cordial. orange

514 sakura pink g+t 50ml 12 25ml 8.8
delicate + floral. cherry blossom syrup.
fresh lime. dried rose petals

504 roku g+t 50ml 11 25ml 8
crisp + aromatic. a classic with lime + ginger



448



689

alcohol free

687 strawberry spritz 6.8
strawberry purée + botanical cordial.
ice. soda water. lemon

688 saffron picante 6.8
lime + saffron. sweet agave, chilli. ice.
soda water. bird's eye chilli. salt rim

684 yuzu + lychee tonic 6
yuzu + lychee cordial with light or regular
double dutch tonic water. orange

689 ginger no-jito 6
cold-pressed ginger + coriander seed syrup
with sparkling soda. mint. lime

coffee
by GRIND

all coffee is ethically sourced
and roasted in london.
served with whole milk (v)

oat (vg), semi-skimmed milk
and decaf available

834 flat white (v) 3.3

835 latte (v) 3.3

837 cappuccino (v) 3.3

833 americano (v) 3
served black or with whole milk

832 double espresso 2.5

840 iced latte (v) 3.3
sweeten with sugar cane syrup

744 iced matcha
+ strawberry latte 4.8
ceremonial grade matcha
with oat

wine + sake

red 750ml 250ml 175ml
438 pinot noir (v) 27.8 10 8.8
13% vol. chile
light to medium-bodied. silky

446 new merlot 23.8 8.8 7.3
12% vol. chile
smooth. medium-bodied

white
409 pinot grigio 23.8 8.8 7.3
11% vol. italy
light. easy-sipping

410 marlborough
sauvignon blanc 27.5 9.8 8.5
13% vol. new zealand
fresh. crisp

rosé
449 pinot
grigio blush 24.3 9 7.5
11% vol. italy
light. dry

all wine available in 125ml

sparkling 750ml 125ml
460 organic prosecco 30 6.5
10.5% vol. italy

sake 125ml
482 kaori 14.5% vol. 8.5
sweet + rounded with a crisp aroma,
reminiscent of melon + banana

tea

778 fresh lemon
+ ginger 3

784 fresh mint 2.5

775 golden leaf
breakfast tea (v) 2.5
black tea or with whole milk

771 green tea free



778



744