



# Connected asset management

Take back control with an asset management solution that tracks and monitors your equipment and trailers around the clock.

**verizon**<sup>✓</sup>  
**connect**

# Versatile asset tracking solution

Our solution is optimized for use across a wide variety of industries with niche requirements. If your business needs to monitor or track an asset out in the field, we can help.

## Transportation and Distribution

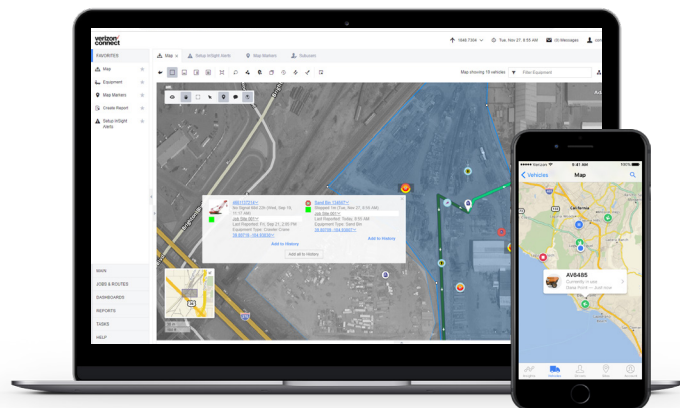
Monitor open doors and storage temperature of trailers to help ensure security and quality of goods.

## Construction

Keep track of equipment, optimize asset utilization and bill equipment usage accurately.

## Utilities and Oil, Gas, and Mining

Track where equipment is being used and make sure gear is where it should be – ready to be deployed.



With Verizon Connect Fleet, you can manage assets from a wide range of original equipment manufacturers (OEMs) in the same screen.



From large earthmoving equipment to portable tools, we have an asset tracking solution to suit your needs.

# Why use asset tracking?



## Improved security

Set up alerts when equipment is moved outside an area, tampered with or started. Speed up recovery with live location tracking that can be shared with the authorities.



## Protect your investment

Plan and track maintenance using accurate engine hours and diagnostic data, potentially extending machine life and reducing costly breakdowns.



## Accurate billing

Automated reports to show time on site and recorded engine hours for rented equipment or internal cost center accounting.



## Utilization

Understand how and where your assets are being used, identify available assets quickly, and right-size or redeploy your fleet to the job at hand.

# Smart sensors

## Environmental sensors to help protect your precious cargo

### Light (Lux)

Detect changes in ambient light (lux), which can be used to report on events, including opening of a container.

### Temperature

Trigger alerts for temperature changes or when limits are exceeded. Used to maintain cold chain integrity, keep FSMA-compliant and provide customers with peace of mind.

### Pressure (hPA)

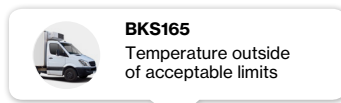
Use atmospheric pressure data to determine a tracked asset's elevation. Includes options to switch to flight mode at specific heights.

### Movement

Monitor shock (G-force), tilt and current angle of an asset with a built-in accelerometer. Allows you to report on a wide range of events, including handling of fragile goods or detecting usage or accidents.

### Humidity (%)

Report on water vapor in the air around a tracked asset, which can be used for determining if the area is dry or moisture levels are too high.



## Verizon Connect Fleet offers custom reporting.



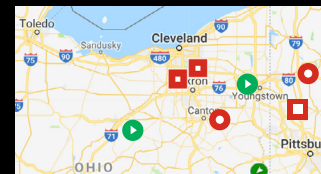
### Geofences

Define locations that will trigger an alert if the asset is moved into or out of the area. Carriers may use this to accurately measure detention time for containers or trailers at a yard.



### Flexible ping rates

Choose how often trackers report based on frequency (e.g. 5 minutes) or event (temperature threshold), or both.



### Simplified web dashboard

Manage thousands of moving assets with an online dashboard, live map and clustered asset reporting to group nearby equipment.



# Hardware that fits your business

A range of hardware options to suit different reporting needs, environments, vehicles and equipment – regardless of size.

**Flexible unit options and features let you focus on solving business needs instead of worrying about hardware compatibility.**

## Easy installation

No wiring required for these easy-to-install trackers. Small devices are available for applications with limited size, as well as long-lasting rechargeable batteries with low-power alerts.

## Assisted GPS

Get better coverage underground or inside buildings with A-GPS technology that uses the cellular network to improve location accuracy when GPS signals are not available.

## Weatherproof

Robust GPS tracking hardware that can withstand harsh environments of dust, sand and water (up to IP68 available).

## 24-hour monitoring

Our asset trackers are always on the job, connected to the nation's largest and most reliable 4G LTE network.

## Satellite

Satellite trackers available for managing assets that need to keep reporting outside the cellular network (dual-mode also available).

## Powered

Wired trackers with battery backup allow a device to connect directly to a power source, or choose a micro-USB rechargeable option.

**Ready to find out more?**

Request more information, pricing or an online demonstration with one of our sales consultants to explain how our asset tracking solution works.

**Visit [verizonconnect.com](http://verizonconnect.com) or call 866.844.2235**

**verizon**<sup>✓</sup>  
**connect**