

ebook

Improve Productivity with a Fleet Management Solution

verizon[✓]
connect





You have the best drivers and vehicles

Now how do you get best practices in place to ensure maximum efficiency, and thus maximum profitability?

According to a study by Aberdeen Group about the impact of technology on business, automated dispatching and improved routing provided by GPS fleet tracking can lead to a 23% increase in total jobs completed per day, as well as a 15%

reduction in average time per job and 10% decrease in overtime pay, significantly improving revenue through increased efficiency.

In addition, the gathering of previously inaccessible data, including driver behavior, speed

and idle time, not only promotes safer driving behaviors, but also can help reduce fuel consumption. Read on for details on four ways operations and fleet managers use fleet management solutions to help with productivity.¹



A fleet management solution can decrease:

- Average time per job
- Overtime pay
- Fuel consumption



A fleet management solution can increase:

- Jobs completed per day
- Safety
- Employee retention

1

Improve dispatching and routing

With a fleet management solution, dispatchers know the precise location of each vehicle in near-real time. This helps to improve efficiency in a number of ways and situations.

Benefits can include:

- Efficient routing of vehicles to the most appropriate job site
 - Certain solutions also feature the ability to automatically locate vehicles nearest to a given address, which can be especially helpful in an emergency situation
- Near real-time traffic reporting
 - To help provide the most direct route to any job site, as well as the ability to quickly re-route drivers, should they get lost
- Lower fuel consumption
- Reduced vehicle wear and tear



For maximum efficiency, be sure to scrutinize the mapping functions of any fleet management solution. Many have inaccurate or incomplete mapping. Powerful mapping functionality is of paramount importance.

2

Monitor inefficient employee practices

When drivers know their vehicles are being monitored, they tend to choose safer driving habits.

A fleet management solution gives fleet managers the ability to virtually ride along with their drivers, at any time to virtually any location.

Benefits can include:

- The ability to monitor vehicle idle times and engine status
- An alert function to quickly identify idle or inoperative vehicles, helping to address issues immediately and avoid unnecessary downtime
- Elimination of personal use of company vehicles, since drivers deviating from a direct route to a job site are immediately identified
- Increased productivity, thanks to operations and fleet managers receiving quantitative measurement of employee performance – this works especially well with fleet management solutions that provide in-depth historical reporting

Employee reward programs encourage productivity and boost employee morale.



3

Automated timesheets & payroll

Manual timesheets have always been problematic. They're not merely potentially imprecise or inaccurate, but can also be easily falsified.

Other benefits can include:

- Automated tracking and logging of vehicle time on the clock, from start-up to shut-down, providing a precise accounting of employee hours
- Shut-off and restart times during the day that can be used to record time spent for breaks and meals
- Extensive reporting functionality that automatically compiles all information in a user-friendly format that can be used as an electronic timesheet; integrating this information into back-office applications can further reduce business inefficiencies through reduced administrative costs

By using a fleet management solution, businesses pay for actual and measurable work done, which protects both employer and employee from overpaying or being underpaid.



4

Reduced unauthorized vehicle usage

Fleet management solutions can help ensure employees limit use of company-issued vehicles solely for authorized purposes, during authorized times.

Benefits can include:

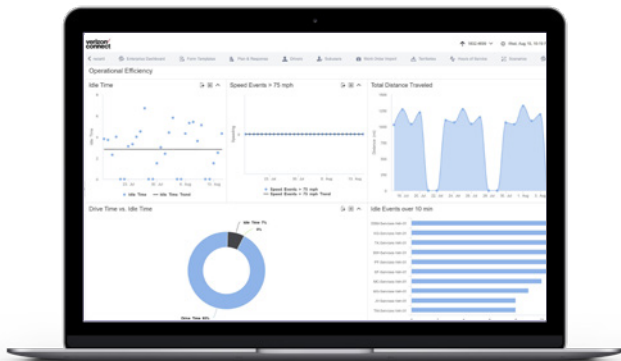
- Customized alerts report when vehicles enter restricted or dangerous locations
 - For example, anywhere known to be where drivers congregate, wasting valuable company time
- Advanced solutions notify operations and fleet managers when vehicles are utilized during unauthorized hours
 - This can be essential not just in detecting and preventing vehicle theft, but can also help with quick recovery of a stolen vehicle or equipment
- Reduction of moonlighting with company vehicles
 - Especially when a company vehicle is used for commuting home



A fleet management solution can detect visits to unauthorized locations. Alerts can be set up to notify fleet managers when vehicles leave authorized areas.

Find your solution today

Fleet management solutions have helped businesses around the world decrease payroll costs, improve productivity and increase their profit margins.



Learn more about fleet management solutions, visit us at verizonconnect.com or call 866.844.2235



Verizon Connect is guiding a connected world on the go by automating, optimizing and revolutionizing the way people, vehicles and things move through the world. Our full suite of industry-defining solutions and services put innovation, automation and connected data to work for customers and help them be safer, more efficient and more productive.

